

20-minute neighbourhoods could be trialled in Norfolk

24th January

PLANNING AND DEVELOPMENT



By Dan Grimmer

[dangrimmer24](#)

Specialist reporter (public affairs)



Comments




Attleborough - could new developments mooted there include 20-minute neighbourhoods? (Image: Mike Page)

Innovative neighbourhoods, where everyone living in them has access to most of their everyday needs within a 20-minute walk, could be trialled in Norfolk.

The county council has agreed to work with other authorities and transport bosses to explore the creation of such districts in urban and rural areas.

The idea of 20-minute neighbourhoods is that people can get to key services, such as healthcare, schools, parks and shops selling fresh food, with no need to get in a car.

Such neighbourhoods have gained popularity in the United States, Australia and Scandinavia, with the concept that people can walk to and back from services within 20 minutes - 10 minutes there and 10 minutes back.

Recommended by  Outbrain



Your Old PC Will Run Like New With This Simple Trick (Do It...

Security Savers Online | Sponsored



£129pp: 3 nights in Krakow w/flights

Travelzoo | Sponsored



In a 20-minute neighbourhood, key services such as shops are just a short walk away. (Image: Simon Finlay)

Rackheath area north east of Norwich.

Receive the top news, sport and things to do, sent to your inbox every lunchtime.

Email address

Sign up

[Our Privacy Policy](#)



Norfolk county councillor Lana Hemsall (*Image: Conservative Party*)

Lana Hemsall, Conservative county councillor for Acle, proposed a motion about the possible creation of the neighbourhoods at a recent county council meeting, which was supported by 48 councillors, with none voting against.

"A 20-minute neighbourhood is typically defined as a place where people can meet most of their everyday needs through a pleasant, fully accessible, 20-minute return journey undertaken without the use of a car," she said.

"Typically, a 20-minute neighbourhood approach should help to disperse investment, jobs and services more widely across a town or city rather than just focusing on the centre.

"Making sure that neighbourhoods are compact and fully accessible, as well as containing a mix of different shops, services and amenities will make it easier for more people to move around on foot, by wheelchair, by bike, by bus or other non-car means.

"Research shows that people are generally happy to travel for 20 minutes to get to and from the places they need to go."

While cars would not be banned, the neighbourhoods would be designed

County Hall officers will also work with district councils and other organisations to review the evidence and benefits of trialling a number of 20-minute neighbourhoods in rural and urban areas.



Norfolk Green county councillor Jamie Osborn (Image: Jamie Osborn)

Green county councillor Jamie Osborn said the council should halt work on the controversial Norwich Western Link road and **divert officers to exploring the 20-minute neighbourhood concept instead.**

PLANNING AND DEVELOPMENT



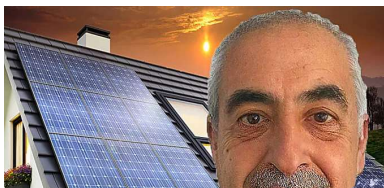
Comments

More Stories

An advertisement featuring a background of the Union Jack flag. A white rounded rectangle in the center contains the text: "MARRIED BETWEEN 1960 - 2022?", "HMRC May Owe You £1,242 In A Tax Refund", and "ONLINE FREE CHECK".

Married? Lookup Your Name To See If Your Due A Tax Refund

Marriage Tax Helpdesk | Sponsored





Over 50s Rushing To Get Direct Pre-Paid Cremations

goldenleaves.com | Sponsored



Read This Before You Get Solar Panels

Eco Quote Today | Sponsored

Your 2023 Finances: Could paying off your mortgage give you a better retirement?



Witness comes forward in Nicola Bulley case as police...

edp24.co.uk



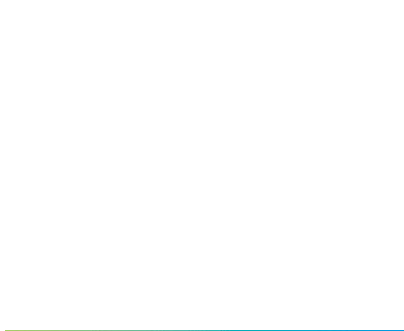
Details revealed of damage caused by bomb

edp24.co.uk



New Senior Living Residences Nearby (Take a Look at the Prices)

Senior Living | Search Ads | Sponsored



WATCH: The moment the bomb explodes in Great Yarmouth

edp24.co.uk



Our reviewer says this Norfolk pub 'has it all'

edp24.co.uk

MOST READ

- 1** Tension between landowner and villagers over plans for meadow
- 2** Armed police raid derelict pub in Norfolk village
- 3** Earthquake reported off the Norfolk coast
- 4** Parish council meeting ends in disarray as members walk out
- 5** Man charged with murder following Yarmouth stabbing
- 6** 'Hidden gem' restaurant "thrilled" as new menu becomes a hit with customers
- 7** A47 reopens after crash between van and car
- 8** Air ambulance called to city centre incident
- 9** More than 110,000 in Norfolk and Waveney to get £301 cost of living payment
- 10** Norwich's multi-million-pound new riverside project put on hold

[Show more articles](#)

[Contact us](#)

[Announcements](#)

[Terms & Conditions](#)

[Newsquest printing](#)

[Newsletters](#)

[Exchange and Mart](#)

[Privacy Policy](#)

[Photo Sales](#)

[Archive](#)

[Manage Consent](#)

[Cookie Policy](#)

[Contributor Terms](#)

[Advertise](#)

[Site Map](#)

[Terms of Advertising](#)

[Diversity Statement](#)

[Our Publications](#)

[Add Your Event For Free](#)

FOLLOW US

[Eastern Daily Press](#)

[Eastern Daily Press](#)

[Eastern Daily Press](#)