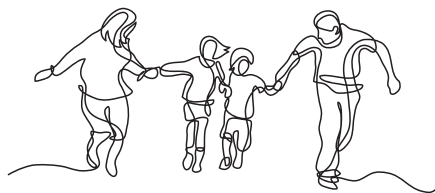


- **Convenience:** seamless switches between public transport, shared mobility and active travel. In Austin, Texas where mobility hubs were introduced, walking increased by 25%.
- **Plugging the gaps:** 24hr availability, accessible, sustainable and cost-effective services between rail and bus can lead to significantly less reliance on car travel. In Bremen interconnected mobility hubs led to 6,000 less vehicles on the road.

(Source for all 3: COMO UK Overview, Benefits and Evidence Base)



Beryl Bikes (e-bike hire), Falmouth



Example scheme proposals

Below are scheme proposals that we could progress subject to funding and engagement. This isn't a list of all our scheme proposals – we want to hear what you think about the proposals listed below and any that you want for your area. We'll collect all scheme

requests and use our new scoring and prioritisation process to help us prioritise the most needed and best value for money schemes across the district. This will inform our network planning for when funding becomes available.

Location	Brief issue/improvement concept	Status
Weston Central ('destination' hub)	Interlinking the bus interchange and Weston railway station with active and sustainable modes	Concept only at present
Worle Work Package ('destination' hub)	Linking Worle Terminus and High St	Concept only at present
Clevedon ('destination' hub)	Linking Clevedon Triangle, Old St, Hill Road	Concept only at present
Portishead ('destination' hub)	Linking High St, Harbour Rd, The Marina, proposed Portishead Railway Station	Concept only at present
Satellite Villages Work Packages (1 and 2)	Linking outer villages: Cleeve, Congresbury, Wrington, Yatton, Long Ashton, Banwell, Sandford, Churchill,	Concept only at present
New scheme proposals from communities and stakeholders	To be added following consultation – all proposals will be subject to review, scoring, prioritisation and funding being available	Awaiting issues/requests from our communities and stakeholders

Useful current examples

1. **Bristol e-scooter trial with Voi**
(most successful in UK).
2. **OV Fiets**
(National bike hire rental scheme in Netherlands, linking in with the rail and bus network).

Challenges to delivery

- Securing sufficient funding to develop and deliver our initiatives and scheme proposals with our communities (use of a number of sources of funding mitigates this challenge).
- Ensuring correct level of resource, early engagement with procurement, and ongoing effective work with private sector – to deliver our First and Last Mile programme.

We want to hear from you!

We want your ideas about active travel interventions you want in your area.

Residents, businesses, visitors and other stakeholders – we encourage you to discuss issues local to you with your Town or Parish Council and your Elected North Somerset Councillor for your ward area.

You can also add your requests at [Widen My Path](#).

Town and Parish Councils and North Somerset Council Elected Members – please use the **Highway Improvement Request Form** to submit your transport network improvement requests.



This publication is available in large print, Braille or audio formats on request.

Help is also available for people who require council information in languages other than English.

For all enquiries please contact the Transport Team
transport.policy@n-somerset.gov.uk