



Newsagents reveal what happens when someone wins a National Lottery jackpot in their shop

(<https://www.express.co.uk/sponsoredfeatures/news/uk/1373031/National-Lottery-winners-newsagents-jackpots-million-pound-prizes?obOrigUrl=true>)



Oxford coronavirus vaccine breakthrough in 'adults over 60' – strong immune response

(https://www.express.co.uk/news/uk/1361907/Oxford-coronavirus-vaccine-UK-latest-results-Lancet-report-tri-utm_source=traffic.outbrain&utm_medium=traffic.outbrain&utm_term=traffic.outbrain&utm_content=traffic.ou)

Tier 3 MAPPED: Matt Hancock adds London to highest tier - but is YOUR area now tier 3?

TIERS across the UK have now been reviewed with millions more moving into the highest tiers and therefore facing the toughest restrictions - but where in the UK will be in Tier 3 from Wednesday?

Matt Hancock urges Christmas shoppers to avoid Tier 3 areas

Enter your email address here

SUBSCRIBE

We will use your email address only for sending you newsletters. Please see our Privacy Notice



Tier 3 map: London, parts of Essex and Hertfordshire will move into tier 3 on December 16 (Image: PA)

Which areas will move into Tier 3 from Wednesday, December 16?

The Health Secretary confirmed London, parts of Essex and Hertfordshire will move into Tier 3 this week given the sharp increase in rates of Covid-19 recently.

The areas which will be Tier 3 from 12.01am on Wednesday will include:

- **Greater London.**
- **Essex: Basildon, Brentwood, Harlow Epping Forest, Castle Point, Rochford, Malden, Braintree and Chelmsford, Thurrock and Southend on Sea.**
- **South Hertfordshire: Broxbourne, Hertsmere, Watford and the Three Rivers local authority area.**

READ MORE



[Boris Johnson speech: How to watch press conference today LIVE](#)

[\(/news/uk/1373269/boris-johnson-speech-today-watch-live-press-conference-christmas-rules-tiers-change-evg\)](#)



Tier 3 map: Mr Hancock said a new variant may be fuelling the rising infection rate (Image: PA)

Mr Hancock said a new variant may be responsible for the rapid spread of coronavirus across southern regions.

He said: "We have identified a new variant of coronavirus, which may be associated with the fastest spread in the south-east of England.

"Initial analysis suggests that this variant is growing faster than the existing variants.

"We've currently identified over 1,000 cases with this variant, predominantly in the south of England, although cases have been identified in nearly 60 different local authority areas, and numbers are increasing rapidly."

He added the World Health Organization has been notified of the virus and said it was unlikely the variant will be immune to the vaccine.

Mr Hancock said: "must stress at this point that there is currently nothing to suggest that this variant is more likely to cause serious disease and the latest clinical advice is that it's highly unlikely that this mutation would fail to respond to a vaccine, but it shows we've got to be vigilant and follow the rules and everyone needs to take personal responsibility not to spread this virus."

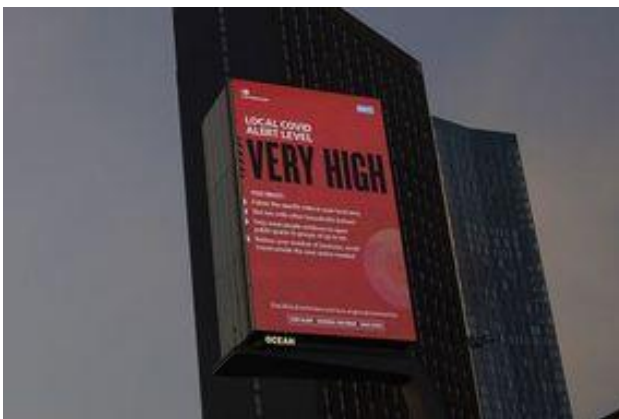
DON'T MISS

[Tier 3 lockdown: Towns in London, Essex and Hertfordshire in tier 3](#) ([/news/uk/1372425/tier-3-lockdown-towns-london-essex-hertfordshire-new-restrictions-evg](#)) [INSIGHT]

[Tier 3 rules: How does it differ from Tier 2?](#) ([/news/uk/1372402/Tier-3-rules-how-tier-3-different-from-Tier-2-evg](#)) [EXPLAINER]

[Tier 3 rules: What does Tier 3 mean for London?](#) ([/news/uk/1372401/Tier-3-rules-what-does-Tier-3-mean-for-London-evg](#)) [ANALYSIS]

RELATED ARTICLES

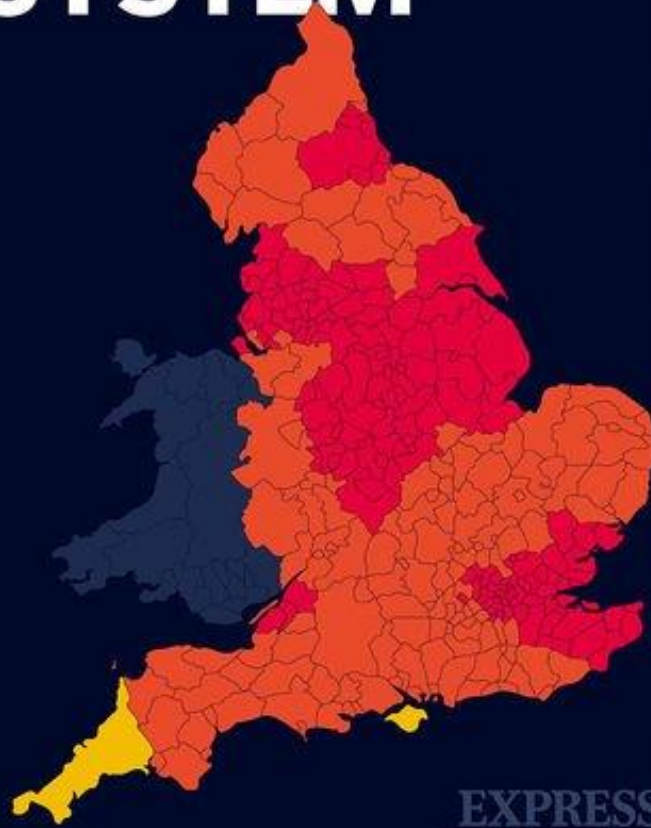


[What time will the new tiers be announced?](#)
([/news/uk/1373144/What-time-new-tiers-announced-evg](#))



[Christmas SAVED: Rules will NOT be changed as Boris gets deal](#)
([/news/politics/1373214/Boris-Johnson-news-today-PMQs-Christmas-holiday-coronavirus-tier-system-relaxed-latest-vn](#))

ENGLAND'S THREE TIER SYSTEM



TIER 1: MEDIUM ALERT

South East
Isle of Wight

South West
Cornwall
Isles of Scilly

TIER 2: HIGH ALERT

North West
Cumbria
Liverpool City Region
Warrington and
Cheshire

South East
East Sussex
West Sussex
Brighton and Hove
Surrey
Reading
Wokingham
Bracknell Forest
Windsor and
Maidenhead
West Berkshire
Hampshire (except
the Isle of Wight),
Portsmouth and
Southampton
Buckinghamshire
Oxfordshire

Yorkshire
York
North Yorkshire

West Midlands
Worcestershire
Herefordshire
Shropshire and
Telford & Wrekin

East Midlands
Rutland
Northamptonshire

East of England
Suffolk
Hertfordshire
(Dacorum, East Herts,
North Hertfordshire,
St Albans, Stevenage,
Welwyn Hatfield)
Cambridgeshire,
including
Peterborough
Norfolk
Essex (Colchester,
Tendring, Uttlesford)
Bedfordshire and
Milton Keynes

South West
South Somerset,
Somerset West and
Taunton, Mendip and
Sedgemoor
Bath and North East
Somerset
Dorset
Bournemouth
Christchurch
Poole
Gloucestershire
Wiltshire and Swindon
Devon

TIER 3: VERY HIGH ALERT

North East
Tees Valley Combined
Authority:
Hartlepool
Middlesbrough
Stockton-on-Tees
Redcar and Cleveland
Darlington
North East Combined
Authority:
Sunderland
South Tyneside
Gateshead
Newcastle upon Tyne
North Tyneside
County Durham
Northumberland

North West
Greater Manchester
Lancashire
Blackpool
Blackburn with Darwen

Yorkshire and The Humber
The Humber
West Yorkshire
South Yorkshire

West Midlands
Birmingham and Black
Country
Staffordshire
and Stoke-on-Trent

Warwickshire,
Coventry and Solihull
East Midlands
Derby and Derbyshire
Nottingham and
Nottinghamshire
Leicester & Leicestershire
Lincolnshire

Greater London

South East
Slough (remainder of
Berkshire is tier 2:
High alert)
Kent and Medway
*Essex local authorities:

Basildon, Brentwood,
Harlow, Epping Forest,
Castle Point, Rochford,
Maldon, Braintree,
Chelmsford, Thurrock,
Southend-on-Sea
*Hertfordshire local
authorities
Broxbourne, Hertsmere,
Watford, Three Rivers

South West
Bristol
South Gloucestershire
North Somerset

Tier 3 map: England's three-tier map showing the new tier 3 areas (Image: EXPRESS.CO.UK)

READ MORE



COVID-19 Tier 3: Children will pay heavy price if schools close early.

[/news/uk/1373106/schools-close-early-is-coronavirus-tier-3-lockdown](https://www.express.co.uk/news/uk/1373106/schools-close-early-is-coronavirus-tier-3-lockdown)
Privacy

What are the rules in Tier 3 areas?

Tier 3 areas are those which are on the very high alert level meaning they have the most concerning rates of Covid-19.

In Tier 3 areas the following rules are in place:

No household mixing is permitted indoors or outdoors in hospitality venues or private gardens.

The rule of six applies in outdoor public spaces like parks.

Pubs or restaurants closed except for delivery and takeaway.

Indoor entertainment venues will be closed.

Guidance against travelling in and out of the area.

Personal care including hairdressing is permitted

Weddings and funerals can proceed with just 15 and 30 guests respectively, wedding receptions are not permitted.

- Non-essential shops can remain open.
- Leisure and sports facilities, such as gyms, can stay open, but group exercise classes (including fitness and dance) should not go ahead indoors
- Organised outdoor sport, physical activity and exercise classes can continue, however, higher-risk contact activity should not take place
- People should avoid staying overnight in another part of the UK if they are resident in a 'very high' area.
- Hotels, B&Bs, campsites and guest houses have to shut



Tier 3 map: More than 60 percent of England will be in tier 3 from Wednesday (Image: PA)

The Health Secretary said the Government's mass testing will continue to be expanded in a bid to drive down the rate of coronavirus cases.

He said another 67 local authorities will receive community testing this week.

Mr Hancock said this would assist areas to "move down tiers" and return living closer to normal.

He finished his statement by saying that people must not waver "as we enter the final stretch".

READ MORE: [London to be plunged into Tier 3 on Wednesday announces Matt Hancock](#) (/news/politics/1372390/London-Tier-3-Wednesday-coronavirus-restrictions-capital-latest)

RELATED ARTICLES



[Boris Johnson under 'extreme pressure' not to Cromwell Christmas](#)

(/news/uk/1373061/boris-johnson-oliver-cromwell-coronavirus-christmas-cancelled-tier-3-newsnight-lockdown-on)



[London lockdown frenzy: Thousands of revellers flock to pubs](#)

(/news/uk/1373078/london-lockdown-news-tier-3-restrictions-uk-hospitality-pubs-open-ont)

From 12.01am on Wednesday, December 16, the following areas are now in Tier 3:

East Midlands

- Derby and Derbyshire

[Privacy](#) cester and Leicestershire

- **Lincolnshire**
- **Nottingham and Nottinghamshire**

North East

- **North East Combined Authority: County Durham, Gateshead, South Tyneside, Sunderland**
- **North of Tyne Combined Authority: Newcastle upon Tyne, North Tyneside, Northumberland**
- **Tees Valley Combined Authority: Darlington, Hartlepool, Middlesbrough, Redcar and Cleveland, Stockton-on-Tees**

North West

- **Blackburn with Darwen**
- **Blackpool**
- **Greater Manchester**
- **Lancashire**

South East

- **Kent and Medway**
- **Slough (remainder of Berkshire is tier 2: High alert)**

South West

- **Bristol**
- **North Somerset**
- **South Gloucestershire**

West Midlands

- **Birmingham, Dudley, Sandwell, Walsall and Wolverhampton**
- **Staffordshire and Stoke-on-Trent**
- **Warwickshire, Coventry and Solihull**

Yorkshire and The Humber

- **East Riding of Yorkshire**
- **Kingston upon Hull/Hull**
- **North East Lincolnshire**
- **North Lincolnshire**
- **South Yorkshire**
- **West Yorkshire.**

London

- **All 32 boroughs plus the City of London**

East of England

- **Basildon**
- **Braintree**
- **Brentwood**
- **Castle Point**
- **Chelmsford**
- **Epping Forest**
- **Harlow**
- **Maldon**
- **Rochford**
- **Southend-on-Sea**
- **Thurrock.**
- **Broxbourne**
- **Hertsmere**
- **Three Rivers**
- **Watford.**

[Coronavirus \(/latest/coronavirus\)](#) [Matt Hancock \(/latest/matt-hancock\)](#)