

Bleadon Parish News



Winter 2025 Issue 135

Ways to Contact Bleadon Parish Council (BPC)

Personally Contact Councillors	
Cllr Andy Scarisbrick (Chairman)	andyscarisbrick@bleadonparishcouncil.co.uk
Cllr Mary Sheppard (Vice-chairman)	marysheppard@bleadonparishcouncil.co.uk
Cllr ID Clarke	idclarke@bleadonparishcouncil.co.uk
Cllr Ann Davies	anndavies@bleadonparishcouncil.co.uk
Cllr Jo Gower-Crane	jogc@bleadonparishcouncil.co.uk
Cllr Lorraine Stanley	lorrainestanley@bleadonparishcouncil.co.uk
Cllr Steve Sugg	stevesugg@bleadonparishcouncil.co.uk
Cllr Becci Wild	becciwild@bleadonparishcouncil.co.uk
Co-option Vacancy	
Contact the Clerk	
Craig Bolt	parishclerk@bleadonparishcouncil.co.uk Tel: 07453 358 318 (Tues, Wed & Thurs am) C/O Coronation Halls, Bleadon. BS24 0PG
Weekly Opportunities to Visit the Clerk	
Bleadon Café every Tuesday, 9am-12pm	
Monthly Opportunities to Raise Questions and Listen to Discussions	
Full council meetings <u>every second Monday</u> of the month at the Coronation Hall at 7pm. Residents have 3 minutes each to speak with the council.	
Extra-ordinary Meetings – ad hoc dependent on issues raised	
Can be called by residents opr BPC. <u>Dates</u> will be displayed in advance on noticeboards and BPC website	
Residents Annual Parish Meeting 2026 (APM)	
27th April 2026, 7:00pm at Coronation Hall - A meeting held for residents to openly discuss any parish issues and concerns, likes and dislikes. (This is NOT a council meeting) Key issues raised can be fed into the council's AMPC in May.	
Bleadon Parish Council's Annual Meeting 2026 (AMPC)	
May 2026, 7pm Similar format to the monthly meetings.	

Parish Council Chairman's Address



Dear Parishioners,

I'm writing this in early November when we've had an unseasonably warm October and first week of November. The weather seems to be turning and although, to me, Christmas seems a long way away it will soon be upon us.

I attended the Remembrance service at our Parish church last Sunday where I laid a wreath on behalf of the Parish Council alongside representatives of other village organisations. It is important that we remember the sacrifices made by members of our parish in the two wars.

Inside this edition of the news you will find some information on two projects we are progressing with; the refurbishment of the public toilets and the new equipment planned for the play area and Pea Green. We are hoping these will happen early next year.

There are also some details regarding current public consultations. Whilst these may not seem particularly interesting it is your chance to have your say and put your views forward. I encourage you to do so.

The last edition of Bleadon Parish news gave details of the Weston Shuttle bus service (which runs Monday and Wednesday) as a trial till March 2026. It's a cash only service for those that have to pay but so far it's had little use. If we don't use it we will lose it.

This edition also has information about a number of activities going on in the parish over festive period. I hope you will find something of interest, I will certainly be going to the Christmas Market.

I wish you a very Merry Christmas and a Happy New Year.

Cllr Scarisbrick (Chairman)

Bleadon Halls ([Charity No. 1042602](#))

Both halls are keeping busy with regular bookings and other celebrations thanks to our efficient Booking Officer. Christmas will soon be upon us and the Committee are getting ready.

Decorations will be up in both halls on 29th November, ready for the Christmas Market on 6th December, and other festive celebrations. It's all hands on deck on this day at 10 am. If you can help just turn up to join the Deck the Halls team! The usual Christmas Raffle will take place at the Christmas Market on the 6th, if you could donate a prize we would be very grateful. All monies from the raffle go towards the upkeep of our lovely halls. Prizes to Committee Members or Tel: 07980 357032.

Our Hall Committee do a grand job looking after your village halls. They meet once a month on the 3rd Thursday at 7.30pm for an hour or so. If you feel you could give a little time to help; new faces and fresh ideas are always welcome. Please contact a Committee Member (or myself on the above number) for more information.

On behalf of the Hall Committee I would like to wish you a very Happy Christmas and a Prosperous New Year!

Betty Paterson (Chair)

Merry Christmas and a Happy New Year!

Thank you for your all support this year, especially to all the Parish News distributors who kindly offer their valuable free time to deliver these editions to you. **Cllr Jo Gower-Crane** (Editor)



Deadline for mid March 2026 to end of June 2026 edition is **15 Feb 26.**

Please contact: jogc@bleadonparishcouncil.co.uk

Views published are those of the contributor or editor and may not be those of the Parish Council.

This newsletter can be found in colour with links, on the BPC website at www.bleadonparishcouncil.co.uk/news-and-events/newsletters, with editions from Issue 1 onwards on Bleadon BOB at www.bleadon.org.uk/villagenews



Christmas Fayre @
Bleadon Farm Shop!



Sat 29th November
2pm-6pm



- ❖ *Mince pies & mulled wine*
- ❖ *Craft stalls and gifts*
- ❖ *Children's craft activity & letters to Santa*
- ❖ *Christmas Elf*
- ❖ *Meat orders at the butchery*
- ❖ *Discounted wine orders for Christmas*
- ❖ *Santa Paws dress-up-your-dog competition!*



- ❖ *Carol singing 4pm*
- ❖ *Win that special hamper...raffle prizes drawn at 5.30pm!*



#Christmas begins @ Bleadon Farm Shop!#

Youth Club

(Charity No. 304492)

Bleadon is blessed to still have a youth club at a time when a dwindling number of towns and even fewer village communities have somewhere safe for youngsters to socialise.

Our aim is to help our young people develop into caring, useful members of the community whilst having fun doing it. We've been doing that here in Bleadon for nearly 60 years now.



It may be a bit dull on the outside but inside it's bright, colourful and welcoming. For over ten years the Thursday evening youth club sessions have been run by the YMCA on behalf of the Trustees and the Management Committee that oversee the day-to-day running of the building and the youth club charity.

With Zoe and her team of YMCA youth workers providing professional leadership the young people of Bleadon and our wider community are assured of a safe and stimulating place to meet, learn and play each week.

A misconception amongst a few people in our community is that Bleadon Youth Club does not serve youngsters from Bleadon. This is not the case. The club has always had substantial local support and still today over half our young members live in Bleadon Parish.

Changing times. We are looking for new fundraising opportunities, if you have any suggestions please contact Keith Pyke at keith.pyke@btopenworld.com



To register your youngster's interest in joining Bleadon Youth Club scan the QR code which links to the YMCA website. Youngsters must be at least 10 years old and parental consent is required. Weekly subscriptions of £2 apply.

Or pop along on a Thursday evening 7-9pm for a chat and a look.

Light up a Life



Remember a loved one this Christmas
by making a dedication as part of
Weston Hospicecare's Light Up A Life

Mon 1 Dec, 3.30pm & 7pm

St Paul's Church
Weston-super-Mare

Wed 3 Dec, 7pm

Methodist Church
Burnham-on-Sea

Mon 8 Dec, 7pm

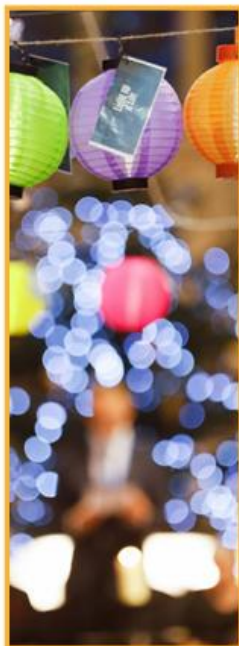
St Andrew's Church
Congresbury

Wed 10 Dec, 7pm

St Mary's Church
Clevedon

Wed 17 Dec, 6pm

Sovereign Centre
Weston-super-Mare



To find out more visit www.westonhospicecare.org.uk

Bleadon Farm Shop

As I write, the shop is looking suitably Autumnal with Halloween decorations, pumpkins, Autumn coloured flower bunches, baking goods ready for Christmas cakes and Christmas goodies beginning to appear!



Our Christmas Fayre is on 29th November from 2pm-6pm and we hope you'll be able to drop in. Do get a raffle ticket to win one of our Festive Hampers. Any profits from these sales go towards sponsoring food parcels for families in the village and environs in need of a little extra Christmas cheer. There will be mulled wine, mince pies, the Christmas Elf (looking suspiciously like Peter!), a Santa Paws dress up your dog competition, carol singing and lots of festive goodies to buy. Keith will be ready to take your Christmas meat orders. If you are interested in having a craft stall at the Fayre, please contact Paula on 019434 815584.

Coming soon, a new feature: Rotisserie whole cooked chickens, deliciously flavoured and ready cooked for collection between 4pm and 5.30pm. Perfect for those wintery evenings and Sunday lunches.



We will be serving festive boards from 1st-19th Dec (weekdays only) with delicious cheeses, meats, warm pig-in -blankets, mince pie (or cake of choice) glass of Bucks Fizz and coffee/tea. @ £19.50 pp it's a bargain! Perfect for a festive meet up with a friend, work colleagues or just to treat yourself!

We are hosting an increasing number of private functions including birthday celebrations, baby showers and wakes. We also prepare take away buffet platters. If you would like to book a bespoke event, do get in touch on 01934 815584. You can also pre order gift hampers or celebration cakes to take away.

Hope to see you soon and thank you for your continued support. Don't forget, due to popular demand we are open half an hour longer until 5.30pm, so we'd really appreciate your support!

Charlotte & Alistair House

Queens Arms Panto

Queens Arms Panto 2025 Jack & The Giant Stalk



Panto 2025!

Starts at 6.30'ISH

Sunday 21st December

Allotments Upgrade?

One of the statutory duties of the Parish Council is to provide allotments and the Council provided site is to the North of Purn Way. For those of you who may not be familiar with the site, it is extremely well used and although plots do occasionally become available, we are currently operating a waiting list.

Looking ahead, we know that the population of Bleadon is growing and the age profile is getting older. We are limited as to what we can reasonably provide in terms of allotments, but we think that there are some things we may be able to do to ensure that the allotments can still be used as we all get older. We also know that one of the main reasons for tenants giving up their plots is because they feel that they can no longer manage the plot either because of its size or accessibility. As a consequence, the Council has taken the decision not to re-let two plots, with a view to exploring whether these can be reconfigured to make them more relevant to current/future needs.

To kick start this process, the Council has notionally earmarked £3,500 to be used as ‘matched funding’ as part of bids to grant aid/external funding bodies, with a view to undertaking the following possible improvements:

- Sub-division to create more manageable size plots
- Installing large, raised planting areas at ‘waist’ height
- Providing stable pathways into and around the plots
- Providing a communal shed/tool store for the plot tenants e.g. if an existing plot is divided into 3 ‘mini plots’, there would be a shared facility for the 3 tenants
- Providing pressurised water to the shared plot

These are just our first thoughts and we would love to hear from you if you have any suggestions or – if it is something you are particularly passionate about – to work with us to develop funding submissions, as we know we won’t be able to achieve all of the above aspects without some additional funding. It doesn’t matter whether your interest is altruistic or because you might want to be a tenant of one of the potential plots – all views are welcome.

Craig Bolt – Parish Clerk & RFO

Bleadon Village Market

I have been running Bleadon Village Market as Market Organiser since 2002, together with the help of a team of hardworking volunteers. It has been great fun and has gone from strength to strength, becoming an integral part of village life, supporting local small businesses, and raising funds to support our village halls. However, the time has now come for me to retire and hand over to new people to keep the market going.



I gave notice a year ago that my last market would be 6th December this year (DON'T MISS IT!). Now, a great team of people have stepped forward to take on my job as Market Organisers. Some will be working behind the scenes and some you will meet at the market. I am sure they will do a great job and that you will support them as they take the Market forward. I wish them all the best and am so happy that Bleadon Village Market will continue.

Best wishes to all who give their support. I will see you at the Market!

Jo Jones

The Bleadon Belles & The WI Choir

Christmas is coming and the Belles have a busy time ahead. Along with visiting local nursing homes to bring some Christmas cheer, we will be singing at **The Wintergardens Christmas Eve on Tuesday 23rd December, 3-6pm.** The Belles will be singing from 4.45. Entry will be £2.17 (£8.13 to see Father Christmas!). The choir is also taking part in the **WI Carol Service on Friday 5th December from 6pm** in Bleadon Church. All welcome!

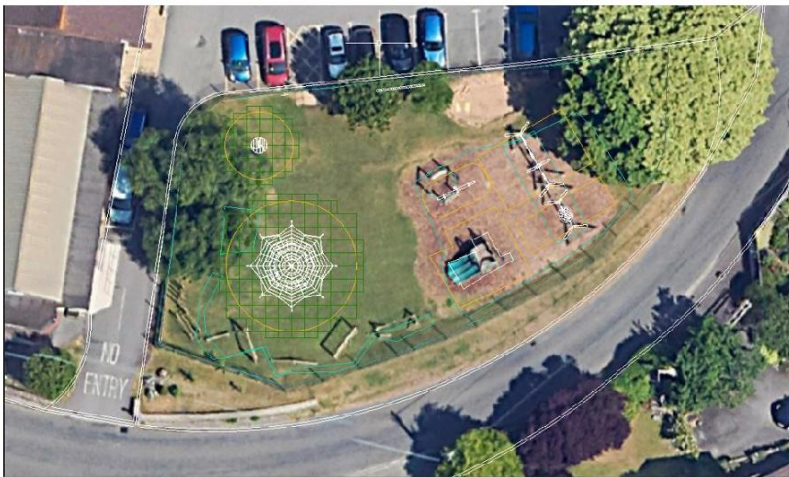
You are invited to the **CHRISTMAS SINGALONG, 3-5pm on Sunday 14th December** in the Coronation Hall, which is raising funds for the Somewhere to Go charity this year. The charity provides day and night services 365 days a year, helping rough sleepers and disadvantaged vulnerable adults in and around Weston-super-Mare.

As well as being able to join in with Christmas Carols, there will be festive refreshments and a Christmas Raffle (bring plenty of cash!) all for just £5. Tickets will be available from the Post Office and will sell out quickly.

Play Area Improvements

As previously mentioned, we are still waiting for the necessary legal agreements to be concluded before placing a contract for works. However, we have been working with Caloo to finalise proposals.

The scheme we are looking to put in place will involve some more pieces of equipment than originally envisaged, so we wanted to share our latest thinking and provide you with some indicative layout plans and pictures of the play equipment to be installed. We mentioned before that we were keen to introduce a more challenging climbing structure whilst retaining some of the open space and we think we've been able to come up with a solution which will work. It's also worth remembering that – in providing equipment at the existing play area site – it will leave a new area of Public Open Space (approximately twice the size of the village centre play area) at the former quarry site which will be unencumbered by any structures and much better suited to running around, kicking a football about etc.



The other changes include a new swing configuration. We were keen to introduce a new inclusive basket swing but it seemed that the only way to do this would be to lose two of the existing swings. However, by



Merry Christmas from Bleadon. Saint Peter and Saint Paul

*May the joy of the angels, the eagerness of the shepherds,
the perseverance of the wise men, the obedience of Joseph and Mary, and
the peace of the Christ-child be yours this Christmas.*

Photo: detail of Warren Storey's painting Madonna and Child, 1997



***Wishing you a very happy
Christmas and New Year***

From Bleadon Parish Council

Bleadon Church 2025

We invite you to our Special Christmas Services



Our Crib Service at 4:30pm on Christmas Eve:

A special yet informal service for young and old alike. We sing carols and build our Crib together.

Our Christmas Eve Communion at 8:00pm

A unique moment of celebration in any year. All who seek to respond in love to the love of Jesus, "God with us", are welcome to receive the bread and wine of Communion.

Our Christmas Day Informal Worship at 10:15am

A simple space to sing carols and reflect together on the wonder of Christmas,

All these services will take place in the church.

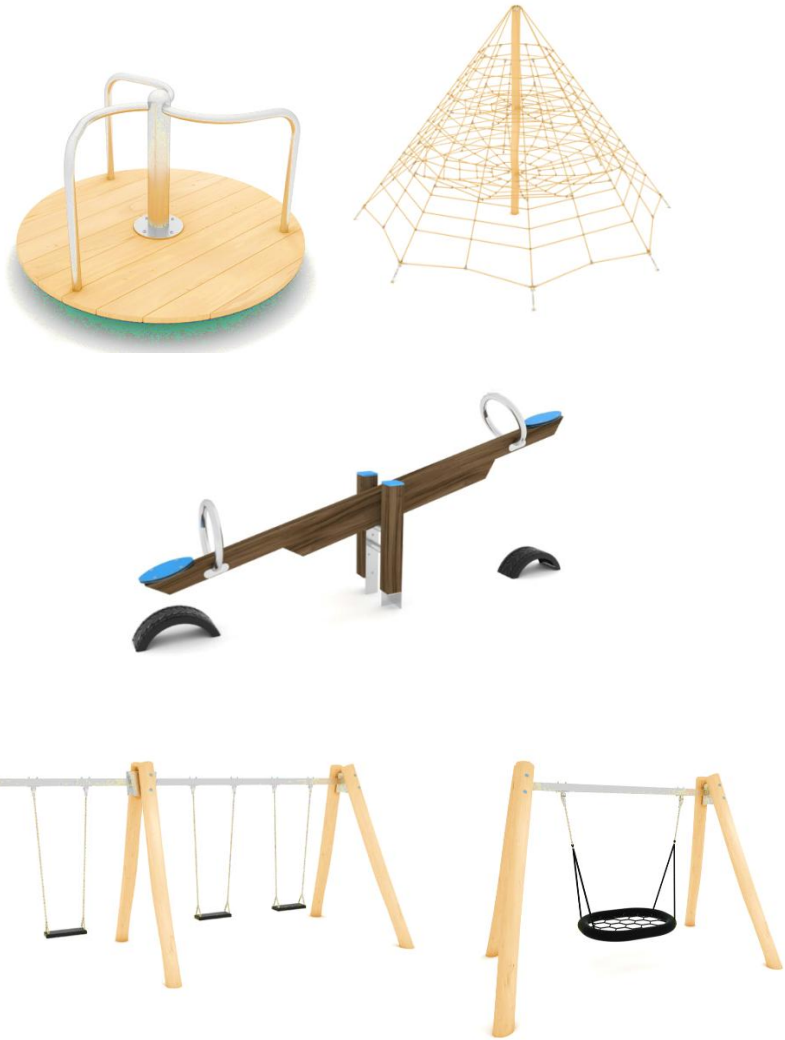
Find us at BS24 0PG)

For more info contact the Churchwardens:

Sara: sara.hughes6@btinternet.com / 01934 811 008

Sue: suedav@btinternet.com / 07712 452 845

The new frame for the swings, the necessary ground works and the additional item of outdoor exercise equipment will increase costs. As a consequence, we will be looking at alternative/external funding opportunities to close some of this gap. However, we're confident that – provided the funding from the former quarry development is forthcoming – we will be able to deliver the scheme without any negative impact upon any of our other proposals.



Bleadon Players present by arrangement with Stage Right Creative

Beauty & the **BEAST**

DIRECTED BY
TIM CLARKE

WRITTEN BY
ALAN P FRAYN

"A TALE AS OLD,
AS TIME"

22nd - 24th
JANUARY 2026

CORONATION HALL, BLEADON

**THE
BLEADON
PLAYERS**
DRAMA COMEDY THEATRE PRODUCTIONS

www.bleadon-players.co.uk

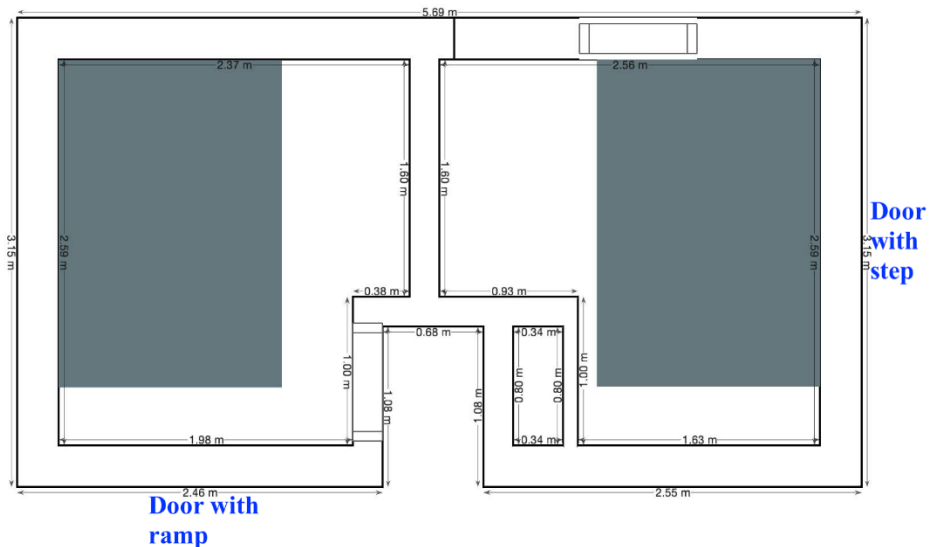


**Stage Right
CREATIVE**

Refurbishment of the Toilets

We are currently working with Jones Building Group to finalise proposals for the refurbishment of the toilet block and agree start and completion dates. However, there are a number of things which we can confirm.

- There will be two toilet cubicles which will be fully refurbished and fitted with accessible sanitary ware. This will include items such as grab rails to help those with mobility problems and the use of contrasting block colours to help those with visual impairments.
- Both cubicles will be unisex and both cubicles will have a urinal, so as to avoid the scenario of the toilet seat being left up! However, it's important to note that each cubicle will be able to be accessed independently and will be able to be locked from the inside; there is no form of 'shared' space between sexes.
- One of the cubicles will have a ramped access to enable it to be accessed by those in wheelchairs/mobility scooters. This will be by way of a door facing out onto Pea Green. The door to access the second cubicle will face out onto Coronation Road and this will have a stepped access. Existing entrance ways will be blocked up/off. We've thought long and hard about the merits of installing a ramp to the second cubicle but have come to the conclusion that a ramp would impede the flow of those passing by the toilets and potentially create – rather than solve – problems.
- The walls will be panelled with white wall panels to make the most of the limited natural light.
- In keeping with the block colour scheme approach, the floor will be grey and will be sealed vinyl.
- Within each cubicle, there won't be any internal subdivisions – although we will still be keeping the small storage cupboard which is currently located in the Gent's toilet. This will mean that each cubicle will have a much bigger feel and there will be plenty of space for parents/carers to accompany those who might need some assistance. By way of an example, the diagram below shows the footprint of the current toilet block (which we aren't planning to change). The grey section is the amount of space current design guidance suggests is required to meet disabled access requirements. So, you can see that each of the two cubicles more than meet the requirements.



- Baby changing facilities will be installed and we will also be looking to install lower-level surfaces and mirrors to assist those who might have stoma bags.

There are also some things we won't be doing but we want to reassure you that they are things we have looked into in some detail.

- We won't be installing solar panels as part of the refurbishment. The annual energy costs for the toilets are about £250 per year and we don't expect this to change significantly as part of the planned works. The (quoted) cost of installing a panel and battery system would be in the region of £7,000. There aren't currently any grants or additional funding the Council could access as public toilets are considered to be 'commercial' premises, which is why the cost might seem high in comparison to systems you might have had installed in your own homes; there have been a number of subsidised schemes over the years for residential properties. As a consequence, the Council's energy costs would significantly increase if it were to look to introduce a solar panel system.
- We won't be able to install a rainwater harvesting system to use 'grey' water to flush the toilets. Unfortunately, the surface area of the roof isn't large enough to generate enough water to act as a reliable alternative means of flushing the toilets. We will look at whether we

can install some water butts and a pump system to use rainwater collected from the roof to water planting areas, but this is something we'll explore once the refurbishment works are complete.

At the moment, there is no reason to think that we won't be able to deliver the project from within the funds that have already been set aside. However – as anyone who has ever undertaken building works will know – things don't always go according to plan and older buildings can often reveal hidden surprises such as lead pipes and asbestos. We've provided some contingency for these sorts of things, but we might yet still be surprised!

Toilet Fittings



Public Consultations

All general and planning policy consultations can be found on the North Somerset Council's (NSC) website at <https://n-somerset.inconsult.uk>

North Somerset Council Local Plan

<https://n-somerset.inconsult.uk/PubVers/consultationHome>

North Somerset Council is preparing a new local plan with a 15 year plan period 2026-2041. "The Local Plan will provide a positive vision for the future of North Somerset, a framework for addressing housing needs, employment requirements and other priorities and a mechanism through which local communities can help shape their surroundings."

"To be sound a Local Plan should be **positively prepared** (seeks to meet the area's objectively assessed needs), **justified** (founded on a robust and credible evidence base and be the most appropriate strategy when considered against the reasonable alternatives), **effective** (deliverable, flexible and able to be monitored) and **consistent with national policy**. If you would like to comment on the soundness of the North Somerset Local Plan Pre-submission version please respond online at using the [ONLINE DOCUMENT](#). The closing date is **Friday 12 December 2025 at 5pm**. All comments received have to be made publicly available. To contact us about the Local Plan email: planning.policy@n-somerset.gov.uk"

Bleadon Parish Council will be finalising its response to these proposals at its 8th December meeting, including aspects such as a Strategic Gap (LP10) to help protect rural Bleadon from Weston expansion plans. A gap has been proposed for Locking and Hutton, but not for Bleadon from the Uphill end, despite previous requests. (See mapping at <https://map.n-somerset.gov.uk/LocalPlan2041.html>) Also, rural and food security issues relating to NSC's strong DP52 (Protection of open space and recreation) vs weak agricultural related DP53 (Best and most versatile land). Full policy proposals at <https://n-somerset.inconsult.uk/gf2.ti/-/1619042/265288165.1/PDF/-/32787%20Local%20Plan%202041%20ACC%20FINAL%20v.2.pdf>

Community Governance Review Consultation

During December NSC officers will be reviewing all submissions and use them to shape any final recommendations it feels appropriate. North Somerset councillors will discuss and agree final recommendations at the December planning and regulatory committee before a reorganisation order is put into effect. Full timetable at <https://n-somerset.gov.uk/council-democracy/councillors-committees/town-parish-councils/community-governance-review> (see also BPN 133 & 134)

Local Devolution Programme - Policy and Framework

<https://n-somerset.moderngov.co.uk/ieListDocuments.aspx?CIId=152&MIId=1274>

NSC are progressing their devolution of services and assets down to Town & Parish councils as indicated at NSC Cabinet on 10th September (see Parish News 134). Any proposal and/or changes affecting Bleadon will be publicly raised and discussed at full council as and when council is made aware of them.

Regional Devolution - WECA membership

<https://n-somerset.gov.uk/news/formal-process-starts-north-somerset-council-consider-weca-membership>

NSC intends to undertake a formal public and stakeholder consultation in the coming months regarding devolution of NSC responsibilities upwards to a regional level.

Electoral Boundary Review

<https://www.lgbce.org.uk/all-reviews/north-somerset>

The Local Government Boundary Commission for England reviews the electoral and boundary arrangements of councils to make sure they are fair. Their reviews include at least two rounds of public consultation before they make recommendations for change. North Somerset Council is due to have its boundary arrangements reviewed. The initial consultation will begin 25 November 2025.

Cllr Jo Gower-Crane (Public Consultations / Engagement / Food Security)

Anchor Inn

Boxing Day Special

Live music with Lukey Q

26th December at 5pm

Tickets only £5

Includes delicious buffet





Avon and Somerset Police NEIGHBOURHOOD POLICING

Talk to us

Join your Neighbourhood Policing Team at

Drop in and speak to PCSO Steve Hemmett, whether you want advice on how to protect your belongings, arrange for free bike security marking, more information about the work we are doing in your area, or you want to raise a concern about an issue in your community.

Time: 12:00 till 13:30

Date:

5/11/25 4/12/25 4/2/26 4/3/26 1/4/26
6/5/26

Their will be no attendance in March

Location: Bleadon Riverside Holiday village
Bridgewater road BS240AN

For more information please visit:
www.avonandsomerset.police.uk/your-area

Follow us on    



Cllr Roles & Responsibilities for the New Financial Year

Portfolio Responsibility	
Affordable housing	All Councillors
Allotments	Cllr Sheppard
Bus Stops	Cllr Sugg
Churchyard/Church Walls	Cllr Sheppard
Church Liaison	Cllr Clarke
Climate Change & Biodiversity	Cllr Gower-Crane
Contactus/Social Activities/Targeted Support/Grants	Cllr Wild
Drains	Cllr Sugg
Finance	Cllr Scarisbrick
Food Security	Cllr Gower-Crane
Halls/Car Park Environs	Cllr Wild
Highways (Safety/Signage/Parking/PC laybys)	Cllr Sugg
Historic Structures – Market Cross, Pump/Well	Cllr Sugg
Life Saving Equipment – Defibs & Bleed Kits	Cllr Wild
Neighbourhood Watch & Community Safety	Vacant
Open Spaces Working Group Chair	Cllr Sheppard
Parish Clock	Parish Clerk
Planning	Cllr Clarke
Planting schemes	Cllr Scarisbrick
Play/Recreation – All ages	All Councillors
Public Engagement/Consultations	Cllr Gower-Crane
Public Rights of Way	Cllr Sugg
Public Toilets	Cllr Wild
Outside Organisations	
ALCA North Somerset Group	Cllr Gower-Crane
Bleadon Youth Club	Cllr Scarisbrick
Coronation Hall Management Committee	Cllr Clarke & Cllr Sheppard
NSC Standards Sub-Committee	Cllr Clarke
Play Area	All Cllrs as Trustees
District Councillors & MP	
District Cllr Terry Porter Email: terry.porter@n-somerset.gov.uk Mobile: 07989 855 339	District Cllr Mike Solomon Email: mike.solomon@n-somerset.gov.uk Mobile: 07768 631 702
Member of Parliament for Weston-super-Mare	
Dan Aldridge MP (Labour) daniel.aldridge.mp@parliament.uk	

Bleadon Village

MONTHLY

MARKET

Saturday

**6th
Dec**

**17th
Jan**

**21st
Feb**

**21st
March**

Coronation Hall and Jubilee Hall

BS24 0PG

9.30am – 12 noon

30+ stalls with:

Fresh local produce.

Goat Meat, Milk, Cheese. Bakery. Eggs. Pies. Savouries.

Preserves. Cakes. In Season Veg. Plants.



BLEADON CHRISTMAS MARKET

Saturday 6th December 9.30 – 12.30

Bleadon Coronation Halls & Youth Club, BS24 0PG

**Over 40 festive stalls – RAFFLE – refreshments
something for everyone**

**Please park carefully in the
village and walk – it's not far!**