

NOTICE OF MAKING OF ORDERS

HIGHWAYS ACT 1980

**NORTH SOMERSET DISTRICT COUNCIL
(PART OF FOOTPATH AX 6/15 BLEADON QUARRY, BRIDGE ROAD, BLEADON)
PUBLIC PATH EXTINGUISHMENT ORDER NO 13 2012**

AND

**NORTH SOMERSET DISTRICT COUNCIL
(PART OF FOOTPATH AX 6/16 ON SOUTH HILL NEAR BLEADON QUARRY,
BRIDGE ROAD, BLEADON)
PUBLIC PATH DIVERSION ORDER NO. 14 2012**

The above Orders, made on 13 December 2012, under sections 118 and 119 of the Highways Act 1980, will extinguish part of Footpath AX6/15 and divert part of Footpath AX6/16 in the Parish of Bleadon over land known as Bleadon Quarry and South Hill within the District of North Somerset as described below:

Extinguish that part of Public Footpath AX6/15 from point A (Grid Ref ST 34108 56505) running in a generally north north easterly direction for a distance of 250 metres to point B (Grid Ref ST 34209 56724), as shown by a continuous bold line on Order Map No. PPO 156a.

Divert that part of Public Footpath AX6/16 from point C (Grid Ref ST 34203 56590) running in a generally north easterly direction for a distance of approximately 60 metres, to point D (Grid Ref ST 34253 56624) as shown by a bold continuous line on Order Map No. PPO 156b to a new line commencing from point C (Grid Ref ST 34203 56590), running in a generally east north easterly, then north easterly, then northerly direction for a distance of approximately 69 metres around the fence line of the quarry to point D (Grid Ref ST 34253 56624) as shown by a bold broken line on Order Map No. PPO 156b.

The width of the new route between points C and D will be 2 metres.

Copies of the Orders and Order maps have been placed and may be seen free of charge at the Town Hall Reception, North Somerset Council, Walliscote Grove Road, Weston super Mare BS23 1UJ from 9.00am to 4.30pm Monday to Thursday (4.00pm Friday) or may be viewed on the Council's Web site www.n-somerset.gov.uk/notices . A copy is also available for inspection at Bleadon Post Office, Purn House Farm, Bleadon, Weston super Mare, BS24 0QF during the following opening hours (Monday to Friday 9.00am to 17.30pm and Saturday 9.00am to 12.30pm). A copy of the orders and maps may be purchased from North Somerset Council at a price of £6.50 each.

Any representations about or objections to the Order may be sent in writing to the Director of Development and Environment, Natural Environment Team, Streets and Open Spaces, Town Hall, Walliscote Grove Road, Weston-super-Mare, BS23 1UJ not later than **7 February 2013** (quoting reference **EB/PPO 156**). Please state the grounds on which they are made.

If no such representations or objections are duly made, or if any so made are withdrawn, North Somerset District Council may confirm the Order as an unopposed Order. If the Order is sent to the Secretary of State for the Environment for confirmation, any representations and objections which have not been withdrawn will be sent with the Order.

Dated: 10 January 2013

N P Brain
Head of Legal and Democratic Services

North Somerset Council
Town Hall
Walliscote Grove Road
Weston-super-Mare
BS23 1UJ

Date: 13th December 2012

**This is a copy of the Order which was sealed by
North Somerset District Council on 13th December 2012**

Highways Act 1980
Section 118

North Somerset District Council

(Part of Footpath AX 6/15 Bleadon Quarry, Bridge Road,
Bleadon)

Public Path Extinguishment
Order No. 13 2012

N P Brain
Head of Legal and Democratic Services
Town Hall
Walliscote Grove Road
Weston-super-Mare
BS23 1UJ

HIGHWAYS ACT 1980, SECTION 118

NORTH SOMERSET DISTRICT COUNCIL

**(PART OF FOOTPATH AX 6/15 BLEADON QUARRY,
BRIDGE ROAD, BLEADON)**
PUBLIC PATH EXTINGUISHMENT ORDER NO. 13 2012

This order is made by North Somerset District Council (“the authority”) under Section 118 of the Highways Act 1980 because it appears to the authority that the footpath described in paragraph 1 below is not needed for public use.

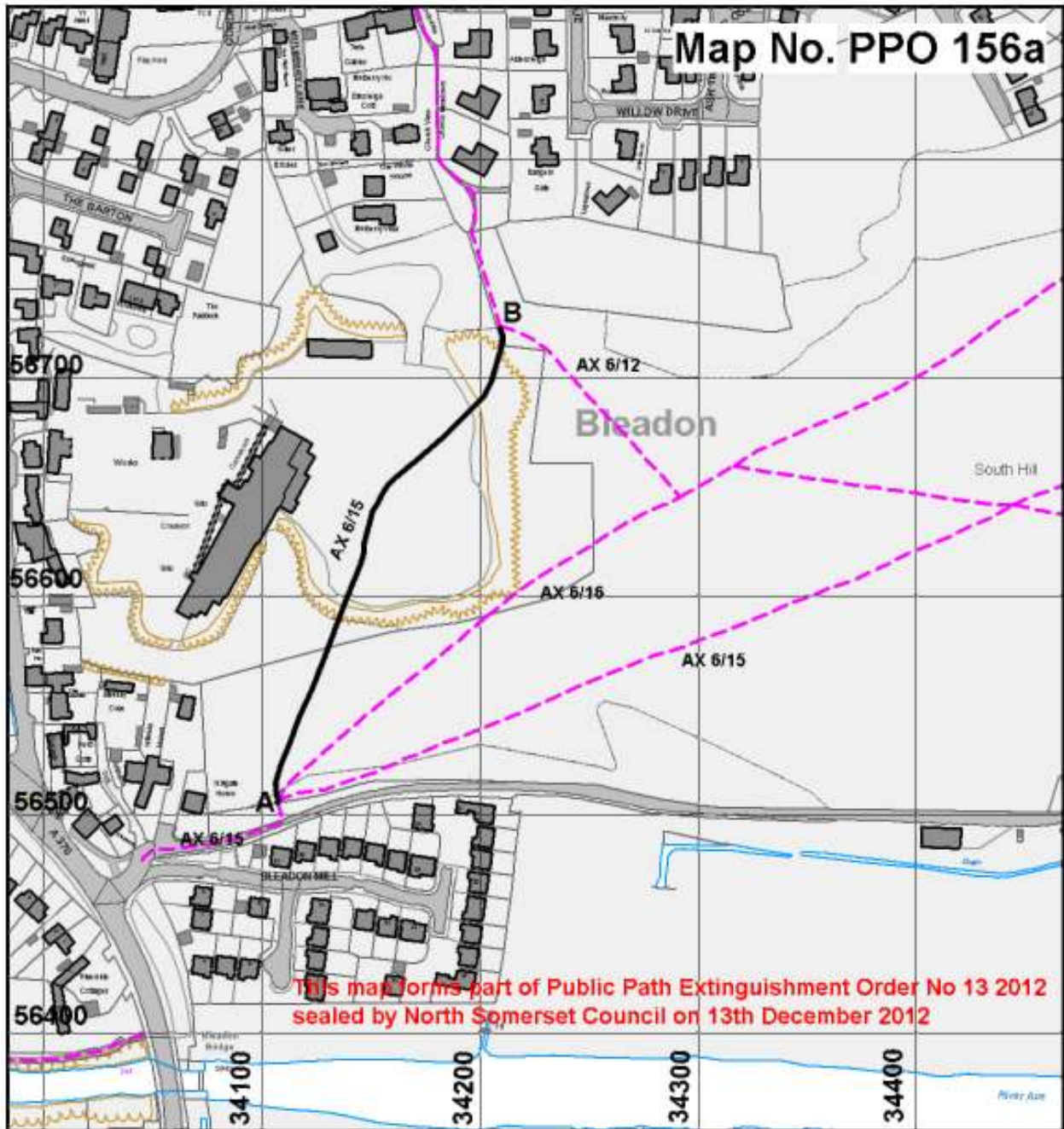
BY THIS ORDER:

1. The public right of way over the land situate at Bleadon Quarry, Bridge Road, Bleadon and shown by a continuous bold line on the map PPO 156a attached to this order and described in the Schedule to this order shall be extinguished on the date of confirmation of this order.

SCHEDULE

DESCRIPTION OF SITE OF EXISTING PATH OR WAY

That part of Public Footpath AX 6/15 from point A (Grid Reference ST 34108 56505) running in a generally north north easterly direction for a distance of 250 metres to point B (Grid Reference ST 34209 56724), as shown by a continuous bold line on Map No. PPO 156a.



Highways Act 1980 - Section 118 North Somerset District Council

Public Path Extinguishment Order No 13 2012

Footpath AX 6/15 Bleadon Quarry, Bridge Road, Bleadon



Development & Environment

Public Rights of Way
Streets and Open Spaces
North Somerset Council
Town Hall
Walkscote Grove Road
Weston-super-Mare
BS23 1UJ
Tel: 01934 886 802



Scale 1:2500

Date 3 December 2012

Grid Square ST 3456

Drawn by E Bowman

Path to be extinguished **A - B**

Connecting Paths **-----**

Given under the Common Seal of North Somerset District Council the 13th day of December 2012.

THE COMMON SEAL of)
NORTH SOMERSET)
DISTRICT COUNCIL)
was hereunto affixed in)
the presence of:)

**North Somerset District Council
Seal no. 014843 was affixed here**

HEAD OF LEGAL AND DEMOCRATIC SERVICES

Date: 13th December 2012

**This is a copy of the Order which was sealed by
North Somerset District Council on 13th December 2012**

Highways Act 1980
Section 119

North Somerset District Council

(Part of Footpath AX 6/16 on South Hill near Bleadon
Quarry, Bridge Road, Bleadon)

Public Path Diversion Order
No. 14 2012

N P Brain
Head of Legal and Democratic Services
Town Hall
Walliscote Grove Road
Weston-super-Mare
BS23 1UJ

Ref: PPO 156

HIGHWAYS ACT 1980

NORTH SOMERSET DISTRICT COUNCIL

**(PART OF FOOTPATH AX 6/16 ON SOUTH HILL NEAR
BLEADON QUARRY, BRIDGE ROAD, BLEADON)**

PUBLIC PATH DIVERSION ORDER No. 14 2012

This Order is made by North Somerset District Council (“the authority”) under Section 119 of the Highways Act 1980 (“the 1980 Act”) because it appears to the authority that in the interests of the owners of the land crossed by the footpath described in paragraph 1 of the Order it is expedient that the line of the path should be diverted.

The applicants have agreed to defray any compensation which becomes payable in consequence of the coming into force of this Order and any expenses which are incurred in bringing the new site of the path into a fit condition for use by the public.

BY THIS ORDER:

1. The public right of way over the land situated on South Hill near Bleadon Quarry, Bridge Road, Bleadon and shown by a bold continuous line on the Map No. PPO 156b contained in this Order and described in Part 1 of the Schedule to this Order shall be stopped up after 28 days from the date of confirmation of this order.
2. There shall at the end of 28 days from the date of confirmation of this Order be a public footpath over the land situated on South Hill near Bleadon Quarry, Bridge Road, Bleadon described in Part 2 of the Schedule and shown by a bold broken line on the Map No. PPO 156b as attached to this Order.

SCHEDULE

PART 1

DESCRIPTION OF SITE OF EXISTING PATH OR WAY

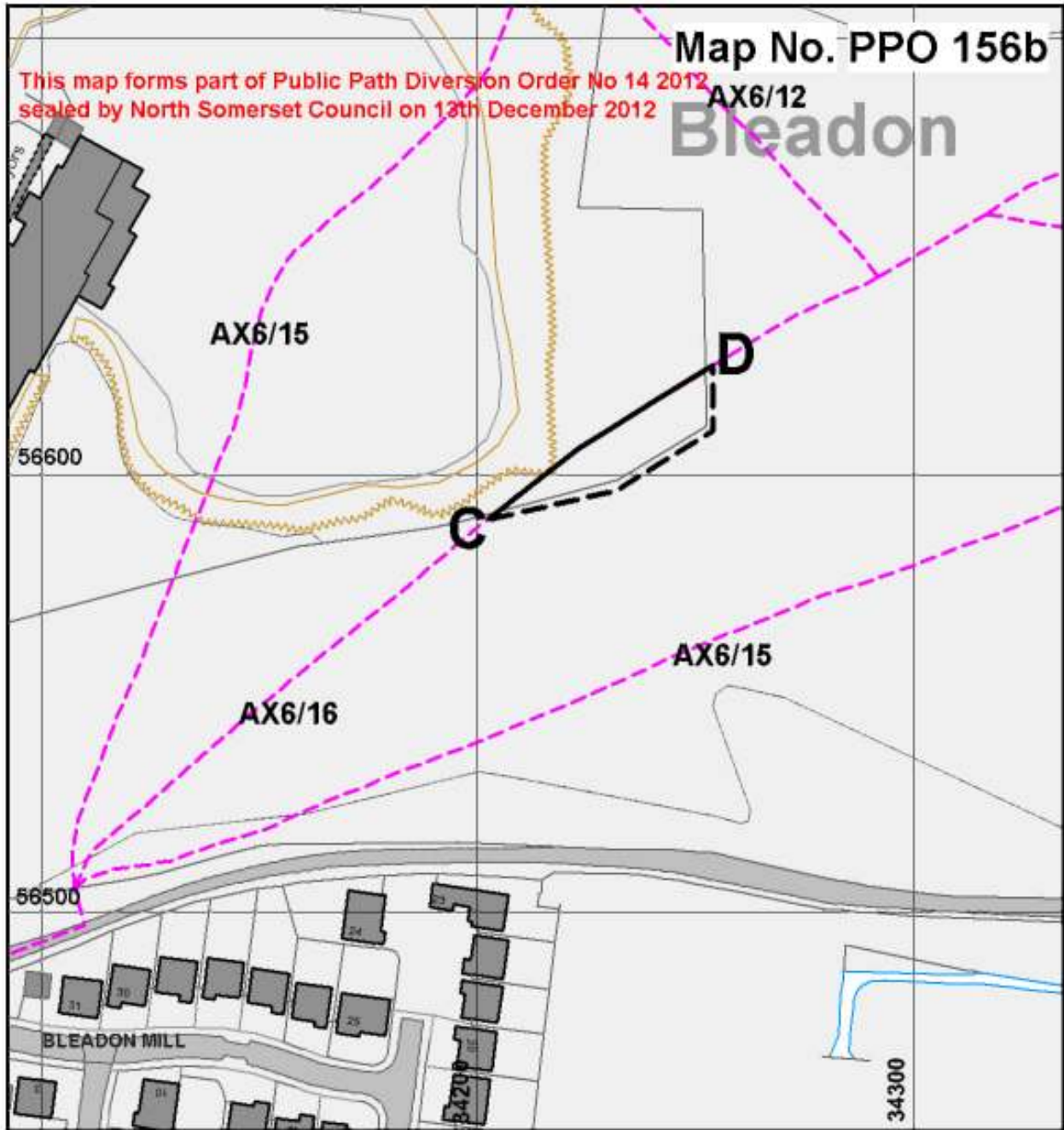
That part of Public Footpath AX 6/16 in the Parish of Bleadon from point C (Grid Ref ST 34203 56590) running in a generally north easterly direction for a distance of approximately 60 metres, to point D (Grid Ref ST 34253 56624) as shown by a bold continuous line on Map No. PPO 156b.

PART 2

DESCRIPTION OF SITE OF NEW PATH OR WAY

A public footpath to be known as Footpath AX 6/16 in the Parish of Bleadon will commence from point C (Grid Ref ST 34203 56590), running in a generally east north easterly, then north easterly, then northerly direction for a distance of approximately 69 metres around the fence line of the quarry to point D (Grid Ref ST 34253 56624) as shown by a bold broken line on Map No. PPO 156b.

The width of the new route between point C and D will be 2 metres.



Highways Act 1980 - Section 119 North Somerset District Council
Public Path Diversion Order No 14 2012
 Footpath AX 6/16 on South Hill, near Bleadon Quarry, Bleadon

 <p>North Somerset Council Development & Environment Public Rights of Way Streets and Open Spaces North Somerset Council Town Hall Walkscote Grove Road Weston-super-Mare BS23 1UJ Tel: 01934 886 802</p>	<p>Location Plan</p>  <p>Not to Scale</p>	<p>Scale 1:1250 </p> <p>Date 3 December 2012 Grid Square ST 3456 Drawn by E Bowman PATH TO BE DIVERTED</p> <p>Existing C - D Proposed C - D Connecting Paths</p>
--	--	---

© Crown copyright and database right 2012 Ordnance Survey 100022207. You are not permitted to copy, sub-license, distribute or sell any of this data to third parties in any form.

Given under the Common Seal of North Somerset District Council the 13th day of December 2012.

THE COMMON SEAL of)
NORTH SOMERSET)
DISTRICT COUNCIL)
was hereunto affixed in)
the presence of :)

**North Somerset District Council
Seal no. 014841 was affixed here**

HEAD OF LEGAL AND DEMOCRATIC SERVICES