

BLEADON



Village News

NUMBER FOURTEEN

The White Cottage Restaurant

Bridgewater Road Bleadon
Weston-super-Mare
Somerset
BS23 0AN



Tel:(0934) 812326

OPEN TUESDAY - SATURDAY LUNCH & DINNER
TRADITIONAL SUNDAY LUNCH

We cater for Private Parties, Small Weddings
and Business Meetings with Menus to
suit you.



Sanders

Sanders, A370 Bridgewater Road, Lympsham, Weston-super-Mare, Avon Telephone: 0934 812652

There is only one Sanders Supermarket.
Come and experience the difference.
We offer a wide variety of fresh, quality
goods, where value for money is
guaranteed. Our specialist staff are
there to advise on your choice of meats,
cheeses and wines to complement. In all
a queue free, convenient supermarket
open seven days a week.



BLEADON VILLAGE NEWS

No: 14

June '92

Your 1992 - 93 Parish Council

At the Council's Annual Meeting on 11th May the following were elected:

Chairman:	Brenig Evans	(Tel: 815352)
Vice-Chairman:	Richard Strode	(Tel: 815141)
Planning Committee Chairman:	Eric Benn	(Tel: 812763)
Planning Committee Vice-Chairman:	Jill Bowmer	(Tel: 814801)
Open Spaces Committee Chairman:	George Wall	(Tel: 812203)
Open Spaces Committee Vice-Chairman:	Jill Bowmer	(Tel: 814801)
Footpaths Officer:	Les Masters	(Tel: 812200)

CHAIRMAN'S REPORT

Dear Parishioner

Twelve months ago I was elected Chairman of Bleadon Parish Council. An inexperienced Chairman of an inexperienced Parish Council. Councillor Wall had seventeen years service, Councillor Strode had two years, Councillor Masters and myself had just twelve months; all other five Councillors were new, almost virginal.

One of my stated aims was to see that the Councillors worked with each other, for each other, to the benefit of our Parish. I believe that this aim has been achieved; we are a good team. We do not always agree, but we never bear each other any animosity or malice. We always support the majority view. The Parish Council has a wide base of experience and expertise. The way Local Government seems to be developing means that this expertise will become even more important in the future.

The major problem, inherited by this Council, was that of Wonderstone Quarry. Whilst I am unable to give details of this complex and expensive disagreement I can say that progress is being made. I hope that we are in a position to give a full, and final, report in the coming few months.

The Youth Club Lease has been another long standing item on our agendas. Much discussion has taken place, and some concessions made by both the Parish Council and the Youth Club Trustees. The final draft is being drawn and, hopefully, should be signed very soon.

Last year the Parish Council provided three street lights in our village. I hope you agree that they are beneficial but not too intrusive. We honoured our promise to circulate an opinion poll about further lights. These were delivered to the vast majority of the houses in the Parish. Regrettably, some houses appear to have been missed, for which I apologise. We received 182 replies; two were spoilt; 122 said 'Yes' and 50 replied 'No'. The Parish Council has decided to further increase the number of lights in the Village before next winter. I would ask those of you who are against street lighting to consider the elderly who want it, to consider the Police who recommend it, and to consider the number of dangerous road junctions in the Village.

The problems of drainage and of the very poor road surface at The Veale have been with us for many years. This Parish Council made further representations to Woodspring, to have the work completed. I am delighted to report that the drainage work was completed some months ago. The work on the road surface and pavements should commence in June.

We also had to continue the fight against the imposition of a Gypsy Caravan Site at Purn Farm. As you all know we were successful in preventing the proposed site coming to Bleadon. Councillor Wyatt tells us that the site was turned down because of the development costs. However, I do feel that all the other arguments must have helped, and also the marvellous behaviour of all who attended the Public Meeting.

On the subject of Gypsies, some moved into Faceum Lane a few months ago. Thanks to the efforts of Councillor Wall, Councillor Kerr and Avon they were moved on, only to be replaced two weeks later by four more Gypsy families. They have now gone and we can thank Woodspring District Council for that as they were the authority that caused the gypsies to move on.

I close by offering words of thanks. Starting with my colleagues on the Parish Council, whose dedication, help and support have been invaluable over the past twelve months. It would be wrong of me to name any individuals as they have all been superb. To County Councillor Wyatt and to District Councillor Kerr, for their efforts on behalf of our community and their encouragement to me. Particularly to our Clerk, Bruce Poole, who has been a tower of strength and the willing mentor to an inexperienced Chairman.

Finally, to you, the electors and parishioners of Bleadon for your kindness, support and for your help. Thank you all, very, very much.

Brenlg Evans

Bleadon Coronation Hall

The Hall A.G.M. produced a strong Committee of willing volunteers dedicated to providing and improving the hall's facilities for the benefit of all village organizations and residents.

Peter Lindsay returned as Chairman with Len Chamberlain as Vice Chairman, Ron Goodman and Pat Simmons continue as Secretary and Treasurer.

The Spring Coffee Morning raised over £80.00, and was a pleasant sociable event as usual. Thank you for your support. Forthcoming fund raising events include a Skittle Week at the Queens Arms (18th - 23rd August), Jumble Sale (3rd October), and Christmas Coffee Morning (5th December). An application has been received for a series of Tea Dances in the Autumn.

The Hall Committee has started an initiative to encourage co-operation between the Parish Council, Hall Committee, and Guides/Scouts Committee to investigate a joint venture to further develop the Hall's amenities in conjunction with a new Guides Headquarters to replace their existing rather tired wooden structure.

The public address system has now been installed, thanks to the efforts of several people. Eric Benn shopped around to select the equipment, and supervised the installation. John Brooke made the metal retaining straps for the speakers and Woody White the cabinet for the amplifier, both free of charge. Matthew White gave invaluable help with the installation.

This equipment is available to all Hall users for a modest fee.

**Peter Lindsay
Chairman**

BLEADON CORONATION HALL FORTHCOMING EVENTS FOR YOUR DIARY

Friday 3rd July	BRASS BAND CONCERT	-	Bleadon Church
Saturday 4th July	BLEADON GUIDES CELEBRATION		
Saturday 22nd Aug	JUMBLE SALE	-	Bleadon W.I.
Saturday 5th Sept	AUTUMN SHOW	-	Horticultural Society
Thursday 17th Sept	CONTACTUS PARTY		
Fri/Sat: 2nd/3rd Oct	CHARITY VARIETY SHOW		
Saturday 3rd Oct.	JUMBLE SALE	-	Hall Management Committee
Sunday 4th Oct:	HARVEST LUNCH	-	Bleadon Church

The Hall is available for hire by any private individual or organisation,

ENQUIRIES TO: Mrs J Jones, 812370

YOUR VILLAGE HALL DIARY

REGULAR EVENTS IN THE CORONATION HALL

MONDAYS

		Contact:	Telephone:
10.30-12.00(Sept-May)	Gentle Exercise Group	Mrs P Dain	812859
2.00- 4.00pm	Bleadon Bridge Club	Mr D Gardiner	812041
7.30pm(1st Mon)	British Sugarcraft Guild	Mrs J Garrad	632632
	W-S-M Branch		
7.30pm (2nd Mon)	Parish Council		

TUESDAYS

2.00 - 4.00pm (2nd Tue)	Women's Institute	Mrs P Brent	812640
7.30pm (1st,2nd & 4th)	Weston-super-Mare	Mr K Tapley	623877
	Camera Club (from Sept.)		

WEDNESDAYS

10.00-12.00am (4th Wed)	Infant Welfare Clinic and Toddler Group		
2.00- 4.00pm	Whist Drive	Miss B Snelgrove	
(from 9 October)	in aid of Scouts & Guides		812226
7.30 p.m.	Bleadon Players	Mr F Davies	812858

THURSDAYS

2.00- 4.00pm	Painting Class	Mrs K Savage	621301
(Sept - May)	"Painting to extend your abilities"	WSM Tech College	
7.30 p.m.	Folk Dancing	Miss B Snelgrove	
(1st & 4th Thurs)	Sept-June		812228

FRIDAYS

10.30am	Exercise Class	Mrs D Saunders	511398
2.00- 4.00pm	Friendship Club	Mrs E M Tucker	813940
7.30pm.	Short Mat Bowling Club	Mr J Ward	812136

SUNDAYS

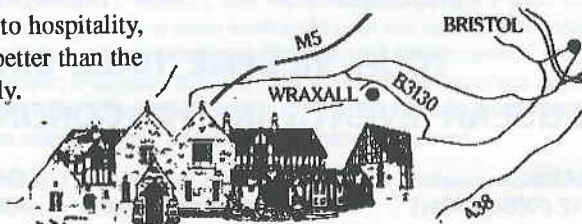
3.00-5.00p.m.	Short Mat Bowling Club	Mr J Ward	812136
---------------	-------------------------------	-----------	--------

CATHERINES INN ~ THE NEW BATTLE AXES

Giorgione's Fayre for all the family
Book early to avoid disappointment

Eat, Drink and be Merry!

When it comes to hospitality,
no-one does it better than the
Giorgione family.



THE NEW BATTLE AXES

Old Bristol Road, Wraxall

WESTON-SUPER-MARE Nailsea 852645/851015



CATHERINES INN

Bleadon Road, Bleadon

W-s-M (0934) 812275

TWO FINE INNS

These two busy, successful inns provide good companionship, a wonderful range of real ales, lagers, wines and spirits and the most generous Carvery food.....

Mouthwatering slices from perfect roasts, freshly prepared vegetables, steaks grilled to your liking, fish and poultry and a selection of continental dishes.

Highly recommended and very good value.

Experience it for yourself and discover why these two Fine Inns are well worth finding!

THE GIORGIONE GROUP

Bleadon Short Mat Bowling Club

It has been a busy three months since I last wrote in the Village News, with a substantial increase in club activities. A large number of the club members enjoyed a two to four day long weekend, in the Royal York and Faulkner Hotel in Sidmouth, at the end of March. The hotel has its own short bowling mat and we were able to get in much bowling and also find time to enjoy the largely unspoiled environs of Sidmouth. All who went voted it a great success.

Apart from our regular bowling on Fridays and Sundays we have also used other available evenings in the hall to play off club competitions. These comprised ladies' doubles and singles, mens' doubles and singles and mixed doubles. We have also been 'at home' for friendly matches with both Kewstoke and Exeter Nomads. Our club won on both occasions. We are looking forward to a summer return match against Exeter.

We have now closed down for the summer although we will still be meeting to play the last few club competition matches. We shall commence our 1992/93 season on Friday the 18th September. That evening will open with our A.G.M. at 7.00 p.m. and be followed with bowling.

May I please ask all members to consider their nomination(s) for the club committee (7 members) to include the roles of Chairman, Secretary and Treasurer. It would be nice to have some new volunteers for these jobs as the current people have held the jobs for three Years. This coming season we shall also wish to create a selection committee for club players in matches and external competitions. This is particularly necessary since we shall be playing regularly in the newly created Woodspring Short Mat Bowls League.

John Ward

Bleadon Village Bridge Club

The club is still thriving, with a full complement of members attending with great regularity - even on Bank Holidays. Bridge seems to be as addictive as golf, without the rain!

Our Annual General Meeting was held on May 18th with most members present. The Committee and Officers were re-elected. Average attendance throughout the year has been 34.

Our aim of providing a relaxed afternoon of friendly Bridge seems to have been most successful.

Don Gardiner

Editor's Mid-Summer Honours List

O.B.E. (Order for Bleadon 'Elpfulness)

- | | | |
|-------------------------------------|---|--|
| Jill Bowmer | - | for services to the Jubilee Garden. |
| Richard Strode / George Wall | - | for planting the village's tubs. |
| John Riding | - | for services to the drainage around Church Meadow. |
| Andy Ballard | - | for his suggestion of constructing steps on South Hill, for which task the Parish Council have agreed to provide him with materials. |

Royal British Legion

Men's and Women's Sections, Lympsham and Bleadon

We were represented at the South Mendip Women's Section Group Meeting held at Weston-super-Mare on April 7th. Two Certificates were received in the Handicraft Competition. Mrs Sims read the Two Minute Report and Mrs Fear gave the Vote of Thanks.

Mrs Clarke attended the National Conference at Blackpool on April 24th and 25th, and she enjoyed the weekend.

The Branch held a Social Evening on Friday May 15th. The Women's Section provided an enjoyable Buffet Supper, and the Lympsham Sports Club provided the bar. An enjoyable evening was spent by all. The profit was shared by both Branches. A special "thank you" to all who attended.

£10 has been sent towards expenses for the Transplant Games at Exeter, and £20 to the March Haring Fund. This money goes to Headquarters to provide money for the Widows Benevolent Birthday Fund. Each widow on Ex-Service Allowance will receive a card and £5 on her birthday.

Mr and Mrs Clarke are hoping to visit Crosfield House in Wales while on holiday. This is a house for ex-service people where we have a resident, Mr R. Price, to whom we write. We are sure this visit will be much enjoyed.

St. Peter and St. Paul, Bleadon Women's Fellowship

Mr Michael Horseman took members on a trip down the Kennet and Avon Canal at the April Meeting, when he gave a talk on the Kennet and Avon Trust, illustrated with beautiful slides and souvenirs. He was warmly thanked by Mrs Hillier who has spent many holidays staying by the canal at Little Bedwyn, near Hungerford.

In May the speaker was Mr Ray Mort who gave members an insight into the splendid work of the Church Army, particularly among the "cardboard box" dwellers in London.

Our leader Mrs Cullen was very pleased to report the result of the Book Stall at the May Day Fayre, which raised the best ever amount of £182.67. The Spring Coffee Morning was also a great success, £77.60 being added to funds.

The Annual Meeting will be on June 23rd, when the committee will be providing afternoon tea.

The first meeting of the Women's Fellowship Year will be on Tuesday September 22nd with a short service in Church followed by tea and a chat in the Church Room. Annual Subscription is £1, and new members will be made very welcome.

Barbara Hillier

A FEW NOTES ON HOME SECURITY

It will have escaped no-one's notice that in recent months there have been a number of break-ins in Bleadon, and the distress caused by a burglary has to be experienced to be believed. Our village, however, has a relatively low crime rate even compared with neighbouring villages and, if we all take a few simple precautions, we can help to keep it that way.

It is a sad fact that no security system, however sophisticated, will deter a determined professional burglar. Few of us, however, live in the type of properties that would attract that kind of attention. We can do a great deal towards deterring the opportunistic thief or casual burglar.

For instance, if you go away, try to get a neighbour to check the Property regularly to make sure there are no obvious signs of absence. Even if you have cancelled the milk and papers, a build-up of mail, free papers, etc. collecting on the inside of a glass fronted door will be a real give away. Can your friend park his or her car in your drive overnight? A cheap timing device, plugged into an electric point, that brings on a lamp when it gets dark can be effective in making a house look occupied. Make sure that all exterior doors, including those on sheds and garages, are locked and windows closed even if you are only out for a very short time. Also, if working in the garden, lock any doors that are not in view.

After dark a Property becomes even more vulnerable so make sure the exterior is well lit. Movement detectors linked to external lights are very useful for this and a good one can be adjusted to as wide, or narrow, area as you require. Don't just think about the front as the back of a house is even more vulnerable, being where most thieves gain entry.

A common way of illegal entry is to break a window pane or door panel. Double glazing makes this slightly more difficult but the type with the glazing beads on the outside can have the whole pane of glass removed very quickly and is therefore no safer. If you are considering replacing windows this is something to be taken into consideration.

A full alarm system can be as simple or as complicated as you wish. Basically most systems consist of sensors that will trigger the alarm when doors or windows are opened and movement detectors that also activate the alarm. The alarm is usually on the outside of the house to alert others but it is also a good idea to have a very loud alarm inside as this acts to unnerve and disorientate the intruder. Alarm systems are usually arranged in zones so that parts of the house can be isolated when the alarm is in use, e.g. the upper floor at night. If you live isolated from other dwellings it is useful to have a system which automatically telephones a control room who contact the police when an alarm is either activated or tampered with. Finally, an alarm system need not be very expensive to be effective, as often "simple is best" but make sure you get several quotations or a personal recommendation before deciding.

Unfortunately life has changed and we can no longer go out leaving doors unlocked, knowing we can return to an untouched house. On the other hand we need not be unnecessarily worried either, as we live in a place that is safer and more crime free than most. We must just be a little more on our guard.

Marlan Perkins

1st Bleadon Scouts

Congratulations to our raft team who were runners up in the local Raft Race on the Marine Lake. Points were awarded for both the construction and the challenging races which tested to the utmost, the seaworthiness of the craft! The event also helped to raise money for local charities.

At the end of May, six scouts took part in the Avon Jamboree at Woodehouse Park, Almondsbury. It was a truly International event with patrols from Bulgaria and Holland.

Our Annual Barbecue is being held on Saturday 11th July at Batch End Farm. We are having some new attractions this year including Laser Shooting, and with a bar and food it promises to be a great night!

This year we are returning to Batsom Farm on Exmoor for our Summer Camp at the end of July.

Our cub pack is in danger of closing unless a new Leader can be found to take over from Penny Jeffrey. If you can help, please contact Penny or myself.

David Boley
Scout Leader - Telephone 750666

Bleadon Playgroup

Bleadon Playgroup runs three mornings a week, Monday, Tuesday and Thursday, 9.30 - 12.30.

This Summer term the playgroup is going to have a Teddy Bears Picnic and will be visiting a local farm, and hopefully we shall be receiving a visit from the Weston-super-Mare Fire Service. The photographer will also be visiting us later this month.

We are also happy to receive visitors, especially if anyone has any special gift they can share with us. For further information about the Playgroup, please contact:-

Mrs C. Richardson, Telephone 812704.

PURN HOUSE FARM ~ OPEN DAY 1992

We are holding a farm open day on Sunday 19th July 2.00pm - 5.00pm

**See the cows being milked - Farm staff will be available to show you around
Help feed the calves - We will be giving guided walks of the hills.**

**Craft workshops open - Wood carving Demonstrations - Fair Organ playing
Teas on the Farmhouse lawn**

**Free Entry & Parking In aid of Cystic Fibrosis Research Trust
Tel: 812324 / 815586**

Wellies should not be necessary unless it is wet!

Bleadon Friendship Club

Members heard with much sadness of the death of Mrs Edna Stephens, wife of President Mr Wally Stephens, and messages of sympathy were sent to him.

The Club's Coffee Morning on May 21st was not as well supported as usual, but raised £61.26 after expenses. Members were thanked for their contributions and hard work in organizing the event. Owing to the illness of Mrs Edna Addison, Social Secretary, Mr R. Addison has not been able to arrange the usual outings, but Mr Harold Christian has organized on Friday June 19th, a visit to Tiverton, and a trip on the canal by horse drawn barge. Entertainment continues with the "Avalon Band" on June 5th, followed by a talk on Weston Hospice, and the Golden Age of Dance Bands, etc..

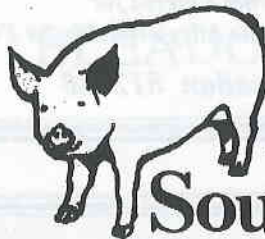
E.M.T.

A Helpful Step Forward

Some of you may remember that a few months ago, I wrote to the Badgerline Company requesting a permanent 'bus stop at the Queen's Public House on the 83 route from Weston-super-Mare. To my great surprise - and pleasure - that request has been approved. The stop will be a "setting down only" one, and my impression is that it will be put into effect fairly soon.

I know that Badgerline have to take a lot of stick from the public (often justifiably), but my thanks are due to Mr Bailey, the Operations Manager for Weston-super-Mare and Wells, who dealt with my request so courteously, and acted so promptly. I even feel that, with one or two exceptions, the drivers on our route are feeling more cheerful. I hope that you agree.

Angela M. Parkinson



**Bacon
South West**

THE BRISTOL BASED BACON SLICER

it's the **B**est it's **S**electd it's a **W**inner

0272 827786

WE WELCOME ALL ENQUIRIES

WHY NOT ASK



DUDLEY'S

TO CALL?

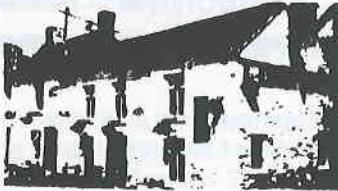
Home cooked meats
Weekly counter best buys
Home freezer specials
Home made sausages

FREE DELIVERIES TO BLEADON

14 BAKER STREET WESTON-SUPER-MARE
Telephone: 625440

The Queens Arms

Bleadon Village, Nr. Weston-super-Mare



Good Beer & Good Value
Bar Meals and Snacks
Parties Catered for
Skittle Alley available for Functions

Bleadon 812080

BRIDGE GARAGE

(Prop: Peter Briffitt)
BLEADON VILLAGE

AT YOUR SERVICE

TELEPHONE 0934 - 812206

PHONE: (0934) 620106

TRAPNELL'S MODEL SHOP

*82 MEADOW STREET
WESTON-SUPER-MARE
AVON*

RADIO CONTROL
SPECIALIST

HORNBY
TRAINS

IAN DANCE

Plumbing & Heating Contractor
Corgi Registered Installer

BLEADON 813686

Glenise and Les Masters

BLEADON POST OFFICE

*Newsagents * Off Licence * Groceries * Bread * Milk
Toys * Hardware * Wool * Haberdashery
Cigarettes * Confectionery * Greetings Cards * Stationery*

Tel: 812200

SELF-DRIVE

CAR HIRE

TONY MOORE · PURN HOUSE FARM

1.3 and 1.6 litre modern

SALOONS and HATCHBACKS

**** Tel: Bleadon 812324 ****

CLEMENTS SERVICES

ELECTRICAL & HOUSING MAINTENANCE

"SAFETY and SECURITY"

YOUR convenient *LOCAL* service

Also your local agent for

Dolphin

LUXURY **FITTED** BATHROOMS, SPAS AND SHOWERS

**** DESIGN AND SALES ****

Telephone for free brochure

Howard Clements

BLEADON 0934 815249

Edited by Les Masters, Bleadon Post Office
Published by Bleadon Parish Council, Bleadon, Avon.

Unless otherwise stated, the opinions and comments expressed in this newsletter are those of the contributor and not Bleadon Parish Council.

The Parish Council is greatly indebted to John Hickley and David Box for the production of this newsletter.

Atlas 
STONE PRODUCTS

**Bridge Road
Bleadon**

Telephone: 0934 812358

Prolectric



Services

Electrical Contractors

- * Fire Protection Specialists
- * Design Installation & Maintenance
- * Servicing & Testing of Fire Alarm Nurse Call & Emergency Lighting
- * General Electrical Repairs & Maintenance
- * Free Quotations upon Request

**24 HR EMERGENCY
CALL OUT**

56 Moorland Road

Weston-s-Mare

Tel: (0934) 636134

PURN HOUSE FARM WORKSHOPS

Purn Way, Bleadon, Weston-super-Mare

- | | | |
|---------------|--|---------------------------|
| UNIT 1 | J. B's WOODCRAFT | Tel: 0934 - 812001 |
| | Purpose made, made to measure Furniture, Joinery & Carpentry | |
| UNIT 2 | WOODY WHITE | Tel: 0934 - 815374 |
| | Fairground Woodcarver & Wood Converting Service | |
| UNIT 3 | G. W. MASON | Tel: 0934 - 815379 |
| | Manufacturers, Restorers and Fitters | |
| | Cornices, Ceiling Roses, Archways, Niches | |



CARPENTER & JOINER

**WINDOWS - DOORS - PRCHES - SECURITY LOCKS
uPVC FACIA BOARDS - CLADDING & GUTTERING
FENCING - REPLACEMENT FITTED KITCHENS**

**ALL WORK GUARANTEED
24 HOUR EMERGENCY SERVICE**

Mike Whittaker

W-s-M 415945

