

BLEED N
VILAGE
NEWS • 11

JOHN
HICKLEY '91

The White Cottage Restaurant

Bridgewater Road Bleadon
Weston-super-Mare
Somerset
BS23 0AN



Tel:(0934) 812326

OPEN TUESDAY - SATURDAY LUNCH & DINNER
TRADITIONAL SUNDAY LUNCH

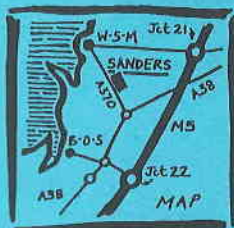
We cater for Private Parties, Small Weddings
and Business Meetings with Menus to
suit you.



Sanders

Sanders, A370 Bridgewater Road, Lympsham, Weston-super-Mare, Avon Telephone: 0934 812652

There is only one Sanders Supermarket.
Come and experience the difference.
We offer a wide variety of fresh, quality
goods, where value for money is
guaranteed. Our specialist staff are
there to advise on your choice of meats,
cheeses and wines to complement. In all
a queue free, convenient supermarket
open seven days a week.



BLEADON VILLAGE NEWS

No: 11

September '91

Dear Parishioner

In this issue of the Newsletter I intend to be specific, and deal with just two items that are taking up some of your Council's time.

At the end of July a Planning Application was received from Honda (UK) Ltd. This requested permission to retain the Honda sign at Hutton Motor Company, on the junction of the A370 and Bleadon Road. The Parish Council made representations to both Avon and Woodspring Councils and to the Police. All three of these authorities agreed to support our opposition to this application on the grounds that the sign was a "Road Traffic Safety Hazard".

To further support this objection the Parish Council adopted a suggestion, made by Mr Dennis Coombe, that a Road Traffic Census and Petition should be made on the junction of the A370 and Bleadon Road.

Councillor Jill Bowmer organised, supervised and controlled this project. She was supported and helped by Avon and Woodspring Councils and by the Police. The Census and Petition were an outstanding success. I feel sure that the results proved invaluable at the Planning Committee Meeting which considered the application.

I am delighted to report that the application by Honda (UK) Ltd. was refused.. The Honda Pylon sign has to be removed and resited. My thanks to Councillor Jill Bowmer, Mr Coombe and the other few volunteers who worked so hard, for no financial reward, to support the Parish Council.

The proposed Gypsy Caravan Site, off Accommodation Road, is an ever increasing threat to our way of life. I have been told, unofficially, that Bleadon is the most favoured site. Your Parish Council is fighting very hard, behind the scenes, to negate this plan. We need as much help as we can muster to fight off this threat to our village and our way of life. To be threatened with a resident Gypsy site for five "families" is frightening, to have a Gypsy Transit Site imposed on us would be a near fatal blow to life as we now know it.

There will be a Public Exhibition in the Coronation Hall on the 19th and 20th November. Forms will be available for members of the public to register their comments. Please go to the exhibition, complete a form about their proposals. On Tuesday 26th November a Public Meeting will be held in the Coronation Hall. Avon County Council have organised the meeting and representatives of that Authority will be in attendance. The meeting starts at 7.30pm and I beg you, please turn up to air your views. We need to fill the hall to capacity. Should only a few of us be present, Avon could be forgiven for considering the majority of Bleadon to be apathetic. A large, committed and forceful attendance may force them to re-think their strategy. I look forward to seeing you on the 26th November, and at our monthly Parish Council Meetings.

Yours sincerely
Brenig Evans
Chairman

HARMONY IN AUTUMN

If you have tickets for Phantom of the Opera on the evening of October 19th we are willing to accept them in lieu of cash for tickets for Harmony in Autumn at the Coronation Hall on the same evening. This unrepeatable show is being specially staged to raise money for the church and the hall, and will display not only the variety of musical talent resident in Bleadon but that of guests from Oldmixon, Hutton, Locking and even Bridgwater. For those paying cash, tickets will cost £2.50, available from Hall Committee members and the Post Office. Genial Uncle Len will as always be mine host at the bar, while kind Auntie Ruth will ensure a plentiful supply of tea, coffee and biscuits.

A370 TRAFFIC CENSUS

On the 19th August, 1991 between the hours of 8 a.m. and 6 p.m. a traffic census was carried out on behalf of Bleadon Parish Council. The purpose of this was twofold:-

- a) To assess the traffic flow entering and leaving Accommodation Road via the junction with the A370 at the Anchor Inn to try and strengthen our case against any possible proposal to locate a Gypsy Site in this vicinity. The final count over the 10 hour period was a staggering 2,950 vehicles.
- b) To petition motorists leaving Bleadon Village via Bleadon Road and the junction with the A370 in support of the Parish Council who wish to bring pressure to bear in an attempt to get the Honda sign sited on the approach to the forecourt of Hutton Motor Company re-positioned as it severely restricts the vision of drivers using this junction.

182 signatures were collected from 330 vehicles on the road that day, the balance of 148 either did not wish to stop, or it was considered unsafe to stop them at the time. Those who did pull up were very willing to sign the Petition with the exception of 5.

I would like to offer my sincere thanks to Dennis Coombe, Bill McCoubrey, Christine Lawrence, Roger and Maureen Goddard and David and Barbara Driver for their co-operation and valuable time, without which this census would not have been possible, and thanks also to all those who took the time to stop and sign the Petition - let us hope it will do the trick!

Jill Bowmer

Likewise we are all indebted to Jill for organising this census. Editor

BLEADON YOUTH CLUB PLAYGROUP

Have you children aged three and above who would benefit from coming among to a local playgroup?

Bleadon Playgroup meets every Monday, Tuesday and Thursday from 9.30a.m. to 12.30p.m. during Term time, in the Youthclub Hall. Playgroup fees are £2.00 per session and give excellent value.

A wide variety of toys and activities are available. Recent trips have included a visit to New Road Farm and a Teddy Bear's Picnic. Visitors to the playgroup have included a Policeman, Dental Nurse and Fireman complete with Fire Engine!

Further details available from playgroup leader - Mrs Cynthia Richardson, telephone 812704.

ONE WOMAN'S FAVOURITE

I have lived in this lovely village for nine years now, and as a dog owner have walked the footpaths in and around Bleadon extensively, but my favourite walk follows the paths leading up to and over Purn Hill.

This is truly a place of outstanding natural beauty, particularly in Spring and early Summer. Unspoilt, and mercifully free from pesticides and herbicides, which is evident from the great variety of wild flowers which grow on the hill, particularly on the southern slopes, where a carpet of Wild Thyme, Yellow Rock Roses, Scabias and Vetch grow in profusion.

There are also many different species of butterfly to be seen such as Orange Tips, the beautiful little Adonis Blue, small Tortoiseshells and Red Admirals, just to name a few. These have been particularly attracted by the Common Ragwort and the Cotton Thistles which have grown in vast quantities this year across the hill and in the surrounding fields, and whilst the butterflies find them attractive they are a real problem for the farmers. The Common Ragwort is poisonous and has to be kept at bay, and once the thistles shed their seeds, they will multiply tenfold.

Purn Hill is also an ideal habitat for Badgers, Foxes, Rabbits, Green Woodpeckers, Long Tailed Tits and Buzzards which can be seen soaring over the fields, in the early evening you may even spot a Little Owl.

From the village this walk can be approached either from the allotment gate following the footpath signs, there are several stiles to negotiate, but my Labrador and my friend's elderly Border Collie manage them, or from the public footpath off Purn Way, at the junction with Bleadon Road.

Whilst a steady climb up the hill, it is well worth the effort for the views alone, however as the Autumn approaches, it is also an excellent place to pick blackberries.

Jill Bowmer

Other residents are invited to describe their favourite walks. Editor

ANOTHER SMALL BUSINESS IN BLEADON

For those who don't know Woody White, he's the one who does the carving down at Purn House Farm. Woody is about to start another line in his business, that of drying and converting timber.

Let me explain a little more. If you have a fallen tree, or a tree that you no longer want, and you feel that it would be worth turning it into useful timber, all you have to do is give Woody a ring on 815374, someone will come along, fell the tree, cut the logs to length and take the logs to Woody's workshop.

There they will be ripped into boards and kiln dried to your requirements. The cost of course will depend on the size of the tree. One disadvantage or maybe advantage is that this procedure produces a lot of waste in the form of firewood.

If there are any needy pensioners who could make use of this firewood, may I suggest that they call in at the workshop and maybe arrangements can be made for collection of delivery as and when the pile builds up.

SEWAGE TREATMENT WORKS - BLEADON LEVEL

The first whiff I experienced of the proposed new sewage plant on Bleadon Level came through the Environmental Services Committee on which I serve. When the local press got hold of the story much of the publicity centred around the series of lagoons which would add to the scenic interest and attract new bird life. However, there is much more to the project than the lagoons.

It is the largest and most expensive scheme (£25 million) that has ever been planned for the parish and it is a major issue for the District of Woodspring. As such it deserves very serious and close scrutiny to assess the impact it will have. Over 60 acres of land seem to be involved and this will contain buildings, storage tanks and various processing plant, as well as the lagoons.

I am sure that all of us approve of the idea of treating sewage efficiently, with minimal health risks and minimal damage to the environment. The new treatment works will, in effect, replace the Black Rock pumping and screening station opposite Weston Cricket Ground, which caters for most of Weston and the surrounding district. It has been explained to me that the new site at Bleadon Level will be advantageous for two main reasons. First, it will not be necessary to chlorinate the effluent being pumped out into Weston Bay, which is the present method of ensuring its safe disposal and which has contributed to Weston obtaining the blue flag; apparently the chlorination is substantial and presents environmental hazards. Second, the standard of effluent being released into the River Axe from the lagoons at Bleadon will be higher than the existing system can deliver; the water flowing into the Axe will be cleaner than the river itself.

Wessex Water is very concerned to minimise the visual impact of the proposed development and to enhance the environment. Banks will be built around the works and a reed marsh will be established next to the lagoons to encourage the wild life.

It would seem from what has been said that although there can be no guarantee that there will be no smell, on the whole this should not cause a problem. The removal of the sludge by the tanker lorries is a potential traffic nuisance but the number of movements is not expected to be significant. A new road will be made at Wayacre Drove but all the bridlepaths are to be retained in their present location.

The disadvantages of the proposal I have set out in my letter to the Chairman of Wessex Water, reprinted below. A pertinent question to ask is simply : would planning permission be given for this development if it were I.C.I. making the application? A series of freshwater lagoons on Bleadon level would be an attractive proposition but for me their association with sewage treatment diminishes their appeal.

I should be pleased to hear any views on this subject which parishioners may have.

Alan Kerr, District Councillor.
Tel 812084

Dear Sirs,

Having long been unhappy with the method of sewage disposal in Weston-Super-Mare I am naturally very pleased to learn of your authority's commitment to new sewage treatment methods in this area. It is encouraging to know that sewage will no longer be pumped out to sea but can be treated in such a way as to become re-usable.

As the local district councillor for Bleadon my enthusiasm for your scheme is matched by my dismay at its proposed location. The site is very familiar to me as I walk regularly in the vicinity, and have done so for many years. As you probably know it is a tranquil and beautiful part of the countryside

affording views to Brean Down, Uphill, the Mendip Hills, Brent Knoll, the Quantocks and many other places. From the hill at Uphill to the river Axe on the seaward side of the railway line is unspoilt, unsullied landscape, apart from the pylons which have long been a feature, and an unauthorised scrap metal site. The fields are used for a variety of crops and also for sheep and cattle grazing.

I honestly believe that Bleadon Level is a unique and precious corner of our rural landscape and must be preserved as it is. You will know that a bridle path runs from Accommodation Road to Uphill Past the proposed site and that Wayacre Drove is also a bridleway. Since the bridle path has been given a signpost it is being used by more people and I am pleased that they can derive pleasure from this scenic area.

However well screened and environmentally sympathetic the sewage plant will be, I am afraid that it will inevitably destroy another piece of our vanishing countryside. This is a very high price to pay in an increasingly over-developed district such as Woodspring.

May I request you please, to consider fully all the options which are available to you for treating sewage in Weston-Super-Mare in the hope that a suitable alternative site or method may be found. I know virtually nothing about the subject but I understand that enclosed treatment works are a possibility and these could be sited in an industrial location. I wonder also if sewage can be pumped back to the new sewer at Locking Castle which will run to the Wick St. Lawrence plant.

I would be very pleased to meet you and your chief engineer at the site to give you an appreciation of what I have expressed and look forward to hearing any comments you may have.

“ALADDIN” AT THE CORONATION HALL

Before your pre-Christmas engagements become too numerous, pencil in the dates December 6th and 7th.

Bleadon Players, following their riotous success with “Cinderella” and John Major’s lead in re-opening a dialogue with China, are staging “Aladdin” on those dates, at Bleadon’s entertainment Mecca, the Coronation Hall. As last year, there will be evening performances on the Friday and Saturday, plus a Saturday matinee.

BLEADON HORTICULTURAL SOCIETY 18TH SUMMER FLOWER SHOW 7TH. SEPTEMBER 1991

The Coronation Hall was a blaze of colour from the many exhibits of flowers, pot plants and flower arrangements. The vegetables were of a very high standard and the many childrens’ exhibits were a delight to the eye. The homecraft section was also well supported and entries overall were the best for four years.

The Annual General Meeting will be held in the Coronation Hall at 7.30 p.m. on Thursday November 21st when we would like to see as many villagers and friends as possible, so that you can voice your opinions as to how the Society and shows in the future should be run. Please try to attend.

C. Cudlipp

SMOKE GETS IN YOUR EYES - THE SECOND PART

Les Masters wrote under the heading, "SMOKE GETS IN YOUR EYES", in the Spring edition of your newsletter (Number 9). Sadly his message did not get through to a few people in our village.

From late July through August and to the date of writing this article, a sunny Summer, in all its glory, has been with us most days. Not surprisingly most of us opened up our windows to let the air pass through our houses, some of us got out our garden chairs to relax on our lawns or Patios. Some hung out their washing at suitable times - what better than natural drying in the sun and air to leave the laundry sweet and clean. Great ideas? Yes for some of the time. The other occasions were spoilt by bonfires, lit in gardens without the slightest consideration of the effects on neighbours and other fellow residents of Bleadon.

I and my near neighbours have suffered the problem from at least three different locations and on several occasions this year. Discussions with other parish councillors and fellow villagers have established that the problem also occurs in other parts of the village.

The result of the fires - Quick!, close all the windows, put away the garden chairs and go indoors or be choked by the appalling smoke blowing across from the guilty party's garden. Take in the laundry before it is so tainted by smoke that it needs to be washed again. Notice how generous they are though; they give all the smoke away, keeping virtually none for themselves. And, of course, just any time of day will do for their bonfire. Judging from some of the smoke some pretty noxious stuff gets burned, not just garden rubbish.

The crux of this matter is that bonfires are unnecessary. We have a civic amenity site off Herluin Way (near the Hutton Moor Sports Centre). It accepts Your garden rubbish and other household waste, free of charge. All You have to do is get it there. The majority of us have access to cars and most car boots will carry a surprising number of polythene sacks of waste. So why not use this facility and avoid bonfires.

For the few who cannot use the above facility and who must have bonfires, please use them at appropriate times, with the least adverse affect on fellow residents. Woodspring Environmental Services do have two useful and informative leaflets available on garden bonfires and the associated environmental issues.

Finally, although it is not an offence as such to light a bonfire in the Woodspring area, you could still fall foul of the law. Allowing smoke from a bonfire to drift across a road is an offence under the Highways (Amendment) Act of 1986. The maximum fine is £2000. Also, under the Clean Air Act 1956, it is an offence to cause a nuisance through the creation of smoke, again a maximum penalty of £2000.

Here's to clean living from now on.

John Ward

BLEADON FRIENDSHIP CLUB

The Friendship Club re-opened on September 13th after the summer break.

Thirty eight members enjoyed a very happy week on holiday in Falmouth. President, Mr.W Stephens was thanked for all his hard work in arranging this.

A coffee morning will be held sometime in September; date to be announced.

New members and visitors are always welcome on Friday afternoons from 2.15 p.m. until 4 o'clock.

E.M.T.

BLEADON FOLK DANCE CLUB

The Folk Dance Club meets on the first and fourth Thursday of the month in the Coronation Hall. New members, both young and not so young will be warmly welcomed.

Please don't be put off by feeling that you don't know how to Folk Dance. We all have a lot of fun learning, and the evenings are greatly enjoyed by all participants.

Why not come along and join in, ask for Jean, Barbara or John. (60p per session).

Jean (Tel 814007)

WHIST DRIVES

In aid of the Scout and Guide New Building Fund, six Whist Drives will be held in the Coronation Hall. These will take place on Wednesday afternoons, from 2.30 to 4.30p.m. on the following dates, 9th October, 16th October, 23rd October, 30th October, 6th November and 13th November.

Each session will cost £1.00 including tea and biscuits. There will also be a raffle.

Please come and enjoy a social afternoon with your friends.

Thankyou.

B. Snelgrove
J. Hobbs

LAMENT FOR LOST LOO ROLLS

I hear there's a problem with nature
Down at the Coronation Hall,
Not the Flora or Fauna type nature
But the one we all know as the Call.

The call we all need to answer
The long and the short and the tall,
But how can folks do this in Bleadon
When the Loo Roll's been pinched off the wall?

Committee detectives are baffled
To the bottom of this they must get,
But where do they possibly start looking
And who would commit such a theft?

Our youth and our local teenagers
Not this time will they take the blame,
For they have already been banned
From ever hiring the hall again.

So is there some adult delinquent,
A recycled teenager maybe
Who is hooked on the softness of Andrex,
And can't help but steal two or three.

Now my solution is really quite easy,
We've had it too soft for too long
It won't even cost us a penny
To discourage these doers of wrong.

So Len and the management committee
Uncross your legs and stay sane
Just shop a little more wisely
And go back to Bronco again.

Sue Strode

BLEADON SHORT MAT BOWLING CLUB

As I write this we are looking forward to the opening of our 1991/92 bowling season. This newsletter will not reach you before the day but the meeting commences at 7.00 p.m. on Friday 20th September. We shall hold our A.G.M. and, for the rest of the evening, we shall get on with the all important bowling.

We shall have room for a few new members this Year. We don't take ourselves too seriously and our club is as much a social group as a collection of bowlers. If any reader is interested in joining us, please come along to the Coronation Hall any Friday evening, at 7 p.m., from the 27th. September onwards. We all have to start sometime, it's not really difficult, and you can be assured of a warm welcome. You'll get a chance to try your hand but - be warned - You could get hooked !

John Ward - Tel. 812136

CORONATION HALL

The interior of the hall has been redecorated and we would be grateful if users would refrain from displaying posters or notices on the walls or pillars, as the use of Blu-Tack or Sellotape is not kind to emulsion paint and spoils the look of the hall. The window curtains have been dry cleaned and new track will be fitted to compliment the overall effect. The next job is the stage curtains. This will be somewhat expensive, as they need some repair and also have to be fireproofed.

We hope to be able to replace some of the older trestle tables with new light weight aluminium framed ones.

FORTHCOMING EVENTS

- Saturday
October 19th** Les Masters is putting on a variety show which promises to be an entertaining evening. Profits are to be shared between the hall and the church.
- Saturday
December 7th** Christmas coffee morning. There will be various stalls where useful presents can be purchased, a bring and buy stall and the usual raffle. By the way anyone wishing to take a stall can do so for £3. For more information ring me on 814517.
- Tuesday
December 31st** NEW YEARS EVE Party and Dance, with buffet supper. A chance to celebrate with family and friends, in the village with no problems about drinking and driving OR booking taxis! More details in the next issue of Newsletter and, nearer the time, by posters in the village.

Please note these dates in your diary now and give your village hall the support it deserves.

Many thanks.

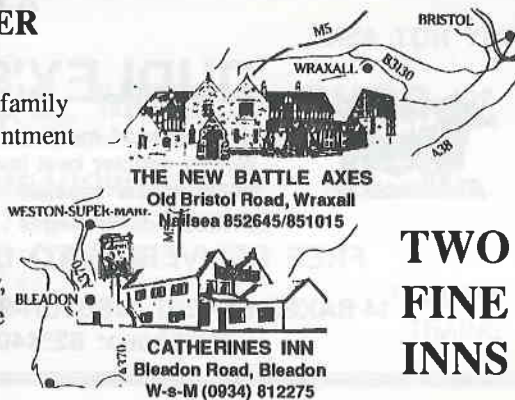
L.J.Chamberlain (Chairman)

OPEN ALL OVER CHRISTMAS

Giorgione's Fayre for all the family
Book early to avoid disappointment

*Eat, Drink and be
Merry!*

When it comes to hospitality,
no-one does it better than the
Giorgione family.



**TWO
FINE
INNS**

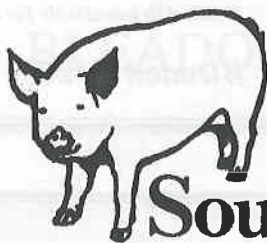
These two busy, successful inns provide good companionship, a wonderful range of real ales, lagers, wines and spirits and the most generous Carvery food.....

Mouthwatering slices from perfect roasts, freshly prepared vegetables, steaks grilled to your liking, fish and poultry and a selection of continental dishes.

Highly recommended and very good value.

Experience it for yourself and discover why these two Fine Inns are well worth finding!

THE GIORGIONE GROUP



Bacon South West

THE BRISTOL BASED BACON SLICER

it's the **B**est it's **S**elected it's a **W**inner

0272 827786

WE WELCOME ALL ENQUIRIES

WHY NOT ASK



DUDLEY'S

TO CALL?

Home cooked meats
Weekly counter best buys
Home freezer specials
Home made sausages

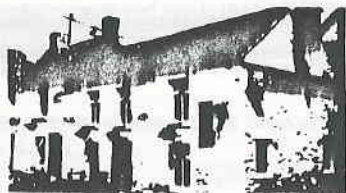
FREE DELIVERIES TO BLEADON

14 BAKER STREET WESTON-SUPER-MARE

Telephone: 625440

The Queens Arms

Bleadon Village, Nr. Weston-super-Mare



*Good Beer & G
ood Value Bar Meals and Snacks
Parties Catered for
Skittle Alley available for Functions*

Bleadon 812080

BRIDGE GARAGE

(Prop: Peter Briffitt)

BLEADON VILLAGE

AT YOUR SERVICE

TELEPHONE 0934 - 812206

PHONE: (0934) 620106

TRAPNELL'S MODEL SHOP

**82 MEADOW STREET
WESTON-SUPER-MARE
AVON**

RADIO CONTROL
SPECIALIST

HORNBY
TRAINS

IAN DANCE

Plumbing & Heating Contractor
Corgi Registered Installer

BLEADON 813686

Glenise and Les Masters

BLEADON POST OFFICE

*Newsagents * Off Licence * Groceries * Bread * Milk*

*Toys * Hardware * Wool * Haberdashery*

*Cigarettes * Confectionery * Greetings Cards * Stationery*

Tel: 812200

PURN HOUSE FARM WORKSHOPS

Purn Way, Bleadon, Weston-super-Mare

- | | | |
|---------------|---|---------------------------|
| UNIT 1 | J. B's WOODCRAFT | Tel: 0934 - 812001 |
| | Purpose made, made to measure Furniture, Joinery & Carpentry | |
| UNIT 2 | WOODY WHITE | Tel: 0934 - 815374 |
| | Fairground Woodcarver & Wood Converting Service | |
| UNIT 3 | G. W. MASON | Tel: 0934 - 815379 |
| | Manufacturers, Restorers and Fitters
Cornices, Ceiling Roses, Archways, Niches | |

Edited by Les Masters, Bleadon Post Office

Published by Bleadon Parish Council, Bleadon, Avon.

Unless otherwise stated, the opinions and comments expressed in this newsletter are those of the contributor and not Bleadon Parish Council.

The Parish Council is greatly indebted to Glo Smith and John Ward for the production of this Newsletter.

Kingston Kerb & Paving

B.S. & non-Standard Kerbs
B.S. Channels & Edgings
B.S. & non-Standard Paving



Bridge Road
Bleadon

Telephone: 0934 812358

DECORATIVE PAVING SLABS

BAGGED SAND AND

AGGREGATES

CONCRETE BLOCKS



CARPENTER & JOINER

WINDOWS - DOORS - PRCHES - SECURITY LOCKS
UPVC FACIA BOARDS - CLADDING & GUTTERING
FENCING - REPLACEMENT FITTED KITCHENS

ALL WORK GUARANTEED
24 HOUR EMERGENCY SERVICE

Mike Whittaker

W-s-M 415945



Prolectric



Services

Electrical Contractors

**24 HR EMERGENCY
CALL OUT**

- * Fire Protection Specialists
- * Design Installation & Maintenance
- * Servicing & Testing of Fire Alarm
Nurse Call & Emergency Lighting
- * General Electrical Repairs & Maintenance
- * Free Quotations upon Request

56 Moorland Road

Weston-s-Mare

Tel: (0934) 636134

Mitch's Cleaning Service

WINDOW CLEANERS * HOME CLEANING SERVICE
REGULAR SERVICE TO BLEADON



TEL: (0934) 636557 (0934) 26338

39 ADDICOTT ROAD WESTON-SUPER-MARE
AVON BS23 3PY