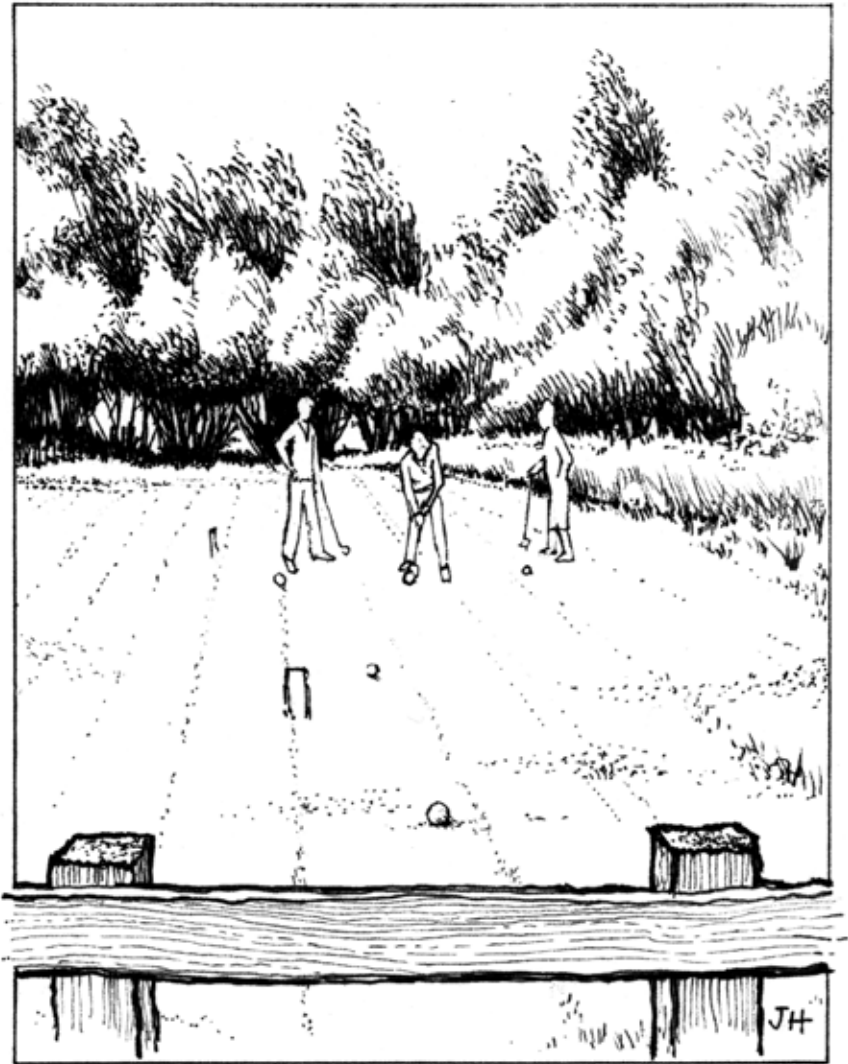


BLEADON



VILLAGE NEWS 78

Monthly indoor

Saturday MARKET

18th October, 15th November
6th December - Christmas Market
and Fayre

Bleadon Village Coronation Hall 9-12.30



Local produce.

Somerset beef and lamb.

Local bread. Fairtrade.

Home-made cakes.

Cheeses. Cider. Honey.

Preserves. Plants. Books.

Crafts. Jewellery. Gifts.

Cards. Bric-a-brac.

Please bring a bag



THE PARISH COUNCIL

| | | |
|--------------------------------|--|-------------|
| PENNY SKELLEY [CHAIRMAN] | 'MENDIP CROFT', CELTIC WAY, BLEADON. | TEL. 815331 |
| PENNY ROBINSON [VICE CHAIRMAN] | 1, THE VEALE, BLEADON. | TEL. 814142 |
| GRAHAM LOCKYER | 'HIGHCROFT', ROMAN ROAD, BLEADON. | TEL. 812050 |
| MARY SHEPPARD | 'LITTLEWOOD' BRIDGWATER RD., LYMPSHAM. | TEL. 812921 |
| KEITH PYKE | 8, WHITEGATE CLOSE, BLEADON. | TEL. 813127 |
| CLIVE MORRIS | 20, BLEADON MILL, BLEADON. | TEL. 811591 |
| ROBERT HOUSE | PURN VILLA, PURN HOUSE FARM, BLEADON. | TEL. 815588 |
| BRIAN GAMBLE | 'ASHDENE', BLEADON ROAD, BLEADON. | TEL. 811709 |

The Council meets on the 2nd Monday of the month at 7.30pm, in the Coronation Hall.

An agenda is published on the Parish notice board, and any Parishioner who wishes to, may attend these meetings. If there is a particular issue you would like to raise, could you please let the Parish Clerk know in advance and at the latest by the Friday immediately preceding the meeting. This will give him the chance to collect the most up to date information available.

THE PARISH CLERK TO WHOM ALL CORRESPONDENCE SHOULD BE ADDRESSED IS:-

BRUCE POOLE, 'THE CHIPPINGS', 21 STONELEIGH CLOSE,
BURNHAM-ON-SEA, SOMERSET TA8 3EE
TEL. 07887 802922 or e-mail: bruce.poole2@btopenworld.com

**This Village Newsletter is published four times a year, March, June, September and December. Date sensitive material and publicity notices should reach the Editor well in advance of the event as a definite publishing date cannot be guaranteed.
The Deadline for the next issue is 22nd November 2008**

Our aim is to provide a copy of this magazine free to every household within the Parish of Bleadon. Those who live outside the Parish may be able to obtain a copy from the Village shop or the Church porch. I should like to thank all those who help with the distribution of the magazine and I hope I can count on your future support. If there are others out there who would like to help please let me know (01934 814142).

Unless otherwise stated the opinions and comments expressed in this magazine are those of the contributor and not of Bleadon Parish Council. Anyone who has a comment to make on the content of this publication or has a contribution for inclusion, should send it to :-

Mrs. Penny Robinson, 1, The Veale, Bleadon. BS24 0NP
Tel. 01934 814142 | e-mail : penny.rob@btopenworld.com

Keep up to date with the Parish Council news and to see this magazine online go to...

www.bleadonparishcouncil.gov.uk

Chairman's Report



"Notes from a Small Village."

While writing these summer notes, the sky is dark with rain and there is a chill in the air, but Bleadon is in good spirits. As you will know the Parish Council is committed to the Village Plan and this will be published in the autumn. The draft plan is now written and the aim is that this will be considered by the Steering Group and presented to the Parish Council as soon as possible. Much of the plan, I'm glad to say, has followed the wishes expressed by villagers in the past and some objectives have already been implemented.

A new slide complex has been installed in the Play Park, which is a great bonus to our safe and much enjoyed children's play area. Perhaps later there will be something for Grannies and Grandpas to play on! The Croquet Club has been launched and many villagers have taken up mallets to engage in this gentle pastime.

Dial-a-Ride, now Weston Community Transport, has extended its area of operation and it is a valued asset to many in Bleadon. Also, in spite of setbacks, we still have the Mobile Library visiting fortnightly; please make good use of this facility.

Notices for the autumn work on the A370, at the junctions of Bleadon Road and Accommodation Road, have been posted and, at last, the safety of this crossroad will be improved.

Next year, we must again reapply for Quality Status. As you will remember, we were one of the first Parish Councils to achieve this accolade. The Council feels sure that we will be able to meet the higher standards and criteria for 2009, as we have many credits to our name.

Within this magazine you will be able to read further details of the work of the Parish Council. Please, please, help to keep our much loved village tidy; our environment is vital to us all.

Penny Skelley Chairman.

Neighbourhood Watch Scheme



Bleadon is more than 50% covered by the Neighbourhood Watch Scheme. We want to make it 100%. To fulfil that objective we need some more Neighbourhood Watch Coordinators who will cover typically 2 to a maximum of 30 houses in a relatively small area.

Coordinators receive quarterly newsletters to deliver to the residents in their scheme. They also need to find a deputy that lives nearby to take over during holidays or illness.

If you would like to be a Coordinator for your area please contact me on 01934 638123 or come to the beat surgery on a Tuesday in the Church Rooms between 2pm and 4pm.

PCSO 9279 Emma Wright

Police Headquarters for the Parish Council

During July a number of Parish Councillors had the opportunity to join some other councillors from the area for an evening visit to Police Headquarters at Portishead.

The excellent if somewhat cautious travelling arrangements made by the Parish Clerk saw us arrive in plenty of time for the welcoming tea and biscuits. This was followed by a short presentation, before a real eye opener for every one present. The hosts had arranged for an on duty armed response unit to make a presentation. As they were on duty they could have been called away at a moments notice. Fortunately for us and probably their customers their presentation was not interrupted.

The armed response unit demonstrated their various firearms and other weapons, unloaded of course and a staggering range of equipment that they carry with them at all times. A full array of personal protection for various different types of weapons was shown. Sometimes situations require more than one protective jacket, with some definitely not lightweight. Some of the visitors would have struggled to walk let alone run had they been fully equipped for action. Fortunately these officers are very fit and undergo regular routine tests of mind and body to ensure the very best outcome in testing situations.

A powerful estate car is standard issue for the armed response teams, not only to get them to the scene of any incident quickly but also to carry their equipment which, as well as the equipment above, also includes a comprehensive collection of emergency medical equipment.

Back in the communications hall the councillors were given a very professional presentation, sprinkled with police officer humour. This was followed by a tour of the control rooms. The first visited was extremely well equipped and manages every incident in the area with senior officers having to make deployment decisions, always within the restrictions of a finite number of officers being available. The calmness and speed with which they tackled their tasks was impressive.

The other control rooms deal with 999 emergency and 0845 routine enquiry calls. The professional approach of the officers was evident by their calm conduct when dealing with members of the public who may well be distressed or confused.

The Police Headquarters which only handles police calls for the Somerset area still receives close to 5000 calls a day. Whilst a significant percentage of calls are on the traditional 999 emergency number, many more are on the 0845 enquiry number. We heard that unfortunately there are still a few misguided people who call 999 for frivolous or inappropriate reasons.

The visit gave an excellent insight into where a significant amount of taxpayer's money is spent.

Graham Lockyer

Bleadon Coronation Hall

Tel. 01934 814517 | Reg. Charity No. 104602



August when most organisations are having their summer break, gives us the opportunity to do various tasks that would be difficult when the Halls are in daily use. We have been carrying out an inventory of kitchen equipment, checking cutlery, china etc. to ensure that numbers are adequate for Hall users.

Replacement UPVC windows have been fitted in the kitchen and in the main Hall the fabric covered chairs have been steam cleaned and now look as good as new.

A valiant band of volunteers spent a full day decorating the Jubilee Room and they did a super job even if some of them did end up with more paint on themselves than on the walls! It all looks really clean and bright so thanks to all of them for giving up their time.

The Saturday markets continue to thrive and have become a valuable source of revenue, enabling us to carry out many of the necessary refurbishments outlined above.

Len Chamberlain

Chairman



Bleadon Players



Our autumn production is a psychological thriller entitled

"The House by the Lake"

It will be performed in the Coronation Hall
on Thursday 2nd , Friday 3rd
and Saturday 4th October at 7.30pm.
Tickets from BleadonPost Office or on the door.

Come – if you dare – and witness
the Players in sinister mood.



We continue our "church activities" despite the absence of a regular Priest. In the March issue of this magazine we set out reasons for the difficulty in filling the vacancy left by the retirement of our last Rector. The P.C.C. at its latest meeting authorised a letter be sent to the Archdeacon of Bath (who has a special responsibility for overseeing the new appointment) requesting a speedy resolution in making a clerical appointment to our parish. A reply has now been received which sadly indicates that the diocese "is not optimistic about a speedy resolution of the current issues" The current position is that all parties in the Diocese, who are involved in the appointment of a new priest, support our wish that the Rev'd Bethan Gutteridge be appointed priest at Bleadon. Our patrons, the Guild of All Souls, disagree and as patrons they are able, by withholding their approval, to significantly delay the whole process of appointment. To put it mildly this lack of resolution is exasperating; however the P.C.C. will continue its efforts (now extending well over many months of endeavour) to bring the impasse to a successful conclusion.

In the parish we have during the last twelve months lost several stalwart members of our congregation including John Thomlinson, Jack Sommerville, and Lawson Clare. Sadly in August, Warren Storey, our Reader for many years, died during a holiday in France. He will be remembered for his many services to the Church including the use of his special talent as an exceptionally gifted artist. Villagers may recall his project during our 700th anniversary celebrations, of undertaking oil based portraits of several members of our community.

Forthcoming Church Services.

Several important services are due to be held in the next three months; herewith details:

- (a) Sunday, 28th September, at 10.15.a.m. our Harvest Festival;
- (b) Sunday 9th November, at 10.15.a.m. Remembrance Sunday with the Bishop of Taunton joining us.
- (c) Sunday, 30th November, Advent Carol Service at 6.30.p.m.
- (d) Sunday, 14th December, the Christingle Service and Tea at 3.3.0pm.
- (e) Sunday, 21st December the ever-popular service of Nine Lessons and Carols at 10.15.a.m. (please note the morning timing which has proved quite popular);
- (f) Wednesday, 24th December, Crib Service at 5pm. And our Midnight Mass of Christmas at 11.30.p.m.
- (g) Thursday, 25th December, Carols and Christmas Day Eucharist at 10.15.a.m.

So, we reassure all our readers that the Church remains active and devoted in maintaining the tradition of service to this community now extending over the last 700 years. We extend our best wishes to you and your families as the festive season approaches.

David Elliot - Chairman of the PCC

CONTACTUS

Yet another annual Cheese and Wine Welcome party was enjoyed in June by 35 newcomers to the village. As always the atmosphere was very relaxed and friendly and guests had the opportunity to meet representatives of village clubs and organisations.

I can hardly believe that it is 23 years since we launched Contactus with others — sadly no longer with us — which suggests it is probably time that Philip and I retired as gracefully as our walking sticks allow. It was suggested that first we recalled some of the history of Contactus for the Village News. Now we'll confidently leave the welcoming to the younger committee members who project the lively, vibrant atmosphere of a friendly village buzzing with activities. Even the Welcome Pack itself is to have a new look with the cover depicting an overall view of the centre of Bleadon.

In 1988 we thought we'd enter the Contactus scheme into the Avon Village Venture competition sponsored by Shell BP.UK.Ltd. After several visits, interviews and form filling we came fourth out of 38 entrants, winning £100 for funds, a framed photo of our meeting with the panel of judges and a framed Award Certificate of Merit which hung in the Coronation Hall with other village certificates, until regrettably it disappeared after a private party. With John Thomlinson at the helm we held barn dances with supper annually to raise money for the welcome parties and charity. Over the years, with the profit we were also able to contribute to various projects including restoring the church clock, building the Jubilee hall, improving the playground, make donations to Weston Hospicecare and to a guide representing the Scout and Guide Movement at the World Jamboree in Chile. We tried holding lunches for elderly or lonely people, but perhaps not surprisingly here we didn't have enough acceptances to make it viable! John's idea of introducing Guides to elderly housebound people just for chats was however, welcomed. A public meeting to set up Neighbourhood Watch was a success and is still working well. Babysitting, Grannysitting, shopping and giving lifts was done voluntarily but where, in cases of long term hospitalisation, regular lifts were arranged on a rota we were able to offer contributions towards petrol. We took on the task of counting every dwelling for parish records, and delivered the church Christmas cards. We hoped to find a person in each road who would be responsible for letting our committee know quickly of new arrivals. That proved to be very difficult to maintain but is still something we would like to achieve. We rely very much on people letting us know when they expect new neighbours. We are sure they will be given a personal friendly welcome but we like to give them the Welcome Pack and note their names for their invitations to the next Welcome Party. One of the nicest responses we received was "You are the very first to ring our new doorbell and we already feel that we are going to be happy and welcome here".

Now, with the backing and support of the Parish Council and the dedicated committee we are certain that Contactus will continue to thrive. Philip and I are proud to have been part of it for so many happy years.

Mary Ashley

Bleadon Friendship Club



The Friendship Club has again had a varied and constructive Annual break, and we now look forward to the next four months with anticipation.

In May the eight members who holidayed on the Isle of White by invitation, from Hutton Friendship club had a truly great time and were blessed with the best week of the summer so far, and I having returned from my pilgrimage to Libya a few days before was delighted to find myself in even warmer temperatures. We hope we may receive a similar invitation at some future date and our thanks to the club members for welcoming us.

As we meet, following our Annual Break, we will resume our recently acquired Friday 'pickup-get you home' service; the min-bus picks up members on route from Oldmixon Rd, Bleadon Hill, Willow Drive and The Veale, dropping members at the Coronation Hall and proceeding to Lymsham to pick up a further 5 members. This starts at 1.00pm and the transport calls back to pick us up at 4pm.

We are indebted to Weston District Community Transport Group (WDCTG) and Volunteer drivers for helping us with this project.



Bleadon Friendship Club are sponsoring a Cup in a novelty class at the 69th Bleadon Country Sports Charity Show in the (wait for it) VETERAN Dog (over 7yrs) we feel we have an affinity with this!

September 12th Reflections
19th Harvest Auction
26th Pauline Kinder-Secret World

October 3rd Mike and his Music
10th Charlotte Conway from RNLI
17th Bingo
24th Quiz
31st Victorian Pastimes and Pleasures

November 7th Beetle
8th Coffee Morning

November 14th Play from Wayfarers
21st Quiz
28th Isabel Cummings
Yatton Ladies Choir

December 5th Mike and his Music
12th Film from Graham Wiltshire
Pat Haze
19th Bingo and Mince Pies

Close for Christmas

Club re-opens January 9th 2009

Bleadon Folk Dance Club



The club meets on the 3rd Thursday of every month, at 7.30pm in the Coronation Hall. 8pm –10pm.

Various callers.

Dancers and non-dancers welcome of any age.

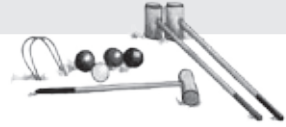
Light refreshments are available.

Annual subscription is £2.00 and £1.50 per evening session.

Last year we very nearly closed because of low numbers but we celebrated 25years on September 18th, however we still need your help to keep the club alive.

Jean Thorne 814007

Weston Croquet Club



On July 1st 2008, the Weston-super-Mare Croquet Club moved to their new home in Bleadon. At first the members played amongst themselves to iron out any difficulties which may have occurred.

We invited people from the village and surrounds to join us in a series of 'teach-in' days, and a large number turned up to 'give it a go.' We are delighted to report that the majority of those who attended those sessions have now joined the Club and are enjoying playing a form of the game known as Golf Croquet.

Other new members wished to be taught the original game of Association Croquet and are now taking lessons from our more experienced players.

If anyone would like to try this new game, which has come to Bleadon, please speak to Roger Buckley 01934 815345



Bleadon Short Mat Bowling Club

Indoor Bowling at the Jubilee Hall has a season from September to May and the 2008/2009 season commences on the 16th September.

At the Annual General Meeting in May the following officials were appointed:-

| | |
|---------------------------------|-------------|
| Graham Rogers – Chairman. | Tel. 811571 |
| Mrs. Glenys Bonham – Secretary. | Tel 811630 |
| Mrs. Joyce Tiney – Treasurer. | Tel 813893 |

The Bowls Club has a predominately social atmosphere and meets on a Friday evening and on Sunday and Tuesday afternoons. New members are always welcome, experienced or not and guidance and help is always available. All you need to start is a pair of light flat shoes.

Last season we did well with our team in the Woodspring League finishing a creditable 5th and it is our intention to compete in the league again this year. Two of our members Linda & Harvey Jane entered and were winners of the County pairs "Plate" competition.

During the summer break successful social activity has continued with a BBQ at Worlebury Golf Club and a barge trip with meal from Bath to Bradford on Avon. We have also played outdoor bowls at Clarence Park Bowling Club each week.

Plans for the future will include our annual Christmas Meal at Worlebury Golf Club and a short break holiday (Sunday to Friday) at Dawlish in February.



In June we welcomed Dave Wallace who entertained us with a talk entitled 'Steeppholm and the Shirkers'. This proved to be really fascinating and included many points of interest, especially the strategic role that the island played during the 2nd World War. The Shirkers are a group of volunteers who work all day - or just for a few hours when they shirk the rest!

Dave also mentioned the rich and varied natural history, including migrant butterflies and birds as well as the plants that are to be found there. He also covered the ancient history being discovered there in an archaeological dig at the site of an old Priory.

On a sunny morning in July a coach full of intrepid travellers set out for Carmarthenshire and the National Botanic Garden of Wales. The weather was generally kind to us with only a few light showers to dampen the enthusiasm, as we made our way up to the magnificent dome, which houses plant species from around the world in wonderfully natural settings. There were many other areas of great interest including a superb double walled garden, an apothecary's garden full of culinary and medicinal herbs, a scree garden, and lakes, ponds and fountains to please the eye. The tropical glasshouse with its occasional spray of water to keep the humidity high was of real interest, exotic plant species abound there in profusion. There was a 'state of the art' theatre in the round and some of us enjoyed a short presentation about the planet of plants; it was good to take the weight of the feet for a while! In another part of the garden a camera focused on the entrance of a beehive in the apiary gave us all a great view of the activity, from the safety of the bee house.

Our progress was aided by the use of a free land train around the whole area, a blessing for all. (see photo).



There was so much to see and for anyone who is interested I can thoroughly recommend a visit. Go to www.gardenofwales.org.uk to see more details. Our thanks to Maggie and Tony Pettit for organizing the usual raffle which made the journey home that much more bearable!

Dates for your diary.

- Tuesday October 21st - Mark Walker will give an illustrated talk "RHS gardens for Charity"
- Tuesday November 18th – Paul Gilmore makes his usual visit with "Preparing for Christmas".
- Tuesday December 16th – Beetle drive and American-style supper (tickets essential for this one).

All our meetings are held in the Coronation Hall at 7.30pm and are open to all for just £1 admission.

Chris Cudlipp

Warren Storey R.W.A. 1924 - 2008

After the Memorial Service for Warren Storey on August 23rd I was delighted to meet four fellow students who had been at Weston Art School with me over fifty years ago. Warren was an enthusiastic and dedicated young teacher responsible for the study of painting and drawing, which included figurative composition, life drawing and still life. We were working towards the Intermediate Examination in Art, a two-year Foundation course. I later discovered that one of us, not me, received the highest marks in the country for that year. An indication of the quality of Warren's teaching.

In reminiscing, we found that two of us had trained as Art Teachers and two others had become Graphic Designers. We all agreed that we had received an excellent grounding in the principles of drawing, with an emphasis on the importance of looking intensely and drawing searchingly. Apart from the considerable legacy of his own work as a painter, it is surely a fitting tribute to Warren's memory to consider the influence he has had on succeeding generations over so many years. Many of them certainly will feel grateful as I do that their lives have been greatly enriched by his example.

Lorna Hickley.

Poppy Appeal

The Royal British Legion provides financial, social and emotional support to millions who have served and are currently serving in the Armed Forces, and their dependants. Currently, nearly 10.5 million people are eligible for our support and we receive thousands of calls for help every year.



The Legion was founded in 1921 as a voice for the ex-Service community and over 380,000 members continue to ensure that this voice does not go unheard. Although the needs of ex-Service people have changed over the years, we are still there to safeguard their welfare, interests and memory. British service people are in action around the world every day of the year. They know that if they need our support – now or in the future - the Legion is always on active duty for them.

It's possible that these days most of us will know someone who is serving abroad either in Iraq or in Afghanistan.

Give generously when the Poppy Appeal starts this year, there will be the usual door-to-door collection, but in case you are out when we call you will be able to buy your poppy from the shop, or the local pubs. Let's make this year's collection a record one.

Local coordinator is Les Masters 811976.



Hillside – top of Celtic Way



Village Children building a bonfire at The Veale



Shiplate Court Farm



Flat Roof Farm



Bleadon Church and Post Office



Rockville Meet



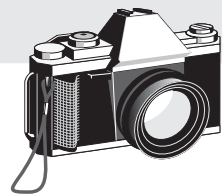
Boys from the Veale damming rain from Wanderstone



Bleadon Pond

The additional cost of reproducing these photos has been met by the generous sponsorship from Marshall's Quarry

A Bright Spark

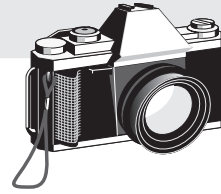


Using flash in photography is one of the least understood facilities available to most amateur camera users. It is used when its effects are non-existent or not used when it could improve an image beyond recognition. Most modern cameras are equipped with a "built-in" or "pop-up" flash and these are the ones which are so misused and misunderstood. For a start they are only fully effective over a distance of about 2 to 3 meters, so when you see a flash going off from the back of the seating of sports meetings like the recent Wimbledon tennis, you can put folding money on the fact that it will have no effect on the ultimate photograph and will only go to shorten the power in the batteries. For those of you who studied physics at school you may remember being taught the "Law of inverse square", where it is stated that "If a subject is illuminated by a point light source, the intensity of illumination at the subject is inversely proportional to the square of the distance". In other words, the further away the subject, the less effective the light source. Secondly, flash tends to be a very hard light as it is almost a point light source, hence the unsightly shadows created when the subject is too close to the background. The best use of flash is when it can be controlled and is used "off camera" or when it is bounced, i.e. off the ceiling or wall in order to soften the effective light. Neither of which can be done with built-in flash and can only be achieved with the right equipment. So what can be done in order to improve the images using "built-in" flash?

1. Don't use it to try to add light to subjects beyond say 3 meters away unless the manufacturer says otherwise. This will depend on the power of the discharge tube.
2. When taking close-ups and portraits using flash, keep the subject well away from the background.
3. On sunny days, try to keep your portrait subject looking away from the sun or to one side, and use flash to put light back into the shadows and a sparkle in the subjects' eyes. This technique is known as "syncro sunlight".

Let's consider how the use of flash all began. Early photographers had a need for artificial illumination because of the exceedingly long exposures needed to create an image using sensitive material which was, by its very nature, very slow in responding to light. Someone came up with the idea of burning pyrogenic compounds in order to produce a very bright light over a short duration. So in 1880 came the first use of Magnesium powder which provided the required light if with a lot of smoke. From this developed magnesium ribbon and the exposure was determined by the length of the ribbon. Both these methods were used up until the 1940's. I myself as a young professional photographer have used them. The ribbon method gave a very bright, soft light since the burning point of the ribbon was moving and was an ideal light source for interior architectural subjects. I can remember an instance using flash powder, which is etched into my memory. I was a young trainee working for a Fleet Street photographic agency when we received a commission to photograph the world renowned concert pianist Benno Moiseiwitsch. I went as assistant to our chief photographer, this was 1944. The venue was the Savoy Hotel. We duly arrived to be shown to the maestro's suite where was sited a magnificent concert grand piano. Moiseiwitsch arrived immaculately attired in white tie and tails. The session began after I had set up the camera and tripod and handed the flash gun to my mentor who proceeded to measure off a quantity of powder (the exposure was determined by the length of time of the burn), and placed it in the tray of the flash gun. He wound the spring which, when released, would provide the spark to ignite the powder. Then he posed Moiseiwitsch, asked him to hold the pose, uncapped the lens (there was no shutter on this camera), and fired the gun. There was a blinding flash and you could not see across

A Bright Spark



the room for smoke. When it cleared Mr.M was in the same position but now covered from head to toe in a fine white dust rather like talcum powder. The piano had likewise, changed it's colour from a highly polished mellow rosewood to a matt white. His face changed from a pleasant smiling, posed expression to one of sheer anger and he raved at my boss in Anglo- Russian and then made him dust down the piano and brush him down until not a speck remained. The resulting picture was superb and was published widely, but I am still unable to wipe the smile off my face. Oh! And by the way he did have the grace to say how much he liked the final photograph.

After this time, flash bulbs were introduced and the earlier methods of producing light were superseded by the "Sashabulb". This was an object like an ordinary light bulb and the same size but filled with a crumpled Magnesium Aluminium foil. These lasted for a short time until first the filament was changed to a wire of the same pyrogenic compounds, and then a miniature version of the same, but now only 3cms high.

Finally electronic flash for the amateur photographer came along in the 1970's with flash durations in micro seconds and flash bulbs disappeared. When electronic flash first came onto the market it was for professional photographers only because of it's weight and cost. It came using rechargeable accumulators weighing approximately 2kgs each and there were usually two in a unit. The accumulators had a very short useable charge life and needed recharging after about 20-30 flashes, they produced an exceedingly high power which in itself was dangerous. Coupled with this, the flash head was mounted with a large reflector to one side of the camera. All this made the kit very heavy and cumbersome and this was as recent as the 1950's, now of course the equipment is much smaller and lighter, due mainly to the introduction of micro circuitry and mass production and is accommodated in just about all cameras made for the amateur market at realistic prices, but it still requires the same principles to enable flash to be used effectively.

Ken Tapley.

Bleadon Photographic Group.

Bleadon Historical Society



An evening meeting will take place on Saturday 15th November at 7.30pm in the Coronation Hall. As usual we hope as many of you with memories to share will turn up and give support to this new village society. More details will be posted on the notice boards as they become available

Please feel free to bring along any items of interest especially photos and newspaper cuttings of Bleadon during the '30s, '40s and '50s.

If you can't attend, but have something useful to contribute, or if there is anyone who feels that they would like to become more involved with the society please ring

Penny Robinson 01934 814142

e-mail:- penny@bleadonvillage.co.uk

A Stilltown Massacre - a short story

It's the evening lull, the period between the end of 'happy hour' and the pre-theatre crush. I use the time to tidy up and restock and as Stan is often my only customer by then, he regularly traps me. In his late fifties, plump, balding with a compensating wispy beard he'll remain beached at the bar until it gets busy before drifting away home. He lives locally and has recently separated from his wife.

"Got like livin' with a Nun," he'd confided, "None of this, none of that."

But Stan's real problem is that he's a dream teller. 'Funny old dream I had last night', he'll say and then follow through by recounting it in all its excruciatingly weird detail. After a brief greeting the regulars have learnt to avoid eye contact with him and move away to talk separately of their football and darts, their business and families. The passing trade and visitors often listen politely a while before carrying their pints away from the bar; leaving the continuing story to the next in line. Lately, since his domestic break-up, the unlikely plots of late night films are beginning to feature. During the 'nun's' regime lusty late night movies were obviously forbidden.

"Good film on last night."

Gloomily I slide a refill across the bar. "You'll go round the twist watching that rubbish Stan. No wonder you get nightmares."

"No. This one was ace. Wish I'd taped it," carefully counting his change back into his purse.

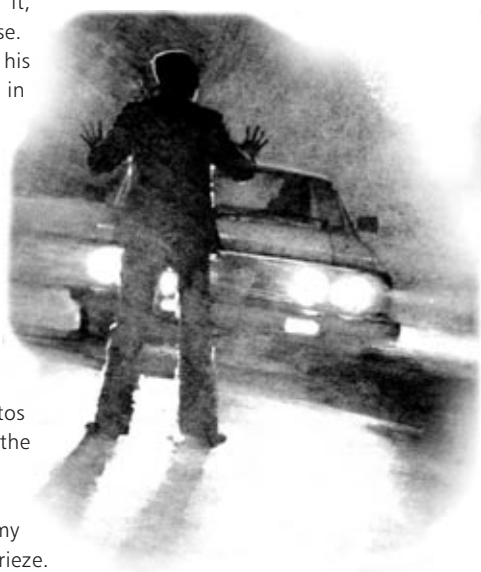
My only other customer eases back his barstool, "Seeya George," he mouths quietly in passing.

"There's this young guy see," Stan begins, "driving this car. Normal looking sort of bloke but he's obviously on a long trip 'cos he keeps taking these pills and that, trying to keep awake. It's getting dark, he's short on petrol too and has to leave the motorway to look for a garage. He comes to a town, it's all very quiet but when he does see anyone they're sort of fixed. Stopped in motion. No movement at all. Frozen like – like those photos you used to see outside the cinema advertising the films. Stills they were called, remember?"

"'Fore my time Stan I'm afraid."

From the corner of my eye I see a couple of my regulars peering in above the leaded window frieze. One gives me the thumbs down and both move on. This bugger Stan's costing me money.

"Anyway," he goes on, "the guy's pretty amazed at all this and not looking where he's going he knocks someone down, gets out the car and there's this body lying on the road. Only it's not really a body but a dressed up tailors dummy sort of thing with bits all broken off where he's hit it. Well he panics now and runs over into a café but it's the same in there, still, dummy people, all looking at him. But he notices that when he takes his eyes off them then looks back again, they've moved, sort of jerked into other positions. Backing away from him mostly, getting out of his way. He goes



A Stilltown Massacre - a short story

up close to one and they seem to be made out of plaster or something. Not moving whilst he's watching but as soon as his backs turned he knows they do. He runs back into the street, there's an ambulance there now blue lights flashing, and a group of still figures are gathered round the front of his car all staring at him. He climbs in the car to drive away but he must have left the engine running because it's now out of petrol..."

The phone rings a welcome interruption and I move away to answer.

"Stan still with you?" Asks a familiar voice.

"Yes, sorry - we're on the last reel though."

Stan is still in full flow, ..."He gets out the car runs up a side street and goes into a house. Inside the house there's a bloke and his wife and kids, all seized up like before but the man's got a cricket bat in his hands and every time our guy takes his eyes off him to watch what the others are doing the man's getting closer and raising the bat to clout him. Well he goes berserk at this, snatches the bat away and smashes the man to pieces..."

Stan's reliving the action now, waving his arms wildly and I drag his glass from harms way.

"...then he goes round the house and smashes up the rest of the family. He ends up in the bathroom and catching sight of himself in the mirror sees he's all covered in blood. Looking around he discovers that the dummy people aren't dummies any more but real people and he's killed 'em.

Police all come rushing in then and grab him."

Suddenly the bar door opens and a party of theatregoers file in, making their way towards a corner table like a line of life-saving cavalry. Stan finishes his drink; he seems tired.

"You on your way then Stan?" Reaching to retrieve his glass.

He looks up frowning. "It's the drugs."

"You what?"

"The drugs. The guy was taking drugs to keep himself awake and they affected him. Makes everything he sees slow down and stop, like he was lookin' at photographs."

"Ah, I get the picture," trying to inject a morsel of humour as one of my rescuers approaches to order.

"That's the trouble you can't get it," says Stan mournfully, "tried all day, 'snot on video. Wish I'd taped it. Could have lent it you then."

Over the next week or so Stan's visits become less frequent until they stop altogether.

"Stan been in lately George?"

"Not seen him for weeks."

"They say he's been going down that pub in Baker Street were the 'Goths' hang out. Into the black gear now, dyed his beard and wearin' a ponytail. Pouring back the ale like 'is feet on fire."

"He'll have to stand his round down there with that lot, " I observe.

There's a moments silence while we consider the likelihood of this.

"See the Seagulls got stuffed again Saturday."

"Wadyou expect? New Manager's bloody useless. Now, what he oughta be doing"

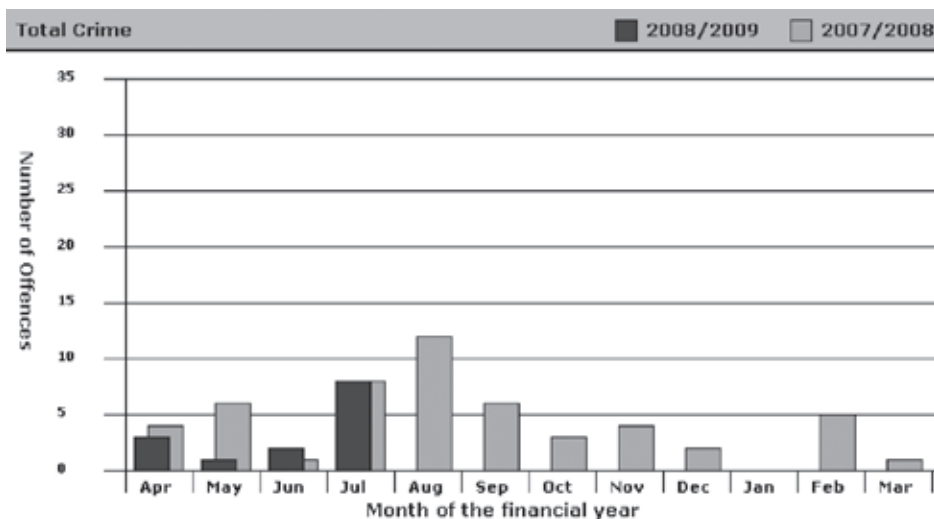
End

Bleadon Police Report



Greetings from the Constabulary,

The below is a chart from the 'Avon and Somerset Police' 'web site' where it also gives a break down of what type of crimes are being committed. You can also find links to our crime reduction pages. Have a read there's some good advice that will help towards stopping you making an appearance in the chart yourself.



The chart shows 14 crimes with another 4 for August so we're well below last years figures it would be nice to keep it that way.

One way all parishioners can help is to report things to the Police when they happen. A good example of this happened on 28th August at about 4am. Three youths were seen acting suspiciously in Bleadon Mill. The Police were called, all three were found and one arrested, he admitted stealing a garden strimmer in his possession.

My thanks to the person who called in, you see sometimes all we need is a bit of help to catch the bad guys.

Please remember Bleadon is still one of the safest places in the area to live crime is still quite low and with your help we can keep it low.

PC Steve Church

(Surgery church room every Tuesday 2pm – 4pm)

My 120 Mile Sponsored Bike Ride

Ever since my solo John O Groats to Lands End bike ride in June 2001, I knew in the back of my mind that I would do another charity cycle ride. And on Saturday 23 August 2008 at 5.00am, I set off from our cottage in Bleadon. My fiancée Tanzi saw me off. I was heading for Exeter in Devon, 60 miles away. My mountain bike was newly acquired from Tanzi's brother John Harris, and his father also named John had been working on the bike for me, ensuring I had suitable tyres, that the brakes were perfectly set, and so on. The bike also had full suspension and an 'air pump' seat for comfort. A pannier rack sat over the back wheel, on which sat a pannier bag containing my bike tools, food and drinks.

I was decked out in a fluorescent green jacket, a red flashing light attached to my arm, 2 front lights and back light, and various reflectors. I was truly a Christmas tree on wheels. Within the first hour, while it was still dark, I got a puncture. It was soon sorted and I set off towards Bridgwater, at which point a flock of 15 geese flew over me and I realised how red the sky was in the distance. Things weren't too bad really.

I reached Bridgwater at 6.15am and pressed onto Taunton arriving at 7.15am. I then passed Wellington and took the B3181 towards Exeter. As I approached the border I realised -how much my muscles were already aching and I found the last section quite a struggle. Up to this point I had only drunk water and eaten sandwiches, as I was saving my energy food and drink ie Lucozade, cereal bars and chocolate, for the return trip.

I reached the Exeter border at 10.30am. A kind chap from a nearby house took my photo next to the Exeter sign. I dosed up with energy food and drink and set off back towards Bleadon at 1045am, speeding along hectic roads. I had a lot more energy now. I made good time getting back. With 5 miles to go Tanzi's dad and brother met me to take some photos. I got back home at 4.00pm. Tanzi and her family greeted me at the house. It felt good to have just cycled 120 miles, the most I'd ever done in one day.

All that was left for me to do was collect the sponsor money for Cancer Research UK. There was a number of sponsor forms in circulation, including in the cafe next to Sunnyside road, and in the shop in Bleadon.

Thanks to Tanzi's family John, Angela and John, as well as my own parents David and Angela Parkinson and my brothers Simon and Andrew, in distributing these forms and getting me sponsors. In the end I raised £400.

Thanks to everyone who sponsored me.

Chris Parkinson

Bleadon Ladies Club



As the summer comes to a close, - 'What summer we ask ourselves?' we hope for a really lovely autumn and now may be a good time to consider joining our club as we have a very good programme in place for the next few months.

September 9th – 'History of the British Legion', a talk by Mrs. Doreen Smith

October 14th – 'Return to Kenya', an illustrated talk by Ms. Liz Green

November 11th – Annual general meeting.

December 9th – Christmas lunch at the Batch Hotel

So do come and join us new members are assured of a warm welcome.

For more information ring Barbara on 814362.

CLIC SARGEANT QUIZ

Saturday 22nd November at 7.30pm
in the Coronation Hall

Tickets £8

from Pat Dain 812859

There is always a great demand for tickets
so apply early to avoid disappointment.

IAN DANCE SERVICES

Purn Way, Bleadon, Weston-super-Mare BS24 0QF



17384

Gas Heating & Plumbing

Central Heating Installations

Boilers fitted, serviced and repaired

Family run business

Established over 25 years

Reliable and professional service

Tel: 01934 813 686

Email: info@iandanceservices.co.uk

Website: iandanceservices.co.uk



NEW TO COMPUTING?

STRUGGLING WITH THE INTERNET?
NOT SURE ABOUT E-MAILING?
CAN'T GET THE HANG OF ATTACHMENTS?
NEED HELP WITH ENHANCING PHOTOS?

RING PENNY ON 814142

A list of organisations which regularly use the Coronation Halls

Mondays

| | |
|------------------|--------------------------|
| 11.00 am - 12.00 | Marie's Mini Movers** |
| 2.00 -5.00 pm | Bleadon Bridge Club |
| 7.00 - 9.00 pm | Exercise Classes ** |
| 7.30 pm | British Sugarcraft Guild |
| 1st Monday | W.S.M. Branch |
| 7.30 pm | Bleadon Parish Council |
| 2nd Monday | |

Contact

| | |
|-------------------|---------------|
| Mrs M Keele | 07939 038 071 |
| Mr D Munden | 812772 |
| Mrs M Keele | 07939 038 071 |
| Mrs F Hatcher | 620784 |
| Mr B Poole, Clerk | 07887 802922 |

Tuesdays

| | |
|-----------------|--|
| 2.00 - 4.00 pm | Bleadon Ladies Group |
| 2nd Tuesday | |
| 2.30 - 4.30 pm | Bleadon Short Mat Bowling Club** Sept-May |
| 6.00 - 7.30 pm | Bleadon Brownies** |
| 7.30-9.00 pm | Bleadon Guides** (term time) |
| 7.30 pm | Bleadon Photographic Group |
| 1st,2nd,4th,5th | Sept-May |
| 7.30 pm | Bleadon Horticultural Society |
| 3rd – Oct-June | |

| | |
|----------------|--------|
| Mrs B Pugh | 814362 |
| Mrs G Bonham | 811630 |
| Mrs R Hemmings | 811891 |
| Mrs B Ware | 811545 |
| Mr K Tapley | 623877 |
| Mr C Cudlipp | 813152 |

Wednesdays

| | |
|-----------------|--|
| 10.00 am - noon | Infant Welfare Clinic & Toddler Group |
| 2nd & 4th | |
| 10.00 am - noon | Toddler Group |
| 1st,3rd & 5th | |
| 1.30pm | Yoga Class |
| 7.30pm | Bleadon Players/Rehearsals |

| | |
|----------------------------------|--------|
| The Health Visitor at the Clinic | |
| Mrs E Knight | 625089 |
| Mrs D Marsh | |
| Mrs S Gibbon | 645135 |

Thursdays

| | |
|-----------------|-----------------------------------|
| 10-12 noon | Art: Watercolour painting class** |
| 8.00pm | Bleadon Folk Dancing Group |
| 1st & 3rd Thurs | Sept-June |
| 7.30pm | Bleadon Sugarcraft Club |
| | 4th Thursday |

| | |
|--------------|---------------|
| Mrs B Davies | 813363 |
| Mrs J Thorne | 814007 |
| Mrs C Peters | 843754/626587 |

A list of organisations which regularly use the Coronation Halls

Fridays

| | | | |
|----------------|--------------------------------------|---------------|--------|
| 2-4pm | Bleadon Friendship Club | Mrs B Davies | 813363 |
| 7.00pm | Short Mat Bowling Club** Sept-May | Mrs G Bonham | 811630 |
| 5.30 - 6.30 pm | Pilates Classes | Mrs E Duffill | 623653 |

Saturdays

| | | | |
|--------------|----------------|-------------|--------|
| 3rd Saturday | Village Market | Mrs J Jones | 812370 |
|--------------|----------------|-------------|--------|

Sundays

| | | | |
|------------------|--------------------------|--------------|--------|
| 2.30 Sept-May | Short Mat Bowling Club** | Mrs G Bonham | 811630 |
|------------------|--------------------------|--------------|--------|

**in the Jubilee Room

The Halls are available for hire by private individuals or organisations. There is a reduced rate for Bleadon residents. ENQUIRIES: 812370

Bleadon Market



Our monthly Saturday markets are as popular as ever and we are attracting new stalls all the time. This is Trish from South Farm who is selling a range of home grown fresh produce.

News from the Playground

The annual inspection was carried out by ROSPA during the spring and following their recommendations, it was decided install a new play slide to replace the existing one, which was becoming unsafe.

The bark beneath the swing area was also replaced and the sand in the play pit has been replenished. We hope that in the future we may be able to add more play equipment to the area so further enhancing this well used village amenity. It is a pleasure to see so many children and parents enjoying the facilities that the play area provides.



What's On - In the Coronation Halls - Make a note in your Diary!

| | | | |
|-------------------------------|------------|---------------------|--------------------------|
| Saturday 8th November | 10-12 noon | Coffee Morning | Friendship Club |
| Saturday 15th November | 7.30 pm | Historical Society | 814142 |
| Saturday 22nd November | 7.30 pm | QUIZ in aid of CLIC | |
| Saturday 14th December | 4pm | Christingle Party | Bleadon Church 811490 |

Monthly Village Markets in 2008 (9–12.30):

18th October, 15th November, 6th December – Christmas Market & Fayre

BetterTM

Better Kitchens



**Trade
Prices**

Suppliers to Trade & DIY

**Rigid Kitchens - Worktops - Appliances
Sinks & Taps - Lighting - 3D Design Service**

Call us on: 01934 813201

See our kitchens online - www.betteronline.co.uk

Visit The Showroom

Unit A, Purn House Farm, Bleadon



**We can make any film for you
The Bleadon Film Company**

www.actionwork.com

Tel 01934 815163

Promotional

You Tube

Features

Educate

Videos

DVDs

Web

TV

This Newsletter is Edited by **PENNY ROBINSON** of 1, The Veale, Bleadon BS24 ONP

The cover design is by **JOHN HICKLEY**

Published by **BLEADON PARISH COUNCIL**, Bleadon, North Somerset.

Produced & Printed by **MAXWELL HOUSE PRINTERS**

Tel...01934 822 601 Fax...01934 822 418