

# Bleadon Parish Plan

**our chance to shape our future**



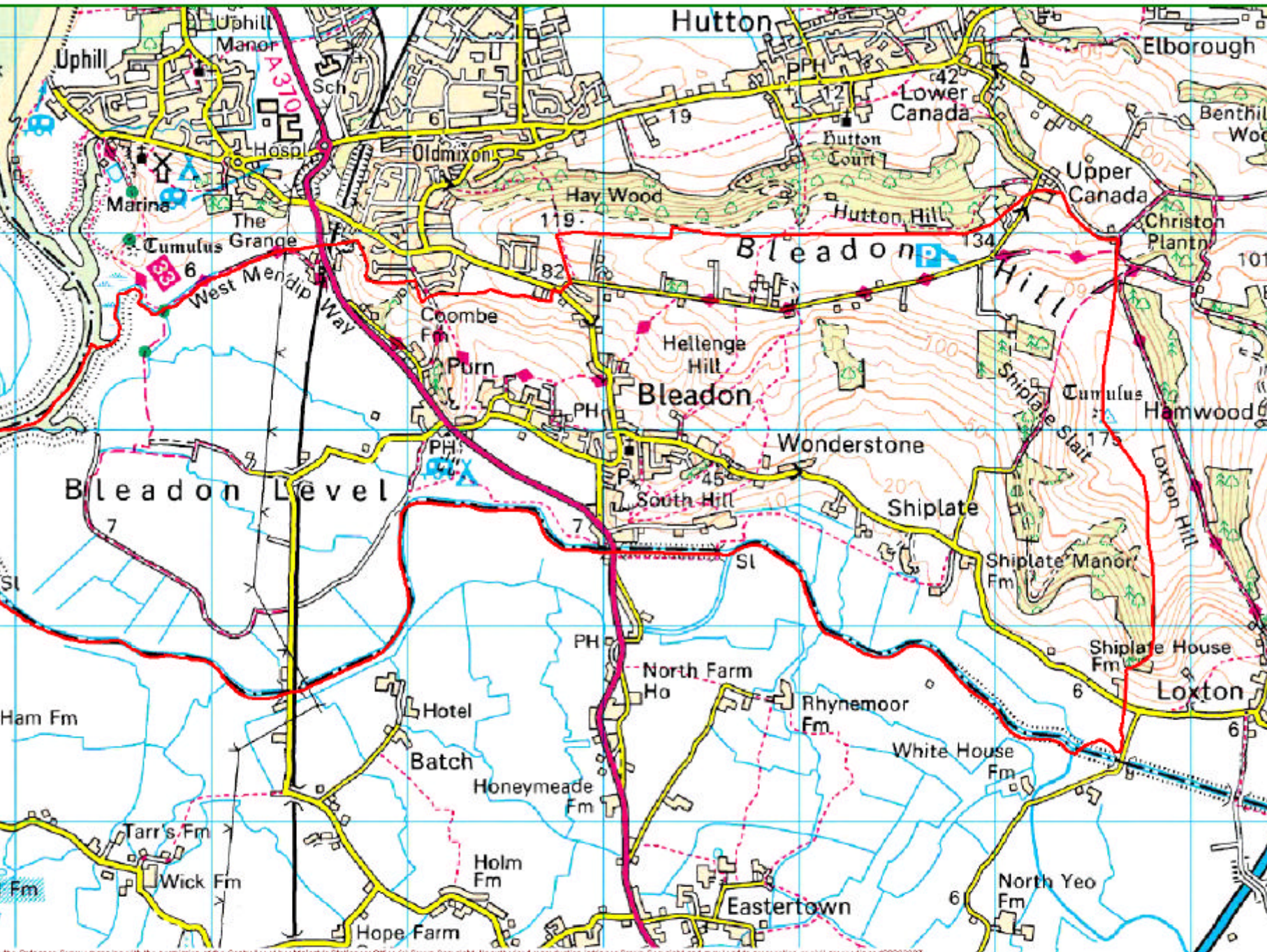
# Welcome

**The future of Bleadon  
starts here today**

Thank you  
for wanting to be part of it

# Today's agenda

- **What is a Parish Plan**
- **Why do we need one?**
- **How do we do it?**
- **How you can help**
- **When do we start?**





# The Plan is your chance to shape Bleadon's future

- Local communities are being empowered to control their own lives
- An opportunity to say what we want



# Part of the government's Vital Villages initiative

The Parish Plan should...

**“ ...set out a vision of what is important,  
how new development can best be fitted in,  
the design and quality standards it should meet,  
how to preserve valued local features and map out  
the facilities which the community needs to  
safeguard for the future.”**

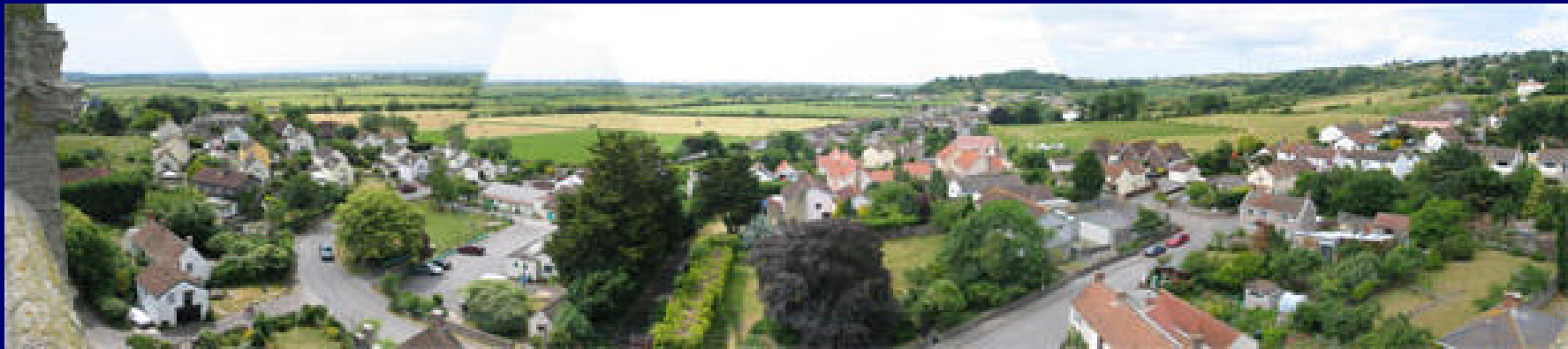
# A Parish Plan should

- Be holistic or comprehensive in scope
- Include everything that's relevant to the people who live and work here
- Identify action needed to achieve it
- Provide a vision for the future development of the parish



# Our Plan is up to us

- It is up to us to, the community to decide what is important to us



# What will this Plan look like?

- There is no standard format.
- It is up to us to identify the issues
- Decide our priorities
- Set out our vision
- Create a plan of action
- Then to present the information in a way that will interest and inspire everyone

# It could be in two parts

- A detailed report explaining the consultation process and conclusions drawn.
- An action plan clearly setting out what needs doing, when, why, by whom and at what cost

# What is important to us?

- Safety in the community
- Our environment
- Employment and prosperity
- Housing development
- Health and well-being
- Opportunities for learning
- Social and leisure activities



# What can be included?

Anything that's important and relevant

- Employment and housing
- Design of new buildings
- Protection of countryside
- Leisure and community activities
- Transport and travel



What else  
can you think of?



# Our Plan should

- **reflect the views of all sections of the community**
- **identify which features and local characteristics we value**
- **identify local problems and opportunities**
- **spell out how residents want the community to develop in the future**
- **prepares a plan of action to achieve this vision.**

# Who decides?

- The Parish Plan gives **everyone** a chance to say what they think about the social, economic and environmental issues affecting our community
- Think about how you would like to see it improved in the future



# What's it leading to?

- **The Parish Plan needs to consider local problems and see opportunities as a whole.**
- **States where the parish wants to be in 5 to 20 years time.**

# Our Plan

- **Will set out our aspirations for the future, to enhance the social, environmental and economic well-being of our inhabitants.**



# Our Plan

- **Will not be confined to projects that only we can achieve on our own.**
- **It will identify those people we need to persuade to help us.**



# It will help decide...



- Action which the **parish itself** proposes to undertake
- Decisions and actions carried out by **others**

# Now a little exercise

**For each of the following write three things about Bleadon :**

- **That you most value**
- **That you dislike and wish to change**

and three ideas...

- **three improvements that you would like to see happen this year**
- **three improvements that you would like to see happen within the next five years**
- **three improvements that you would like to see happen within the next twenty years**

# What happens next?

- Set up **four action groups** to look at four particular themes of the Plan.

# Four themes of the Plan

- **Economy and prosperity**
- **Well-being and safety**
- **Learning and leisure throughout life**
- **Environment**



# Economy and prosperity

- Review existing business
- Examine current + future work patterns
- Look at new business opportunities
- Ask what we/business want
- Locations for business
- Find ways to help

# Well-being and safety

- Look at health in our community
- Future trends and needs
- How will we meet those needs
- Community safety
- Encouraging improvements
- Future hazards

# Learning and leisure

- Pre-school activities
- Schooling
- Encouraging and developing our youth
- Community and social activities
- Encouraging play and discovery
- Providing access for all
- Providing places to play and relax

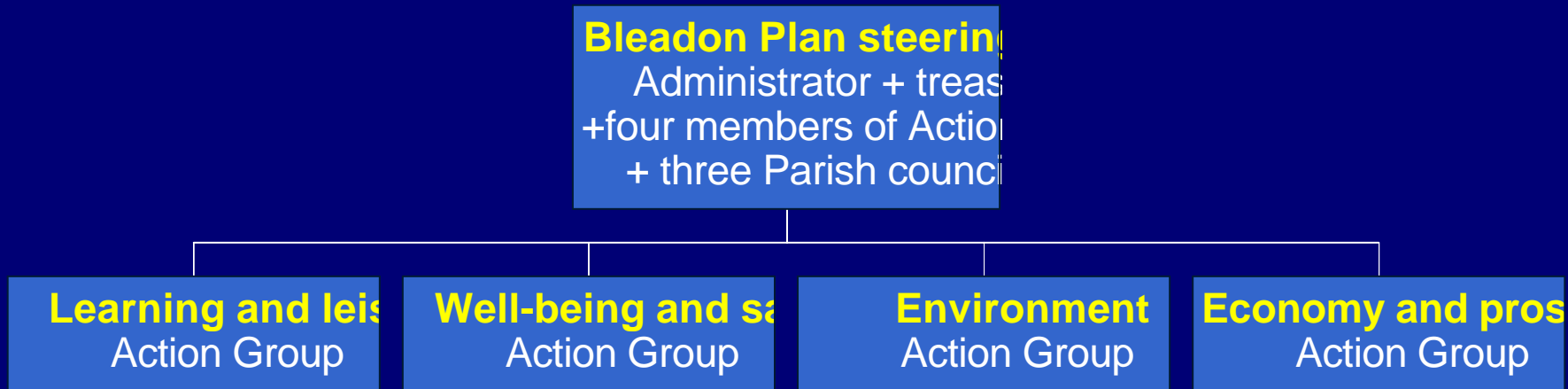
# Environment

- What do we have now
- What do we want to protect/improve
- Housing needs
- Coping with change and growth
- Access to our countryside
- Transport

# Managing the project

- Set up a steering group to manage the entire project
- Keep everyone informed on how the project is progressing
- The steering group will be responsible for coming up with the final action plan

# Action structure



All groups will need to call upon additional volunteers and experts to help deliver their projects

# The 2005 timetable

- **Jan** set up action groups
- **Feb** agree way forward
- **March** questionnaire/survey
- **May** quantify results
- **June** develop ideas
- **Sept** draft parish plan
- **Nov** agree action plan
- **Dec** publish Bleadon plan



Any questions?





Now we want **volunteers**  
for each of those four  
action groups

**Ideally five or six people  
for each group**

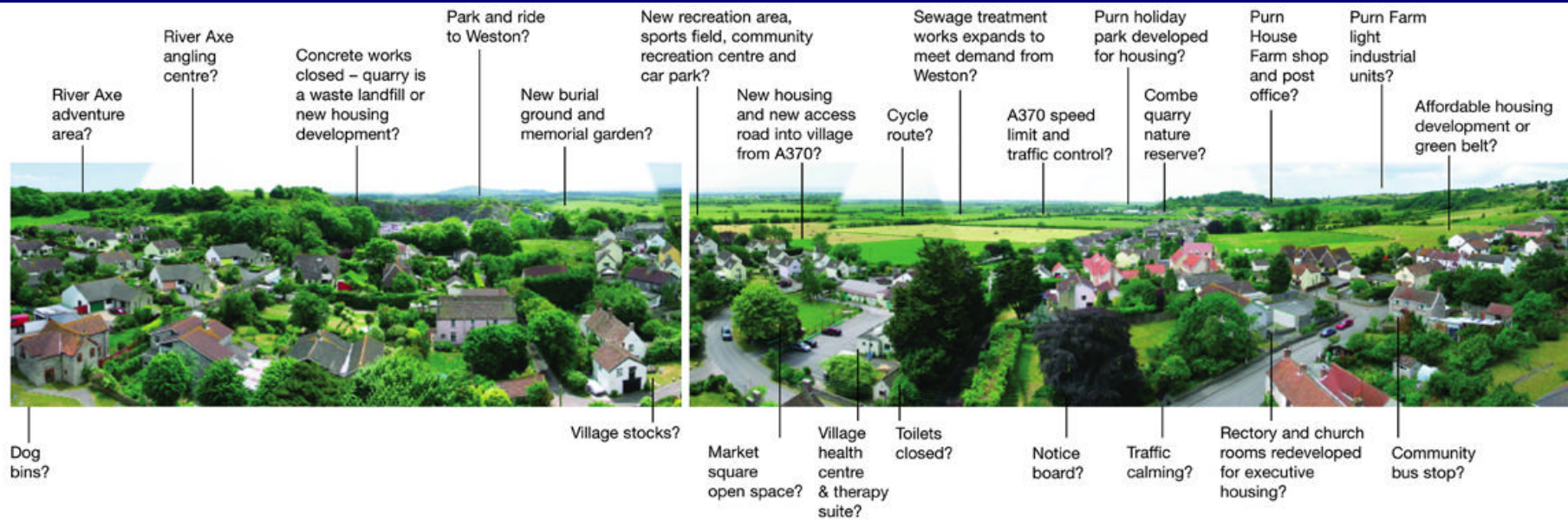
**Plus more volunteers to help with surveys  
and questionnaires**

# Four action group themes

- **Economy and prosperity**
- **Well-being and safety**
- **Learning and leisure**
- **Environment**

# What do you want?

- Circle the things you **like or agree** with
- Cross through the things you **hate**



# What do you want?

- Circle the things you **like or agree** with
- Cross through the things you **hate**



Thank you for coming here  
today and wanting to be  
part of Bleadon's future