

# Bleadon village

FREE to Bleadon homes

# news

[www.bleadonparishcouncil.gov.uk](http://www.bleadonparishcouncil.gov.uk)

Summer 2014 - Issue 99

**INSIDE this Summer issue**

**Marshall's quarry latest**  
**Bleadon Party pics**



**Tandem travels**

**Annual Report 2013/14**

**May Day Fayre sunny success**

**Meet our new PCSO**

**Footpath questions**

**Church works**

**and plenty more news**



# May Day Fayre - a Bleadon great day

and together we raised nearly £6000 towards our church and our youth club



More May Day photos  
inside back cover



• Patios



• Bathroom Installation



• Fencing



• Kitchen Installation • Tiling

Fully insured



• Made to measure Sheds/Summerhouses

T: 01934 815571

M: 07500 018372

E: jim@quicksmartproperty.co.uk



www.quicksmartproperty.co.uk

## Summer issue

What a summer it's been. Pretty much wall to wall sunshine since May. One of those summers that our children will look back on with fond, warm memories, and say to their children "they don't make summers like that any more". One of those summers when we all appreciate our Somerset idyll and thank the Heavens for allowing us the privilege of living here.

As editor of this village voice I'm going to use my privileged licence of expression to thank the many people who made our **May Day Fayre** a huge success again this year. Leading up to the event dozens of you put in many hours of work to ensure that things came together for the day. On the day itself the sun shone and even more of you worked tirelessly to make it a happy and fun experience for all our visitors. Not only did you raise a lot of smiles but you also raised a lot of money for our church and youth club.

Hopefully, the photos inside the front and back cover illustrate what a good time was had by all.

All the bits came together like a well oiled machine and at 11 o'clock people poured into the Coronation car park to enjoy themselves in their hundreds. This year for the first time we had a petting zoo, the Chalice Morris Men entertained us in traditional manner, Smokestax got us rockin' and the kids dressed up as creatures great and small. In the youth club the bric-a-brac did a roaring trade thanks to all the people who help Mary make it work. In the Cory Hall the refreshments were sold out and outside 300 pasties were gone by two in the afternoon.

Thanks to everyone who came and enjoyed themselves. Thanks to the many who worked so hard to make the day a success. Together we made nearly £6000 to be shared between our church and our youth club.

Thank you to all those who worked, those who gave and those that spent.

Ed



Local

People...

...Selling

Local

Property



Make Avery your agent of choice



Free no obligation valuations

Telephone 01934 614893

sales@averyestateagents.co.uk

www.averyestateagents.co.uk

**Bleadon Village News** is published quarterly by Bleadon Parish Council. Contributions to this magazine are very welcome, so long as they are about Bleadon or can directly benefit its residents.

Send your **Village News** contributions to: **Keith Pyke**, Editor

**bleadon.editor@btinternet.com** Tel: 01934 813 127

Unless otherwise stated the opinions and comments expressed in this publication are those of the editor or contributor and may not be those of Bleadon Parish Council.

Printed by Agilisys in partnership with North Somerset Council

# NEWS

**BRIEFING NOTE**  
from North Somerset Council  
Development & Environment  
Directorate

## Marshall's Quarry redevelopment

A formal Application for Outline Planning has now been submitted to North Somerset Council by Marshalls. At the time of writing the application for 42 homes, community space and 500 sq.mtrs of business unit development will be discussed by the NSC Planning committee on 13 August.

**Village News has obtained this exclusive Briefing Note which explains North Somerset Council's position at the time of writing.** It is important to note that things may change after further consultations on 7 August and at the subsequent NSC Planning meeting on 13 August.

This is an **Outline application** that proposes the demolition of all existing industrial buildings and associated offices, storage facilities, plant and machinery on the site and their replacement with a mixed-use development comprising the erection of **42 dwellings and 500m<sup>2</sup> of employment floor space**, together with landscaping and public open space, improved vehicular access, and associated footpaths and cycleways.

The layout is indicative only but nevertheless demonstrates how the site and its uses can be laid out to include a safe developable boundary away from the quarry faces and the avoidance of building in the shadow areas created by the high quarry walls. The application includes details of the 'means of access' but landscaping, layout, scale and

appearance are reserved for *subsequent* approval.

**17 letters of objection have been received.** The principal planning points made are as follows:

- Traffic Calming on Bridge Road would change the character of the village;
- Increase in traffic problems joining A370;
- too many dwellings for the village; drainage & sewage would be unable to cope;
- Mulberry Lane not suitable for access;
- lack of public transport;
- no village school;
- dangerous with no footpath on Bridge Road;
- object to parking restrictions on Bridge Road

The Parish Council is in favour of this development however considers the application in its present form is not acceptable.

There are no objections from consultees to date, subject to suitable planning conditions.

The principal planning issues in this case are (1) policy and principle of development, (2) transportation and highways, (3) employment, (4) impact on the village character (5) impact on adjoining properties (6) biodiversity and landscaping, (7) environmental protection, (8) community infrastructure provision and (9) crime and disorder.

Most of the site is within the settlement limits of Bleadon in the adopted North Somerset Replacement Local Plan, the exception being the upper storage yard on the north side. Nevertheless,



## It's Showtime folks

The Bleadon Horticultural Society 41st Annual Summer Show is all set for **Saturday 6 September**. There's a chance for **everyone, young and old** to show off their prize fruits, vegetables, flowers, pot plants, baking and homecraft skills. Pick up an entry form at the village Post Office & Stores.

Or call Chris Cudlipp on 813152



## BRIEFING NOTE

from North Somerset Council  
Development & Environment  
Directorate

it is recognised that the Sites and Policies Plan Consultation Draft (SAPP) proposes a mixed use site and an amendment to the settlement boundary which goes around the allocation. It is considered that the proposed use of the upper storage yard as part of the planning application is not inappropriate in principle.

Policy CS33-infill development (one or two dwellings) or small scale residential development where the proposal is community led with clear community and environmental benefits will be permitted. Bleadon Quarry site is unusual in that it is mostly within the adopted settlement boundary of the village, yet it is a relatively large non-conforming industrial use in a predominately residential area that is being vacated by the current user. The Parish Council support the principle of redevelopment. Support for allocation although site is larger than small scale as referred to in CS33. Council allocated site for mixed use inc 25 dwellings and community uses. On site affordable housing being sought.

Although the current traffic movements are accepted, the main issue is the change of use proposed by the above application in terms of the character and scale of trips to and from Bridge Road. Bridge Road is a major feeder route into and out of the village. It is important for the applicant to demonstrate how to safely accommodate vehicles,

pedestrian and cycle links from the site into the local network.

Currently the applicant has proposed:

- 1 Installation of a series of humps/cushions/tables along bridge to support the introduction of a 20mph speed limit/zone.
- 2 Rear parking facilities for the four existing properties on Bridge Road adjoining the main entrance.
- 3 Realignment and height restriction of the front boundary walls of the adjacent properties in order to maintain visibility lines
- 4 Provision of a TRO to provide parking restrictions within the visibility splay
- 5 Realignment of the front boundary walls of The Poplars & Magnolia Cottage will allow a new section of footpath to be provided on Bridge Road either side of the site.
- 6 Provision of an aesthetically designed road barrier
- 7 Improved links to the bus stops on the A370

There is no *planning* objection to use of the Mulberry Lane access in the manner proposed in the application (i.e. for pedestrian and pedal cycle use).

There is confidence that when the offices are constructed together with more in depth marketing of new buildings with more supporting information, take-up will occur. Therefore the LPA will expect the business units to be constructed in

stages as occupation of the housing progresses.

No objection in principle to the proposed layout that, in itself, is unlikely to have an adverse impact on the character of the village since it does not link visually with the surrounding village apart from the Bridge Road frontage and no material impact on living conditions of neighbours, though further investigation will take place into concerns about the impact on character arising from e.g traffic calming measures and road barriers opposite the site entrance.

No objection in principle on ecological grounds or on tree protection.

No objection in principle on drainage and flood risk grounds, nor on contamination or public safety grounds

If the application is approved **there is a s106 package proposed, consisting of affordable housing, school places, school transport, on site local areas for play and on site public open space, sport provision, libraries. Community provision, public transport and footpath improvements.**

Matters identified which relate to detailed layout and design of the scheme will be dealt with at the 'reserved matters' stage.

## Coronation Hall improvement plans

For some time now we have been planning improvements to the interior of our two halls. These include a new entrance to serve both halls, removal of the narrow corridor between the two halls to improve the access and a complete refurbishment of the toilets, including a new disabled facility. We have now engaged an architect who will be making the necessary planning applications and seeking possible grant funding.

The exterior walls and doors of both halls have been repainted and now look fresh and bright. A metal ramp has been fitted at the entrance to the main hall for the benefit of wheelchair users.

*Len Chamberlain, Chairman.*



# NEWS



**Overpaid, oversexed and over Bleadon in June.** Photo taken from Pete Williams's bedroom window (honest) of B17 Memphis Belle on way to Weston Air Show.

## My own Satnav

I have a little satnav; it sits there in my car.  
A satnav is a driver's friend; it tells you where you are.  
I have a little satnav; I've had it all my life.  
It's better than a TomTom; my satnav is my wife.  
It gives me full instructions, especially how to drive.  
"It's sixty miles an hour", it says, "You're doing sixty-five".  
It tells me when to stop and start, and when to use the brake.  
And tells me that it's never, ever, safe to overtake.  
It tells me when a light is red and when it goes to green.  
It seems to know instinctively just when to intervene.  
It logs the vehicles just in front and all those to the rear,  
And taking this into account, it specifies my gear.  
I'm sure no other driver has so helpful a device,  
For when we leave and lock the car, it still gives its advice.  
It fills me up with counselling; each journey's pretty fraught,  
So why don't I exchange it, and get a quieter sought?  
Ah well, you see it cleans the house, makes sure I'm properly fed.  
It washes all my shirts and things and keeps me warm in bed.  
Despite all these advantages, and my tendency to scoff,  
I only wish that now and then, I could turn the darn thing off!

Anon (courtesy of Mary Hollis)

## Recycled electricals

As part of its *Don't waste it!* campaign, North Somerset Council encouraged Bleadon residents to recycle their old electronic equipment at the Coronation car park on 31 July.

The council teamed up with Bleadon Parish Council to hold a WEEE (waste electrical and electronic equipment) amnesty event in the centre of the village. **Residents dropped off their unwanted and broken kettles, toasters, TVs, radios, computers, Flymos, drills, printers, Carmen rollers and loads more unwanted electricals.**



If you didn't make it to the WEEE event this time round you can still take your old electricals to the Recycling centre on Aisecombe Way, Weston.

Whatever you do, please don't put old and unwanted electrical goods in your wheely bin. That all goes to landfill and burdens us all hugely in taxes and costs.

# NEWS

## No place for "Bleadon".

The recent Electoral Review rejected Bleadon's request for its name to be included in the District Ward. For the foreseeable future we are to remain the nameless third village in the **Hutton & Locking Ward**.

This is what the Final Electoral Review Report had to say about Bleadon - *"We received one submission regarding this area. This submission was from Bleadon Parish Council which considered that Bleadon should be included in the name of our proposed Hutton & Locking ward. The Parish Council indicated that Bleadon also formed a large part of the ward. We consider that insufficient evidence has been provided to justify modifying the proposed ward name. We have therefore decided to confirm our draft recommendations for this area as final."*

The good thing for Bleadon is that we have retained our two District Councillors representation. Many of the wards in North Somerset have seen reductions in their representation at District level as North Somerset Council will be reduced from 61 councillors to 50.

Come the District Council elections next May you will still be able to vote for two councillors to represent you. All-be-it for Hutton & Locking ward.

## What's in a name anyway?

## When you have friends

What an amazing place Bleadon and its residents are, when we can hold a May Fayre such as the one held here on Monday 5th May. So many compliments from residents and visitors alike. The amount raised in total was £5778.37 and was shared between Friends of Bleadon Church and Bleadon Youth Club. **We would like to thank all who contributed to the running of the May Fayre on the day and all the work done beforehand to make it so successful.**

We held an Open Tower and Teas afternoon in June. Again it was well supported. Our Future events include the **Harvest Supper** on September 29th in the Coronation Hall.

## Individual electoral registration has arrived

**The way you register to vote is changing across the UK. In North Somerset, around 26,000 residents may need to take action to join the new register, even if they were registered in the past.**

North Somerset Council are writing to local residents to tell them about the change. You could be one of those who need to re-register so it's important that you look out for a letter from mid-July onwards that will tell you if you need to take action.

If you receive a letter inviting you to register, it's important you respond so that you can have your say in future elections and referendums.

The registration system changed on 10 June 2014. The new system is called 'individual electoral registration'. Previously, the 'head of household' was responsible for registering everyone who lived at an address, but **now every individual is responsible for their own voter registration**. The new system means that for the first time people can register online. To register, you will need to provide a

few more details, including your National Insurance number and date of birth. This helps make the electoral register more secure.

Most people who are already registered have been transferred automatically to the new register. However, a considerable number will need to re-register in the North Somerset area. There are also people in the area who are not registered to vote at all and so need to register to have their say in elections. If you weren't registered previously, you can register under the new system at [www.gov.uk/yourvotematters](http://www.gov.uk/yourvotematters)

This is the biggest change to the voter registration system in 100 years, and NSC are making sure that people in the district have the information they need to join the new register. The publication of the new register is 1 December 2014 for use at next year's parliamentary, North Somerset Council and Bleadon Parish Council elections.



Tickets will cost £12.50 for a three course meal and Guest Speaker. Posters and tickets will be available shortly.

In November, by request, another **Big Breakfast**, again in the Coronation Hall on November 8th. We will be ending the year with our annual Christmas **Punch and Pie** party on December 6th in the Coronation Hall. We look forward to seeing you at these forthcoming events and thank you for your support.

The number of members of Friends is rapidly decreasing which prejudices the organisation of future events. We would welcome anyone who feel they could help to buck this trend.

Mary Hollis



## Notice board repairs

Thanks to Ranger Ian for repairing the two damaged notice-boards at Bleadon Road and the Veale. By doing the repair work himself he saved the parish council hundreds of pounds. Thanks too to **Andy Harper** for providing new custom-sized oak posts for the Veale at cost.

# NEWS

*Unless otherwise stated the opinions and comments expressed in this publication are those of the editor or contributor and may not be those of Bleadon Parish Council.*

## Watch out there's a thief about - waiting to walk into your home

There has recently been a spate of walk-in opportunist thefts across the Avon & Somerset Policing District.

Please remember to make sure windows and doors are secure, even if you are outside in the garden or garage.

With the warm weather it's tempting to open windows and doors to allow a bit of fresh air in, or whilst pottering in the garden, but remember **it only takes a few seconds for a thief to enter your property and steal your possessions.**

## Holiday time

If you are leaving your property for any length of time, please consider using timer switches, make sure you cancel your deliveries such as milk and papers and ideally ask a neighbour to collect your post on a regular basis.

We are fortunate here in Bleadon to have 100% coverage through **Neighbourhood Watch**. It's always a good idea to let your local Watch co-ordinator know if you are going away for any length of time.



## Recycling food waste just got easier

**You can now use plastic carrier bags to line your food waste bin following a successful trial by North Somerset Council.**

Previously, only newspaper or compostable bags could be used as liners, but the council wants to make it easier and cheaper for people to use the weekly kerbside food waste collection service.

It costs £1.2m to treat and dispose of North Somerset's waste, and only half of the 14,500 tonnes of food waste generated by residents each year is recycled. By composting your kitchen waste at home or using the kerbside collections scheme, you could help to drastically reduce that bill and help keep Council Tax down.

All food waste collected at the kerbside is locally recycled through a new **anaerobic digestion plant in Weston, generating enough electricity to power up to 1,000 homes.** For info visit [www.n-somerset.gov.uk/foodwaste](http://www.n-somerset.gov.uk/foodwaste).

*The only drawback is that I hear the government intends to follow Wales's lead by introducing a 5p plastic bag tax. Ed*



## No doorstep trading village

In April Bleadon saw the installation of our long-awaited signs to tell doorstep traders that they are not welcome here.

Our ex PCSO Emma Wright came along to support Parish Council chairman Penny in overseeing the safe installation of the four signs at the village gateways. Neighbourhood Watch Co-ordinator David Jones was the one who did all the real work.

Since the signs went up we have seen a welcome reduction in the number of traders on our doorsteps.

Just need to stop those damn phone calls now!



## Community Policing changes

Every **Tuesday afternoon** PC Dave Eastham or PCSO Maggie Evans will be patrolling the Bleadon parish between **2:00 - 3:30pm** and on hand to hear any concerns you may have.

Until recently, beat surgeries have been held in the church rooms, but the local team feels it would be of **greater value to be seen in the neighbourhood.**

If you have any issues that you would like to discuss with them, please ring using either of the numbers below, and one of the team will make arrangements to meet you here in the village or at your home.

**PC Dave Eastham  
on 07866 804 504**

**and PCSO Maggie Evans  
on 07824 548 831.**



# Sociable

## Anyone for tennis?

Neighbouring Lympsham Tennis Club is keen to share its delightful facilities with Bleadon residents who fancy starting the game or reviving old tennis skills.

The club has two floodlight courts, a great social side and the ever-popular Lympsham Pavilion for those essential post-tennis drinks. Lympsham boasts multiple league teams in summer and winter, achieving high standards throughout. The club offers some of the lowest membership fees around with some appealing concessionary rates.

Whether you are a beginner, a rusty returner or an experienced league player, we are promised a very warm welcome at Lympsham Tennis Club.

The first Bleadon resident to take advantage of this excellent local facility is June Warburton (pictured with Coach Alastair Gregory). June moved into Bleadon 18 months ago



and loves the friendliness of the village. June says "I was looking to join a local Tennis club and Lympsham was a very obvious choice. It was close to home and easy to get to. Membership was the best value around, but I was also very impressed with the facilities, the informal atmosphere of the club, the mixed abilities of the players meaning I could settle in quickly at my own level. Now the opportunity to enjoy professional coaching is a real plus".

Lympsham Tennis Club offers tennis for all ages and abilities, and has appointed Professional Head Coach

Lympsham Tennis Club's new coach along with Bleadon local lad, Tom Heminway-Arnold. Tom recently became a member of the club and has taken advantage of junior coaching sessions.



Alastair Gregory to provide coaching for everyone from Tiny Tots, to the most experienced league players.

Alastair has over 17 years' experience as a club coach in the local area.

For further details contact the club through [lympshamtc@gmail.com](mailto:lympshamtc@gmail.com) or call Alastair Gregory (Club Coach) on 07970 389552.

## Pilates promises...

....to help improve muscle tone, core strength, flexibility, mobility, posture and balance and is frequently recommended by physiotherapists.

Pilates is suitable for

all ages, and all exercises are low-impact and carried out on a mat, so no jumping about or sweating is involved! Pilates can be performed at a level to suit your own needs, so, whether you are a beginner, recovering from an injury or you already exercise to an advanced level, you should find the classes both beneficial and challenging. **In the Coronation Hall Jubilee Room on Wednesdays from 7 to 8pm.**

Running throughout the year, class fees are currently £33 for a six-week course, individual classes are £7 and there is a student rate of £4.50 per class. You only need comfortable stretchy clothing, socks/bare feet, and an exercise mat and a small towel for extra cushioning.

The qualified and very experienced instructor, Corinne Mutlow, can be contacted on 01934 750 006 or 07919 532 960

or Email: [coz@cmutlow.com](mailto:coz@cmutlow.com), if you'd like more information.

We are a small and very friendly class and we would love you to join us!



## Bleadon Country Sports

Bleadon Country Sports will be on **Saturday 30 August** at Appledore Farm, Lympsham (on A370 near Jeff Browns, Meadgate Garage)

The show has taken place in or around Bleadon for 75 years and there will be lots of fun for the whole family. There are Horse Showing Classes, Dressage, a Companion Dog Show, Child and Adult Sports with a country influence, and Carriage Driving.

This year, there will also be a number of country craft stalls. Refreshments will include locally supplied burgers and sausages, and Styles Icecream from Minehead

As usual, all the show proceeds will go to local charities. The chosen charities for 2014 are Children's Hospice South West, Cinnamon Trust and Exmoor Pony Society.

For info call 01934 815407 or email: [alhillier@aol.co.uk](mailto:alhillier@aol.co.uk)



# Hollywood comes to Bleadon

For one night only the small village of Bleadon is transformed into a Hollywood night at the Oscars!

After months of planning and preparation the Bleadon Party this year was another sell-out success. With the 500 tickets snapped up well before the mid-summer event.

The barn at Lake Farm was transformed into Hollywood. From the Hollywood sign to the famous red carpet, it was all there. All the guests also entered into the spirit from Marilyn Monroe to John Wayne. It seemed that all the stars came out.

The barn once again had been transformed from a humble agricultural store into a film set. This only happens with a really great effort from all those involved.

Rob and Alistair House, John Stokes, Andy Harper, Charlie Bishop, Ian Findlay, Sheep, Miles Orme and many more.

Once again not just a night to remember but also £1000 raised for Cystic Fibrosis.

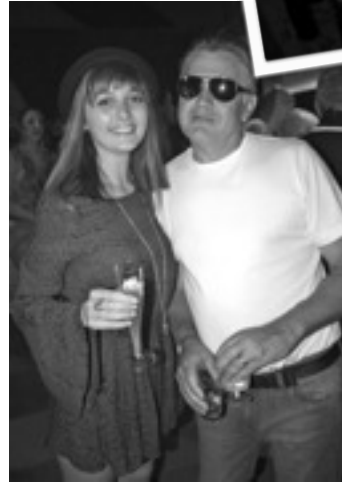
Hopefully, we'll do it all again next year. And a BIG THANK YOU to Alistair House for the use of the barn."

*Miles Orme*

*The party in pictures >*



This year's Bleadon Party at Lake Farm brought out a dazzling constellation of local stars. The Hollywood themed night in June gave 500 movie wannabees the opportunity to dig out their best glam wear, wigs and Max Factor. Much to the delight of a surprising number of cross-dressers!



# Annual report 2013-14

## Chairman's report

The Government has changed the rules relating to how they give the Council Tax Grant to District Councils, which has had a knock on effect as to how the Parish Council receives the Precept. We are seeing a gradual annual reduction in the Benefit Support Grant. It is highly likely that this form of grant will disappear in the future. With all this in mind the Parish Council decided to fix the Precept at the same level as last year albeit producing a deficit budget.

The Coronation Hall and the Jubilee Hall has had the best publicity ever recently appearing in an article in the "Somerset Life" magazine where it was promoting the Village Market and detailing its ups and downs over the past year. Well done to the Hall Management Committee and its many volunteers. It is probably one of the village's greatest assets.

The Youth Club continues to thrive the number of young attending is up with the club currently operating on two nights per week.

Last year a Ball Wall was installed in the Children's Play Area – a hit with the youngsters but initially created some safety concerns. Warning signs were put up but to no avail. Hazards remained. RoSPA was called in to inspect and make recommendations. The solution was to relocate the Ball Wall - cut the tops off at an angle and place them in front of the birch trees. The problem seems to have been resolved and with the on-going programme of improvements all is now well in the Play Park. A new picnic table with easier access for wheelchairs and buggies is in place in time for the summer. No Smoking signs have been promised for the entrance gates to discourage smoking where our youngsters play.

The Churchyard and surrounding wall are the responsibility of the Parish Council so we pay for the care and maintenance. The information from last year was that the wall was

**At the Annual Parish Meeting in April Bleadon Parish Council Chairman Penny Skelley summed up the Parish Council's past year for Bleadon residents.**

complete. The Parish Council however understands from the Diocesan Architect that more work is needed on the older part of the wall and that the railings are past repair. The wall will be raised to the level with the part already repaired and finished in a similar manner. The large tree stump is to be "blasted" and the bank of soil removed. Estimates are currently being sought.

A reminder that this year's Civic Service will take place on Sunday 17th May when all the village parishioners are invited.

Planning site meetings have continued to be undertaken and members of the public are continually encouraged to attend and speak in the public sessions of such meetings. Until very recently very little has been heard regarding the Marshalls Quarry site. Now the Parish Council understands that they have applied for outline planning permission to erect 53 Houses. Be assured the Parish Council will be to the fore in these discussions.

The Public Lavatories are now the property of the Parish Council and our future budgets will include financing this village amenity. Endless questions have been put to the Parish Council over the past three years relating to cancelled buses, incorrect timetables and certainly no forthcoming information from the bus operators. These complaints have been duly passed on to North Somerset District Council and the two District Councillors representing our ward.

A Bleadon Rights of Way Volunteer Group has recently formed who are out in all winds and weathers to clear and re-surface footpaths mend

fences and replace gates. The parish Council thanks the merry band.

The Allotments are in fine fettle with a waiting list of one. The work on the entrance gate is about to commence.

The Neighbourhood Watch Scheme is extended throughout the village – the new yellow signs are up with the words "No Doorstep Trading in the Village" which is a better category than "zone". The Community Police Officer for Bleadon is PC Dave Eastham.

The Annual Contactus Welcome Party sponsored by the Parish Council will be held on Friday June 23rd from 6.30 to 8.30 pm. It is hoped that the Clubs and Societies of the village will come and help welcome the new villagers and tell all that we have to offer in Bleadon.

The Summer plant up will take place on Saturday 10th May in the Coronation Hall Car Park and our source of plants are well within budget.

This report is a short resume of the work the Parish Council covers for this community. More details may be found on the web site and full council reports are found in the Village News and on the notice boards. We meet on the second Monday of each month except for the month of August. Please come and see your volunteer team at work and please remember that we live in Bleadon as well as you do.

*Penny Skelley*

*Chairman Bleadon Parish Council*



# Annual report 2013-14

Parish councillors reported in April on some of the year's ups and downs affecting their individual portfolios

## Footpaths and bridleways

This year has seen some significant improvements to our footpaths thanks to Andy Eddy and his team of volunteers, a programme of work has been identified and is being methodically worked through. North Somerset Council have provided the Parish with gates, posts, a secure metal storage container and other equipment to assist the team known as Bleadon Rights of Way Group (BROW). The BROW team do not undertake any work without a risk assessment, completed by Andy and correct clothing and protective equipment is used. The Parish has been successful in securing four places on a course of instruction for the use of strimmers this was funded mostly by NSC and partly by the Parish Council.

Funds have been allocated by the Parish Council for improvements to the allotments access and footpath, NSC has provided some material to go under new type 1 scalping's this should see a vast improvement to this area. The work has not been undertaken yet due to the inclement weather but is expected to start soon.

The footpath redirection on Southhill Farm is at the appeal stage and the outcome as yet is not known but expected shortly. It is understood that an application will be put in under a ruling that if a pathway not designated as a footpath has been used regularly by walkers for 20 years then an application supported by evidence can be made to NSC to make it a footpath. The pathway in question is on Southhill, I have not seen this application but have recommended the Parish Council support it. It should be noted that the Parish Council currently has one such application put in by Andy Eddy for a permissive path, currently correctly blocked, to be changed to a footpath which would see it reopened this application is now 8 years old and NSC currently have 80 such applications. The pathway in question leads to Hillcote. Until such time as any application is successful then the landowner is quite entitled

to restrict access and any walkers would in effect be trespassing.

Anybody with questions on footpaths and open spaces can always contact me directly or via the Parish Clerk.

*Ian Findlay*

## Planning

The Planning Committee dealt with 19 Planning Applications over the year. Made site visits in the majority of applications to gain a clear understanding of the issues involved and how they may affect the environment we all share.

On all Planning applications, whether large or small, the parish council is keen to ensure that proper legal procedures and enforcements are carried through. From simple roof lights to extensive solar energy farms.

All come under the scrutiny of the Planning Committee. Ultimately it is the District Council that makes the Planning decisions but we hope that our local knowledge and understanding of local issues will help them make the right decisions. Sometimes they do and sometimes they don't.

*Miles Orme*

## Open Spaces

I am pleased to report another good year for our Village and its 'Open Spaces'. Much work and great effort by many is required to keep the village looking good throughout the year.

Having said this, I will begin by mentioning our two now regularly featured problems - litter and dog mess.

The litter around the village - In fairness 'we' are not 'litter throwers' - the introduction of re-cycling has meant that rubbish is often being blown out of the bins. Please may we ask that bins are not placed out for collection before the night prior to collection - and if rubbish is dropped by the collectors at the 'multi collection points' please can it be picked up - both would be a great help and a benefit to all.

The 'litter throwers' tend to be visitors to the village and in particular those visiting the viewing points and the lay-bys in Roman Road. Having chosen to drive there, usually to eat their purchased foods, they must be people who appreciate the views, so it is really difficult to understand why they then choose to spoil it by leaving their food packaging strewn about.

Dog mess - What more can be said - In the past years when writing this report both Penny Robinson and myself have pleaded for cooperation in 'picking up' and using the bins which are placed around the village. So on behalf of those of us with dogs, those without and our dogs themselves - please help us to keep our environment clean. If you know or see an irresponsible owner please inform one of your Councillors - be assured confidentiality will be respected.

Moving on to the positives: The shrub and plant areas as well as the general area around the Village Hall, Youth Club and Play Park have all been well maintained by Tony Derrick our Village Ranger. He also maintains the tidiness around the village and the outlying areas - Accommodation and Roman Roads as well as Hillcote.

The village tubs have once again provided us with splashes of colour throughout the seasons alongside the lovely displays that have been planted or have just appeared on the verges and in the hedgerows.

The general remedial work of trimming, tidying and cutting back the undergrowth around the churchyard has been ongoing through the year. The repairs to the cracks in the church wall in Mulberry Lane had not long been completed when another problem appeared. We are presently seeking quotes for the work required to carry out the repair required.

As a consequence of budget reduction undertaken by the District Council, as from the 1st April 2013 North Somerset Council withdrew their budget for public toilets. This would have meant that our lavatories

# Annual report

## Parish councillors reported in April on some of the year's ups and downs affecting their individual portfolios

would have had to close. After careful consideration we agreed to take on the responsibility to provide and maintain the provision. To cover both the legal and the identified repair costs involved in the transfer of this service and asset North Somerset Council duly awarded us a grant.

We are aware of the need for remedial work to be carried out on the boundary wall of the Play Area and have asked our 'Finance and Personnel Committee' to consider making £1,000 available to enable us to carry out the repair.

Behind the scenes we have produced a 'Terms of Reference for the Open Spaces Committee' – Reviewed / Produced our 'Risk Assessment and the Parish Ranger Work Schedule. Our thanks to the Parish Clerk for his guidance in these matters.

We rely on many people to help in keeping our village looking good and in good repair, our grateful thanks to:

Brian and Jean Thorne for replacing the bench in memory of the late Mr Frank Thorne on Well Green – a most kind thought that benefits us all. I am sure it will be used and appreciated by many over the coming years. The volunteers who help at 'plant up' times and to the residents who kindly take it upon themselves to plant up and tend their own containers.

To Tony Derrick our Village Ranger for his work around the Village

To Mark Howe and his team who continue to maintain the various grassy areas and verges around the village and churchyard and undertaking various other jobs that need attention.

To Mr Capel for keeping the public lavatories clean and in good working order. To those who when coming across litter pick it up.

And finally to those who take the time to report / share their concern/s, suggestions and compliments with us.

Your endeavours and contributions are noticed and greatly appreciated.

*I.D Clarke*

### Play Area

For some years we have been made aware of the noise problem and damage created by young gamesters kicking their footballs against the play area fencing. A practical, simple and robust solution appeared to be to install a wall of timber that the youngsters could aim their kicks at, well away from other park users. But nothing is that simple! A new ball wall of Rowena timber posts was installed just before the summer holidays last year. This was an immediate hit with the youngsters. Unfortunately, the location of the wall adjacent to the southern boundary fence has created other safety problems which subsequently needed to be tackled.

Children were using the structure as a climbing challenge and even using it to jump over the fence into the road. Things improved when warning signs went up, but it appears that even the brightest of children sometimes have difficulty reading warning notices. It was also obvious that our footballers were not yet ready to be signed up by Man United. Sending too many footballs into the road and neighbouring gardens. The parish council called in RoSPA to do an inspection and to make recommendations. The preferred solution was to re-locate the ball wall in front of the two Silver Birch trees on the west side of the play area. The tops of the posts to be cut at an angle to discourage

youngsters climbing along the top of the posts. It was not to be a simple job to uproot the timber posts from their current location. Being very securely installed to withstand the onslaught of hormone enriched youngsters. But in early January the ball wall was moved to its preferred location. I'm pleased to report that the problems appear to have been resolved. As part of its constant programme of improvements to the play area the parish council installed a new picnic table with easy access for wheelchairs and baby buggies. The extra large new picnic table allows access on both sides for wheelchairs or buggies. Positioned close to the play equipment and under the trees to provide shade in the summer or shelter from the rain. Perfect for mums, dads and grandparents to keep an eye on their charges. A No Smoking sign is soon to be installed on the play area gate to discourage any smoking around children playing.

*Keith Pyke*

### Guides and Brownies

Brownies meet in the Jubilee Hall every Tuesday evening under the leadership of Reb, Noush and Linda. As always there's a waiting list for those wanting to join. Following the brief, but delightful, appearance of the Brownies at the May Day Fayre last year they are now practicing their Elephant dance for the 2014 festivities. Plus big celebrations of 100 years of Brownies in 2014.

*Keith Pyke*

### Parish Council attendance in 2013-14

Cllr ID Clarke	attended 10 out of a possible 10 Council meetings
Cllr Ian Findlay	attended 10 out of a possible 10 Council meetings
Cllr Steve Hartree	attended 10 out of a possible 10 Council meetings
Cllr Rob House	attended 8 out of a possible 10 Council meetings
Cllr Clive Morris	attended 9 out of a possible 10 Council meetings
Cllr Miles Orme	attended 9 out of a possible 10 Council meetings
Cllr Keith Pyke	attended 8 out of a possible 10 Council meetings
Cllr Mary Sheppard	attended 9 out of a possible 10 Council meetings
Cllr Penny Skelley	attended 10 out of a possible 10 Council meetings

# Annual report - the figures

## Summary Receipts and Payments for the Year Ended 31 March 2014

Last Year Ended 31st March 2013		Current Year Ended 31st March 2014
33.04	<b>Receipts</b>	
	Interest Received	156.23
<b>33.04</b>		
	Sub Total	<b>156.23</b>
	<b>Operating Income</b>	
40,000.00	General Income	38,000.00
645.00	Other Income	1,474.50
0.00	Council Tax Grant	1,837.32
0.00	Community Asset Grant	8,252.19
288.95	Rents	300.00
1,681.53	VAT Data	4,331.84
<b>42,648.52</b>		
	Total Receipts	<b>54,352.08</b>
	<b>Running Costs</b>	
15,494.64	Staff Costs	15,433.00
10,312.83	Administration	10,150.97
600.00	Grants	500.00
6,070.07	Open Spaces	12,586.16
15,872.74	Special Projects	750.00
4,436.04	VAT Data	1,943.83
<b>52,786.32</b>		
	Total Payments	<b>41,363.96</b>
	<b>Receipts and Payments Summary</b>	
<b>84,480.61</b>	Opening Balance	<b>74,342.81</b>
42,648.52	Add Total Receipts(As Above)	54,352.08
127,129.13		128,694.89
52,786.32	Less Total Payments(As Above)	41,363.96
<b>74,342.81</b>	<b>Closing Balance</b>	<b>87,330.93</b>
	<b>These cumulative funds are represented by :</b>	
8,253.02	Current Account	0.00
60,699.62	Business Account	0.00
5,026.13	Nationwide	5,026.63
364.04	Current Account - Unity	82,304.30
0.00	Unity Trust Bank - Deposit	0.00
<b>74,342.81</b>		<b>87,330.93</b>
	<b>Reserve Balances are represented by :</b>	
-10,137.80	Current Year Fund	12,988.12
42,132.12	General Reserves	33,212.32
3,500.00	EMR - Staff Contingencies	3,500.00
5,000.00	EMR - Pensions	5,000.00
1,100.00	EMR - Election	1,600.00
32,748.49	EMR - Special	31,030.49

Last year ended  
31 March 2013  
**74,342.81**

This year ended  
31 March 2014  
**87,330.93**

EMR = Ear-marked Reserves ring-fenced for special purposes

## An extra bit of colour

Thanks to the hundreds of free plants provided by North Somerset Council contractor **Glendale** we were able to plant up some of the beds around the Coronation Hall earlier this summer.

Colourful petunias and begonias have added a welcome splash throughout the summer despite the long periods of dry weather.

Thank you Glendale.



## Safe play

The annual mid-summer RoSPA safety inspection of the Play Area gave our little patch of fun and games a pretty clean bill of health.

The Ranger had to tighten up one of the swing bolts, and he's added an extra timber support under the slide platform to prevent it from flexing so much.

After a long wait we have, at last, had the No Smoking sign installed on the gate. Thanks to North Somerset NHS.



# Liverpool on a bicycle made for two

Not content with cycling to London two years ago, Malcolm and Grace decided to head north this year to rediscover a favourite city. Inspired or insane? You can share a taste of their recent adventure here, without leaving your armchair.

In January this year we started thinking about a cycling holiday we could do in 2014 and having enjoyed our tandem holiday to London in 2012 decided we would do something similar. South West meant the hills and challenges of Cornwall and Devon and similarly West into Wales presented the same problem. We had already been East so the only option was to head North but where? After checking mileage and wishing to keep it to 7/8 days we decided on Liverpool. A city we had visited a few years ago and were very impressed with lots of interesting things to see. Once again joined by Janet and Dave Jones on their tandem from Worle, we set off on Sunday July 20th and here is our story.

## Day 1 Sunday July 20th Weston to Alveston 44 miles. Weather hot and sunny

OK it does not sound far but trying to keep the mileage down to around 45 miles a day and using country lanes and cycle routes meant we had to find somewhere near to Thornbury so the Premier Inn in Alveston came up trumps. Cycling on familiar ground through Congresbury, Clevedon, Portishead (coffee stop) and across the Avon bridge cycle track into

Avonmouth and Severn Beach for lunch at Shirley's Cafe. This cafe has been running for ever it seems and is a regular stop for all cyclists. From there a ride up through Olveston into Alveston where we stopped at an "Open Garden" sign. This turned out to be not one but 6 gardens all "open" for the day to raise funds for Cancer Research and a mini bus to transport you to all the different locations. £5 well spent to a good cause, we eventually arrived at the hotel at 5.30pm.



*Berkely break on day 2*

## Day 2 Monday July 21st Alveston to Tewkesbury 46 miles. Weather hot and sunny

Deciding to head out without breakfast and stop on the way seemed like a good idea with the canal cafe at Slimbridge our target. However we did not realise that it was 16 miles away but the wait was worthwhile as the breakfast was superb. Thornbury, Berkely, Slimbridge, Gloucester, Tewkesbury. Just outside of Tewkesbury we were overtaken by an enthusiastic young man on a mountain bike, just a mile later we caught and passed him on a long uphill section which he had decided to walk. Grace seemed to find some inner strength to power past and cheerily wish him well without letting on how hard we were trying.

## Day 3 Tuesday July 22nd Tewkesbury to Kidderminster 43 miles Weather hot and sunny.

So now we hit the hills. The Sustrans cycle route between Tewkesbury and Worcester is very hilly including an ascent of Stonehall common, challenging but we were rewarded with a lovely garden centre for coffee as we arrived on the outskirts of Worcester. Then along the canal and country lanes with more hills into Droitwich for lunch. Crossing the country we headed towards Stourbridge and joined the canal to head north into Kidderminster. The temperature was now reaching 28 c and we were relieved to find our hotel for the next two nights had air con in the rooms....bliss!

## Day 4 Wednesday July 23rd Kidderminster Rest Day

A day off the bike with a stroll around the shops of Kidderminster and then a bus ride into Bewdley.

## Day 5 Thursday July 24th Kidderminster to Newport (Shropshire) 45 miles hot and sunny.

Joined by Grace's daughter and her husband for the day on their tandem we faced the challenge of getting through the West Midlands suburbs. This could have been quite difficult, however British Waterways solved our problem with their wonderful canal network which



*Grace pauses on the Avonmouth Bridge*



*On the canal cycle route near Kidderminster*





made a superb relatively flat route through. We did deviate away from the canals at a place called Swindon where we joined an old railway line for several miles which is now a cycle route stopping for coffee and crumpets at the Old Station cafe which was very nice. The track took us into Wolverhampton where we rejoined the canals. After passing under the M54 we joined undulating country lanes through to Newport. Our route was Kidderminster, Swindon, Wombourne, Wolverhampton, Brewood, Newport.

**Day 6 Friday July 25th Newport to Chester 56 miles Weather hot and sunny**  
Our longest day with lots of hills and very hot conditions. Through beautiful country lanes and villages we passed Market Drayton (coffee stop), Aston, Wembury cum Firth and onto Chester. Just outside of Chester we once again joined the canal but it was closed in the city centre so we took the opportunity to walk through the beautiful shopping centre before rejoining the canal and continuing on to Cheshire Oaks where we stopped for the night.



Arriving at Port Sunlight

**Day 7 Saturday July 26th Chester to Liverpool 29 miles Weather still hot and sunny!**

A much shorter ride today with time to stop off at the famous "Eureka" cycling cafe where we were greeted by dozens of other cyclists and where signed team shirts and other cycling paraphernalia adorn the cafe walls. On to Port Sunlight where we stopped for lunch in the heritage centre. Then our final leg up the Wirral to the Mersey Ferry and Liverpool.

**Day 8 Sunday July 27th A day off in Liverpool.**

No one told us the Giants were coming! So our day off in Liverpool was shared with nearly 1,000,000 other people from all over the UK. They had all come to see the giant mechanical puppets celebrating the anniversary of WW1. We did try and see them but soon gave up as we could not get anywhere near their route. Instead we enjoyed the museums and cultural heart of Liverpool which of course included the Cavern Club.

**Day 9 Monday July 28th**

Homeward bound using a one way vehicle hire from a national hire company which was very reasonable and went without any problems.

So 264 miles cycled in 6 days of cycling. We were blessed with fantastic weather and had a wonderful time. No mechanical breakdowns and no punctures.

Not bad for a certain member of our team from Bleadon who is now an octogenarian!

*Malcolm & Grace Gammon*

## Youth Club fund-raising successes

Becka Wright picked up a cheque for £300 on behalf of Bleadon Youth Club at the recent seafront Weston Lions Real Ale Festival.

The **Go Kids Go** grant scheme was offered through a partnership between the **Mercury and Weston Lions Club** which upped its funds to £12,000 this year in a bid to include even more young teams.

Lions spokesman Eric Tones said: "Another great Go Kids Go! year, the judges examined 31 applications. Regrettably we had only a finite fund so in order to award as high a grant as possible we had to decline seven of the applications and award 24 with grants".



A **Quiz Night at the Hobbs Boat** raised £65 for the Youth Club and provided a fun evening in July for the eight teams participating. Thanks to Sandi and her team at Hobbs Boat for organising the quiz and providing refreshments. Thanks to Pam Jordan for organising the raffle and providing the prizes.

## New table-tennis and Football tables

These very welcome funds have helped towards buying a replacement international standard folding table-tennis table and table football for the youth club.



Royston Walters continues his revelations about Bleadon villagers. Here we meet Ken Lamb.

# Village people

## He's behind you!

**Oh no he isn't..... Oh yes he is!  
If you don't know the man you'll  
probably know the face.**

Ken Lamb has been a member of the Bleadon Players these past 14 years and he says that performing in front of the ardent audiences he finds here in Bleadon is one of the most rewarding of his life's experiences. Which means we can be very flattered indeed considering some of the other events in his life.... Ken was born in the war years in West Hartlepool. It's just north of Middlesborough, a traditional industrial heartland; shipyards, steelworks, mines, all sorts of heavy industry in the area. At the time people's approach to life is traditional too, formal, 'old fashioned' values abound which are embodied in his steelworker father.

Ken is the youngest of four in a close knit family, however, his mother combines all the qualities of a devoted, loving mother with that of a spendthrift and Dad has to keep a tight rein on the finances. Just as well, times are hard, Ken is six before he tastes his first banana.

At school Ken finds he's good at technical drawing and becomes an apprentice draughtsman at ICI, a huge employer in the area. This was about the time of Macmillan's 'You've never had it so good' speech and Ken had his choice of about eight openings for a draughtsman locally. During this time he also studied and took qualifications in mechanical engineering.

Four years in front of a drawing board have stirred something in Ken, something that resides in a red cloudless sunset over an open sea. Also his sister has married a merchant seaman and tales of Ceylon, Madagascar and Nagasaki have created in him a strong desire to be elsewhere, to feel winds other than those that come stinging off the North Sea. He applies for a position as an engineer with a shipping line



that has a long history of shipping steel from Middlesborough, ships that return with exotic sounding cargoes like tea, hemp and copra. Ken attends an interview with the Ben Line Shipping Company and on the way to catch the bus home he passes an RAF recruitment office and decides on a whim to enquire about a life in the services. Just for starters they give him a 'tick the box' test at which he scores 100%. The man in charge tells him the result shows his intellectual and reasoning capacity, subject to other tests, could lead to him being offered a Commission. This was an undreamt of opportunity. For a working class lad to become a commissioned officer in RAF would be an unequalled realisation for someone who, only half an hour before, was contemplating a career in the greasy depths of a ship. He jumped at the chance and attended a gruelling four day aircrew assessment course whose avowed intent was to test candidates to breaking point and in the process discover latent leadership qualities. They find he possesses 95% of the qualities to be a navigator and one month later he is a Commissioned Officer in training in her Majesty's Forces.

Having completed his basic training and now aged 21 he is sent for navigational training in Wiltshire and

meets a girl called Pam, they start 'courting'. One evening he is asked to make up the numbers in a darts match at a local pub. An RAF team versus a local all girls team. You can only imagine the undisguised testosterone that was on display at that Wiltshire hostelry that Saturday night, but the girls won!

Ken walks home one of the victorious girls and is struck by how distinct and unlike any other girl she is - except for her name - she's another Pam. Ken asks her to the cinema on the following weekend but Pam, only 17 agrees to accompany him only on condition that they sit in the front row, he buys her a bag of Maltesers and definitely no snogging. This is the unlikely beginning to a now, more than 51 year marriage.

After training Ken is posted with his new young bride to Kinloss, Scotland. As an officer he lives in the officer's mess on base but his wife lives in a flat in a fishmonger's house some distance away. 'No married quarters for under 25's' was a rule adopted by the military during the war. Bearing in mind the loss of life among young men the Government didn't want to be responsible for an abundance of widows, in any event, the directive was still in force in the sixties.

It is 1963 and politically the 'cold war' with Russia is palpable. We all know about the 'four minute warning' we would receive before missiles hit in the event of hostilities. Ken flies with coastal command as part of a crew of 12 in Shackleton aircraft and is in the front line of the country's defences. The squadron is there for intelligence gathering and the planes have an anti submarine capability which includes carrying torpedoes and depth charges. The Russians probe our defences persistently and in response our air force is in a constant state of proactive readiness.

The role of the navigator is not simply 'get them there and get them back'. The pilot is in charge of the engines and airframe but it is the navigator who is the 'tactical co-ordinator'. This means deciding on direction, targets, weapon choice and readiness as well providing an instant response to "Where the hell are we Nav?"

The Warsaw Pact nations employed numerous vessels around our coast disguised as trawlers for their own intelligence gathering and while they did their best at camouflage and concealment they revealed their true purpose by being too clean for working fishing vessels. On one occasion there was a trawler causing particular concern and Ken directs the pilot to take a closer look, they were rewarded by two rockets being fired at them. It transpired that the 'trawler' itself was on station guarding a Russian submarine which was in trouble.

On many occasions, at times perhaps, of political crisis, the crew are ordered to 'go active' when all weapon systems are primed and ready for use and while they are capable of delivering a nasty blow to the enemy they fly with no defence systems of their own.

In the meantime Pam takes pleasure in being a military wife and they are eventually provided with married quarters. The social life is good and despite Ken's sometimes dangerous work there is a certain security and sense of belonging inherent in being part of the military. Moving house, of course, is all part of life in the armed forces and they take that in their stride but Ken is posted, unaccompanied, to a desk job in Bahrain for a year.

The Kingdom of Bahrain is a small island country in the Persian Gulf and was then, in the seventies, of enormous intelligence gathering importance and as Operations Officer Ken was right in the thick of it.

At the centre of the Middle East, Bahrain is neighbour to Iran with clandestine plans to invade Kuwait. Further to the north is Crimea and the Russian Black sea fleet, to the

north west is Israel, further beyond is Turkey which has an age old dispute with Greece relating to Cyprus. To the west, over a road bridge is Saudi Arabia. The political situation is so volatile that every day Ken is responsible for delivering to the top brass of Army, Navy and Air Force an intelligence report and an assessment of how it affects British interests in the area and beyond.

After six months Ken is able to wangle an unofficial trip back to the UK and he and Pam can spend two weeks together before his return to the Gulf for the remainder of his posting, it remains the longest time they have been apart. Such are the sacrifices military personnel make in the defence of the realm.

By the early seventies the Shackleton aircraft is really showing its age, there's a joke in the service that the plane is 20,000 rivets flying in close formation. Coastal command becomes equipped with its replacement, the state of the art Nimrod aircraft and the service feels it comes of age. Ken is posted to Malta, this time with Pam and three children as well.

Malta is another important posting, the Russians have an enormous presence in the Mediterranean and are up to all sorts of shenanigans. In the air force it is usual for the pilot to be captain but not always and for a while Ken, flight leader becomes captain of his aircraft. For him, signing for a multi million pound aircraft and the safety for eleven other crew members was the most sobering, demanding, worrisome but ultimately satisfying responsibility.

While on duty in Malta Ken is informed he has been awarded the Queen's Commendation for Valuable Service in the Air. Yes I know - and he lives in Bleadon. Fancy that!

Ken and Pam's last posting is to Plymouth where Coastal Command has become part of Strike Command but their job is still to locate Russian submarines. It's a cat and mouse game and part of their job to let them know that we know where they are. They drop sonar buoys which 'ping' just to let the Russian Captain know that although he can't be seen he is

by no means invisible. The 'Boys in Blue' guard us to 30 degrees west, a point in the Atlantic where the Americans take over.

After at least 20 house moves and 17 years in the RAF Ken retires from active service. He says it is difficult to make aware, to those who have never experienced it, just how difficult is the transition is to civilian life. The culture shock is absolute and Ken finds difficulty in settling on a profession in which he can best exploit the skills he has. The family move to Clevedon where Ken takes a course in computing and finds a job with Alcan Windows in Weston using early computer aided design programmes. With his knowledge of systems and people management he soon becomes production manager, the children grow and prosper and they move to Bleadon in 1994. After some years the factory closes with the loss of 300 jobs but Ken is comfortable with computer systems and the burgeoning software market and it is this industry that takes him to retirement proper. This is another culture shock for Ken for whom a lack of purpose is a real problem, he withers with the inactivity and it is upon Pam's insistence that he looks for something to do in the village. He finds the Bleadon Players are desperately in need of conscripts and he joins with the intention of, perhaps, doing some stage management or other behind the scenes activity but Ann Northie-Baker has other plans and puts into operation her 'If you are male and breathing you'll act' strategy!! Ken hasn't acted since his school days but he finds with 'The Players' the same pride, fellowship, camaraderie and esprit de corps that he so missed from his time in the forces and a certain tranquillity is restored. It is said that Destiny is made silently, that no trumpets sound when the important decisions of our life are made. Perhaps, very like walking into a recruitment office, like buying a bag of Maltesers for a special girl, or by discovering, once again, as part of a team, that acting is a "brief, dreamy, kind delight".

# Sociable Bleadon



## Horticultural day-trippers

Tuesday 15 July dawned with a blue sky flecked with fluffy white clouds as members and friends of the Bleadon Horticultural Society set off on its summer outing to Stourhead. Stopping for coffee and comfort on the way at Dobbies' wonderful nursery in Shepton Mallet.

At Stourhead the knowledgeable guides helped re-create the atmosphere of 100 years ago and the life of Henry (Harry) Colt Hoare (1880 - 1917) destined to never inherit the family home after being mortally wounded in Palestine in the Great War.

A perfect summer day in which to reflect on so many lives lost.

*Chris Cudlipp*



## Bleadon bag travels

Bleadon's unique bags continue to show up in some unlikely places

*Roger Hart - taken 8am Wednesday 11th December 2013 with his Bleadon bag on its travels to the roof of Africa, Uhuru Peak, Kilimanjaro which is 5895 meters above sea level.*



Roger Hart trekked up Mount Kilimanjaro with two pensioner friends. Not by the traditional 'charity' straight up and down route that all the celebrities do but by the 'back of the mountain' route where the gradients are 1:3. To reach the summit from your camp you take off at midnight wearing a head torch because this last part of the mountain can only be climbed when it is frozen for the reason that the ground is so loose and the ice keeps it together.

At midnight it is minus 12 degrees and the plan is to reach the summit at sunrise when the temperature is about minus 20, but still you perspire. The climb is unassisted by oxygen, and at nearly 20,000 feet the altitude saps your strength to the point where you must rest every five steps or so.

When Roger's team of five made the attempt on the summit there were several other teams doing the same part of the climb. They took off from base camp last and they reached the summit first - in total blizzard conditions, with a Bleadon bag!

*Words by Royston Walters*

# Introducing our new PCSO

It has now been over two months since I resumed my role as a Police Community Support Officer and it was a pleasant surprise to find that upon my return to work, Bleadon was added to the areas I patrol. I had a very warm welcome at the Bleadon welcome event and I have gradually been introduced to other active members of the Bleadon community with whom I am likely to be in contact with on a regular basis.

Not many of you will know that I have been a PCSO over 7 years and was your former PCSO's counterpart working in Banwell, Hutton, Locking and St Georges. Of course, Banwell was dropped and I was given Bleadon which I am very happy about and I continue to cover Hutton, Locking and St Georges. I have worked for Avon & Somerset Police for 13 years and was formerly in charge of the Main Reception at Police Headquarters, until one day a police officer made the comment that I would make a good PCSO and the rest is history as they say ..... I am

familiar with a police background as my father served in the Bristol Constabulary too.

Prior to joining the force, I have worked in an unpaid capacity in the community working for MIND, helping to run children's clubs and Brownies, and latterly heading Messy Church and being involved in the organisation of our church. I am also a volunteer manager for the YHA. In a paid capacity, I worked for Bristol Social Services as a Residential Social Worker which gave me lots of experience in dealing with staff teams and teenagers between 13 – 19 years of age. That was the greatest challenge of my life and helped me to keep into perspective, the raising of my own three children! All in all these experiences have been invaluable in being able to fulfil my role as a PCSO.

Fortunately, it helps that I love the outdoor life which means being out and about in the community which suits me down to the ground whatever the weather!! Some of you



will have seen me already on the walkabout and the picture was taken when walking from Hutton to Locking. I do this sometimes if I don't have a patrol car but would be too time consuming to do all the time. The walking (alongside hiking as a hobby) keeps me fit. So, on my walkabouts and contact in the village, I hope to meet many more residents. In the meantime, if you do have items that are of concern then please ring tel: 101 and one of the beat team will get in touch with you.

**PCSO 7369 Maggie Evans**

## New Ranger takes the reins

The Parish Council is delighted to have appointed Ian Findlay to the post of Parish Ranger following the resignation of Tony Derrick in early May.

Many of you will already be very familiar with Ian because of his involvement in the Parish Council, Cory Hall, May Day

Fayre, the Bleadon Party and many other village events.

Since taking over the role of Parish Ranger in early June Ian has been putting himself about with making numerous improvements to our village environment.

These have already included regular strimming of the Combe Quarry and two Roman Road lay-byes, clearing the beds at the back of the car park and Coronation Hall, repairs to play equipment, repairs and refurbishment of the notice boards and much more. All this on top of the regular day job of litter picking, dealing with fly-tipping, waste disposal and recycling, grounds maintenance and posting our parish notices.

Keep up the good work Ian.



## 25 years on the Bleadon job

Parish Clerk, Bruce Poole celebrated his 25 years of unstinting public service to Bleadon by taking a well-deserved break in Majorca in June. Bruce is recognised throughout his profession as one of Britain's most experienced clerks. We're grateful to have him.



## Mark Howe gardening services

9 Malvern Road, Weston-super-Mare

**Phone 01934 413 594 or 0777 327 2003**

- Regular grass-cutting
- Hedges & trees cut
- Shrubs pruned
- Block paving repairs
- Fence painting
- Turfing
- Patios & chippings laid
- Lawn treatments
- Decking erected
- Patios & paths pressure washed
- Fencing erected & repaired
- Shed erection & repair

# Footpath improvements - who pays?

Recent improvements by the Bleadon Rights of Way (BROW) team of volunteers to the Allotments-Purn footpath has raised some questions from local resident Chris Butler.

Chris wrote to the Parish Clerk querying the cost of the recent footpath work and who is responsible for paying for it.

With the help of Cllr. Ian Findlay BVN takes this opportunity to try and clarify the situation and answer Chris's other questions.

## Who will be recharged for this work?

The surfacing of the footpath from the allotments towards Purn was done because we had scalplings left over from doing the drove and allotments access. Ian took the common sense decision to go as far as the BROW team could with the left over scalplings on the footpath.

The footpath itself was not in a brilliant state and has been subject to flooding in heavy rain. But was walkable and as such would not have attracted any funding to resurface it (in Ian's opinion). It is, therefore, not appropriate to try and invoice any other parties for the work done because:

1 We cannot quantify the amount of scalplings used accurately or the workforce costs.

2 The majority of work was done by volunteers, apart from the digger driver who had to be suitably qualified to operate in a public area.

3 The work was done to enhance the footpath as per previous Parish Council resolutions. Had we run out of scalplings repairing the drove then it would not have happened.

4 The work done in that area has brought nothing but praise and thanks from those parishioners who use the path regularly. To quote one dog walker "Thank you so much for the work done. I love that walk and it has made it an absolute joy to walk now".



*The section of newly surfaced footpath from the allotments towards Purn*

## Who is responsible for the various aspects of this work?

Although, rarely, some paths are entirely privately maintainable, maintenance responsibilities are generally divided between highway authorities, landowners and occupiers as follows:

**Highway authorities (NSC):** surfaces including natural ground vegetation, steps, handrails; some barriers, drains, most bridges and culverts; stepping stones, fords, signposts and waymarks.

**Landowners:** stiles and gates (25% of reasonable costs to be contributed by highway authorities for authorised structures).

**Occupiers:** restoration after ploughing, control of crops, and repair of damage caused by their vehicles on footpaths and bridleways.

**Landowners or occupiers:** control of overhanging vegetation, maintenance of some drains, bridges and culverts.

## A path I use is very overgrown. What can be done about it?

Councils are generally responsible for vegetation growing on the surfaces of paths, although not that overhanging from the sides. Most have an annual cutting programme for countryside paths, but sometimes have missed out

the odd path. Report it to the North Somerset Council Public Rights of Way Officer, preferably giving a grid reference.

We at BROW have a very good relationship with the Council we have an awful lot of assistance from them both in fixtures fittings and maintenance because of the work Andy and his team does.

## What is the parish council's proposed Public Right of Way maintenance schedule?

We cannot provide a regular schedule of work because it does not exist. Work is done on an ad-hoc basis with a phone around for BROW volunteers as and when work is required. If there is no requirement for any footpath work then no meeting takes place

This is a voluntary group of parishioners who undertake work as and when required not a weekly meeting as per say the Mendip Volunteer force who do issue schedules. Any one is welcome to join us but must understand that it is not regular. In fact it is quite the opposite.

We have had contributions from landowners when making repairs, for example the repair to the gate leading onto Terry Trapnell's land where he supplied the gate posts and mini digger to get the work done (far more than 25%)

A risk assessment is completed for all work undertaken by BROW and relevant training has now been undertaken and signage warning of such work printed and laminated at no charge to the parish.

## If it has cost £1,000 for this small part of one Public Right of Way how much will fall on the Parish Precept, Budget and Reserves for all 20 Bleadon PROWs?

The work on the allotments to Purn path was agreed by the Parish Council and in fact, due to volunteers, came in well under budget at £700 and no where near

the £1000 budget allocated from Reserve Funds.

This footpath is something of an exception in Bleadon in that it provides a fairly direct and traffic free route between the centre of the village and the amenities at Purn.

Because of the paths popularity with villagers and the poor state of the surface during wet periods the parish council took the decision to treat it as an exception and lay down surplus surface scalplings. There is no intention to treat all 20 parish paths in this manner. It would urbanise the countryside that we cherish so dearly and the parish council does not have the financial or human resources to undertake such an enterprise.



The newly surfaced footpath through the allotments is a welcome all-weather improvement for walkers and allotment holders.

## 100 years on - let's not forget the 18 villagers who gave their lives in the War to end all wars



### Regular Coronation Hall events

#### Mondays

Bleadon Bridge Club 2-5pm  
Exercise Classes\*\* 7-8pm + 8-9pm  
Bleadon Parish Council 2<sup>nd</sup> Mon 7.30pm

#### Tuesdays

Short Mat Bowls 2.30-4.30pm Sept-May  
Bleadon Brownies\*\* 6-7.30 pm  
Bleadon Photographic Group 1<sup>st</sup>, 2<sup>nd</sup>, 4<sup>th</sup>, 5<sup>th</sup>  
Tues 7.30 pm (Sept-May)  
Bleadon Horticultural Soc 3<sup>rd</sup> Tues 7.30 pm (Oct-June)

#### Wednesdays

Toddler Group 9.30-11.30  
Bleadon Players/Rehearsals 7.30pm  
Bleadon Pilates\*\* 7pm

#### Thursdays

Bleadon Art Group\*\* 10-noon  
Bleadon WI 7.30 2<sup>nd</sup> Thurs  
Bleadon Folk Dancing Group 8pm 3<sup>rd</sup>  
Thurs (Sept-June)  
Bleadon Sugarcraft Club 7.30pm 4<sup>th</sup> Thurs

#### Fridays

Bleadon Friendship Club 2-4pm  
Short Mat Bowls Club\*\* 7pm

#### Saturdays

Village Market 9-12.30 3<sup>rd</sup> Saturday

#### Sundays

Short Mat Bowls Club\*\* 2.30 (Sept-May)

\*\*in the Jubilee Room  
See notice board for contact details  
The Halls are available for hire.  
There's a reduced rate for Bleadon residents. Call Joanne Jones on 812 370.

Fresh Local Produce. Aberdeen Angus Beef. Old Spot Pork. Cheese. Bakery. Bread. Cakes. Pies. Veg. Plants. Fairtrade. Pet Supplies. Books. Crafts. Jewellery. Collectables. Gifts. Bric-a-Brac. Something new every month **and** refreshments. [www.bleadon.org.uk/market](http://www.bleadon.org.uk/market)

# Bleadon Village Monthly Market & community cafe

**SAT  
16  
AUG**

**SAT  
20  
SEPT**

**SAT  
18  
OCT**

**SAT  
15  
NOV**

**SAT  
6  
DEC**

**in the Coronation Halls  
from 9 to 12.30**

Call Joanne on 01934 812 370 for more info

# more NEWS

## Rev

The Churchwardens of our Parish Church of St Peter and St Paul, Bleadon are delighted to announce the appointment of the **Rev. TJ (Tim) Erridge** as the new Priest in Charge of Bleadon and St. Andrews, Bournville.

Tim comes to us from St. Andrew's in Congresbury, so it's only half a name change for him.

The Licensing by the Bishop of Taunton will be in Bleadon church at 7pm on Thursday 25 September. But because of the restricted size of Bleadon church it appears that admission on that special occasion will be by invitation only.

Hopefully, Bleadon Village News will catch up with our new Rector once he is settled in post. Alternatively, eager beavers could always pop into the church after the 25th to put a face to the new name.



## Bus timetable revisions

In an attempt to deliver a more reliable service that arrives and departs on time Crosville have rejigged the No. 83 timetable to and from Bleadon. Reduced from an hourly service to every 90 minutes, the new timetable should allow buses plenty of time for the Worlebury to Bleadon round trip. **Buses operate Monday to Saturday.** No buses run through the village on Sundays or Bank Holidays.

Remembering the new timetable is a bit of a challenge, so here's a reminder.

The Service 83 now leaves from the **Bleadon** Purn Way stop at:

**0910, 1040, 1210, 1340, 1510\*, 1640** and 1810 (to Bleadon Hill only)

*\* service does not operate on school days.*

The 83 returns to Bleadon from **Weston** Regent Street at: **0837, 1015, 1145, 1315, 1615 and 1745**



## Whitehouse

Kennels & Cattery, Somerset

Whitehouse Kennels & Cattery are a family run pet boarding home. Having been in the animal care business for over 25 years we know the importance of your family friend and will provide a truly caring service.

Whether you are looking for pet boarding, relocating abroad, dog grooming, or buying a bed for your cat, Whitehouse Kennels & Cattery is the place for you!

Services include:

- 🐾 Pet Boarding
- 🐾 Day Boarding
- 🐾 Pet Export & Travel
- 🐾 Pet Shop
- 🐾 Cuddle Buddies
- 🐾 Collection & Delivery Service
- 🐾 Grooming Service
- 🐾 Wedding Doggie Services



Find us on Facebook



The Pet Boarding and Travel Experts



OPEN EVERY DAY  
10am - 1pm & 2pm - 6pm

For more information & prices contact us on:

T: 01934 750352 E: enquiries@p-e-t-s.co.uk or visit [www.whitehouse-kennels.co.uk](http://www.whitehouse-kennels.co.uk)  
Whitehouse Kennels & Cattery, North Rd, Eastertown, Lympsham, Somerset BS24 0HS





*It took three masons over two months to complete the exterior stoneworks. Working in extremes of weather from April downpours to June heatwaves.*



## Church works

Last year the Parochial Church Council, based on the advice of the church architect, decided to investigate the cost of essential works to Bleadon Church; these works included complete replacement of the electrical installation, new sound system and repointing external wall.

The total cost of the works including architect's fees were estimated at £75,000 - far more than the PCC had in reserves! Funding from charities was investigated, fund raising events were planned and a leaflet was dropped to every household in the ecclesiastical parish asking for donations at a Gift Day.

Following numerous applications funding was promised by Viridor Credits Environment Co (£22,345), Garfield Weston Foundation (£3,500), Diocesan Fund for Church

Growth (£1,800), Allchurches Trust Ltd (£650), Bleadon Parish Council (£500); an application to Somerset Churches Trust is still outstanding.

Fundraising in the parish (including the 2013 May Day Fayre) and miscellaneous donations amounted to £7,209. Gift Day (including tax recovered under Gift Aid) brought us £9,558, and legacies provided £6,000. The estimated balance of £23,500 is to be taken from reserves.

Local village contractor Kubix NRG undertook all the electrical work, including complete rewiring, new lighting, heating and additional sockets. The new sound system was supplied and installed by Alive Church Systems Ltd of North Cadbury, Somerset and the re-pointing and replacement of some stonework was undertaken by Atwill Stone Company of Almondsbury.

Final accounts for the work and architect's fees have yet to be received but it is anticipated that sufficient funds will be available to cover the full cost.

The successfully completed works will ensure that Bleadon church is fit for purpose for many years to come, and that our new Parish Priest will not have to worry about the church building. Though, of course, there will always be necessary repairs to be made on a 700 year old building.

The importance of an ancient, and well maintained, church in Bleadon cannot be over stated. The church is at the centre of the village and is an essential part of the life of Bleadon, providing for the spiritual needs of the village and marking (with baptisms, weddings and funerals) the rites of passage of villagers in this, and every, age.

*Steve Hartree, PCC Treasurer*

---

## Fancy an allotment?

Usually there is a waiting list for allotments in Bleadon, but there may be a rare vacancy coming up. If you fancy growing your own and escaping to one of the most tranquil and sunny spots in the village please call Cllr Mary Sheppard on 812 921



**Bleadon Parish Council meets** on the **second Monday of the month** at 7.30pm in the Coronation Hall.

An **Agenda** is published on the Parish notice boards and the website at least three days before the meeting.

We welcome parishioners to attend meetings and get actively involved in things that matter to Bleadon.



**Email address for the Parish Clerk**  
[parishclerk@bleadonparishcouncil.gov.uk](mailto:parishclerk@bleadonparishcouncil.gov.uk)

**Parishioners' Voice** is your opportunity at the start of each meeting for you to talk briefly to the Council about any issues you have.

If there is a particular issue you would like to raise **please let the Parish Clerk know by the Friday before the meeting.** This will give him the chance to collect the most up-to-date information available. If it's a last minute issue you wish to raise you can still ask to address the Council but they may not immediately have the answers you require.

Send all correspondence about Bleadon Parish Council matters to the Parish Clerk:  
Bruce Poole, Bleadon Parish Council,  
Rooftops, 10 South Street,  
Burnham-on-Sea TA8 1BS

Tel: 07887 802 922

[parishclerk@bleadonparishcouncil.gov.uk](mailto:parishclerk@bleadonparishcouncil.gov.uk)

Visit the Bleadon parish website at:  
[www.bleadonparishcouncil.gov.uk](http://www.bleadonparishcouncil.gov.uk)



**You will be heard**

**Parishioners' Voice** is your opportunity at the start of each parish council meeting for you to talk briefly to the Council about any issues you have.

If there is a particular issue you would like to raise **please let the Parish Clerk know by the Friday before the meeting.** This will give him the chance to collect the most up-to-date information available.

## Your Bleadon Parish Councillors

<b>I D Clarke</b>	The Granary, Mulberry Lane, Bleadon	Tel: 815182
<b>Steve Hartree</b>	Chestnuts, Chestnut Lane, Bleadon	Tel: 811849
<b>Robert House</b>	Purn House Villa, Purn Lane, Bleadon	Tel: 815 588
<b>Ian Findlay</b> (Vice Chair)	The Mount, Shiplate Road, Bleadon	Tel: 812 862
<b>Clive Morris</b>	20 Bleadon Mill, Bleadon	Tel: 811 591
<b>Miles Orme</b>	Purn House, Bleadon Road, Bleadon	07989 410767
<b>Keith Pyke</b>	8 Whitegate Close, Bleadon	Tel: 813 127
<b>Mary Sheppard</b>	Littlewood, Bridgwater Road, Lympsham	Tel: 812 921
<b>Penny Skelley</b> (Chairman)	Mendip Croft, Celtic Way, Bleadon	Tel: 815 331

**Bleadon Village News** is published quarterly by Bleadon Parish Council.

Contributions to this magazine are very welcome, so long as they are about Bleadon or can directly benefit its residents. Please ensure that your editorial or advertising material reaches the editor at least three weeks before publication.

**Send your Village News contributions to:**

**Keith Pyke**, *Village News Editor*

8 Whitegate Close, Bleadon BS24 0PW

[bleadon.editor@btinternet.com](mailto:bleadon.editor@btinternet.com) Tel: 01934 813 127

*Unless otherwise stated the opinions and comments expressed in this publication are those of the editor or contributor and may not be those of Bleadon Parish Council.*

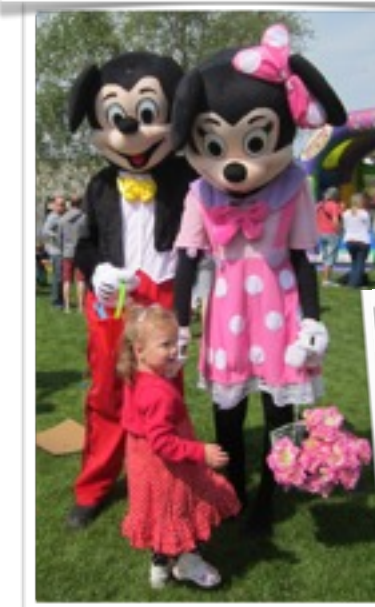
We aim to provide a copy of this magazine free to every household and business in Bleadon. Additional copies are usually available from the editor. We are grateful to the band of volunteers who deliver this newsletter to households. If you can help let me know.

**We do need more volunteer distributors. If you are able to help deliver this magazine to households in Bleadon parish please contact the editor on 01934 813 127**

**The copy deadline for your contributions to the Autumn edition of Bleadon Village News is Friday 19 September.**

# May Day Fayre - a Bleadon great day

and together we raised nearly £6000 towards our church and our youth club



**Bleadon May Day Fayre will be back next year on Monday 4 May.** We hope to see you there. If you would like to help on the day or in all the preparations beforehand please contact: Mary on 811164 or Miles on 07989 410 767



...all over Somerset



DAVID PLAISTER

different perspective

For more information call **01934 815053**

or visit **[www.davidplaister.co.uk](http://www.davidplaister.co.uk)**

PROPERTY AGENTS | SALES & LETTINGS | AUCTIONEERS