

Bleadon village news

www.bleadonparishcouncil.gov.uk

FREE to Bleadon homes

Summer 2012 - Issue 93



INSIDE this Summer issue
Annual Report 2011/12
Infill Village designation
Public toilets under threat



May Day Fayre feature
New Play Area installation



Collect
your child's
Commemorative
Jubilee coin on
Monday 4 June
see back cover

Diamond Jubilee plans



Diamond Jubilee plans



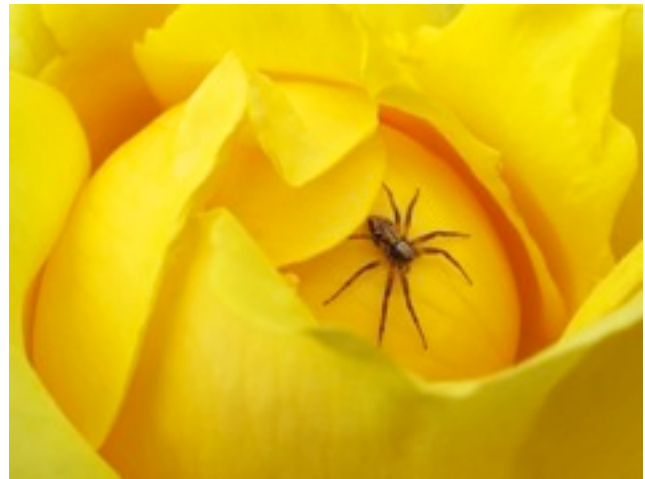
Lindesfarn by Clifford Brown



View from Colston by Carol Wilson



Night train by Colin Walters



Wolf spider on yellow rose by Dennis Cape

Potent by Sally Green



Bleadon Photographic Group

We are a relatively small Photographic Group, whose interest in all aspects and techniques of photography will appeal to anyone wishing to improve and enjoy their photographic skills. Members are actively encouraged to try out the clubs' full programme and contribute their knowledge and expertise, so that all members can benefit. We are affiliated to the Photographic Alliance of Great Britain through the Western Counties Photographic Federation (WCPF) which allows us to invite excellent judges and speakers. We meet from September to May in the Coronation Hall, Coronation Road, Bleadon. Meetings are on Tuesday evenings, with the exception of the third Tuesday in each month, at 7.30 pm.

As we come to the end of our current season we have recently enjoyed our Annual Competition which was expertly judged by John Tilsley APAGB, DPAGB, ARPS. The winners were: Mono Prints - Clifford Brown, Colour Prints - Sally Green and Digital Images - Colin Walters. These pictures display some examples of the wide range of subjects and effects that we enjoy.

You will find us a friendly group, come along and see what we do, new members are very welcome. Browse our website at: www.bleadonphotographicgroup.moonfruit.com or contact Chairman Carol Wilson 01934 628070.

Annual report 2011-12

At the Annual Parish Meeting in April the Chairman gave this report to Bleadon parishioners

Chairman's report

The Precept I know concerns each and every one of us and again has had to be re-adjusted. A full explanation was given at the Annual Parish Meeting.

The Coronation Hall of which we are all so proud has been completely re-painted inside and the original entrance at the front has new doors. Some of you I feel sure assume the Hall takes its name from the Queen's Coronation but it was built in the 1930's and celebrates a 75th birthday at the end of this year. The hall was the centre of the Royal wedding celebrations in June last year and will again be the hub for this year's Diamond Jubilee weekend with the same resounding success.

After years of monthly village markets they are part of the fabric of our village life. The Coronation Hall and Jubilee Room continue to thrive with a well managed committee and a team of volunteers.

I thank the Youth Club's active and vibrant management committee for their commitment to the young of the village and the surrounding areas. I now automatically think of the Play Park. The new equipment installed has been an aspiration for the Parish Council for a long time. Although safe the age of the old swings together with recommendations from the RoSPA annual inspections meant the time had come for replacements. After consulting families and more importantly the children the equipment was chosen with safety at a premium, the age group that used the Park and the fitting in with the surrounding environment. All has been planned carefully so there is more space for other games and play.

After a great deal of consultation with Church authorities the decision was made to rebuild part of the old churchyard wall. The dangerous section was demolished and is in the process of being re-built. Tree stumps had to be removed but the Yew Tree remains so the integrity of the church

yard stays intact. This has been a major project for the Parish Council.

All Planning issues may be viewed on-line by the public. With full discussions at the Parish Planning Committee twice monthly (generally) plus the site meetings you can be assured that all planning applications are thoroughly scrutinised.

I understand why so many of you have grave concerns with the proposals for the Marshalls site. Due to the current economic climate and financial restraints the future plans are on hold. Marshalls and North Somerset District Council will keep the Parish Council up to date with any developments in their forward thinking and this we will convey to you.

Another long and protracted issue for the Parish Council has been the Golf Club on Roman Road. The more recent application with the insistence of the parish council has been called in to the full North Somerset Planning and Regulatory Committee and the written views of the council will then be further considered.

The Allotments are all occupied and well cared for. The waiting list has been somewhat reduced by the splitting some of the larger plots into smaller units.

I thank the Village Ranger Mr Tony Derrick for his sterling work for the village. We are all aware of keeping our village looking its very best. The words "Quality Status" need not only apply to the Parish Council.

Thank you also to our two Community Police Officers PC Steve Church and PCSO Emma Wright for their service to the village and their endorsement of the police priorities we have laid out. Long may they continue with their regular Tuesday afternoon police surgeries in the Church Meeting Room.

Roads and Transport – but what can I say about pot holes!! Except that they always need fixing so we will go on asking North Somerset and completing forms. Nor can I give you

a definite answer to the Bus Route/ Timetable problems. We are still awaiting answers from North Somerset and Webber Bus. I fear there will be no quick solutions.

After the boundary review when Hillcote officially became part of Bleadon Village we agreed to more village signs and to install a notice board. We will endeavour to have this work done this coming financial year.

The annual plant up is on Saturday May 12th at 10am – we always ask for helpers on the day, you don't have to be a gardener and you have probably guessed the colour scheme is Red White and Blue.

The Parish Council took up North Somerset's offer of IT Equipment so that in future we can project on-screen plans and reports at public meetings. This is part of North Somerset's move towards paperless working that will help to reduce costs. The equipment is now installed and will, no doubt, be in great demand.

The members of the Parish Council work hard on your behalf and the welfare of the village is paramount to us. We are proud of our achievements in the past year. Over the past two years 75% of the *103 Village Improvements* aims have been completed. Plus many more that weren't on the list.

Do please come and see us at work on the second Monday of each month. We only stand down in August. May I finish this report by thanking all of you for your continuing support and encouragement for YOUR Parish Council.

Penny Skelley

*Chairman
Bleadon Parish
Council*



Annual report 2011-12

Parish councillors report on the year's ups and downs affecting their individual portfolios of responsibility

Roads and Transport

Last summer some of our roads were resurfaced and repaired and we are grateful to North Somerset Council. We continue to report pot holes as they occur and if anyone has a favourite please let me know and I will report it to the relevant authority.

We are fortunate that the daily bus service into Weston has survived the cuts! The parish Council continues to battle with the bus operators and North Somerset to have The Veale service resumed but our pleas seem to fall on deaf ears. Webber Bus seem determined not to restart this service. It is unfortunate that the Coomb's once a week service from the Veale will disappear in April as a result of cuts Somerset County Council feel necessary.

Cllr Brian Gamble

Planning

I would like to remind you that all Planning Committee Meetings are open to the public and that any member of the public may speak either for or against an application at a Planning Committee Meeting or, with prior notification to the Clerk, to the full Parish Council Meeting. The time, place full agenda of these meetings are advertised on the village website and the village notice boards. Please approach the Chairman or a Councillor or indeed the Parish Clerk if you have any views on a particular application.

For every application our role is to consider the local situation within planning laws and make a recommendation to North Somerset Council who make the final decision. During the past year we considered 22 planning applications of which we recommended 18 for approval and 4 for refusal. North Somerset agreed with all but two of our decisions. We also responded to several Appeals and Enforcement actions. Not only does this indicate that we are coming to the right decisions for the community but I feel that it also shows that North Somerset are sensitive to our views

and that, on the whole, they have empathy for the wishes of our community.

Key issues during the past year have been about the Golf Course on Roman Road and the proposed development of the quarry site by Marshalls which, for commercial reasons, has been delayed by around 12 months.

I am sure that next year will again bring its challenges. Not only are new planning laws being introduced – the Localism Act, North Somerset's Core Strategy etc – but we'll be relying more on computer systems and going paperless to improve efficiency.

Cllrs Mary Sheppard and Clive Morris



Allotments

The waiting list for allotments has been significantly reduced and the allotment holders are very dedicated and competitive. Good luck for the coming year

Cllr Mary Sheppard

Churchyard

I am happy to report that work has started on the Churchyard wall. All



the hacking out of old mortar has been completed; the dangerous section of wall has been demolished and is in the process of being rebuilt. The trees in the churchyard are also in the process of being dealt with. One tree has been removed and I am awaiting quotations on the rest being dealt with. Weather permitting I fully expect for all the work to be completed by the end of May.

Cllr Miles Orme

Special projects

The last year has been very eventful with some notable issues – of which some have been very contentious. Overall the last year has been unquestionably probably one of the most important, by virtue of the fact it has gone some way in modelling the future of Bleadon Village and the impact it will have on the community.

The main events that that encaptured the heart of the village community were the proposals put forward for the development of the field adjacent Bridge Road and the inevitable departure of Marshalls from the Quarry and its planned future development.

The field development was rejected by an overwhelming majority and the Parish council are still pursuing negotiations with Marshalls to ensure that we will all benefit from a scheme that is best suited for Bleadon.

These two major issues culminated in several of our Parish Council meetings having a considerable number of residents in attendance. This inevitably proves that anything that is at all contentious and affects residents directly, people will let their feelings be known.

We, as Councillors are wholly committed to Bleadon and strive to achieve what is best for our village. There were some tough decisions that were made that may not have been to everybody's liking. Rest assured, we endeavour to seek a common sense approach to all aspects that affect village well being

Annual report

and no decisions are taken without detailed consultation.

The publication of the colourful *Bleadon Village News* is a very enjoyable read and is undoubtedly a success story in communicating with our residents over issues discussed at our meetings, together with interesting articles from the contributing public. There are some very interesting people in our village.

I would personally like to thank Keith Pyke for the extremely hard work he has devoted to it and the editorial content and presentation must be the envy of other Parish Councils.

I have recently become a member of the Coronation Hall Management Committee and listened with interest to the issues involved in maintaining the hall and the successful running of it. With the hiring to social clubs and table hire it has proved to be a considerable success over the last 12 months, producing encouraging results. The Coronation Hall and the Jubilee Hall are very worthwhile assets and continue to be the main focal meeting point in the village.

Remember – we care about Bleadon, as I hope does everybody who lives here and we will strive to keep it that way in the coming years.

Cllr Trevor Marshall

Youth Club

It's been a challenging and pivotal year for the Youth Club and the Youth Centre building. The Youth Club Management Committee has had to work hard to ensure the survival of both. Thankfully, we have a vibrant and active management committee who are committed to ensuring success. Plus a very supportive parish council.

From June 2011 we knew for certain that North Somerset Council planned to stop providing the youth club leadership that had been funded and provided for the past 50 years.

We had nine months to come up with ways of continuing to provide



the funding and leadership for our young people if the club was to survive after 31 March 2012.

With over 50 young members and a regular Thursday evening attendance of 30 plus young people we were going to have a lot of disappointed youngsters and parents if we failed.

We're delighted to report that not only has the club survived, but the service it provides has significantly improved. It's still very early days but we are hopeful that both club and building will continue to thrive.

- Mike Jordan's newly formed **Youthworkx** have been commissioned to provide weekly youth club leadership and deliver the majority of the activity programme for our young people
- **Increased youth club activity** - now two evening sessions a week on **Tuesday and Thursday**
- **Extended evening opening hours** by opening from 6.30 to 9.30pm
- **Tuesdays** are themed **project-based** activity. £2 subs per session
- **Thursdays** are **open access social and activity** sessions (much as before). Subs £1.50 per session
- Youth club **extended to 48 weeks** a year. A big improvement on the NSC funded term-time only offer. This means that our young people now have a club through the school holidays.
- Session **subs** have been **increased** from £1 to help fund the new provision
- We are expecting to offer **holiday club and weekend** activities and sessions. Some of these are likely to be over and above those already provided by Youthworkx.
- **Age range extended** to now include Year 6 pupils. This is the age when youngsters begin to express interest in the club.

We have spent the past year fighting the corner for the youth club and we are happy to report the youth club is safe for the near future. We have secured some interim funding and we are both now Bleadon representatives in the South West Rural Commissioning Hub linking the villages of Bleadon, Hutton, Banwell, Winscombe and Sandford. We expect our involvement to give us the opportunity to secure more funding and increase the activities for all the young people of Bleadon and the surrounding areas.

Cllrs Keith Pyke and Miles Orme

Play area

Tony our Village Ranger and contractor Mark Howe have both been busy throughout the year maintaining our much loved and well used village play area. Few villages or towns can boast such a well cared for public space.

Apart from the regular grass cutting, sand and play-bark raking we've had the benches painted with timber preservative and some re-turfing of worn grass areas. Every two weeks the ranger inspects the play area and equipment for risks. If he finds a problem he puts it right.

Our RoSPA inspection last June once again highlighted the potential dangers posed by our ageing swings and climbing frame. Metal corrosion was beginning to attack the 35 year-old equipment and the parish council was advised to look for replacements in the near future.

£10,000 was set aside by the parish council to fund replacement equipment. After extensive research and the usual tendering process Fenland Leisure Products were found to offer the best value replacement equipment. With local firm Spratts doing all the groundworks we were able to commission both companies to undertake the work in April 2012.

Villagers who have seen themselves or their children grow up enjoying the old swings and climbing frame may feel a nostalgic tinge of sadness

Continues overleaf

Annual report

Parish councillors report on the year's ups and downs affecting their individual portfolios of responsibility

to see the brightly painted equipment go. But it had reached the end of its useful life. Hopefully, the new timber equipment will more than compensate.

Because we are installing new equipment we now need to conform to current health and safety guidelines and provide extensive areas of play bark to break any falls from the equipment. This means losing quite a lot of our valued grassed areas.

By concentrating all of the play equipment in the eastern half of the play area we hope to free up more space at the west end for wide games and activities. In such a confined play space it is inevitable that there is some conflict of use between families with young children and the older youths who want to play ball. Until we are blessed with a separate purpose-made ball games area I'm afraid that we must all share with care.

Brownies and Guides

When all three Brownie leaders gave notice that they planned to give up their voluntary roles in the summer of 2011 it looked for a while like the Brownies might fold. Fortunately, three fresh volunteers from Bleadon and Lymsham stepped forward to fill the leadership roles.

Reb, Jade and Anouska brought a fresh mix of new and traditional ideas to the 24 girls who attend at 6pm on a Tuesday evening. The Brownie group continues to thrive, have fun and develop their skills. There is a waiting list to join, so parents with girls aged 7-10 need to register their interest if they wish to become a Brownie.

For the Guides it's been a similar story with two leaders resigning recently. Janet is struggling to keep the group going and desperately needs the support of some new voluntary leaders. This is a great shame because this is a thriving and active group which is a real asset to the girls of Bleadon and surrounding villages.

Cllr Keith Pyke

Coronation Hall

I am pleased to report that the Independent Examiner, Shirley Campbell, has examined the accounts for the year ended 29 February 2012 and she has confirmed that these have been correctly maintained and there is no matter which gives her cause for concern.

The salient points from the 2011/12 accounts are as follows:

(Italic figures in brackets) are those of the previous year for comparative purposes.

Total Income:£18,447 (16,205)

Total Expenditure:£10,626 (13,870)

Net Surplus:£7,821 (2,335)

Net Current Assets:£48,158 (40,337)

The main income has been from hiring the Coronation Hall and Jubilee Room with income up some 16% compared with last year although income from table hire was slightly down on last year. We have seen another year of successful Village Markets for which credit must again go to the many volunteers who assist on these occasions.

We wish to thank the Parish Council for their continuing support and for their donation in connection with the Asbestos Survey undertaken in January 2012. The Parish Council has also been instrumental in arranging for free public access to the internet through a BT Wi-Fi hotspot which will provide additional facilities for all hall users. In conjunction with North Somerset Council, the Parish Council has been able to provide a

portable projector and screen for use in the Jubilee Room which will supplement the fixed projector that has been available for some time to users of the Coronation Hall.

The Total Expenditure of £10,626 (£13,870) covers all aspects of maintaining and running the Coronation Hall and Jubilee Room which includes heating and lighting, water and sewerage, insurance, licences, cleaning, general repairs and improvements. Rising energy costs remain a concern but the additional insulation installed last year is helping to control these factors.

Major items of expenditure were:

- Gas/Electricity:£1953 (£2037)
- Cleaning:£2598 (£2576)
- Insurance:£472 (£434)
- General Maintenance:£489 (£428)
- Hall Improvements:£486 (£5106)

The Coronation Hall and Jubilee Room continue to be popular village venues that are now used by a wide range of people in the community for family events, group meetings, craft meetings, exercise classes, dancing and so on. This all demands continuing investment and I am pleased to report that we have again been able to increase our overall assets to £50,272 (£42,110). After taking into account our current liabilities, the Net Current Assets amount to £48,158 (£40,337).

I should point out that we are maintaining an apparent high level of reserves because we have a medium term plan to improve the central area facilities which would include re-arranging the toilets in both halls. This will be an expensive exercise and, although we will attempt to secure grant aid, the present economic climate indicates that this will be very limited.

This has been another successful year for the Coronation Hall and I would like to thank all members of the Management Committee for their help and support.

Cllr Clive Morris



Annual report ... the figures

Year End - 31-03-12

Summary Receipts and Payments for Year Ended 31st March 2012

Last Year Ended 31st March 2011		Current Year Ended 31st March 2012
	Receipts	
35,500.00	Precept	37,500.00
35.72	Interest Received	35.87
35,535.72	Sub Total	37,535.87
	Operating Income	
1,433.06	Other Income	1,666.12
232.50	Rents	333.26
0.00	VAT Data	1,092.46
37,201.28	Total Receipts	40,627.71
	Running Costs	
16,005.52	Staff Costs	15,899.01
8,134.44	Administration	12,497.69
1,300.00	Grants	700.00
7,288.46	Open Spaces	9,655.08
1,095.05	VAT Data	1,681.53
33,823.47	Total Payments	40,433.31
	Receipts and Payments Summary	
80,908.40	Opening Balance	84,286.21
37,201.28	Add Total Receipts(As Above)	40,627.71
118,109.68		124,913.92
33,823.47	Less Total Payments(As Above)	40,433.31
84,286.21	Closing Balance	84,480.61
	These cumulative funds are represented by :	
8,629.28	Current Account	8,787.81
70,631.75	Business Account	70,667.17
5,025.18	Nationwide	5,025.63
84,286.21		84,480.61
	Reserve Balances are represented by :	
3,377.81	Current Year Fund	194.40
23,687.11	General Reserves	27,064.92
3,000.00	EMR - Staff Contingencies	3,000.00
5,000.00	EMR - Pensions	5,000.00
600.00	EMR - Election	600.00
48,621.29	EMR - Special	48,621.29
84,286.21		84,480.61

Signed: Penny Skelley (Chairman)

Bruce Poole (Responsible Finance Officer)

NEWS



Sparkling Diamond Jubilee celebrations in Bleadon

Bleadon is all set to celebrate the Queen's Diamond Jubilee with a big Band, Scarecrows, Pork & Cider in the park, a Family Fun Day and delicious Cream Teas.

- On Monday 4 June the parish council will give all **Bleadon children** under 16 a unique Queen's Diamond Jubilee commemorative coin stamped with the Bleadon logo to mark the occasion. Families can

collect from Penny in the car park at the Family Fun Day 12-4pm. You may need to provide ID.

- The **Scarecrow Festival** is being held over the extended holiday weekend. The theme this year being **Kings & Queens**. We want everyone to participate, build a wacky scarecrow and fill the parish with fun and colour this special Jubilee weekend. **Scarecrow**



Trail maps will be on sale in the Coronation car park throughout the weekend from 11am til 4pm.

- Somerset **Roast Pork & Thatchers Cider** will be the tasty lunchtime treat on the Green alongside the Youth Centre on **Saturday 2 June**. Scarecrow hunters can drop by for refreshment in the sun.

- The RAFA Band** will be performing to a packed audience in the Coronation Hall on **Saturday evening**. Tickets to this musical extravaganza have already sold out.

- The Youth Club has put together a fabulous **Family Fun-filled Day** of activities for **Monday 4 June** from noon. Face painting, bouncy castles, an inflatable Gladiator contest, graffiti art, push-cart racing, street dancing, fun games for all ages, badge-making and a BBQ.
- The Friends of the Church will be offering scrumptious **Cream Teas** in the Coronation Hall on **Monday afternoon** from 2.30pm.

Please note that the Coronation car park will be **closed to vehicles on Monday**



Youth Centre to get a colourful make-over

Following a successful application to the *Let's Colour Project* earlier this month the youth centre management team have been awarded 150 litres of Dulux paint to give the building a colourful make-over inside and out.

The Let's Colour Project is as much about transforming the lives of people all over the world as it is about sharing the joy of bright and beautiful colours using Dulux paint. Bleadon will be joining communities from China to Brazil who have helped transform their living spaces.

We hope that people from throughout the village will come together to help with the painting project. The plan is to have a big **Let's Colour Day** sometime in **August**. Materials and paint will be provided. All we ask for is your time, energy and enthusiasm.

If you want to help please contact Keith on 01934 813127 or email: keith.pyke@bopenworld.com

Find out more about the Let's Colour Project at: www.letscolour.co.uk



Street lights set to switch off

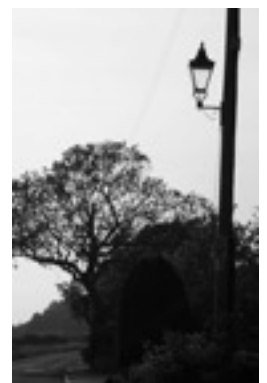
Later this year Bleadon is scheduled to join the other communities in North Somerset that have their street lights turned off between midnight and 5am in the winter and 1am to dawn in summer.

By switching off lights at quiet times at night North Somerset Council hopes to be saving over £300,000 each year across the District. Switching off lights was carefully considered and investigated. Trials carried out in 2007 and 2010 ensured that the council and police were satisfied that there was no impact on safety or crime.

The parish council owns and manages a small number of street lights in the centre of the village. It has yet to decide whether these will join the majority controlled by North Somerset in the big switch off.

Areas affected by the switch off

Amesbury Drive
Bleadon Mill
Bridgwater Road
Celtic Way
Coronation Road
Fern Lea
Manor Grange
Pine Lea
Purn Way
Shiplate Lane
South Combe
The Barton
Whitegate Close



NEWS

Your new parish councillor

Recently co-opted onto the parish council, Pete Trevitt reveals a little about himself and what he hopes to bring to the parish council and the people of Bleadon.



I have been a resident of Bleadon for six years and live in Bleadon Mill with my wife Sarah and two daughters Maisie (10) and Lily (3). From Surrey, we initially moved to Bristol in 2000 but one day discovered the beautiful village of Bleadon. After a pub lunch in The Queens and having met some lovely people, we vowed to move here and did so within the year. Bleadon is such a warm friendly place to live, it has that true village spirit.

I work in Bristol as a Product Manager for a software company, although I would not say I am skilled in IT. I may design software but I have just as much trouble as the next man setting up a printer or Wifi.

My initial focus as a councillor is to try and involve a wider audience and raise awareness of the work the Parish Council does. To build on the existing communications like the Village News I have set up a facebook page: www.facebook.com/bleadonparishcouncil. I really want everyone in the village to understand how we can help them and how they can get involved too, and do that by using the Social Media tools at our disposal today. I want to hear from young families of Bleadon and what they want from their village. After that, who knows!

Restoring an ancient wall

Work on restoring and making safe the churchyard wall that bounds Mulberry Lane has been severely hampered by the wet weather. Now that warmer and (hopefully) drier weather is with us we hope to see the work completed around the end of May. Using the ancient mortar mix of lime and sand has restricted work to dry weather. This traditional mix looks right in the context of our 700 year old church and allows rain water to gradually seep through the wall from the high churchyard behind to drain safely away.



Bleadon designated as an Infill Village

North Somerset Council has recently published its Core Strategy outlining its strategy and values for future planning and development. After consultation with the parish council Bleadon has been designated as an Infill Village.

The **Core Strategy Vision** states...

...That rural areas will retain and enhance their countryside character where the quality of the natural environment is the prime objective and any new development will be small scale and strictly controlled.

The infill villages will have maintained or enhanced their individual character, identity and sense of community.

Accessibility will be improved to facilities and services not locally available within nearby larger settlements.

The surrounding countryside will have retained its open natural character, its distinctive landscapes protected from inappropriate development, agricultural use supported and valued for its biodiversity.

For the Infill Villages like Bleadon this permits:

- Infill development (one or two dwellings)
- Small scale residential redevelopment where the proposal is community led with clear community and environmental benefits.
- Conversions to residential although it must be demonstrated that if the site or premises was last used for an economic use, that continuation in economic use is unsuitable.
- Affordable housing
- Essential rural workers dwellings
- Replacement dwellings
- Subdivisions
- Small scale employment (including recreation and tourism) development providing it is of appropriate scale and character
- Shops and community uses

NEWS

Civic Service

Following a suggestion late last year from our Parish Rector Philip Stevens the parish council held its first ever Civic Service in the village church in April.

Parish councillors past and present came with their families and friends to celebrate the work of the community we all share.

It was a delightful afternoon of hymns, praise and prayer, cakes and flowers.

Thanks go to Philip for suggesting this, to the ladies who arranged the flowers so beautifully, and the Friends of the Church who provided the scrummy refreshments.



Bleadon bag travels

Bleadon's unique bags continue to show up in unlikely places

Far west

Penny Robinson thought you might like to see where her Bleadon Bag has got to this year.

The place is **Iguazu Falls** in Northern Argentina on the border with Brazil. The bag visited both sides but photos were taken in Argentina.

The bag stayed two nights in tropical rain forest and got very wet in the process, however it has come home none the worse for its adventures.



and far east

Joanna flashes her Bleadon bag in an aromatic spice filled muddy street market on the island of **Lombok** in Indonesia.

NEWS

Play area refurbishment

Last year the parish council set aside £10,000 from its reserves to replace the ageing swings and climbing frame that had provided fun and exercise for two generations.

Thinking I would keep ahead of the contractors with an early start I arrived on site at 9am. on a cool Monday morning in April, to find that Spratts had already dismantled and removed the swings and climber. They were now well into digging up the tonnes of concrete that had held it all in place. Clearly, I needed to be up a lot earlier if I was going to keep on top of this project. So much for retirement!

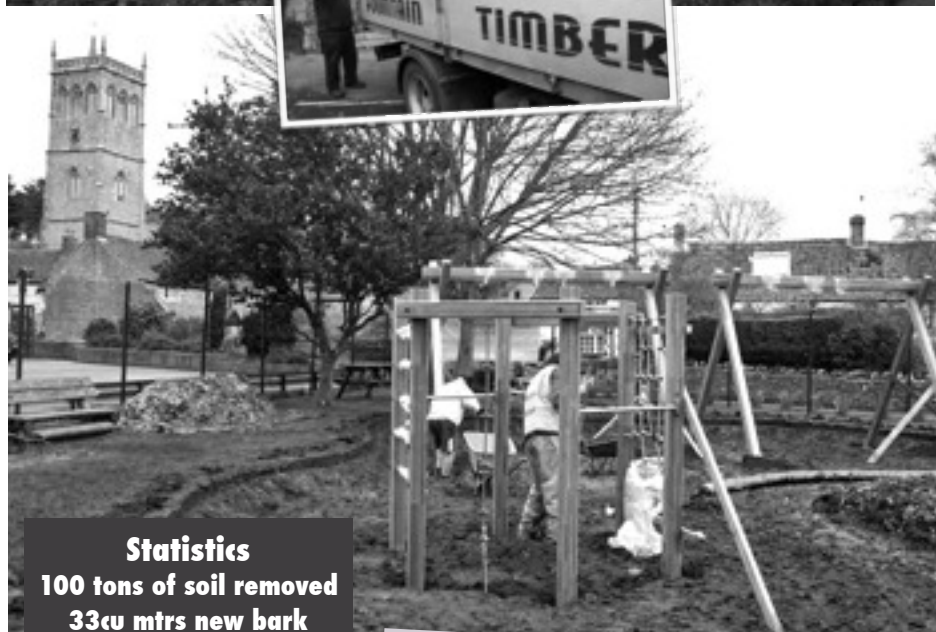
For the first day and a half the weather blessed us by remaining dry whilst much of the estimated 100 tons of soil and concrete were removed to prepare for the new climber and swings.

On the Tuesday afternoon Martyn from Fenland Leisure Products arrived to check and mark out the site for the new equipment. Two problems then arose - it started to rain (and continued for most of the rest of the week), and I hadn't allowed enough "fall area" for the new kit. These days every piece of playground equipment has a recommended fall area surrounding it. This fall area has to be soft and big enough for a child not to be seriously hurt when falling or jumping off the play equipment. I had hoped that these fall areas could overlap a bit in order to save having huge areas of play bark. It was not to be. The ever obliging Spratts agreed to excavate the additional sodden ground to accommodate the growing fall area.

Three loads of play bark were delivered by Fountain Timber. This was later swallowed up by the newly created 300mm deep fall area.

Despite the weather the project was completed on time, apart from a small hitch with some of the swing chains. There is still turf to be laid where the old sand pit used to be, but Mark Howe should be getting on with that soon.

KP



Statistics

100 tons of soil removed
33cu mtrs new bark
1 ton of new play sand
1 ton of new concrete
Cost £10,000

Thanks to
Spratt Plant Hire
Fenland Leisure Products
Fountain Timber

Is the Big Society working?

We may have a future parish councillor in the making. The local footballing lad, frustrated at not having access to the play area during the work, reckoned he would have done the job in a couple of days and for nothing! We've got to get him onto the council when he's 18.

NEWS...some not so good



WiFi installed in Bleadon Youth Centre but not working quite as hoped

As promised, the Parish Council has commissioned BT to install broadband Wi-Fi on the Coronation Road site. The intention being that all users should be able to have free access to the internet anywhere in the Coronation Halls, Play Area, car park and Youth Centre.

Following BT's recommendation the new broadband business hub was installed in the Youth Centre roof space. This was the nearest access point to a phone line and was promised to work over an 80 -200 metres range.

However, it seems that the range is not as good as expected and the system stubbornly refuses to penetrate the Coronation Hall, which was its primary purpose. Now we wait for BT to return and resolve the problem.

In the meantime you can freely access the hub in the car park and play area. Just look for the BTBusinessHub-031 and use the password 2465988816 for now.

Some better news about Bleadon Sluice

It looks like we may be seeing the replacement of the sluice on the River Axe after years of negotiation between the responsible environmental bodies.

Bleadon Sluice suffered a failure in December 2009 and it was considered that the structure was unsafe to operate. The Environment Agency and Bristol Water made a joint decision to undertake major works to the steel superstructure after it was agreed that it would be uneconomical to undertake further routine repairs on a sluice of its age.

Legal complexities

The legal situation surrounding Bleadon Sluice is very complex, and has taken longer than hoped to resolve. The Environment Agency have been working closely with Bristol Water and are committed to securing the best solution.

New sluice design proposals

The proposal is to build a new steel superstructure that can provide the same panned level but also allow more flexible operation, providing environmental and flood risk benefits.

The proposed design is now being discussed with Bristol Water and the Internal Drainage Board and the agencies hope to present proposals to



the community soon. Work is expected to begin later this year.

Temporary solution

At the time of the failure, the agencies carefully considered the best way to manage levels in the Axe and Cheddar Yeo while continuing to provide the benefits that were enjoyed by the local community. We have a temporary solution in place that has minimum impact on the environment and does not increase the flood risk. The height of the river is currently controlled by using the Brean Cross Sluice, however this is only a temporary measure until Bleadon Sluice is brought back into operation.

The Environment Agency have promised to let us all know as soon as they have a date for the start of the works.



More bad news for isolated Veale and Shiplate residents

After reporting in the last issue of BVN that the Veale residents at least had the limited benefit of a Wednesday bus service, I now hear that even this 831 service has been withdrawn.

The parish council is still waiting to receive a response from North Somerset Council regarding the re-introduction of a regular (or any) bus service to the Veale.

So long as convenience for drivers takes precedence over service for passengers on the 83 route it seems highly unlikely that we shall see a return of this valued service to the Veale.

Thank you planters

The team of village volunteers who turned up on 12 May to plant out the village flower tubs were rewarded with sunshine. Thanks to everyone who helped bring some added colour to Bleadon.



In-conveniences

Our village centre public toilets are under threat as North Somerset Council withdraw funding

The North Somerset Council budget for public conveniences is being withdrawn from 1st April 2013. This is one of the consequences of the 40% budget reduction currently being undertaken by the District Council.

From April 2013 North Somerset Council will no longer be providing this service.

This means that in less than a year our public toilets will close, unless someone else steps in to provide the service.

North Somerset are keen to ensure that where a service is valued by its community it should continue to be provided in some form.

However, it is also determined that the cost of continuing to provide the service should not have a significant impact on the local council tax payer. For example by transferring the cost to the Parish Precept.

Opinion surveys conducted by the parish council over the past ten years suggest that the conveniences are valued by the community and most villagers would not like to see them closed. It is questionable how many residents actually use the facilities.

The perception is that users comprise car park and play area users, church-goers, walkers and passing traffic (including bus drivers).

North Somerset plan to conduct surveys of usage over the coming months. Then we shall have a better understanding of how many people actually benefit from this facility.

The highly visible village centre location of our public toilets means that this community would not tolerate seeing the building closed and boarded up. Should the building cease to be a public convenience an acceptable alternative use must be found, or the building demolished.

The main options

- **NSC close the facility and board up the building on 1 April 2013.** Experience suggests that NSC will not go to the expense of removing the building and making good the site. Boarding up is the cheapest option for them.
- **The parish council takes over operation of the service** in the existing building. Tries to find ways of reducing the cost of the service and operates it without a significant impact on the Parish Precept. Ownership of the building and land (the asset) remains in the custody of North Somerset.
- **The parish council takes over the service and the asset.** Thereby ensuring that it has the flexibility to operate a service from any chosen village location should the building become redundant. NSC is currently opposed to transferring its assets (losing ownership). However, Bleadon is in an unusual situation in that it owns the surrounding land and has a vision for improved community facilities on this whole Coronation Road site.

Other options to consider

- The parish council negotiates with local community services and businesses to provide access to their toilet facilities for the general public (non customers). This operates in other towns and villages throughout Britain and elsewhere around the world. We would then cease to provide the conventional public conveniences as a separate entity.
- Offer the current facility to a commercial operator to manage and operate the toilets as a business. A commercial operator will charge for use of facilities.
- Raise income from other sources (such as car parking) to pay for the conveniences.
- Secure business sponsorship for the current public conveniences.

The parish council has charged its Open Spaces Committee to liaise with North Somerset Council and find an affordable and practical solution that will be in the best long-term interest of our community.



Mark Howe gardening services

9 Malvern Road, Weston-super-Mare

Phone 01934 413 594 or 0777 327 2003

- Regular grass-cutting
- Hedges & trees cut
- Shrubs pruned
- Block paving repairs
- Fence painting
- Turfing
- Patios & chippings laid
- Lawn treatments
- Decking erected
- Patios & paths pressure washed
- Fencing erected & repaired
- Shed erection & repair



Tree Services *a cut above*

- Hedge trimming, tree pruning, removal, reduction
- Dead or dangerous trees removed
- Stump grinding
- Tree planting
- All domestic and commercial work undertaken
- Logs and Woodchip sold

Fully qualified and insured | Free quotes & advice

Office: 01934 814 941

RJ Drinkwater: 07855 911 046 O Till 07733 017 213

PLASTECH

WINDOWS & CONSERVATORIES

*Your local specialists in installation
of high quality UPVC*

- doors
- windows
- patio doors
- fascias
- cladding
- guttering
- full range of conservatories

Established 1989

*We offer top quality products
custom made to almost any design*

- A FENSA Registered Company
- Member of the Guild of Master Craftsmen
- British Standard BS5713 Glass Units

For prompt and personal service call Simon

Bleadon: 01934 814 500

Mobile: 07774 47 57 36

Grass cutting
and Lawn Care
Service

*For all your
Interior and Exterior Services*

Tel: 01934 813 100

Mobile: 07813 175 423

Dave Baxter

Garden design, Landscaping, Turfing,
Pruning, Decking, Patios, Fencing,
Pergolas, Sheds....

...in fact all general garden maintenance
and construction undertaken.

**Also
Interior Painting, Decorating
and Carpentry**

Let me give you a fair quote.

Free Estimates

Reliable and honest service

Fully Insured

WHITEHOUSE KENNELS AND CATTERY

We are a family run kennels and cattery. Having been in the animal care business for over 20 years we know the importance of your family friend and will provide a truly caring service. We can help as much or as little as you want. These are just some of the services we can offer:

Dog, cat and small animal boarding
Day boarding
Pet Export



Pet shop
Cuddle buddies
Wedding doggie services
Collection and delivery service
Grooming service
Special diets and medical need catered for

Whitehouse Kennels and Cattery

North Road, Eastertown, Lympsham, Somerset, BS24 0HS
Tel: 01934 750352 Fax: 01934 751348

www.whitehouse-kennels.co.uk

BLEADON VILLAGE LAUNDRY

at the entrance of Bleadon Mill
COLLECTION and DELIVERY

- Service Washes
- Dry Cleaning Agents
- Commercial Laundry
- Ironing Service
- Duvets & Quilts laundered

Call Trudy on **01934 814 133** for information
Email: raggettchelsea@aol.com
Hillside House, Bridgwater Road, Bleadon



design that's to the point.

- Graphic Pe'zaz provides services in all aspects of design
- Contemporary, Original and Effective Design

Talk to me, Leanne about how I can make branding, graphics and website design accessible to your organisation.



Telephone
07780 502 306



Website
www.graphicpezaz.co.uk



DOG GROOMING

DOGZONE

01934 815060

Accommodation Rd, Bleadon

thedogplace.co.uk www.hazegp.co.uk

Most makes of pet food supplied

Discount prices and free delivery

ADVANCED
City &
Guilds
Qualified



PC Doctor

PC problems, Upgrades
Internet connections

- No call-out fee
- 7 day local service
- Your computer fixed on site
- At your convenience
- Fully qualified
- Very reasonable rates

Tel: 01934 811 557

Mobile: 07867 642 542



Actionwork Film and Theatre

Anti-bullying and other
educational resources, workshops,
shows and films. Contact us on:

Tel: 01934 815163

Web: www.actionwork.com



MOBILE HAIRDRESSER

Shampoo & Set, Blow
Dry, Colour, Perms,
Scalp Conditions, Cuts
and Re-style.

*All in the comfort of your
own home*

Call Paulette
01934 813 100
07970 642 965

I am a hypnotherapist
and NLP practitioner
based in Brent Knoll.



**Lynn Ward
Hypnotherapy**

Change can happen in a trance

To learn how hypnotherapy can help you
make positive changes, please visit my website
at: www.lynnwardhypnotherapy.co.uk

e: lynn@lynnwardhypnotherapy.co.uk
t: 01278 760003

**To advertise
your local
business on
these pages**

contact the Editor on
01934 813 127
bleadon.editor@btinternet.com

**Advertising rates
start at just £15**

Business directory

If you want your Bleadon business to be included here free of charge contact:
bleadon.editor@btinternet.com

Actionwork Film & Theatre

PO Box 433, Weston-s-Mare BS24 0WY
Tel: 01934 815 163
www.actionwork.com
Film, theatre and anti-bullying solutions.
Local, national & international touring.

Anchor Inn

Bridgwater Road, Bleadon BS24 0AW
Tel: 01934 812 352
Traditional roadside local. Classic pub
menu, fun nights, sociable atmosphere.

Better Kitchens

Unit A, Purn House Farm, Bleadon
Tel: 01934 813 201
www.betteronline.co.uk
Suppliers at trade prices of fitted
kitchens, worktops, appliances. 3D
design service

Bleadon Post Office & Country Store

Purn House Farm, Purn Way, Bleadon
Tel: 01934 815 584
Post Office services, fresh produce and
everything expected from a village store.
Plus Tiffin Coffee House

Bleadon Village Laundry

Hillside House, Bridgwater Road,
Bleadon
Tel: 01934 814 133
Mob: 07979 794 478
Email: raggettchelsea@aol.com
Laundry, dry cleaning, ironing services
on your doorstep. We collect and
deliver.

Bridge Garage

Bridge Road, Bleadon
Tel: 01934 812 206
www.bridgegarage.com
Vehicle sales, full servicing all makes
and models. MOT. Attended fuel station.

Catherines Inn

Bleadon Road, Bleadon BS24 0PZ
Tel: 01934 812 275
www.hungryhorse.co.uk
Friendly local with quality family food,
sense of fun and affordable prices.

Chatterley Plumbing & Heating

The Croftings, Purn Way,
Bleadon BS24 0QE
Tel: 01934 644 539
Mob: 07887 768 877
Gas appliances, safety checks &
servicing, general plumbing. Gas Safe.

Dogzone

Accommodation Road, Bleadon
Tel: 01934 815 060
www.thedogplace.co.uk
Dog grooming, pet food supplied at
discount prices and free delivery.

Drink Tea Eat Biscuits

Graphic design studio providing creative
design and marketing solutions for local
businesses.
Tel: 01934 707012
www.drinkteaeatbiscuits.co.uk
Email: franky@drinkteaeatbiscuits.co.uk

Escape Hair & Therapy Salon

Longwood House, Bridge Road, Bleadon
Tel: 01934 813 400
Escape to Bleadon for a new you.

Garden & Household Services

Sunnycove, Bridgwater Road, Bleadon
Tel: 01934 813 100
Mob: 07813 175 423
davebaxter25@sky.com
Gardening, landscapes & property
maintenance services.

Andy Harper Joinery & Building Services

8 Coronation Road, Bleadon, BS24 0PQ
Tel: 01934 814962
Mobile: 07977 466 216
Email: Harper.A5@sky.com
Kitchens, Extensions, Wet Rooms

Huttons Fiat

Bridgwater Road, Bleadon BS24 0AW
Tel: 01934 813 700
www.huttons-fiat.co.uk
Fiat sales and servicing. New and used.
Traditional values with customer care.

Ian Dance Services

Purn House Farm, Purn Way, Bleadon
Tel: 01934 813 686
Mob: 07920 110 441
www.iandanceservices.co.uk
Gas heating and plumbing, heating
installation, servicing, repairs. Gas Safe.

Mager's Fuels

4 Whitegate Close, Bleadon BS24 0PW
Tel: 01934 813 596
Mob: 07582 860 517
magersfuels@yahoo.co.uk
Pre-packed coal, solid fuels, logs, bottled
gas, rock salt. Delivered to your door.

Phil Langdon Marine Artist

Chestnut Lane, Bleadon
Tel: 01934 813 223
Watercolour and Oil artist. Commissions
undertaken. Your cottage or home
painted.

Plastech Windows & Conservatories

10 Coronation Road, Bleadon BS24 0PQ
Tel: 01934 814 500
Mob: 07774 475 736
Local installer of high quality windows,
doors, conservatories, fascia, soffits &
guttering.

Plum Communications & PR

28 Bleadon Mill, Bleadon BS24 0BE
Tel: 01934 812 972
Mob: 07717 756 644
Email: info@plum-communications.co.uk
www.plum-communications.co.uk
Marketing, communications and PR
services for businesses and
organisations. Special rates for local
businesses.

Ritchie's The Sandwich Co

Units 3-7, Purn House Farm, Bleadon
Tel: 01934 814 899
Sandwiches, rolls and specialities.
Catering for functions and commerce.

Queens Arms

Celtic Way, Bleadon
Tel: 01934 812 080
www.butcombe.co.uk
Traditional village pub. Good range of
beers and wines. Freshly prepared food.

Somerset Windows

Longwood House, Bridge Road, Bleadon
Tel: 01934 815 518
Mob: 07970 630 118
Made to measure windows, doors and
conservatories using the finest materials.

Tree Services

Purn House Farm, Purn Way, Bleadon
Tel: 01934 814 941
Mob: 07855 911 046
Email: rjdtreeservices@hotmail.co.uk
Tree surgery and garden services - a cut
above. Call for free quote.

Waterhouse Electrical & Engineering Services

Lakeside Barns, Shiplate Road, Bleadon
Tel: 01934 813 803
Mob: 07860 597 463
Gas Safe., NICEIC Approve. Installation
& maintenance of gas and electrical
systems.

Wheels & Paint Repair

Mob: 07876 69 69 65
Mobile repair of paint chips and
scratches, alloy wheel repairs, valeting.

XS Computer Supplies

Unit 8, Purn House Farm, Bleadon
Tel: 01934 811 155
www.xscomputersupplies.com
Virus removal, repair and upgrades,
broadband setup, cartridges, CDR/DVD

**To advertise your local
business in Village News**
contact the Editor on **01934 813 127**
bleadon.editor@btinternet.com
Advertising rates start at just £15

Sociable Bleadon

Check the village notice boards for regular updates on the dozens of activities and events in the village.



Regular Coronation Hall events

Mondays

Bleadon Bridge Club 2-5pm
Exercise Classes** 7-8pm + 8-9pm
British Sugarcraft Guild 1st Mon 7.30pm
Bleadon Parish Council 2nd Mon 7.30pm

Tuesdays

Bleadon Ladies Club 2nd Tues 2.30-4pm
Short Mat Bowls 2.30-4.30pm Sept-May
Bleadon Brownies** 6-7.30 pm
Bleadon Guides** 7.30-9.00 (term time)
Bleadon Photographic Group 1st, 2nd, 4th, 5th Tues 7.30 pm (Sept-May)
Bleadon Horticultural Soc 3rd Tues 7.30 pm (Oct-June)

Wednesdays

Toddler Group 9.30-11.30
Yoga Class** 9.30-10.30
Bleadon Players/Rehearsals 7.30pm
Bleadon Pilates** 7pm

Thursdays

Bleadon Art Group** 10-noon
Bleadon WI 7.30 2nd Thurs
Bleadon Folk Dancing Group 8pm 3rd Thurs (Sept-June)
Bleadon Sugarcraft Club 7.30pm 4th Thurs

Fridays

Bleadon Friendship Club 2-4pm
Short Mat Bowls Club** 7pm (Sept-May)

Saturdays

Village Market 9-12.30 3rd Saturday

Sundays

Short Mat Bowls Club** 2.30 (Sept-May)

**in the Jubilee Room

See notice board for contact details
The Halls are available for hire by private individuals or organisations.

There's a reduced rate for Bleadon residents. Call Joanne Jones on **812370**.

Sunday Club

On the first Sunday of the month youngsters of any age can join Chris and Stevie for fun and games in the Church Meeting Room. Starts in the church at 10.15 and usually goes through until about 11.30.

Bleadon Ladies Club

Meets the second Tuesday of the month in the Coronation Hall at 2.30pm.

We're looking for more new members, so come and join us for an afternoon and see what you think. I'm sure you will enjoy it. We're very friendly and have some fascinating speakers.

June 12

Back Packing at 65 Mrs Audrey Nuttall

July 10

Always very popular as it is our **Homespun** meeting. We're having a Bring and Buy sale, cream tea and a few surprises. We have lots of laughs and fun at this meeting.

August

No meeting

September 11

Childhood Reflections of a Farmer

Peter Tinney

October 9

Diaries of Passengers on SS Great Britain

Do come and give us a try, you will not be disappointed. For only £1. A speaker a free raffle tea and biscuits or cake, a quiz and good company.

For information call Barbara on 814362

Friendship Club

We have some very interesting speakers coming to the club during coming months. Plus various musical items, quizzes, raffle and more. In June we have our Strawberry Tea, so do come along, we are just a small group of people waiting to welcome new ladies or gentlemen.

Friday afternoons 2.15 - 4pm. £1

Audrey Lee

Monthly Village Market

In the Coronation Halls on the **third Saturday of every month** From 9am - 12.30pm. Dozens of stalls packed with delights. The usual refreshments and a chance to catch up with friends.



Baby & Toddler Group

In the Coronation Hall **Wednesday mornings** from 9.30 - 11.30 during term time. Open to all pre-school children in the village and the surrounding area.

Contactus welcome party

On **Wed 20 June** at 6.30pm in the Coronation Hall we welcome all residents who have **recently moved to Bleadon**. It's a chance to meet other villagers and find out what goes on. If you are new here you are invited to come along for a glass of wine and chat.

More social events on next page

Fresh Local Produce. Cheeses. Jams, Honey & Preserves. Somerset Beef. Fairtrade. Crafts. Handmade Jewellery. Books. Collectables. Bric-a-brac. Cards. Gifts. Refreshments & friends

Bleadon Village Monthly Market & community cafe

**SAT
16
JUN**

**SAT
21
JUL**

**SAT
18
AUG**

**SAT
15
SEPT**

**in the Coronation Halls
from 9 to 12.30**

Call Joanne on 01934 812 370 for more info

We are well blessed with over 20 clubs and social groups here in our little village. If you would like to join in the fun just pop along and introduce yourself. You will always be welcomed with a smile and a warm handshake. Many groups meet in the Coronation Hall. Check notice-boards.

Sociable Bleadon

Bleadon Youth Club

Open to young people aged 10 to 18yrs from 6.30 -9.30pm.

Tuesdays: projects and creative activities £2 per session.

Thursdays: open social access, games and activities £1.50 per session.

See the BYC notice board for full programme details.

Mon 4 June fabulous Family Fun Day

12-6pm. Gladiator jousting, face painting, graffiti art, bouncy castle, street dance, push carts, BBQ, games.

Thurs 7 June Holiday Activities Day.

9.30-12.30 Italian cooking £2.

12.30-1pm a light Italian Lunch £1

1.30-4.30 Clay art + indoor sports £2.

Mothering Sunday

on March 18th was celebrated at St Peter and St Paul Church by an informal service conducted by the Rev. Steve Hartree,

together with lively contributions from mothers and children. Following this the congregation were invited to visit the Church Room where Children's Sunday Club organisers Chris, Tracy and Stevie, welcomed us and, assisted by club



members, provided tea and cake. The Sunday Club meets regularly on the first Sunday of each month; coinciding with the 10.15 morning service.



Bleadon Horticultural Society

The **Spring Flower Show** featured over 280 exhibits from the 60 exhibitors of all ages in the Coronation Hall on Saturday March 10th. There was a noticeable increase in the homecraft, photographic and handicraft sections while the junior classes also saw a large overall number of imaginative exhibits. Libby Lockyer won two cups with John



Harris senior and son John picking up five trophies between them while in the junior section the Lance family

scooped two cups. Other proud winners included Pete Williams, Penny Skelley and Orson Fuller.



Diana Redfern's illustrated talk on **growing herbs and their uses** proved most interesting and informative with many useful tips being shared with everyone present. We learned that lemon balm could stop bees swarming, teasel can fight Alzheimer's, various herbs can be grown amongst vegetables to deter pests and most herbs like a sun spot.

The coach trip this year will see us travelling to **Ottery St Mary nursery and Bicton gardens in Devon on Tuesday 17 July**. For more information call me on 813152

Schedules for the **Summer Flower Show** on Saturday September 1st should be available from the village shop/Post Office, the church porch or committee members.

Happy Gardening

Chris Cudlipp

Bleadon WI

The demonstration was entitled "How to feed a Vegan and still enjoy the evening". **Master Chef, Selwyn Channon** entertained around 50 WI members at our April meeting with his mischievous wit- often at the expense of our neighbouring villages - whilst preparing a delicious three course meal capable of satisfying the taste buds and appetites of the most confirmed meat eaters among us. With ingredients such as pomegranite seeds and lavender sugar, this wasn't a run of the mill supper, but the end results were enjoyed by all. Samples of Selwyn's menu of Rice Noodle Salad, followed by Spicy Vegetables with Quinoa, with a fruit sorbet laced with vodka to follow, were greedily devoured by all and the hall was filled by murmurs of 'I must try that'. Let's hope we can book him again.

Look out for a plethora of **plant climbers, made from willow**, in Bleadon's gardens after our demonstration from James of Musgrove Willows / Abel Willow. He made it seem easy and effortless and then donated the finished product to our raffle - we raised a few extra pennies in ticket sales that week. Why not check out the pictures at bleadonwiblogspot.co.uk.

In February, Bleadon WI was very lucky to have a visit from Lady Carnarvon - **The real Lady of Downton Abbey** - at Batch Farm Hotel, Lympham. The event, instigated by Bleadon WI member Heather Gay after her disappointment at missing out on a National WI event prompted her to email Lady Carnarvon herself, was attended by nearly 200 ladies from local WIs and their guests.

We were also very fortunate to be given an insight into Downton Abbey, how the series came about and what it was like to have the crew and actors in their home.

As a result Bleadon WI were able to **donate a further £2,000** to the Children's Hospice South West, our donation now totalling £5,700.

Sociable Bleadon



Out of the Village... People

Andy Harper, John Stokes, Jonny Giles & Iain Hall Scott eventually left the village on a very wet Thursday 3 May to take part in **Scumrun 2012**. Within 200 yards of leaving the Queens they had to stop and remove the wheel-arches on the £500 Subaru. Four lads and camping gear was too much for the suspension! They registered in Thruxton just in time to take an overnight ferry to Europe their route was unknown until they made it to each check point and get instructions. Within minutes of arriving in France they collected their first speeding ticket. Then broke down and had to hire a car to complete the 2500 mile journey. All for a good cause - raising money for Sparks - a leading children's medical research charity.

Bleadon Players 24 years treading the boards

In 1988 a group of like-minded villagers got together to discuss the possibility of forming a drama group. Coronation Hall was hired and with the first production of songs and sketches called *Here we are and Here we are again*, opened its doors to a startled village and thus The Bleadon Players were born.

The first pantomime in 1990 was *Cinderella*, followed in the Spring by another review called *Show Time*. In 1998 the tradition of producing two plays and a pantomime each year began and so far we have performed 22 pantomimes and a large selection of comedies, farces and straight plays, including works by Oscar Wilde, Noel Coward and Alan Ayckbourn.

In 2007 we were persuaded to enter the *Avon One Act Play Festival* and to our utter astonishment, we won. The other drama groups were equally astonished as no-one had ever heard of us.

To be a member of the Bleadon Plays is like belonging to a unique family. We welcome anyone who is interested in what we stand for – even if they live in Weston – and most of us do! We discourage Prima Donnas and value everyone involved in each production.

We choose our plays by asking how many players want to be in it, and then search for a suitable script with the right amount of cast.

We build our sets together, heave scenery around, put out chairs and sometimes tables, for our audience, put them away again and – oh yes – we “act”. It's our hobby – we are, The Bleadon Players!

You may recognise some stars from the past in this selection of old pics





Royston Walters continues his revelations about Bleadon villagers with an insight into Jeff Davis...

Village people



At the time of writing it is Easter, daffodils are everywhere, the shops are full of chocolate eggs and, of course, hot cross buns, what better time to talk to a man who has baked millions of them.

Jeff Davis was chef, baker and confectioner for more than fifty years and for 25 of those years he practiced his art in Weston. He moved to Bleadon with wife Beryl and daughter Joanna in 1968 and was soon recognised as the doyen of his profession, his wedding, birthday and Christening cakes were celebrated as among the best anywhere.

Born to bake

Jeff was born in Malvern, Worcestershire in 1923, one of seven children where father worked for Stallards the wine merchants looking after the cellars of several large estates thereabouts. The family lived right next door to a bakery, he was born, literally, with the smell of baking in his nostrils.

In those days hot cross buns were only baked for the two weeks before Easter and the burden on the bakeries was to produce this delicacy in great numbers in addition to the usual fare of breads, crusty rolls and cakes, it was a case, prophetically, of 'all hands on deck'. Jeff as a child used to help at this busy time at the bakery next door by putting



the crosses on the buns just prior to the huge trays being taken to the ovens.

His first love however, was music. The headmaster of the local school had managed to win a sponsorship scheme from a Czechoslovakian musical instrument manufacturer where Violins were offered to pupils at a subsidised price of £2/10s each, a still not inconsiderable sum but families could pay at the rate of 1/6d per week. 1/= for the instrument and 6d for a lesson. Jeff excelled and his proudest moment as a young man was being chosen as a soloist at a large concert in his home town famous for its associations with Sir Edward Elgar. He played the 'Londonderry Air' to a huge, perfectly hushed audience which, exhilarated, burst into rapturous applause on its completion.

A sponsorship scheme in the early twenties was a sign of advanced thinking and Jeff's headmaster was also a keen advocate of equality of the sexes, girls were expected to learn about the new fangled subject of electricity and boys were expected to learn domestic skills. Jeff was a 'natural' in the kitchen, he had an original and unique talent and when the time came to leave school at 14 his headmaster, who had a connection with the County Hotel in the town, recommended him for a job in the kitchens. It just so happened that the

chef at this establishment was a Frenchman named Verando and universally regarded as the best in the country. Somewhat unusually, for a man with such a prodigious reputation he was also a tolerant, kind man and a great teacher, Jeff loved working with this inspirational man and thus the solid foundations of Jeff's career were laid.

All at sea

During this time the war had started and at 17, Jeff with his best friend volunteered for the Royal Navy. Up until this time the youngest men to be recruited were 21 but with the British fight back gathering momentum Jeff was in the first batch of 18 year olds to be called up. He did his basic training at a Butlins holiday camp in north Wales. After six weeks of mostly 'square bashing' plus some rudimentary instruction in firing a rifle, he was deemed fit to meet the might of the German Kriegsmarine and everything the seas could throw at him. At least the Royal Navy recognised his skills when he was posted, as a temporary replacement, to a 'Flower Class Corvette' as a ward room chef. The Corvette was an escort ship designed as a depth charge platform and minesweeper and although intended for coastal patrols ended up in the Atlantic theatre and Russian convoys, the design of the ship's hull meant that it would roll 'on a field of

wet grass' never mind the rough, roiling seas of these northern climes. Jeff had never been on the water before! HMS Lotus with her new chef sailed out of Greenock, Scotland in October 1942 and by the time she had cut her swift, hissing path into the Firth of Clyde the seasickness, which was to beset the new hand for the next four days, set in. Hitherto, Jeff had been used to a cooking range which maintained a level surface but now had to produce meals in a galley which could be tilting 45 degrees up, down or side to side while trying to keep his balance and persuading the contents of his stomach to abide by the law of gravity.

Escort duties

The camaraderie of his shipmates and a daily 'dose' of 1:1 rum soon helped him find his sea legs and he became an effective member of a fighting ship. The North African campaign was in full swing and 'Lotus' was lead ship in a flotilla of escort vessels sent ahead to protect convoys from mines and submarines - a precarious duty but Montgomery's 'Operation Torch' to defeat the Axis forces needed a constant supply of men, machines and fuel.

U-660 - Das Boot

On Jeff's maiden voyage they entered the dangerous passage through the Bay of Biscay and it seemed intent on justifying its reputation for stormy weather. This is Jeff's first encounter with an 80 foot wave; on the positive side, they are not far from the U-Boat pens of Saint-Nazaire and La Rochelle but submarines cannot attack in these conditions. The convoy reaches the Mediterranean and on November 12th makes contact with U-boat 660 and when the ship is at action stations even the chef has his fighting duties, Jeff arms the depth charges and sets the timing delay. 'Lotus' attacks and the U-boat is fatally damaged, it limps to the northern Algerian coast and is scuttled by its crew, HMS Lotus's captain sends an erudite signal to the Admiralty about the sinking which makes the national newspapers. To those who are aware that Jeff is serving on this ship he becomes a hero.

On his return from the Med' he is sent to America as part of the crew to pick

up a tank transporter supplied by our allies, it has the capacity to carry 25 Sherman tanks and land them in shallow water. They make their way to north Africa as part of a huge convoy, the vessel carries a smaller, troop landing vessel on top but is empty of tanks, these it will pick up in Gibraltar so as ballast it is loaded to the gunwales with Baked Beans! It is a very large flat bottomed ship with a 'blunt' bow and the three week voyage becomes very uncomfortable in high seas as the craft has to 'ride' the enormous waves instead of cutting through them as a sharp bowed ship would do, in addition the voyage takes three weeks as a convoy can travel only as fast as the slowest ship. This is all part of the 'longest, largest and most complex' naval battle in history; as Winston Churchill said "The Battle of the Atlantic was the dominating factor all through the war. Never for one moment could we forget that everything happening elsewhere, on land, at sea or in the air depended ultimately on its outcome". During this time 3,500 merchant ships and 175 warships were sunk with the loss of 30,000 men, this was the background against which Jeff lived and worked, crisscrossing the Atlantic for the duration of the war.

Homecoming to Worcestershire

Jeff served six years in the navy then returned to Worcestershire and baking. It is here where he is part of a team baking 1 million hot cross buns in the two weeks before Easter, on the two days before Good Friday they baked nothing else! He is busy doing what comes naturally to him but he misses terribly the camaraderie of the navy and regrets leaving.

Meeting Beryl brings with it a soothing balm, they marry in 1952 and a new phase begins. Through a series of mergers Jeff finds himself a confectioner at a large bakery in Worcester, confectioners start two hours later than bread makers - at 6am and a twelve hour day is the norm. They are keen to start a family and this is where problems surface.

Beryl has two miscarriages before a specialist diagnoses a hormone deficiency. The medics say the condition is treatable and Beryl again becomes pregnant but they are warned

that there are still dangers and great care must be taken. Beryl is confined a month before her due date in a Worcester hospital but complications still arise, it is a dangerous time and it looks at one point as though a catastrophe is approaching with Jeff facing a 'Mother or child' decision. There are mad dashes at all hours to the hospital, it is a time of fretting with long nights and little sleep but in the end..... all's well that ends well and Joanna is born in 1958.

To Bleadon via Weston

The family move to Weston in 1963, Jeff takes a job at 'John's Bakery' in Winterstoke Road and, by and by, his reputation as a master of his craft grows, in 1968 the family move to Bleadon.

After six years, managerial changes at the bakery do not suit Jeff and he and a fellow employee go into partnership and open a shop in the Boulevard but after four years the strains of partnership begin to show and Jeff moves to Astill's bakery. He is there for five years before being offered the job of Catering Manager at the Winter Gardens with the brief to 'sharpen' the operation which had been run down somewhat. He turns the business around and stays until his retirement.

For Jeff, all this period was apple blossom time, a few showers of course but nothing dimmed the bright pinks and greens of this close knit, loving family, in retrospect, Jeff for all his life has been doing what has been expected of men since the beginning of time - to feed his loved ones and when necessary, to fight to protect them.

Now approaching 90, a major personal upheaval has caused his life to turn keel upwards, and he finds himself in a new theatre of operations, his enemies now are confusion and loneliness and the seas have a heavy swell. He fights however, with the same valiant spirit that brought him through the displacement, the fear and the fatigue of a world trampled upon by war. My generation has never been called to save the country, I can't tell you how humble I feel in the presence of such a man and of the devotion we owe to his kind.

Bleadon Parish Council meets on the **second Monday of the month** at 7.30pm in the Coronation Hall.

An Agenda is published on the Parish notice boards and the website at least three days before the meeting.

We welcome parishioners to attend meetings and get actively involved in things that matter to Bleadon.

You will be heard

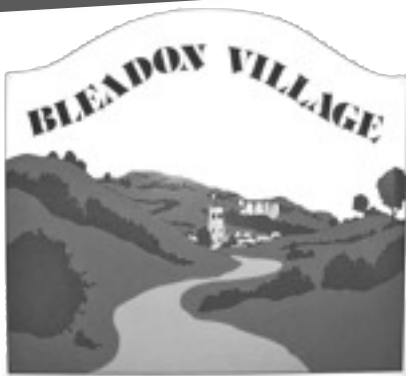
Parishioners' Voice is your opportunity at the start of each meeting for you to talk briefly to the Council about any issues you have.

If there is a particular issue you would like to raise **please let the Parish Clerk know by the Friday before the meeting.** This will give him the chance to collect the most up-to-date information available.

NEW

email address for the Parish Clerk

parishclerk@bleadonparishcouncil.gov.uk



Send all correspondence about Bleadon Parish Council matters to the Parish Clerk: Bruce Poole, Bleadon Parish Council, Rooftops, 10 South Street, Burnham-on-Sea TA8 1BS
Tel: 07887 802 922

parishclerk@bleadonparishcouncil.gov.uk

Visit the Bleadon parish website at:

www.bleadonparishcouncil.gov.uk

May Day Fayre...

It is the day after the annual May Day Fayre. What a day it was!

I am absolutely, again, overwhelmed by the help and support that everyone gives this event in aid of the church funds. A heartfelt "THANK YOU" to you all. Preparation for the Fayre starts months in advance with the booking of the Jazz Band, the Morris Men, and the Bouncy Castle etc. Then there is the collection of the Bric-a-Brac from all over the area. Recruiting help for the games and stalls is always a task but everyone rallies around and, on the day, help is invariably available.

This year we started the sorting, cleaning and pricing of the Bric-a-Brac early with a team of helpers in the church room with much good humour and mugs of tea under the critical eye of Mary. What a lot of bargains there were!

Unfortunately, the field was water-logged and we could not use it for parking which meant that we could anticipate being down on numbers as parking, these days, is paramount in staging any event. I would like to thank Mary for offering her field every year for the parking and it is very much appreciated. Monday morning, at the church room, Tony was there with his trailer and, between some heavy rains; we managed to get the games and tables down to the car park. We had already taken the gazebos down the day before so more helpers were already putting them up. I would like to congratulate all those who worked so hard to make the day a success in spite of the weather. I do not like mentioning individuals as the page would be full of names. You know that our thanks are sincere and that the Fayre would not be possible without you.

Your Bleadon Parish Councillors

Brian Gamble	Ashdene, Bleadon Road, Bleadon	Tel: 811 709
Robert House	Purn House Villa, Purn Lane, Bleadon	Tel: 815 588
Trevor Marshall	15 Bleadon Mill, Bleadon	Tel: 811 548
Clive Morris (Vice Chair)	20 Bleadon Mill, Bleadon	Tel: 811 591
Miles Orme	Purn House, Bleadon Road, Bleadon	07989 410767
Keith Pyke	8 Whitegate Close, Bleadon	Tel: 813 127
Mary Sheppard	Littlewood, Bridgwater Road, Lympham	Tel: 812 921
Penny Skelley (Chairman)	Mendip Croft, Celtic Way, Bleadon	Tel: 815 331
Pete Trevitt	17 Bleadon Mill, Bleadon	Tel: 813 391

Bleadon Village News is published quarterly by Bleadon Parish Council in March, June, September and December.

Contributions to this magazine are very welcome, so long as they are about Bleadon or can directly benefit its residents. Please ensure that your editorial or advertising material reaches the editor at least three weeks before publication.

Send your Village News contributions to: Keith Pyke, Village News Editor

8 Whitegate Close, Bleadon BS24 0PW

bleadon.editor@btinternet.com Tel: 01934 813 127

Unless otherwise stated the opinions and comments expressed in this publication are those of the editor or contributor and may not be those of Bleadon Parish Council.

We aim to provide a copy of this magazine free to every household and business in Bleadon. Additional copies are usually available from the editor. We are grateful to the band of volunteers who deliver this newsletter to households. If you can help let me know.

The copy deadline for your contributions to the Autumn edition of Village News is Friday 24 August 2012.

inside if wet

Some were there from dawn 'til
closedown, working hard and getting
soaked to the skin. I hope you had a
nice hot bath when you got home.
Finally, I would like to thank all those
who paid their 50p for the programme
at the gate and came and spent the day
with us. I trust you all had a wonderful
day and I hope you will all support the
companies who very generously
advertised in the programme, as they
supported us.

As you may know our lovely village
church of St Peter and St Paul relies
heavily on the May Day Fayre to cover
the cost of the general
maintenance and general
running repairs. So every
penny counts and you
know it goes to a good
cause and is well used in
supporting this valuable
village asset.

Very many thanks.
Brian Drinkwater





Celebrations

Saturday 2 June to Tuesday 5 June

SATURDAY 2 JUNE

Noon 'til 3pm **Pork & Cider** in the Park. Delicious roast pork baps and Thatchers cider to refresh Scarecrow hunters.

Bleadon **Scarecrow Trail Map** will be on sale in the car park Saturday to Monday 11am - 4pm

MONDAY 4 JUNE

Afternoon **Cream Teas** in the Coronation Hall (not for calorie counters)

MONDAY 4 JUNE

Bleadon parents can bring their children (under 16 on the day) along to the car park to collect their **Commemorative Bleadon Jubilee coin**. A unique celebration of Her Majesty's 60 years on the throne. Penny will be handing out the gifts from 12 until 4pm.



This Diamond Jubilee weekend join in the Bleadon fun and create a Royal scarecrow in front of your home (or on parish council land).

In celebration of the **Queen's Diamond Jubilee** this year's theme for the Scarecrow Fest is **Kings and Queens**.

To help the Jubilee celebrations along we are hoping to see **scarecrows on show throughout the village for the whole four day Jubilee holiday 2 - 5 June**

Everyone is free to join in with their own wacky scarecrow ideas

SATURDAY 2 JUNE

RAFA Band concert with buffet supper in the Coronation Hall at 7.30pm

SOLD OUT

SUNDAY 3 JUNE

Special Jubilee celebration service at 10.30am in our parish church of St Peter & St Paul

MONDAY 4 JUNE

Bleadon Youth Club presents

A fabulous Family Fun Day

12 to 6pm
Inflatable Gladiator jousting, Bouncy castle, Face painting, Push-carts, Street dancing, Graffiti art, Games & stalls, badge making, BBQ and much more.

**GET CREATING
YOUR SCARECROW
AND START SHARING
THE SMILES**