

Bleadon News

Issue 125

March 2023

Top stories:

Page 2:

Farewell to Bruce

Page 4-7:

Bleadon budget

Page 9:

Last night at the
Queens

Page 16-17:

May Day Fair

Contact the editor:

Ellie Young

*Bleadonnewseditor
@gmail.com*

Thank you to Mark
Frisby for this beautiful
front cover image.



Letter from the Chair

By Kirsten Hemingway

Firstly, I want to thank our Clerk for his service to the Parish Council as we have accepted his resignation in January. We have been very lucky to have had such an experienced Clerk and Bruce has served this community twice in the time that I have been here. He will be sorely missed.

It was a challenging month as we aimed to make sure the proper processes were in place to move forward and a lot of the discussions had to be held in 'part 3' of our Parish Council Meetings which is not open to the public.

This was because there was a risk that personal information would be shared. I want to thank the people of the parish for their understanding during this time, we are very lucky to have such a good relationship with so many of you.

As we go about the process of finding a new clerk we will be looked after by our Locum Clerk who is Liz Shayler (CiLCA) from the parish of Banwell. Liz is an excellent Clerk and will do a great job but as a Locum her hours will be limited in order to keep the costs within our budget. This means that some of the services we can provide in terms of answering lengthy and detailed questions may not be able to be performed until after the appointment of the new clerk.

Also, at this time we have to prepare for our 2022 - 2023 Accounts process, leading to the next AGAR. With this in mind we wanted to appoint a professional to make sure a good and independent review was carried out. We have appointed Nina Flint as our financial representative. Nina will be working closely with Liz and Councillor Ann Davies who produced such an excellent budget.

Finally, we have some issues to resolve and questions to answer on our last two AGAR reports, which means we need to retain the support of Bruce for one more month. We are very grateful for his support and help throughout February.

Bruce will finally step away from all duties at the end of February so you will have time to wish him well in his next ventures. I am sure the residents of Bleadon will be understanding during the recruitment process, and we will do our best to complete the process as soon as we can without compromising on the quality.

We have set up two new working parties within

the Parish Council and we welcome members of the public to join them and get involved in the local governance.

The first is the communications working party, this is led by Cllr Graham Getty and will support the residents to communicate with us and make sure we are getting information to residents. This team will be looking after our website and social media channels, as well as making sure we have communicated all the decisions we make and the basis for them.

The second working party is specifically for the budget. This group will be looking at how the budget information is communicated and the purpose of this group is to assist Councillors in their understanding of the accounts to improve monitoring throughout the year and to have an informal discussion regarding the budget for 2023/24 and beyond.

This team is led by Cllr Ann Davis, who worked tirelessly with Bruce on the most recent Budget and has done an excellent job. We hope to be able to find grants and bring new money into the parish so we can support initiatives outside of the precept. Anyone who has expertise in this area, or who has identified any funding which may be relevant, will be welcome to come and meet with us and support us to put together an application.

We are very pleased to note the new equipment in the play area. I have seen many young people really enjoying this facility and it makes use of the area now.

Bleadon in Bloom planted more than 100 trees—each one is dedicated to someone under 16 in the parish and the family can help their young person to look after the tree. The plaques are beautiful and have been given to the children and attached to the trees.

The budget for Bleadon in Bloom this year has been slashed but the undeterred bloomers have decided to enter the competition anyway with the theme to be "Bleadon, Blooming Nothing – an austerity Bloom" which will be delivered mainly by volunteers growing plants and doing work to support habitats and the community. If you want to help or have an idea about something we could do, then get in touch with me.

Due to the current economic situation, we have cut the budgets for everything in the village to make sure the precept is kept as low as we can without having a deficit budget and using the reserves. This does mean that we will not be doing any upgrade of the toilets or the Jubilee Garden unless we can come together as a community and apply for grant funding.

April is the Annual Parish Meeting – this is an opportunity for the community to come together. We still



BLEADON PARISH COUNCIL MEETINGS CALENDAR

All meetings take place in the Coronation Hall except where stated

Monday 13 th March 2023 7pm	Parish Council Meeting
Thursday 13 th April 2023 7.30pm	Annual Parish Meeting (in the Jubilee Hall)
Thursday 11 th May 2023 7.30pm	Annual Meeting of the Parish Council (AMPC) (in the Jubilee Hall)
Monday 12 th June 7pm	Parish Council Meeting
Monday 10 th July 2023 7pm	Parish Council Meeting
Monday 11 th September 2023 7pm	Parish Council Meeting
Monday 9 th October 2023 7pm	Parish Council Meeting
Monday 13 th November 2023 7pm	Parish Council Meeting
Monday 11 th December 2023 7pm	Parish Council Meeting (Budget Meeting)
Monday 8 th January 2024 7pm	Parish Council Meeting (Precept Meeting)
Monday 12 th February 2024 7pm	Parish Council Meeting

The agenda and associated paperwork is available the Wednesday before a Monday meeting and can be found on our website www.bleadonparishcouncil.co.uk

Email: parishclerk@bleadonparishcouncil.co.uk

Tel: 07453 358318

have the hall for the night, and we will be opening the facility for all the groups in the Parish to come together and meet one another and the parishioners. This is your meeting and we hope that you will take advantage of the opportunity to meet and chat with each other and to find out about groups. We are hoping it will be as successful as the Contact Us meeting and that many of you will come. We will be looking for volunteers to run a bar/café and also for people to speak about their groups for a few minutes each. If you want to get involved and help pull this together then please send a note to the clerk in the first instance.

May will be the Coronation of the King and we hope to join you in celebration of this with all the other groups in our wonderful community.

This Parish Council will be reformed by election in May 2023. This is the time to put yourself forward to join. There are up to 9 places on the Parish Council and if we get 9 or less those individuals are elected unopposed so we would love it if there were a good number of people and we were able to run an election. – Come on Bleadon – join us!

Name	Email
Kirsten Hemingway	Kirstenhemingway@bleadonparishcouncil.co.uk
Gill Williams	Gillwilliams@bleadonparishcouncil.co.uk
Mary Sheppard	Marysheppard@bleadonparishcouncil.co.uk
Huw Boyce	Huwboyce@bleadonparishcouncil.co.uk
I D Clarke	Idclarke@bleadonparishcouncil.co.uk
Ann Davies	Anndavies@bleadonparishcouncil.co.uk
Sara Garrett	Saragarrett@bleadonparishcouncil.co.uk
Graham Getty	Grahamgetty@bleadonparishcouncil.co.uk

May Elections 2023

Are you passionate about your community? Do you want to help make a long-lasting change? Do you have innovative ideas for the council?

If this is you, then we need you! We need people from all backgrounds and experiences who reflect their community to put themselves forward for election.

What do local councils and councillors do?

Local councils and councillors make a difference to local people's quality of life. They are passionate about their communities and seek to make a change to help improve their residents' lives.

Councillors are elected to represent the local community, so you must either live or work in the council area. Becoming a councillor is a rewarding experience. A councillor's role can include developing strategies and plans for the area, helping with problems and ideas, representing the community and many more.

To find out more about what it means to be a parish councillor, visit www.nalc.gov.uk/elections

To download a nomination pack and to start your journey towards becoming a councillor, visit www.n-somerset.gov.uk/council-democracy/voting-elections/upcoming-scheduled-elections/

Budget 2023-2024

BLEADON PARISH CO

CODE	HEADING	Budget	Actual	Budget
		20-21	20-21	21-22
	INCOME			
1076	Precept	50,000	50,000	50,000
1090	Bank Interest	75	32	80
1200	Youth Club Rent	50	50	50
1100	Advertising	1,000	1,450	2,000
1205	Allotments	270	274	270
	Council Tax Support Grant	0	0	0
1115	Miscellaneous Income	0	0	0
1116	Church Clock	100	60	0
	Village Orderly Grant	160	0	0
	Neighbourhood Grant	0	0	0
	Bleadon in Bloom	0	0	0
1800	Covid-19 Group	0	3,000	0
1801	Small Business Grant	0	9,000	0
1802	CIL	0	0	0
	Net VAT	0	1,407	0
		51,655	65,273	52,400
	Staff	16,850	17,616	20,250
	Grants	500	150	500
	Administration	12,359	12,470	14,140
	Open Spaces	21,275	22,404	25,967
	Projects	6,000	557	7,780
	VAT	40,134	35,581	68,637
		11,521	29,692	-16,237

By Cllr Ann Davies

At the council's meeting on 16 January 2023, the budget for 1 April 2023 to 31 March 2024 was agreed. As a result, the precept is £64,653.00 to cover expenditure over the course of the whole year. The tables below illustrate how the budget is made up.

COUNCIL - BUDGET 23-24					
Actual	Budget	To date	Oct/Mar	Total	Budget
21-22	22-23	22-23	22-23	22-23	23-24
50,000	54,000	54,000	0	54,000	64653
34	160	135	50	185	200
50	50	0	50	50	50
1,755	2,000	805	1,200	2,005	2,000
250	250	31	225	256	290
0	0	0	0	0	0
0	0	48	0	48	0
0	0	3,432	0	3,432	0
161	161	0	0	0	0
0	0	0	0	0	0
0	0	0	0	0	0
0	0	0	0	0	0
0	0	0	0	0	0
2,387	0	0	1,325	1,325	0
1,918	0	527		527	0
		-70			
56,555	56,621	58,908	2,850	61,828	67193
20,483	26,300	12,699	13,269	25,968	27,200
0	0	0	0	0	0
13,269	13,378	7,768	5,006	12,774	14,802
27,044	25,880	12,641	11,182	23,611	22,191
4,429	0	2,915	5,000	7,915	3,000
2,372		154			
67,597	65,558	36,177	34,457	70,268	67,193
-11,042	-8,937	22,731	-31,607	-8,440	0

Budget 2023-2024

Bleadon Parish Council 2022-2023

Summary Receipts and Payments for Year Ended 31st December 2022

Last Year Ended 31st March 2021		Current Year Ended 31st December 2022
	Receipts	
34.21	Interest Received	134.67
<u>34.21</u>	Sub Total	<u>134.67</u>
	Operating Income	
50,000.00	General Income	54,000.00
2,671.09	Miscellaneous Income	312.50
0.00	Church Clock Donations	3,523.00
349.34	Rents	261.50
0.00	Village News Advertising	985.00
50.00	Bleadon Covid-19 Group	330.00
2,386.86	Community Infrastructure Levy	1,324.97
2,443.21	VAT Data	526.56
<u>57,934.71</u>	Total Receipts	<u>61,398.20</u>
	Running Costs	
25,108.63	Staff Costs	16,816.02
13,269.00	Administration	9,961.60
50.00	Grants	50.00
27,043.82	Open Spaces	19,473.49
4,429.18	Special Projects	3,128.05
2,345.96	VAT Data	392.97
<u>72,246.59</u>	Total Payments	<u>49,822.13</u>
	Receipts and Payments Summary	
<u>78,500.82</u>	Opening Balance	<u>64,188.94</u>
57,934.71	Add Total Receipts(As Above)	61,398.20
136,435.53		125,587.14
72,246.59	Less Total Payments(As Above)	49,822.13
<u>64,188.94</u>	Closing Balance	<u>75,765.01</u>
	These cumulative funds are represented by:	
0.00	.	0.00
0.00	.	0.00
0.00	.	0.00
7,525.74	Current Account - Unity	18,958.64
56,663.20	Unity Trust Bank - Deposit	56,806.37
<u>64,188.94</u>		<u>75,765.01</u>
	Reserve Balances are represented by:	
-14,311.88	Current Year Fund	11,576.07
13,559.82	General Reserves	27,454.94
3,500.00	EMR - Staff Contingencies	3,500.00
400.00	EMR - Pensions	400.00

Bleadon Parish Council 2022-2023

Summary Receipts and Payments for Year Ended 31st December 2022

Last Year Ended 31st March 2021		Current Year Ended 31st December 2022
3,350.00	EMR - Election	3,350.00
9,560.00	EMR - Special	9,560.00
5,500.00	EMR - Church Grounds	5,500.00
19,250.00	EMR - Contingency	1,553.00
4,000.00	EMR - Coronation Hall	4,000.00
3,121.00	EMR - Neighbourhood Plan	2,711.00
1,000.00	EMR - A370	1,000.00
2,000.00	EMR - Bleadon Children's Play	2,000.00
1,000.00	EMR - Village Celebrations	0.00
1,000.00	EMR - Village Covid Group	900.00
2,260.00	EMR - Re-Gilding Church Clock	2,260.00
9,000.00	EMR - Business Grant	0.00
64,188.94		75,765.01

Parish Council Tax

Parish Council Tax Element for properties in each band (£ per property)

Band	Amount per annum
A	78.62
B	91.73
C	104.83
D	117.94
E	144.15
F	170.35
G	196.56
H	235.87

Mark Howe

Gardening Services

9 Malvern Road, Weston

GET IN TOUCH TODAY!

01934 413594

07773 272003

Regular grass cutting

Turfing

Hedges and trees cut

Fence painting

Fences erected or repaired

Power washing



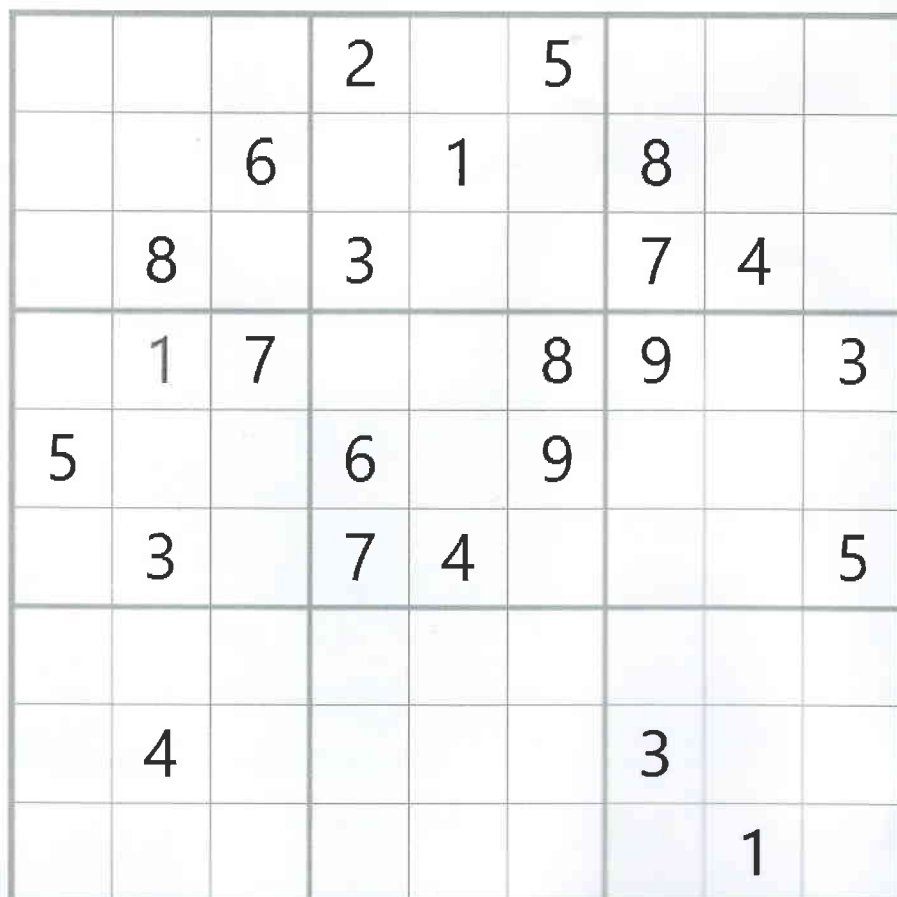
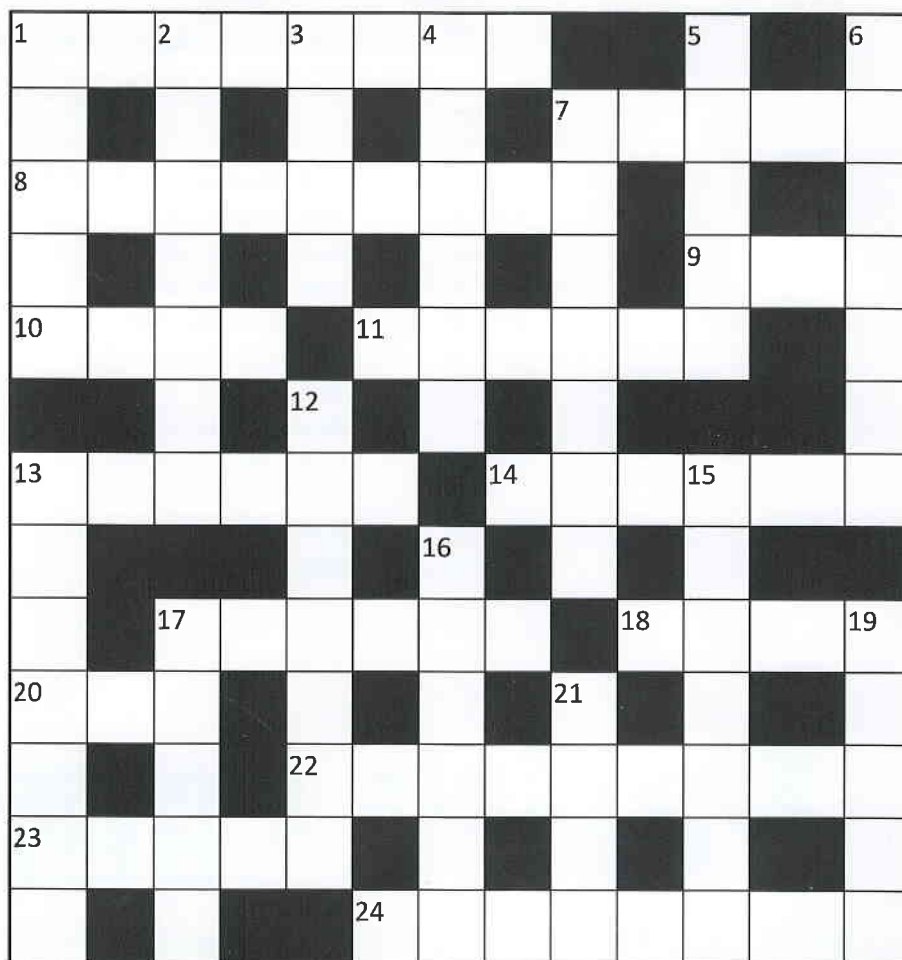
George's crossword

ACROSS

1. Man's hill is in charge. That's old. (8)
7. Maybe a belt to eat off. (5)
8. Coloured water once parted by Moses. (3, 3, 3)
9. Container for Anglo-Australian ashes. (3)
10. Put down like eggs. (4)
11. Acquire a mushroom in part of play. (6)
13. Clips quiet listeners. (6)
14. Search about by small rodent. (6)
17. Routed around. (6)
18. Hint. This is one. (4)
20. Court. (3)
22. Beer ingredient added to whisky in children's game. (9)
23. Steal the smallest perhaps. (5)
24. Large proposals concerning buildings. (8)

DOWN

1. Lo! The place to stay perhaps? (5)
2. Lister? 'e made thing's completely clean. (7)
3. Six deliveries done. (4)
4. A popular cult has six limbs? (6)
5. A boxing match approximately. (5)
6. A meadow home is thinnest. (7)
7. Seal colour as it got thinner. (7)
12. Hot grub conveyed to 7 across perhaps. (7)
13. Female predator is a canine. (3, 4)
15. Tells about new tales. (7)
16. Peered about more profoundly. (6)
17. Small child, a little initially, adding to this. (5)
19. The principles of cricket hosts. (5)
21. Total about a hundred is a film. (4)



Fond farewell for publicans

By Mike Gutsell

Alan Woolford and Kerry Jones may have retired on January 6 2023 after running the Queens Arms for three-and-a-half years, but they certainly didn't go quietly!

December saw a raft of community events at the pub with the annual panto 'Bleadon Shop of Horrors' on Sunday 18 December being a particular highlight.

Written and directed by Jacqui Hall-Scott, the panto told the unlikely tale of a man-eating plant from outer space that lands in Bleadon. The panto attracted around 150 people to the Queen's car park on a rather damp evening, where they were treated to a colourful and enthusiastic spectacle which included everything from deranged dentists to wooden spoon flashing (you had to be there!).



The costume department pulled out all the stops (helped by the wonderful Bleadon Players), with Fran Bird's homemade carnivorous plant costumes stealing the show. Claire Gutsell, Mike Gutsell, Pete Trevitt and Charlie Presburg took the lead roles, supported by a cast of Queen's regulars with choreography from Lois Hall-Scott and music provided by DJ Tawaz.

Together with proceeds from a raffle, the evening raised £315 for the Bleadon Brownies.

The panto was followed on Friday 23 December by a night of Christmas songs, led by Charlie, Mike and Loz.

The session covered perennial favourites from Silent Night right through to Slade, with regulars at times drowning out the band!

Music has been a real cornerstone of Alan and Kerrie's time at The Queens, with the regular open mic sessions proving hugely popular. So it's fitting that their last day at the pub was celebrated with a final session



featuring many of the performers who have played at the pub in recent years, including the band Start of Time, which was formed at The Queens and solo performances from artists including Pete Trevitt, Steve Ewell, Mike and Andrea, and Anne Gibbs.

The music and dancing went on well into the night, including a presentation from Jacqui and a specially-written musical farewell to Alan and Kerrie from Les Masters.



Trees planted in village

By Bleadon in Bloom

This quarter has been all about the plaques, well and the trees. We planted all the trees and have also given out all the plaques to the children in the village. The second plaque was donated by Allsigns and designs to celebrate the good work of the Bloomers in winning the trophy and getting gold last year.



This year we have had our budget slashed - I know you probably all feel the same, so we thought we would work with what we have and see if we can 'bloom on a budget'. Therefore, our theme this year is 'Bleadon, Blooming Nothing - An Austerity bloom. This is actually a really exciting and competition-winning idea and will mean we need lots of

support from the community. It will also mean we are conscious of our environment and use what we have to get what we need.

Our wonderful horticulturalists are going to grow as much as they can for the tubs and we will need to support them by finding a group to go round the village and fix all the planters. We will need some help to paint them too so please if you are handy and painty get in touch and volunteer. Also, if you can grow things then get in touch as we want to use as many free and donated seeds or plants this year. We are looking for Blue and Yellow with maybe the odd splash of colour.

For our wildlife work this year, we are going to work with the Brownies to make a booklet about making habitats in your own garden for our wildlife visitors. We would love some help to print it and a graphic designer to help lay it all out please get in touch if you can help. Then we need someone who is good on the internet to be able to make a web site or Pinterest page to collect all the garden habitats in the village. Each person can make something in the garden and we will register it and show how many habitats we have.

If you have a child who would like to contribute a page for the booklet, then please get in

touch with Kirsten in the first instance - they don't have to be a brownie to make a page.

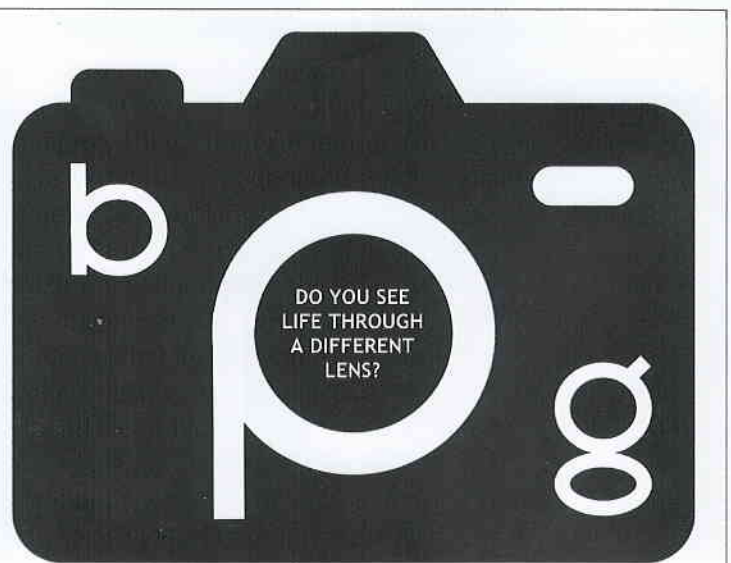
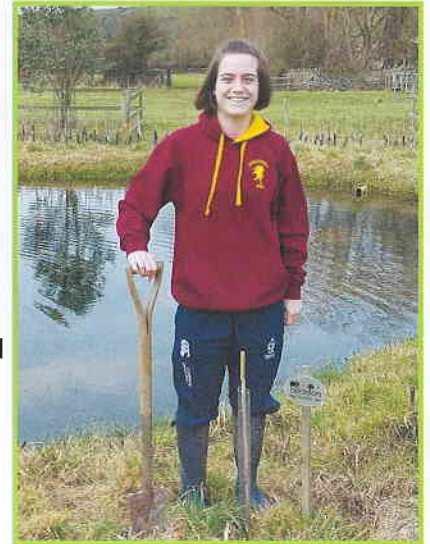
Out and about we will be focussing on the Rhyne network and once again we need some helpful people to walk around them and collect pictures of what you see. The IDB seem to be doing really well with the floating pennywort so we do need to look at the litter and the trees in the banks. If anyone has a canoe and fancies a dip, then let Kirsten know.

The final section of the competition relates to community, and we are keen to hear from any community groups that we can work with to deliver cheer by flowers and by growing food in the polytunnel or allotment. If you can find a use for the food we can grow it and it would be a great community project.

We have also potentially found a shed so if you want to be a man in the shed then also, please get in touch as we hope to kick off this group this year too.

Thank you Bleadon, we are looking forward to another special year.

Lots of love, The Bloomers



bleadon photographic group

NOW WELCOMING NEW MEMBERS

From first timers to seasoned amateurs, visit www.bleadonphotographicgroup.weebly.com

Update on roads and footpaths

By Graham Getty

The 20mph scheme for Bleadon is still on-going. As mentioned last time, it does take time to go through all the steps required to ensure an optimal fit for the village, however North Somerset Council have confirmed their commitment to helping us get this important road safety initiative implemented - as it has in an increasing number of nearby villages. More news as it emerges.

We are aware of several areas of our local roads that are in a poor state and these have been reported to North Somerset Council. As with all councils, there is a backlog of work, however we will persist on your behalf to get improvements done.

Don't forget you can self-report potholes directly on the North Somerset Council website and experience



shows that the spot fix team do deal with them quickly.

Several have been recently fixed along Celtic Way for example that were reported on the website. Speaking of Celtic Way, the grids and gullies have recently been cleared so hopefully there will be an improvement to the 'river' that flows down there in heavy rain.

The A370 now has a central island by the Bridge Road junction to aid safer crossing, and access to the bus stop. This has been put in place in preparation for the Bleadon Quarry development.

Our footpaths have suffered from the particularly wet weather we experienced at the end of last year, however they are recovering.

A new gate has been fitted to the footpath leading to the Mendip Way off Purn Lane. Signs have been put up at each end of the path between Rectory Lane and Purn Way clarifying that this section of footpath is not for horse riding or cycling.

Don't forget that between 16 April and 15 July the seasonal section of the Sand Bay to Brean Down Coastal Path, newly launched last year, will be open.

This section (marked in red on the map) along The River Axe across the Bleadon Levels affords wonderful views of the area. Note this section is footpath only, not for cyclists.

Happy walking everyone!



A370 Improvements at last

By Les Masters

Just for a change, let us thank North Somerset Council for some much-needed work that Bleadon has been requesting for a number of years - the traffic island and tarmac footpath near Bridge Garage.

This work makes it so much easier and safer for pedestrians, though this junction still lags behind the one by The Anchor.

I think most of us would like the speed limit to be reduced to 40, and a couple of street lights would help. Better late than never and let us be grateful for small mercies.



The coming of Methodism to Bleadon

The Lawry family—a brief history

By Penny Robinson

During the early part of the 19th century the Wesleyan Methodists, founded by John Wesley, were spreading their ministry far and wide across the globe.

However in our tiny corner of south west England, a group known as the Society of Bible Christians was flourishing, led by one William O'Bryan, - the year was 1815.

William's cousin was a preacher named William Lawry and he decided to move northwards from his native Cornwall to spread the word in Somerset. Thus it was that he came to reside in Bleadon in 1830, where he met Ann Hurdacre who had been born in the village and they were later married in the parish church of St Peter and St Paul.

The Lawrys decided to settle in Bleadon, found a farm to rent in the village and here they prospered. Such was their success that they decided to build and pay for a local chapel in 1842 where they both preached, thus spreading the non-conformist ideals of Methodism to the area. It was situated in Axbridge Road (now Shiplate Road).

Soon they had started a family and their sons Samuel, Walter and Frank grew up as young farmers in the community where they thrived. The eldest son became an agricultural worker according to the 1861 census, but not much more is known of him.

Frank, for some reason, when he was 21 seems to have quarrelled badly with his family and left home suddenly, and eventually emigrated to New Zealand.

More of him later..

Just prior to his death in 1874, William sold the chapel and grounds to the Bible Christian Connection for £100. He is buried in the churchyard of St Peter and St Paul. (To date I haven't been able to locate his grave!)

Walter, however, stayed in the village and married the newly arrived school mistress, one Miss Deane, and as was common in Victorian times the family grew and grew until eight young Lawrys were living in Bleadon.

As the years passed, it became a struggle to feed all these mouths, so the children, as they became old enough, had to work to pull their weight and one of the older sons (another Frank) was regularly getting up early to milk cows. (He later left farming and became apprenticed to a compositor on the Western Daily Press newspaper.)

However it seems the family rarely went hungry, and all the family enjoyed country living. However by the 1880s times became harder and farming was no longer a viable way of life for the Lawry family.

According to the school register, the children left Bleadon school in the autumn of 1881 and, with the rest of the family, moved to Bristol where Walter took on a shop, selling greengrocery, but the profits from this enterprise were meagre and the family suffered much hardship.

In spite of this, the children all seem to have received a good if rather basic education and found themselves jobs of one sort or another. After the shop-keeping business, it seems Walter took a job with the Bristol Tram Depot eventually becoming a foreman in 1897. He died in 1927 and is buried in Bristol.

What of Frank? Well, he went into politics in New Zealand and attained quite high office, but sadly his love of whisky prevented him from reaching the very top!

He married and had at least one daughter but beyond this there is very little else known of him. He died in 1921 and is buried in Bristol.

A modern footnote:

Last year I was pleased to meet a descendant of the Lawry family and show her and her husband around our lovely village.

It transpired that another of her antecedents once was the landlord of the Queen's Arms - so we went there for a drink, - how could we not!



The Methodist Chapel

As we have heard the Bleadon Chapel was originally part of that section of Methodism known as the Bible Christian Connection.

The Bible Christians established themselves in Bleadon in about 1840 and the chapel built by William Lawry, in Ax-bridge Road— present day Shiplate Road— opened its doors to worshippers on Friday September 9th 1842.

At first only evening services were conducted but by 1843 a service was started at 10.30 on Sunday mornings. The Sunday School was set up and it continued to educate the young in the Methodist faith for the next 100 years!

The chapel remained William's property until 1873 when he offered it plus the grounds to the Connection for £100. The reason given was that he suffered ill health and wished to settle his affairs before his death in 1874.

The group were unsure about the purchase, but after considering the large population of Bleadon and the fact that the only other non-conformist chapel was more than two miles away, they accepted the offer. Trustees were secured, the estate settled and on 5 November 1873 the purchase was recognised by a special service, followed by a public tea which raised funds for the upkeep.

The building itself was typical of most old chapels, with a small high pulpit and high-backed pews with doors, but by 1882 renovations were undertaken and a more modern pulpit and seats were installed, making room for 110 worshippers, according to records of the time.

Among those who raised money for these refurbishments were the Poole family, the Parker family and the Boley family, - the graves of these benefactors may be found in our present day churchyard.

Over the years the connection with the Bible Christians came to an end and Bleadon became part of the Weston-super-Mare United Methodist Circuit.

In 1919 a schoolroom was built as a memorial to those men from the village who gave their lives in the Great War. The original foundation stone can be seen embedded in the wall fronting one of the houses



in Shiplate Road.

For many years the Bleadon Guides and Brownies used the room, as did the youth club and junior guild. Later in 1939 the Woman's Bright Hour met here every Thursday afternoon. During the war years, the numbers attending services and Sunday school were swelled by evacuees who found Bleadon a place of welcome relief after living in wartime Bristol.

Of course as post-war Bleadon developed and new houses were built in the fields next to the chapel (The Veale) the population also grew and more Methodists found their way to other larger churches in the area.

Sadly the building eventually closed its doors, fell into disrepair, and was finally demolished in the 1960s to make way for the houses that stand there today. There are those still living in Bleadon who can remember the good days of the youth club etc. and those who played in the grounds during its demise- so I will leave them to their memories.

BUT - if you can, go and find the memorial stone, every year there is a small poppy cross laid there for Remembrance.

Penny Robinson
Bleadon History Society

A note from Penny: Thanks to those villagers who sent some of their memories and photos. Thanks also to the descendants of the Lawry family for allowing me

Dementia safeguarding tags

Register for our FREE Dementia Safeguarding Scheme NFC devices! Do you care for someone who is living with Dementia?

If so, please consider signing up to our Dementia Safeguarding Scheme by clicking this link: <https://www.avonandsomerset.police.uk/forms/dss> and claim one of our free NFC devices and lanyard!

We have just taken delivery of over 2,000 more NFC devices and lanyards thanks to funding from Bristol Water and Wessex Water in December 2022. The latest devices have QR technology as well as embed NFC chips

which will store vital information about the wearer living with dementia to allow them to be offered assistance and re-united with their carer/family member if they become missing or in need of assistance.

We have also been able to provide a new lanyard tag which is glow-in-the-dark for increased visibility in low light conditions.

If you have already signed up to the scheme you are welcome to collect one of our new NFC devices by calling into any of our 24 enquiry officers across the force area.

A professional complete service for you and your dogs needs

Single or group walks are with up to 6 dogs. I work carefully to ensure that the right mix of personalities is in each group. Walk time does not include travel time, so your dogs will be out the house for longer and still get their full walk allocation.

Walks are off or on lead, dependent on the dog, mostly in quiet countryside locations and the focus is always on an enriching and fun experience for your dog.

Walks involve mud, forests, hills, beaches, rivers and big open fields - if you're looking for a 'park and pavement' walker then I am not the right person for your dog.

For more details please call Graeme on 07599 207 449 or alternatively email swdogwalks23@gmail.com.

- Dog walking
- Canine first aid
- Puppy training
- Canine behaviourist
- Dog sitting



**SOUTH WEST
DOG WALKS**

Police update

As February draws to a close, we are seeing longer days of blue skies and warmer temperatures.

It can be tempting to throw open the windows, air out the house and welcome the warmer weather, but I would like to encourage homeowners to still remain vigilant.

If you are in the garden out at the back of your house, make sure the front door is secured and the front windows are closed.

Not all burglars wear masks, carry swag bags and only strike at night.

It takes a minute for an opportunist thief to put a hand through an open window to try a door handle or steal items from your home.

Keep valuable property out of sight and locked away, keep a list of serial numbers and mark property when you can.

CCTV or doorbell footage is wonderful if you can afford it but remember quality is better than quantity where any image is concerned.

Remember we are a community so keep an eye out for your neighbours—it's the best security we all have.

WI raises funds for charity

By Alison Matthews

As you would expect, the Christmas period was very busy for Bleadon WI. Our December meeting was great fun with a lovely bring and share buffet, secret Santa, and fabulous entertainment by Jordan Evans.

The ladies also voted for the new charity we are going to support over the next two years. We had received four very worthy nominations and Children's Hospice South West (CHSW) received the most votes. £229 was raised for CHSW that night getting our fundraising off to a great start.

Our Bleadon Belles sang beautifully at our carol concert. Thank you to those who were able to join us on such a cold night. We then warmed up with mince pies and mulled wine at the Queens Arms.

In January we were able to present our cheque for an amazing £10,341 to the Great Western Air Ambulance Charity (GWAAC), the charity we have been raising funds for.

We would like to thank everyone who supported our fundraising efforts from our community. This money was the result of much hard work by our members, the Bleadon Belles and the organising committee for the Bleadon Ball.

The final total raised from the Bleadon Ball was an incredible £8,742 so a big thank you to all those who attended and supported the Ball.

Our speaker in January Pauline Cox from Sow & Arrow gave us a fascinating talk on 'Women's health from mid life' which we all found thought provoking and very useful. We were also thanked by The For All Healthy Living Centre for the donations of toys and toi-



leties made by members. Our initial donations have helped more than 60 families.

Our February meeting will see us celebrating our 14th Birthday. We will mark this landmark event with a tasting evening from Cheddar Spirit Company!

We continue to enjoy a mix of other activities. Book club, choir, creative writing, skittles, supper club, trips, and walking groups.

So something for everyone. Bleadon WI membership is currently at our maximum of 100. If you do wish to be added to our waiting list, please email bleadon-wi@hotmail.co.uk

Bleadon Belles

By Jo Jones

The Belles were made very welcome by the Knoll Group WI at Batch Country House in February, who joined in the singing with enthusiasm.

It was the choir's first performance without Musical Director, Naomi. However, Kevin Joint stepped into the breach and managed very well the challenging task of conducting and accompanying.



Date for the diary:

The Belles are planning a Summer Afternoon Tea Part on Sunday 9 July.

Expect music, singing and cake!

BLEADON MAY DAY FAIR

is back on Monday 1st May

After a three year pandemic break Bleadon is now getting ready to celebrate the arrival of summer with the return of our annual May Day Fair on Monday 1st May. There will be some changes this year, with some new attractions and activities to enjoy. Plus the return of some long established May Day favourites

We are rather late in getting down to organising the event this year and the Coronation celebrations planned for the same week have only added to the Bleadon confusion.

The question of whether there will be a Bleadon May Day Fair this year has been on peoples' minds since we all emerged from the Christmas revelries. It's great to report that at last a plan is coming together. A lot of people are working hard to deliver an entertaining and fun filled event once again.

Some things have yet to be confirmed, but so far we can promise:

- Live music from Start of Time - a local band who have been regulars at the Queens Arms open mike nights
- Weston Karate Club demonstrating their skills and inviting audience participation
- Art Show by Bleadon Art Group in the Jubilee Room
- Toy stall (previously loved toys)
- Refreshments in the Coronation Hall
- Licenced bar - beers, cider, wine, soft drinks
- Hot food stalls outside
- Cakes and home produce
- Games to test your luck and skills

At the time of writing in late February we have yet to confirm a number of other attractions, including:

- Chalice Morris Men
- Plants stall
- Weston Woodturners
- Flowers in the Church

OFFICIAL NEWS!



VOUCHERS for the Game Stalls will be on sale at the park gate. CASH PLEASE



BLEADON MAY DAY FAIR

Gates open from 11am - 4pm



Start of Time LIVE

ADMISSION £2
FOR ALL over 2yrs
at the two entrances to the
car park in Coronation Road
 Please bring CASH as we are
 unable to take card payments.

The car park will be closed to all vehicles from 6am on Monday 1st May. If you can please walk to the event. CAR PARKING will be on the roads throughout the village. Drivers please park with consideration for residents and other road users. **We are unable to take your BRIC-A-BRAC this year** but, hopefully, it will be back in the future.



FAMILY GAMES & TUG-O-WAR
 sometime after 3pm



WANTED NOW
YOUR PRE-LOVED TOYS
 John is collecting toys, old and new, for the May Day Fair. Get rummaging, clean them up and give your child-hood treasures a new life. Call or message John Lance on 07425 940406
johnlance1@gmail.com

CALL FOR HELPERS

We always need plenty of helpers before and on the day. To put up gazebos, tables and chairs and then to put them all away. To man the gates, stalls and games throughout the day. We usually get over a thousand visitors on the day, so everyone is kept busy. If you can help please message Keith to let him know on **07757 012 862** or email keith.pyke@btoopenworld.com



Dates for your diary...

Bleadon Village Monthly Market

By Jo Jones

about... raising funds for improvements to our halls, as well as being an important social hub for the village. Come along and try a tasty snack from the new Coronation Kitchen.



After a very successful Christmas Market, we expected the January Market to be quiet, but it was really busy!

Now the kitchen volunteers are looking forward very much to trying out the refurbished kitchen on 18 March.

We are very grateful to the Hall Management Committee and Andy Harper for getting this off the ground. After all it is what the market is all



Some Of Our Yesterdays

By Les Masters



Penny Robinson and I have collaborated several times in presenting slide shows of Bleadon, with many interesting old pictures but also some relevant recent ones, all in aid of hall funds.

The last was in 2017, so we felt it is time for another. Various people agreed with us so the latest will be on Saturday 11 March.

Tickets are on sale at Bleadon Farm Shop. Our presentations have always been very well received by old and new residents and we hope you will come along and give us another full house.

"SOME OF OUR YESTERDAYS"

Saturday 11th March
7.30pm in the
Coronation Hall, Bleadon



A Slideshow of selected photos from the Bleadon Archives.

Presented by

Les Masters & Penny Robinson



Tickets £5 each

Available from the Bleadon Post office/Shop

Charity lunches for lent

by Gill Williams

You may or may not know that our Church in Bleadon has been organising charity lunches during Lent for the past quarter of a century and has raised thousands of pounds for mainly local charities during that time.

This year we are intending to do things slightly differently.

The venue and timing will be the same, the Church Room anytime from noon to 1.15pm.

The menu will also be the same: homemade soup, homemade bread rolls, tea and coffee.

The soups will all be vegetarian in nature and gluten free. However if you need gluten free bread we ask that you bring your own.

This year however we are collecting for five different charities:

- **Week 1. March 7th.** Bournville Foodbank
- **Week 2. March 14th.** Victims of the war in

Ukraine

- **Week 3. March 21st.** Local branch of Dog's Trust
 - **Week 4. March 28th.** The Woodland Trust
- As you can see, two of the charities are local, one national and one international.

In addition during all four weeks there will be a continuous collection for the victims of the earthquakes in Syria and Turkey.

The minimum cost of lunch is £3.50 all of which will go to the relevant charities but, of course, we hope you will feel able to add as much as you can afford to help all five charities.

Naturally, we would love to see you on all four dates, however on as many as you can manage you will be very welcome. Please do come.

Rip-tickling hilarity with Bleadon Players

Michael Cooney's riotous farce has all the ingredients for rib-tickling hilarity and offers a colourful selection of character roles.

Eric Swan (aided by his Uncle George and unbeknown to his wife, Linda) has pocketed thousands of pounds through fraudulent DSS claims.

When Norman Bassett (the lodger) opens the door to Mr Jenkins, the DSS Inspector, deceptive mayhem follows — as do the undertaker, bereavement counsellor, psychiatrist, Norman's fiancé, a corpse, the

ominous Ms Cowper and a rather rebellious washing machine!

CASH ON DELIVERY

25-27 May 2023

Tickets cost £10 and are available online now and from the Bleadon Post Office soon!

Bleadon Sugarcraft Club

Bleadon Sugarcraft Club is a fun lively club for anyone interested in cake decorating. It is for beginners to more advanced sugarcrafters, everyone will learn something from our evenings.

Our next meeting, on 23 March, will be a demonstration of an airbrushed puffer fish, and will be very entertaining.

We are in Bleadon Coronation Hall and meet at 7.30pm on the fourth Thursday of the month, first time visitors pay just £5, members free.

Just turn up on the evening. Full details can be found on Facebook page 'Bleadon Sugarcrafters'. Any further queries telephone Sue on 07535 915582. Look forward to seeing you.

Horticultural Society

The 48th Annual Spring Show will be held in the Coronation Hall on Saturday 4 March. Show schedules detailing classes are available from Bleadon Post Office and the church porch.

Future Meeting Dates include:

- **Tuesday 18 April:** Classic, rare and unusual bulbs – Gill Hazell
- **Tuesday 16 May:** Gardens on the Wild Side of Dartmoor – Hilary Little
- **Tuesday 20 June:** Beekeeping - with demonstration hive – Neville Lee and Thomas O'Neill

Meetings start at 7.30pm in the Coronation Hall. Entry is £3. All are welcome.

Support events at the Bleadon Church Room

By Sara Hughes

Bleadon Church Room registered as a Community Living Room/Warming Place from 3 January to 17 February while Riverside Holiday Park was closed for a month (with a week either side of their closure).

Riverside is up and running again now and our extra scheduled activities will largely come to an end, but Craft & Chat on the second and fourth Mondays of each month from 10am until noon.

Out to Lunch (at Riverside) will be on the first Wednesday of each month (noon for 12.30pm start) and the Community Craft (currently dog bed cushion making for the local charity, Dogs Friends) will be on the first and third Tuesday afternoons, from 2.30-4.30pm (notice the slightly later start please

for February and March) will still continue, as before, these are all now insured by the church.

Thank you for the support for the activities that will not be continuing, it was worth the experiment.

Can I please ask you to support the Charity Soup Lunches starting on Tuesday lunchtimes throughout Lent in the Church Room (see elsewhere in this edition for details) and also for the new Memory Café which started on Thursday 16 February and will continue monthly at the Riverside Holiday Park, hopefully on the third Thursday of each month (TBC) from 2-4pm.

If you need more information, need help with transport or want to book for Out to Lunch please contact me, Sara Hughes, on 811008.

Your local legal specialists

WARDS
SOLICITORS

We provide expert legal advice on:

Services for you...

Buying and selling a property | Wills, Probate and Trusts | Older and vulnerable client care | Probate disputes
Family and Divorce | Cohabitation | Accident and Injury | Employment law | Criminal Defence
Driving and traffic offences | Notary Public

Services for your business...

Employment law | Company and commercial services | Buying and selling commercial property | Business disputes
Commercial property disputes | Debt recovery | Notary Public

Get in touch: 01934 413535. 37 Boulevard, Weston-super-Mare, BS23 1PE

wards.uk.com

12 offices located across the South West: Bradley Stoke | Central Bristol | Clevedon | Henleaze
Keynsham | Nailsea | Portishead | Staple Hill | Thornbury | Weston-super-Mare | Worle | Yate

Solving your legal problems ...locally

What's going on at the shop?

by Charlotte House

Our theme weeks are proving very popular! Scottish week saw excellent sales of haggis, Scotch broth, whisky and our take on Scottish breakfast (which included Lorne sausage and tattie scone).

As I write this its Valentine's Day and we've sold all our beautiful flowers, lots of cards and chocolates.

Mothering Sunday is on March 19 and of course Easter is on April 9, for which we have a large range of cards, gifts and flowers.

The book and puzzle swap is flourishing... just help yourself to something you'd like to read and return it or replace it with another donated book. A lovely way to save costs and spread the love of reading. The cafe is a lovely peaceful place to sit in the afternoon with a book and a cup of tea.

We were privileged to host a wake recently. Guests enjoyed our vintage after-



noon tea, served in an intimate space where people could share memories over home-made cake.

Similarly, we thoroughly enjoyed serving a Baby Shower complete with balloons, gifts and celebrations. Whatever the occasion, we promise to make it bespoke for your needs.

Call Bev on 01934 815584 for bookings.

We recently said goodbye to Manshu who has retired from the PO business after decades (3 of them with us!). We're sure you would want to pass on your thanks to him for years of service in several local Post Offices.

To finish on a more serious note, you will be aware that the cost-of-living crisis has significantly affected many small businesses and Bleadon Farm Shop is no exception.

We can't guarantee to have a butcher on-site full time but continue to look out for our signature Scotch eggs, home-baked ham and sausage rolls. Please continue to support your local shop, Post Office and Café — have you ever googled to see what we add to the value of your house to have us on your doorstep?

You are guaranteed a warm welcome and we thank you for your custom.

Meet the team

Post Office clerks: Rachael, Tracey, Amanda, Peter and Anne

Shop staff: Kelly, Nikki, Helen, Lorna, Amy and Deb

Cooks: Bev, Steph and Ali

Café staff: Annie, Cici, Helen, Jess, Maxine, Zaara, Olivia, Mollie and Jared.

BLEADON VILLAGE

KINGS CORONATION CELEBRATIONS

FRIDAY 5TH MAY 2023 - MONDAY 8TH MAY 2023



Friday 5th May - Village progressive supper - exciting event where we eat together to raise money for local charities

Saturday 6th May - Kings Coronation - Judging of best dressed house start planning your Royal house now - sponsored by *Escape Salon*

Sunday 7th May - Street Party followed by Live Music into the evening

Monday 8th May - Community Day - litter pick and garden revamp

If any local businesses would like to sponsor an event or anyone would like to volunteer to help/ideas to add please contact us at bleadoncoronation@gmail.com

Save the dates and watch out for more information and how to attend events on posters and social media

Bleadon Village

MONTHLY

MARKET

Saturday

18th

March

15th

April

20th

May

17th

June

Coronation Hall and Jubilee Hall

BS24 0PG

9.30am – 12 noon

30+ stalls with:

Fresh local produce. Old Spot Pork & Sausages.
Goat Meat, Milk, Cheese, Lamb. Bakery. Eggs.
Pies. Savouries. Preserves. Cakes. Veg. Plants.
Books. Crafts. Jewellery. Collectables. Gifts. Toys.
Bric-a-Brac.

Something new every month.

Delicious locally sourced refreshments.

Find us on Facebook, Instagram and www.bleadon.org.uk/market

Spring has sprung for wildlife

By Pauline Kidner

April showers bring the promise of summer not being faraway. So many of us start to venture into the garden to get it ready for the times that we will spend enjoying the warm weather.

But it is now becoming increasingly obvious that our gardens are so important for wildlife. That starts from insects that pollenate flowers so that we enjoy our vegetables and eventually fruits as the last of the summer days start to wane.

I find it amusing to see the dates written on the packets of seeds that we buy which have been collected and stored and yet usually only state 'best before' as the next year at the latest.

When you think of the time that it takes for a tree to grow before it eventually dies and falls - which can be decades if not more. And yet as soon as the tree falls and sunlight touches the soil, dormant seeds will germinate and grow.

We need to use our gardens as a habitat for wildlife by planting shrubs such as the 'butterfly' bush, the buddleia which is a favourite with many insects.

Flowers that are the original plant and not hybridised have very simple petals which makes it easier for insects to find the pollen and nectar.

Once the flowers have double petals and become more complicated, the less they attract insects. Please don't have artificial grass - it's us humans making life easy with no thought of the effect on the foraging quality of a lawn.

Certain species of birds are timed for the emerging insects such as the Bluetit that is almost reliant on the Oak Moth caterpillars emerging at the right time when their nestlings are calling for food.

One reason for large nests of baby Bluetits failing is because the timing has gone wrong and there is no food for them.

Both Dormice and Harvest mice rely on pollen and nectar for the first part of the summer and then as the flowers turn to berries, the harvest is rich with grain and nuts.

A pond in your garden doesn't have to be large. With a sloping edge so that anything falling into the pond can climb out, you will be amazed how soon wildlife takes up residence with the magical emergence of dragon flies.

Frog and toads will soon frequent your garden and the small hole in the fence will let them in and even attract some hedgehogs. One good garden is not enough for a hedgehog who will roam over 1 kilometre to forage.

How fantastic that farmers are now allowing wildflowers to grow alongside their hedges although I doubt, we will see beautiful fields full of poppies as wildlife photographer, Andy Rouse once captured when taking a photo of a roe buck looking out. We have to learn to share our gardens and our countryside with our wildlife before it is too late.

We hope you will join us at Easter when we have our open days.

Visit www.secretworld.org for more information or tel 01278 783250 for details or advice.



Professional Services for
PRINTING
DESIGN
GRAPHICS
BOOK PRODUCTION

Same day response for all quotes and enquiries.
Friendly, local and independent.



01934 635916

www.taylorthorneprint.co.uk

Unit 2, Glencoe Business Park, Warne Road, Weston-super-Mare, Somerset BS23 3TS

MOBILITY EQUIPMENT

Scooters
Powerchairs
Wheelchairs
Stairlifts
Rise & Recline Chairs
Walking Aids / Bathroom Aids
Pressure Cushions
Incontinence Products
Cosyfeet Slippers & Shoes
We Service & Repair Scooters etc

0% finance available on selected scooters

Wilmott mobility

**6 Pages Court
High Street
Yatton
BS49 4EG**

Ample free parking but if you cannot get to us
we are happy to come to you!

Tel: 01934 838363
www.wilmottmobility.co.uk

Thoughts of an ex-councillor

by Les Masters

Soon after I was elected to our parish council in 1990 a very sobering thought occurred to me. For the first time in my life I was in a position to help COMPEL other people to cough up money, specifically my fellow residents.

Since I was the local newsagent and subpostmaster, I regularly met large numbers of them, so I was exercised to make sure I could justify to them whatever expenditure the nine of us agreed. There was definitely no hiding place or scope for a spending spree with other people's money.

This thought is doubly relevant nowadays. For some years, governments have limited the extent to which larger councils can increase their council tax, but there is no such curb on parish councils, so they really should make sure they do not abuse this freedom.

Parish councils are different in another way, the means by which they are filled-or not. Every four years the council is dissolved and the stage set for elections. There is, quite rightly, no party system, nominations being for individuals. In all my time in Bleadon since 1987, there has never been a full slate of nominations, resulting in all the nominees becoming councillors without a vote being held.

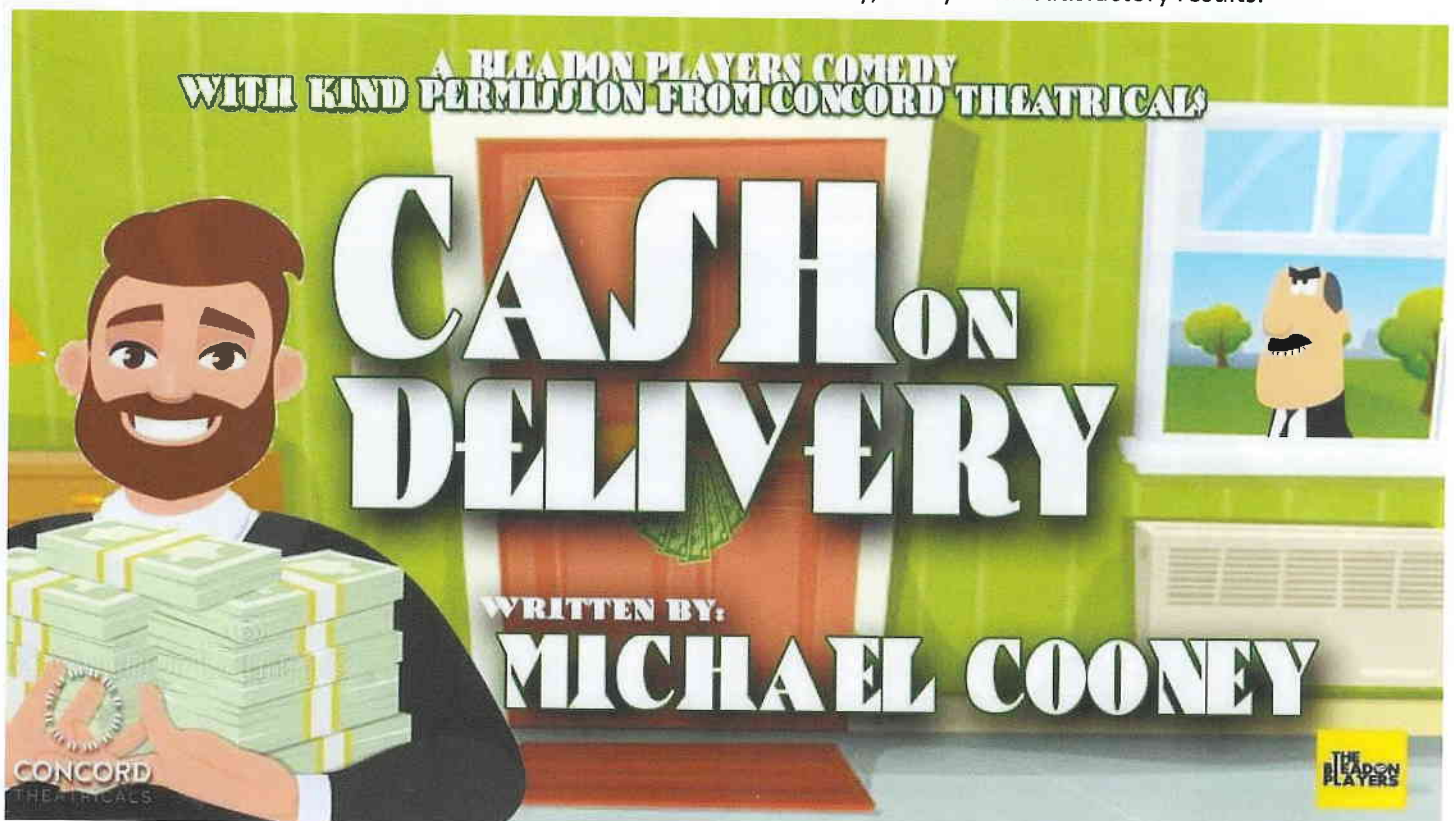
There have been some by-elections (mine included) but the vast majority of vacancies have been filled by co-option, which saves the cost of elections but has its drawbacks. One obvious risk is that councillors will choose cronies. Dissidents, however capable and public-spirited, are unlikely to be recruited. Another problem is procedure. During my nine years on the council we made a good number of

co-options, always in closed meetings.

On principle I would never have discussed fellow residents in public. By the same token I would never consent to being interviewed by fellow residents, in public or in private, but I would submit to the decision of the electorate. The costs of an election are not exorbitant, especially set alongside some of our council's expenditure in recent years. I really hope we have well over the nine nominations this year so that the council reflects the wishes of the people of Bleadon.

Many readers will be well aware that Bleadon's council tax is among the highest in North Somerset parishes. Part of this is due to two commitments that most parishes do not have. About 40 years ago our churchyard was closed for burials. Normally when that happens, responsibility for the upkeep of the churchyard goes to the district council, but the then-parish council decided to take it on. Much more recently North Somerset Council stopped funding the public toilet on the edge of our car park, and rather than let it close the parish council decided to provide the funding for it. I present these facts without comment.

My final thought is that it is important to understand what parish councils can and cannot do. If a problem is the responsibility of the district council go direct to it. The parish council is not a stepping stone. Let me give two simple examples. Just after Christmas a pothole started to develop in Bleadon Road near Chestnut Lane. It grew rapidly to the extent that a local driver burst a tyre. North Somerset were informed online and the hole was filled within a couple of days. We regularly have problems with blocked gullies, and several times over the years I have reported them in the same way, always with satisfactory results.

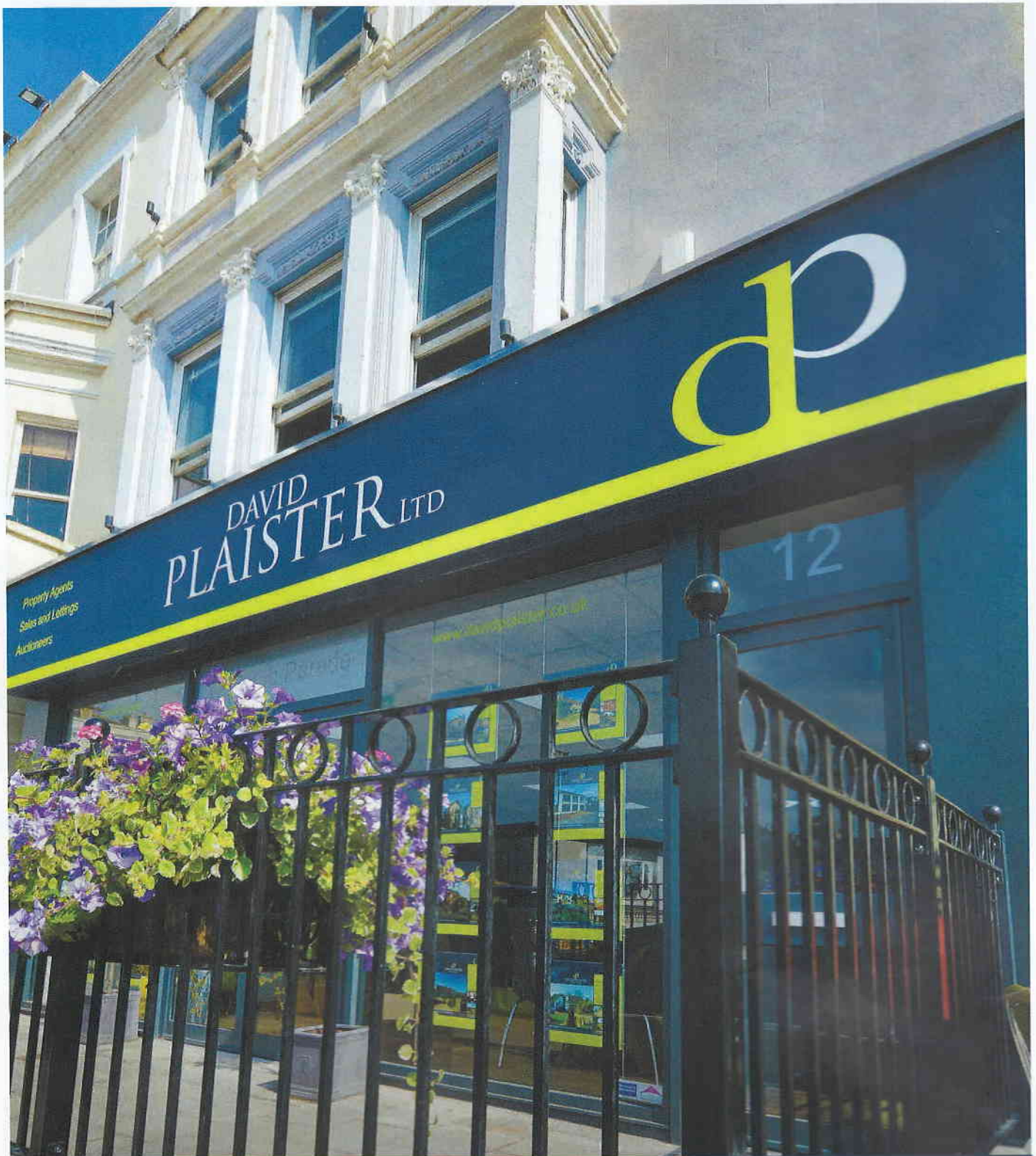


Puzzle page answers

H	I	S	T	O	R	I	C			A		L
O		T		V		N		T	A	B	L	E
T	H	E	R	E	D	S	E	A		O		A
E		R		R		E		P		U	R	N
L	A	I	D		A	C	C	E	P	T		E
		L		B		T		R				S
S	H	E	A	R	S		F	E	R	R	E	T
H				O		D		D		E		
E		T	O	U	R	E	D		C	L	U	E
W	O	O		G		E		S		A		T
O		T		H	O	P	S	C	O	T	C	H
L	E	A	S	T		E		U		E		O
F		L			P	R	E	M	I	S	E	S

**Many thanks to all
contributors and advertisers
for your ongoing support.**

Coronation & Jubilee Halls Supervisor	Bill Blacklock	01934 813031	07747 801753	
Coronation & Jubilee Halls Bookings	Robin Flavell	01934 812218	07724 010715	bleadoncoronationhalls@gmail.com
Youth Centre Bookings	Keith Pyke	01934 813127		keith.pyke@btopenworld.com
Church Room Bookings	Sara Hughes	01934 811008		sara.hughes@btinternet.com
Monday 9.30-10.30am Jubilee Room				
Yoga	Cheri		07717 290708	info@uniquebalance.co.uk
Monday 1.15-4.30pm Coronation Hall				
Bridge Club	Doug Norfolk	01934 812128	07547 163862	dough@btinternet.com
Monday 7-7.50pm & 8-8.50pm Jubilee Room				
Aerobics	Marie Keele	01934 270853	07939 038071	mariekeele@hotmail.co.uk
2nd Monday 7.00pm Coronation Hall				
Bleadon Parish Council	Kirsten Hemingway (Chair) Parish Clerk	01934 815540	07710 098804	kirstenhemingway@bleadonparishcouncil.co.uk parishclerk@bleadonparishcouncil.co.uk
3rd Monday 7-10pm Coronation Hall				
Holistic Therapy	Debbie Thorne		07905 537118	debbiethorne37@hotmail.com
Tuesday 10-11am Jubilee Room				
Tai Chi (over 60s)	Age UK	01823 345626		ageingwell@ageuksomerset.org.uk
Tuesday 10.30-12.30 Coronation Hall				
Art Class	Tina Dodd	01934 843660		sandtdodd@btinternet.com
1st, 2nd, 4th & 5th Tuesday Sept-May 7.30-9.30pm Coronation Hall				
Photographic Group	Trevor Hartgroves Mark Frisby	01934 239011 01934 812573	07796 693032	t.hartgroves@sky.com marknfrisby@yahoo.com
3rd Tuesday Oct-Jun 7.30- 9pm Coronation Hall + Spring & Summer shows				
Horticultural Society	Libby Boucher Rose Benjamin		07966 563495	libbyboucher2003@gmail.com
Tuesday 7.30 - 9pm Jubilee Room				
Women's Institute Choir	Bev Riddell Maggie Heath	01934 811218 01934 813050	07970 475626 07761 102934	riddell2en@btinternet.com
Tuesday 2.30-4.30pm (Sept-May) Friday 7-9pm Jubilee Room				
Short Mat Bowls	Kevin Barrett	01934 811267	07855 225049	kevinbarrett240@btinternet.com
Wednesday 10-11am Jubilee Room				
Tai Chi	Rachel Jelbert		07760 663614	jelbert9@icloud.com
Wednesday 11.30am-12.30pm Jubilee Room				
Stay Strong, Stay Steady	Age UK	01823 345626		ageingwell@ageuksomerset.org.uk
Wednesday 4.45-5.30pm Jubilee Room				
Dance with Georgia	Georgia Forte		07413 171714	dancewithgeorgiauk@gmail.com
Wednesday 7-8pm Jubilee Room				
Pilates	Corinne Mutlow		07919 532960	coz@cmutlow.com
Wednesday 7.30pm + shows in January, May & September				
Bleadon Players	Peter Gibbon		07859 001468	peter@mpgifa.co.uk
Thursday 10-12noon Jubilee Room				
Bleadon Art Group	Stevie Rhodes	01934 813497		
Thursday 6.15-7.15pm Jubilee Room				
Yoga	Sayeeda Alam		07725 901810	info@sadayoga.co.uk
1st Thursday 7.30pm Coronation Hall				
Weston Music Society Concert	Jo Lucas	01934 812759		no emails
2nd Thursday 7.30pm Coronation Hall				
Women's Institute	Elaine Mellor (Secretary) Michelle Harper (President)		07854 628664 07780 688830	bleadonwi@hotmail.co.uk harper.a5@sky.com
3rd Thursday 7.30pm Coronation Hall				
Bleadon Coronation Halls Management Committee	Betty Paterson (Chair) Ian Gibson (Treasurer) Kevin Barrett (Secretary)	01934 812183 01934 814261 01934 811267	07855 225049	betty.p.paterson@gmail.com igibson6@sky.com kevinbarrett240@btinternet.com
4th Thursday 7.15 - 9.15pm Jubilee Room				
Bleadon Sugarcraft Club	Sue Dennyly		07891 996707	bleadonsugarcraftclub@gmail.com
Friday 9.30-10.30am Jubilee Room				
Pilates	Emma Hunter		07787 563775	emma@ehsportstherapy.com
Friday 2-4pm Coronation Hall				
Friendship Group	Gordon Brown	01934 811926		no emails
3rd Saturday 9am-12.00pm (both halls)				
Bleadon Village Market	Jo Jones	01934 812370		jojonesbleadon@tiscali.co.uk
YOUTH CENTRE				
Monday 10:30am-12:30pm	Recorder group (U3A)	Louise Harwood		harwoodlouise@hotmail.co.uk
Tuesday & Friday 5:30pm	Tricky Paws	Carrie-Anne New		trickypawsuk@gmail.com
Tuesday 8.30pm	Dance the Night Away	Sharon Insley	07502 285547	
Wednesday 7-10pm	Veterans Table Tennis	Ann Sandford		ann@sandford-ca.co.uk
Thursday 7-9pm	Youth Club	Keith Pyke	01934 813127	keith.pyke@btopenworld.com
CHURCH ROOMS				
2nd & 4th Monday 10:00am	Craft & Chat	Sara Hughes	01934 811008	
Tuesday 5:30pm	Brownies	Jacqui Hall-Scott	07730 498371	j.hallscott@btinternet.com



DAVID
PLAISTER LTD

Property Agents
Sales and Lettings
Auctioneers

www.davidplaister.co.uk

12



DAVID PLAISTER

PROPERTY AGENTS | SALES & LETTINGS | AUCTIONEERS

01934 815053

www.davidplaister.co.uk