

SEPTEMBER 2021  
ISSUE 119

# Bleadon News

## INSIDE

THIS

## ISSUE

### PAGE 7

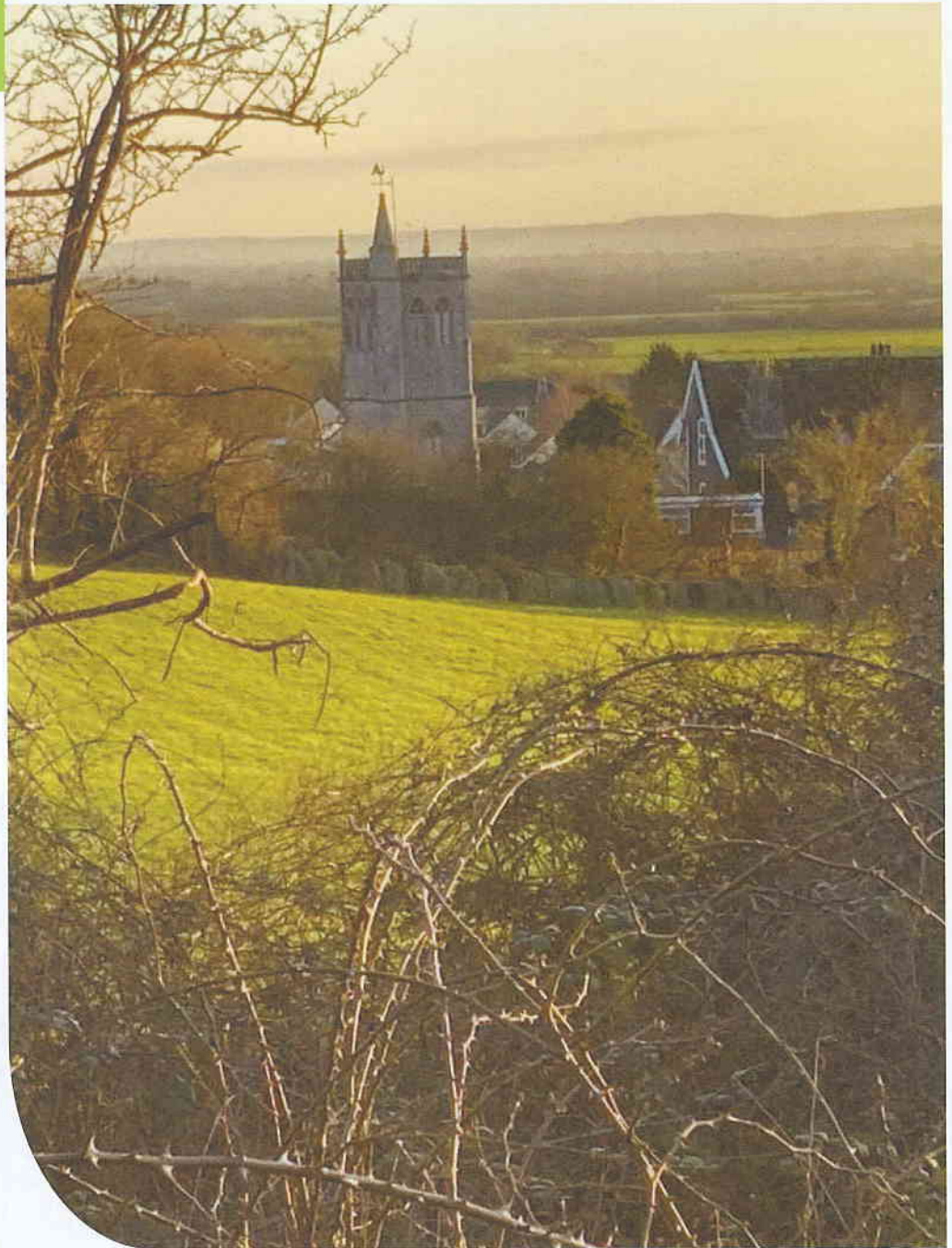
Council calls for support to regild church tower clock.

### PAGE 12

Support local artists during North Somerset Arts Week

### PAGE 18

Walk around Bleadon with Jo and Maggie



### Dates I need to know for the next edition...

Publication of the summer edition of the magazine: *December 2021*

Cut off for content: *November 13th 2021*

Cut off for advertisement: *November 20th 2021*

Front page image credit: Paul Wilmott



Bleadon Village News



@BleadonParishCouncil

“At the end of the day, we shall all be okay again. The sun will shine on you again and the clouds will go away.”

*Captain Sir Tom Moore*

# City of Bristol College is ready and waiting for you!

- A Levels
- Vocational courses
- Apprenticeships
- Higher Education
- Adult and part-time
- Evening courses



Come and visit us at one of our **Open Days**

Saturday 9 October 2021	10am - 2pm
Tuesday 19 October 2021	5pm - 7pm
Tuesday 30 November 2021	10am - 2pm
Saturday 22 January 2022	10am - 2pm
Wednesday 30 March 2022	10am - 2pm
Saturday 18 June 2022	10am - 2pm

#MyBristolCollege

#StayLocalGoFar

0117 312 5000

[enquiries@cityofbristol.ac.uk](mailto:enquiries@cityofbristol.ac.uk)

[cityofbristol.ac.uk](http://cityofbristol.ac.uk)



# Chairman's message

## Gill Williams

Hello everyone,

At last some promise for a more normal future!

Plans for village activities are now well underway and we are looking forward to planning village celebrations for the Queen's Jubilee next year (see page XX).

In the last issue of the Bleadon Village News, I an-

nounced we were a full council again.

I have to report that Councillor Dave Sharman has since had to announced his retirement leaving us with one seat unoccupied.

Please do consider the possibility of joining us on Bleadon Parish Council. We would welcome all applications but it would be really good if we could vote-in a member from either the Shiplate/Veale end of the

village or from Hillcote, thus giving us a wider village representation.

Do think about it! No qualifications are needed, just an interest in helping to keep our lovely village a great place to live.

Once again, many thanks to Bleadon in Bloom for their help in keeping it so lovely!

Until next time!

**Gill Williams**

Name	Contact number	Email
Gill Williams (Chairman)	01934 813255	<a href="mailto:gillwilliams@bleadonparishcouncil.co.uk">gillwilliams@bleadonparishcouncil.co.uk</a>
Mary Sheppard (Vice Chairman)	01934 812921	<a href="mailto:marysheppard@bleadonparishcouncil.co.uk">marysheppard@bleadonparishcouncil.co.uk</a>
Andy Scarisbrick	01934 813125	<a href="mailto:andyscarisbrick@bleadonparishcouncil.co.uk">andyscarisbrick@bleadonparishcouncil.co.uk</a>
I D Clarke	01934 815182	<a href="mailto:idclarke@bleadonparishcouncil.co.uk">idclarke@bleadonparishcouncil.co.uk</a>
Rob Tyson	-	<a href="mailto:robtyson@bleadonparishcouncil.co.uk">robtyson@bleadonparishcouncil.co.uk</a>
Ann Davies	07769 783971	<a href="mailto:anndavies@bleadonparishcouncil.co.uk">anndavies@bleadonparishcouncil.co.uk</a>
Kirsten Hemingway	-	<a href="mailto:kirstnhemingway@bleadonparishcouncil.co.uk">kirstnhemingway@bleadonparishcouncil.co.uk</a>
Vacancy	Vacancy	Vacancy
Huw Boyce	-	<a href="mailto:huwboyce@bleadonparishcouncil.co.uk">huwboyce@bleadonparishcouncil.co.uk</a>

# Parish Council Snippets...

by Bruce Poole

You may have deduced from several sources Bleadon Parish Council is once again unfortunately reduced to eight members as opposed to the regulated number of nine.

Councillor David (Dave) Sharman decided he was not able to continue and as such delivered his written resignation as resignees are required to do to the council chairman.

Clearly it was reluctantly accepted and at the July council meeting it was resolved that a letter should be sent to Dave to thank him for his past services to both the council and the village as a whole. Thankfully he is continuing with his Bloomers Hat on!

I was fortunate to join the chairman at a small gathering of volunteers recently where a 'cup of tea' was provided in the Jubilee Hall to round off the day of judging in regards to the Britain in Bloom Competition.

The village of Bleadon has a lot

to be thankful for to the many Bleadon Bloomers for the wonderful flower display they produce throughout Bleadon.

Not forgetting of course the individual Tub Champions who care for the tubs immediately outside of their homes. It is clear that many hands make light work. Thank you so much and to their organiser Kirsten Hemmingway.

## “ The village of Bleadon has a lot to be thankful for to the many Bleadon Bloomers!

I realise the subject matter of the Church Clock and its proposed regilding to celebrate the Queen's Platinum Jubilee will be reported on elsewhere in these pages.

Suffice to say it is unusual occurrence for a parish council to have ownership of a clock – known as a turret clock – when it is firmly situated in

someone else's property in this case the Church.

From the records I have gleaned one fact which was made quite clear by the then-parish council clerk that it was to be the sole responsibility of the parish council for both the winding and maintenance.

The original provision was by public subscription. Thanks latterly to Brian Robinson who winds the clock on a regular basis and the parish council who oversees its annual maintenance. It is quite clear from the many comments made that it would be sorely missed more so apparently when on the very odd occasion it has depicted the wrong time!

In days gone by the month of August was deemed to be a quiet month and one when the council did not formally meet.

This was because, in most villages, they were made up mainly of farmers and of course they would be busy harvesting.

However from my point of view this month so far has been as busy as ever and it is only half way through.



Bleadon from Hellenge, Picture credit: Annette Hill

# Vaccine passport scams—be aware!

## by Avon and Somerset Police

**A**ction Fraud has received more than 700 reports from members of the public about fake emails purporting to be from the NHS. The emails claim to be able to provide people with a 'digital passport' which 'proves you have been vaccinated against COVID-19'.

These emails are fake, and the links within them lead to genuine-looking websites that steal your personal and financial information.

### How to protect yourself:

In the UK, coronavirus vaccines will only be available via the National Health Services of England, Northern Ireland, Wales and Scotland. You can be contacted by the NHS, your employer, a GP surgery or pharmacy local

to you, to receive your vaccine. Remember, the vaccine is free of charge. At no point will you be asked to pay.

- The NHS will never ask you for your bank account or card details.
- The NHS will never ask you for your PIN or banking passwords.
- The NHS will never arrive unannounced at your home to administer the vaccine.
- The NHS will never ask you to prove your identity by sending

copies of personal documents such as your passport, driving licence, bills or pay slips.

- Your vaccination status can be obtained for free through the official NHS app, NHS website, or by calling the NHS on 119.

### How to report scams:

If you receive a call you believe to be fraudulent, hang up. If you are suspicious about an email you have received, you can report it by forwarding the email to: [report@phishing.gov.uk](mailto:report@phishing.gov.uk).

Suspicious text messages can also be reported by forwarding them to the number: 7726 (it's free of charge).

If you believe you are the victim of a fraud, please report this to Action Fraud as soon as possible by calling 0300 123 2040 or visiting [www.actionfraud.police.uk](http://www.actionfraud.police.uk).



# Sugarcrafting is back after lockdown break

**A**fter a long break for the Bleadon Sugarcraft Club, due to Covid-19, the club will be making its long-awaited return in September.

If you are interested in learning sugarcraft as a beginner, or want to improve existing skills with like-minded people, then come along to our complimentary social evening on Thursday, 23 September.

Please arrive at 7pm for a 7.30pm start at the Coronation Hall, in Coronation Road, to find out what the Bleadon Sugarcraft Club can offer, without any obligation.

There will be a few mini demonstrations by existing members of the club.

Drinks and nibbles will be provided, but please bring your own cup

or glass and a face mask as we want to keep everyone as safe as possible.

All we ask is you let us know if you would like to attend in advance so we have an idea of numbers, thank you.

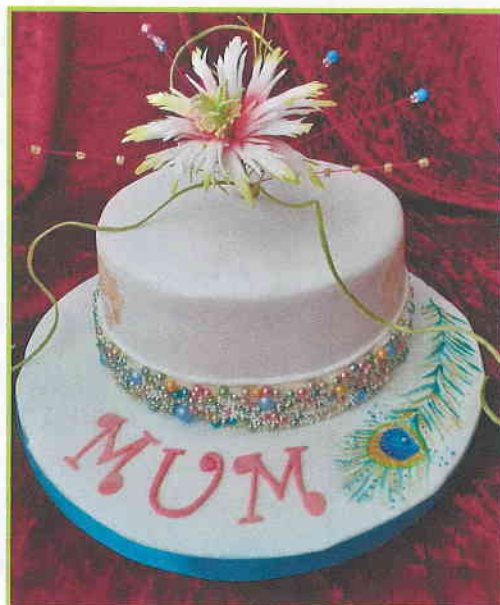
You can do this by contacting Sue on 07535 915582 or contacting us through the Bleadon Sugarcrafters Facebook page.

Future meeting dates planned are as follows:

- 28 October 2021
- 25 November 2021
- 28 January 2022
- 24 February 2022
- 24 March 2022

These feature a mixture of practical evenings and professional demonstrations and you can sign up to a half year's subscription in October for just £25.

**We look forward to seeing you!**





Answers available on p25.

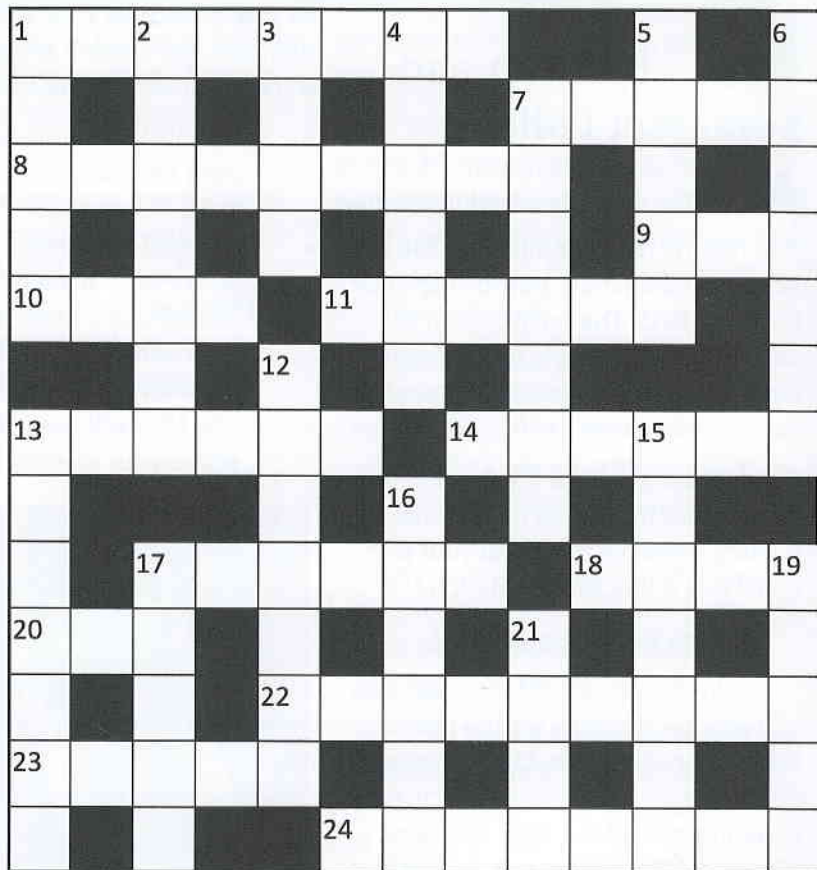
## George's crossword

### ACROSS

- 1 & 24. In the air, its members are all bonkers! (4, 4, 4)
- 7. Sweetener maybe golden (5)
- 8. Give unconscious feline a booster (9)
- 9. Alternatively, Ron comes back (3)
- 10. Awful ride (4)
- 11. Ear fed in confusion. Afraid so. (6)
- 13. Andrew may roam around (6)
- 14. Kid initially starts to ruin screw (6)
- 17. A granny is an initial Spanish pineapple (6)
- 18. The responsibility is ours (4)
- 20. Name a reversed young flower (3)
- 22. Will the dean cater for one at afternoon function? (9)
- 23. Places spots (5)
- 24. See one

### DOWN

- 1. Deceiver may be two (5)
- 2. Experienced animal doctor ran round the east (7)
- 3. Night flier (4)
- 4. Hang about, Heather, with the Queen (6)
- 5. Jo's trademark (5)
- 6. Distilled ghosts (7)
- 7. They caress Richard and frighten (7)



- 12. Edits communist parts of play (7)
- 13. Fiction of the mind. BLANK dreams (7)
- 15. Pointed—it could be laconic (7)
- 16. Sausage could be as Mail (6)
- 17. Southern instrument comes up and touches (5)
- 19. Brush, maybe, in garden (5)
- 21. Hurry—! (4)

## Ellie's sudoku

5	3			7				
6			1	9	5			
	9	8					6	
8				6				3
4			8		3			1
7				2				6
	6					2	8	
			4	1	9			5
				8			7	9

## Riddle me this...

- 1. I have lakes with no water, mountains with no stone and cities with no buildings. What am I?
- 2. A man looks at a painting in a museum and says, "Brothers and sisters I have none, but that man's father is my father's son." Who is in the painting?
- 3. What goes through cities and fields, but never moves?

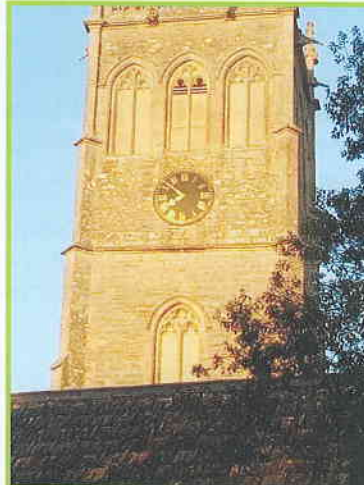
# Thousands needed for clock ahead of jubilee

by Ann Davies

The Church Clock was installed in 1897 and paid for by public subscription. Since 1932, Bleadon Parish Council has been responsible for the upkeep and maintenance of the clock.

The clock is now in need of re-gilding and the parish council has resolved to have this work carried out in time for Her Majesty the Queen's Platinum Jubilee in June 2022.

This is an expensive project at £12,000 but fortunately is not a job which needs doing regularly. The last time the clock was re-gilded was in 1962. Subject to planning permission, we are hoping to launch some fundraising events on 1 October 2021, the council is launching a fundraising campaign to help offset the cost.



There will be an unveiling of a 'clockometer', which will be situated on the green in front of the church, to track the amount of donations received.

Fundraising ideas and arrangements are in their infancy but we are hoping to sell a space or plaque on which your name or company logo will appear and which will form part of a display wall.

Councillors will be present at the village markets to run smaller fundraising events such as a raffle, loose change bucket and so on. There may even be a sponsored abseil down the church tower!

A fundraising webpage will be set up to which donations can be made. There are other ideas in the pipeline and we welcome any suggestions you may have.

As there will not be another issue of the Bleadon New before the launch on 1 October 2021, please look out for updates on the BPC website, Facebook, Twitter and in the noticeboards.

## Get involved with planning the jubilee celebrations

by Gill Williams

In July, the parish council called a meeting with representation from the parish council, the church, the youth club and the village hall to begin discussions on what the village might do to celebrate the Queen's Platinum Jubilee in 2022.

The official dates for the celebration are 2-5 June 2022 and already agreed events are:

- 2 June (morning): Trooping The Colour.
- 2 June (dusk): Lighting the Beacon chain
- 3 June (morning): Thanksgiving Service at St Paul's Cathedral
- 4 June (evening): Nationally televised concert from Buckingham Palace.
- 5 June (afternoon): the Big Lunch. This event is intended to encourage whole communities, in whatever ways they wish, to celebrate the occasion with a lunchtime activity-based around sharing food.

At our meeting we agreed to explore:

1. The possibility of a civic church service on 29 May to open the Bleadon celebrations.
2. To have the lighting of a village beacon on 2 June.
3. To have a big lunch (details to be decided later but probably to be based at the Coronation Hall/Jubilee Room/car park site.

It was also announced to this group that the parish council had, at its last meeting, agreed that the gilding of the parish clock would be the jubilee project for the council.

After further discussion, it was agreed that all village groups and societies should be invited via this magazine to send a representative to a meeting in the Church Room at 7pm on 7 September. At this meeting, it is hoped all the groups who wish to be involved can offer ideas in which their groups can best use their skills and interests to celebrate the occasion.

So, if you are a member of a village group and would like to be involved please contact your leader re attendance at the meeting on 7 September.

It should be an unique national event and we would like to make it an unique village event too.

# Bleadon Farm Shop opens café next door

**A**s well as a thriving delicatessen with outdoor eating area, we are very excited to have re-opened the café, now fully refurbished with new décor, toilet and kitchens. Hours are 9am-2pm on weekdays, 9am-4pm on Saturdays and 9am-1pm on Sundays, we're not closed until Christmas Day!

Our menu is based round our delicious home-baked ham, homemade sausages, cooked breakfast and platters, filled baguettes and a host of other daily specials. Cooks Bev and Hayley bake the most amazing quiches and cakes freshly each day as well as lovely seasonal dishes and salads.

The delicatessen continues to stock tempting new products, including top notch savory biscuits, crisps and other delicious snacks to accompany Past Times Mature Cheddar, Draycott Blue and Somerset Brie. If you love a bespoke coffee, do try our wonderful Lofberg coffee beans, as a cappuccino, latte or espresso, either enjoy inside, outside or to takeaway, whatever

er takes your fancy.

In the butchery, Barry and Jay are there from Tuesday to Saturday and the selection of locally produced meat is amazing. We supply fresh fish from The Conscious Fish Co, who enable small Cornish fishermen to fish sustainably. We think that ethic suits our farm shop down to the ground. Order your fish by Monday afternoon and it will be delivered on a Thursday.

We're always looking for new themes and products. In the café there is a small artisan shop, currently stocking Kenyan soaps (admittedly not local but supporting the Hutton Dabaso Twinning Association), wax melts, artisan chocolate and handmade soaps.

If you have a small business and would like to outlet in our 'shop within a shop', please bring along a sample of your work and we'll try to accommodate.

The Post Office is open from 9am-5.30pm on weekdays and 9am-1pm on Saturdays. Post Office clerks are Manshu,

Georgia, Rachael, Michelle, Tracey, Amanda and Izzy.

In the shop we have Kelly, Jaz, Luke, Nikki, Helen, Mir and Lorna. Service with a smile in deli comes courtesy of Annie, Cici, Helen, Maxine, Mae, Katie and Olivia. Others in the team include Amy and Oli... you see we're still growing!

Finally, we're offering special Christmas lunches for two weeks only from 6-17 December. Groups of 12-20 people will be served a two or three course festive lunch in our 'top room', with decorations, crackers and BYO wine service.

Call Bev on 01934 815584 for more details or pop on for one of the Christmas leaflets. There are only 10 spaces, so book early to avoid disappointment!

Whether you are a seasoned customer or have never visited us before, we offer a warm welcome, friendly service and great produce. Whenever possible, we respond to customer requests and we're happy to receive suggestions at any time!

## The market is coming back!

**E**xciting news! It has been agreed by the organisers that Bleadon Village Market will hopefully restart on Saturday 4 December for our Bleadon Christmas Market 2021.

Although restriction have currently been lifted, we are still trading cautiously for the safety of our volunteers, traders and visitors. Things may be a little different this year!

We will wait and see how things progress and we may still have to amend our plans but hopefully there will be many old friends and fresh faces among our stallholders.

The market has been run for many years as a successful social hub for the community and a fundraiser for the village halls. There will be a meeting of the Friends of Bleadon Village Market this autumn to discuss how best to take it forward. If you would like to join us, please contact Jo Jones on [jojonesbleadon@tiscali.co.uk](mailto:jojonesbleadon@tiscali.co.uk)

**We look forward to welcome you back!**

**Christmas lunch at Bleadon Farm Shop**

*Festive lunch for groups between 12-20 people.*

*Christmas lunches are served from 12.30pm between:*

**6-10 December**  
**13-17 December**

**Starter:**  
Melon with parma ham  
Warming winter soup

**Main:**  
Roast turkey dinner  
Vegan/vegetarian option

**Dessert:**  
Sticky toffee pudding  
Mince pie with ice cream or cream

**Coffee/tea**

*Three courses for £24 or two courses (no starter) for £20.  
Call Charlotte or Bev on 01934 815584*



# Things slowly return to normal at Queens

Things are slowly starting to get back to normal at the Queens Arms. More people are feeling confident about ordering at the bar and coming inside. We do ask only two people come to the bar at any one time so that people feel safe.

We have also taken the yellow and black lines off the floor – we trust people will respect the one metre distance and will adhere to it for everyone's safety.

It has been a busy couple of months with the holiday season with us and we have welcomed a lot of people who are walking and visiting the area. It's always lovely to meet new people!

The end cover for the back courtyard has now arrived and just needs putting up. This will ensure that when the nights start drawing in and it gets a bit chilly the wind won't blow up through the courtyard.

Plans are already being made for the Christmas Pantomime and everyone is really excited and looking forward to it, especially because it had to be cancelled last year. It is due to take place on 19 December at 6pm so make sure you have the date in your diaries.

The popular Open Mic nights are also back and our first one was really good, so thank you especially to Jordan, Mike and Charlie for making the evening so special. If you haven't been along, you are missing a really good evening of live music.

We met some lovely people who came along to the Open Mic, including Megan and Rob who have recently moved into the village – Rob is in a band called 52<sup>nd</sup> State, which is a six-

piece Americana/New Country band and we are trying to find a date soon when they can come and play in the back courtyard.

Keep an eye on Facebook and the A-boards for further information about dates. We are also hoping to get the quiz nights up and running again with the money raised going to local clubs.

The meat raffle is still popular and we would like to thank everyone who supports it. The meat is lovely and comes from the butcher at the Bleadon Farm Shop so it is well worth winning.

The Green Eye Motorcycles Charity Interesting Bike Show was a huge success and raised £300 for Cancer Research. It was fantastic to see all the different motorbikes and meet the lovely people who brought them. We

were really lucky with the weather and it was a great day with bikes, banter and a barbecue. Hopefully we will have another one in six months' time.

We have welcomed Jess, Alistair, Drew, Grace and Scarlett to the team in the last few months. Jess will be doing some bar work and some chef hours in the kitchen, working alongside Pete, so that we can expand our food offering. Alistair is doing some shifts behind the bar and Drew is working in the washing up kitchen. Grace and Scarlett are doing some waitressing.

Our flowers got a bit bashed about by the heavy rain and winds this summer, but they have managed to survive and we are waiting to hear how we got on in the Butcombe in Bloom and the Bleadon in Bloom commercial building competitions.

So, as things get back to being a bit more normal, we have lots of things to look forward to and we look forward to seeing you all soon.



# Farewell to outgoing croquet club treasurer

## Weston Croquet Club

As a club, we were dealt a blow when Bleadon resident Brian Robinson resigned as our treasurer, a role he completed with outstanding efficiency for more than 10 years. Brian also represented the club's teams in all levels of croquet and he remains within the club, playing socially with his wife Glenys.

With Covid-19 restrictions very much in place as our season started, we pulled out of regional league matches and opted for an internal summer league competition.

This has proved to be a successful substitute playing each weekend through the summer. We have continued with our annual club competitions starting with the ever popular Red, Whites & Blues. Always a successful day, the year Blue being the winning team.

The Daphne Holland Shield, a mixed competition run over one day with a best-of-three game final, was won this year by Garry Searle.

A short association croquet competition was won by past-chairman Jeanette Stuchbery.

Going away to play Ripon Croquet Club Yorkshire in the quarter final of the Croquet Associations prestigious Federation Cup, our golf croquet team returned victorious and now play Phyllis Court of Henley in the semi-final at Cheltenham, a neutral location, the date of which is yet to be agreed.

Jan Scotchmer



# BLEADON SHOPS

**T**he demise of the High Street' is a phrase we are all getting used to hearing these days, but of course this isn't a new thing.

Throughout history trading methods have changed, with businesses and shops coming and going as modern fashions and trends have supplanted old ones.

Over the years, large supermarkets have all but replaced the small corner shops and open-air markets and independent traders are few and far between.

**BUT**, even the retail giants beloved by today's shoppers are having to adjust to competition from online shopping, and are increasingly following the maxim 'if you can't beat 'em join 'em, or face closure. And all in just under 100 years.

At one time Bleadon village could boast several shops and many businesses; a butcher, a baker and if not a candlestick maker as such, a blacksmith who could probably have fashioned something similar!

There was an assortment of shops selling just about anything and everything, which between the wars a Bleadon shopper could want or need.

To go on a shopping excursion to Weston-super-Mare, on a bus or perhaps on the train, was a rare event and you really had to want something special like new clothes or shoes.

If we take a short trip back in time to Bleadon in the 1930s, on the corner of Bridge Road and the newly constructed A370 was Mr Vinson's shop.

He sold all manner of ironmongery from household pots and pans to farm implements and gardening tools, also paraffin and fuel for heating purposes and here accumulators could be charged to power the new fangled wireless (millennials go Google it)!

Nowadays, this is where we find Bridge Garage, and, on the opposite corner, where the Vinson



Mr Vinson outside his hardware stores at the junction of Bridge Road and the new A370.

family once lived and played tennis, there is now the very 21st century Escape Hair and Beauty Salon.

Heading into the village along Bridge Road, just before the quarry, was a small shop owned by Mrs Luscombe.

She sold groceries, which were carefully weighed out and popped into paper bags or wrapped in greaseproof paper, or in the case of vegetables tipped straight into your basket. She also sold sweets for the children and cakes which were homemade.

Post-war, this shop became the Fare Stores, selling more or less the same produce. Sadly, it eventually closed when the number of customers dwindled and income was not sufficient to support a family business.

Next to the shop was a police house where a succession of local 'bobbies' lived. Older residents still remember the policeman cycling around making sure all was safe and as it should be.

Along past the quarry, now also closed, there was a small pub called The Victoria which sold cider and ale which you could buy by the jug.

Before we leave Bridge Road, it is worth a mention that across the main road at Riverside lived Edwin Gilson and his sister Hetty.

He was a master carpenter and made, among other things, hay wagons which he painted red and blue. He was also the local undertaker and constructed coffins when required to do so.

Hetty made lace, like many of her generation and occasionally sold pieces to supplement the family income.

If we now walk into the village up the Main Street, (later becoming Coronation Road) past the village pump, we arrive at Mulberry Lane where the tea rooms could once be found.



One of the earliest photos of the Post Office—pre-World War One.



The only record of Mrs Luscombe's shop in Bridge Road.

Nearby was The Forge, where the blacksmith Mr Parker carried out his business, and just round the corner was the bakery and dairy run by Mr Purcell.

On the opposite side of the road at the top of Rectory Lane and before the Queen's Arms Hotel, was a general shop run by Mrs Francis. Post-war this became the Newbay Stores, but as time went by this eventually closed and became a residence.

By the village cross was the post and telegraph office, quite small when it was built originally but later enlarged to become another general shop and newsagents.

Beyond the church cottages was a garage with petrol pumps and a motor repair business. Other village shops included a farm outlet halfway up Celtic Way and another store at Hillecote run by Joyce Jenkins.

As well as these shops, there were haulage businesses owned by the Goodall family, and the Bindings, a laundry and Willett's corn merchants (now Bleadon Mill).

Over the years there were other traders who sadly were forced to close as they simply could not compete with the bigger retail outlets Weston had to offer.

Also better roads and transport systems meant it was easier for people to shop in town, where of course there was more choice. Market gardening, once a big business in Bleadon, also became unprofitable and parcels of land were sold for the building of houses and bungalows.

The last shop to close its doors in the early 2000s, to the dismay of the entire village, was the post office. It was at this time that small post offices were being closed almost weekly as it was thought they were unprofitable, after much petitioning, however, in 2005 a new post office was approved and, along with a farm shop, was opened at Purn Farm by Alistair House; this has since grown into the thriving

business that we know today.

Later a cafe was added, much used by walkers, cyclists and villagers alike. Who doesn't like the chance of an all-day breakfast and a great cup of coffee?

So, as the demand for business units has grown, this particular area, once the dairy, has become quite a hub and supports many new modern-day enterprises.

So, has 21st century requirements replaced those of the 20th century? Well almost! In the space of 100 years, shops have become houses, houses have become holiday lets, farms have become pubs and business units, orchards and meadows have been taken over for housing, and Bleadon, with a big nod to the ever-growing leisure industry, now has an internationally-recognised holiday park by the river (originally Purn Farm Caravan Park), built on what was once accommodation land.

Luckily, however, some land is still used for the grazing of livestock and the growing of crops and with the planting of new apple trees along Shiplate Road for cider is once again on the up and up.

**Some traditions will never die, thank goodness!**



Two views of Newbay Stores (bottom is the shop before it became the stores).

# North Somerset Arts Week is back!

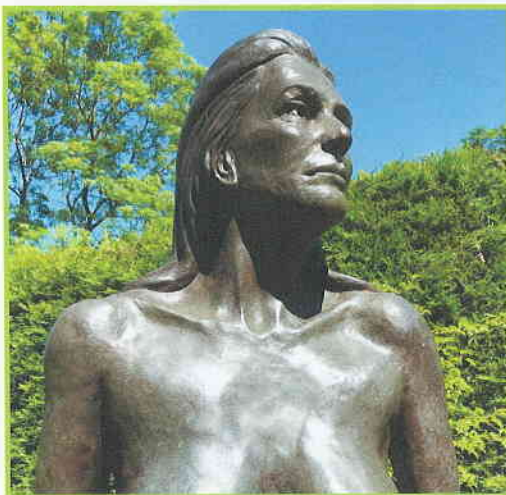
by Claire Gutsell

**F**our interesting artists will be displaying their work in Bleadon during North Somerset Arts Week, which takes place between 10-19 September.

The artists include two Bleadon residents, Claire Gutsell and Sonya Wilkins, as well as two other local artists, Rachel Bond and Nick Whiting. The exhibition takes place at the Made In Clay studio, which sits on the Purn House Farm estate behind the Post Office.

Claire is a potter and digital designer who produces a wide range of work inspired by local landscapes and nature. As well as ceramic bowls and sculptural pieces, she creates prints of local landmarks and a range of candles featuring her designs.

Sonya uses real leaves to produce striking pieces, including unique tableware and sculptural wall art as well as jewellery. Her work has been featured on television including in The Great British Menu, where the winning chef used her tableware.



Rachel is a ceramicist whose inspiration comes from science, domestic functionality and form. She cre-

ates functional homewares alongside large one-off pieces that reflect her interest in the scientific world.



Nick is a sculptor who focuses on the human form, creating pieces that range from miniatures to life-size sculptures. He often works in bronze resin to create pieces that can be displayed outside, some of which will be featured at the exhibition.

Made In Clay is a working pottery so this is a great opportunity to meet artists and see the environment in which they work.

The artists would love to welcome members of the Bleadon community to have a look around.

The exhibition is open between 10am and 4pm every day between 10th and 19th September apart from the 13th and 14th. Unit 7, Purn House Farm, Purn Way, Bleadon. Follow the pink flags. More information about all artists and venues taking part is available at [www.northsomersetarts.org](http://www.northsomersetarts.org).

Why not come on down, have a look around and then treat yourself to coffee and cake in the café!

The exhibition is open between 10am and 4pm every day between 10th and 19th September apart from the 13th and 14th. Unit 7, Purn House Farm, Purn Way, Bleadon. Follow the pink flags. More information about all artists and venues taking part is available at [www.northsomersetarts.org](http://www.northsomersetarts.org).



## Mark Howe

**Gardening Services**

**9 Malvern Road, Weston**

Regular grass cutting

Hedges and trees cut

Fences erected or repaired

Sheds erected or repaired

**GET IN TOUCH TODAY!**

01934 413594

07773 272003

Turfing

Fence painting

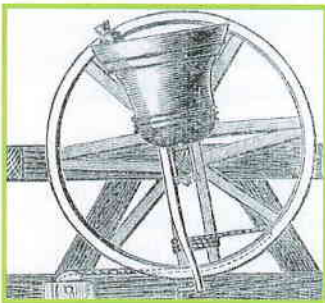
Power washing

# Some things happen and some things don't

by Rev. Tim Erridge

As with so many things in recent months, Bleadon Church has had a rather 'two steps forward and one step back' sort of feel!

Our planned Open Tower Fun Day on 7 August, happened in a very simplified way as wind and rain stopped us opening the tower, but nonetheless simple conversation over a cup of tea was a real tonic. Let's hope there is no rain for the next one on 4th Sept. Do come and see. Having lost a number of fundraising events over the last year we do need the income. Please do help if you can.



We have started hosting a Monday Craft and Chat time, to give an opportunity, especially for those who live alone, to meet up safely. It has been so good to see people simply having a chance to talk face to face, but also sobering to hear about some of the hardships of the last year that have remained untold till recently.

Recently, one person at one of these sessions said: "We go to hospital to get treatment, but we come home to heal." Home can be our local community as much as our house.

I think August has been much more wet than we all hoped it would be. Thank you to all of you who have passed on very encouraging comments about our outdoor services. It is so good to know that so many of you like to hear us 'on the wind.'

We hope to have many more of our services outside before the cool of autumn comes and simply need the rain to stay away a bit more—but we will see.

I know many of you heard some sound from the church bells back one day in March.

Again it was a real encouragement to get positive

comments and questions asking if the bells can now ring.

Sadly the ringing on 20 March was due to checking and maintenance work, rather than the start of regular ringing.

Indeed it highlighted that the ancient wooden frame which holds the bells is getting near the end of its life. The six bells together weigh approximately 1.5 tonnes and currently hang on an oak frame which is about 300 years old.

It's not done badly, and we have been advised that the bells can still ring safely occasionally for short periods of time, but it may well cost about £30,000 to get them in full working order.

We have been asked if they can ring as part of the Jubilee celebrations next year. As things stand, yes, maybe for a short time, but we also need people in good health to ring them too.

As we look forward to autumn, we think of harvest celebrations and beyond.

This year, with the COP26 happening in the UK, the need for us to consider Climate Change is firmly in the spotlight.

The Church will be specially focusing on green issues during September and October, starting with an outdoor Harvest Orchard Blessing in Thatcher's Shiplate Orchards on Sunday, 12

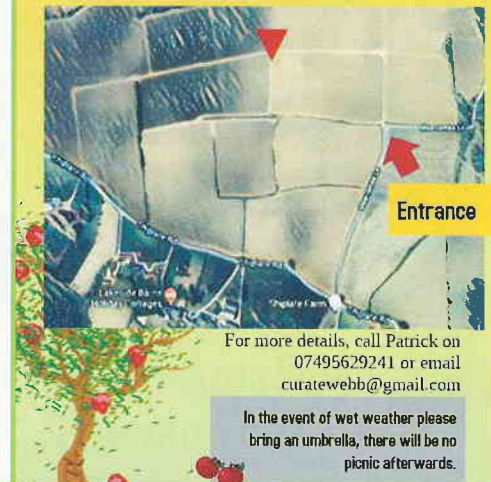
A St. Peter's and St. Paul's Creationtide event

**HARVEST BLESSING AT**

*The Orchard*

11am - 12th September, 2021

Thatcher's orchard on Shiplate Road



For more details, call Patrick on 07495629241 or email [curatewebb@gmail.com](mailto:curatewebb@gmail.com)

In the event of wet weather please bring an umbrella, there will be no picnic afterwards.

## Summer show cancelled but exciting times ahead

Bleadon Horticultural Society

Due to the ongoing pandemic, our Annual Summer Show will not be taking place in September 2021. Please contact Libby Boucher regarding the return of any outstanding trophies from the previous Spring or Summer shows (07966 563495).

The Bleadon Horticultural Society evening meetings will start again on Tuesday, 19 October at 7.30pm in the Coronation Hall, in Coronation Road. There will be a presentation by Gina Merrett-Smith on the Victorian botanic artist, Marianne North.

Miss North travelled the world solo to paint plants in their natural settings and her paintings are on permanent display in the Marianne North Gallery at Kew Gardens.

### Dates for the diary!

- Tuesday, 16 November – Nerines – an illustrated talk by Jonny Hartnell
- Tuesday, 21 November – Quiz and social with pot-luck supper.
- (All are welcome and entry is £2 on the door)
- Saturday, 5 March – 46<sup>th</sup> Annual Spring Show

Rose Benjamin and Libby Boucher

# Bleadon in Bloom—it's competition time!

By Robin Flavell

The Bleadon in Bloom team are planning a makeover of the Jubilee flower bed at the Bleadon Coronation Hall.

The original bed was created for the Queen's Silver Jubilee in 1977, so what better way to celebrate the Platinum Jubilee next year?

Are you a keen gardener, and fancy a challenge? We're looking for creative designs for the new Jubilee garden. As it's for Britain in Bloom we're looking for a range of plants which will flower from spring through to autumn.

We'd like to use hardy plants (hardy annuals, perennials and bulbs), as this is a more sustainable option. We don't want to rely on annual bedding plants which need to be replaced every year.

We'd like a few plants for all year-round interest but don't want to fill the bed with large bushes or trees, so leaving room for plenty of flowers.

There may be some bushes we can keep from the current garden, that's up to you to have a look and decide.

Please submit your design to [robinflavell@yahoo.com](mailto:robinflavell@yahoo.com) before 31 October showing the following:

- A diagram of how the planting will be laid out
- A list of the plants you have



chosen and why. Please highlight which plants you've chosen for spring, early summer and late summer to autumn interest.

There will be a small prize for the winner, plus the chance to see your garden come to life next year. We look forward to seeing all of your designs.

## Plant a Tree for the Jubilee

The **Queen's Green Canopy (QGC)** is a UK-wide tree planting initiative created to mark Her Majesty's Platinum Jubilee, by inviting people to "Plant a Tree for the Jubilee." Find out more here: [The Queen's Green Canopy \(queensgreencanopy.org\)](http://TheQueen'sGreenCanopy(queensgreencanopy.org))

We are looking for places in Bleadon to plant trees to contribute to the Queen's Green Canopy. If you have an idea or some land you would like to see trees on, please get in touch.

If you want to plant a tree in your own garden, there's lots of useful information on the website. You'll be able to add your tree to the QGC map when the planting season starts this October. Let's get Bleadon on the map!

## Bleadon in Bloom contacts

Follow us on Facebook – **Bleadon in Bloom**

Email Kirsten Hemingway [writ-er@kirstenhemingway.co.uk](mailto:writ-er@kirstenhemingway.co.uk) or Robin Flavell [robinflavell@yahoo.com](mailto:robinflavell@yahoo.com) and join our WhatsApp group.

## Quizzing with Les Masters — the answers!

We hope you have enjoyed pounding the pavements of Bleadon to uncover the answers to Les Master's brain-bending conundrums. Now it is time for the answers! How did you score?

1. There are three instances of houses with the same name in different parts of the village: Myrtle Cottage, Apple Tree Cottage and Newlands. Where are the six locations?

- **Myrtle Cottage: School Lane and Celtic Way.**
- **Apple Tree Cottage: School Lane and the corner of Purn Way and Chestnut Lane**
- **Newlands: Purn Way and the corner of Shiplate Road and Birch Avenue**

2. There is a Mulberry House in Mulberry Lane. There is another about a mile away. Where? **When the Plaisters bought their house on the south side of Roman Road, they re-named it Mulberry House**

3. Two houses have clearly foreign names: Shalom and Kia Ora. Where are they? **Kia Ora is at the entrance to the church yard while Shalom is in Purn Way.**

4. Where are three houses whose names end in mead? **Charmead is in Bleadon Road, Sunny-mead is in Purn Way, Rivermead is next to the footpath from Rectory Lane to the shop.**

5. In the parish of Bleadon, how many bridges are there over the railway? And how many over the river? **There are seven bridges in total, three over the railway (one over the A370 and two in Accommodation Road) and four over the river.**

# What is happening to all of Bleadon's trees?

By Rev. Tim Erridge

A few weeks ago I found myself in conversation with someone who was very troubled about the presence of Ash Dieback Disease in local trees and the wide range of contrasting local opinions, action and advice.

At a time when most of us have had our fill of unclear rationales and information relating to Covid management measures, we now also face a 'pandemic for our trees' as another local person described it to me recently. I have already seen this causing conflict in our community and hope I might be able to help us head forward with less conflict and more understanding.

This article is definitely the opening of a conversation, not the conclusion of it. Please do join with me in working to find the best way forward that we can.

The conversations I have had about this so far have only scratched the surface, but I think one important 'elephant in the room' has already emerged, this is bereavement. We love our trees, and whether we own trees

which have become unsafe or see a view from our window where trees have been removed, we commonly experience loss, and loss is never easy to live with.

Like many of you, I remember the spread of Dutch Elm Disease and the death of many big prominent trees in the 1970s. Today, people who are younger than 40 will never have seen a mature Elm Tree 'in the flesh', because they are all now gone and have been for quite some years.

I became a teenager in the 1970s and lived in a coastal village in Essex. As a small child I almost always came to the village or left it via the two main roads which were both lined with huge mature Elm Trees. A majestic and beautiful sight.

By 1980 I had seen them all wither, die and be cut down. I know that the bereavement of that loss is still in me, I am feeling it now as I write this.

How can we best help each other to live with bereavement in the best way we can here and now? There are so many things that many of us are grieving at present. Maybe, for some of us, dying Ash Trees could be 'the straw that breaks

the camel's back'!

In times of bereavement we feel different inside, sometimes in ways we don't see till we find ourselves reacting out of character. Sometimes in ways that can cause real harm to others and ourselves.

The ways we live through bereavement are very personal and personal genuineness is an essential element of healthy bereavement. Though a universal first step to coping with this well is to notice its presence and acknowledge that we are in it together. To notice that almost universally, even when our action choices may be contrasting, our inner loss can be very similar. When we recognise this we make space for compassion to grow.

I offer these short notes in the hope that they will help us. I want to help us find the best path forward that we can together. If you think that conversation with me, either individually or in a group would be helpful, please do get in touch, I want to help that happen.

With Hope, Tim.

## MOBILITY EQUIPMENT

Scooters  
Powerchairs  
Wheelchairs  
Stairlifts  
Rise & Recline Chairs  
Walking Aids / Bathroom Aids  
Pressure Cushions  
Incontinence Products  
Cosyfeet Slippers & Shoes  
We Service & Repair Scooters etc

0% finance available on selected scooters

# Wilmott mobility

6 Pages Court  
High Street  
Yatton  
BS49 4EG

Ample free parking but if you cannot get to us we are happy to come to you!

Tel: 01934 838363  
[www.wilmottmobility.co.uk](http://www.wilmottmobility.co.uk)



Avon and Somerset Police  
NEIGHBOURHOOD POLICING

## Talk to us

Join your Neighbourhood Policing team at the Post Office in Purn Way, Bleadon on the following dates:

Wednesday, 8 September, Wednesday 13 October

Wednesday 3 November, Wednesday 1 December

Drop in and speak to PCSO Michael Benfield!

Whether you want advice on how to protect your belongings, more information about the work we are doing in your area or you want to raise a concern about an issue in your community, PCSO Benfield from your Neighbourhood Policing team will be on-hand to help.

Time: 9-10am

For more information please visit:  
[www.avonandsomerset.police.uk/your-area](http://www.avonandsomerset.police.uk/your-area)

Follow us on



# Blackberries are my favourite! - SWWR

By Pauline Kidner

September brings us cooler days and the fruits in the hedgerow make foraging easier for lots of species. Badgers love blackberries and many, many years ago, when I used to walk my badger cubs, I had to wait for ages until they had eventually had enough of the ones in their reach before we could continue our walk!

I love the damp misty mornings with the pattern of hundreds of cobwebs spanning the lawns. There's much to be done to start preparing the garden for winter.

As the aviaries and grassed enclosures empty, it's time to get the ground prepared for reseeded and maintenance of fences and wire, but it will be a few weeks before they will all become redundant.

It is a relief from the very hot days we experienced in the summer, when the heat makes rescues even more urgent when casualties are out in full sun.

One rescue which had to be carried out as soon as possible was a badger that had fallen from a



stone wall on to the roof of a garage.

The badger was already tearing up the tiles looking for a way to escape. On arrival our response drivers realised it was a situation where we were going to need the help of the fire brigade.

They were very quick to attend, and the badger was soon in a cage and on its way to Secret World Wildlife Rescue (SWWR).

Two barn owlets were rescued when they fell from their nest site. One sibling had been found dead which alerted the land-owners that there was a problem.

This was because sadly the parents were no longer returning to them with food.

They soon recovered when given some food and Dawn and Dusk are now in an aviary building up muscle ready for their release. So, lots of animals have been successfully given a second chance back in the wild. If you need advice or think you may have a release site, please contact us on 01278 783250.

## Bleadon WI

Bleadon WI members met on Zoon until July 2021 and have had interesting recent talks on pearls and Hampton Court.

Our members have been delighted to start meeting again in-person with a trip on the Matthew on a beautiful evening, wine tasting at Aldwick Vineyard, book discussions in members' gardens and

walks in Cheddar and Clevedon.

Our skittles team has also just won their first match!

We have had a break for the month of August but we look forward to hopefully meeting in-person at the Coronation Hall in September 2021.

Bleadon WI membership is currently full. If ladies would like to be added to the waiting list or join as a guest, please email [bleadonwi@hotmail.co.uk](mailto:bleadonwi@hotmail.co.uk)

Elaine Mellor



# Dementia wristbands handed out by police

**M**ore than 1,000 wearable tech wristbands have now been handed out as part of the Avon and Somerset Dementia Safeguarding Scheme, launched last year in collaboration with the Senior Citizen Liaison Team Charity.

Using Near Field Communication (NFC) technology, the wristband stores essential information about the wearer, including their name and details of next of kin.

This information can be used by emergency services, health professionals or community members to get the wearer back to safety should they be found whilst lost or confused.

There are still plenty of wristbands available to the public and care homes, free of charge thanks to charitable funding.

Sgt Stuart King, who leads the

initiative in addition to his role as a response officer, said: "I have been overwhelmed with the positive attention and wider support this scheme has received from the public. To hear the positive feedback and reassurance that the scheme brings to families and the people living with Dementia makes it all worthwhile.

"I would like to thank Bristol Dementia Action Alliance Charity, Senior Citizen Liaison Team Charity, Wessex Water, Bristol Water and Western Power Distribution for the funding to purchase the NFC wristbands."

To apply for a wristband, visit the Dementia Safeguarding Scheme.

Further information can be found here. Further support for families affected by dementia is available at the Avon and Somerset Dementia Forum on Facebook or visit

[www.avonandsomerset.police.uk/](http://www.avonandsomerset.police.uk/)



**DOES YOUR GARDEN NEED SOME WORK DOING?**



- ❖ Gates
- ❖ Fencing (All types)
- ❖ Pergolas (including polycarbonate roofing)
- ❖ Decking (timber & composite)
- ❖ Artificial grass or turf
- ❖ Patios or decorative stone
- ❖ Garden structures/landscaping

**ARE YOU LOOKING FOR A PROFESSIONAL REMOVAL COMPANY?**



- ❖ Garden Waste
- ❖ Clearances
- ❖ Single item delivery/collection
- ❖ Full house move

**We are fully licensed & Insured for peace of mind**

**CALL: 07882142351**

**EMAIL: [1stratemoversandgardens@gmail.com](mailto:1stratemoversandgardens@gmail.com)**

**WEBSITE: [WWW.1stRateMoversandGardens.co.uk](http://WWW.1stRateMoversandGardens.co.uk)**

## Bleadon Belles

**A**t last good news for all choirs who are now finally able to come out of lockdown!

However, the Bleadon Belles WI Choir, who have a break in August, are very much looking forward to coming back together again in the village hall in September.

Meeting at the new time of 7.30pm on a Tuesday evening, the choir will be busy practicing to put on some live performances once again.

We would also like to wish our musical Director Naomi and her new husband many congratulations and best wishes from the whole choir on their wedding during the summer break.

**Karen Perrett, Chairperson**

# Walk around South Hellenge and South Hill

by Jo Jones and Maggie Heath

**A** two-mile, approximately one-hour walk taking in Hellenge Hill Nature Reserve and South Hill. There are occasionally cattle, donkeys, sheep or horses in the fields. Please follow the country code keeping dogs under control (picking up their poo) and shutting all gates.

**Equipment:** Walking shoes/boots/poles if required. Mostly gentle climb, one stone stile, little bit rough under foot in parts.

Starting at the Coronation Halls, turn left out of the car park, walk through the church yard (1), and left at the far end into Old School Lane. At the top of the lane turn right and walk up Shiplate Road. Take the lane on the left at Homestead Farm (2). At the top of the lane, possibly spotting alpacas (3) in the field on your right, go through the kissing gate onto Hellenge Hill.

At the way mark and information board (4) bear right, keeping left at the fork in the path as you climb the hill to the next gate in the trees. From the gate, follow the path ahead up to the stone stile. Keep a look out for wild flowers and butterflies on your way, and listen to the skylarks in spring/early summer. Buzzards and ravens fly overhead.

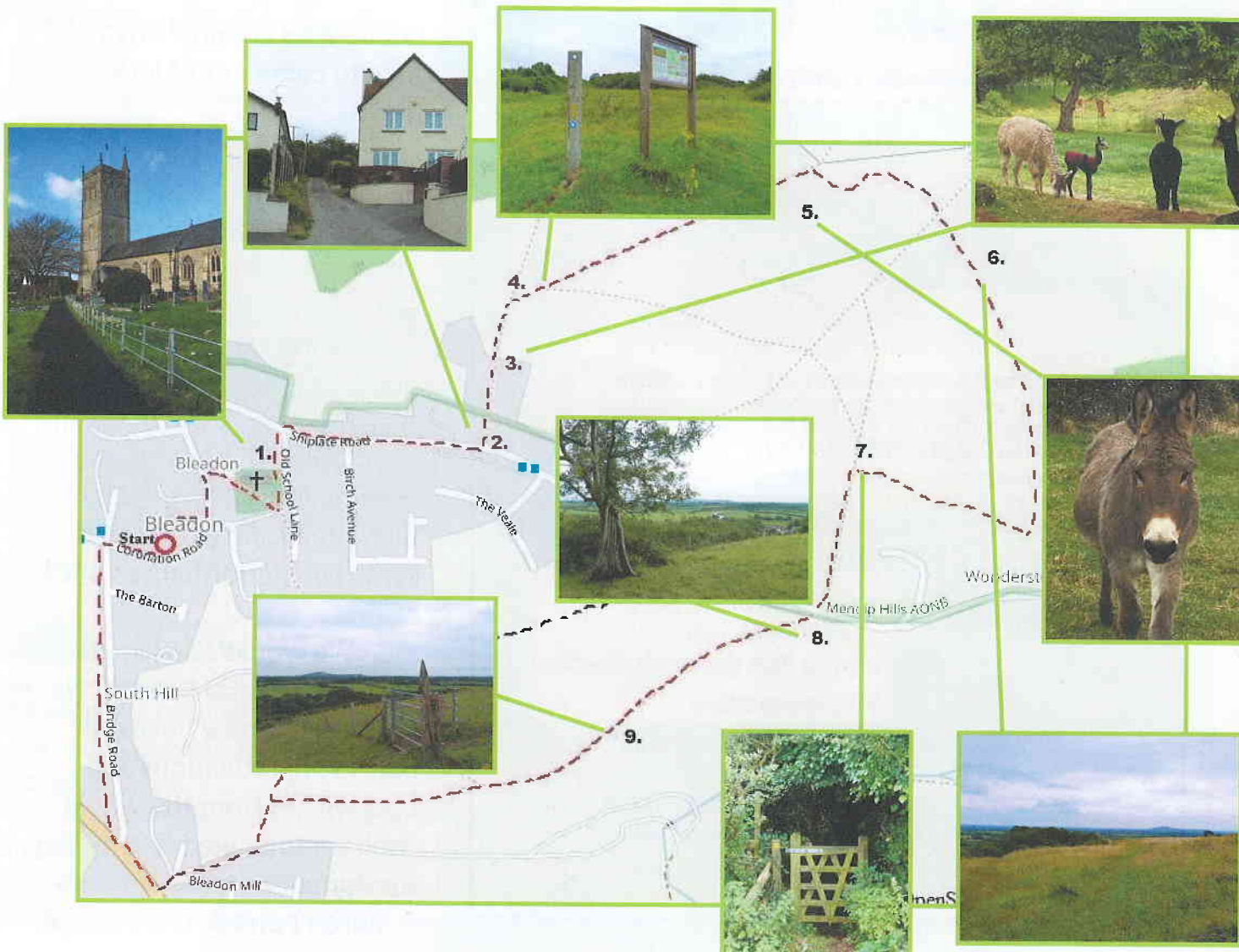
Do not cross the stone stile on your left (that is a longer

walk for another day) but follow the path down and up the dip to enjoy the views at the top of your walk. On a clear day you can see Thatcher's cider orchards and Glastonbury Tor to your left, Brent Knoll ahead and the Bristol Channel to the right. This meadow has many butterflies in summer including marbled white, skipper, meadow brown, gate keeper and common blue.

Follow the path ahead to the far side of the field then bear right heading for Brent Knoll (6) as you gently descend. Turn right as you come to the hedge and follow it until you find the gate in the trees (7).

Through the gate, take the wooded path down to Shiplate Road. If the large gate is closed there are wooden steps down to the road. Cross the road and negotiate the stone stile. (If the stile is a problem there is an alternative route onto South Hill further down Shiplate Road).

You are now on South Hill with views over South Hill Farm, the levels and the River Axe to Brent Knoll (8). Take the path diagonally right across the hill to the next kissing gate (9). Continue in the same westerly direction to the far side of the field and the final kissing gate out of the field onto the lane and Bridgwater Road. Turn right at Bridge Garage onto Bridge Road. Water voles live here (spot their holes in the bank of the rhyne), and kingfishers, little egret and heron have also been seen. Return to the car park.



# Bleadon man raises £10,000 for RNLI in son's memory

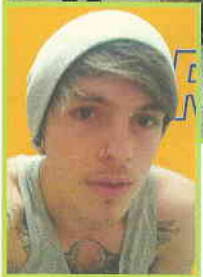
by Ellie Young

**B**leadon Hill resident Phil Bindon is riding high after completing a 200-mile cycle in challenge in aid of the RNLI in memory of his son.

Passionate fisherman Mike was just 23 when he was swept out to sea off the coast of Cornwall in January 2014 after being hit by a freak wave. His friend managed to call the emergency services and the RNLI were on the scene within 15 minutes with air support. Despite extensive searches, Mike was never found.

Dad Phil has since campaigned on behalf of the RNLI to raise awareness and received an Inspiring Communicator Award in 2016.

After taking up cycling during lockdown in May last year, Phil set himself a challenge of riding Weston-super-Mare to Padstow over four days, stopping at RNLI stations along the way.



With the help of a donation from the Edenstone Foundation, plus the support of friends, family, colleagues, contractors, suppliers and more, he's beaten his target of raising £10,000.

Phil, who is a site manager for Edenstone Group, said: "I wouldn't have been able to do it without the support of the Edenstone Foundation. I can't thank them enough for their getting behind me, donating £1,500 towards the fundraising, providing cycling and accommodation along the route.

"I'm so pleased we reached the target and enjoyed the ride itself. I think Mike would have had a giggle and said 'silly dad what are you doing that for at your age'."

Phil was accompanied on the ride by friends, family and colleagues. The cyclists received a good reception at the RNLI stations along the route, welcomed with signs, beer and cream tea.

Phil explained: "The first day went well but on the second day we had a big elevation climb at Porlock Hill.



It's quite a steep elevation and when we went up the toll road there was a bit of cloud, wind and rain for about an hour."

"We had a bit of a hiccup in Ilfracombe when Matt's bike broke. We went round bike shops to try and fix it and looked at hiring one, but because he wanted to complete the ride he ended up buying a new bike."

Phil described leaving Clovelly as 'near impossible to ride' with some of the riders resorting to walking and pushing their bikes.

Phil added: "Bude to Rock along the coast road was tough on the last day and some of the hills were challenging – they were short hills but very steep. They were a challenge when we had four days cycling under our legs. By the end we were glad to see the last of the hills."

Phil undertook the mammoth challenge just 13 months after taking up cycling.

"It helped me get through furlough and lockdown, keeping me physically and mentally fit. I've lost two stone since Christmas training for the challenge – it's the lightest I've been for 40 years," Phil said.

"I haven't been out on the bike since the ride but I'm thinking of taking on annual challenge. Watch this space."



# Wildlife soak up sunshine during summertime

Heron. Picture: Penny Robinson



Green woodpecker. Picture: Richard Cole



Bees on the level. Picture: Mark Frisby



Moorhen in their nest. Picture: Peter Williams



Butterfly in village. Picture: Mark Frisby



Bee in foxglove. Picture: Peter Williams



Intimate nature. Picture: Mark Frisby



Mallard duck. Picture: Penny Robinson

Snails. Picture: Peter Williams



## Tricky Paws

**W**ow! We at Tricky paws are absolutely thrilled to see how popular our training classes are in Bleadon!

We were excited to begin puppy training in this beautiful village back in June and we have not been disappointed!

A huge thank you to Bleadon Youth Club for allowing us to train there and thank you to the lovely locals who have gone out of their way to make us feel welcome.

We are hoping to run different classes in the near future, so please keep your eyes peeled!

Tricky Paws offer courses for puppies of all ages as well as private tuition and home visits.

To find out more about the sessions and to get your pup signed up, visit [www.trickypaws.com](http://www.trickypaws.com), email [trickypaw-](mailto:trickypaw-)

# Take care of the cows, and they will take care of Bleadon Hill

By Kirsten Hemingway

**P**urn Hill is loved by dog walkers from both Bleadon and Bleadon Hill and probably even further afield. It is also an SSSI (Special Site of Scientific Interest) with vital wildlife significance, being home to three plants that are nationally rare or threatened. These are honewort and Somerset hair-grass, as well as white rock rose, which is only found at this and one other site in the UK.

That's why the site needs very careful management by Avon Wildlife Trust, and a key tool in their arsenal is cattle. Grazing can play a vital role in creating a richly diverse habitat.

Thanks to their munching and trampling as they wander across the land, cows create the perfect conditions for a whole host of plant and insect species. With the latest team of bovine grazers coming to the hill in September, I wanted to speak up now and ensure we as a community look after them.

The most important things we can do to achieve this are to keep our dogs on a lead, clear up their mess, and take it away. Dog faeces left on fields containing cattle can expose cows to a parasitic infection that may result in early abortions – in fact, it is cited as one of the biggest causes of abortion in cattle.

Dog poo left in bags is just as problematic. Cows and calves find it irresistible, but it's also deadly. Plus, there is the added complexity of the small quarry on the site: a cow could be chased over the cliff edge. Sadly, this has happened in the past.

These challenges have made it very difficult for the Trust to find a farmer who's willing to graze their cows on the Hill – until now.

Local vet student Heather Hemingway-Arnold is a familiar face in Bleadon, having grown up in the village.

Specialising in cows, she has now bought a small herd of three heifers and one steer, who will shortly be coming 'home' to Purn Hill. One of the heifers is pregnant, and they also have two calves. Heather and her partner Sam are keen to keep them close by in the village, and the couple are happy to have the chance to improve the ecology of this beautiful site. Most importantly, Heather is very hopeful that the people who share her love of the site will look after her cows.

Both AWT and farmers understand that ramblers enjoy walking their dogs off the lead. Walkers may say that the cows are far away from them, or their dogs have done their business in the long grass. But cows can move quickly and without warning, while the long grass is generally what the cows will eat. That's why Purn Hill is a 'dogs on leads' zone, in which people are also asked to



clear up after their dogs and take the bags away.

The truth is, grazing cows is a great way to maintain the sustainability of our special site. Please look after Heather's cows when they come home to Purn Hill.

 **Tricky Paws**  
Puppy and Dog Training

Where dogs  
are part of  
the family

New puppy & dog training  
opportunities in Bleadon

Group Classes | Private Tuition  
Home Visits | Behaviour Consultations

*get off on the right paw!*

**HAPPY PUPPY COURSE** for puppies under 20 weeks of age  
**GETTING STARTED COURSE** for beginners over 5 months of age  
**GROUP CLASS BLEADON** Bleadon Youth Centre - Tuesday evenings  
**GROUP CLASS BURNHAM ON SEA** BAY Centre - Sunday afternoons

**COURSES**  
£66 for six weeks  
Includes official  
Tricky Paws rosette  
and certificate on  
completion

Reward-based & force-free training methods | Classes are interactive, fun & informative  
Small group sizes | Welcoming, friendly & professional service  
Basic obedience, socialisation, focus on owners, confidence building, bond building

trickypaws.com | trickypawsuk@gmail.com | 07951 439680   

# Bleadon Youth Club so glad to be back

After a four week break in August the Thursday evening youth club is back and Banging.

When Covid restrictions began to be lifted in April we were able to see a gradual return to regular activity at the club. Outside in the play area at first to ensure the safety of all involved. The youngsters were keen to get back inside to start enjoying their games and social activities, so after Easter they returned to a mix of indoor and outdoor activities under the careful stewardship of the three YMCA youth workers.

Clearly, they were enjoying themselves because number attending quickly rose to around 25 youngsters each Thursday evening.

That's how things remained up to the summer break. The YMCA youth workers organised games, activities, baking sessions and gave advice on many of the everyday challenges that concern our youngsters.

Two additional daytime club sessions were run in Bleadon during the summer holiday. Giving the youngsters a chance to get active and be sociable. Plus, for parents, a welcome break.

The regular Thursday evening youth club returned at 7pm on 2nd September.

Our club is open to all young people aged 10 to 17. It provides an opportunity for youngsters to socialise and play for a couple of hours, away from parents, but still under the watchful eye of qualified youth leaders.

The weekly subscription is just £1.50. Most youngsters seem to spend more than that on the tuck! All attendees need to Register their membership. That's a job for parents to do.

**If you have a youngster who wants to join the club simply scan the QR code below and complete the on-line form to register your interest. The YMCA team will then send you a Bleadon Youth Club Registration form.**



## Now we need your help

Bleadon Youth Club is a charitable Trust managed by a small team of local volunteers in the form of a management committee. The committee is responsible for looking after the youth centre building and employs the YMCA to run the weekly youth club on its behalf. The committee works in partnership with the YMCA, but does not get involved in the day-to-day running of the Thursday youth club sessions. The main function of the management committee is the maintenance and management of the building. Ensuring that it is a safe and welcoming environment for all of its users. We raise significant funds through village events and generate income by letting out the building to other members of our community.

We need more community minded adults to join us. It is not an onerous task. We usually meet once every two months for around an hour. Plus we will be looking for support with the fun-raising (sic).

**If you can help please contact Keith Pyke on 01934 813127 or email: [keith.pyke@btopenworld.com](mailto:keith.pyke@btopenworld.com)**

# Speak up to stop rural crime.

Criminals gangs exploit our local wildlife, environment and communities. Your voice can make a difference.



Have information on rural crime?  
You can speak up and remain  
100% anonymous. Always.

[crimestoppers-uk.org](http://crimestoppers-uk.org)

**CrimeStoppers.**

**0800 555 111**

100% anonymous. Always.

Campaign  
partners



# Thatchers' Redstreak to return

By Penny Adair

Each year, we unveil limited edition bottled ciders in our Cider Barn collection. In a recent poll, we asked our customers which of our past Cider Barn blends they would like to see produced once again this harvest.



Thatchers Redstreak topped the poll with 27% of the votes. Popular winner Redstreak is an 8.4% single variety cider made from local Somerset Redstreak apples in fact, many of the apples come from our orchards at Shiplate.

It's a traditional bittersweet apple variety, high in tannin and big on flavour, creating a bold, peppery cider with a spicy apple pie flavour, smooth feel and deep rich colour.

Our cider makers use the traditional cuvege technique for Redstreak, where the apples are milled and then held for a day before pressing out the juice, so

developing the best flavour for this variety.

Somerset Redstreak apples will begin to arrive at Myrtle Farm for pressing at the end of September. The freshly pressed juice will then be fermented and bottled by November.

As well as topping the poll in the Battle of the Cider Barns, Redstreak was named Supreme Champion in the International Cider Challenge 2017, and was also voted the World's Best Sparkling Cider in the same year.

The results of the Battle of the Cider Barn poll are:

1. Redstreak
2. 458
3. Prince William
4. Morgan Sweet and Grenadier

Thatchers Head Cider Maker, Richard Johnson, said: "We're delighted to be pressing Redstreak again this year following such a close competition. The Somerset Redstreak apple is one of our favourites for cider making – and as well as being great addition to our blends, it makes a superb single variety cider, with its big and smooth character. It's a great choice for this year's Cider Barn range!"

Thatchers Redstreak will be available later this year online and at the Thatchers Cider Shop at Myrtle Farm.

THE BLEADON PLAYERS PRESENTS

It's  **BLEADON**   
*Good to be Back*

23RD - 25TH  
SEPTEMBER

BUY YOUR TICKETS AT  
[WWW.TICKETSOURCE.CO.UK/BLEADON-PLAYERS](http://WWW.TICKETSOURCE.CO.UK/BLEADON-PLAYERS)

NO TICKETS AVAILABLE AT  
THE POST OFFICE OR ON THE DOOR  
ONLY AVAILABLE ONLINE

[WWW.BLEADON-PLAYERS.CO.UK](http://WWW.BLEADON-PLAYERS.CO.UK)

## The Bleadon Players are back!

The local theatre group will be testing the waters after a long break and the actors and actresses will be coming to a Coronation Hall near you from 23-25 September at 7.30pm

The Bleadon Players will be performing three short plays, mainly to give as many acting opportunities as possible to our members after a long Covid-themed break. The smaller plays will also help smaller groups to isolate should isolation call for it!

It will be online tickets only this time to keep contact to a minimum, at a reduced price of £5.

The players will be putting together cabaret-style seating for attendees with tables and chairs and a reduced capacity.

Players' Peter Gibbon said: "It is all quite strange and, in many ways, this is a test event prior to returning with a bang for the annual Christmas pantomime in January."



# Puzzle Page answers and thanks

## Riddle me this?

1. A map
2. The man's son
3. A road

## Disclaimer

Bleadon Village News is published independently on behalf of Bleadon Parish Council. The views and comments are those of the Editor and contributors and not necessarily of the Parish Council.

5	3	4	6	7	8	9	1	2
6	7	2	1	9	5	3	4	8
1	9	8	3	4	2	5	6	7
8	5	9	7	6	1	4	2	3
4	2	6	8	5	3	7	9	1
7	1	3	9	2	4	8	5	6
9	6	1	5	3	7	2	8	4
2	8	7	4	1	9	6	3	5
3	4	5	2	8	6	1	7	9

## With thanks to...

- |                       |                   |
|-----------------------|-------------------|
| Gill Williams         | Pauline Kidner    |
| Bruce Poole           | Elaine Mellor     |
| Susan Dennyly         | Karen Perrett     |
| George Scott          | Maggie Heath      |
| Ann Davies            | Phil Bindon       |
| Charlotte House       | Mark Frisby       |
| Jo Jones              | Peter Williams    |
| Kerrie Jones          | Richard Cole      |
| Jan Scotchmer         | Kirsten Hemingway |
| Penny Robinson        | Keith Pyke        |
| Claire Gutsell        | Penny Adair       |
| Rev Tim Erridge       | Peter Gibbon      |
| Rose Benjamin         | Robin Flavell     |
| Libby Boucher         | Les Masters       |
| PCSO Michael Benfield |                   |

Thank you to everyone who has advertised with us for this edition.

1	F	I	2	V	E	3	M	I	4	L	E			5	B		6	S
	A		E						I			7	S	Y	R	U	P	
8	C	A	T	A	T	O	N	I	C						A			I
	E		E					G	A					9	N	O	R	
10	D	I	R	E				11	F	E	A	R	E	D				I
			A			12		R		R		E						T
13	W	A	N	D	E	R			14	W	R	E		15	C	K	S	
	I							16	S		S			O				
	L		17	A	N	A	N	A	S			18	O	N	U	19	S	
20	D	U	B			C				21	D							H
	E						22	T	E	A	D	A	N	C	E	R		
23	S	I	T	E	S				M		S			A				U
	T		S					24	H	I	G	H	C	L	U	B		

<b>Mon 6.45-7.45pm &amp; 8-9pm Jubilee Room</b>			
Marie Keele	Aerobics	01934 270853 / 07939 038071	mariekeele@hotmail.co.uk
<b>Mondays 10.30am-12.30pm Youth Centre</b>			
	U3A Recorder Group		harwoodlouse@hotmail.co.uk
<b>Tues 10.30-12.30 Coronation Hall</b>			
Tina Dodd	Art Class	01934 843660	sandtdodd@btinternet.com
<b>Tuesdays 6.30-8.30pm Youth Centre</b>			
	Tricky Paws		trickypawsuk@gmail.com
<b>Wednesdays 7.00-10.00pm Youth Centre</b>			
	VETS Table Tennis Club		ann@sandford-ca.co.uk
<b>Thursdays 7.00-9.00pm Youth Centre</b>			
	Bleadon Youth Club		keith.pyke@btoopenworld.com
<b>Thurs 10-12noon Jubilee Room</b>			
Stevie Rhodes	Bleadon Art Group	01934 813497	
<b>Mon 2-5pm Coronation Hall</b>			
Doug Norfolk	Bridge Club	01934 812128 / 07547 163862	dougn@btinternet.com
Judith Hutton	Bridge Club		judithhutton341@googlemail.com
<b>3rd Mondays 7-10pm Coronation Hall</b>			
Debbie Thorne	Holistic Therapy	07905 537118	debbiethorne37@hotmail.com
<b>Fridays 2-4pm Coronation Hall</b>			
Gordon Brown	Friendship	01934 811926	NO EMAILS
<b>3rd Thursdays 7.30pm Coronation Hall</b>			
Ian Gibson (Treasurer)	Halls Management Committee	01934 814261	igibson6@sky.com
Kevin Barrett (Secretary)	Halls Management Committee	01934 811267 / 07855 225049	kevinbarrett240@btinternet.com
Scott Morris (Players)	Halls Management Committee	07963 747572	scott@dotphotographic.co.uk
Betty Patterson (Chair)	Halls Management Committee	01934 812183	gilbet.paterson@btinternet.com
Gill Williams	Halls Management Committee	01934 813255	gwilliams28@btinternet.com
Jane Derrick (WI)	Halls Management Committee	01934 811464	jane.tony@talktalk.net
Steve Hartree	Halls Management Committee	01934 811849	stevenhartree194@btinternet.com
Andy Scarisbrick	Halls Management Committee	01934 813125 / 07747 626875	scarisbrick.andy@gmail.com
<b>3rd Tues (Oct-June) 7.30pm Coronation Hall</b>			
Libby Boucher	Horticultural	07966 563495	libbyboucher2003@gmail.com
Rose Benjamin	Horticultural		
<b>3rd Sat (both halls) 9-12.30pm</b>			
Jo Jones	Market	01934 812370	jojonesbleadon@tiscali.co.uk
<b>2nd Monday 7.30 Coronation Hall</b>			
Gill Williams, Chairman	Parish Council	01934 813255 / 07964 084501	gwilliams28@btinternet.com
Bruce Poole	Parish Council		parishclerk@bleadonparishcouncil.co.uk
<b>1st, 2nd, 4th &amp; 5th Tues Sept-May 7.30pm Coronation Hall</b>			
Trevor Hartgroves	Photographic	01934 239011	t.hartgroves@sky.com
Mark Frisby	Photographic	01934 812573 / 07796 693032	markfrisby@yahoo.com
<b>Wed 7-8pm Jubilee Room</b>			
Corinne Mutlow	Pilates	07919 532960	coz@cmutlow.com
<b>Fridays 9.30-10.30am Jubilee Room</b>			
Emma Hunter	Pilates	07787 563775	emma@ehsportstherapy.com
<b>Wed 7.30pm &amp; shows 4th weekend in Jan, May &amp; September</b>			
Peter Gibbon	Bleadon Players	0785 9001468	petergibbon@beals.co.uk
<b>Tues &amp; Sun 2.30-4.30pm (Sept-May) + Fri 7-9pm (all year round) Jubilee Room</b>			
Kevin Barrett	Short Mat Bowls	01934 811267 / 07855 225049	kevinbarrett240@btinternet.com
<b>4th Thurs 7.30-9.30pm Jubilee Room</b>			
Sue Dennelly	Bleadon Sugarcraft Club	07891 996707	bleadonsugarcraftclub@gmail.com
<b>2nd Thurs Coronation Hall 7.30pm</b>			
Elaine Mellor (Secretary)	Womens Institute	07854 628664	bleadonwi@hotmail.co.uk
Michelle Harper (President)	Womens Institute	07780 688830	
<b>Tues 8-10pm Jubilee Rooms</b>			
Bev Riddell	Womens Institute Choir	01934 811218 / 07970 475626	riddell2en@btinternet.com
Maggie Heath	Womens Institute Choir	01934 813050 / 07761 102934	
<b>Oct-April Thurs Coronation Hall 2-4pm</b>			
Sue Norfolk	WSM Croquet/Whist	01934 812128 / 07484 233086	suenorfolk99@gmail.com
<b>Mon 9.30-10.30am Coronation Hall</b>			
Cheri	Yoga	07717 290708	info@uniquebalance.co.uk
<b>Other Contacts</b>			
Kate James	Bookings Officer	01934 814955 / 07775 795977	bleadoncoronationhalls@gmail.com
Tony Derrick	Security	01934 811464	
Keith Pyke	Youth Club Hall	01934 813127	keith.pyke@btoopenworld.com
Chris Butler	Bleadon Bob		bob@bleadon.org.uk
Bill Blacklock	Caretaker	01934 813031 / 07747 801753	



# WELCOME TO MYRTLE FARM. HOME OF THATCHERS CIDER.

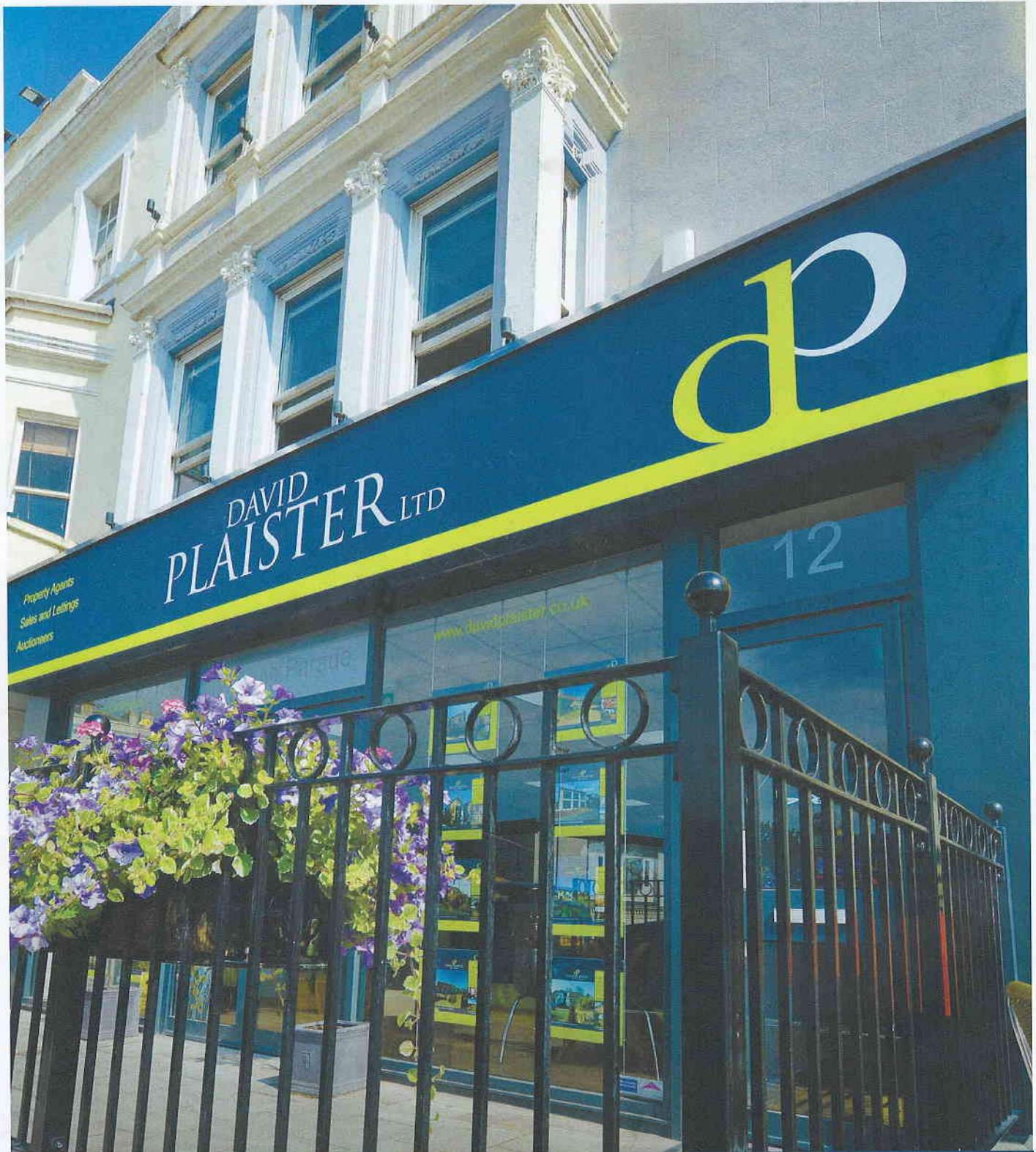
Experience our complete range of ciders in our cider shop here at Myrtle Farm. Try our traditional ciders and explore our exclusive, award winning Cider Barn collection. Or join us at the Railway Inn for some delicious food and a friendly atmosphere.

EST. 1904  
**THATCHERS**  
— THE FAMILY CIDER MAKERS —

**PLEASE CHECK OUR WEBSITES  
FOR OPENING TIMES.**

**Thatchers Cider Company, Myrtle Farm,**  
Sandford, Somerset, BS25 5RA  
Visit: [www.thatcherscider.co.uk/myrtle-farm](http://www.thatcherscider.co.uk/myrtle-farm)  
Tel: 01934 822862

**Railway Inn, Sandford,**  
Somerset, BS25 5RA  
Visit: [www.therailwayinn.com](http://www.therailwayinn.com)  
Tel: 01934 611518



Property Agents  
Sales and Lettings  
Auctioneers

DAVID  
PLAISTER LTD



12

www.davidplaister.co.uk



DAVID PLAISTER

PROPERTY AGENTS | SALES & LETTINGS | AUCTIONEERS

01934 815053

www.davidplaister.co.uk