

Bleadon News

August 2019

www.bleadonparishcouncil.co.uk

Issue 113



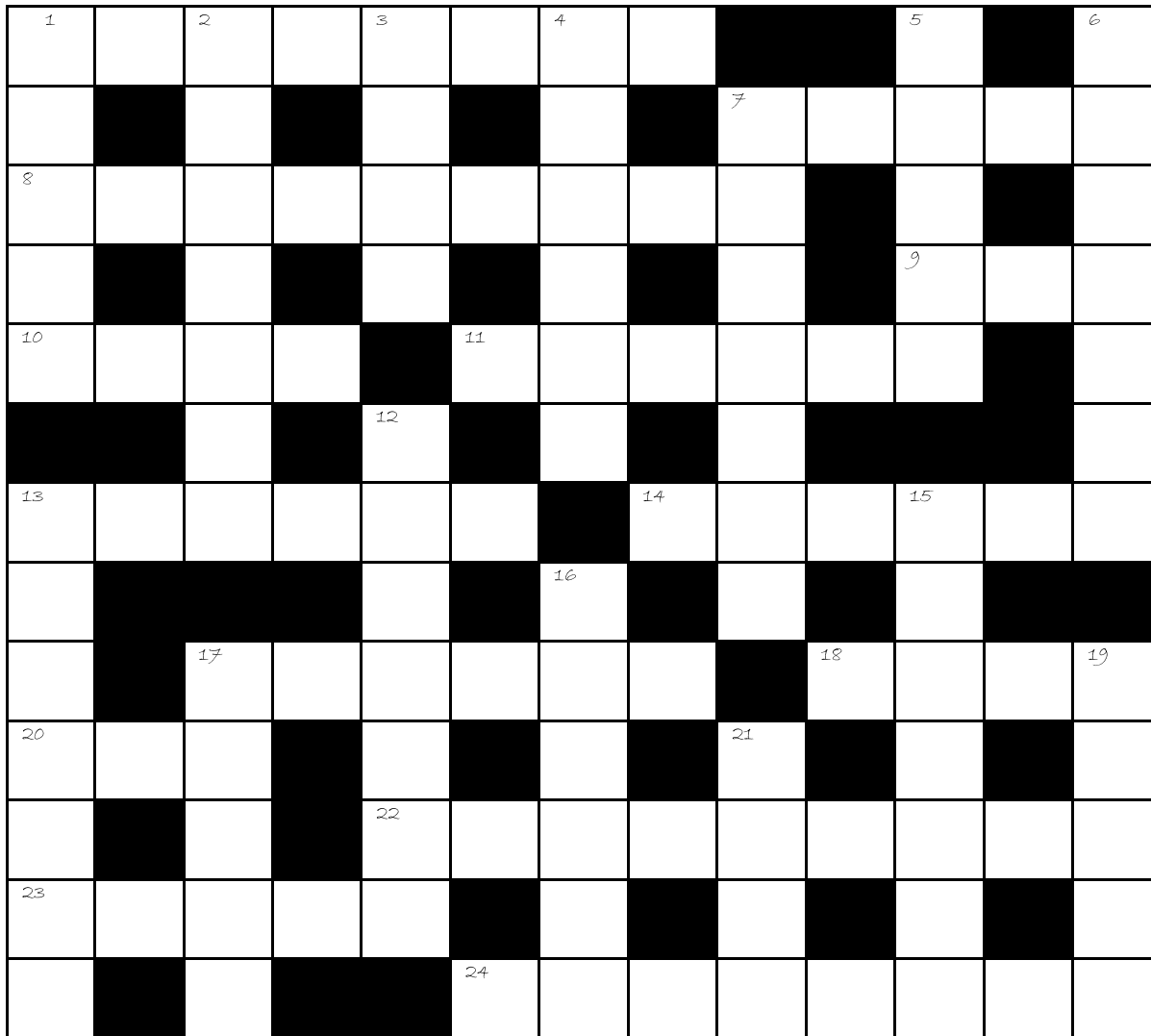
BLEADON

Many contributions
make up our local
news—get involved!

Heading for a beautiful Bleadon Autumn



A Bleadon Cross Word.



Across

- 1 - Hobbs Boat overdue? It's the other side of Bleadon (8)
- 7 - Set out in letters in the Gospel today (5)
- 8 - Mother (not yet!) in waiting (9)
- 9 - Story of a confused priest (3)
- 10 - Loop back for a place to swim (4)
- 11 - Respect a vicar before (6)
- 13 - Three usually given for the owner of 16 (6)
- 14 - Disc about a rope (6)
- 17 - Burgundy, perhaps, popular among you French (6)
- 18 - See 7 down
- 20 and 16 down - Royal Residence at the heart of Bleadon (3.6)
- 22 - They give you a rise in America (9)
- 23 - See 7 down
- 24 - Donkeys on sale or return initially, he reckons (8)

Down

- 1 - Ooze around home initially, a farm animal (5)
- 2 - Litter on the dole (confused), may collapse (7)
- 3 - The French church may tie the knot (4)
- 4 - An old noble, alien, in Kent (6)
- 5 - Meat? Leave it perhaps of 1 across road (5)
- 6 - Ox guided by journalist (7)
- 7 - (and 23, 18 Across) Two apostles providing services to Bleadon (2, 5, 3, 2,4)
- 12 - Tinker sells a bauble to a T (7)
- 13 - Sort of heating that is pivotal (7)
- 15 - They are on rotas or otherwise to address the crowd (7)
- 16 - see 20 Across
- 17 - Sells five goals
- 19 - Roles perhaps for the runner-up (5)
- 21 - Lift up, you say? Quite the opposite (4)



Message from the Chairman

Bleadon has had a number of successes in the past few weeks. The Britain in bloom judges were seriously impressed with our Pennant entry in the national scheme and the council is extremely grateful to Kirsten and the many volunteers who worked so hard to make our parish 'bloom'.

The council agreed to be 'plastic free' and 'frack free' - clearly, just saying it doesn't make it happen and so we will be working closely with everyone to make changes over time.

The neighbourhood plan group has been awarded another grant to continue its work, including appointing a consultant to research the national and local plans and policies that apply to the parish.

I would like to thank Marian for her dedication, wisdom, and good humour during her time with us. She joined at a time when the council was at a low ebb but she leaves us stronger and stable! We wish her all the best for the future.

A warm welcome to our new clerk Naomi Bibi, who joins us in September. Naomi and Marian have finalised the handover and we look forward to working with her.

Finally, it is with great sadness that I have to tender my resignation to the Parish Council. I shall be leaving in September and I would like to wish the hard-working council team the very best for the year. I will still be around the village of course and will be continuing to support many events including the successful Bleadon in Bloom.

Jim Baines Chairman, Bleadon Parish Council

Neighbourhood Plan

The NP Group is delighted to report that the grant application submitted last month has been approved. We have appointed a consultant (Graham Quick) to research

the plans and policies, both national and local, that apply to Bleadon in order to determine any gaps. By the time you read this the August meeting of the Group will have taken place and we will have looked at sites within the settlement boundary where planning applications have already been approved AND where building may be possible. Graham, and NSC, will help us through the process of a 'call for sites' in order to see whether any landowners come forward. The Survey results and any further comments will continue to form the basis of the Plan, building a solid evidence-base as we go along. As always, anyone interested in helping to develop the Plan is welcome to join the Group. Meetings are usually held monthly on a Wednesday evening in the Church Room – check the parish notice boards and Bleadon Neighbourhood Plan website <https://www.bleadonneighbourhoodplan.co.uk/>

Allotments

Allotments: All allotments are now tenanted and most of them are looking good. The tenants and 'Bloomers' have improved the cleared land by the public footpath. Letters will be sent in the next couple of weeks regarding next year's rent, (£17 for a full plot, £8.50 for a half plot) to be paid by 28th September 2019.

Thanks to Marshalls for the chippings and the kerb stones. Well done to all the allotment team and thanks to Bleadon in Bloom for the excellent work.

Bleadon in Bloom is Going Wild

We have had unprecedented support from the village for Bleadon in Bloom and the judging day saw many of you come to the village hall bringing food and chatting to the judges. The community spirit was undeniable in the village and it was a pleasure to be part of. There will be an After Party at the Queens around on the 23rd of September at 7.30pm—please come along and have your say about what we do next year.

Representing Bleadon at the Hearing

Gill Williams was the Parish Council representative at the Planning Enquiry in Weston. She spoke for all of us and delivered a comprehensive and factual message from the village. The full message starts on Page 5.

Bleadon News

Thank you so much for all your articles we are really developing as the communities local news. If you haven't contributed yet but you would like to then please get in touch—Writer@kirstenhemingway.co.uk.

Adieu from our much loved Clerk

I joined the council at a time of great challenge – three clerks had started and finished within the previous four years and only two councillors had been in post for any length of time. There was an air of mistrust and anxiety about the business of the council both among councillors themselves and the community at large. I have to say that I consider the concerns to be misguided as the council and its finances appeared to have been administered correctly. I was fortunate in having the experience and wisdom of the Chairman, Steve Hartree, to draw on in the first few months.

The co-option of five new councillors in May 2018 brought new opportunities and I like to think that I also helped to bring stability to the council. The council, and new chairman Jim Baines, quickly established a good working relationship despite most of the councillors being new to the role of councillor. I really enjoyed working with each and every one of the councillors during my employment – they are a great bunch of people and all of them, past and present, are committed to the success of Bleadon as a vital and vibrant rural parish. I was delighted that all eight councillors stood again in May 2019 and were elected uncontested as it meant that the work of the council could continue without pause.

Bleadon is a delightful parish filled with delightful people and I am proud to have played a small part in the successful 'Bleadon in Bloom' campaign and the 'Neighbourhood Plan' project. Both of these schemes demonstrate residents' desire to celebrate, improve and protect Bleadon now and in the future. Lots of work still to be done – I shall be watching with interest.

Why am I leaving? As many of you know I was diagnosed with lung cancer just three months after starting as Clerk – a complete shock to me as I was (so I thought) completely fit and well. The councillors were, and continue to be, incredibly supportive during my treatment and I am eternally grateful to them for making my 'journey' more bearable. I am now on a regime of 3-monthly scans – the last one was, like the curate's egg, good in parts. It is with great sadness that I am resigning but I would rather make an orderly handover now rather than wait and find a disorderly handover becomes necessary later!

I know that your new Clerk, Naomi, will bring order and good fortune to the council and the parish of Bleadon. She is a qualified and experienced clerk – AND a very nice person!

Marian Barber

Weston-super-Mare Croquet Club



Following our very successful Open Day, the Club has received applications from over ten people to learn how to play Croquet; a few from Bleadon village.

Our teams are doing well in the South West Leagues and our Club sessions are well supported as are our social events incorporating croquet.

New members are made welcome at these by our existing regular members.

The trees on the road are now growing well and afford a great habitation for wild life as well as no longer being a danger to our

members or road users. Fortunately they were cut before Hurricane Hannah hit the village which could have caused considerable damage on the road.

Unfortunately our marquee was lifted out of the ground and hurled through the air landing on the roof of the adjacent bungalow. The fire brigade were extremely helpful and repairs were very quickly put in place by the owners to protect from the extreme stormy weather.

Our season started early this year, in March, although we lost a few weeks to rain in April. We hope to extend our season into Autumn, weather permitting.

New members welcome. After three sessions to learn the rudiments of play, new members can join in the club afternoons and use the lawns for practice.

Jeanette Stuchbery Chairman. 01934 750421

BLEADON PARISH COUNCIL

STATEMENT TO PLANNING APPEAL INQUIRY – APP/DO121/W/18/3211789

Having the statutory right to be consulted regarding planning applications in the parish, Bleadon Parish Council **OPPOSES** the development for housing on the fields between Bleadon Road and the A370 (in accord with the planning application that is the subject of this Inquiry) for the following reasons.

1. Over development of the site with an increase of approximately 40% of housing in the parish, grafting 200 houses onto an historic village, and destroying an area rich in wildlife is totally incompatible with North Somerset Council's (NSC) vision of retaining and enhancing countryside character where the quality of the natural environment is a prime objective.

Infill villages, identified by NSC, and of which Bleadon is one, are subjected to significant control. NSC Core Strategy (CS13) suggests that in these areas growth will be 'small' and 'appropriate' in scale. The proposed development is neither.

2. Residential development history of Bleadon (33 houses in 1658, 338 houses in 1958) is a gradual one with an increase over the last 300 years of only 100 properties every 100 years. A development of 200 houses in a short time period is inappropriate (see image 1).

Image 1: Graph of housing growth in Bleadon 1650 to date, showing growth of c100 homes to 2050 (bold, deemed an appropriate rate of growth) and the challenged 200+ homes (pale line).



3. The largest group development was at the end of the last century consisting of 31 houses on a brown-field site to the side of the village (Bleadon Mill). Note that the construction of social housing in 1946 (30 properties, The Veale) was specifically for agricultural workers returning from World War II. From 1946 to 1996 development was gradual and consisted of individual properties and very small developments, and all of the dwellings have been built within the settlement boundary.

4. NSC's Core Strategy relates housing growth to employment growth and, with at best only minimal employment prospects in the parish, the proposed development fails to meet this Core Strategy criterion. The

vast majority of current residents of working age commute out of the village travelling by private vehicle – essential, given the very limited range of public transport. There may be a promise from the Appellant that there is an apparent willingness to extend bus service 20 but this cannot be a guarantee.

5. The proposed development is opposed by the majority of Bleadon residents. A survey of every house in the parish in preparation for a parish Neighbourhood Plan undertaken in January 2019 showed that only 8.9% of respondents favoured any new homes being built outside of the parish settlement boundary. The vast majority of respondents indicated a maximum development of 15 properties. A copy of the survey is available for inspection and the raw data may also be examined. The responses equate to 56% of households in the parish.

6. The proposed development is opposed by the majority of Bleadon residents. A survey of every house in the parish in preparation for a parish Neighbourhood Plan undertaken in January 2019 showed that only 8.9% of respondents favoured any new homes being built outside of the parish settlement boundary. The vast majority of respondents indicated a maximum development of 15 properties. A copy of the survey is available for inspection and the raw data may also be examined. The responses equate to 56% of households in the parish.

7. The proposed development is contrary to the nature of Bleadon as a "tucked in" village (see image 2). Bleadon lies within a "Heritage Landscape" with the Mendip Hills AONB in close proximity. Visually, the proposed development area is part of the Bleadon Levels when viewed from the AONB and the West Mendip Way national long-distance path. The eye is carried across green fields excluding nearly all of the village housing. These views are an important part of the heritage landscape and must be retained.



7. (contd) The preservation of the current rural character of Bleadon, with its pleasant mixture of many 18th and 19th century historic properties and mature dwellings, is important. There are open vistas for residents and visitors, and any large development will remove this amenity as well as having an adverse environmental and biodiversity impact. The proposed development site is open countryside and would appear as a separate addition to the village, impacting on visual amenity (see Image 7).

Image 7: Aerial view showing tucked in village and connection to Bleadon Levels



8. Bleadon is a relatively small, poorly served village and a sudden addition of 200+ homes is unsustainable. The parish has a limited range of facilities insofar as the day-to-day needs of the residents are concerned; there is a post office, small shop and café, and a small play area for under-twelves. There is also a current and acknowledged lack of facilities in respect of schooling (schools in neighbouring settlements are already over-subscribed), health provision, public transport and recreational activity (especially for the young). There is a possibility that the status of Weston General Hospital will be reduced to that of a “cottage hospital” as its A&E department is already closed overnight.

Facilities for entertainment, meetings, organisations and social gatherings in the parish (Coronation Hall, Jubilee Room and Youth Club) are already used to maximum capacity (the largest hall has a capacity of 120) and could not absorb the additional population generated by 200 properties.

There seems to be little benefit in grafting a large development onto Bleadon which requires the residents to travel elsewhere, chiefly by private vehicle, to access services and facilities.

9. Given the paucity of the public transport system, the proposed development would have an adverse impact on the current road infrastructure, leading to a substantial increase in traffic thus causing difficulties on the narrow and non-paved roads in the parish (eg. Celtic Way, Shiplate Road) that are already used to the maximum of their potential. These, the

prime roads in the parish, are narrow and hedge-lined (see Images 3 and 4); both are winding and on hills with only a few unmarked passing places. Where Celtic Way and Shiplate Road meet in the centre of the village (see Image 5) there is a blind right-angle bend around which many commercial vehicles have to reverse in order to complete a turn. Shiplate Road is already used as a cut-through to the A38. Even a small increase in the number of vehicles will add to an already dangerous situation and no assurance could ever be given that all residents of the proposed development would use only the A370.



There is a 7.5T weight restriction throughout the village and the quarry delivery vehicles are further restricted regarding their access to and from the site, being required only to turn right into Bridge Road from the A370 and right into the quarry. It is already problematic; this road has no pavement past the quarry on either side of the road and damage to the verges has occurred. Even a minimal increase in traffic in Bridge Road, which borders the east of the proposed development site, could only add to an existing problem (see Image 6).



10. There is an acknowledged need for agricultural land and the site for the proposed development is prime agricultural land under cultivation. Brownfield sites need to be sought first.

11. The proposed development is on a flood plain. With the potential in the future for an increase in sea levels, building on an established flood plain could cause future problems. Even if the proposed 200 properties were to be constructed with higher foundations, there would be an adverse effect on the surrounding properties.

NSC Core Strategy seeks to direct residential development to higher-order settlements, ensuring that it is better related to employment, services and public transport access. There are potential and current planning permissions for up to 50 dwellings within the settlement boundary. As Bleadon has been identified by North Somerset Council as an infill village, so the proposed large development outside the boundary is contrary to the area's overall plan. Whilst Bleadon Parish Council accepts (and has approved) the need for infill development, the Parish Council and residents wish to keep Bleadon as an independent community. The proposed development will, in essence, become a dormitory annexe to the village.



Bleadon Parish Council

-oOo-

The above is the statement given to the inspector and both barristers at the start of the Inquiry. Cllr Williams, as the parish council's representative, spoke to the statement and responded to other statements during the two days of the Inquiry, which has been adjourned until later this year.

Bleadon in Bloom—The After Party

The Bloomers would like to invite everyone who helped with the competition this year, whether you were a tub parent or came to the Bleadon Outdoor Festival, helped with the litter picking, planted something, painted something, donated something or just cheered us on—to the after party!

We will be at the Queen's Arms on the 23rd of September at 7.30pm

Please also join us if you would like to help next year!

Call 07710098804



News from the Bleadon Shop

Unfortunately, the shop had a burglary recently in the early hours of a Sunday morning causing extensive damage to the doors.

We have been advised that rural crime is on the increase throughout the country therefore, if you see any suspicious activity in the village you can report it to the 'Beat Surgery'.

The Beat Surgery is run by your local Neighbourhood Policing Team (PCSO Mike Benfield). It is situated in the shops car park every other week (usually on a Wednesday) between 9am to 10.30 am. The next dates are 11th & 25th September, the other dates for the rest of the year are on the shops notice board. The 'Beat Surgery' allows villagers to talk to the police about issues & concerns, it also provides crime prevention advice.

We have to advise you that Royal Mail have altered the Post Collection Time to 5.50 pm (which is later than before). Royal Mail require us to bag up and seal all mail and complete computerized reports (with 'back up' paperwork) for Bank Cheque Deposits plus any mail that requires tracking or a signature such as, Special Delivery or Royal Mail Signed for. The cut off time for this is 4.45pm. Any items received after this 'cut off time' will be sent the next working day. If you have more than 1 parcel or items requiring a signature it is advisable to bring them to the Post office at approx 4.30pm for them to be processed before the Royal Mail cut off time. We apologise for any inconvenience this may cause.

On a positive note, the local strawberries & local bags of potatoes have gone down well and should be available again mid September (depending on weather conditions).

Many thanks for all your support.

Heather Bowman

The Queens Arms

We would like to say a huge thank you to everyone who has supported the Queens Arms since we opened on 7 June. The welcome we have received has been amazing and everyone has been so friendly. The pub looks lovely now that it has been painted outside and has new signs and new benches. We have also just heard that we are in the finals of the Butcombe in Bloom competition. The next stage is for the judges to visit the finalists and decide who the final three are. We would like to thank Wendy and Westover School for making the baskets and tubs up for us, they really do look lovely.

Alan's birthday was a brilliant night and Marion and Jim were amazing, especially Mrs Brown! If you want to see a clip of the night, look on Facebook. The Mexican night was also a huge success and we will definitely have another one soon.

We have just started Blue Plate Wednesdays from 12.00 noon until 2.00 pm where senior citizens can get two meals for £12 – served on a blue plate which is slightly smaller than our normal serving plates.

Coming up, we will be having a Burger Night on 11 September with Beef, Chicken, Cod, Veggie and Pulled Pork Burgers on offer. We will also be starting Quiz Nights in the autumn. We will be raising money for local groups within the Village and the first one will be for the Brownies. More details will be available on Facebook and on the A Boards outside the pub. We will also be having an Open Mic/Folk session on Sundays from 4.30 pm so if you can play an instrument or sing, come along and join in. Again, more details will be on Facebook and the A Boards outside the pub.

The Rugby World Cup starts in September and Alan is already ironing his Wales rugby shirt. We will be open so you can watch all the British teams live and enjoy a bacon or sausage roll at half time. The end of October is Halloween – we have brought loads of spooky decorations with us, so we will be putting them up and hopefully having some live music.

So, as the dark nights start to draw in there will be plenty going on at the Queens Arms and we look forward to seeing you all – it's your pub so if there is anything you would like to see taking place, please let us know.

The following poem has been written by an anonymous regular in the pub, we hope you enjoy it.

Butcombe beer
Is available in Bleadon here.
People come to us from far and near
To buy their choice of Butcombe beer.

Here's the nub.
We now have a cracking village pub,
Selling decent beer and tasty grub-
A real old-fashioned village hub.

Come and join us here
And gather rosebuds while ye may.
Friendship plus good cheer
Are on the menu for today -ay-ay-ay

Yes, today
We can state with happiness today
That our pub's back to its best today,
So we'll puff out our chest today.
Mm-mm-mm-mm.

Cheers!

Alan and Kerrie



Bleadon Village Monthly Market continues to thrive with the help of a willing band of volun-



teers. A big thank you, you know who you are!

We continue to get new stallholders and are very pleased to welcome The Land Larder run by Maggie with seasonal, locally grown veg, freshly picked for the market and grown from organic seed with no pesticides.

The Market is a regular village social event for meeting friends and stocking up with food and gifts. It raises much needed funds for our village halls. Make a date in your diary – see the poster in this magazine and the village noticeboards and follow us on Facebook or Bleadon BOB.

Jo Jones

Bleadon Village

MONTHLY

MARKET Saturday

21st
Sept

19th
Oct

16th
Nov

7th
Dec

Coronation Hall and Jubilee Hall

BS24 0PG

9.30am – 12 noon

30+ stalls with:

Fresh local produce. Old Spot Pork & Sausages.
Goats Milk & Cheese. Bakery. Eggs. Pies. Savouries.
Preserves. Cakes. In season Veg. Plants.
Books. Crafts. Jewellery. Collectables. Gifts. Toys.
Bric-a-Brac.

Something new every month.
Delicious refreshments.

Find us on Facebook and www.bleadon.org.uk/market





Whitehouse

Kennels & Cattery, Somerset

Whitehouse Kennels & Cattery are a family run pet boarding home. Having been in the animal care business for over 25 years we know the importance of your family friend and will provide a truly caring service.

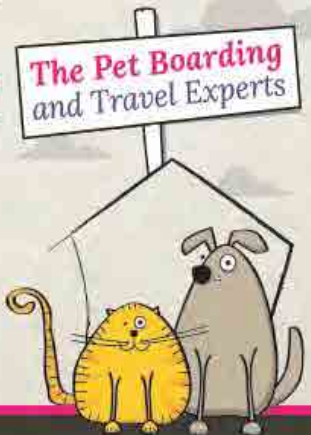
Whether you are looking for pet boarding, relocating abroad, dog grooming, or buying a bed for your cat, Whitehouse Kennels & Cattery is the place for you!

Services include:

-  Pet Boarding
-  Day Boarding
-  Pet Export & Travel
-  Pet Shop
-  Cuddle Buddies
-  Collection & Delivery Service
-  Grooming Service
-  Wedding Doggie Services



Find us on Facebook



OPEN EVERY DAY
10am - 1pm & 2pm - 6pm

For more information & prices contact us on:

T: 01934 750352 E: enquiries@p-e-t-s.co.uk or visit www.whitehouse-kennels.co.uk
Whitehouse Kennels & Cattery, North Rd, Eastertown, Lympsham, Somerset BS24 0HS

AUTUMN NEWS AT WHITEHOUSE KENNELS AND CATTERY

Hi! We hope that when this arrives you will have had a good holiday. The kennels and cattery have been very busy over the summer and we have had some interesting new guests including an adorable bearded dragon that smiles for a locust! We have a new addition to our own kennel's family who some of you may have met "Pumpkin" the Pug! She was one of many pugs living on a farm in Wales and used extensively for breeding. When she encountered problems and was no longer worth anything to them they sold her to someone locally who had a baby. Pumpkin understandably now in a real home didn't cope very well with sharing so she became very difficult for her new owner and ended up here. She has joined Pugly pug and Nelly pug and started visiting schools, residential homes and is a little star. She became so attached to one of the poorly children she visits she has now gone to live with her permanently and is in training to be a support dog so she can go to school every day with her and have her own desk and class teacher. One of the pugs now even has her own face book page "Dear Pugly" so the residents can see what they have been up to between visits!!

We still get little friends looking for new homes many with sad stories and looking for you to provide

a very happy ending. We have had a few beagle x's in recently that have had skin conditions like they have lived in filthy sheds for breeding with little human intervention and are so frightened. If you do want to buy a puppy please do a little homework first. Please go to the home of the breeder, ask to see the mum and dad and speak to owners of dogs they have recently sold.

Some of you may already know and some of you in the village we have already helped move your pets abroad. We export pets all around the world mainly by air and we offer a pet chauffeur service in Europe. Recent trips include puppies to Switzerland, Sweden and Austria and dogs & cats travelling to Australia and New Zealand and after quarantine being reunited with their families and pets belonging to families in the British Embassies being relocated to the USA.

Bye for now but if you have any pet care questions or enquiries do not hesitate to contact us at Whitehouse Kennels and Cattery on 01934 750352 also visit us on the web at www.whitehouse-kennels.co.uk.

Christine King

Bleadon Fit

Low back pain (LBP) is very common & affects a large number of people during the course of their life. It can have a range of different causes with the pain normally accompanied by a restriction in movement.

LBP can be acute where the symptoms have started recently & are extremely painful. It can also be chronic where the pain is less severe but has been there for a long time. People with chronic LBP have a tendency to avoid certain movements for fear of exacerbating the issue. In addition, LBP can be acute on chronic meaning that the pain goes away but then returns – this is very common.

What Causes Lower Back Pain?

- Sometimes discs & nerves can become irritated leading to pain down the legs & in the back.
- The tissues around the back can become highly sensitive causing pain in the area.
- Sometimes the low back muscles are overworking due to something else not performing as it should.

Despite the tissues causing the pain, usually our movement habits have a big part to play. If we have previously had a niggle or injury, the body can develop compensatory strategies to protect itself. The build up of these strategies can lead to areas of the body overworking. It's often during stressful periods or when you are tired that you do something innocuous like straightening up from cleaning your teeth that you feel your back 'go'! We are all unique so one person's strategy to overcome pain will be different to another person's.

It is important to find the true cause of your pain to achieve the ideal outcome of the pain disappearing & not returning! Quite often the stressor can be traced back by discussing your medical history including any previous injuries to different areas of the body. It's all well & good treating the area of pain to desensitise it, but we also need to overcome the compensations that

your body is employing through a combination of hands-on loading & exercise rehabilitation.

About Me!

I have a First Class Honours degree in Sports Therapy from the University of Bath & have nine years of experience working within a clinic and with sports teams. Through personal experience of injury & the difficulties of returning to sport following this, I have a good understanding & empathise with anyone finding themselves in the same situation. My aim is to provide an optimum level of treatment & advice for those who are seeking a return to fitness.

In addition to my Sports Therapy work I am also a Pilates Instructor & I currently teach the Pilates class on a Friday morning at Bleadon Coronation Halls.

If you have any questions or there is anything that you would like to see in future editions, please feel free to contact me on 07787 563775 or by e-mail at emma@ehsportstherapy.com.

Emma Hunter



Your Parish Council

NAME	ADDRESS	PHONE NUMBER
Mary Sheppard (vice Chairman)	The Incas, Bleadon Road	812921
Steve Hartree	Chestnuts, Chestnut Lane	811849
Kirsten Hemingway	Southerly, Purn Way	815540
Jo Richardson	Selicks, Celtic Way	07859 066400
Andy Scarisbrick	Westdown Cottage, Purn Way	07747 626875
Anne Selway	Jackstones, Purn Way	07514 531530
Gill Williams	5 Pine Lea	813255

Bleadon WI

We are delighted to announce that one of our skittles team has won the Avon Federation Skittles tournament – the final match was against a team from Harbourside WI (Portishead) and Bleadon 'A' won by a good margin. Continuing the sports theme, our 'Walking Netball' players are looking forward to taking part in a Festival in Bath, as well as a tournament with other WI groups in Paignton in the Autumn.

In support of 'Bleadon in Bloom' we enjoyed a talk on bee-keeping, which gave us lots of ideas for suitable planting to encourage bees.

For a bit of fun, we held a contest to find 'the best sandwich' – fighting off strong competition from fish finger, BLT and ham sandwiches, the 'egg and cucumber' sandwich proved to be the firm favourite!

No competition for the best cake made for the 'Summer Tea Party' – they were *all* delicious – and all in a good cause for the Hall refurbishment and the Gemini Project.

['Keep the date' – all welcome to our Christmas Carol Concert on Friday, 13 December, in church and afterwards in the Coronation Hall.]

Elizabeth Boucher

Music and Cake at the Coronation Halls

On a very warm day in July the WI choir, The Bleadon Belles, held a fundraising afternoon tea in the Coronation Hall and entertained an audience of friends and villagers with popular songs accompanied by Liz Rankin on piano. Guests also enjoyed tea and delicious homemade cakes provided by members.

It was a poignant event for the choir being the first, and sadly last, public performance under the leadership of its lovely musical director Meg Brand, who joined the Belles in April. Meg has received a wonderful job opportunity, which is just right for her, but will entail moving to South Wales; too far to travel to Bleadon. Although sad to see her go, we all wish Meg every success for the future.

All is not lost however and the Choir are really happy to be joined in September by Naomi Hickman, a young, talented, local singer and music teacher. So the choir carries on! The musical tea party was raising funds for the Gemini Project and for a new kitchen for the Coronation Halls.



Joanne Jones

Our new Parish Clerk—Naomi joins us from Frampton Cotterell Parish Council in South Gloucestershire, where she worked as Clerk to Council for just over a year. Before that, she was employed by Filton Town Council for three years, where she worked as Town Council Support Officer and also completed her Certificate in Local Council Administration (CiLCA), and so she comes with a sound knowledge of Parish and Town Councils, as well as local government more generally.

She writes a regular column for the Society of Local Council Clerk's magazine "The Clerk" and is also a selected member of the International Institute of Municipal Clerk's "International Relations Committee".

Naomi has worked abroad for the Foreign and Commonwealth Office and British Council, and has also taught for the Open University. She holds a Masters degree in the Christianities of Asia and Africa, and a Bachelors degree in Politics. She also speaks Hebrew and Persian. A keen runner, Naomi is a member of a local running group. She is married with 3 children.

Naomi is really looking forward to taking up her post at Bleadon Parish Council, and to working with the Councilors and residents, to achieve the best possible results for the local community.



Update: Community Gardening in the Churchyard

In June, July and August it has been a joy to welcome new helpers at our "Churchyard working group" mornings. It is good to get to know local people whilst working together. If you have not yet joined in and want to, please do. If you need more info, please contact Tim on revtimerridge@gmail.com or 01934 815 404.

We have planted up previously overgrown grave plots and the splash of colour makes so much difference. Thank you to Bleadon in Bloom for providing plants.

We are pleased to see that an ornamental prunus which was mistakenly cut back very hard is now shooting strongly from the base and may even be better off long term of the mistake!

We are planning to be working together on 14th Sept, 5th Oct and 2nd Nov (all Saturdays from 10am to 12noon) - do come along and join in. Bring gloves and secateurs if you have them, but if not just bring yourself.

There are also still plots available for adoption. This means planting / tidying a specific plot at a time to suit you. Please ask if you would like to adopt.

Thank you for all your help so far and we look forward to working together again soon.

Tim



Sunday 8th Sept: Open Tower Afternoon 2-4pm

Saturday 14th Sept: Open Tower Afternoon 2-4pm

Sunday 22nd Sept: Godparent Sunday Service at 10.15am

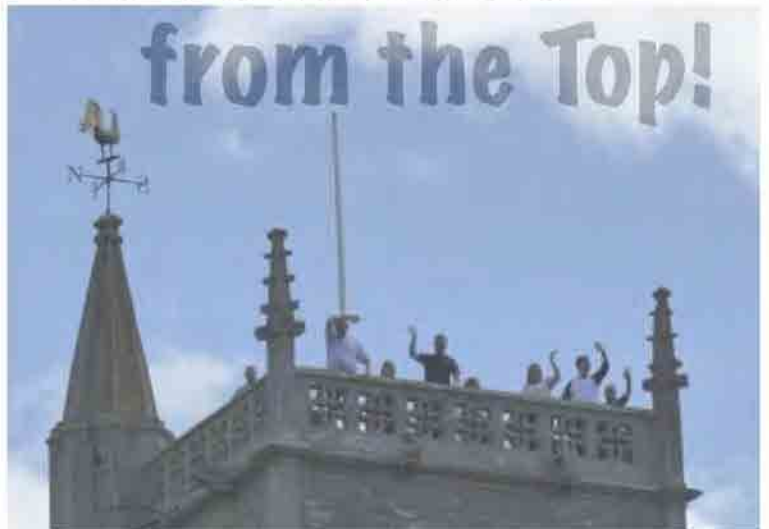
Sunday 20th Oct: Harvest Festival Service at 10.15am

Sunday 20th Oct: Harvest Lunch at 12.30pm (813 314 for tickets)

Sunday 10th Nov: Remembrance Sunday Service at 10.15am.

See Bleadon

from the Top!



Bleadon Church Open Tower 2019 14th July, 1 1st Aug 8th & 14th Sept: 2-4pm

Plus ground level Tea and Cake!

Some safety restrictions apply to tower access, e.g. children under 8 are welcome but can NOT go up the tower for safety reasons. Sorry!

For more details please see: WWW.bleadonchurch.co.uk



Bleadon Parish Church

Harvest Festival: Sunday 20th October 2019



Harvest Festival: Service of Thanksgiving:

10.15am in the church. All welcome. No ticket required.

As an act of thanksgiving, during this service we will be collecting donations of **none perishable** food and or money to be given to the food bank at the Healthy Living Centre.



Harvest Lunch

12noon for 12.30pm in the Coronation Hall

A hot lunch: Somerset Chicken or Vegetable Wellington with Roast Potatoes, hot veg and trifle to follow.

£12.00 per ticket (Children under 10, £4 per ticket)

Bar and Raffle available. Musical entertainment included. Booking essential. Please phone 01934 813 314 for tickets.



www.bleadonchurch.co.uk

Bleadon Wild

There was an anxious wait for the first sightings of water voles on the rhyne this summer. Various surveys carried out by the developers and those opposed to the housing development had found signs of voles, and even captured vole activity on a camera trap, but because mink had also been seen there was genuine concern to see how the population had fared. Unfortunately, because of the amount of floating pennywort and fools water cress growing in the water, finding voles was extremely difficult. With each day that passed without a confirmed sighting, concern was growing, particularly as we got to the middle of June, which should be a peak time for activity, without anything concrete. It was a huge relief to finally spot a vole sitting on the bank munching at pennywort on the 17th of June, but this remained an isolated sighting until the vegetation in the rhyne was cleared. Happily, since then sightings have been regular and on a couple of occasions, I have been rewarded with the fantastic sight of young voles playing on the banks and in the water. My impression is that there is a reduced number of voles, compared with last year, particularly on Bridge Road, but that there is still a healthy breeding population. Let's hope that they continue to thrive!



If you keep in touch with the news, you can't fail to hear about the alarming decline in wildlife, from bees and butterflies, to birds and mammals, in recent times. Some of the numbers are truly shocking. Hedgehog numbers have fallen by 95% and lots of farmland and garden birds by 60% or more. The good news is that you can really make a difference, by even taking small steps to make your garden and community more wildlife friendly. If you have any doubt of the benefit of leaving wild areas, take a walk on Hellenge or Purn Hill and marvel at the variety of insect life that is thriving in the areas of meadow grassland encouraged by Avon Wildlife Trust. The butterflies and bees are lovely to see, but all of the insect life provides food for swallows, wrens, bats

and a host of insectivores. If you can leave a patch of wilder garden it can be of enormous benefit. Log piles, garden ponds and bug hotels are also good. However, if this is a step too far for you, even planting a small area of flowers for bees and butterflies in a bed or even a planter or window box can help too. Be aware that modern showy 'double' flowers are generally of little use to insects and that native British flowers are often more beneficial than exotic imports. For those of a lazy disposition, a good excuse for delaying mowing the lawn for the first time in spring, putting this off until the first dandelions have flowered can be a great benefit to early emerging bees. If you can't resist the urge to get the mower out, there are plenty of early flowering plants including crocus, bluebell, snowdrop and primrose that can make attractive displays. The garden can provide natural food for birds, in the form of berries, seeds and invertebrates, as well as natural places for birds to nest and roost. Thorny bushes can provide really good protection for nests against predation. Hawthorn hedges can provide both secure nesting sites and a good supply of berries. If you want to help hedgehogs, make sure you check autumn bonfires for sleepy hogs before lighting them. Providing a hedgehog house and dry leaves and grass for nesting is good. You can buy purpose built houses, but a large upturned flowerpot, bucket or bowl with an entrance hole will also work. Hedgehogs need to roam, so connecting gardens with 'hedgehog highways' where there are no gaps in fences or walls is essential (the hole needs to be 10cm square). I can hear the collective groan of gardeners, but it is also really important to avoid using slug pellets and other pesticides, at least in areas accessible to hogs. There are plenty of articles and texts available on creating space for wildlife in your garden that go into far more depth than can be provided in a magazine article. What I am trying to do here is give you a flavour of the sorts of things you can do and to give a sense that whatever steps you take will be of benefit and the cumulative effects of lots of people making changes, however small can be important in helping to halt these alarming declines.



BLEADON WI CHRISTMAS
CAROL CONCERT
AND CHRISTMAS EVENT
FROM 6PM AT THE
CHURCH
AND
CORONATION HALLS

FRIDAY 13TH DECEMBER



Letter to the Editor

Dear Editor,

I am writing to you to express my utter disappointment with the person or persons that have removed/stolen some of the Blue Hearts that were made by the school children from Lymphsham and Westhaven Schools. They were placed around the village as a Trail, with Maps paid for by local businesses being sold at the local Post Office. One of my friends had her grand children down from up country especially to walk this adventure trail only to find hearts missing.

What sort of message does this send to our young generation who made them, when all of their excitement and efforts have been destroyed in this way .Can I please ask if any one knows where these Hearts are? Please return them from where they came or hand them in to the village hall for repatriation.

Thank you

David Sharman

Advertisement for Bridge Garage featuring a red car and a blue car in a garage.

BRIDGE GARAGE
Bridge Road, Bleadon, BS24 0AU 01934 812206
enquiries@bridgegarage.com

Servicing & MOT
Car sales
Repairs
Computer diagnostics
Air conditioning
Attended Filling station

Because we care

Mon 7-8pm & 8-9pm Jubilee Room			
Marie Keele	Aerobics	01934 270853 / 07939 038071	mariekeele@hotmail.co.uk
Tues 10.30-12.30 Coronation Hall			
Tina Dodd	Art Class	01934 843660	sandtdodd@btinternet.com
Thurs 10-12noon Jubilee Room			
Stevie Rhodes	Bleadon Art Group	01934 813497	
Mon 2-5pm Coronation Hall			
Doug Norfolk	Bridge Club	01934 812128 / 07547 163862	dougn@btinternet.com
Judith Hutton	Bridge Club		judithhutton341@googlemail.com
Tues 5.30-7pm Jubilee Room (Term time only)			
Jacqui Hall-Scott	Brownies	07730 498371	j.hallscott@btinternet.com
Thurs 3.30-5pm Jubilee Room Term time only			
Linzi Furneaux	Dance School	07787 338003	linzi@theschoolofdance.co.uk
3rd Mondays 7-10pm Coronation Hall			
Debbie Thorne	Holistic Therapy	07905 537118	debbiethorne37@hotmail.com
Fridays 2-4pm Coronation Hall			
Gordon Brown	Friendship	01934 811926	NO EMAILS
3rd Thursdays 7.30pm Coronation Hall			
Les Masters (Chair)	Halls Management Committee	01934 811976	lesleymasters246@btinternet.com
Ian Gibson (Treasurer)	Halls Management Committee	01934 814261	igibson6@sky.com
Kevin Barrett (Secretary)	Halls Management Committee	01934 811267 / 07855 225049	kevinbarrett240@btinternet.com
Scott Morris (Players)	Halls Management Committee	07963 747572	scott@dotphotographic.co.uk
Betty Patterson (Village)	Halls Management Committee	01934 812183	gilbet.paterson@btinternet.com
Dave Shephard (Village)	Halls Management Committee	07884 270476	carol51@tiscali.co.uk
Gill Williams	Halls Management Committee	01934 813255	gwilliams28@btinternet.com
Jane Derrick (WI)	Halls Management Committee	01934 811464	jane.tony@talktalk.net
Pam Lamb	Halls Management Committee	01934 812706	pamlamb@btinternet.com
Steve Hartree	Halls Management Committee	01934 811849	stevenhartree194@btinternet.com
Andy Scarisbrick	Halls Management Committee	01934 813125 / 07747 626875	scarisbrick.andy@gmail.com
3rd Tues (Oct-June) 7.30pm Coronation Hall			
Libby Boucher	Horticultural	07966 563495	libbyboucher2003@gmail.com
Rose Benjamin	Horticultural		
3rd Sat (both halls) 9-12.30pm			
Jo Jones	Market	01934 812370	jojonesbleadon@tiscali.co.uk
2nd Monday 7.30 Coronation Hall			
Jim Baines	Parish Council	01934 814243 / 07964 084501	jim_baines@btinternet.com
Marian Barber	Parish Council	07453 358318	parishclerk@bleadonparishcouncil.co.uk
1st, 2nd, 4th & 5th Tues Sept-May. 7.30pm. Coronation Hall			
Trevor Hartgroves	Photographic	01934 239011	t.hartgroves@sky.com
Mark Frisby	Photographic	01934 812573 / 07796 693032	marknfrisby@yahoo.com
Wed 7-8pm Jubilee room			
Corinne Mutlow	Pilates	07919 532960	coz@cmutlow.com
Fridays 9.30-10.30am Jubilee Room			
Emma Hunter	Pilates	07787 563775	emma@ehsportstherapy.com
Wed 7.30pm & shows 4th weekend in Jan, May & September			
Peter Gibbon	Bleadon Players	0785 9001468	peter@mpgifa.co.uk
Tues & Sun 2.30-4.30pm (Sept-May) Fri 7-9pm (all year round) Jubilee room			
Kevin Barrett	Short Mat Bowls	01934 811267 / 07855 225049	kevinbarrett240@btinternet.com
Graham Rogers	Short Mat Bowls	01934 811571	
Paul Shand	Short Mat Bowls	01934 814445 / 07970 868163	
4th Thurs 7.30-9.30pm Jubilee Room			
Sue Dennelly	Bleadon Sugarcraft Club	07891 996707	bleadonsugarcraftclub@gmail.com
Wednesdays Coronation Hall 9.30-11.30am Term Time only			
Rachel Booth	Toddlers	07856 125163	boothr12@yahoo.co.uk
Catherine Saunders	Toddlers - Treasurer		catherine_saunders@hotmail.co.uk
2nd Thurs Coronation Hall 7.30pm			
Kate James - Secretary	Womens Institute	07775 795977	bleadonwi@hotmail.co.uk
Michelle Harper - President	Womens Institute	07780 688830	
Karen Grainger - Treasurer	Womens Institute	07795 546058	
Tues 8-10pm Jubilee Rooms			
Viv Kimber	Womens Institute Choir		v.kimber@btoopenworld.com
Jane Derrick	Womens Institute Choir	01934 811464	jane.tony@talktalk.net
Oct-April Thurs Coronation Hall 2-4pm			
Sue Norfolk	WSM Croquet/Whist	01934 812128 / 07484 233086	suenorfolk99@gmail.com
Mon 9.30-10.30am Jubilee Room			
Cheri	Yoga	07717 290708	info@uniquebalance.co.uk
Other Contacts			
Kate James	Bookings Officer	01934 814955 / 07775 795977	bleadoncoronationhalls@gmail.com
Tony Derrick	Security	01934 811464	
Keith Pyke	Youth Club Hall	01934 813127	keith.pyke@btoopenworld.com
Chris Butler	Bleadon Bob		bob@bleadon.org.uk
Bill Blacklock	Caretaker	01934 813031 / 07747 801753	

The Start of Something Great!

One miserable afternoon at the beginning of spring in 1987, I set off from my home in Silchester (Les was in the moving van), leaving my family, friends, and Drama group behind. I was driving my father's car which he had taken so much care of! My passengers were five dogs, a crate of birds and a dustbin full of water and gold fish from my beloved pond. We were off into the unknown—off to Bleadon.

Les and I had been looking for a Post Office to retire to—that was not exactly true—we did not actually retire until fifteen years later. We had looked all over the south of England for somewhere that we thought would suit us. This was some undertaking as sometimes the building would be fine but not the setting and vice-versa. After a worrying but interesting time, at last we found Bleadon. It was situated right near the church. On the first Sunday morning I opened the window so that my family could hear the bells on the telephone. I loved my new home and soon settled in. We felt so lucky. We loved the old building, the village and the people—we still do. When we did retire we moved just up the hill—a stone's throw away from our lovely Post Office.

After we had settled our large family in and our new business was running smoothly, we felt it would be good to indulge in our favourite hobby, making fools of ourselves on the stage. I love dancing and Les acting, so we thought it was time to start a drama group in Bleadon. We were in a good position to ask customers if they were interested in joining us in putting on a show. We managed to gather about twenty three people, young and young at heart the youngest being about eight and the oldest being about seventy! We invited everyone for an evening discussion on where our strengths lay—they were mostly novices! With Les's vast experience, we put on our first show with Bleadon Players called "Here We Go". It was a great success and very much appreciated by our Bleadon audiences—mostly our Bleadon customers again. The programme consisted of hearty group songs with some brave people singing verses solo and audience participation. We also had a short play with a very amenable large dog (also a customer!) performing—well looking sad. The rest of the cast were aged be-

tween seventeen and seventy. Morag, Ruth and Gill sang "Nobody loves a fairy when she's forty" which was hilarious. Two little girls, Morag and I sang and bounced to "A spoon full of sugar" - you can't lose with children. I remember borrowing a dark purple 'flapper' dress with fringes and Les and I performed together "It's never too late to fall in love". Les compered and directed so everything went smoothly—the audience knew Les quite well by then and enjoyed heckling and jeering him off—all in good fun.

The next show we presented we called "Here We Go Again". The content of this show was similar to the last. This time Morag, Pat and Sandi sang in harmony like the Andrews Sisters. It was very well liked and they performed this trio with new songs in many shows. Les and I did our usual duos—customers and friends loved to make fun of us!

Very soon we had a Chairperson and a Secretary. Sandie was our Secretary and later our Chairperson for many years, Morag eventually taking over as Secretary. Now we have a large committee with many rules (Health and Safety)!

As times moved on most of the original players have left us—but Morag, Sandi and I are still hanging on. Haven't we done well?

Les is no longer a member but will never miss a show. We are both so pleased to see talented new members joining us and are thrilled to see the standard of the players' performances rocketing. I feel that our first show "Here We Go" all those years ago, really was "The Start of Something Great".

Glenise Masters



BLEADON GARDEN SERVICES

Landscape Gardening

Fully Qualified Gardener and Landscape Designer

- ✦ All forms of Garden Maintenance - no garden too small
- ✦ Correct shrub pruning techniques

✦ Landscape/Garden design

✦ Garden Overhauling / clearance

30 Years experience including Redesign and re-landscaping of numerous Public Parks

CONTACT: Joe Scully, Hillcote,

Bleadon Hill,

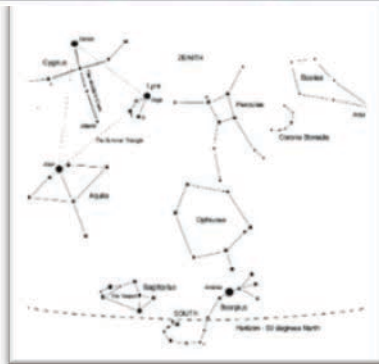
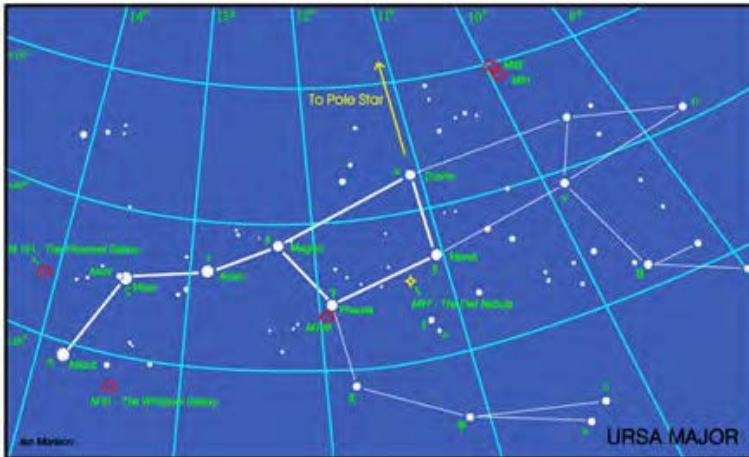
07903 323885

Bleadon Skies

Been a very busy few months delivering lots of outreach in celebration of the 50th Anniversary of the Apollo Missions to the Moon, which has seen me tread the length and breadth of the South West and work with many wonderful people.

Now however as the school holidays are in full swing and the nights are beginning to draw in once again, I can take a breather and go back to simple observations of the night sky here in Bleadon.

This map shows the constellations seen towards the South at about 10pm BST in mid-August.



High overhead towards the North (not shown on the chart) lies Ursa Major.

The stars of the Plough, shown linked by the thicker lines in the chart above, form one of the

most recognised star patterns and asterisms in the sky. Also called the Big Dipper, after the soup ladles used by farmer's wives in America to serve soup to the farm workers at lunchtime, it forms part of the Great Bear Constellation - not quite so easy to make out! The stars Merak and Dubhe form the pointers which will lead you to the Pole Star, and hence find North. The stars Alcor and Mizar form a naked eye double which repays observation in a small telescope as Mizar is then shown to be an easily resolved double star. A fainter reddish star forms a triangle with Alcor and Mizar.

Ursa Major contains many interesting "deep sky" objects. The brightest, listed in Messier's Catalogue, are shown



on the chart, but there are many fainter galaxies in the region too. In the upper right of the constellation are a pair of interacting galaxies M81 and M82 shown in the image here on the right. M82 is undergoing a major burst of star formation and hence called a "starburst galaxy". They can be

seen together using a low power eyepiece on a small telescope.

Another, and very beautiful, galaxy is M101 which looks rather like a pinwheel firework, hence its other name the Pinwheel Galaxy. It was discovered in 1781 and was a late entry to Messier's catalogue of nebulous objects. It is a type Sc spiral galaxy seen face on which is at a distance of about 24 million light years. Type Sc galaxies have a relatively small nucleus and open spiral arms. With an overall diameter of 170,000 light years it is one of the largest spirals known (the Milky Way has a diameter of ~ 130,000 light years).

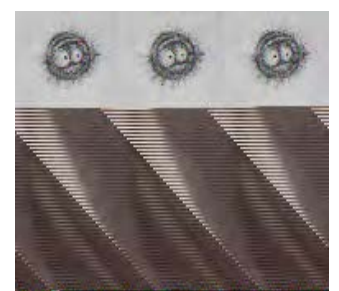
Though just outside the constellation boundary, M51 lies close to Alkaid, the leftmost star of the Plough. Also called the Whirlpool Galaxy it is being deformed by the passage of the smaller galaxy on the left. This is now gravitationally captured by M51 and the two will eventually merge. M51 lies at a distance of about 37 million light years and was the first galaxy in which spiral arms were seen. It was discovered by Charles Messier in 1773 and the spiral structure was observed by Lord Rosse in 1845 using the 72" reflector telescope at Birr Castle in Ireland - for many years the largest telescope in the world.



And finally, lying close to Merak is the planetary nebula M97 which is usually called the Owl Nebula due to its resemblance to an owl's face with two large eyes. It was first called this by Lord Rosse who drew it in 1848 - as shown in the image below right. Planetary nebulae are the remnants of stars similar in size to our Sun. When all possible nuclear fusion processes are complete, the central core collapses down into a "white dwarf" star and the outer parts of the star are blown off to form the surrounding nebula.

So a great time to get outside and look up at the wonders of what lies above us.

Jo Richardson FRAS
Space Detectives
ESERO-UK Space Ambassador



Bleadon Horticultural Society

This year's coach trip in July was to National Trust Dyffryn Gardens in South Wales, stopping off at Chepstow Garden Centre en route for coffee and a spot of horticultural shopping. Arriving at Dyffryn we enjoyed exploring the network of garden rooms and discovering the history of the Victorian mansion. The walled kitchen gardens and reinstated glasshouses containing rare cacti, succulents and orchids were beautifully presented. We also admired the stunning collection of water lilies in the newly restored fountain area of the Great Lawn.

We look forward to the 45th Summer Show on Saturday 7 September in the Coronation Hall. There are classes for Vegetables and Fruit, Cut Flowers and Pot Plants, Homecraft including cake making, jams and wine, Flower Arranging and a Junior Section. We encourage anyone to enter – you don't need to be a member of the society. Free schedules with full details of how to enter are available from Bleadon Post Office and shop, the Queens and the church porch. Doors open to the public at 2.30pm. Admission is £1 for adults, children under 16 free. Refreshments will be available.

Our evening meetings will recommence on Tuesday 15 October at 7.30pm in the Coronation Hall when Andy Scarisbrick will give a talk on Beekeeping. Entry is £2 on the door. All are welcome to our meetings and events.

Other Events

19 November - History of the garden at NT Tyntesfield - Paul Evans, Head Gardener

17 December - Beetle Drive and Social with 'Potluck' supper. Tickets costing £2 must be bought in advance by phoning 07801 386477.

Rose Benjamin and Libby Boucher



Mark Howe

Gardening Services

9 Malvern Road, Weston-Super-Mare

Phone 01934 413594 or 07773272003

- **REGULAR GRASS CUTTING**
- **HEDGES AND TREES CUT**
- **SHRUBS PRUNED**
- **FENCE PAINTING**
- **TURFING**
- **PATIOS AND CHIPPINGS LAID**
- **LAWN TREATMENTS**
- **DECKING ERECTED**
- **PATIOS AND PATHS PRESSURE WASHED**
- **FENCING ERECTED AND REPAIRED**
- **SHED ERECTION & REPAIR**
- **BLOCK PAVING REPAIRS**

We care about you

ESCAPE

HAIR AND THERAPY SALON



A VERY HAPPY RETURN!



GREAT SENIOR CITIZENS PRICE OFFERS

Tasha is coming back!

Our lovely **Tasha** will be coming back to work in the salon from September.

For those of you who don't know Tasha, she is an amazing hairstylist who worked here at Escape for many years, and after having a few years away whilst having her little boy, is now back!

Tasha specialises in colouring, cutting and hair ups! We are very excited to have her back joining our team!

Just gets better with age

Debbie, who has over 30 years experience and specialises in the more mature client, is holding an Senior Citizens morning every Thursday morning!

Debbie's prices are as follows:

Blowdry/Shampoo and Set	£15
Cut & Blowdry/Shampoo and Set	£25
Wet Cut	£17
Perm (including Cut and Finish)	£60



We look forward to seeing you soon!

To make an appointment please message us or give us a call on

01934 813400

LOOKING FOR DIRECTIONS

Customers of the Queen's Arms who wish to check which way the wind is blowing as they leave for home can do so simply by glancing at the weathercock on the church tower. When we arrived in Bleadon in 1987 this was not possible because there was no weathercock up there. I did not realise there ever had been one until a committee meeting of Bleadon Players a few years later. Ruth James, a founder-member who was born in Bleadon in 1934, had spent her whole life here and was a stalwart of the church and its choir, came up with a suggestion for spending some of the significant amount of money the Players had accumulated for the replacement of the weathercock. After the rest of us said "Eh?" she went on to explain that some years ago it had been taken down because it had become dangerous and was stored in the tower. Substantial maintenance work planned for the church meant the whole tower would be scaffolded, so a contribution would make it possible to have the weathercock repainted and re-erected. £1500 was donated and the rest is history.

Casual conversation has revealed to me that not everyone understands weathercocks and not everyone is aware of the orientation of the village, but if you are clear about both, read no farther. The cockerel is designed so that it turns to face the wind, i.e. if it is facing west the wind is coming from that direction. In Bleadon it is easy to decide on directions if you simply remember that Celtic Way runs nearly due north and on a starry night you can easily pick out the Plough. I must admit I have not tried to see if the church floodlighting makes the weathercock visible, an omission I must rectify when the nights draw in.

Les Masters

With kind permission from Samuel French
A BLEADON PLAYERS PRODUCTION

Agatha Christie's

APPOINTMENT WITH DEATH

Directed by Charlotte House

CORONATION HALL, BLEADON

26 - 28 September 2019

Tickets £8 (small booking fee if booked online)

Tickets available at Bleadon Post Office or via

www.bleadon-players.co.uk



DB SECURITY SYSTEMS
INTRUDER ACCESS CCTV

LOCAL RELIABLE SERVICE



FREE advice and quotations

- Domestic and Commercial Security Alarm and CCTV Systems (Wired and Wireless)
- Access Control Systems
- Intercom Systems
- Security Lighting



20 YEARS EXPERIENCE

T 01934 260 017
M 07976 516 058
E darren.bishop.uk@googlemail.com

Bleadon in Bloom

We want to thank everyone who attended the Bleadon Outdoor Festival and let you know that we raised £210.00. We gave £70 to the Hawk and Owl Trust, £70 to Secret World and £70 to Bleadon Church funds. It really was a great day and we were pleased that so many people turned out to help and to bring their stands to the event.

We wait with everything crossed for the results day on the 11th of October where we will be going to Newquay to find out how we did. The event is over lunch time and the whole of the South West will be there. Please think good thoughts on the day and wish us well.

Thanks again

The Bloomers



Proud to be independent, vet owned and operated.

Still offering our clients our own 24hour Out of Hours Service.



WWW.AXEVALLEYVETS.CO.UK



Please call us on 01934 814156 for more details!



Unit V, Purn House Farm, Purn Way, Bleadon,
Weston Super Mare, BS24 0QE



Village Hall Report

Once again thank you for your response to the CONTINUOUS IMPROVEMENT

I believe it was the Japanese who pioneered the doctrine of continuous improvement in manufacturing and other industries. I don't know who first said that if you try to stand still in business you will go backwards. Both ideas apply to the management of a village hall.

An improvement that has already begun is the refurbishment of the lobby leading to the main hall, which had become very dark and unwelcoming in contrast to the lightness of the main entrance. The walls are to be repainted, light-coloured flooring will be laid, and proper rows of coat-hooks will be installed. The old doors have been removed and it has yet to be decided whether they will be replaced.

An adjustment under consideration is to the handrail outside the fire exit by the stage. The new fire doors are excellent but an unexpected consequence is that they do not open as widely as the old ones, leaving less space for people to get in and out. The likely solution is to remove the rail, shorten it and resite it.

The more long term improvement is the refurbishment of the kitchen, towards which we have been aiming for some time. We expect shortly to have a first design and estimate. This will open the debate on the details of the plan and tell us when we can expect to have sufficient funds. We are fortunate to have such a large space. The challenge is how best to arrange it to suit the wide variety of regular and occasional users.

Les Masters

NEW FIAT 500 120TH GET UP TO 6 MONTHS OF APPLE MUSIC^{®^}



AVAILABLE WITH **0% APR**
£500 FIAT DEPOSIT CONTRIBUTION*



HUTTONS FIAT, BRIDGWATER ROAD,
BLEADON, WESTON-SUPER-MARE BS24 0AW
TEL: 01934 813700 HUTTONS-FIAT.CO.UK



Fuel consumption figures for the Fiat range in mpg (l/100km): Urban 31.7 (8.9) – 54.3 (5.2); Extra Urban 47.1 (6.0) – 74.3 (3.8); Combined 40.4 (7.0) – 64.2 (4.4). CO₂ emissions 117 – 160 g/km. Fuel consumption and CO₂ values are obtained for comparative purposes and may not be representative of real-life driving conditions. Factors such as driving style, optional wheels, weather and road conditions may also have a significant effect on fuel consumption. CO₂ and fuel consumption values are determined on the basis of the measurement/correlation method referring to the NEDC cycle as per Regulation (EU) 2017/1153. ^Valid until 31/12/19. T&Cs apply. New Apple Music customers only. Existing Apple Music customers receive 3 months. *Offer available on Fiat 500 & 500X 120th range. 37 month term. Minimum 22% customer deposit. Models shown have options which will increase customer deposit. Fiat Deposit Contribution varies across the range. Optional final payment varies depending on version. 6,000 miles p.a. PCP sales only until 30/06/19. Subject to status. T&Cs apply. Participating retailers only. Fiat Financial Services, SL1 0RW. FCA AUTOMOTIVE SERVICES



DAVID PLAISTER

PROPERTY AGENTS | SALES & LETTINGS | AUCTIONEERS

01934 815053

www.davidplaister.co.uk