

Bleadon News

Winter 2018

www.bleadonparishcouncil.gov.uk

Issue 110



BLEADON

Many contributions
make up our local
news—get involved!

Getting Bleadon Ready to Bloom in 2019



Lifeline

Here when you need us...

Sedgemoor Lifeline provides 24 hour assistance to vulnerable people living in communities across Somerset. Our fully trained staff are available 365 days a year, giving families peace of mind.

We are the only 24 hour lifeline service in Sedgemoor that can attend to lift a non-injury faller.

We also offer other Telecare services such as smoke, carbon monoxide, fall and epilepsy sensors, which, if activated, will wirelessly connect to us immediately.

TWO MONTHS FREE - limited offer.

Set up a Direct Debit and receive the first two months free!

**For more information on how Sedgemoor Lifeline can help you or a family member feel safe in their own home, please call Sedgemoor District Council on: 01278 435776
or e-mail: lifeline@sedgemoor.gov.uk**

www.sedgemoor.gov.uk/lifeline

Lifeline is a service provided by Sedgemoor District Council

Sedgemoor
IN SOMERSET

October 2018



Allotment Gardens improvements

The Parish Council met with some of the allotment tenants on 3rd November to discuss potential improvements and new ways of working. They had some great ideas about tidying up and reshaping the space. There is a full report on page 25. Sheds, plot markers, clearing vacant plots, new signs – all this and more! If you would like to rent an allotment please contact the Clerk at parishclerk@bleadonparishcouncil.co.uk (or 07453 3583180). Annual rental is £17 for a full plot and £8.50 for a half plot. Excellent exercise and food for free!

Play Area improvements

The Play Area is meant to cater for children from 0 to 12 years of age. Apart from the kick-ball area, it currently only suits younger children up

to 5 or 6 years. Plans could include a rubberised surfacing to replace the bark; remove or replace the sandpit; wheelchair access to new accessible equipment. Please contact the Clerk by email parishclerk@bleadonparishcouncil.co.uk (or 07453 3583180) if you would like to discuss options and designs. Grant funding applications will be made to cover as much of the cost as possible.

Next Year

Our plans for next year include entering the Britain in Bloom competition and we hope that everyone will join together to support this ambitious plan. We are looking forward to the Open Gardens event in the summer and would love to see scarecrows again. We have seen the planning for the May Fayre and we think its going to be a bumper one! We have been successful in securing funding for the Neighbourhood plan and also we are pursuing funding for litter picking and village improvements. If you would like to support these initiatives please contact the Clerk.

And Finally

The final thing that we want to do is to wish you all a wonderful Christmas and hope that your wishes for next year come true. Our greetings extend to you and all your family. Remember to check with your neighbours and make sure they have a wonderful Christmas too.

BRIDGE GARAGE
Bridge Road, Bleadon, BS24 0AU 01934 812206
enquiries@bridgegarage.com

Servicing & MOT
Car sales
Repairs
Computer diagnostics
Air conditioning
Attended Filling station

Because we care

New Contract Ranger Service for the Village.

Adrian's Project Services has won the contract to provide Ranger services for the next 12 months. Adrian Leonard has considerable experience in similar roles for North Somerset Council and local parish and town councils. From 6th November he usually will be seen around the village on Tuesdays and Fridays, focusing on litter-picking, checking the play area, minor repairs and managing the noticeboards with of course numerous other tasks. Adrian's hours will vary throughout the year but will average 8 hours a week.

Mark Howe Gardening Services stepped in to provide interim Ranger services over the summer and has now handed over the reins (and the keys!) to Adrian. A big thank you to Mark and his colleague Steve for keeping things ticking over for us.



Any posters for the noticeboards can be left at the Post Office for the Ranger.



Whitehouse
Kennels & Cattery, Somerset

Whitehouse Kennels & Cattery are a family run pet boarding home. Having been in the animal care business for over 25 years we know the importance of your family friend and will provide a truly caring service.

Whether you are looking for pet boarding, relocating abroad, dog grooming, or buying a bed for your cat, Whitehouse Kennels & Cattery is the place for you!

Services include:

-  Pet Boarding
-  Day Boarding
-  Pet Export & Travel
-  Pet Shop
-  Cuddle Buddies
-  Collection & Delivery Service
-  Grooming Service
-  Wedding Doggie Services

OPEN EVERY DAY
10am - 1pm & 2pm - 6pm

For more information & prices contact us on:
T: 01934 750352 E: enquiries@p-e-t-s.co.uk or visit www.whitehouse-kennels.co.uk
Whitehouse Kennels & Cattery, North Rd, Eastertown, Lympham, Somerset BS24 0HS



Find us on Facebook


The Pet Boarding and Travel Experts



Home and dry

After over three years of fundraising Bleadon Youth Club has a new water-tight and insulated flat roof at last.

The Youth Club management committee and it's many friends and supporters have been earnestly raising funds over the past three years to replace a badly rotting and slightly leaky flat roof on its front extension.

After numerous Christmas raffles at the Queens Arms and the wonderful May Day Fayre fund-raiser we at last have the resources to commission the repair work.

Step forward local roofing contractor Joe M Roth to save the day and help keep our youngsters safe and dry for the next 25 years.

Joe and Gary were blessed with unseasonably dry and windless weather at the end of October and completed the job within the scheduled four days. With it

being half term we were able to get the work done with minimum disruption to the regular users of the hall.

At the end of the day the over-filled skip was testimony to the poor state of the rotten timbers and crumbling mineral felt that were removed. Fortunately the roof joists were still sound.

Now we have dry and insulated sports room, music room, foyer and toilets.

Next on the 'To Do List' - replace the disabled access door, replace the tatty suspended ceiling in the main hall and get painting.

Roll on another QA Xmas raffle.



Somewhere for our young people

On Thursday evenings from 7 'til 9 the youngsters of Bleadon and it's neighbouring villages have a safe place to call their own. Somewhere to chat, play and learn with friends. For many youngsters this is a first chance to begin growing up and becoming independent.

Most of the youngsters (between 10 and 17 years) just want somewhere safe and welcoming to hang out with their friends. Maybe play a game of table tennis, pool or Wii. Or simply chat over a soft drink and a chocolate bar.

May and Rachael are the the young YMCA staff that run the Thursday evening sessions. They offer a low key sociable atmosphere where the young members lead the agenda, but with skilled and qualified support from the YMCA youth workers.

If you have a son or daughter who wants to start standing on their own two feet pop along on a Thursday evening to check things out. For youngsters the drop-in youth club sessions are just £1.50 per week. The first trial session is usually free. It often helps if newcomers come with a friend or two to start.

PLUS somewhere for our young at heart

The Bleadon Youth Centre building is available for hire for other activities too.

The building is simple, colourful and robust enough for kid's parties and other celebrations.

If you want to know more call Keith on 01934 813 127

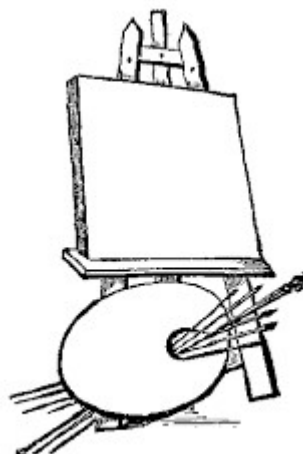
The Bleadon Art Group originated with a rebellion!

Originally it had been a water-colour class under the auspices of Weston College. The college financed the course with money from an outside source who, in order to see that the funds were spent correctly, issued a set curriculum that the class was obliged to follow. They expected to see examples of work at regular intervals showing progression and Ofsted inspectors would also scrutinise the running of the class.

The offer of points towards further education was little incentive for the students who were in the main of retirement age and boasted ex head-mistresses among their number. They simply wanted the opportunity to paint, get a little tuition and encouragement, and engage in friendly, social interaction.

When the college, in its wisdom, decided to increase the fees and at the same time shorten the length of the course it became difficult for the tutor - Michael (Mick) Colgan - to pour oil on troubled waters. As a solution to the situation he suggested that, if there were enough of the class in agreement, he would be prepared to run the class privately.

This was accepted unanimously and within a short time a treasurer was appointed, a few rules devised, fees determined and the Bleadon Art Group came into being.



Freed from the constraints of a set curriculum the members of the group produce work in a variety of media, including oils, acrylics, water colour and pastel. The membership rapidly expanded to as many as twenty members although a few places are currently available.

The group exhibits annually during the Bleadon May Day Fair and have successfully shown their work in other venues in and around Weston.

That many of the members have regularly attended the group over several decades speaks volumes

for its cohesive and friendly atmosphere. They create to the background of soothing classical music and enjoy a chance to chat over tea and biscuits. Guidance and gentle criticism is offered by the tutor who is an artist of many years experience.

The group boasts a range of abilities from complete beginner to very accomplished artists and welcome anybody who would like further their creative skills or wish simply to find a relaxing refuge from their busy lives.

The Bleadon Art Group meet every Thursday from 10 - 12 in the Coronation Hall, Bleadon Village.

Contacts: Kathy Quinnell (Treasurer) Tel: 01278 760031 Mob: 07783 806031

Mick Colgan (Tutor P.G.C.E. Bath Spa Uni) Mob: 07929521965

Bleadon Baby & Toddler Group

We are looking for a local volunteer to help out regularly with the Baby & Toddler Group on Wednesday mornings in the Coronation Hall. It's fun, friendly and enjoyable – lots of play equipment for the little ones, lots of tea and chat for the parents.

Contact Rachel Booth on 07856125163 or come along on Wednesdays.

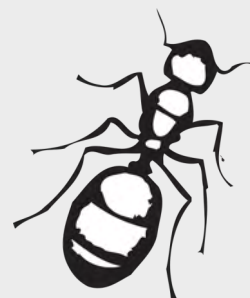


Bleadon Outdoors

Looking for volunteers who can dig, plant, trim or who have green fingers to help tidy up Bleadon for Bleadon in Bloom Contact

Kirsten—writer@kirstenhemingway.co.uk For the open garden event for the summer contact Georgina on dandgpeacock@gmail.com We also need a footpath and bridleway crew who can help to keep the access clear for our footpaths and bridleways.

Contact Andy Eddy on Tel. 814264



BLEADON SUGARCRAFT CLUB

Who are we you may ask and when do we meet. We meet monthly on the 4th Thursday of every month, except December and August, in the Main Hall of Coronation Hall 7:00 for 7:30 pm. The Club has been running since 2005, and is affiliated to the National Sugar Art Association.

We are a friendly bunch of cake and sugarcraft enthusiasts who enjoy sharing our skills and learning new ones. There is something for everyone for the person who wants to learn to decorate their child's birthday cake to the more experienced sugarcrafter who makes exquisite sugar flowers to adorn a wedding cake. A wide programme consist of demonstrations from professional demonstrators, including national and international demonstrators, who show us how to make life like sugar flowers, model figures, carve a novelty cake, airbrush and many other sugarcraft techniques. Our 'have a go' evenings are very popular where we practise a new skill and share our experience with one another. Meetings are always accompanied by tea, coffee and biscuits, a raffle plus a great deal of fun.



Sometimes 2 hours is just not enough to learn a new skill that catches our attention. A day's workshop satisfies our need. A

day's workshop was organised to decorate a dummy cake on a Lindy Smith's design, 'A hare in a wildflower meadow'. Ten



members used sugar modelling paste to make a bas-relief hare on the side of a 6 inch tall cake, colouring the hare with coloured pastes and dusts, using vermicelli for the whiskers. Other techniques used a fluid writer to draw flower stems and leaves. Moulded sugar flowers were added. It was a full on day but extremely enjoyable.

Our members like to support a local charity each year. This year we elected to support a local lady who does a huge amount of fund raising for animal charities, particularly Dogs Detecting Cancer. At our October meeting we had an evening of making Christmas Cake toppers and plaques to donate to her Christmas Coffee Mornings, to help with fundraising.

As with many other clubs our membership has declined over the past few years for various reason, even with the national interest in cake making and decorating generated by the Great British Bake Off and Extreme Cakes. The internet is a great resource with on-line tutorials on any skill you can imagine. However, making and decorating cakes could be a lonely experience if there wasn't any interaction with other people. Belonging to a Club helps a hobby to become social interaction. The advice given by your fellow sugarcrafter can be far more useful than the solutions offered on YouTube when you run into some difficulty executing a cake design. I know which I prefer.

We are a welcoming club open to new members, new ideas and suggestions. For further information contact Sue on 07535915582 or Email bleadonscraftclub@gmail.com or follow us on our Facebook page [bleadonsugarcrafters](https://www.facebook.com/bleadonsugarcrafters).

BLEADON SHORT MAT BOWLING CLUB

After a very successful season last year the Club finds itself needing new regular participating members as several of our members have become indisposed and there are, on occasions, insufficient members to enable the Club to open for play. We are therefore looking to recruit anyone interested in playing socially (telephone Graham Rogers on 811571). We open Sunday & Tuesday afternoons and Friday evenings.

On the social front we have, this autumn, held a very successful skittles evening and have plans for a Christmas event and an Annual Dinner at Beachlands Hotel in January.

The league team commenced its fixtures in October and won one game and drew the other in matches to date.



RETURNING TO EXERCISE AFTER A BREAK!

Emma Hunter Graduate Sports Therapist (BSc Hons)

Are you currently thinking about changing your exercise routine or starting again as your New Year's resolution? Or do you normally have a break over the holidays & then struggle to get going again?

Many people return to exercise in January after a long break or decide to try something new. Here are my top tips to help avoid injury & to motivate you to keep it up!

Start slowly – Your body needs to get used to exercising. If you are planning to start running, begin with a walk/jog programme. There are lots of apps out there such as Couch to 5km to give you a programme to follow.

Also running groups & local councils often run Couch to 5km programmes to get you started.

Warm up before & cool down after each session – Make sure you include these to help prevent injury. If you are not sure what to do, take advice from a Health Professional or Personal Trainer.

Have rest days – Your body needs time to recover from exercise whether you are regular or just starting out.

Try something different! If you have joined a gym before & not enjoyed it, try a group exercise class, sports club or training outdoors. Try lots until you find your favourites & a routine that you think you will be able to stick to. Your body will thank you for a variety of exercise.

Weight training – If you fancy giving lifting a try, make sure you take some advice for a qualified trainer/coach to ensure that you are using the correct techniques.

Train with a friend or family member – You can motivate each other especially when one of you is not up for getting out & exercising!

Know when to stop! – If you have any sharp pains during or after exercising, stop! Find an injury professional to assess what is wrong & to help you to progress through the issue in a safe way.

Any questions or anything you would like to see in future publications please get in contact via emma@ehsportstherapy.com



A CHRISTMAS MONOLOGUE (WITH A HAPPY ENDING)

In the good old days of the music hall a regular item used to be a monologue, perhaps sad, perhaps humorous, but always dramatic. One of the best known began "It was Christmas Day in the Workhouse" - you can imagine the picture that followed. Try blending "Oliver Twist" with "A Christmas Carol". Fortunately, workhouses are no longer with us, but doghouses undoubtedly are so it is time for an update.

The Tragic Beginning

It was Christmas Day in the doghouse.
The husband skulked in fear.
He cowered in the boghouse,
Avoiding his near and dear.
He dreaded her screaming and nagging,
Her shouting and slamming of door.
He knew neighbours' tongues would be wagging.
The noise was too loud to ignore.

It Gets Worse

He should never have stayed so late drinking.
The outcome was always the same.
He shivered and felt his heart sinking.

There was nobody else he could blame.
His mates were in similar trouble,
With ruthless, implacable wives.
They know every trip to the pub'll
Bring sorrow and grief to their lives.

The Happy Ending

The guardian angel of drinkers
Was watching this scene from on high.
She switched on her turbo propellers
And swiftly swooped from the sky.
From household to household she flitted,
Distributing goodwill and love.
Then, having herself well acquitted,
Flew back to her station above.

Best recited with as much drama as possible but can be sung to the tune of the Eton Boating Song.



Les Masters

Bill Hewitt's Bit of Bleadon Wildlife

Hedgehogs don't always hibernate for the whole winter. In mild weather they may come out and forage. If you see a hedgehog out in the day or one that looks thin (ideally they need to weigh 550g or more to get through the winter) they may need help. Get them checked out by a local rescue centre like Prickles or Secret World. If you know a hedgehog is coming out to forage at night, you can provide food. Never bread and milk as they are intolerant to cows milk and bread has little nutrition. Rather cat food or biscuits (meat not fish and not in sloppy gravy) and water. Pet shops also sell hedgehog food which is also good. When tidying up the garden be careful not to injure hedgehogs that may be hiding under piles of long grass or leaves. Strimmer injuries are quite common sadly. You can provide hedgehog shelters but don't be offended if they choose somewhere else to hibernate next winter.



Bleadon is very lucky to have a healthy population of water voles, a species that has been in decline nationally. There aren't many known populations in North Somerset so we ought to look after ours!

Although Ratty in the Wind in the Willows was actually a water vole, they look much like hamsters rather than rats. Almost entirely vegetarian they munch through a variety of plants that live in and around water. They are often seen holding a stem in their hand like paws as they munch. Babies are born inside the burrow and don't emerge until they are nearly half grown. A stroll along the rhyne on a summer's evening will often produce several sightings of voles on the bank or in the water. If you don't see them,



listen out for the characteristic plop as they enter the water.



Kingfishers, often seen along the river Axe in the summer, are more frequently seen along the rhyne in the winter time. They take advantage of the clearer water as the weed dies back and the shelter. Look out for them perching on vegetation on the banks of the rhyne or even sitting on drainage pipes. Listen out for their piercing calls and a flash of blue or orange as they make darting flights across the water.



A lot of you will probably have seen little egrets in and alongside the rhyne and the river for a number of years now. I suspect fewer of you will have noticed that last winter, especially when the river level was low, Great White Egrets (pictured above) were regularly spotted along the Axe as well. Great White Egrets were almost unheard of in Britain 10 years ago have established breeding populations on the Somerset Levels and forage further afield out of the breeding season. Now a third species, the cattle egret is becoming more numerous and is something to look out for. As the name suggests they are often seen feeding with grazing animals, they can also be seen near water or on low lying fields.

Helping Garden Birds over winter.

There are various ways you can help your garden birds over the winter. You can get a lot of pleasure watching and identifying the birds and help them survive too. Leaving berries such as holly on the bush will provide a good food source for birds. If you put feeders out then put out a variety of food if you want to see the widest range of birds. Although more expensive, I find that sunflower hearts are very popular with the seed eaters. Peanuts are also good, but preferably not in plastic nets as birds can get tangled in them. Fat balls, blocks or pellets are also good.

It is important to provide clean water for drinking and bathing too and try to keep a supply of unfrozen water in cold weather

It's best to put your feeders close to a bush or tree, so that birds have a place to be safe from predators such as cats or sparrowhawks, close at hand. It is important to keep your feeders clean as dirty feeders can spread disease. Try to use a disinfectant safe for birds as some

household chemicals can harm birds even if the residue is small.

Finally, although birds don't nest in winter, nest boxes can be used for roosting. More than 50 wrens have been seen emerging from a single nest box! They do this to share body heat in cold weather.

Bill Hewitt



SPARE A THOUGHT...

This year over 3,000 rescue dogs will be spending their Christmas Day at a Rehoming Centre rather than in a home of their own. Dog charities like Dog Trust will expect around 100 more to be handed over to them during the Christmas period despite the fact that Dogs Trust's slogan "A Dog is for Life, Not Just for Christmas" is 38 years old this year. We take in the stray dogs for 3 Local Authorities and typically we get 2 or 3 dogs in over Christmas that are never claimed.

As you are tucking into your Christmas dinner spare a thought for those rescue dogs and the hundreds of Animal Charity staff and volunteers who will be working on Christmas Day to care for them and make their stay as happy as possible. As well as providing round-the-clock care for new arrivals, the teams will be spending their Christmas Day walking and playing with the dogs and giving them their special Christmas dinner and treats which have been donated by members of the public. Anyone interested in giving a rescue dog a home please can you contact one of the local centres:

www.dogsfriends.me.uk

HAPPY LANDINGS ANIMAL SHELTER Pye Hill Pylle Shepton Mallet BA4 6TG 01749 860 350

RSPCA Brent Road, Brent Knoll, Highbridge, TA9 4BL. Tel. 01278 782671

DOGS TRUST Ilfracombe Hazeldene West Down Ilfracombe North Devon EX34 8NU 01271 812709

BATH CATS AND DOGS HOME The Avenue, Claverton Down, Bath BA2 7AZ 01225 787321

NAWT Somerset Heavens Gate Farm West Henley Langport Somerset TA10 9BE 01458 252656

HOLLY HEDGE ANIMAL SANCTUARY Wild Country Ln, Barrow Gurney, Bristol BS48 3SE 01275 474719

Thank you to all the supporters of the local animal charities. This is how our staff and dogs will be preparing for the big day!

"All harnessed up and ready for our cuddle buddy visits to local residential homes for some Christmas fun. Love Santa & Reindeer pug!!"



All at Whitehouse Kennels and Cattery

Bleadon Village MONTHLY MARKET Saturday

1st Dec Xmas Mkt
19th Jan
16th Feb
16th March



Secret World are bringing Owls to the Christmas Market



Find Angus for Storytime

You will find 30 stallholders at every market. Over 50 in December!

Bleadon Village Market is a social and fundraising event run every month of the year by volunteers from, and for, your village.

All the profits from running the Markets go to the Halls' Improvement Fund; keeping the village halls up to scratch for the many groups that use them every day. The next big project is the Main Hall Kitchen!

If you can spare just a bit of time once in a while, speak to Jo at the Market. We are a friendly bunch and every little helps!

Come to the Christmas Market and stock up with festive goodies. Flavoured Gins, Chocolates & Truffles, Cakes, Cheeses, Pork, Bakery, Fair Trade, Cider, Preserves, Sausage Rolls, Pies and Much More!



Christmas Stockings can be filled from our many talented craft and gift stalls. You will find beautiful jewellery, sewn gifts, toys, books, decorations, wood crafts, collectables, accessories, scarves, ladies fashions



A big "Thank You" to our Market Volunteers. It wouldn't happen without you!

Find out more on Facebook and www.bleadon.org.uk/market

Its all happening at the Queens this Christmas time!

The panto and raffle is on Sunday 23 December. Start time is usually 6pm in the pub car park.

Directed by the wonderful Jacqui Hall-Scott

Funds raised in the Big Prizes Raffle go to the Bleadon Youth Club.



Bleadon Parish Plan 2009

103 improvements for a better Bleadon

Have your say at the Annual Parish Meeting on Monday 20 April at 7.30pm in the Cornelian Hall, Bleadon

Find out more and keep up to date on the Bleadon Parish Plan at www.bleadonparishcouncil.gov.uk

See the background to the Bleadon Parish Plan and the full Action Plan at www.bleadonparishcouncil.gov.uk

20 April

BLEADON VILLAGE NEIGHBOURHOOD PLAN

The group entrusted with this task have now been granted funding and will be able to proceed. Our Terms of Reference state that there should be a predominance of villagers in the group. We do have three councillors and three villagers at present but we need more of you to decide what you want for the future of your village.

THE FUTURE OF BLEADON AS DETERMINED BY THE PEOPLE OF BLEADON MAKE YOUR VOICE HEARD THIS IS YOUR CHANCE TO INFLUENCE CHANGE

This plan will provide guidance to North Somerset Council on how we would like to see the village develop over the coming decades.

Do you have views on ; plans for building, the 370, recreation, facilities for young and old etc. etc. or anything else you consider important.

Some of you may remember the Parish Plan from 2009 pictured here. Just like then we need a group of local people who are prepared to take a lead. If you are keen to play an active role in the process please contact either:

Parish Clerk parishclerk@bleadonparishcouncil.co.uk
OR

Gill Williams gwilliams28@btinternet.com OR on 813255

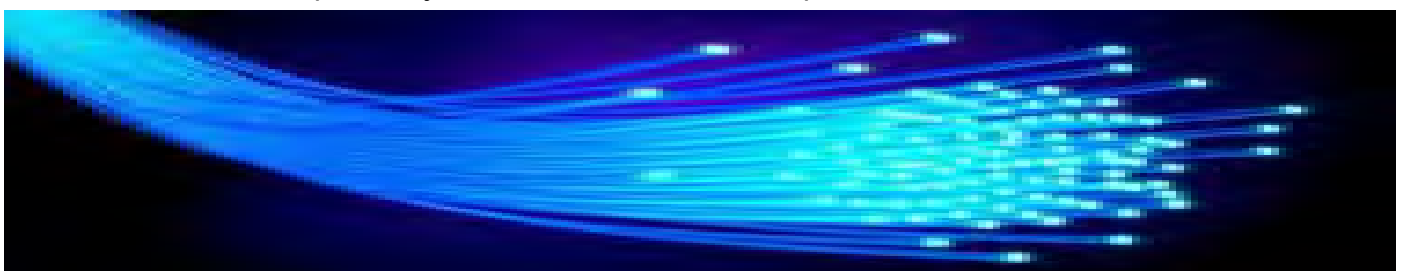
Bleadon Broadband:

Full fibre broadband is rightly being recognised as an essential utility and a key driver of regional productivity. An independent research study shows that almost half (46%) of people think greater access to faster broadband will boost their local area's economy, helping businesses expand, attracting more talent and fueling job creation, which is why it ranks as their single most-wanted infrastructure investment.

The internet impacts thousands of people's daily lives whether it's being able to have a harmonious family life, the ability to work from home or run businesses and their online systems efficiently, the demand for highspeed, reliable broadband is only set to increase. It's no secret technology is evolving at an alarming rate, we're even seeing website coding being introduced to primary school curriculums and careers that are dependent on having internet access are continually on the rise.

Despite the demand for infrastructure capable of handling modern day broadband requirements, the amount of people still struggling with ill-equipped broadband is staggering. Rural communities in particular are being left behind when it comes to investing in broadband infrastructure. Effectively parked in the digital slow lane, rural communities are often deemed expensive and hard to reach by large broadband providers, so are left will unreliable and outdated copper wire systems subjecting recipients to 'Up To' speeds and frustratingly poor service.

To cope with today's and the future's broadband demands, Britain needs an infrastructure overhaul and step away from outdated copper wire systems and move into the full fibre era. Only with direct-to-the-premise full fibre broadband can residents and businesses have a truly futureproof broadband solution they can rely on for generations to come. The good news is, communities across the South West no longer have to be left behind as brand new, independently owned, full fibre broadband providers are available in the South West.



**You are invited:
Christmas 2018**



At Bleadon Church

Sun Dec 9th, 4pm "Christingle" at Bleadon Youth Club

**Wed Dec 12th, 12.30pm Lunch and Carol Singing at
the Catherine's Inn (Ring 815 404 to book)**

Sun Dec 16th, 3pm Carol Service:

Carols and Christmas Readings

Christmas Eve 4.30pm Crib Service:

Young and Old celebrate together .

Christmas Eve 11.30pm Midnight Mass:

"We welcome the Light"

**Christmas Day 10.15am A simple Morning
Service with Carols.**

For more info, please go to: www.bleadonchurch.co.uk

50 mile fund-raiser

Charlotte Oliver's amazing 50 mile run along the Mendips raised £135 for a very appreciative Bleadon Youth Club

The Butcombe ultra marathon is 50 miles of beautiful off road running available on our door-step. It connects several of the Butcombe pubs (including the Queens Arms) all across the Mendips. You may notice the little Butcombe ultra badges on the local gate posts up on Bleadon Hill and around the village.

I first started running three years ago and it has slowly progressed to my first ultra marathon (Butcombe ultra), I do a lot of solo running with my labrador *Lincoln* but have also joined Weston Athletes Club and more so the trail group they run (which is fab and if you're thinking about it I highly recommend going). Between the group sessions and solo runs I was clocking up plenty of miles for the ultra, along-side my triathlon training.

When race day came it was a gloomy day and I was frozen waiting to start but when I soon saw some familiar faces this made me feel more confident about the huge

task I was about to set myself. We started off up a steep climb and by the top I was taking layers off as the sun came out, we ran around Cheddar, into Axbridge and up Crook Peak. The views are breath-taking and a thankful distraction from the hills. Then it was down into Loxton and up onto Bleadon Hill before a quick pit stop at the Queens Arms. Here the lovely Caroline Lance joined us for a few miles to offer a fresh face and moral encouragement. Back up the hill and across towards Churchill over rolling hills and muddy footpaths, reaching Rowberrow we were now just before half way.

If I'm honest because I'm not entirely familiar with anything further east than Charter House the rest of the run was all new to me, I had a few lows where I was getting tired but the wonderful couple who never left me behind for the entire run were amazing at picking me back up again. I knew all



that mattered was getting to the finish. When we arrived at Priddy it started to get dark and our legs started to seize up with the cold. Every stile we had to climb over took its toll on our legs, I felt like they were never ending! Eventually we could see the finish! When we came down the last hill to the finish it was such an amazing feeling that we'd made it!

I felt it very appropriate to use the run as a way to raise funds for Bleadon Youth Club as its local and as a teen I was regularly at the club on a Thursday evening. Anyone wanting to take up running or raise money for our local community don't hesitate, as it's great to give back into our village for the future and running is great for you mind and body.

*Charlotte Oliver
Shiplate*



Bleadon Horticultural Society

This year's coach trip in July was to the RHS Garden Rosemoor in North Devon. Seasonal highlights included the Hot Garden, a prairie style garden with repeating blocks of fiery colours, the fragrant Rose Gardens and the spectacular Long Borders. Plants in the Mediterranean and Exotic Gardens were thriving in the dry conditions. Tea and cake revived us for the drive home and we all enjoyed the visit.

We held our 44th Summer Show at The Coronation Hall on 1st September. Local exhibitors submitted 250 entries in classes covering fruit and vegetables, cut flowers, pot plants and homecraft, as well as junior classes which were very well supported.

A wide variety of junior skills were demonstrated from bracelet making and planting up a child's welly to art-work for the Royal Wedding, for which Rosie Presburg won best children's exhibit.

The theme this year of the Royal Wedding was also reflected in the floral art classes including some stunning bridesmaids' posies. Libby Lockyer won the best floral exhibit with her



interpretation of the film Mary Pop-pins, as well as the award for most

points in homecraft. In particular Amanda Du Rose and Edward Gill both collected numerous silverware for their prize winning entries from our Honorary Patron, Chris Cudlipp.

We also remembered our long term member and friend Maggie Pettitt with the addition of a new award this year in her name for 'Best in Show Apples'.

Our next event will be a Beetle Drive and American style supper on Tuesday 18 December at 7.30pm in the Coronation Hall. Tickets costing £1.50 must be bought in advance by phoning 07801 386477. All are welcome.

Rose Benjamin and Libby Boucher



How to keep your Christmas tree fresh

We get asked this question a lot when we selling Christmas tree in Bleadon, more important is the question of when to buy and put your Christmas tree up. We always say that these trees are natural living things, and once they are cut they begin to die so the right care can help them to last a few weeks.

Caring for your Christmas tree can be straight forward, the main thing is to keep it well watered. Your tree may drink 2-3 pints of water per day, depending on the size and your central heating settings. A well-watered tree will lose fewer needles but all fresh trees will lose some.

Nordmann Fir and Traditional Norway Spruce are the most popular types of trees and the ones we stock.

As most of the trees are cut about middle of November there is really no need to wait and prolong the buying of your tree.

The benefit of buying at the beginning of Dec is that you get a wide choice. As soon as you get home cut about 3 cm off the trunk of the tree using a panel saw. This will help to take more water. If you are not

setting up your tree straight away put it outside in the bucket of water and take the netting off. Keep it in a cool dry place away from the direct sunshine.

The best time then to put it up is around 10th-15th Dec. Make sure your stand is big enough, fill it in with enough water. Place it away from heat sources, like fireplaces and radiators as this is one of the main factors which will affect the life of a Christmas tree. Keep it away from

the direct sunlight. Decorate your beautiful tree and enjoy your Christmas festivities!

Written by Oliver Eade

Eden Greenery

Sale of Xmas trees from 1st Dec 2018, behind Bleadon Post Office

Christmas Trees For Sale

Unit 7, Purn House Farm
Behind Bleadon Post Office

Open Every Day
9.30am ~ 5.30pm
From 1st December

Live Christmas Trees traditional and non drop
Cut and potted
3ft to 10ft
Christmas Tree Stands

A selection of christmas decorations lights and more



eden
GREENERY

www.edengreenery.co.uk
info@edengreenery.co.uk

BLEADON WI

The New Year is often the time when thoughts turn to exercise but some members have started early: having had a taste of 'Pilates' at our September meeting, some members have now joined classes. Two teams have signed up for skittles and are looking forward to their first matches against other WIs. Members have also signed up for ten sessions of 'Walking Netball', with a further possible ten more, all with the help and support of the English Netball Association – it's amazing how it all comes back! Members were also inspired by Emma Britton, BBC Radio Bristol who spoke to us about her recent 'Couch to 5k in 9 weeks' challenge – well done, Emma!

Looking forward, plans are in hand for our **Carol Service** at St Peter's and St Paul's on Friday, **7 December** at 6.30 pm, to which all are welcome. This will be followed by carol singing at The Queen's Arms where we will be collecting for Mothers & Toddlers and the Youth Club.

We go forward to the New Year with a new President, Michelle Harper and new members on committee – members are grateful for the leadership of former President, Hazel Saunders and her committee. Next year will see our first big milestone, when we celebrate ten years as a WI – ten years of good speakers, great activities and happy memories!

Bleadon Belles

Christmas is coming' for the Bleadon Belles – since starting rehearsals in September, we have been busy brushing up on Christmas carols and learning some exciting new songs. These will be for Christmas performances in December for Hutton Ladies, the Bleadon WI Carol Service and visits to local nursing homes.

Taking part in the Highbridge Festival and possibly holding an exciting charity fundraiser event in the village are also being considered for the coming year – watch this space!

Libby Lockyer



Could you help at the May Day Fayre?

Volunteer helpers needed for the day.

- Car parking and traffic management
- Serving refreshments in the Cory Hall
- Making sandwiches
- Selling ice creams
- Running a games stall
- Setting up and dismantling gazebos + stalls
- Running the skittle alley
- Running a Book stall
- Helping with plant sales
- Helping with bric-a-brac sales
- Gatekeeper

If any of these jobs appeals and you are up for a fulfilling fund-raising day, please get in touch now: keith.pyke@btopenworld.com 01934 813127

Free dementia conversation cards to help keep families and friends close after diagnosis

Award-winning older people's charity, Alive, has launched a free resource that offers conversation ideas and advice to help [family members and friends to feel close to a loved one following a diagnosis of dementia](#).

Alive is the UK's leading charity enriching the lives of older people and training their carers to engage in meaningful ways. Not only does it often see people living with dementia become socially isolated, lonely and depressed through lack of engagement, but all too often the families and friends of loved ones can feel alone too, knowing that their relationships are going to change. It can sometimes be hard for people to know what to say or do. But evidence from Exeter University suggests that just 10 minutes of meaningful conversation per day can have a positive impact on older people's wellbeing.

Based on delivering many thousands of creative and arts-based activity sessions for older people and talking to carers and loved ones since being founded in 2009, Alive realised there was a limited number of resources available to help build conversations with people living with dementia. Families said that those free resources available tend to be text heavy, confusing and overwhelming, while more appealing resources come at a cost many cannot afford.

Alive's free resource pack contains pages of illustrations and ideas that anyone can use as simple conversation prompts with their loved one. The questions are themed around specific interests like gardening, school, travel, and music; topics that everyone can relate to. Designed by Alive's specialist team, the conversation cards enable

people living with dementia to recall and share memories more confidently.

The cards were piloted with people living with dementia and their families, friends, carers and care groups, and feedback from the trial was overwhelmingly positive.

Families reported that the questions "prompted humour, memory-searching, emotion but mostly pleasure and pride" (Janet, wife of Pete who is living with dementia). They allowed people to find out more about a person's life and feel closer to them at a time when, so often, families feel like they are losing the person they knew.

Alive's CEO Simon Bernstein says "Helping people with dementia to stay connected to the people around them is key to their happiness and quality of life. As dementia develops it can become harder and harder for people with the disease to interact and converse with family members and friends who may also feel ill-equipped to cope. This can lead to people living with the disease feeling alone, socially isolated and may result in their gradual withdrawal from ordinary interactions. Often, family members

may experience feelings of guilt and helplessness as a result. We hope this free resource will support those with dementia, their loved ones and carers, to feel closer, providing an enjoyable way to share special memories and experiences together at a time when it matters most."

The cards are available as a free downloadable pdf from the Alive website <https://aliveactivities.org/alive/en/resources/conversation-cards-for-dementia/>

The charity is asking people for voluntary donations to support its aim to light up the lives of many more older people.



Mark Howe

Gardening Services

9 Malvern Road, Weston-Super-Mare

Phone 01934 413594 or 07773272003

- REGULAR GRASS CUTTING
- HEDGES AND TREES CUT
- SHRUBS PRUNED
- FENCE PAINTING
- TURFING
- PATIOS AND CHIPPINGS LAID
- LAWN TREATMENTS
- DECKING ERECTED
- PATIOS AND PATHS PRESSURE WASHED
- FENCING ERECTED AND REPAIRED
- SHED ERECTION & REPAIR
- BLOCK PAVING REPAIRS

Being a Community First Responder (CFR)

What is a Community First Responder?

A Community First Responder is a fully trained, unpaid volunteer who operates from their home address. The Responder will declare themselves available for despatch to the local ambulance control centre to attend medical emergencies ahead of the ambulance crew within their local area using their own private vehicle. Responders are issued with uniform, a full medical kit ranging from wound dressings to oxygen cylinders and masks, and a pager which enables us to book on or off duty as well as receive details of the emergency.

It is totally at the discretion of the Responder as to how often and what times we book on for duty, although an approximate requirement is around 12 hours per week. This makes it ideal for fitting in around any individual's lifestyle with regards to work, parenting or social activities.

Why did I become a CFR?

Around eighteen months ago, I realised I had a craving for some excitement and fulfilment, a feeling I hadn't truly experienced since leaving the armed forces some ten years previous. I looked in to various volunteering roles within the fire service and police force and I eventually stumbled upon the CFR advert through the NHS job site. This appealed to me more than anything else, despite having almost no medical background aside from basic military first aid and the occasional first aid at work course.

After applying and completing a successful interview, I was offered a place on a training course which would run across two alternate weekends. Although lasting only four days, an enormous amount of knowledge was gained. Our instructors covered everything from choking to bee stings, as well as a considerable amount of training on Basic Life Support (BLS) and Cardiopulmonary Resuscitation (CPR). After successfully passing the course, the final piece of training was to complete one shift as part of an operational ambulance crew (known as 'third manning') which gave us a fantas-

tic insight in to the incredible work the service does.

What happened then?

Kit and uniform was then issued and I was 'live'. To say I was nervous would be a huge understatement! A feeling shared by the majority of my co-trainees! Never in a million years did I ever envisage being summoned to a medical emergency, let alone by myself! Would I remember all the training? What if I got there and couldn't remember anything? I was beginning to wonder what I'd let myself in



for.

Luckily, from somewhere, I summoned the courage to book on and received my first call out several hours later. Although not a drastic life or death situation, the feeling of sheer terror as I drove through Weston to the address was almost overwhelming! Upon arrival, all negative emotions and doubts disappeared and the training and professionalism took over. Everything came flooding back and I dealt with the situation until the ambulance crew arrived, who then complimented me on my actions and my handover. The first job was out of the way and my confidence was now through the roof!

Since then

In the relatively short time I have been a CFR, I have attended a wide variety of incidents, some as serious as cardiac arrests and high speed RTAs. Some have ended well, and inevitably some have not. As well as responding, I have completed many more third manning shifts as part of the crew

which are always fantastic for gaining experience. The crews at Weston station are always happy to pass on their knowledge and I am incredibly lucky to say I have gone on to make some really good friends. I can honestly say without a doubt that I was successful in my pursuit of excitement and fulfilment! In fact, I have now decided that my long term future lies within the ambulance service and intend to make the transition from volunteer to full time ambulance crew as soon as possible.

CPR/ BLS

All responders carry an Auto External Defibrillator (AED), or 'electric shock machine' as it is often referred to. This is arguably the most important piece of equipment in our entire kit and can often mean the difference between life and death following a cardiac arrest. The AED detects the current status the heart is in and will sometimes advise a shock in an attempt to re-establish an effective rhythm. Chances of survival increase dramatically when using an AED combined with CPR.

As well as being carried by emergency personnel, AEDs are becoming more common in public places for anyone to use in case of a cardiac arrest, including **Bleadon Village Hall**. Despite their incredible abilities, AEDs are surprisingly simple to operate as the user is guided step by step by audio instructions. Also, I firmly believe everyone should have a basic knowledge of CPR as nobody knows when they may stumble upon an emergency. Good CPR guides can be found at www.nhs.uk

I hope this has been of some interest. I cannot recommend becoming a CFR enough. If interested, keep an eye on www.jobs.nhs.uk for the next batch of recruitment.



The Universe from Bleadon

Pete and I moved to Bleadon in 2010. It offered just the kind of environment we were looking for. We desired the rural life, to be able to send our children to excellent schools but above all, we wanted a darker sky.... Pete and I are both Astronomers.

Shortly after our move, we set about constructing our long dreamed of home observatory,. All in all it took 4 months from start to completion and the final installation of our Meade LX200 Telescope.

In 2012 and 2013 Pete was a finalist in the International Astrophotographer of the Year Competition. This is a highly regarded competition and attracts the best from all over the world, most notably those who originate from less light polluted skies and are trouble free with cloud and weather! Images taken by Pete from our home observatory still grace the Royal Observatory Greenwich Planetarium, which has, we feel put our little Somerset village squarely on the astrophotography map.



Whilst Pete was rising in the Astrophotography World, I was quietly busy in Professional Space Outreach Education. I established Space Detectives in 2013 and since then, both myself and the business have gone from strength to strength.

In 2015, I was asked to become one of the 9 UK Space Ambassadors working for ESA (European Space Agency) here in the United Kingdom. This has enabled me to not only meet Tim Peake (UK Astronaut) on several occasions but also to engage with over 3500+ children within South West schools, encouraging them all to look beyond our own planet.

So What About Bleadon Skies?

The night sky throughout the year offers us the opportunity to see various objects of interest, whether observing with just the naked eye, binoculars or a telescope.

October and December, there are a few objects which are well worth hunting for in the Bleadon skies.



Constellation of Pegasus

This is quite an easy constellation to observe with the naked eye and can be found by looking due South at around 10pm. The main feature is the square made up of four bright stars, which denotes the body of the horse. The square of Pegasus leads us into the constellation of Androme-

da, which contains one of the most famous deep sky objects, The Great Andromeda Galaxy .



The Andromeda Galaxy contains around one trillion stars and lies approximately 2.5 million light years away from Earth. This is one of the brightest deep sky objects and can be seen with the naked eye from a dark site. Unfortunately, due to the ever increasing amounts of light pollution we have to deal with, it will take binoculars to pick out this fantastic object from Bleadon.... But well worth it, considering the light you will see has travelled across deep space for 2.5 million years to reach your eye!!

Other objects of note are the constellations of *Ursa Major* or *Cassiopeia*. Both of these are what are known as "Circumpolar Constellations" which means that they never set below the horizon and can be seen throughout the year. Part of Ursa Major contains the asterism known as the Plough, which most people will be familiar with.

The Plough Asterism can be used to locate Polaris, otherwise known as the North Star. This can be found by projecting an imaginary line through the stars of Merak and Dubhe and is the star about which everything else in the night sky rotates as the Earth spins on its axis.

For those that wish to stay up later, the constellation of *Orion* rises in the East at around 11.30pm. A very recognisable constellation and home



to another beautiful deep sky object known as the Orion Nebula. This nebula (from the Latin word meaning mist of cloud) is an enormous region of mainly Hydrogen Gas and is the birthplace of new stars. Our own Sun

was born in a nebula around 4.6 billion years ago. It really does sadden me to have to keep repeating the words "From a Dark Site," but Bleadon no longer has this due to poor lighting. When we first moved to Bleadon, the sky was relatively dark, however due to the intense lighting we now have, particularly from Marshalls Quarry, we have lost the ability to look up at the night sky and see the wonders that we once could see. This joy is solely reserved for either weekends or much later in the evening, once these lights have been switched off.

This is a shame... a real shame.... Quite aside from the environmental pollution (the sky is 50% of the world around us), no one seems to care about the effect on human health, wildlife, or the fact that observing the night sky should be a simple human pleasure and one that used to be passed from generation to generations, as was the case in our family.

Jo Richardson FRAS
Space Detectives
ESERO-UK Space Ambassador

Bleadon Open Gardens Day

Everyone loves an open garden day! Whether it's to have a good nose, or to gain inspiration for one's own 'patch', or to simply bask in the tranquillity created by other gardener's hard work. Maybe even for the refreshments and to be outside. Whatever, we thought it was high time Bleadon tried such an event.

The outline of the day is that volunteered gardens will be open on **Sunday 9 June 2019 from 2 until 5**. Programs, which admit entry to the open gardens, will be on sale from the Coronation Hall for **£5 each**. Cream teas and cakes will also be available there. The proceeds will be split 3-ways - between the church, Avon Wildlife and Secret World Wildlife Rescue. We hope that representatives from the charities will be there on the day.

So to make this day a success, we obviously need volunteers. Clearly, we need people to open their gardens. If you would like to do this, please use the form in this magazine and return it to me ASAP.

Other volunteers are needed as follows:

- to sell programs from the hall
- to sell raffle tickets from the hall
- to donate cakes and scones to sell
- to staff the kitchen to serve the refreshments

If you can help please get in touch and when completed, please return the form to: G Peacock, Durlston, Celtic Way, or email to: dandgpeacock@gmail.com Or Ring 01934 814237 (Get in touch if you would like the form via email)

EXPRESSION OF INTEREST FOR OPENING YOUR GARDEN
SUNDAY 9 JUNE 2019

NAME:

ADDRESS:

PHONE NUMBER:

EMAIL ADDRESS:

BRIEF DESCRIPTION OF YOUR GARDEN:

IS IT SUITABLE FOR WHEELCHAIRS:

IS IT SUITABLE FOR LESS MOBILE VISITORS, FOR EXAMPLE PEOPLE USING WALKING STICKS?:

IS THERE SEATING AVAILABLE FOR VISITORS?:

IS THERE PARKING?:

ARE YOU WILLING FOR DOGS ON LEADS TO VISIT?:

PLEASE CONFIRM THAT YOU HAVE OBTAINED CONSENT FROM YOUR INSURANCE COMPANY TO PARTICIPATE IN THIS EVENT. (MOST INSURERS WILL BE FINE AND WILL NOT CHARGE YOU ANY EXTRA. BUT FOR YOUR PROTECTION PLEASE ENSURE THAT YOU SPEAK TO YOUR INSURER BEFORE COMMITTING YOUR GARDEN.)



Bleadon Café

This is a great time of year for those of us that love our food. We are cooking up a storm of Christmas goodies and tempting treats. It's a great time to opt for a full English breakfast to start your weekend right. We have a few announcements. Firstly, we have a new phone number—814339. We are not going to open therefore our opening times will be 9-3 Monday to Saturday.

We hope you
Have a wonderful
Christmas and
Wish you great
Things for
2019!!

25th November is our Bleadon
Café, Christmas bonanza

10:30-4

Lots of homemade crafts gifts
and hampers—pop in (coffee
and cake can be purchased)

PUTTING BLEADON ON THE MAP



Soon after they took over Bleadon Post Office in 1987 Glenise and Les Masters found that almost every day drivers came in asking for directions. The drivers' regular complaint was that the local A-Z street map did not reach Bleadon. The obvious answer was to create Bleadon's own map.

Step forward Peter Lindsay, a resident of Birch Avenue who was an accomplished draughtsman and a keen walker. He drew two maps on different scales, one showing the central part in detail, the other covering a wider area including Bleadon Hill and Oldmixon, which were quite often the destinations the drivers were looking for and had both printed on opposite sides of a single sheet of paper. The maps were then sold in the shop, with the proceeds going to the Coronation Hall. They proved very popular with a wide range of people.

As development took place, such as Bleadon Mill in 1994, the map was updated and reprinted. Through several changes in ownership and location of the post office the maps

have continued to be on sale and the latest revision was in 2016. With all the comings and goings in the village over such a long period it is likely that many residents are unaware that the maps exist. They are well worth having. They show every road in and around the village, plus the route of all the public footpaths, of which there are many. For £1 they are a bargain, and remember that the £1 goes to a charity.

THE HALLS ARE DECKED

Health and Safety would no doubt rule out boughs of holly, but other than that the Coronation Halls have as usual been decked for Christmas, so it is up to us all to be jolly. The volunteers who put up the decorations always set a good example, as when they take them down in January. This does seem a good time to gently point out to the many users of the halls that this community facility mainly depends on the efforts of local people who feel it is a worthwhile institution to support.

Apart from the decorations, users of both halls will have noticed new fire exit doors and discovered that they are far easier to use than the old ones, which could be opened without difficulty but were a devil to close. Another new, less noticeable, feature is the water boiler in the main kitchen. The old one, installed in 2003, unsurprisingly, gave up the ghost so we asked Bruce, the MD of Ian Dance Services, to obtain and fit the updated model from the manufacturer. We have kettles as back-up and fortunately there were no events requiring large amounts of hot water during the ten days we were without a boiler.

The problem with the boiler had been reported by Bill Blacklock, who has taken on the newly created role of hall supervisor. He makes regular and frequent checks on the building, deals with the small problems and reports on the bigger ones, complementing the work of Kate James, who manages the bookings. Together, they do what could no longer be managed by one person because the halls are so heavily used nowadays, and I think both were surprised to discover how much goes on.

All in all, I feel the good people who set up the committee eighty years ago would approve of what the present generation are achieving.

HUNDREDS, TENS AND UNITS. THINK BEFORE YOU DRINK?

Back in September the TV presenter Adrian Chiles made the news because it turned out he was drinking 100 units a week. This is obviously way above the recommended limits, but most people could not say exactly how much pure alcohol that amounts to, though the answer is very simple: $100 \times 10\text{ml} = 1000\text{ml} =$ a litre. A standard bottle of scotch contains 280ml of alcohol, so if that were his tipple it would be the equivalent of 3.57 bottles a week. I believe he preferred beer or lager, meaning he drank roughly seven pints per day at average strength.

When the Government introduced the term "unit of alcohol" in 1987 it gave as rough guidelines half a pint of beer, a small glass of wine and a single measure of spirits. With beer and spirits there has been no significant change, but for wine-drinkers it is another matter. A small glass means 125ml, but most establishments no longer offer this size. The strength assumed was 8% (as in Liebfraumilch, say), but most wines are now 12% or more. A standard glass now (175ml) contains 2.1 or more units. For cider drinkers the variation is greatest, with strengths ranging from about 4% to over 8%.

All that gives readers enough information to enable them to calculate their alcohol consumption (if any), but far be it from me to preach on the subject. I will venture an opinion, however. In my time in Bleadon I have personally known at least seven people who have died of drink -all below pension age. There can be no better illustration of the truism that you can have too much of a good thing. My policy is "a little and often", and there are plenty of witnesses to the "often".

Enjoy your Christmas drinking, especially if it is with me.

Les Masters

Fireworks; making sure they are fun for all the family, four legs and all



Please call us on 01934 712229 for more details!



Proud to be independent, vet owned and operated.

Still offering our clients our own 24hour Out of Hours Service.



<u>Blackford</u>	<u>Cheddar</u>	<u>Wells</u>	<u>Woolavington</u>	<u>Bleadon</u>
Redmans Hill,	Saxon Court,	23 St Cuthbert's	Martlands Farm	Purn House Farm
Blackford,	Cheddar,	Wells,	Woolavington	Bleadon
BS28 4NG	BS27 3NA	BA3 2AW	TA7 8ED	BS24 0QE
01934 712229	01934 741292	01749 670966	01278 686971	01934 814156

The festive season is fast approaching! And with it comes all sorts of fun and excitement; Christmas decorations, presents, festive cheer and ringing in the new year with a firework display maybe? At Axe Valley we know fireworks are fun but also that a lot of our four legged family members may not share our enthusiasm, or even find them completely traumatic. We are regularly asked by concerned mums and dads about how to make the fireworks season less stressful for their fur babies and there is a lot that can be done at home to help.

For the coming season, making your pet feel warm, cosy and safe at home can help manage stress. Creating a comforting space for them to find sanctuary in is very important; somewhere nice and dark, covered and out of the way with as little noise from outside as possible, while using sounds from the tv or radio to mask scary noises. Medically, we can provide calming pheromones and natural stress relieving tablets for dogs and cats. For severely affected dogs there is a prescription only medicine available.

Come and talk to us at any of our branches for more detailed behaviour advice or medical options to keep your pet safe and stress-free so we can all enjoy the celebrations together.

Hello Bleadon Residents from your Local Neighbourhood Policing Team.

We are a small team of two PCSO's who work across the local villages and are committed to making our communities feel safe and be safe. We aim to cater to the individual needs of our villages and work with our Local Residents, Parish Councillors and Community Groups to find out what works best for YOU and what you would like from US!

In a 3 month period the average amount of calls received from the Parish is 19, with only 10 being received in October, only two of which were crimes being reported. This makes Bleadon one of our lowest demand locations due to the low levels of crime and anti-social behaviour.

However...

We are still here to engage with our communities and residents in Bleadon and provide a presence in the village to deter rural crime and anti-social behaviour.

As part of our role as PCSO's we attend Parish Council Meetings, Community Groups and engage with Neighbourhood Watch Schemes. We are also available to give help and advice on a range of community issues and provide reassurance and crime prevention advice to anyone who has been a victim of crime or vulnerable to crime. We also encourage local residents with stables and farmyards to sign up to Farm Watch and Horse Watch.

We welcome any opportunity to get to know the local residents living on our Beat in Bleadon! So if you would us to attend any local groups or clubs (whether it be to say 'Hello' or provide a talk on a specific topic) or if you would like information on Horse & Farm watch or think you or a neighbour could benefit from a visit and crime prevention advice from your local Beat Team then please get in touch!

We can be contacted either by 101 or visiting our website at www.avonandsomerset.police.uk and clicking on the "Your Area" tab and typing in your postcode.

We look forward to hearing from you and getting to know our Beat even more!

We will also be attending the Bleadon Village Christmas Market on 1st December so make sure to pop down and say Hello!

From your Local Neighbourhood Policing Team,

PCSO Aisha Mitchell and PCSO Kayley ANDERSON

Have you ever wondered about the who, what, why, where, when and how of **BleadonBOB** at www.bleadon.org.uk ?



Bob McKay was the original creator of a community website for Bleadon early in 2000 and it was the first and only website for Bleadon at the time. Following his untimely death in 2006 his wife gave us the opportunity to take on the domain name. So, when it came to giving the website a new name after a redesign we thought BleadonBOB should be used as a homage to Bob McKay, as well as standing for Butler's Online Bleadon.

We developed upon his early work and expanded the functionality for the benefit of all residents, providing an independent online community website serving Bleadon village, parish and beyond. The site now gives access to interactive blogs as well as local and national information and resources, and linked social media.

The BOB website also enables the community to advertise their events, activities, products and news as well as being a resource to locate and contact local organisations, groups, societies and businesses. There is information relating to the village market,

Neighbourhood Watch, properties and items for sale, local travel, road works, links to North Somerset services, and much, much, more. BOB also works online with local residents and action groups raising awareness of local democracy, and relaying information regarding political hot-topics such as major planning applications like the proposed Bridge Road, Devil's Bridge, Wentwood Drive & Bleadon Hill housing developments, the Caravan Park expansion, the A370 Solar Farm & Wake Park developments; and the proposed A370 road improvements to name but a few. These have been shared with BOB and then widely publicised directly to hundreds of BOB contacts using a variety of media to help local residents connect with like minded people and comment to our government representatives accordingly.

Residents, ex-residents and visitors from the UK and abroad contact BOB for local information about tourism, accommodation, history, photos and open spaces, helping them to enjoy our great outdoors whether they are here or in the USA, Hong Kong, Australia or Singapore!

BOB pages include local Walks, our Wildlife Reserves, Public Rights of Way, Spaces and Places and other surrounding areas of outstanding natural beauty. If you are interested in our community information you can interact with BOB in a number of ways including:

- www.bleadon.org.uk/news : for people who like their community news in one place as this pulls together all the various BOB blog posts.
- social media: Facebook BleadonBOB, Twitter @Bleadon, NextDoor BleadonBOB
- news@bleadon.org.uk : to send us any information or requests and if you would like to be directly alerted to BOB website posted information via email.

Finally, thanks to all who have helped keep the Bleadon BOB website proactive for well over a decade and a warm welcome to any readers who may want to join our online community.

Chris and Jo - BleadonBOB

Shop News

Bleadon Country Stores & Post Office

POST OFFICE

Have a Wonderful Christmas from Us to You!

Post Office

The Post Office offers a wide range of Postal Services as well as Banking Facilities including Cashing Money, Balances, Cash & Cheque Deposits, Euros available on demand & other Currency at short notice.

Country Store

Our Country Store is now stocked with locally sourced goods at reasonable prices such as:

- Astills Fresh Bread, Cakes and Sandwiches
- Border Biscuits
- Jon-Thorners Pies & Quiches, +
- Fresh & Cooked Meats
- Rose-Farm Jams, Pickles & Chutneys
- Local Free-Range Eggs
- Local Cheeses & Honey
- Thatcher's Cider
- Local Beers (Cheddar Ales) & Lager
- Wines & Spirits
- Cigarettes & Tobacco

(Fresh Turkeys can be ordered for Christmas)

Bleadon Country Stores & Post Office
Purn Way,
Bleadon, BS24 0QF
Tel: 01934 815584

We are Open
Mon-Fri 7.30am to 5.30pm
Sat 8.00am to 1pm
Sun 8.30am to 12pm
(Weekend opening hours may change to suit customer needs)

We would like to pay a special tribute and say thanks to Barbara and Stan Pugh for their devoted service to us over a great number of years. After at least 15 years with the current Post Office and Shop, we would like to thank Barbara and Stan Pugh for their unstinting efforts to keep the local shop alive.

Before that Barbara worked at the previous Post Office for a number of years, and it does not go unnoticed that the team never took a day off for illness, and their friendly faces will be missed at the western end of the village—except of course, as customers! A celebration will be held at the annual Christmas shop party where they will be guests of honour!

The Shop is currently open from 8am to 1pm on Saturday and 8.30am to 12.00pm on Sunday. There has been some confusion with the Café closing on Sunday but the shop will remain open. The opening times are on the door. We are looking for someone to replace Barbara and Stan on a Sunday morning. We can offer every week or on a shared rota basis. Please pop in or call 01934 815584 if you are interested.

Most of you will have seen that we have welcomed back Heather Bowman to the shop as manageress, where she will oversee the 'make-over' of the shop with popular lines, back to how it should be! This will include more locally grown produce including a butchery selection

from a local butcher. We will be able to take orders from you for fresh Turkey and other meats at Christmas. We are currently sourcing locally made gifts that will make excellent presents for Christmas.

We are proud to announce that following an inspection by the Environmental Officer for North Somerset, the shop and post office have now been awarded a 5* rating certificate for "Food and Hygiene"

Purn House Farm also welcomes Nadia Lojko (Jaz), who starts with us this month and will be running 'Broderick's Fine Foods' from the farm, who specialise in wholesale Ice Cream and frozen foods.

We wish them all well in their new roles as the shop/PO takes on a new identity—please support it when you can!



It's a sign!

The Parish Council are going to be making decisions around the implementation of signs to warn drivers that on our rural roads they may encounter Horses and Pedestrians. These will be on Roman Road, Shiplate Road and Accom-

modation Road—as recommended by the Councillor for Footpaths. What are your thoughts? If you want to back this then be sure to write to the Council via the Parish Clerk—**make your voices heard.**



Allotments Report

A meeting was held at the beginning of November with the allotment tenants to discuss improvements.

The second week of November arrangements have been made for a contractor to remove the mountainous compost heap from the North East corner. Thus making more room for vehicle turning and also a more controlled area for composting allotment vegetation.

At the time of writing we have 4 full size plots and 4 half plots available. The rent is £17.00 per plot per year and £8.50 per half plot.

Other works on the plots will be that

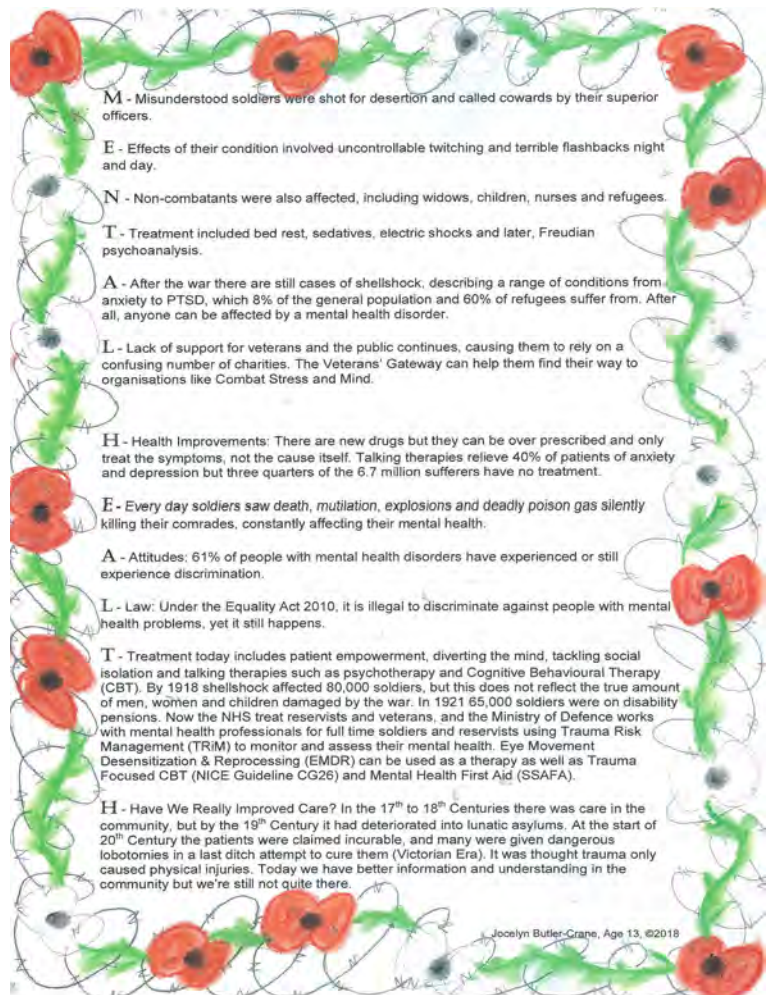
- ◆ The plots to be marked (numbered).
- ◆ The Vacant plots are to be cleared and a skip hired to remove any metal or glass left.
- ◆ A new fence is to be erected along the footpath edge of post and stake fencing with 1 meter gaps between plots. The cost of this is £480.
- ◆ Tree works along the southern side are also to be undertaken.

It was suggested that part of plot 2 (lower) be used for vehicle parking/turning and if funds allow to replace the existing gate hanging post.

Mr Paul Thorne volunteered to be co-ordinator so that any problems should be addressed to him and he in turn can contact the Parish Clerk.

Good luck and Good Gardening

Mary Sheppard



AN AMATEUR PRODUCTION BY ARRANGEMENT WITH SAMUEL FRENCH

BLEADON PLAYERS PRESENTS

CINDERELLA

- THE TRUE STORY -

BY DAVID TRISTRAM DIRECTED BY TIM CLARKE

"Soft lights, romantic music,
all the trimmings!
It can't possibly fail!"

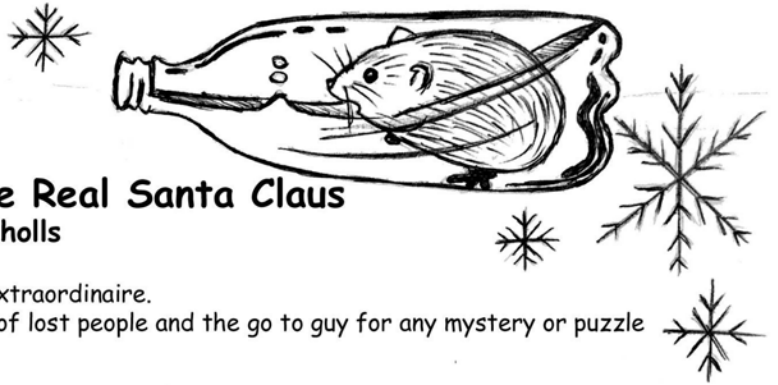
£8 PER ADULT*
£4 PER CHILD*

CORONATION HALL, BLEADON

24TH - 26TH JANUARY 2019

*BOOKING FEE APPLIES ONLINE

WWW.BLEADON-PLAYERS.CO.UK



Angus Management and the Real Santa Claus

By Kirsten Hemingway and Lilly Nicholls

Angus Management is an Animal Detective extraordinaire. He is the finder of lost socks, the guardian of lost people and the go to guy for any mystery or puzzle on Hellenge Hill.

December is a beautiful and peaceful month on Hellenge Hill, the leaves have landed on the ground and the morning mists dress the levels in a blanket of cloud. Birds fly in and out of the mist like fish jumping in and out of the sea.

Angus and Foxy were getting ready for the Bleadon Christmas Party. All the children would be attending and looking forward to seeing Santa. Every year Angus dressed as Santa Claus and this year was no exception. Angus didn't like standing in for Santa but he always drew the short straw and got picked. As usual he was a little bit grumpy.

"Why can't Santa do it himself" he moaned "I'm beginning to think he doesn't exist".

"Foxy crossed her arms "Angus that will do, you know full well that every village chooses a Santa because the only time the real Santa is magic is Christmas Eve. Until then he needs our help to tell his story to the children so that they can be ready. Now, stop being grumpy and get in to the suit!"

Angus pulled on the suit. It was tighter than last year. Foxy smiled and angus harrumphed. He stormed out across the fields towards South Hill where the party was in full swing.

Just as he reached the woods behind the farm he met Jesse the water vole in a terrible state - "Angus, thank goodness I found you, I need your help and its an emergency."

Angus and Jesse ran towards the rhyne, and there in a plastic bottle floated a tiny water shrew. He peered out of the bottle looking terrified as it bobbed and floated along the rhyne getting caught in this plant and that. On the bank the other water voles were tying grass together to make a rope but water was going in to the neck of the bottle and the little water shrew was running out of time.

Angus ripped off the Santa suit and took to the air. The water voles looked up and gasped as Angus dived in to the Rhyne and grabbed the bottle. He flew to the ledge that the water voles were standing on and gently dropped the bottle.

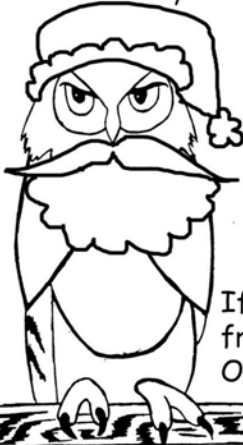
The little water shrew squeezed herself in to the neck of the bottle and Jesse grabbed her hands and pulled her out. "Pop!" They tumbled in to the other water voles.

"Thank you, thank you, so much," she smiled and cried with relief. Jesse put his arms around her, "I am so pleased that you are ok," he said

"My name is Amanda, I can swim but if the bottle took me down I would have drowned, and, and ..."

"And lucky for you," interrupted Angus "Jesse was on the case and I made it here in plenty of time."

Jesse looked and Angus "oh no, time Angus, quick, get your suit back on and let's go or you will miss being Santa!" - they headed off quickly back to through the quarry to South Hill.



All the water voles and Amanda the water shrew ran with Angus in a long trail, they rounded the corner and watched as a man in a Santa suit smiling and laughing waved goodbye to the children and jumped on his sleigh. Angus looked in to the big white bearded face and Santa smiled - "thanks Angus, I got it this year."

Foxy rounded the corner and hugged Angus "you were the best Santa ever this year", the water voles smiled at Angus and the world around them faded away ...

If you enjoyed this short story then we welcome you to join Angus and all his friends on their adventures around Hellenge Hill. Angus Management Series One is available for sale now at the Local Shop and Cafe.



WITH BROADBAND FROM
TRUESPEED
EVERYTHING
IS POSSIBLE

GET THE BROADBAND YOU DESERVE
REGISTER ONLINE TODAY

www.truespeed.com

OR CALL US ON 01225 962 555

TRUESPEED | TRULY BETTER
BROADBAND



01934 815053

www.davidplaister.co.uk