

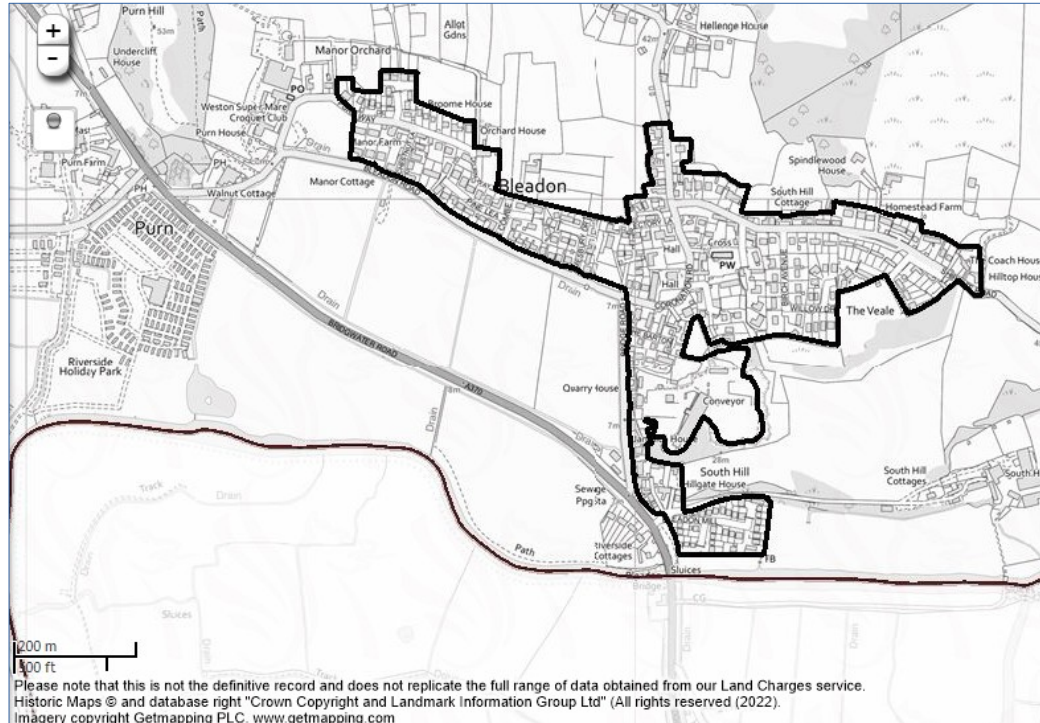
CONSULTATION MARCH 2022

**NORTH SOMERSET LOCAL PLAN 2038
CONSULTATION DRAFT**

Preferred Options

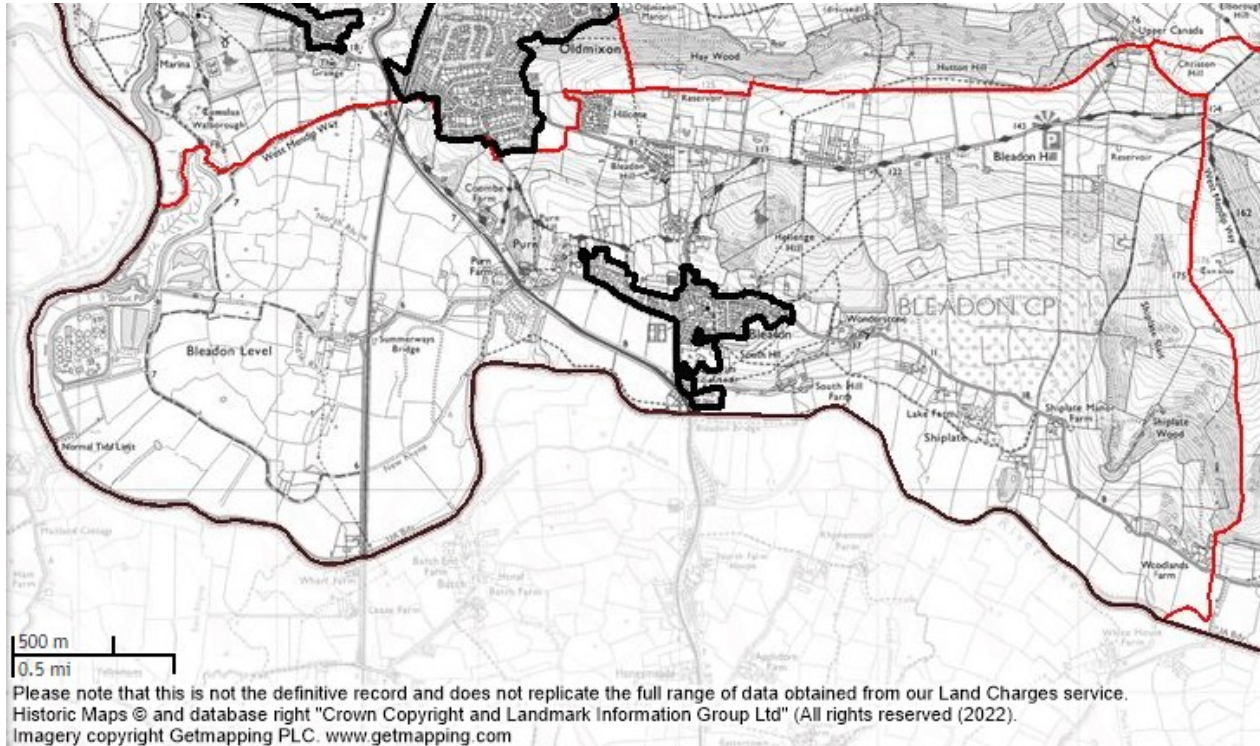


Bleadon Village



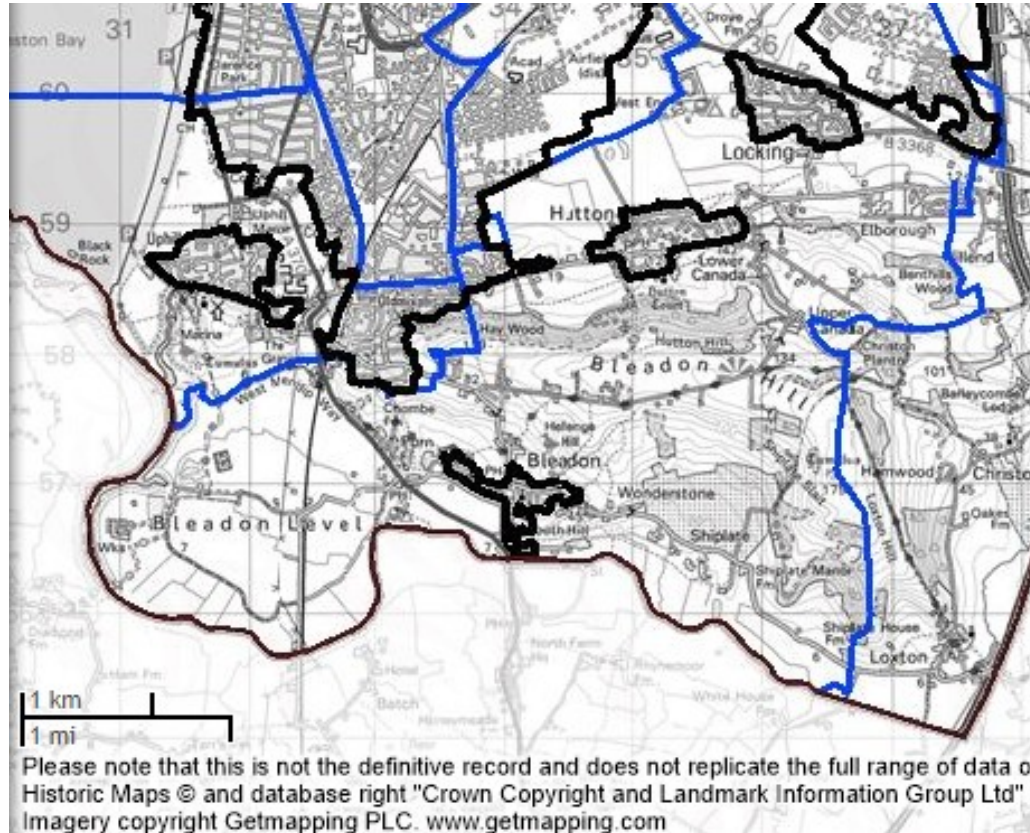
The Agenda today states: *“To consider the potential impact on the **village** of Bleadon from the North Somerset Local Consultation Draft Plan and its preferred options 2038”*

Bleadon Parish

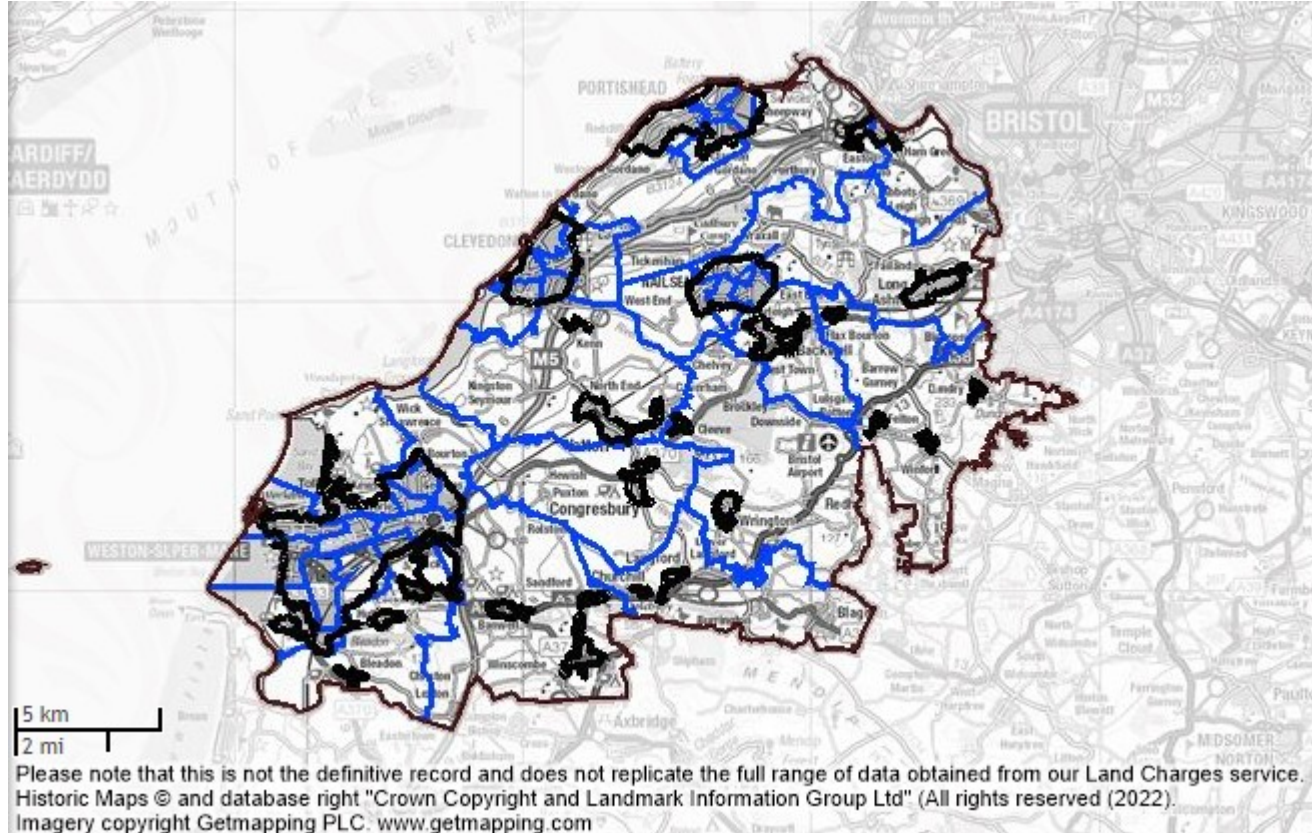


Bleadon Parish is so much bigger and more diverse than just its urban village!

(Bleadon) Hutton & Locking Ward



North Somerset Unitary Authority



JSP & WECA & Duty to Cooperate



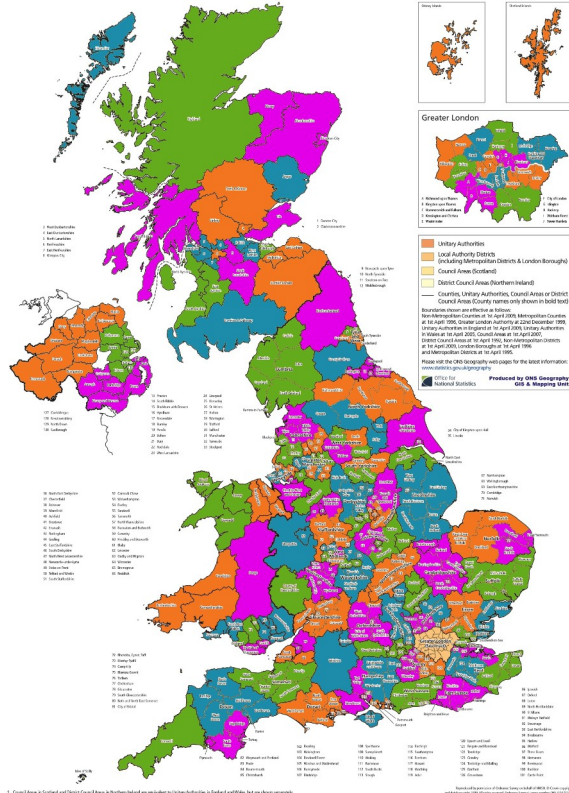
Joint Spatial Plan on BOB



<https://www.westofengland-ca.gov.uk/>

National Perspective

United Kingdom: Local Authority Districts, Counties and Unitary Authorities,¹ 2009



England – there are 333 councils in England:

- 24 County Councils (upper-tier)
- 181 District Councils (lower-tier)
- 32 London Boroughs (unitary)
- 36 Metropolitan Boroughs (unitary)
- 58 Unitary authorities (unitary)
- 2 Sui Generis authorities – City of London Corporation and Isles of Scilly (unitary)

Wales – 22 Unitary authorities

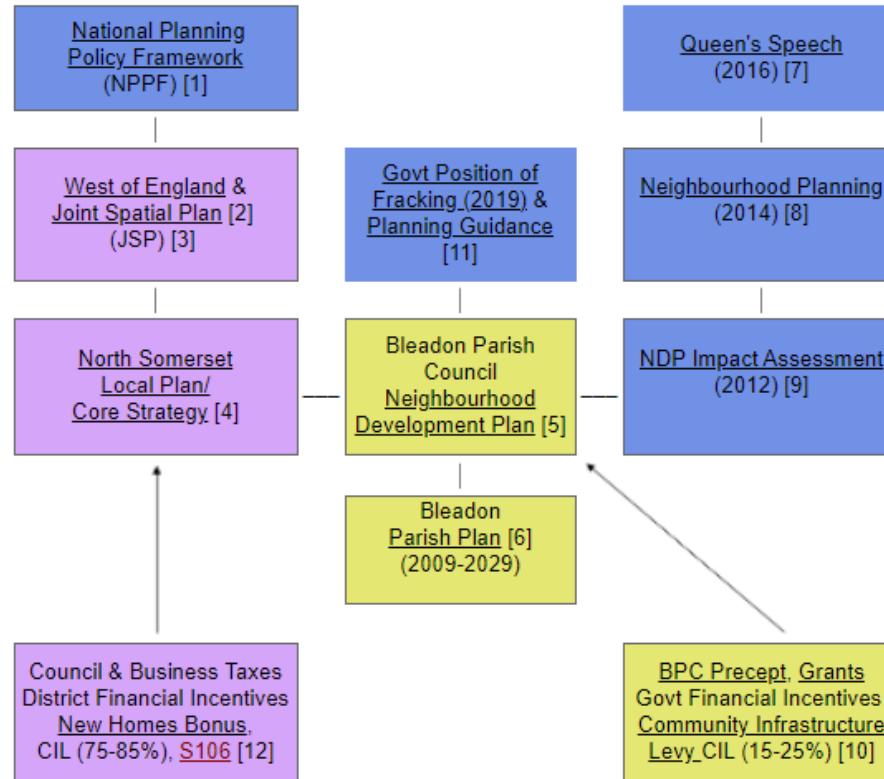
Scotland – 32 Unitary authorities

Northern Ireland – 11 Unitary authorities

There are around 11,930 [local councils in the UK, including town, parish, community, neighbourhood and village councils.](#)

Planning Policy Overview

BOB Info








Consultations & BPC Statutory Consultee

List extract on BOB



BOB endeavours to keep consultations and public meetings up-to-date but is dependent on Bleadon Parish Council, North Somerset Council, residents, etc. to keep us informed in time for people to respond.

2022					
	Consultation	Opens	Closes	Information	Blog
	North Somerset Local Plan 2038 Preferred Options	14 Mar 22	29 Apr 22	"The draft Local Plan sets out the councils preferred options for delivering the number of new homes and associated infrastructure such as schools, transport and other facilities that are needed in North Somerset up to 2038"	Blog
2021					
	Consultation	Opens	Closes	Information	Blog
	Parking Standards Consultation	17 May 21	28 Jun 21	"... update the existing Parking Standards Supplementary Planning Document (SPD)"	Blog
	Baker St Travel Improvements	12 May 21	03 Jun 21	"... proposed changes to Baker Street and Milton Road are intended to give more space to people using the streets"	Blog
	NSC Supplementary Planning Document (SPD)	26 Apr 21	21 July 21	"Any person with sufficient interest in the decision to adopt the SPD may apply to the High Court for permission to apply for judicial review of that decision."	Blog
	Winterstoke Hundred Academy Expansion	31 Mar 21	05 May 21	"North Somerset Council would like your feedback on plans for a 900 school-place expansion of Winterstoke Hundred Academy to be located in Parklands Village."	Blog

Related Info on BOB



NSC Local Plan Consultation

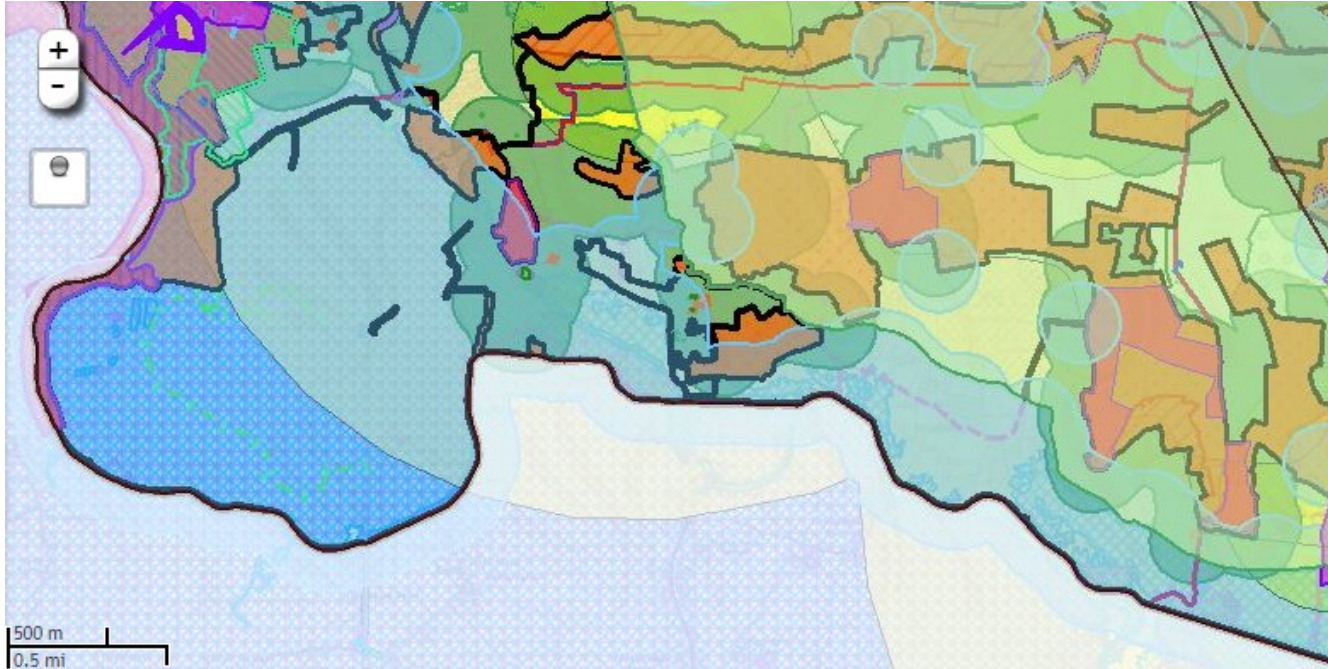
Local Plan Mapping and Local Plan Consultation

The local plan timetable is as follows:

Consultation on Preferred Options (Consultation Draft)	March/April 2022
Consultation on pre-submission plan	November 2022
Submission to Secretary of State	January 2023
Examination	April 2023
Inspector's Report	October 2023
Adoption	December 2023

Bleadon Parish Characteristics

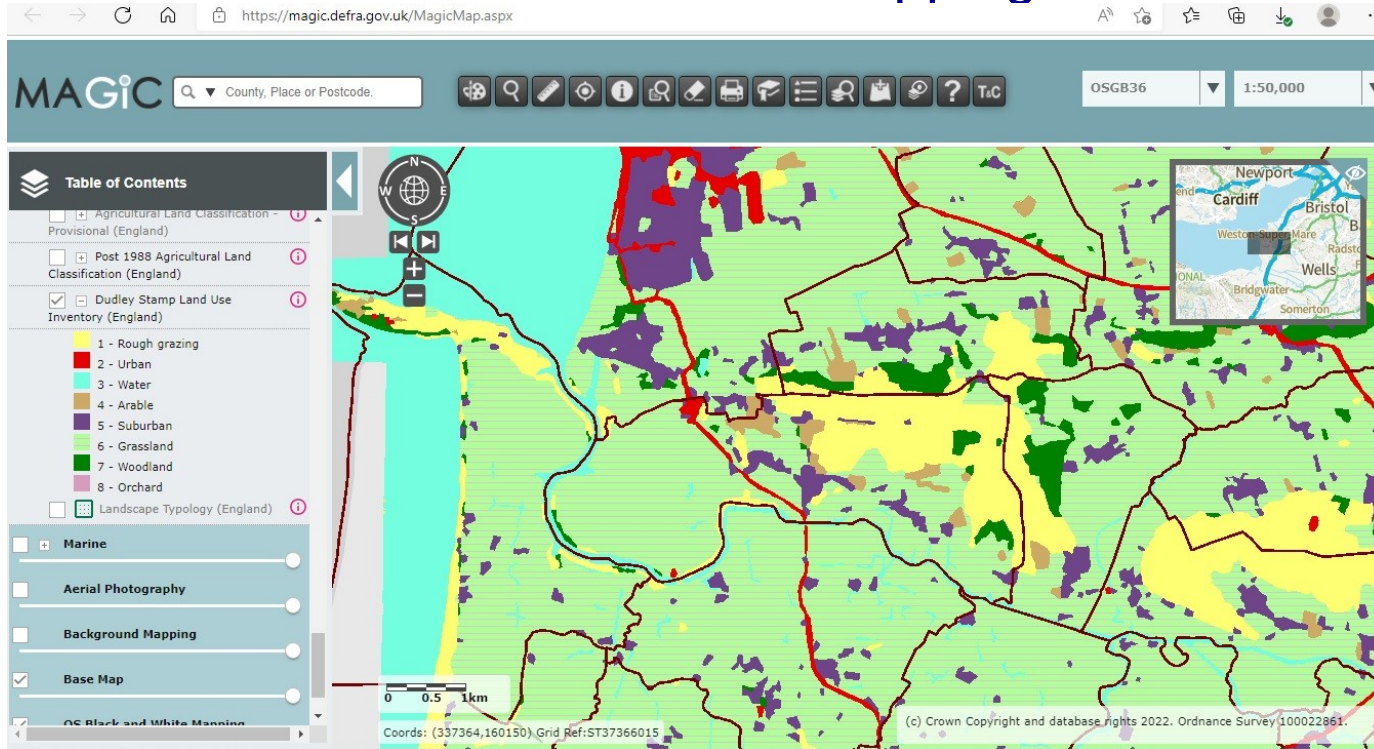
Local Plan Mapping and Natural England and DEFRA and [NSC Planning System](#)



The parish contains SSSIs, SNCIs, AONB, wildlife reserves, bat zones, special protection area, wildlife sites, woodland stock, Environment Agency Source Protection area, TPOs, Natural England Ancient Woodland, listed buildings, common land village greens and many fields are used for all forms of agriculture.

Dudley Stamp Land Use

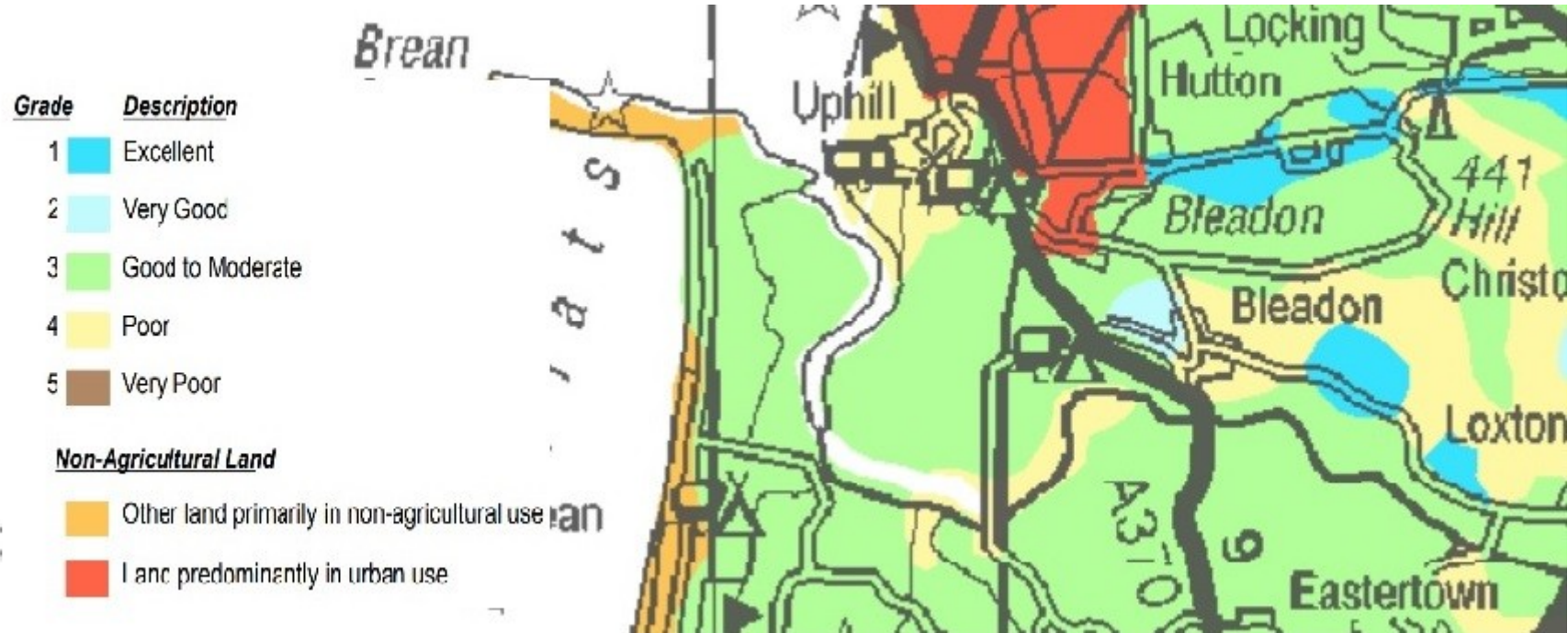
DEFRA Interactive Mapping



According to the Dudley Stamp Land Use Bleadon appears to be mainly grassland, followed by rough grazing, suburban and arable land

Bleadon Parish Agricultural Land Classifications

Full area map



Any 'poor' land can be improved within a season with the right land management, ensuring continued community food security.

Food Security

Farmers Protection Dropped Blog and Food Security Strategy



Govt 2021 - *"In meat, milk, and eggs, the UK produces a roughly equivalent volume to what it consumes."*

"The UK produces a significant proportion of the other domestic crops it needs, including 54% of fresh vegetables, 67% of sugar beet, 71% of potatoes, and 79% of oilseeds, though only 16% of fresh fruit"

North Somerset Council Local Plan Consultation Mapping

Local Plan Mapping and Local Plan Consultation

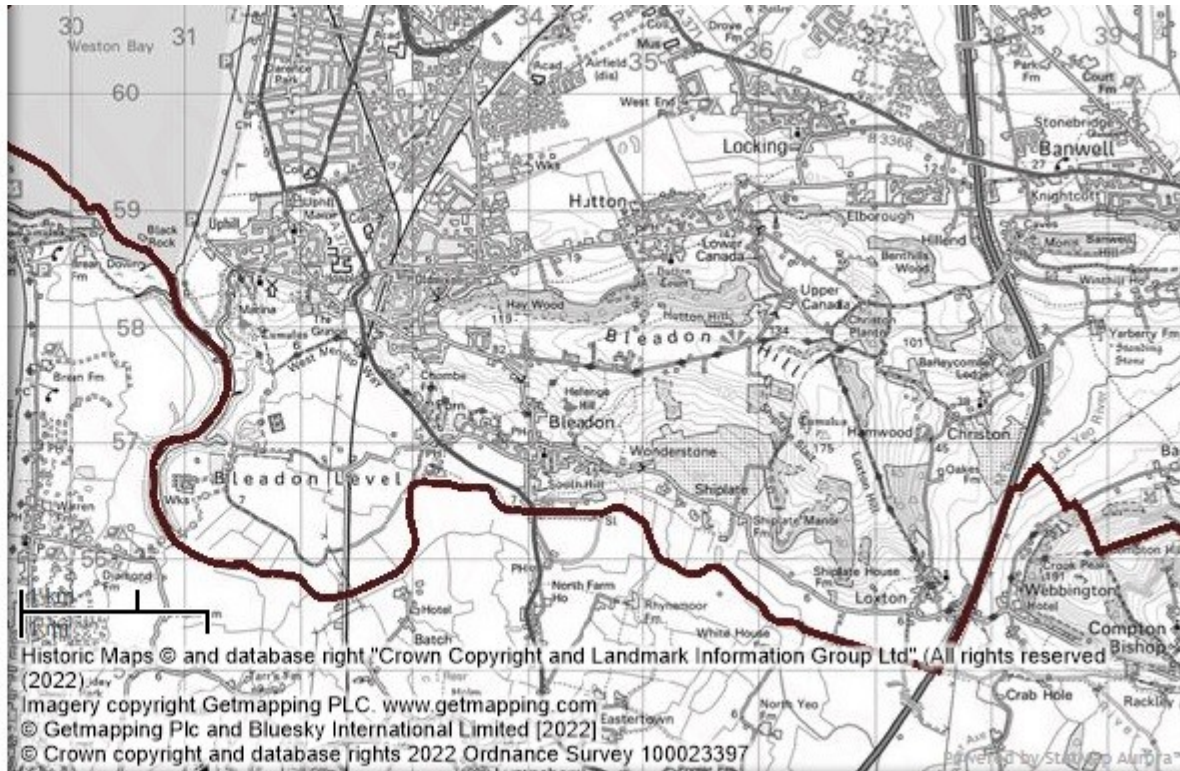
Map legend

- Local Plan 2038 - Settlement Boundaries
- Local Plan 2038 - Proposed Residential Sites
- Local Plan 2038 - Proposed Employment Sites
- Local Plan 2038 - Community Facilities
- Local Plan 2038 - Strategic Gaps
- Local Plan 2038 - Transport
- Local Plan 2038 - Retail
- Local Plan 2038 - Local Green Space
- Local Plan 2038 - Air Travel and Safety
- Local Plan 2038 - Minerals
- Local Plan 2038 - Green Belt
- Local Plan 2038 - Renewable Search Areas

Minerals

Local Plan Mapping and Local Plan Consultation

- Local Plan 2038 - Air Travel and Safety
 - Airport related development
 - Air safety
 - Individual Risk Contour
 - Public Safety Zone
- Local Plan 2038 - Minerals
 - Minerals Safeguarding Area - Limestone
 - Preferred area for minerals working
 - Area of search for minerals working
- Local Plan 2038 - Green Belt
 - Proposed new Green Belt
 - Green Belt
- Local Plan 2038 - Renewable Search Areas
 - 2500kW Wind Turbine potential search area
 - 1000kW Wind Turbine potential search area
 - 500kW Wind Turbine potential search area
 - Solar PV potential search area



Bleadon 'Fracking' Licences

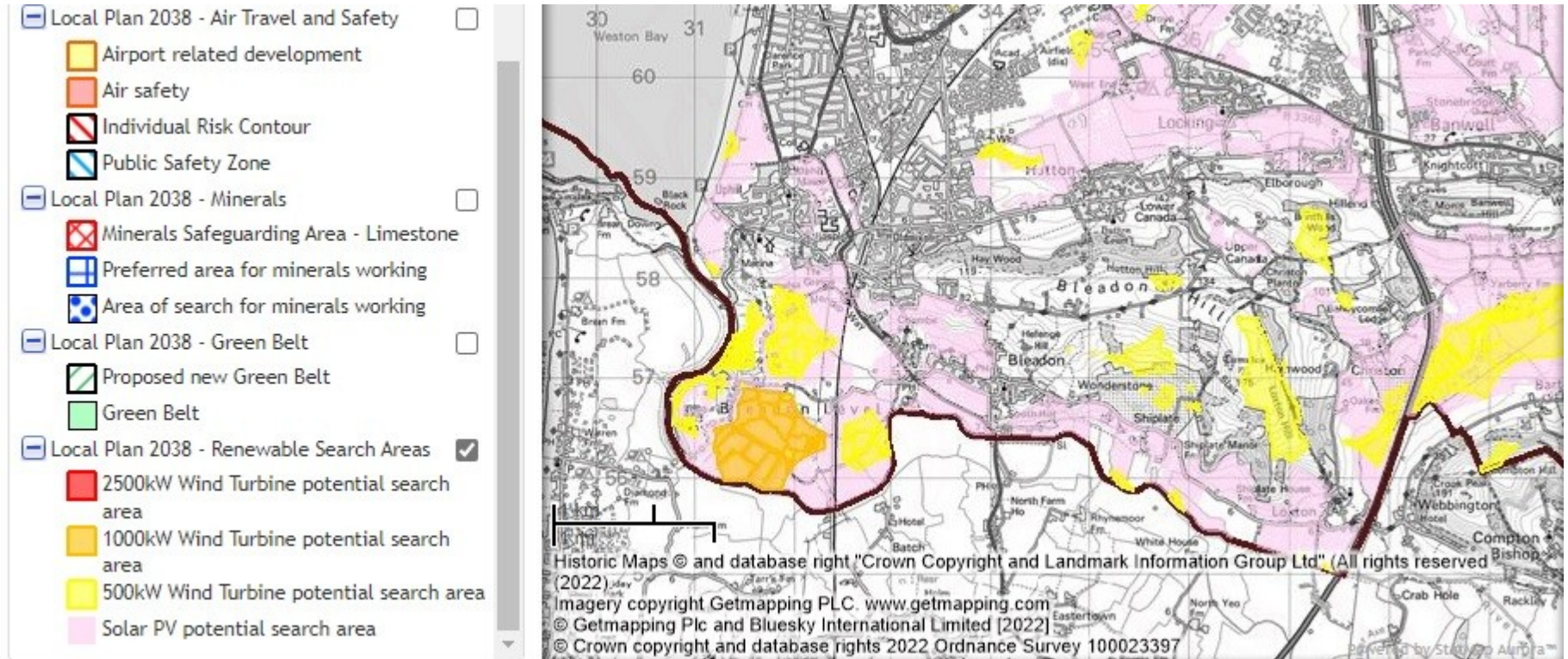
<https://www.bleadon.org.uk/fracking.html>



Currently under a Government moratorium

Renewable Search Areas

Local Plan Mapping and Local Plan Consultation



Page 49 of the consultation states, "Proposals for wind turbines and solar photovoltaic arrays will be **supported in principle** within the Search Areas shown ... and the proposed site is **not within (land) grades 1, 2 or 3a**"

NSC Local Plan & Food Security

Local Plan Mapping and Local Plan Consultation

Page 45 of the consultation states: "**Protect spaces for local food production**, including allotments, community orchards, community gardens and identify opportunities for community composting ... A demonstration of adaptation measures, which improve the resilience of communities, reduce inequality, and bring a range of social benefits is required...Climate change adaptation statements will set out the measures to increase the resilience of that development to climate change. Changes will include... reduced soil condition with consequential impacts on food production"

Page 74 of the consultation states: "The National Planning Policy Guidance (NPPG) states that **GI [Green Infrastructure] is a natural capital asset providing multiple benefits including ... food ... production**, urban cooling ... (Natural environment section paragraph 005)."

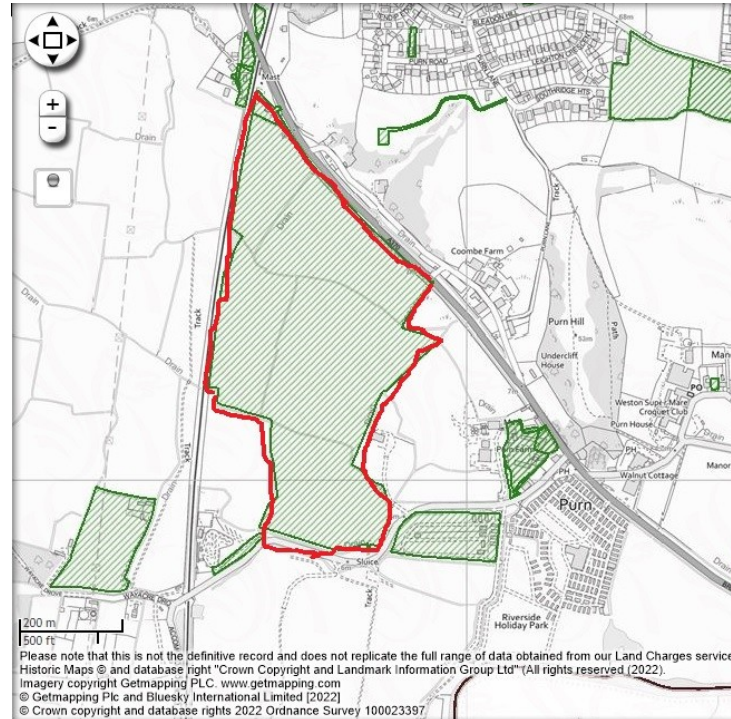
Page 93 "Provides **internal and external communal space** as appropriate, including space that **gives residents the ability to grow plants and food.**"

BUT Page 101 of the consultation states: "Farmers are encouraged to diversify their activities and supplement their income from **enterprises other than normal food production**" – what does this mean?

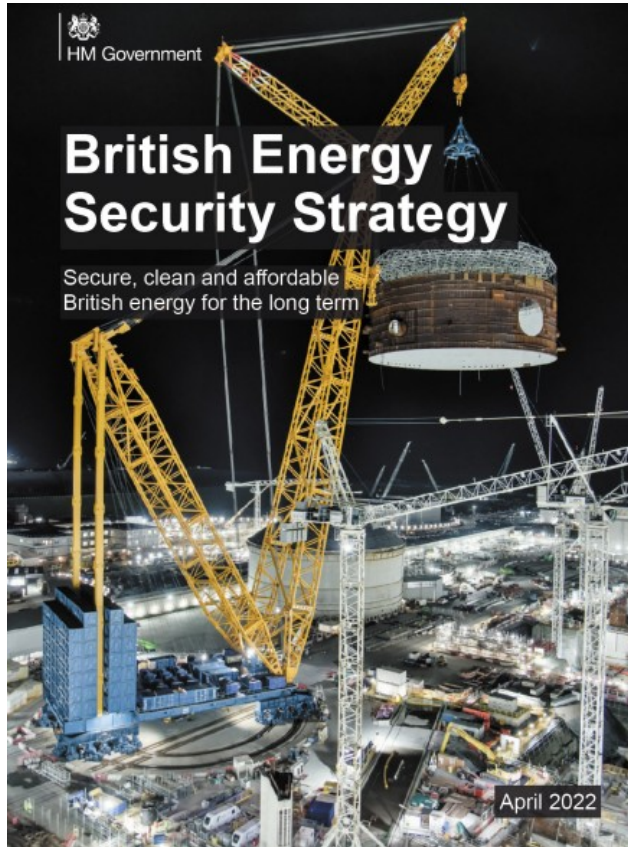


32K Solar Panels over 5 Bleadon Fields (2013)

Local Plan Mapping and Local Plan Consultation and [NSC Planning System](#) and [Solar Farm Blog](#)



Govt increasing Nuclear Power from 15% to 25% Electricity by 2050

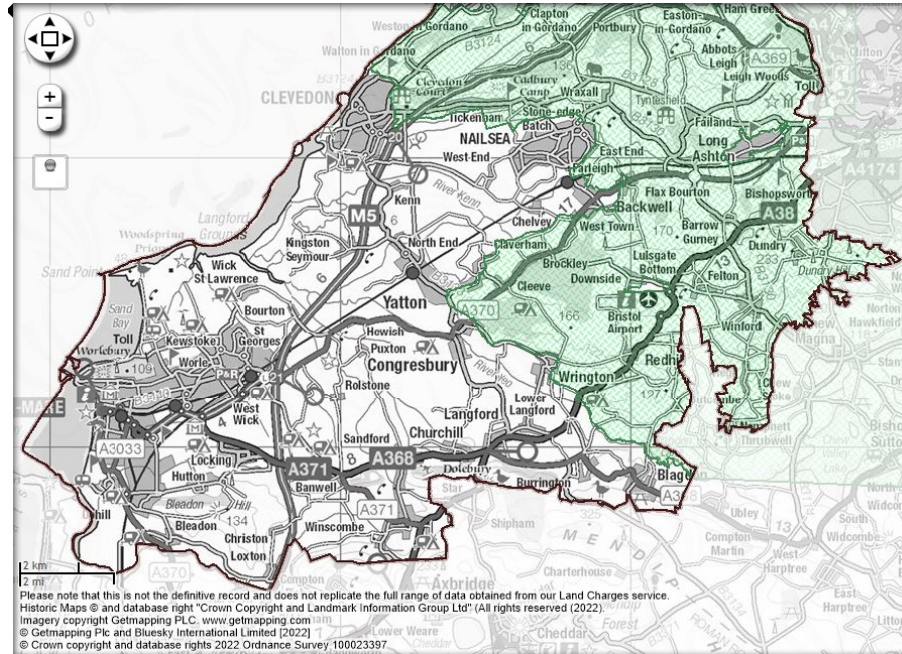


This month it was **stated** that the UK's, "... *new Energy Security Strategy to supercharge cheap renewables and new nuclear, while continuing support our North Sea oil and gas industry.*"

*The **Energy Strategy** states, "Nuclear is the only form of reliable, low carbon electricity generation which has been proven at scale and returns more than a hundred times as much power as a solar site of the same size. We can only secure a big enough baseload of reliable power for our island by drawing on nuclear."* **Prime Minister**

Green Belt

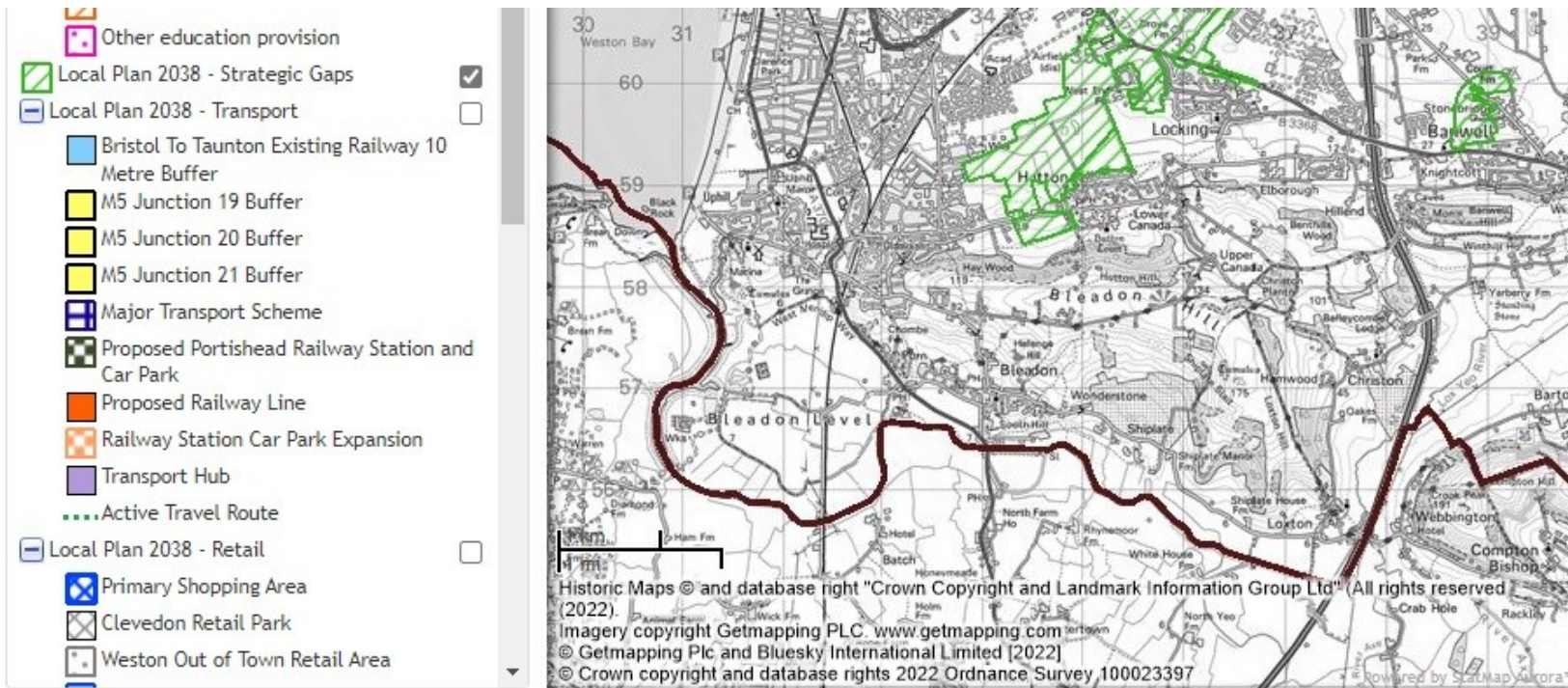
Local Plan Mapping and Local Plan Consultation



The consultation states, *“The Green Belt in North Somerset will continue to check the unrestricted urban sprawl of Bristol, preserve the openness of land and meet the national purposes of Green Belt. It will protect rural settlements maintaining their character and separate identities”*

Strategic Gaps

Local Plan Mapping and Local Plan Consultation

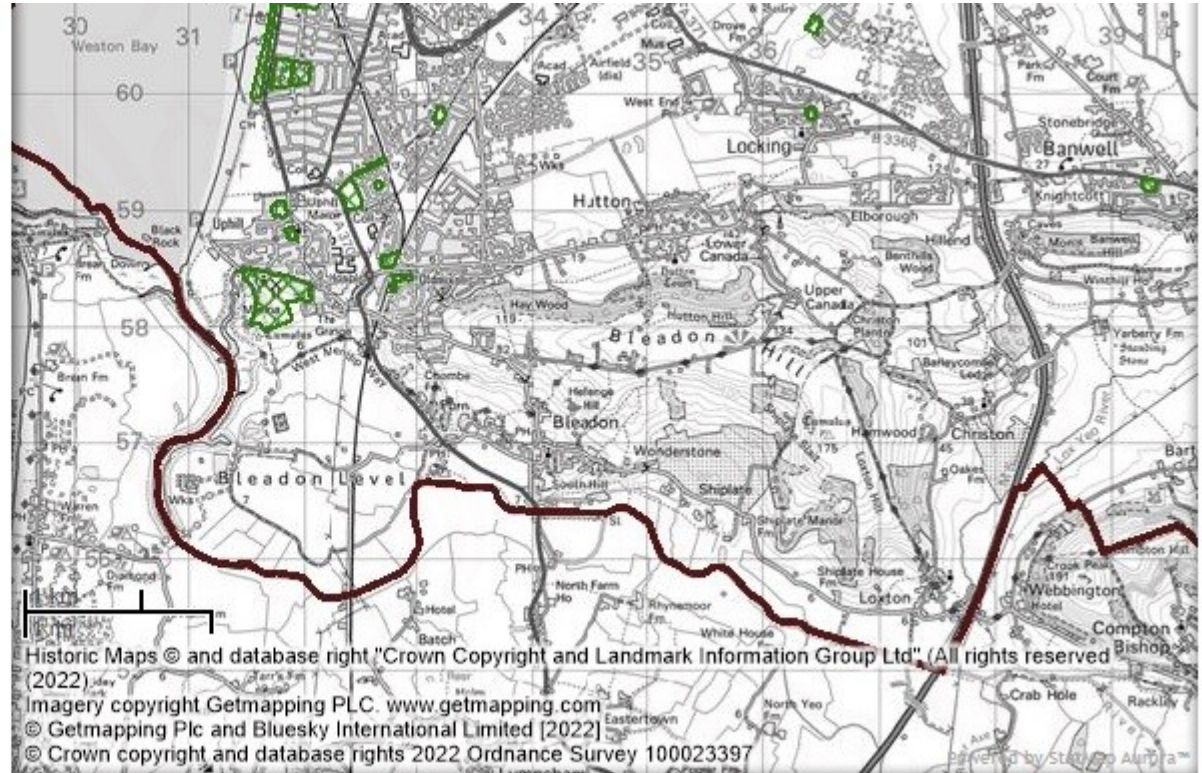


NSC consultation states, “Strategic gaps have a broad similarity to some of the purposes of Green Belts in that they can help prevent the merging of settlements, assist in safeguarding the countryside from ‘encroachment’ regarding land between the settlements, and help to protect the setting and character of settlements...” **Why not create one for Bleadon?**

Local Green Space

Local Plan Mapping and Local Plan Consultation

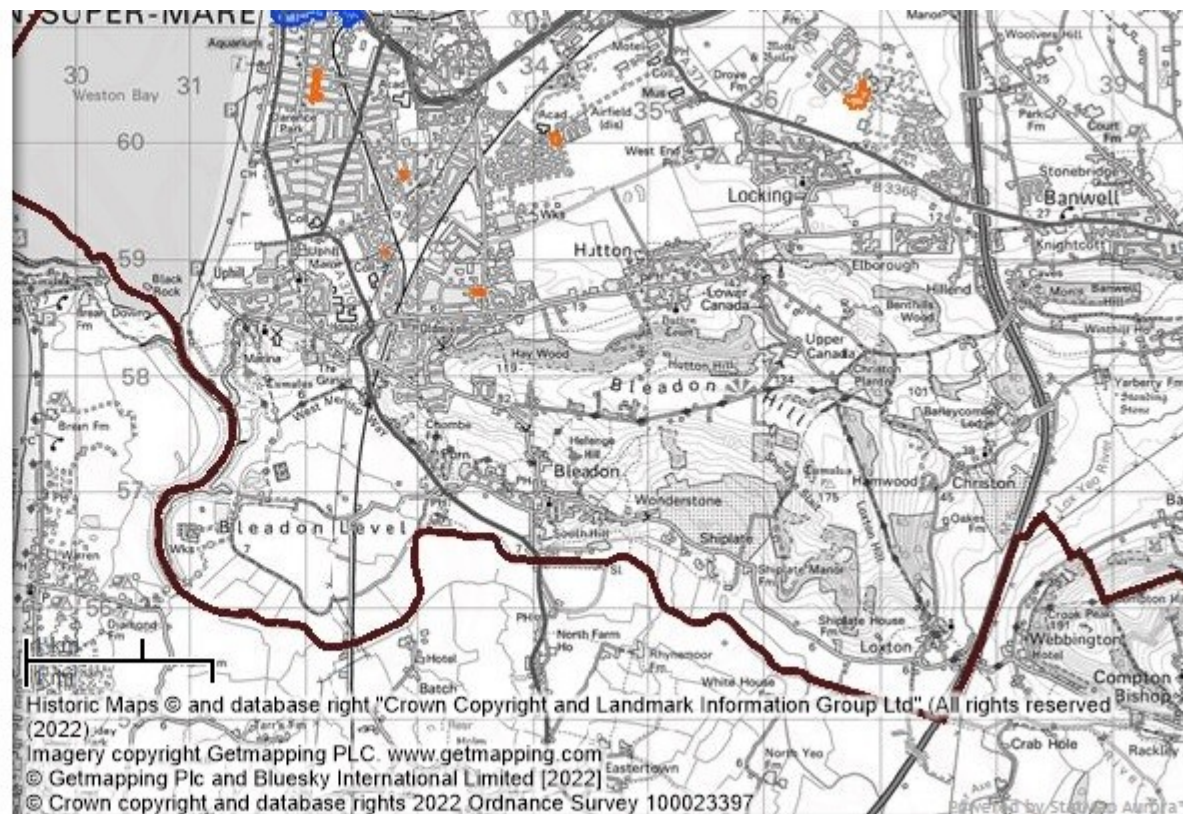
- Active Travel Route
- Local Plan 2038 - Retail
 - Primary Shopping Area
 - Clevedon Retail Park
 - Weston Out of Town Retail Area
 - Town Centre
 - District Centre
 - Local Centre
- Local Plan 2038 - Local Green Space
- Local Plan 2038 - Air Travel and Safety
 - Airport related development
 - Air safety
 - Individual Risk Contour
 - Public Safety Zone
- Local Plan 2038 - Minerals
 - Minerals Safeguarding Area - Limestone
 - Preferred area for minerals working
 - Area of search for minerals working
- Local Plan 2038 - Green Belt



Retail

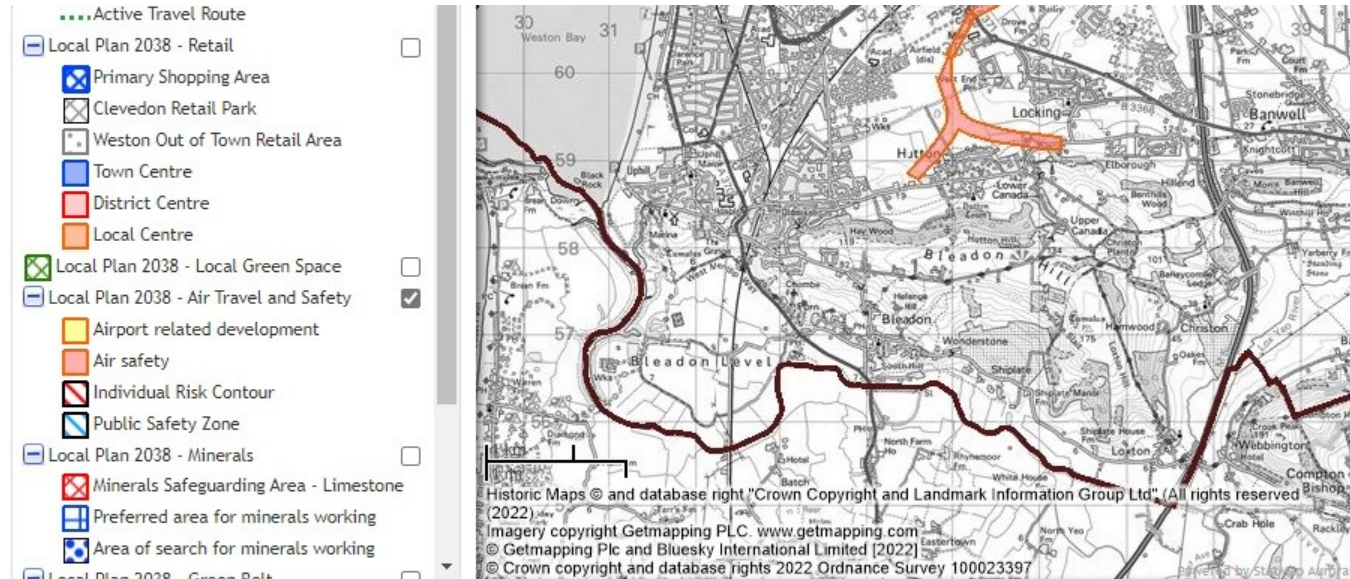
Local Plan Mapping and Local Plan Consultation

- Transport Hub
- Active Travel Route
- Local Plan 2038 - Retail
 - Primary Shopping Area
 - Clevedon Retail Park
 - Weston Out of Town Retail Area
 - Town Centre
 - District Centre
 - Local Centre
- Local Plan 2038 - Local Green Space
- Local Plan 2038 - Air Travel and Safety
 - Airport related development
 - Air safety
 - Individual Risk Contour
 - Public Safety Zone
- Local Plan 2038 - Minerals
 - Minerals Safeguarding Area - Limestone
 - Preferred area for minerals working
 - Area of search for minerals working
- Local Plan 2038 - Green Belt



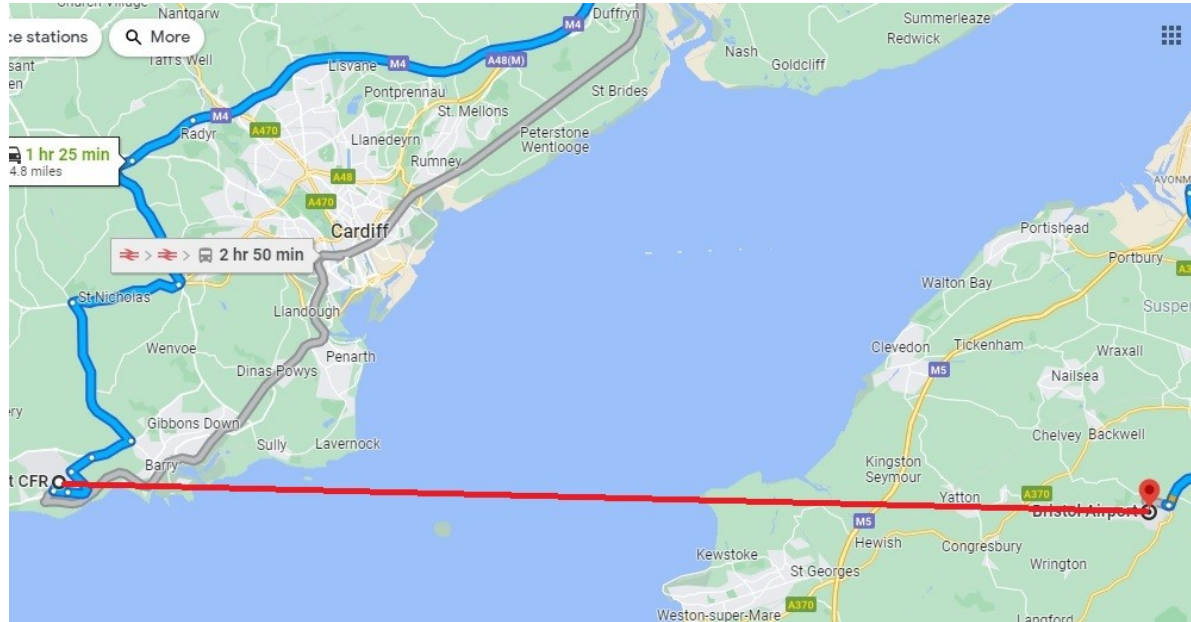
Air Travel and Safety

Local Plan Mapping and Local Plan Consultation and Appeal and PCAA and BOB Blog



In February this year (2022) airport owners won an appeal to enable, amongst other things, *"operating within a rolling annual cap of 4,000 night-flights between the hours of 11.30pm and 6am with no seasonal restrictions"*, with proposals in December 2018 to boost passenger numbers to 12 million a year by the mid-2020s. How does this fit with the 'Green Agenda'?

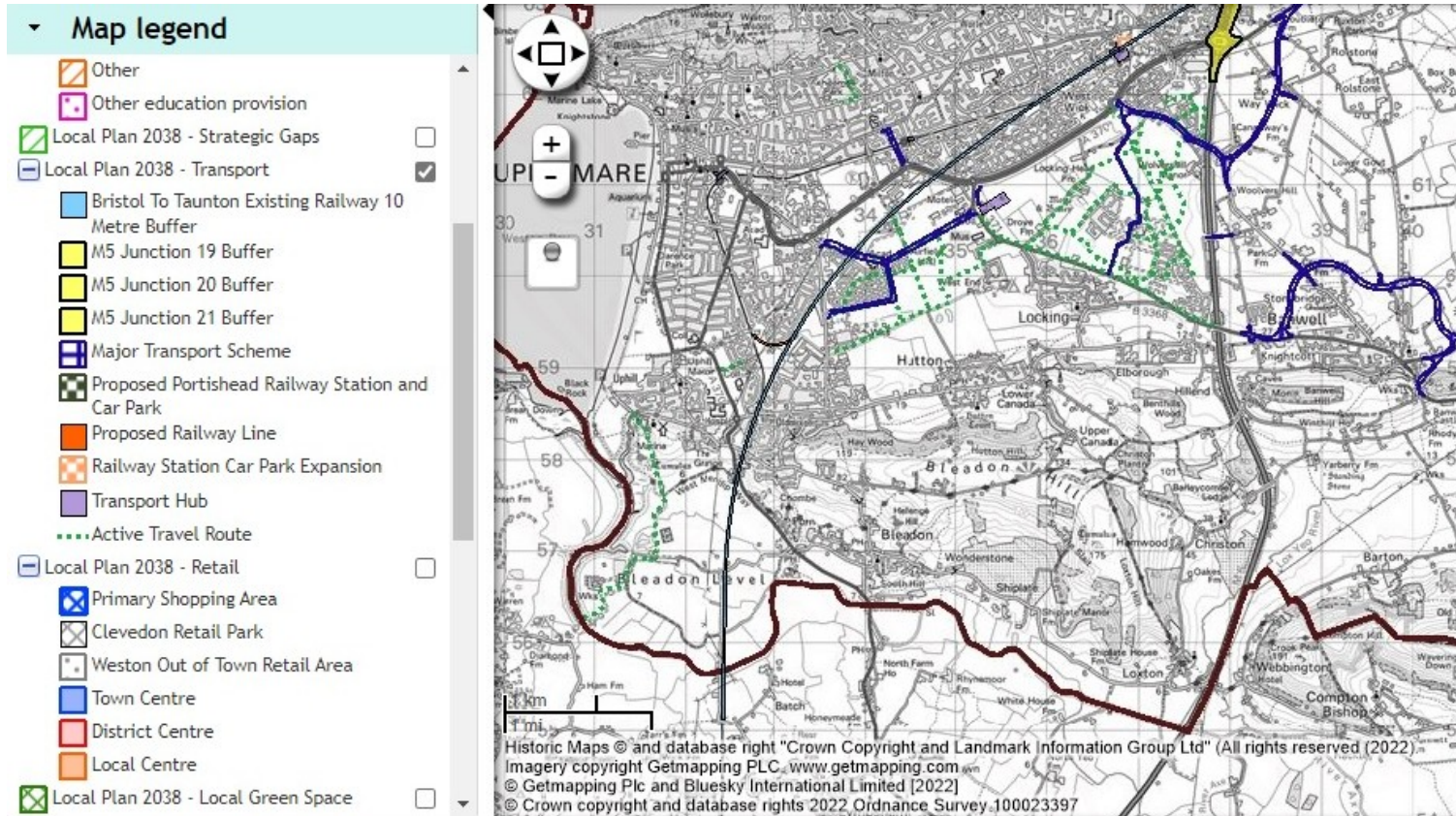
Bristol Airport Expansion & Maintenance



Is a maintenance flight route over/near Bleadon from Bristol Airport to a location in Cardiff, and if so, how many flights are undertaken each year and at what time of day/night?

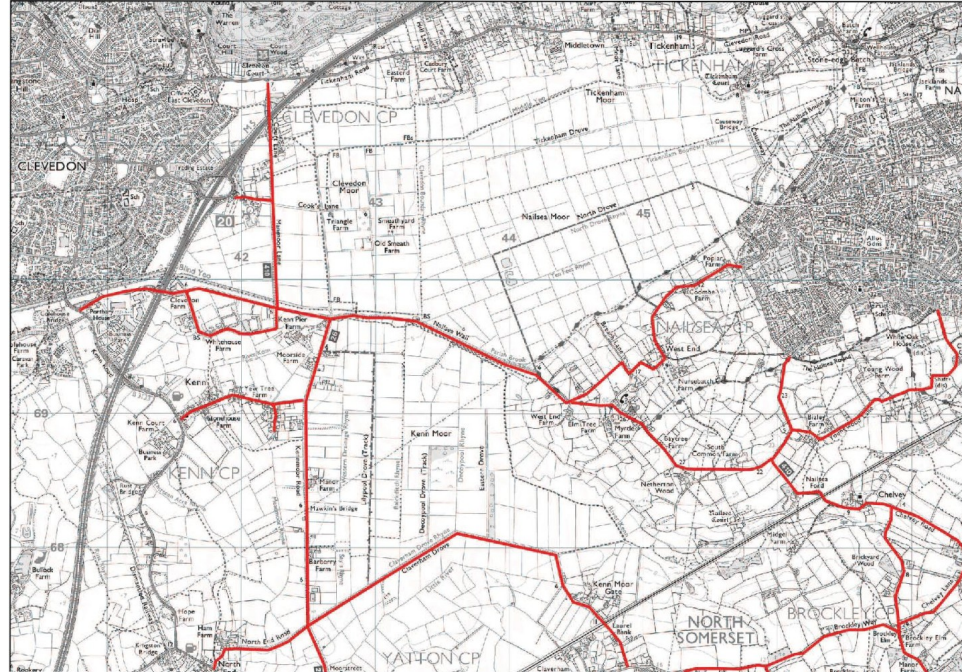
Transport

Local Plan Mapping and Local Plan Consultation



Rural Roads – Yatton area

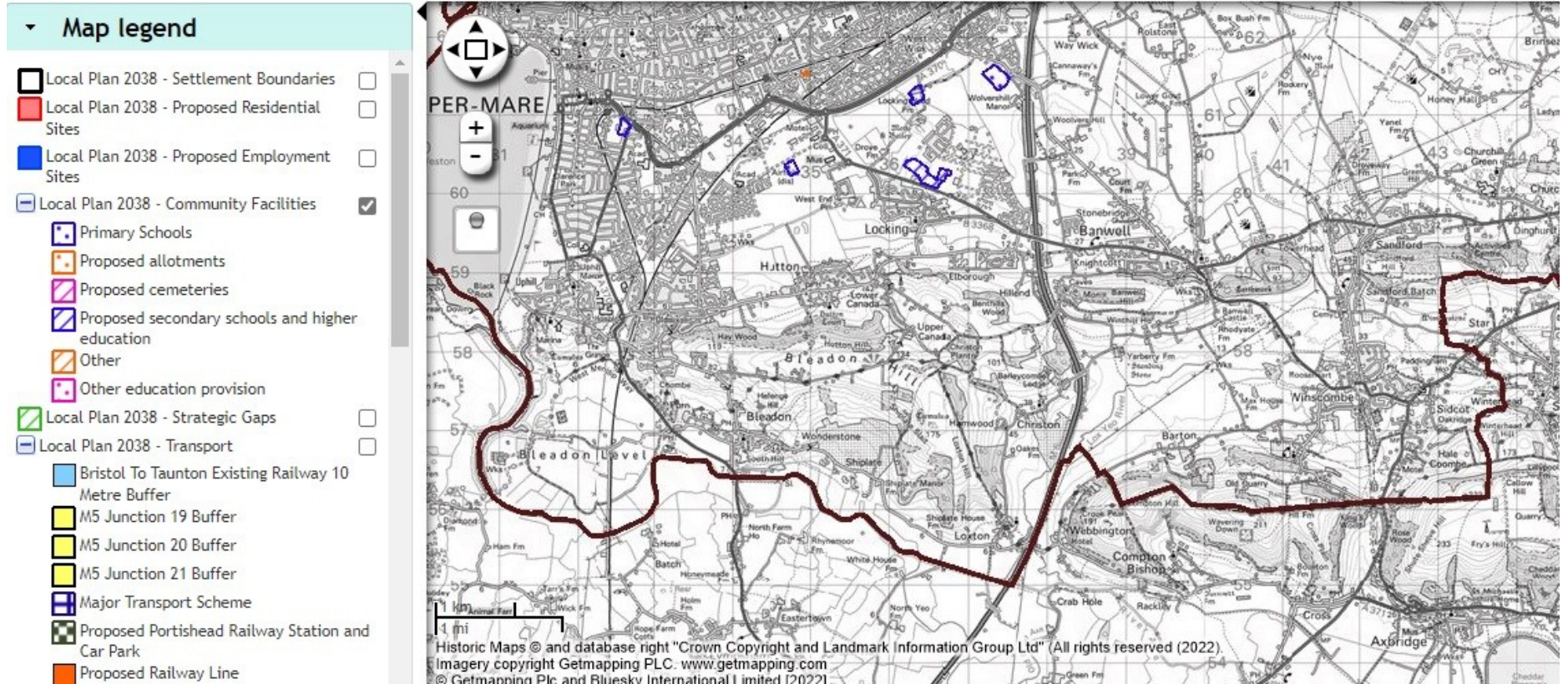
Rural Roads BOB Blog



After clear public protest and indignation, as seen via 'Save our Access' comments. Does NSC have any similar plans for Bleadon Parish

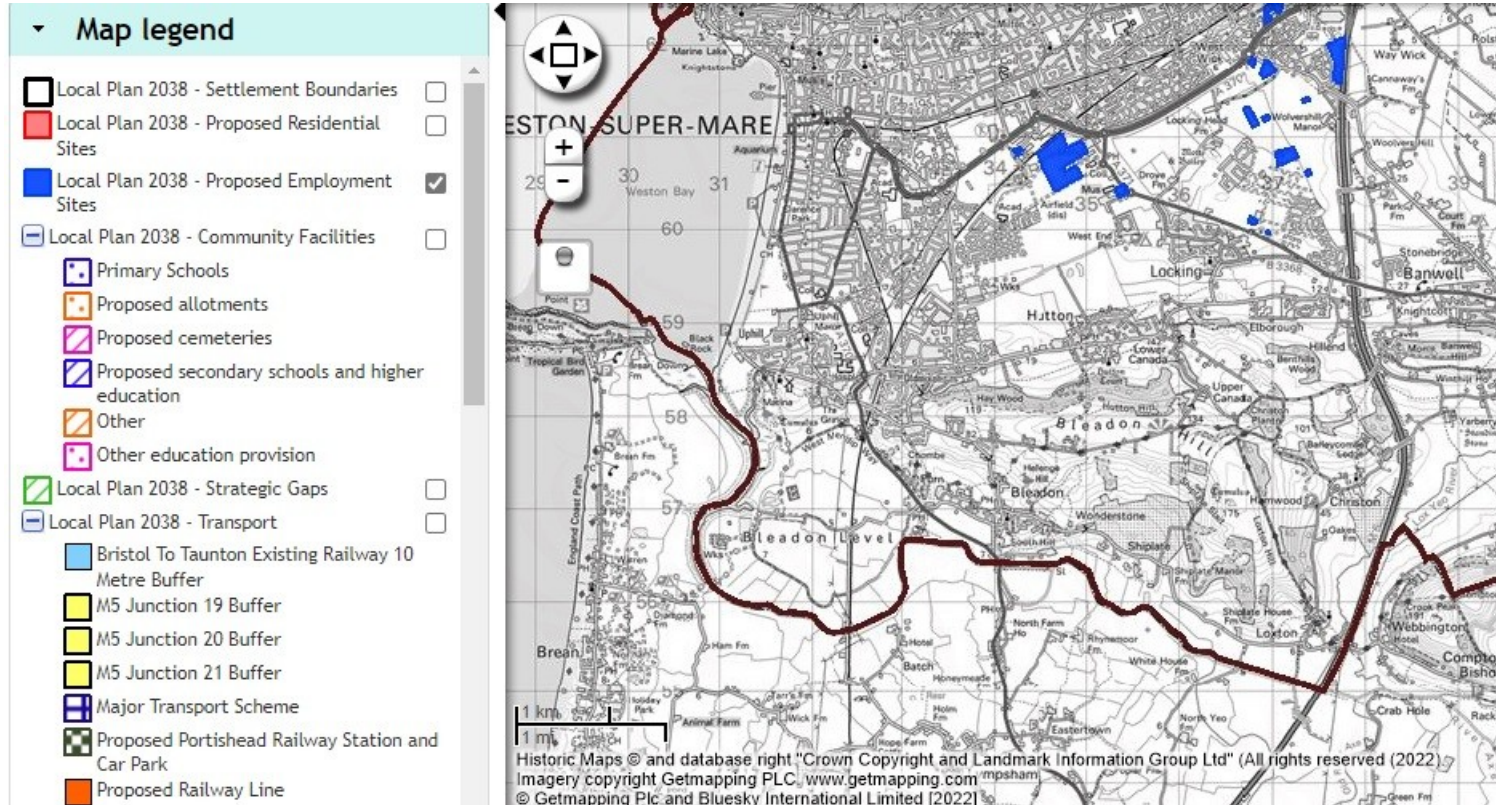
Community Facilities

Local Plan Mapping and Local Plan Consultation



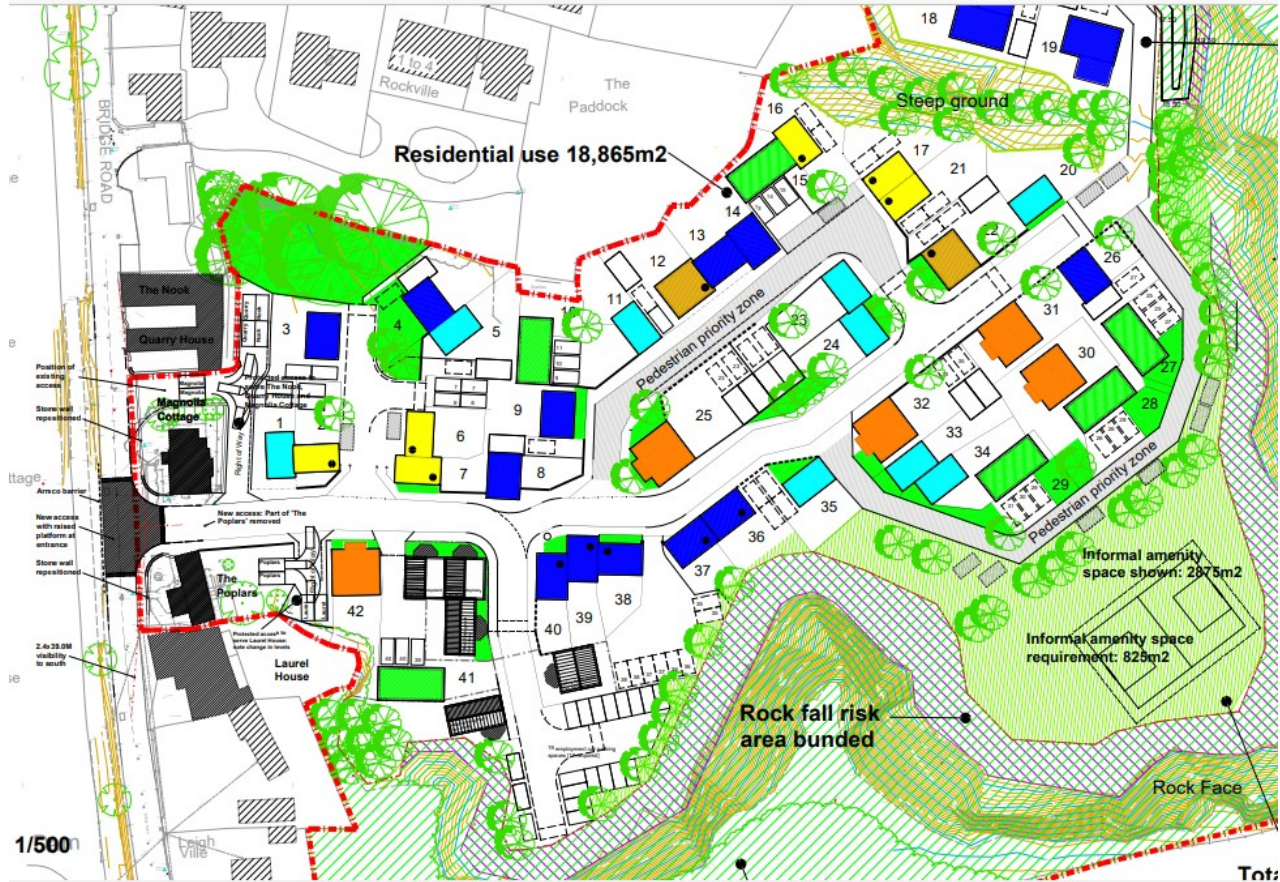
Proposed Employment Sites

Local Plan Mapping and Local Plan Consultation



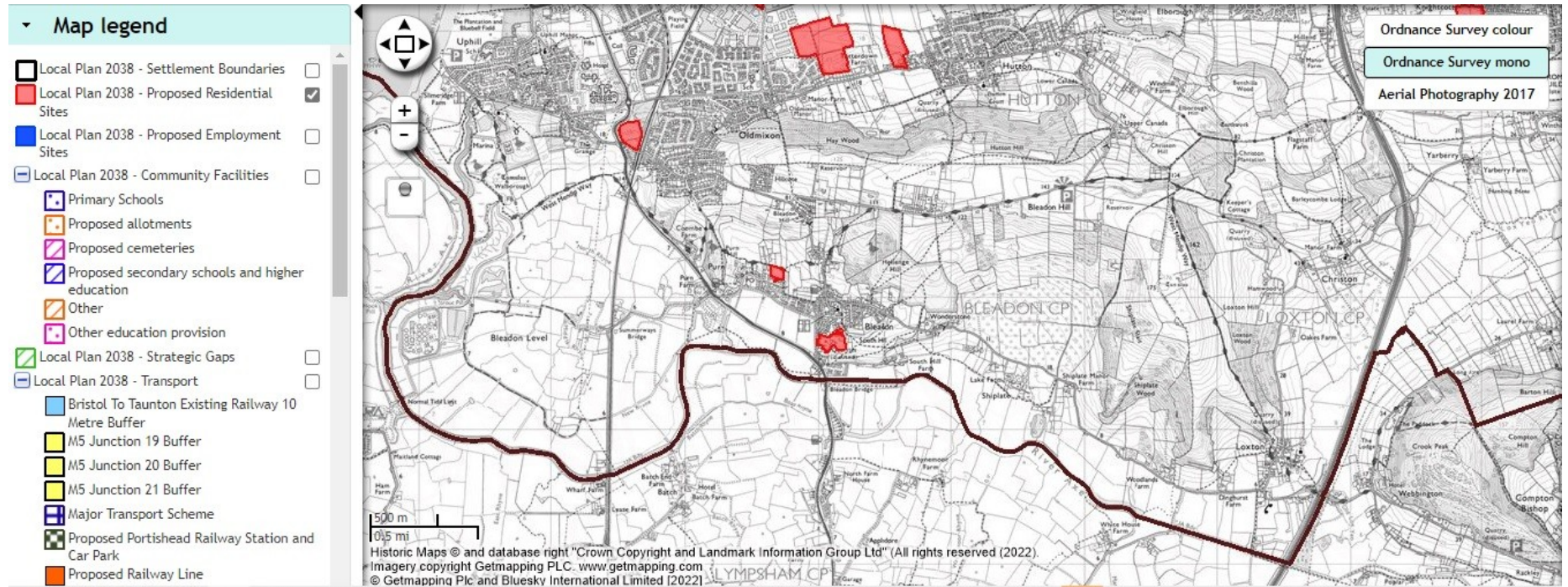
Quarry Employment Sites

Quarry Application on BOB



Proposed Residential Sites

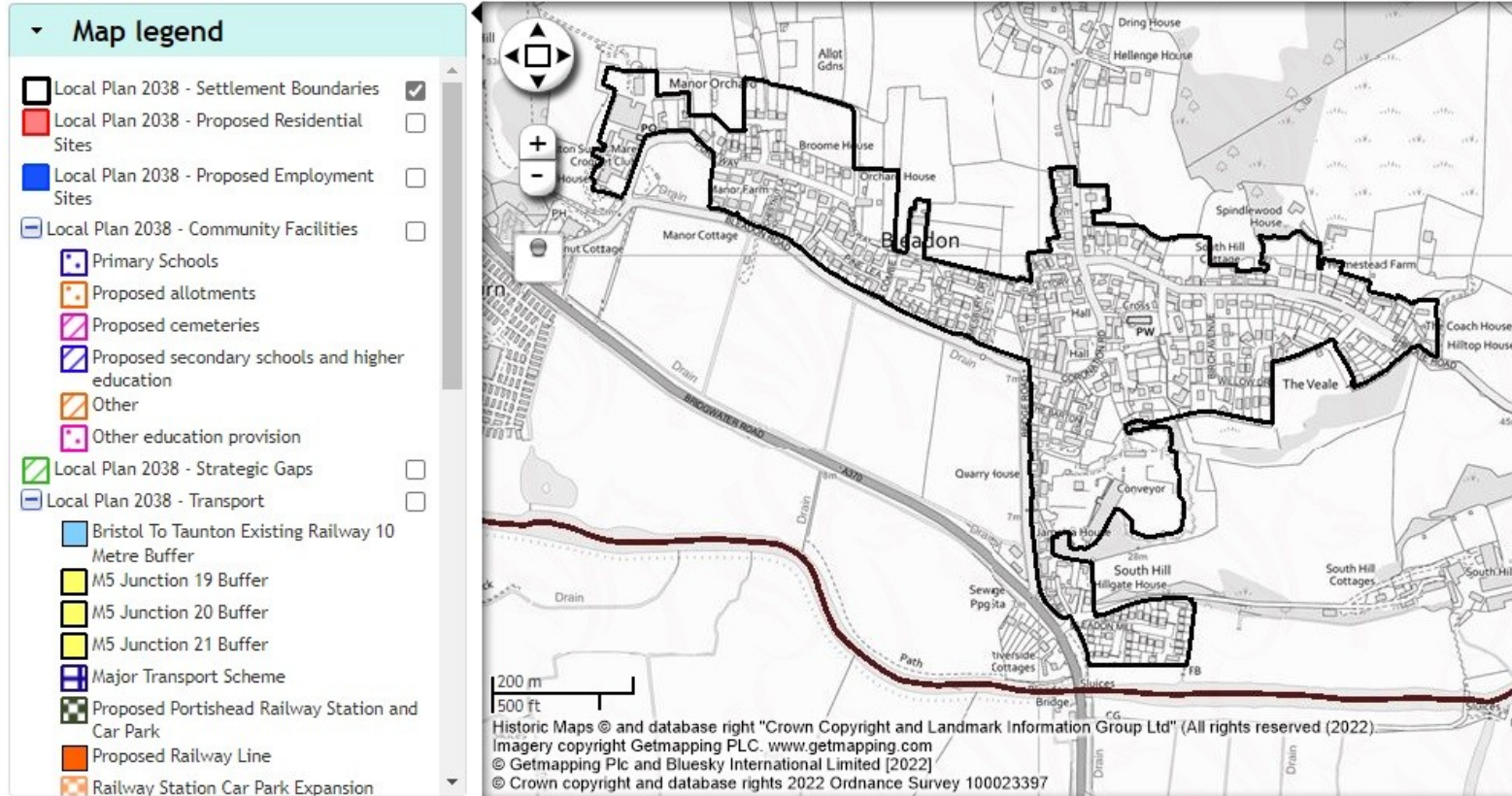
Local Plan Mapping and Local Plan Consultation and [Quarry Application on BOB](#) and [Purn on BOB](#)



“The Government has commanded North Somerset Council to provide 20,085 homes by 2038... the plan only proposes sites for 18,046 homes which is 90 per cent of the government’s Target” – I.e. it is currently 2K short of this quota

Settlement Boundary

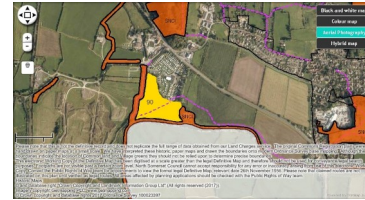
Local Plan Mapping and Local Plan Consultation and [Boundary Application](#) and [Parish Boundary](#) and [Settlement](#)



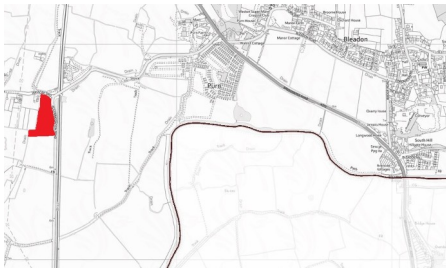
Applications Outside the Settlement



79 Cross-boundary houses – Refused on Appeal



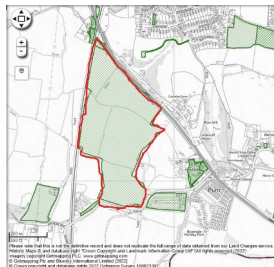
90 Units Purn Caravan site – 40 Granted



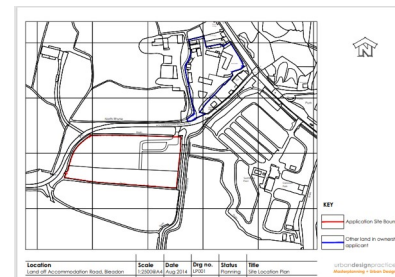
50 Caravans Wayacre Drove - Refused



10 Units Purn Caravan site - Refused



32K Solar Panels – Refused on Appeal



57 Units Old Boot Sale - Granted

Some Suggestions Received by Bleadon BOB

- Protect Bleadon's Rural Farming Heritage and its settlement character
- Ensure community and local food security
- Protect the diverse wildlife and countryside
- Improve parishioners understanding of farming to better support farmers
- Use the precautionary principle - allow Bleadon to focus on food security and other locations to focus on energy security - Put solar panels on roofs not fields
- Create a Strategic Gap for Bleadon
- **Send your comments to NSC by this Friday 5pm**