

YOUR Council Tax guide 2018-2019

INCLUDING POLICE AND FIRE BUDGETS



Open your own self-serve account today to manage and view your council tax online. Register at www.n-somerset.gov.uk/myaccount



www.n-somerset.gov.uk

Your guide to council tax

This leaflet provides information about the budgets for local public services for the year ahead and explains your council tax bill.

Depending on your household income, you may be eligible for help with paying your bill (see page 12 for more information).

In North Somerset we pride ourselves on our low council tax levels and have frozen council tax for three out of the last five years while also saving £60m from the council's overall expenditure since 2010. However, the national issue of ongoing increases in demand on adult social care and reductions in the amount of funding the council receives from central government mean that there will be a council tax increase for the year ahead.

The change in government policy for the funding of social care has led to a 3 per cent levy being applied to council tax bills, along with a general council tax increase of 2.99 per cent as a result of reduced central government funding.

We will continue to do our best to keep council tax in North Somerset below average and we remain committed to providing excellent value for money through the services we deliver.

Keep reading North Somerset Life for regular updates about our budget setting process.

Council documents can be made available in large print, audio, easy read and other formats. Documents on our website can also be emailed to you as plain text files.

Help is also available for people who require council information in languages other than English.

For more information contact: 01934 888 144

27241 02/17

Sometimes it's good to be part of a crowd



Almost 70% of households in North Somerset pay their council tax by Direct Debit meaning they never put themselves in danger of missing a payment.

Set up a Direct Debit and join the crowd today. Visit www.n-somerset.gov.uk/counciltax or call 01934 888 144.



What is council tax?

It's a local property tax levied by councils, to be used alongside central government funding, to pay for the local services they provide.

What does it pay for?

North Somerset Council provides a wide range of services including education, planning, transport, highways, social care, public health, libraries, leisure and recreation, recycling and waste collection, environmental health and trading standards among many others. The money you pay also funds the police and fire and rescue service, as well as supporting work in your local parish or town.

Parish and town councils raise their money primarily from a levy called a precept. We collect the precept on

behalf of town and parish councils and pass it on to them.

Who decides how much I have to pay?

Council tax is based on property value. Every property is put into a banding and charged accordingly after certain other factors are taken into account.

If you think your house is in an incorrect council tax band, you can appeal in writing to:

Council Tax West Valuation
Office Agency
Overline House, Central Station,
Blechynden Terrace, Southampton,
SO15 1GW

or visit: [www.gov.uk/
council-tax-appeals](http://www.gov.uk/council-tax-appeals)

or call: **03000 501 501**

Adult Social Care Precept

The Secretary of State for Communities and Local Government has made an offer to councils with responsibilities for adult social care.

The offer is the option of being able to charge an additional “precept” on council tax from 2016 without holding a referendum, to assist the council in meeting expenditure on adult social care. Subject to the annual approval of the House of Commons, the Secretary of State intends to offer the option of charging this “precept” at an appropriate level in each financial year up to and including the financial year 2019-20.

For councils with responsibilities for adult social care, council tax demand notices show two percentage changes: one for the part of the overall change attributable to the adult social care precept, and one for the part attributable to general expenditure.



Where does the money go?

The table below shows how the money will be spent on services and how that relates to the average council tax bill.

Service	Money spent £ millions	Share of Band D £
People and communities – including educating 28,000 pupils, 74 schools (including academies), pre-school provision, children at risk, adoption and fostering, residential care, community meals, services for people with learning difficulties, tackling homelessness and adult education	94.0	822.52
Development and environment – including maintaining 684 miles of roads, collecting household waste, recycling, parks, libraries, economic development, public transport and environmental health	35.4	309.95
Corporate services – including registration of births, deaths and marriages, legal, democratic and electoral services, council tax collection and benefits administration	6.6	57.80
Capital financing – infrastructure projects, new buildings and refurbishment e.g. schools and play areas	13.8	120.72
Other, inc. Non-service items & Contingency – included in your council tax and provided by others, e.g. magistrates courts, coroners service	2.7	23.35
Special expenses	0.0	0.32
Levy – Environment Agency	0.3	2.43
Special levy – drainage boards	0.5	4.53
Net North Somerset requirement	153.3	1,341.61

Proposed budget for 2018/2019

2017/18		2018/19		
Net exp £000		Gross exp £000	Income £000	Net exp £000
93,181	People and Communities	194,527	(100,566)	93,961
36,186	Development and Environment	50,415	(15,008)	35,407
6,718	Corporate Services	95,350	(88,747)	6,603
14,978	Capital Financing and Interest	15,686	(1,895)	13,791
2,977	Other, inc. Non-service items & Contingency	4,025	(1,358)	2,667
154,040	Gross expenditure	360,003	(207,574)	152,429
69	Special Expenses	36	0	36
273	Levy - Environment Agency	278	0	278
506	Special Levy - Drainage Boards	517	0	517
154,888	North Somerset requirement	360,834	(207,574)	153,260
4,336	Parish Precepts	4,672	0	4,672
159,224	Budget requirement	365,506	(207,574)	157,932
To be funded by:				
(34,610)	National Non Domestic Rates	0	(36,366)	(36,366)
(11,696)	Revenue Support Grant	0	(6,919)	(6,919)
(931)	Transitional Grant	0	0	0
(928)	Adult Social Care Support Grant	0	(577)	(577)
(5,096)	New Homes Bonus	0	(3,653)	(3,653)
(2,194)	Net Collection Fund Adjustment	528	0	528
(1,708)	Transfers to / from Reserves	0	(1,624)	(1,624)
102,061	Council tax requirement	366,034	(256,713)	109,321

The collection fund adjustment is the difference between the amount the council expects to raise from the council tax and business rates and the amount which is actually collected.

Council tax summary 2018/2019

The information below shows the amount needed to fund public services in North Somerset – not just those of the council but also the police, fire and rescue service, and parish and town councils.

2017/18 £000		2018/19 £000	
154,040	North Somerset Council (inc. Adult Social Care precept)	152,429	
69	Special expenses	36	
273	Levy - Environment Agency	278	
506	Special levy - drainage boards	517	
4,336	Parish and town council precepts	4,672	
159,224	North Somerset's budget requirement less:	157,932	
(34,610)	National non-domestic rates	(36,366)	
(11,696)	Revenue support grant	(6,919)	
(931)	Transitional Grant	0	
(928)	Adult Social Care Support Grant	(577)	
(5,096)	New homes bonus	(3,653)	
(2,194)	Net Collection fund adjustment	528	
(1,708)	Transfers to / from Reserves	(1,624)	
102,061	North Somerset's precept	109,321	
14,036	Avon and Somerset Police and Crime Commissioner precept	15,118	
5,349	Avon Fire Authority precept	5,565	
121,446		130,004	

The average Band D council tax for North Somerset will be:

2017/18 £		2018/19 £
181.81	Avon and Somerset Police and Crime Commissioner	193.81
69.28	Avon Fire Authority	71.35
1,206.38	North Somerset Council	1,244.21
59.43	Adult Social Care precept	97.40
56.15	Average parish/town council	59.88
1,573.05		1,666.65

Parish councils

Six parish councils in North Somerset raise more than £140,000 each through council tax contributions.

Local council	2017/2018	How much needed	2018/2019
Clevedon Town Council	46,750	Recreation	50,450
	29,625	Highways	29,035
	249,475	Other	264,641
	13,450	Contingency/balances	13,355
	339,300		357,481
Long Ashton Parish Council	67,330	Recreation	70,850
	36,098	Highways	21,848
	90,595	Other	85,705
	(39,423)	Contingency/balances	(20,403)
	154,600		158,000
Nailsea Town Council	178,210	Recreation	183,740
	29,600	Highways	33,106
	247,796	Other	252,088
	2,000	Contingency/balances	2,400
	457,606		471,334
Portishead Town Council	144,655	Recreation	171,331
	4,500	Highways	3,500
	158,401	Other	163,816
	(48,000)	Contingency/balances	(44,292)
	259,556		294,355
Weston-super-Mare Town Council	689,169	Recreation	769,096
	44,594	Highways	38,664
	951,874	Other	1,097,681
	0	Contingency/balances	0
	1,685,637		1,905,441
Yatton Parish Council	45,850	Recreation	70,600
	8,000	Highways	7,000
	154,428	Other	160,789
	(7,428)	Contingency/balances	(33,522)
	200,850		204,867

Council tax and housing benefits have gone digital

The council tax and benefit service is an online service. To access these services you must register and create an account. Registration is quick, easy and secure and will allow you to apply for benefits, discounts and exemptions. You can also let us know about a change of circumstances or a change of address, set up a direct debit or just view your account balance.

Going digital means we can process many of your requests earlier and provided any additional documents are submitted with your application, you may receive your benefit earlier. For those customers who may have difficulty getting online or have additional needs, support is available. Please visit us at the Town Hall, Weston-super-Mare or Castlewood Offices, Clevedon, visit one of our libraries or call us on **01934 888 144** and one of our customer service advisers will assist you.

Help with your bill

Council tax support

If you are on a low income and currently pay council tax, you may be eligible for council tax support even if you receive other benefits or council tax discounts.

Please visit our website to register for MyAccount and make your application online. If you are unable to get online or have additional needs please visit us at the Town Hall, Weston-super-Mare or Castlewood Offices, Clevedon where one of our customer service advisers will assist you.

You can also visit any of our libraries and use one of the public access computers to make your application.

If you receive council tax support an amount will be taken off the total council tax you owe for the year and this is shown on the front of your bill.



What to do if your circumstances change

If your circumstances change you must tell us as soon as the changes happen. It is an offence not to tell us about any change in your circumstances that affects your support and could result in a fine of £70 or prosecution. Don't rely on someone else to pass the message on. Examples of changes in circumstances are:

- you move home
- your rent changes
- any changes to the income or circumstances of anyone who lives with you
- someone moves into or out of your home
- you're going to be away from your home for more than four weeks.

If the change in your income affects your entitlement to Council Tax Support a revised bill will be issued.

You can request a written statement of your entitlement, within one month of the decision being made, by contacting the council on 01934 888 144. If you want to appeal, this should be in writing within two months of the decision, to the council, who will review the decision. If you remain dissatisfied a further appeal can be made to the Valuation Tribunal.

More help with your bill

Discounts

You can claim a discount if there are fewer than two adults living in the property. For Council Tax purposes we will not count the following groups of people when we assess the number of adults who live in the property.

- People who you receive child benefit for.
- Full-time students, apprentices and people on youth training schemes.
- Husbands, wives/dependants of students not allowed to take a job or claim benefits.
- People under 20 who are still at school or college studying a full-time course of further education.
- People under 20 who have left school between 30 April and 1 November.
- People who are severely mentally impaired and entitled to certain state benefits.
- Patients who live in hospital.
- Patients in nursing homes, residential care homes, hospices and hostels.
- People staying in certain hostels and night shelters who would otherwise have no home at all.

- People in prison or on remand. This includes people held under the Mental Health Act 1983.
- Care workers introduced by an official or charitable body.
- People who care for someone in the property with a disability who is in receipt of certain state benefits.
- Members of religious communities who receive no income.
- People with diplomatic immunity.
- People who are members of a visiting force.
- Members of international headquarters and defence organisations.
- Properties left unoccupied when a person dies until, and up to six months after probate.
- Unoccupied properties whose occupation is prohibited by law.
- Unoccupied properties being held for a minister of religion.
- Properties left empty by people who are receiving residential care.
- Properties left empty by people providing care elsewhere.
- Properties left empty by students.
- Unoccupied properties that have been repossessed.
- Student halls of residence.
- Properties that only students live in.

Other Discounts Available

- Unoccupied, unfurnished properties which are being or have recently been altered or repaired, maximum of 12 months.

Exempt Dwellings

We will not charge Council Tax on the following:

- Unoccupied charitable properties for up to six months.
- Properties left unoccupied by prisoners.
- Properties left unoccupied by people in hospital, care home, hostel, etc.
- Armed forces' barracks, messes and married quarters.
- Visiting armed forces accommodation.
- Unoccupied properties held by trustees in bankruptcy.
- Empty caravan pitches and boat moorings.
- Properties that are only lived in by people who are under 18.
- Properties that have an empty annex.
- Properties that are lived in by one or more people that are severely mentally impaired.

- Properties where at least one of the liable people is a diplomat.
- Properties with elderly or disabled people living in separate accommodation with families.

If your property falls into one of these categories then you may qualify for an exemption. Please contact us to discuss this further. If you are in any doubt as to your eligibility to a discount or exemption please ring **01934 888 144** or email

n-somersetCTAX@liberata.com.

Disabled Relief

If anyone in your household needs a devoted room, or an extra bathroom or kitchen, or extra space for wheelchair use indoors, in order to receive care or treatment arising from a substantial and permanent disability, you may be entitled to a reduction off your Council Tax.

For more information and details of how to apply please visit the Council website (www.n-somerset.gov.uk) or ring **01934 888 144** or email **n-somersetCTAX@liberata.com.**

You can also reduce the amount you pay each month by extending your payments into March.



Data Protection

North Somerset Council is registered with the Information Commissioner's Office for the purposes of processing personal data. The council tax service is administered on behalf of North Somerset Council by our partner Liberata UK Ltd., 5th Floor, Knollys House, 17 Addiscombe Road, Croydon, CR0 6SR.

The information you provide will be held and used in accordance with the requirements of UK and European data protection law. The information will form part of your council tax account, and held for six years after the closure and final action on that account.

Unless otherwise agreed with you, we will only collect the minimum personal data required to deliver the service, which includes your name, address, email address and contact telephone number(s). It does not include any special category personal information. The information will be used for the administration of council tax; our statutory duty under the Local Government Finance Act 1992. We will not use your personal information in a way that may cause you unwarranted nuisance. Failure to provide the information could result in the incorrect administration of your council tax account.

We may lawfully disclose information to public sector agencies to prevent or detect fraud or other crime, or to support the national fraud initiatives and protect public funds under the Local Audit and Accountability Act 2014. Under the conditions of the Digital Economy Act 2017, we may also share personal data provided to us with other public authorities as defined in the Act, for the purposes of fraud or crime detection or prevention, to recover monies owed to us, to improve public service delivery, or for statistical research. In addition we may also disclose information to a third party where we are satisfied that the party has both a legitimate interest in the information and that it would be fair to do so, in accordance with UK and European data protection law. We do not share the information with other organisations for commercial purposes.

If you have any questions or concerns about the way we process your personal data, our Data Protection Officer can be contacted at

DPO@n-somerset.gov.uk

How much will you pay?

Local council	2018/19 precept £	2017/18 precept £	Parish precept amount for Band D	Band A £	Band B £
Abbots Leigh	29,700.00	29,000.00	68.54	1,116.57	
Backwell	131,795.68	130,312.39	68.28	1,116.40	
Banwell	88,897.00	87,791.00	80.36	1,124.45	
Barrow Gurney	8,200.00	7,700.00	36.32	1,095.09	
Blagdon	40,250.00	39,250.00	77.76	1,122.72	
Bleadon	44,401.00	39,140.00	80.83	1,124.77	
Brockley	4,500.00	4,300.00	33.46	1,093.19	
Burrington	3,000.00	3,000.00	11.58	1,078.60	
Butcombe	2,500.00	1,900.00	22.60	1,085.95	
Churchill	60,800.00	58,295.00	64.31	1,113.75	
Clapton-in-Gordano	4,700.00	4,700.00	25.39	1,087.81	
Cleeve	15,244.00	14,800.00	41.65	1,098.65	
Clevedon	357,481.00	339,300.00	45.60	1,104.36	
Congresbury	110,131.87	107,297.00	78.66	1,123.32	
Dundry	11,426.05	8,822.74	29.55	1,090.58	
Flax Bourton	25,000.00	22,000.00	71.10	1,118.28	
Hutton	79,615.00	74,407.00	73.40	1,119.81	
Kenn	6,000.00	5,500.00	30.12	1,090.96	
Kewstoke	46,000.00	46,000.00	67.32	1,115.76	
Kingston Seymour	10,700.00	10,700.00	58.63	1,109.97	
Locking	79,000.00	77,000.00	66.88	1,115.47	
Long Ashton	158,000.00	154,600.00	59.74	1,110.71	
Loxton and Christon	3,000.00	3,000.00	31.98	1,092.20	
Nailsea	471,334.00	457,606.00	75.85	1,121.45	
Pill and Easton-in-Gordano	99,800.00	96,268.00	56.39	1,108.47	
Portbury	24,950.00	22,440.00	55.90	1,108.15	
Portishead	294,355.00	259,556.00	28.20	1,089.68	
Puxton	6,960.00	6,600.00	52.41	1,105.82	
St. Georges	16,335.00	16,335.00	14.53	1,080.57	
Tickenham	7,358.28	7,214.12	16.01	1,081.55	
Walton-in-Gordano	4,350.00	4,214.00	31.18	1,091.67	
Weston-in-Gordano	6,210.00	6,000.00	41.65	1,098.65	
Weston-super-Mare	1,905,441.00	1,685,637.00	74.14	1,120.31	
Wick St. Lawrence	13,500.00	13,500.00	24.16	1,086.99	
Winford	24,500.00	23,500.00	24.68	1,087.33	
Winscombe and Sandford	134,000.00	130,000.00	68.28	1,116.40	
Wraxall and Failand	44,631.00	44,631.00	38.50	1,096.55	
Wroughton	92,285.00	92,454.00	76.37	1,121.79	
Yatton	204,867.00	200,850.00	74.87	1,120.79	

Band B	Band C £	Band D £	Band E £	Band F £	Band G £	Band H £
1,302.66	1,488.76	1,674.85	2,047.04	2,419.23	2,791.42	3,349.70
1,302.46	1,488.53	1,674.59	2,046.72	2,418.86	2,790.99	3,349.18
1,311.85	1,499.27	1,686.67	2,061.49	2,436.31	2,811.12	3,373.34
1,277.60	1,460.12	1,642.63	2,007.66	2,372.69	2,737.72	3,285.26
1,309.83	1,496.96	1,684.07	2,058.31	2,432.55	2,806.79	3,368.14
1,312.22	1,499.69	1,687.14	2,062.06	2,436.98	2,811.91	3,374.28
1,275.37	1,457.58	1,639.77	2,004.17	2,368.56	2,732.96	3,279.54
1,258.36	1,438.13	1,617.89	1,977.42	2,336.96	2,696.49	3,235.78
1,266.93	1,447.93	1,628.91	1,990.89	2,352.87	2,714.86	3,257.82
1,299.37	1,485.00	1,670.62	2,041.87	2,413.12	2,784.37	3,341.24
1,269.10	1,450.41	1,631.70	1,994.30	2,356.90	2,719.51	3,263.40
1,281.74	1,464.86	1,647.96	2,014.18	2,380.39	2,746.61	3,295.92
1,288.41	1,472.48	1,656.53	2,024.65	2,392.77	2,760.89	3,313.06
1,310.53	1,497.76	1,684.97	2,059.41	2,433.85	2,808.29	3,369.94
1,272.33	1,454.11	1,635.86	1,999.39	2,362.91	2,726.44	3,271.72
1,304.65	1,491.04	1,677.41	2,050.17	2,422.93	2,795.69	3,354.82
1,306.44	1,493.08	1,679.71	2,052.98	2,426.25	2,799.52	3,359.42
1,272.78	1,454.61	1,636.43	2,000.08	2,363.74	2,727.39	3,272.86
1,301.71	1,487.68	1,673.63	2,045.55	2,417.47	2,789.39	3,347.26
1,294.95	1,479.96	1,664.94	2,034.93	2,404.92	2,774.91	3,329.88
1,301.37	1,487.29	1,673.19	2,045.01	2,416.83	2,788.66	3,346.38
1,295.81	1,480.94	1,666.05	2,036.29	2,406.52	2,776.76	3,332.10
1,274.22	1,456.27	1,638.29	2,002.36	2,366.42	2,730.49	3,276.58
1,308.34	1,495.26	1,682.16	2,055.98	2,429.79	2,803.61	3,364.32
1,293.21	1,477.96	1,662.70	2,032.19	2,401.68	2,771.17	3,325.40
1,292.83	1,477.53	1,662.21	2,031.59	2,400.97	2,770.36	3,324.42
1,271.28	1,452.91	1,634.51	1,997.74	2,360.96	2,724.19	3,269.02
1,290.11	1,474.43	1,658.72	2,027.33	2,395.93	2,764.54	3,317.44
1,260.65	1,440.76	1,620.84	1,981.03	2,341.22	2,701.41	3,241.68
1,261.80	1,442.07	1,622.32	1,982.84	2,343.36	2,703.87	3,244.64
1,273.60	1,455.56	1,637.49	2,001.38	2,365.27	2,729.16	3,274.98
1,281.74	1,464.86	1,647.96	2,014.18	2,380.39	2,746.61	3,295.92
1,307.01	1,493.74	1,680.45	2,053.89	2,427.32	2,800.76	3,360.90
1,268.14	1,449.32	1,630.47	1,992.80	2,355.13	2,717.46	3,260.94
1,268.55	1,449.78	1,630.99	1,993.43	2,355.88	2,718.32	3,261.98
1,302.46	1,488.53	1,674.59	2,046.72	2,418.86	2,790.99	3,349.18
1,279.29	1,462.06	1,644.81	2,010.33	2,375.84	2,741.36	3,289.62
1,308.75	1,495.72	1,682.68	2,056.61	2,430.54	2,804.47	3,365.36
1,307.58	1,494.39	1,681.18	2,054.78	2,428.38	2,801.97	3,362.36



AVON &
SOMERSET
POLICE & CRIME
COMMISSIONER

PROTECTING NEIGHBOURHOOD POLICING

I have been lobbying hard to secure the best possible funding arrangements for policing. In December, the Government made it clear that an increasing proportion of policing costs will have to be met by local council taxpayers.

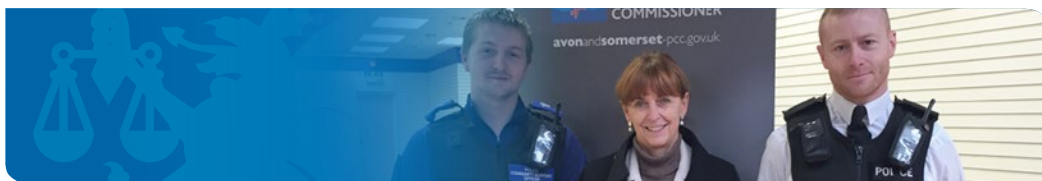
I recognise that any increase in household bills will be felt by you and I want to assure you that the policing you receive on a local level through your neighbourhood policing teams will be unchanged thanks to this increase in your council tax.

Neighbourhood policing is at the heart of our communities and is essential to ensuring Avon and Somerset remains a safe place to live and work.

Sue Mountstevens

Sue Mountstevens

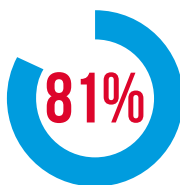
Police and Crime Commissioner for Avon and Somerset



AN AVERAGE
BAND D
HOUSEHOLD PAYS



300+
NEW POLICE OFFICERS



PEOPLE IN FAVOUR
OF A RISE

WE SPOKE
TO OVER
3,500
PEOPLE

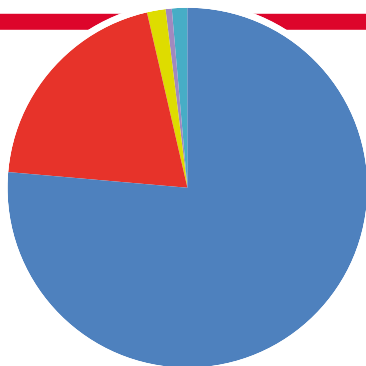


**AMBITION FOR EVERY PRIMARY SCHOOL TO BE ASSIGNED A NAMED PCSO
+ EVERY SECONDARY SCHOOL A NAMED PCSO OR BEAT MANAGER**

Find out more by visiting www.avonandsomerset-pcc.gov.uk

HOW WE SPEND THE BUDGET 2018/19

THE CHART BELOW SHOWS WHERE THE MONEY GOES



- Police Officers, Staff and PCSOs - £218.2m
- Running Expenses - £57m
- Capital Funding - £5m
- Office of the PCC - £1.4m
- PCC victim and crime related support services - £3.4m

WHERE DOES THE MONEY COME FROM?

	2017/18	2018/19
Funding from central government	£176m	£176m
Council tax	£102m	£109m
Total	£278m	£285m

CHANGES IN SPENDING

The net expenditure for the police will be £7m higher in 2018/19 compared to 2017/18 following a rise in council tax funding. The Police & Crime Commissioner (PCC) has taken the decision to increase the policing part of the council tax by £12 a year for the average band D household. **This means that the average band D precept will be £193.81.** This follows extensive consultation with over 3,500 residents. Although inflation and other unavoidable spending pressures will increase costs by £11m, savings have been agreed to balance the budget.



**AVON &
SOMERSET**
POLICE & CRIME
COMMISSIONER

Remember call **101** in a non-emergency and
always dial **999** in emergency
01275 816377 | www.avonandsomerset-pcc.gov.uk
pcc@avonandsomerset.pnn.police.uk



AandSPCC



Aandspcc



AVON
FIRE AUTHORITY

Your fire and rescue service

Avon Fire & Rescue Service (AF&RS) protects the communities of Bath & North East Somerset, Bristol, North Somerset and South Gloucestershire.

In 2018 - 2019 this service will cost Band D council tax payers £71.35 which is an increase of 3% on the previous year.

You might be interested to see below just a small snapshot of what our staff provided to local people between January and December 2017.

We continue to provide this vital service to keep you and your family safe, 24 hours a day, seven days a week, 365 days a year at cost of around 10p a day for each of the 1.1 million people who live in our area.

For more information visit www.avonfire.gov.uk  @AvonFireRescue  AvonFireRescue

In 2017, Avon Fire & Rescue Service

HANDLED **19,407** EMERGENCY CALLS  ATTENDED  VEHICLE FIRES

RESPONDED TO  **11,786** INCIDENTS  **678**

FITTED **11,013** SMOKE ALARMS  RESCUED **594**  PEOPLE FROM FIRE AND OTHER EMERGENCIES REDUCED OUR CARBON EMISSIONS BY **43%**

WAS CALLED TO **656** FIRES IN THE HOME  CARRIED OUT **9,345** FIRE SAFETY VISITS IN THE HOME  

VISITED **292** SCHOOLS TO PROVIDE SAFETY EDUCATION  ENGAGED WITH **1,021** BUSINESSES 

WAS CALLED TO **538** ROAD TRAFFIC COLLISIONS  ATTENDED **607** EVENTS IN THE COMMUNITY  TO PROVIDE ADVICE 

WE ARE HERE TO HELP  24 HOURS A DAY | SEVEN DAYS A WEEK  365 DAYS A YEAR | ALL FOR ONLY **10p** A DAY FOR EACH  PERSON IN AVON

Figures from January 2017 to December 2017

PROVIDING AVON FIRE & RESCUE SERVICE

Annual budget

Avon Fire Authority has set its net budget for 2018/19 at £41.843 million. This represents a Council Tax level of £71.35 a year for a Band D property, an increase of 3%.

The Government's funding assessment for Avon Fire Authority has been cut by £0.733m (4.34%) to £16.162m for 2018/19. The impact of this is that the funding provided by Central Government is reduced by £0.904m (7.26%) to £11.553m.

Spending plans

	2017/18 (£m)	2018/19 (£m)
Total fire expenditure	45.060	44.732
Income	-1.938	-2.322
Net budget before use of reserves	43.122	42.410
Use of reserves	-1.055	-0.567
Net budget	42.067	41.843
Funding:		
Central Government		
Revenue Support Grant	6.709	5.670
Business rate - Top-up	5.748	5.883
Local funding		
Locally retained business rates	4.557	4.658
Net collection fund surplus	0.385	-0.110
Council tax	24.668	25.742
Total	42.067	41.843

The main changes in spending from 2017/18 to 2018/19 are shown below:

Main changes in net expenditure	(£m)
2017/18 Budget	42,067
Inflationary pressures	1.115
Other	-0.078
Use of reserves	0.488
Savings	-1.749
2018/19 Budget	41.844

Savings

This year savings totalling around £1.7 million have been identified in the following areas:

Savings		2018/19 (£m)
Employees		-0.682
Running costs:	Premises	-0.132
	Supplies and services	-0.055
	Other	-0.810
	Income	-0.070
Total		-1.749



Capital requirements

The capital programme for 2018/19, excluding any capital expenditure within the 2017/18 capital programme that may be delayed or slipped into 2018/19, is shown below:

	2017/18 (£m)	2018/19 (£m)
Premises	0.500	0.000
Vehicles and equipment	1.588	1.508
IT and communications	0.200	0.200
Total	2.288	1.708

Advertising and sponsorship **opportunities**



STAND OUT!

Image credit: Paul Blakemore

To find out how North Somerset Council can help your business stand out in front of thousands of residents, tourists and new customers please contact Will Jenkins

01934 426 474 • 07584 607 239

will.jenkins@n-somerset.gov.uk • www.n-somerset.gov.uk/advertising



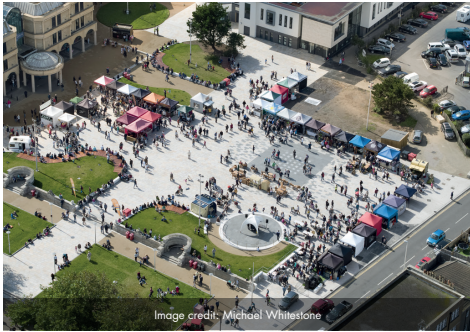
ADVERTISING WORKS WITH US

Coverage

No matter your audience, we have the solution for you.

Our opportunities can give you general brand awareness campaigns or specific messages targeted directly at your audience.

Our advertising reach extends to over 200,000 residents and nearly ten million tourists every year.



Opportunities

Unique access across North Somerset offering opportunities you can only find here.

From outdoor (lamp post banners, roundabouts, bus shelters and more) to indoor (tv screens in our council buildings, staff newsletters) and everything else in between (exclusive sponsorship opportunities on the Strawberry Line, North Somerset Life). Our multiple channels allow you to trial campaigns in ways you may not have previously tried.

The perfect offer

We'll tailor packages to meet your needs and work with you before, during and after your campaign to maximise your return.

You'll get a professional service from start to finish and our competitive rates allow even the smallest budgets space to advertise while also providing real value for money for those with a larger budget to spend.



27983 0118

To find out how North Somerset Council can help your business stand out in front of thousands of residents, tourists and new customers please contact Will Jenkins

01934 426 474 • 07584 607 239

will.jenkins@n-somerset.gov.uk • www.n-somerset.gov.uk/advertising



NORTH SOMERSET

LIFE

North Somerset Council's digital digest



Sign-up to our regular digital digest for the latest news and events delivered straight to your inbox.

www.northsomersetlife.co.uk

