

Bleadon News

Issue 124

December 2022

Happy Holidays!



Contact the editor:

Ellie Young

Bleadonnewseditor@gmail.com

Insta: @BleadonVillageNews

Thank you to Penny Robinson for this beautiful front cover image.

Top stories:

Page 5: The playground is here!

Page 6-7: Bleadon gets GOLD!

Page 8: Bleadon WI's ball

Page 12-13: Cuttings and their consequences

Letter from the Chair

By Kirsten Hemingway

What a wonderful month to be part of the Parish Council.

Congratulations to the Bleadon Bloomers for bringing home GOLD! It is a great achievement and within so few years of our first entry – fantastic work. Well done The Queens Pub for your second GOLD year too. And also, to each of the smaller projects in the village which also contributed great levels of achievement to the overall project.

Well done to the WI on an excellent ball and for delivering a great event and some much-needed support. It's not just jam is it?

A fantastic event was held by the parish council to welcome the new people into the village. Les Masters delivered an excellent run down of the history and many groups turned up to introduce themselves.

We were graced by both our local council representatives who did an excellent job of speaking to the audience and describing how we and they can help. There was a team of superheroes in the kitchen and the drinks of wine went down well as did the cider donated by Thatchers. There was plenty of cheese and crackers – it was an excellent event.

It's great to see the allotments at this time of the year – all busy being planted and tended for next year. It's also fantastic to see the work in the fields and everything is being prepared for next year and the animals are all looking in good shape for winter.

We are getting prepared for the children's tree planting. I am excited to share the design that has been donated to the Bleadon Bloomers by John Hickley who has done much of the design work in the village.

We have been given so much support and help to make this project live that we are truly lucky to live in a village that cares so much about the other people they share it with.

This project is led by the Bleadon Bloomers who will share a full report in the next edition of

the magazine. If you have a child or know of any, please get them to get in touch with Gill Williams or the parish clerk so we can get them a plaque made and a tree to go with it. If you don't have anywhere to plant your tree that is no problem. We have some generous landowners who have donated spaces for the children's trees. All of them are accessible to the child to whom the tree will be dedicated.

Our grant application was successful for the play park, and we have also been supported with other grants towards the tree project. We are using CIL money to match fund the play park and we will also be hopefully finalising the funding of the re-gilding of the clock this month.

As a body, we are aiming to find out more information about the development in the quarry and other developments around the village. We will be waiting to find out about funding to create some warm spaces for the months of December, January, and February to support people in the village who are not keeping their heating on. We hope to be able to get some support to be able to run some workshops about making the most of the heating and how to best use the electricity on a budget.

We are starting to think about the His Majesty The King's Coronation, and we are interested to hear from any groups or individuals who have some ideas to share. Thanks to the WI for being ahead of the curve here and hopefully they will be arranging a get together.

We are also going to be re-making the Jubilee Garden area and are finding quotes to remove what's there. If anyone has any need for any of the bushes, then please get in touch quickly.

All that remains for me to do is to wish you all the compliments of the season, take care of your neighbours and check they have someone to wish a Merry Christmas to on the day.

Happy New Year all – let's make 2023 a fantastic year for the Parish of Bleadon.



Welcome new residents

by Gill Williams

Everyone who attended our Contactus evening held in the Coronation Hall, in Coronation Road, in October seemed to be having a great time.

Certainly at the end of the event when it was time to go home, nobody moved and the chatter and the laughter continued unabated!

This, of course, might have been due to the cider, generously provided by Thatchers, and happily consumed by the majority of those present.

Les Masters gave us a brief but fascinating account of the history of the development of Bleadon over the past century which was really interesting, even though I have lived here for more than 22 years.

I was reminded of several things that have disappeared, people too and Les did a great job in giving us a taster of two longer talks on the village history he hopes to give us later this winter.

It was lovely to welcome the whole range of vil-

lage clubs and societies who had turned out to show what a great range of interests and activities are catered for in Bleadon.

The council used to run this event on an annual basis but, of course, COVID stepped in and stopped the 2020 and 2021 events.

We are now thinking that maybe this event should be held every two years so we would be able to welcome a reasonable number of newcomers.

On the other hand, if you have already been here for two years you possibly know what goes on anyway. Either way the event always turns into a very friendly occasion when faces you have seen walking a dog or inspecting stalls at the village market are given a name and the opportunity to become friends.

We used to have a system of a neighbourhood rep in each road or small area who would look out for new arrivals. Is this a good idea? Do you know if your area had/has one? Is the village web site or Facebook sufficient to tell you what is going on? How would YOU like Contactus to develop to welcome newcomers to our pleasant village?

A letter to the Editor would be very welcome.



Name	Email
Kirsten Hemingway	Kirstenhemingway @bleadonparishcouncil.co.uk
Gill Williams	Gillwilliams @bleadonparishcouncil.co.uk
Mary Sheppard	Marysheppard @bleadonparishcouncil.co.uk
Huw Boyce	Huwboyce @bleadonparishcouncil.co.uk
I D Clarke	Idclarke @bleadonparishcouncil.co.uk
Ann Davies	Anndavies @bleadonparishcouncil.co.uk
Sara Garrett	Saragarrett @bleadonparishcouncil.co.uk
Graham Getty	Grahamgetty @bleadonparishcouncil.co.uk

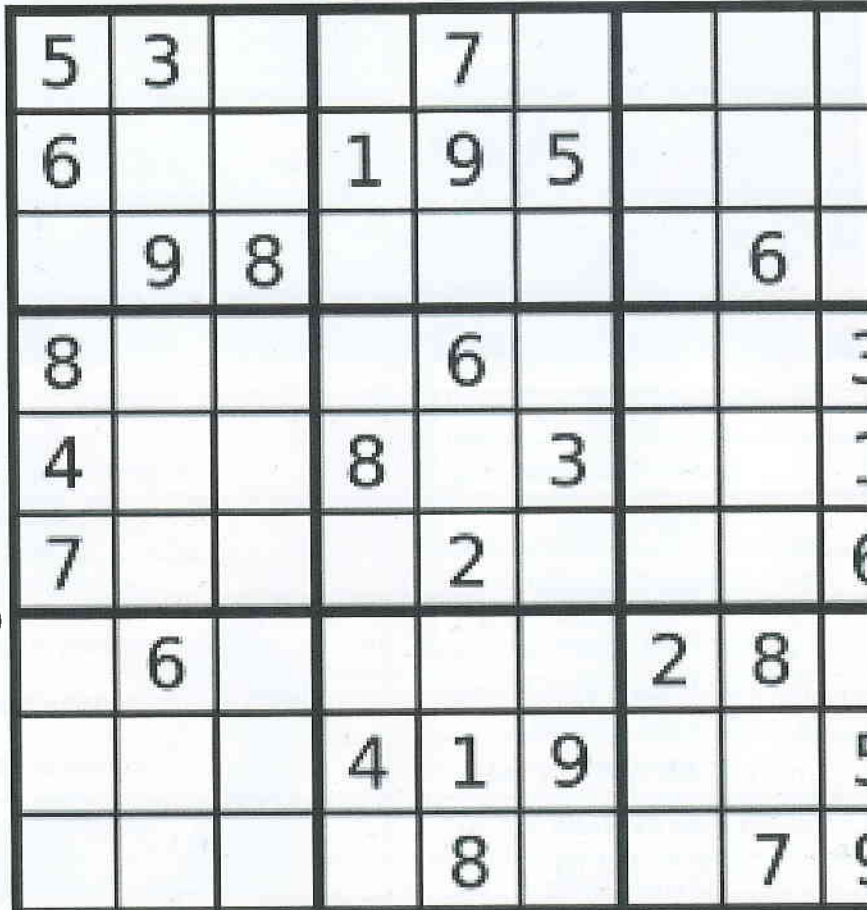
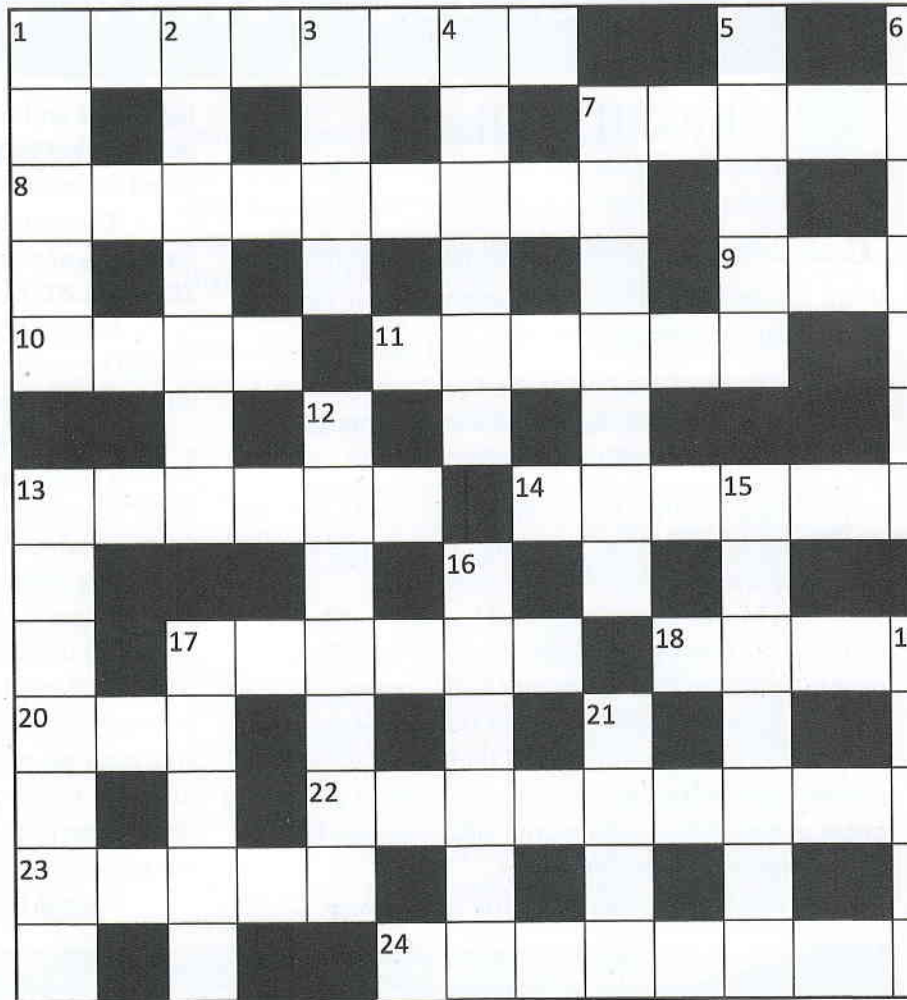
George's crossword

ACROSS

- 1. Italian Scotsman perhaps from Bucharest (8)
- 7. Lawrence in conflict borne by 1 down 9 across (5)
- 8. Latin voice comes to a stop (3, 6)
- 9. See 1 down
- 10. Right external defeat (4)
- 11. Jacob's wife has pain between both sides (6)
- 13. Shock tore me apart (6)
- 14. Ropes often complex (6)
- 17. Ease south frequently (6)
- 18. Dose of poetry perhaps (4)
- 20. Three directions up-to-date (3)
- 22. Old Italian way looks over Bleadon (5, 4)
- 23. Intends resources (5)
- 24. Perhaps Pop rests on corks (8)

DOWN

- 1 & 9 across. Sharp flower in Somerset (5, 3)
- 2. Rum exit is a blend (7)
- 3. Non-U part of speech (4)
- 4. God has a vat arranged within (6)
- 5. Possibly the least to take (5)
- 6. French cheese pest in short (7)
- 7. Tree in group at the laundry (7)
- 12. Heavy smokers chests heard perhaps (7)
- 13. During Whitsun a minister has a big wave (7)
- 15. A bit north or south for a young frog (7)
- 16. Lonely man found in another mitten (6)
- 17. South-west organ on oath (5)
- 19. These are taken in a fight (5)
- 21. Break a card game (4)



New playground is here!

By Gill Williams
& Sara Garrett

If you have been down to the play park in the past week or so you will have seen that our long awaited update of equipment for our older children is now in place.

It did cost £10,000, but 50 per cent of that cost came from a grant from North Somerset Council and we think the result is well worth the effort to plan and organise it for that price.

There are eight different pieces of equipment installed and each one offers a range of challenges in terms of the active developing skills children of this age need.

The passive swinging actions that the little ones enjoy are now developed into active hanging and swinging, both right way up and even upside down with only one arm or leg being used as an anchor.

Balancing needs now to be both a static and mobile activity and the equipment allows for this. It also allows for a range of opportunities for directional changes.

Children can move forwards, sideways and backwards and not only on their feet. Other opportunities also exist in that the whole set of apparatus is approximately 17 metres long so that transitions between actions come into play and the challenge can be 17 metres or just two or three metres long while the child perfects their chosen skills.

In addition there are opportunities for cooperation and competition with other children both essential social skills at this age range.

Just think of the great sense of achievement children will gain when they set themselves the challenge of travelling the whole trail with a wide range of skills without the need to touch the ground and finding ways to pass each other when they meet a child going the other way.

If you have children in

the six to 12 age range, do let them come and explore this new challenge. If your children are younger they can still enjoy the individual pieces and explore them at their own level.

In the 2019 survey you all completed as part of the neighbourhood/village plan, one of the five issues you identified was that of improved recreational opportunities for the older child.

We haven't managed a football pitch yet, but we are gradually responding to your requests.

If your children enjoy the new equipment, please do ask them to send us two or three sentences about why they enjoy it and what sort of activities they are achieving on it.

We can then publish them in the next issue of this magazine. Photographs of them in action would be great too.

Send them to Gill at gwilliams28@btinternet.com. We look forward to seeing a busy active play park from next week!



GOLD for Blea



By Robin Flavell

Bleadon was awarded Gold in the Britain in Bloom competition for 2022.

This is the highest level awarded by the RHS showing excellence against the three judging categories: horticulture, community involvement and care for the environment. It's been the culmination of four years of team work to reach this standard in the competition.

The judges were taken on a tour around the

village visiting two beautiful cottage gardens, a Mediterranean inspired garden, and a lovely example of a living roof. They were impressed by the level of knowledge and commitment of the garden owners.

The village looked neat and tidy; the notice-boards had been smartened up and the roads cleared of weeds. There wasn't a weed in sight around the village hall and car park!

The village flower displays were commended, the judges remarking on the improvements from last year. They particularly liked the crowns we picked for the Jubilee and the perennial plants we chose for our displays which we can use again next year.

The Queen's Arms won a well-deserved gold for the second year running in the business category. Their hanging baskets and pots looked magnificent on the judging day and all through the summer.

The Bloomers came out in force to show how we'd been working together to set up a community allotment and polytunnel to grow our own flowers and fruit and vegetables.

The Rev Tim Erridge kindly gave up some of his valuable time to talk about the work of the churchyard gardening team, including the planned rewilding project.



don in Bloom!

Our wildflower planting has started to flourish, particularly around the bus stop on Bleadon road.

The trees donated last year by Thatchers Cider have survived the dry summer, I even spotted one or two apples!

As well as our gold award we won the Mary Mortimer trophy for the best village with less than 1,500 inhabitants in the whole of the South West Region.

And finally, we gained 5 'It's Your Neighbourhood' awards for specific areas – Bleadon Mill, Roman Road, Thatchers Orchard, Bleadon Farm Shop and The Churchyard.

Thank you to everyone who contributed to our success this year. We should all be proud of what we achieved. It was an exceptionally dry summer, so our particular thanks go to everyone who kept on watering our displays right

through to September.

Wishing everyone in Bleadon a wonderful Christmas and a happy & healthy New Year. Let's see if we can keep our village looking as good next year!



Bleadon WI



by Elaine Mellor

We've had a busy few months here at Bleadon WI. Members attended a fabulous garden party at our President's home in August. We enjoyed a bring and share buffet, were warmed by firepits, danced to a silent disco and enjoyed the arrival of the ice cream van.

Our September meeting was tinged with sadness, falling just as we heard of the Queen's passing.

We used our time together to remember and celebrate the life of Her Majesty, a loyal and committed member of the WI organisation.

September 24 saw many members and their friends attend the Bleadon WI Ball at the Winter Gardens. Everyone enjoyed a lovely meal. We were then entertained by the Singing Waiters followed by dancing to Six Machine and a disco.

Raffle tickets were sold and an auction was held all in aid of our charity the Great Western Air Ambulance. We are so proud to have raised £7,600, and counting, for this amazing charity who do such good work in our community.

Our AGM was held in October. Michelle Harper stood down after four years as our President. She really has kept us all going. Her knowledge of Zoom has been what kept our group going through Covid. She will certainly be a hard act to follow. Our new committee and President, Veronica Hoare, was then elected.

As many of you will, hopefully, have noticed we have once again put up displays of knitted and crocheted poppies by the Church and Coronation Hall.



Thanks to all our members, friends and partners that have helped make this happen.

We are now, very much, looking forward to the year ahead with exciting speakers and many trips planned. Our regular groups, book, skittles, supper clubs and our new creative writing group continue to meet and flourish. Bleadon Belles, our choir, continue to meet every Tuesday and are busy preparing for Christmas. Our Carol Concert will be at the Church at 6.30pm on Friday 16 December.

Bleadon WI membership is currently at our maximum of 100. If you do wish to be added to our waiting list, please email bleadonwi@hotmail.co.uk

Bleadon Belles

by Jo Jones

The Belles are getting ready for Christmas! Their celebrations will include the now traditional WI Christmas Carol Service which will be held in St Peter & Paul's Church, Bleadon for the first time since lockdown. It will be good to be back.

The service starts at 6.30 on Friday 16 December. It will be followed by a torch lit walk to the Queen's Arms for a singalong and mince pie.

Wrap up warm and come and join us. We have been invited back to sing carols at local nursing homes and the Friendship Christmas lunch.

We are preparing for more performances next year. The choir are all members of Bleadon WI.

There is no audition and new members are always welcome.



Who pays for Bleadon Youth Club?

In the heart of Bleadon village, alongside the parish council car park, sits a grey box of a building that proudly proclaims itself as the home of Bleadon Youth Club. So who pays for it?

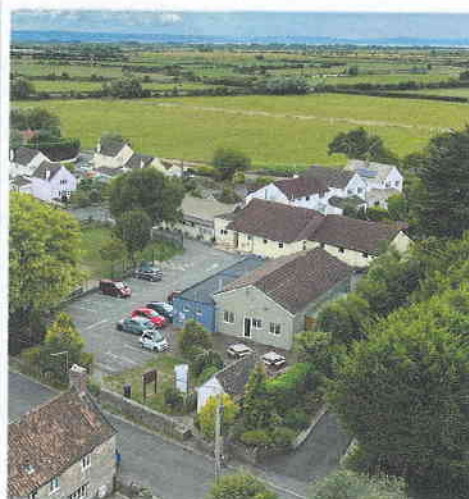
We recently increased the weekly subscription that our young members pay to come to Bleadon Youth Club on a Thursday evening. The subs went up from £1.50 to £2 each week. This was the first increase in eight years.

In the face of increased costs for every household in the land it's hardly surprising that some youngsters and parents questioned the increase in subs.

That got me thinking that maybe we need to explain how this little village can afford to run a youth club and maintain such a valued community building.

Bleadon Youth Club is a Registered Charity with five local Trustees and a small Management Committee of volunteers who look after the building, raise funds and commission a weekly youth club service from the YMCA.

For the YMCA to provide the weekly youth club sessions throughout the school terms costs us around £5000 a year. The weekly subscriptions of £2 might bring us in around £1600 if we're lucky enough to keep attendance figures in the 20s each week. That's far short of the



actual cost of running the youth club sessions. Fortunately, selling tuck on a Thursday evening is a bit of an income bonus

Add to this the current annual £5,500 cost of maintaining, heating, lighting insuring and cleaning the building.

To meet the shortfall we rent out the building to regular and casual users. That usually brings in just about enough income to cover the cost of the Youth Centre building.

Then there's the hard earned raising of funds through local events like the May Day Fayre and events at the Queens Arms.

So, between subs, tuck sales, renting out the building and your local generosity at our fundraising events we just about scrape by each year.

We are privileged to have such a facility for young people in our village. These days youth clubs are getting as scarce as hen's teeth. Which probably explains why we are seeing record numbers of youngsters attending each week. The young people in Bleadon, Lymsham and as far away as

Wedmore just need somewhere to socialise with friends for a couple of hours. Let's be grateful than we can still oblige.

You can help in a number of ways:

- Support our local fundraising events - look out for a Quiz at the QA after Christmas and the May Day Fayre in 2023.
- Join the management committee that runs things - we aren't a talking shop. Our meetings every two months rarely last an hour.

Keith Pyke

Bleadon Youth Club Treasurer

01934 813127

keith.pyke@btopenworld.com

Veterans Table Tennis Club

The Veterans Table Tennis Club has been in existence since the 1980's. We meet at Bleadon Youth Club on Wednesday nights and are looking for new members, who aren't complete beginners, to join us and play table tennis. We play on two tables, mostly doubles depending on the number of members attending.

For more information email: ann@sandford-ca.co.uk or telephone Roger on 01934 813164.



What's coming up?

The Christmas (Market) is coming to town!

by Jo Jones

In the last edition we highlighted the work of our kitchen volunteers. It is also important to mention those volunteers who do the many other jobs like putting out road signs.

The signs and banners are a really good reminder that the market is going to happen soon.

Volunteers also set up the halls the evening before the market, putting out tables and chairs in the two halls and putting out traffic cones to keep the road clear. Of course it all has to be put away again afterwards leaving the halls clean ready for the next user.

They are a great bunch and do it for their village. With their help the market raises between £300 and £400 a month for improvements and upkeep of the village halls, a great asset to our community.

So in addition to the kitchen helpers who also

help to clean up, a big thank you to Dave, Kevin, Andy, Richard, Adam and Graham. We always need more helpers.

Please think about giving up a little time every month or so to support your community. Contact Jo by messaging the Market Facebook page.

Don't miss Bleadon Christmas Market which is on Saturday 3 December from 9.30 – 12.30 in the four halls in the heart of the village. More than 50 stalls selling Christmas delights and goodies. Raffle. Refreshments. Something for everyone.

See you there!



BLEADON CHRISTMAS MARKET

Saturday 3rd December 9.30 - 12.30

**Bleadon Coronation Halls BS24 0PG
Youth Club Hall & Church Room**

**Over 50 festive stalls - RAFFLE - refreshments
something for everyone**

**Limited parking at halls, please park safely in village
and walk, its not far!**

A Little Panto on the Prairie

By Tim Clarke

Welcome to the wild, wild west and the town of Windy Bottom, the setting for Rich Lock's new, original, pantomime.

Madame Moonshine runs the local saloon with her hapless barman, Tumbleweed. The evil sheriff, Cactus Jack, has plans to take over the saloon and turn it into a casino and will stop at nothing to achieve his goal.

This involves hiring a couple of Mexican henchmen, to kidnap our heroine, Sandy, and keep her as a threat in the old abandoned mine to

prevent our hero, Buck the cowboy, from winning the Cowboy Derby, because if Sheriff Jack wins he will be able to evict Madame and get his evil hands on the saloon.

Tumbleweed enlists the magical help of a very unlikely Fairy Saddle-Sore when he 'rescues' her from a well. All sorts of mayhem ensues with every pun, corny joke, risqué comment and laugh possible squeezed out of a very clever, funny script.

Dates are 26th to 28th January with evening performances at 7.30pm and a matinee on Saturday at 2pm. Tickets cost £10 per adult and £5 per child. You can also purchase a family ticket online for £28 at www.ticketsource.co.uk/bleadon-players

Evening of festive fun with Sugarcrafters

By Sue Dennelly

Come and join us at the Bleadon Sugarcraft Club on Thursday 24 November with a Christmas cake decoration practical evening by Trudy.

The time is 7.30pm and final details will be posted on the Bleadon Sugarcrafters Facebook

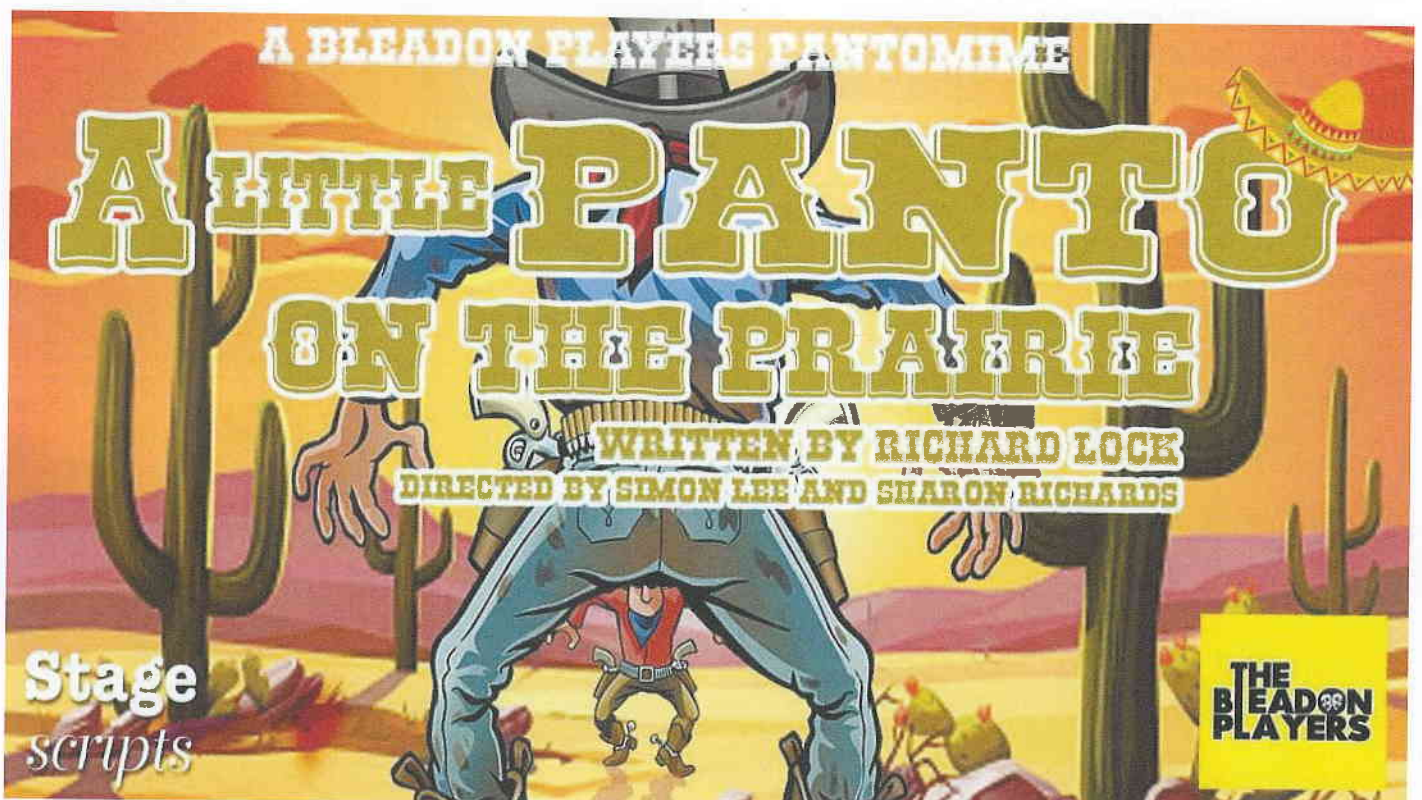
page.

Visitors are welcome for a fee of £10, children are half price when accompanied by an adult.

Members attend the sessions for free.

Don't miss this festive-themed evening of fun and learn a new skill.

For more information, please call Sue on 07535 915582.



Cuttings and their consequences

By Les Masters

Mention “the top of the cutting” to any Bleadon driver and you will immediately be understood to mean the top of the hill winding up from the hospital roundabout. Constructed about 1930, it is only the most recent of four cuttings that have each made a considerable difference to Bleadon.



The first was also a road cutting, carved out of a ridge in the 18th century (this is my guess). It enabled a route out of Bleadon to the east, providing access to the farms at Shiplate, which previously could be reached only by river or by road from the Axbridge direction.

As you climb Shiplate Road past The Veale you have in local terms to ‘go through the rocks’ to reach Wonderstone. This is possible only because men with picks and shovels hacked out the stone until the roadway was low enough for wheeled vehicles to be taken through. I suspect it was win-win situation, with what must have been large amounts of stone carried away for building. In other words the cutting doubled as a quarry.

When you walk through that section you have time to take a good look, and I at least am always impressed by the scale of that enterprise so many years ago. Please do not try to study it while driving, however. For walkers the safest approach is to cross South Hill to



the stone stile near Wonderstone, then walk back towards the village.

The second is not strictly a cutting but a cut, made in the River Axe from South Hill Farm straight through to the area near Bleadon Bridge in the early 19th century. The river had been navigable for centuries as far up as Rackley, just this side of Compton Bishop, but journeys were lengthened by its meanders, one of which curved from the farm round to Hobbs Boat, where the ferry was located, and back towards the village.

Obviously there was no sluice. Instead there was a lock, and the house just across the present bridge was the lock-keeper’s cottage. Coal was brought up river and



unloaded there into a coal yard sited in an old quarry at the beginning of the lane to South Hill Farm.

There was another wharf at Lymphsham in Accommodation Road, bearing the proud name The Lymphsham Coal Company, and the first farm on the Lymphsham side of the river is Wharf Farm. This realignment of the river meant the farmer at South Hill could not reach a large part of his land, so a bridge was built close to the farm.

This bridge was replaced in the 20th century by a steel one manufactured by Dorman Long, a north-eastern company that built Sydney Harbour Bridge, and known to generations of local boys as "the cow bridge". They were not supposed to jump off it, so of course they did just that. There is a public footpath across it, accessible from the farm and from Bleadon Bridge.



Following a road cutting and a river cutting there had to be a railway cutting, which was duly provided by Brunel through the lower part of Bleadon Hill. He spanned it with what we now call Devil's Bridge and plonked a station in the open fields a short distance past the end of the cutting, about midway between Bleadon and Uphill.

Up to then the road from the middle of Bleadon to Purn did not lead through to Uphill but simply served the local farms. Obviously a station without road access was little use to anyone, so from each village a road to it was built. At the foot of what is now the Toll Road there was a level crossing, and as the name implies there was a toll-gate.

The result was, of course, that wheeled traffic could then travel between both villages and beyond, and I suspect that as the 19th century went on it steadily increased. Is it just coincidence that The Anchor opened towards the end of the century, as did The Victoria in Bridge



Road, both on this route? It would be a lovely example of unintended consequences.

It was the rapid increase in motor traffic after WW1 that brought about our last cutting. Somerset County Council realised that the route from Weston to the south had to be radically upgraded, but through Uphill and Bleadon existing roads could not be widened. The solution was to bypass both villages with a much wider and straighter road, which after crossing the Axe replaced the ridiculously tortuous series of lanes leading down to the A38 at East Brent.

Included in this development were bridges over both the railway and the river, and the council houses opposite Bridge Garage, built not long before in open fields, found they had front gardens running down to the new main road.

The Anchor and the properties just beyond Accommodation Road found themselves some feet below the level of the road and a much safer distance back from it, and Facum Lane became a back road, with its village pond no longer needed. These days we all know the effect in the village of a diversion because of road-works or an accident, so let us be grateful to that old council. The consequence of their action was definitely intended.



News from the Queens Arms

By Alan and Kerrie

It's been a busy summer at the Queens Arms and we have had a lot of events and live music. The dog show and the motorbike show were a huge success and we have had some lovely evenings of live music and open mic sessions. Thank you to Mike, Charlie, Pete and the Start of Time for all their hard work.

We have also had some entertaining quiz nights which raised some much needed money for local charities.

We won a Gold Award for the second year running in the South West in Bloom. Thank you to Westhaven School, in Uphill, for the beautiful Jubilee-themed baskets and to Ruth for planting the lovely tubs again. It is a lot of hard work, but it was worth it.

We have got more fun to come in the next two months, including the very popular Pantomime on the 18 December – rehearsals are already under way and it is going to be another fantastic night.

The WI Choir will also be singing at the pub

after their Carol Service in the Church on 16 December. We are also hoping to have a Christmas Quiz in December which Phoebe will be doing. More details on this to follow.

We have got a Christmas Open Mic on 11 December and on Christmas Eve and New Year's Eve we will be having a disco and karaoke.

We will be open on Christmas Day from 11am to 1pm and on Boxing Day from 2pm to 7pm. We will be closed on New Year's Day.

We hope everyone has a lovely Christmas and New Year and we would like to thank all our regular customers for supporting the pub through another year.



Coronation Hall Report

By Betty Paterson

All is looking good at the halls. We have had a few new bookings lately and our thanks go to Robin (Mrs Getty) for keeping things running smoothly.

Our caretaker, Bill Blacklock, is back with us looking after our users and generally keeping an eye on the halls. We would like to thank Kevin Russell for his commitment as caretaker during the summer when Bill was unavailable.

The stage curtains are to be replaced soon as they are getting very old and sad looking with holes appearing here and there.

We are also hoping to have the kitchen in the Coronation hall replaced after Christmas. Getting people to quote for a replacement has been a nightmare but, fingers crossed, we are nearly there.

The Christmas decorations will be making an appearance on 26 November in time for our Christmas market on the 3 December and all the other activities over the Festive Season.

May we wish you a VERY HAPPY CHRISTMAS and a PROSPEROUS NEW YEAR from all on the Coronation Hall Management Committee.



Real Christmas trees for sale

Available from 29th Nov

Open Every day
9.30am – 6pm

Brookfield House,
Bridgwater Road,
Lymsham, BS24 0JT

Mob 07803 242583
Facebook.com/Edengreenery



What's going on at the shop?

by Charlotte House

News

We are delighted to announce that we received a five-star rating from the Food Hygiene Inspectors over the summer - there were only a handful of recommendations, all of which have since been implemented, so we are A-OK!

Thanks to everyone who signed the Book of Condolence honouring her late Majesty Queen Elizabeth.

People appreciated the time and space to sit and reflect on the life and service of such a special lady.

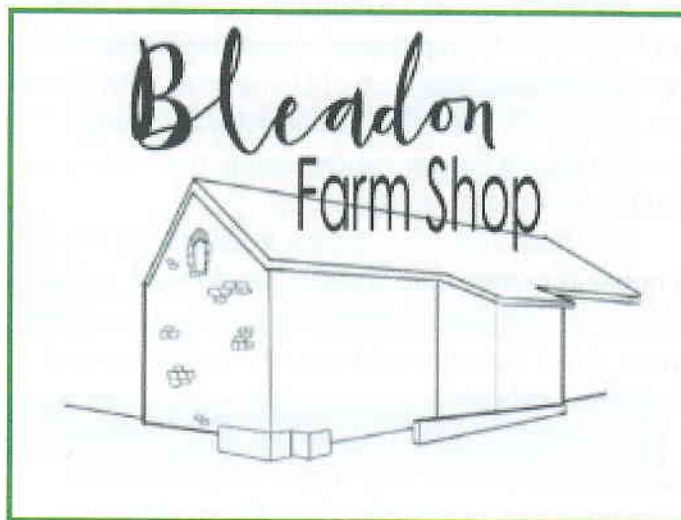
We sent her off with a marmalade sandwich for the journey, a nod to the delightful conversation with Paddington Bear at the Queen's Platinum Jubilee.

Our opening hours have increased in the cafe until 4pm every weekday so that we can provide a welcoming 'warm space' for our customers.

We have set up a book and puzzle swap, just help yourself to something you'd like to read and return it or replace it with another donated book.

A lovely way to save costs and spread the love of reading.

We welcome canine friends after 2pm, so



we'd love to see you and your dog in the afternoon for a cup of tea and piece of cake... oh and a dog treat!

Events

- **T**here is a Wine Tasting Evening on 18 November, proceeds towards the Hutton Dabaso Twinning Association. The event is sold out but will be the first of more Wine Tasting events, we anticipate!
- **C**hristmas is coming in the shop, with people already placing meat orders - do pop in and see Jay to discuss your festive requirements. We are holding a Christmas Craft Fayre on Friday 2 December, between 11am and 3pm, all welcome. There will be craft stalls, festive food and a raffle supporting Crisis at Christmas.
- **O**ur new bespoke House Gin 'Community Spirit' is now launched. You are most welcome to try before you buy!

Meet the team

Post Office clerks: Manshu, Rachael, Tracey, Amanda, Peter and Anne

Shop staff: Kelly, Nikki, Helen, Mir, Lorna, Amy and Deb

Cooks: Bev, Steph, Ali and Jess

Café staff: Annie, Cici, Helen, Maxine, Zaara, Olivia and Mollie

You are guaranteed a warm welcome and we thank you for your custom.

Alistair and Charlotte House

Over 40 Public Living Rooms open

North Somerset Council has worked with numerous organisations and community groups to help set up free Public Living Rooms across the region in direct response to the Cost-of-Living crisis with libraries, community centres, faith groups and many more stepping forward and opening their doors as dedicated warm spaces.

To help find your nearest Public Living Room, a new interactive map is available at [Public Living Rooms \(n-somerset.gov.uk\)](https://www.n-somerset.gov.uk/public-living-rooms). Click on a map pin for more detail including address, opening times and facilities available.

North Somerset Council has allocated over £25,000 in grants to help support organisations wishing to set up a Public Living Room with over £13,500 allocated so far – with more to come as additional warm spaces across the region come on board.

Cllr Mike Bell, Deputy Leader at North Somerset Council said: “Many people in our community face enormous pressure due to the rising cost of living and onset of winter. This is a council that cares about people and I’m proud that we’ve been able to support so many organisations who are now helping run Public Living Rooms at this crucial time. These are welcoming places for you to come, grab a cup of tea, a bit of company and most importantly keep warm this winter.”

In addition to the £25,000 funding provided by North Somerset Council so far, match funding of £2,500 have each been given by Alliance Homes, Bristol Water and Wessex Water to support North Somerset’s Public Living Rooms initiatives.

Cllr Bell continued: “I’d like to thank the organisations who have contributed financially to this great work and helped to set up Public Living Rooms across the area. No one should go cold at any time, and it is disappointing that these schemes are even needed at all. However, North Somerset residents should know that support is here, and we really are in this together to help each other.”

The interactive Public Living Room map is also available to view at <https://www.n-somerset.gov.uk/my-services/north-somerset-together/public-living-rooms-north-somerset> alongside links to maps showing spaces registered with the Camerados <https://camerados.org/public-living-room/> and Warm Spaces <https://www.warmwelcome.uk/#find-a-space> initiatives.

Residents will therefore be able to access up-to-date information about North Somerset spaces that have been registered with one or more of the initiatives.

Key organisations in North Somerset, including North Somerset Council, set up an area-wide Cost of Living working group earlier this year under the umbrella #NorthSomersetTogether. Public Living Rooms are just one of the many packages of measures in place to help residents at this challenging financial time.

For more information about help available including support with bills, childcare costs, housing support, and energy and heating advice, check out www.n-somerset.gov.uk/my-services/benefits-support/cost-living-advice-guidance.

Mark Howe

Gardening Services

9 Malvern Road, Weston

Regular grass cutting

Hedges and trees cut

Fences erected or repaired

GET IN TOUCH TODAY!

01934 413594

07773 272003

Turfing

Fence painting

Power washing

Bus timetable and bin day



50

Worle - WSM Centre - Hutton

Stagecoach West

Timetable valid from 24/04/2022 until further notice.

Direction of stops: where shown (eg: W-bound) this is the compass direction towards which the bus is pointing when it stops

Mondays to Fridays

Saturdays

	0720	0920	0928	1028	1120	1220	1320	1420	1520	1620	1720	1820	1920	0728	0828	0928	1028	1128
Bleadon, Bridge Road (E-bound)	0720	0920	0928	1028	1120	1220	1320	1420	1520	1620	1720	1820	1920	0728	0828	0928	1028	1128
§ Bleadon, The Queens (N-bound)	0729	0828	0928	1028	1128	1228	1328	1428	1528	1628	1728	1828	1928	0729	0828	0928	1028	1128
§ Bleadon, Clovercot (N-bound)	0729	0828	0929	1029	1129	1229	1329	1429	1529	1629	1729	1829	1929	0729	0828	0929	1029	1129
§ Bleadon, Roman Road (NW-bound)	0730	0828	0930	1030	1130	1230	1330	1430	1530	1630	1730	1830	1930	0730	0828	0930	1030	1130
§ Bleadon Hill, Totterdown Lane (W-bound)	0732	0828	0932	1032	1132	1232	1332	1432	1532	1632	1732	1832	1932	0732	0828	0932	1032	1132
§ Bleadon Hill, Purn Lane (W-bound)	0732	0828	0932	1032	1132	1232	1332	1432	1532	1632	1732	1832	1932	0732	0828	0932	1032	1132
§ Bleadon Hill, Burnham Close (N-bound)	0732	0828	0933	1033	1133	1233	1333	1433	1533	1633	1733	1833	1933	0732	0828	0933	1033	1133
§ Bleadon Hill, Brockley Crescent (E-bound)	0733	0828	0933	1033	1133	1233	1333	1433	1533	1633	1733	1833	1933	0733	0828	0933	1033	1133
§ Bleadon Hill, Maidstone Grove (NE-bound)	0734	0828	0933	1033	1133	1233	1333	1433	1533	1633	1733	1833	1933	0734	0828	0933	1033	1133
§ Oldmixon, Broadway Lodge (NE-bound)	0734	0828	0934	1034	1134	1234	1334	1434	1534	1634	1734	1834	1934	0734	0828	0934	1034	1134
§ Oldmixon, Hillside (E-bound)	0734	0828	0934	1034	1134	1234	1334	1434	1534	1634	1734	1834	1934	0734	0828	0934	1034	1134
§ Oldmixon, Winterstoke Road (E-bound)	0734	0828	0935	1035	1135	1235	1335	1435	1535	1635	1735	1835	1935	0734	0828	0935	1035	1135
§ Hutton, Oldmixon Road (E-bound)	0736	0828	0936	1036	1136	1236	1336	1436	1536	1636	1736	1836	1936	0736	0828	0936	1036	1136
§ Hutton, Warren Close (E-bound)	0737	0828	0937	1037	1137	1237	1337	1437	1537	1637	1737	1837	1937	0737	0828	0937	1037	1137



50

Hutton - WSM Centre - Worle

Stagecoach West

Timetable valid from 24/04/2022 until further notice.

Direction of stops: where shown (eg: W-bound) this is the compass direction towards which the bus is pointing when it stops

Mondays to Fridays

Saturdays

	0745	0845	0945	1045	1145	1245	1345	1445	1545	1645	1745	1845	0745	0845	0945	1045
Hutton, Holm Road (S-bound)	0745	0845	0945	1045	1145	1245	1345	1445	1545	1645	1745	1845	0745	0845	0945	1045
§ Hutton, Warren Close (W-bound)	0746	0846	0946	1046	1146	1246	1346	1446	1546	1646	1746	1846	0746	0846	0946	1046
§ Hutton, Oldmixon Road (W-bound)	0747	0847	0947	1047	1147	1247	1347	1447	1547	1647	1747	1847	0747	0847	0947	1047
§ Oldmixon, Hillside (W-bound)	0749	0849	0949	1049	1149	1249	1349	1449	1549	1649	1749	1849	0749	0849	0949	1049
§ Bleadon Hill, Brockley Crescent (W-bound)	0750	0850	0950	1050	1150	1250	1350	1450	1550	1650	1750	1850	0750	0850	0950	1050
§ Bleadon Hill, Burnham Close (S-bound)	0751	0851	0951	1051	1151	1251	1351	1451	1551	1651	1751	1851	0751	0851	0951	1051
§ Bleadon Hill, Burnham Drive (NW-bound)	0751	0851	0951	1051	1151	1251	1351	1451	1551	1651	1751	1851	0751	0851	0951	1051
§ Uphill, Bleadon Hill (S-bound)	0752	0852	0952	1052	1152	1252	1352	1452	1552	1652	1752	1852	0752	0852	0952	1052
§ Bleadon, Anchor Inn (SE-bound)	0754	0854	0954	1054	1154	1254	1354	1454	1554	1654	1754	1854	0754	0854	0954	1054
§ Bleadon, Purn Way (NE-bound)	0755	0855	0955	1055	1155	1255	1355	1455	1555	1655	1755	1855	0755	0855	0955	1055
Bleadon, Bridge Road (E-bound)	0756	0856	0956	1056	1156	1256	1356	1456	1556	1656	1756	1856	0756	0856	0956	1056
§ Bleadon, The Queens (N-bound)	0757	0857	0957	1057	1157	1257	1357	1457	1557	1657	1757	1857	0757	0857	0957	1057
§ Bleadon, Clovercot (N-bound)	0757	0857	0957	1057	1157	1257	1357	1457	1557	1657	1757	1857	0757	0857	0957	1057
§ Bleadon, Roman Road (NW-bound)	0758	0858	0958	1058	1158	1258	1358	1458	1558	1658	1758	1858	0758	0858	0958	1058
§ Bleadon Hill, Hillcote (W-bound)	0759	0859	0959	1059	1159	1259	1359	1459	1559	1659	1759	1859	0759	0859	0959	1059
§ Bleadon Hill, Totterdown Lane (W-bound)	0800	0900	1000	1100	1200	1300	1400	1500	1600	1700	1800	1900	0800	0900	1000	1100
§ Bleadon Hill, Purn Lane (W-bound)	0800	0900	1000	1100	1200	1300	1400	1500	1600	1700	1800	1900	0800	0900	1000	1100

View the rest of the table at <http://journeyplanner.travelwest.info/routes/region/3>



Contact Ellie

Do you want to enquire about advertising? Maybe you have an article you would like to consider for inclusion in the next edition? Contact me at bleadonnewseditor@gmail.com

I may not answer straight away due to other commitments but I will get back to you!

Your recycling and waste collection day is

WEDNESDAY

	recycle for North Somerset	Recycling, food waste and rubbish	Recycling and food waste	Recycling, food waste and rubbish	Recycling and food waste	Recycling, food waste and rubbish	Recycling and food waste
Nov-22		2	9	16	23	30	
Dec-22			7	14	21	29	
Jan-23			4	11	18	25	
Feb-23			1	8	15	22	
Mar-23			1	8	15	22	29
Apr-23		5	12	19	26		
May-23		3	10	17	24	31	
Jun-23			7	14	21	28	
Jul-23			5	12	19	26	
Aug-23			2	9	16	23	30
Sep-23		6	13	20	27		
Oct-23		4	11	18	25		
Nov-23		1	8	15	22	29	

Holly and the Ivy

By Pauline Kidner

Both of these plants that we connect to Christmas are very much valued by wildlife, although we tend to use them for decoration.

The common European holly is often considered by Christians to be an emblem of the crown of thorns worn by Jesus with the berries resembling the drops of blood caused by the sharp thorns.

The berries are quite hard but after a few frosts and wet days, they soften and are a major source of food for birds such as Fieldfares, Redwings, Thrushes and Blackbirds as their usual food source of insects is severely depleted.

The sharp leaves are a very good protection for birds to roost in at night. You will often see holly bushes in graveyards, and this is because holly wreaths with bright berries are left on graves as a remembrance at Christmas, and some berries fall to the ground with the seed inside allowing a new tree to grow.

Ivy is often accused of strangling trees, but they have a separate root system and are just using the tree as a support. In Roman times it was thought to be a sign of fidelity and priests would give ivy as a gift to newly married couples. The flowers of the ivy come out from

September to November and are a very important source of nectar and pollen which is really important to many insects and particularly butterflies and moths larvae.

These are followed by berries which are loved by the Wood pigeon, Black caps and Thrushes - both our own and the migrating ones that arrive for the winter. Many years ago, when Secret World was known as New Road Farm, my father-in-law would always feed ivy to sheep suffering twin lambs disease so it is often thought to have healing properties too.

Secret World Wildlife Rescue will be open for wildlife casualties all the way through December. We would like to thank you all for your support and may you and your family have a happy and healthy Christmas and New Year.

For help and advice ring 01278 783250. Why not visit our web shop for Christmas gifts that will help care for our casualties.



ELBOROUGH FIREWOOD

KILN DRIED
HARDWOOD LOGS

'For a hotter, cleaner burn'

We are a local business, based at the foot of the Mendip Hills, and well known for our Hardwood Logs. Available in crates, dumpy and barrow bags. We deliver within a 15-mile radius of Weston-super-Mare.



07512 196 414



Hedges of the Mendip Hills

by Megan Godley

The Mendip Hills AONB Service are looking to help farmers and land managers to increase the length of native hedgerows across the area. Since this time last year, the Farming in Protected Landscapes programme has funded 2400 metres of hedgerow planting, and hundreds more metres have been funded for management like hedge-laying.

In total nine farms in Cheddar, Hutton, West Harptree, Blagdon, and Priddy have already benefited from support with hedgerows through the Farming in Protected Landscapes programme, with more projects in the pipeline.

The patterns hedges weave in the countryside are a link to the past, as generations of farmers create and maintain boundaries to suit their land.

Some hedges might be as old as the Romans, others overlay banks built as boundary markers in the Bronze Age, and some are older still, carved out of the Wildwood in Man's early years.

Some of these ancient hedgerows can still be found across the AONB, while some exist only as ghostly ridges on the ground, or infield trees that were too big to remove with the rest of the hedge when the field was enlarged. Many of the more regular perpendicular hedges in the Mendip Hills date back to the 1700s and the series of enclosure acts – as do many of the hundreds of miles of drystone walls.

Well-managed hedges can be a tremendous natural capital asset to a farm. They reduce windspeed, lessening soil erosion and crop damage, and provide a shelter for livestock against extreme weather. They stabilise soil with deep roots which hold the soil together and encourage the slow absorption of rainwater.

Roots also play a vital role in storing carbon dioxide. Hedgerow plants absorb and lock away carbon in their growing leaves and branches, but they also send some of the carbon into their roots, and combined with the autumnal leaf drop, soils under hedges can contain up to 57% more carbon than soils in the middle of the same field.

For wildlife, the importance of hedgerows in the landscape is unparalleled. They are vital corridors in the landscape, which species can use to navigate and seek shelter in. They are also often rich in wildflowers, cow parsley, red campion, and hedge mustard are common species to find creeping out from the bottom of a hedgerow. The variety in plants found in a hedgerow allows them

to support a huge density and diversity of invertebrate life.

For bird life, hedgerows provide excellent opportunities for shelter, nesting, and feeding. Sixteen of the nineteen bird species in the Farmland Bird Index are associated with hedgerows, ten of which use hedges as their primary habitat.

The number of bird species, as well as the number of individual birds, tends to increase with the size of the hedge and the number of woody species of plant that the hedgerow is made from.

Having a variety of hedgerow plants that flower and fruit at different times of the year means there is a longer period of abundant food – hawthorn and dog rose are particularly valuable food sources that can last throughout winter. Come Springtime, when birds are beginning to pair up for breeding, trees and taller plants in the hedgerow are important as song posts, from which males attract mates or defend their territory.

If you farm or manage land within the AONB and are looking to increase the hedgerows on your land, or manage them to increase their value for wildlife – get in touch with Megan from the Mendip Hills AONB Service, by email via mendip@mendiphillsaonb.org.uk or phone 01761 462338 to request a free, impartial advice visit to your holding.

The Mendip Hills AONB Service are also working in Partnership with FWAG SouthWest, the National Farmers Union, Somerset Wildlife Trust, and Mendip District Council to run a programme of free sustainable land management workshops across the area – the programme can be found online here (www.somersetwildlife.org/slm-workshops) or request a physical copy by ringing our office.

We are working with the NFU to run an event on the 12 October, providing information on Farm Carbon Auditing and Natural Capital Management. Somerset Wildlife Trust and Mendip DC are running an event on the 23 September looking at green financing, and there are many more to come!



Updated climate action plan to reduce emissions

North Somerset Council

Plans to reduce North Somerset's greenhouse gas emissions and tackle the climate emergency have been approved by North Somerset Council.

After declaring a climate emergency in 2019, the council produced a climate change strategy and action plan to reduce emissions across North Somerset, including those created by council-run buildings and services.

Following the successful completion of several projects identified in the original action plan, an [updated version](#) has been developed to reflect the next key areas of focus.

Executive Member for the climate emergency,



Cllr Bridget Petty, said: "We're working to create a thriving and sustainable North Somerset and our refreshed climate emergency action plan reconfirms the council's commitment to achieve net zero by 2030.

"The extreme weather events of this year show that climate change is here and affecting us already, but it's important to remember there is still time for us to act and the UK is well-placed to set an example to the world in addressing the causes and consequences of climate change."

The council has already carried out several projects to reduce greenhouse gas emissions in North Somerset, including running a solar panel purchasing scheme for residents, replacement of streetlights with LED lighting, funding for energy efficiency projects in care homes, and improved insulation for low-income households.

"Many of the actions needed to reduce emissions can also improve our lives in other ways through co-benefits – for example by improving our health and wellbeing, creating community resilience and reducing costs – and we decided it was important that the action plan update reflects this," added Cllr Petty.

To find out how everyone can take climate action to help create a healthier, happier, greener North Somerset go to www.n-somerset.gov.uk/climateaction.



A well-stocked corner shop, with butchery, cafe and Post Office... not bad for village our size!

Post office:

Mon-Fri, 9am-5pm
Saturday, 9am-1pm

Opening times:

Shop:

Mon-Fri, 8am-5pm
Saturday, 9am-2.30pm
Sunday, 9am-1pm

Cafe:

Mon-Fri, 8am-5pm
Saturday, 9am-2.30pm
Sunday, 9am-12.30pm

Bookings:

Ring 01934 815584 to book lunch or an event in our 'top room'.

Date for your diary:

Friday 2 December
11am-3pm
Christmas Craft Fayre

Top buys:

Fresh fruit and veg, fresh fish from Cornwall, homemade cakes, House Gin for just £32, cards and stationery.

Bleadon's GOLD makes Mercury

Weston Mercury

A Somerset village has scooped gold in a coveted regional gardening competition.

To help make Britain more greener and cleaner, a prize draw for the annual South West in Bloom event saw Bleadon bag gold.

The top prize is only awarded to entrants meeting the highest standards in horticulture, care for the environment and community participation.

It was presented to the Bleadon in Bloom group that has worked hard to create a community allotment and polytunnel, with this year's theme being the Platinum Jubilee.

Work to scoop the top gong has taken three years of dedicated commitment, the group said.

Bleadon was also awarded as overall winner in



the village category where residents took home the Mary Mortimer Trophy.

The Queen's Arms pub also secured a gold award for the second year running for outstanding flower displays. Judging took place in July in Haselbury Mill, in Crewkerne.

Budget pressures remain

North Somerset Council

Among the financial measures, the Chancellor declared that income tax bands will be frozen for an additional two years to 2028, that the energy price cap would be revised upwards and extended for an extra year to April 2024, that the national living wage would rise for people aged 23 and over in April and that state pensions and a number of benefits would rise in line with inflation at the same time.

He also announced that councils would be able to raise council tax next year by up to five per cent including up to two per cent ring-fenced for adult social care.

Cllr Steve Bridger, Leader of the Council, said: "While we won't know the detail of our local government settlement from central government until just before Christmas, we do know that the scale of the financial challenge that we and all other councils face is such that today's news won't touch the sides.

"The Autumn Statement signals a continua-

tion of the 12 years of austerity that we have already navigated and it's inevitable that we will have to make some tough choices as we set our budget for the year ahead.

"We face continuing inflationary cost pressures, pay and stretched staff resources at the same time we are seeing rising demands on our services from more residents being pushed into poverty.

"However, we are committed to protecting our services for the most vulnerable residents in our communities wherever possible and they remain our priority.

"We will continue to work with our officers across the organisation to develop proposals to close our current £17m gap for 2023-24 for consideration by councillors in the new year, before the final budget and council tax levels are agreed in February."



Weston Croquet Club

By Jan Scotchmer

We have had a good season this year. We re-joined the league and had nine teams playing in the South West.

All our teams played well and had some good results. Our Golf Croquet Central B team won their league and played in the semi-finals at Cheltenham. As we were playing against Cheltenham they had an advantage of the grounds. However we did very well, just losing out to them.

They gave us a wonderful lunch and were good hosts. Also our Association Croquet B team won their matches and played in the finals against Bristol at Swindon Croquet Club, where they won 6 – 1. A very good success!

Our inter-club matches were enthusiastically competed and went down well in the club. The Blues won the Red, White and Blues match and the gents won the

Ladies v Gents match.

Our trophy matches had good turn outs. Gerry Williams won the Daphne Holland match, with John Stutchbery as the runner up. Penny Nicholson won the Ladies Cup and Garry Searle the Gents Cup. Graham Cole and Jan Scotchmer won the Pairs Saturday morning competition.

We hosted Stony Stratford to a day's competition and won for the first time. They were great fun and we had a wonderful lunch put together by Sue with help from Mary and other club members.

As for the Association Croquet, we had a couple of members wishing to learn the game and they played in the Tim Kelly match. Mike Dudley and John Stutchbery won, so congratulations to Mike for joining in.

Jan Scotchmer won the Short Croquet competition. I think this shows that we have a lot going on in our club, apart from Tuesday and Thursday roll ups.

We are a friendly club and would welcome anyone wishing to join or have a go at a wonderful sport.



Professional Services for
PRINTING
DESIGN
GRAPHICS
BOOK PRODUCTION

Same day response for all quotes and enquiries.
Friendly, local and independent.



01934 635916

www.taylorthorneprint.co.uk

Unit 2, Glencoe Business Park, Warne Road, Weston-super-Mare, Somerset BS23 3TS

MOBILITY EQUIPMENT

Scooters
Powerchairs
Wheelchairs
Stairlifts
Rise & Recline Chairs
Walking Aids / Bathroom Aids
Pressure Cushions
Incontinence Products
Cosyfeet Slippers & Shoes
We Service & Repair Scooters etc

0% finance available on selected scooters

Wilmott mobility

6 Pages Court
High Street
Yatton
BS49 4EG

Ample free parking but if you cannot get to us
we are happy to come to you!

Tel: 01934 838363
www.wilmottmobility.co.uk

Horticultural Society's Summer Show

by Libby Boucher

On Saturday 3rd of September Bleadon hosted its 46th annual Summer Show at the Coronation Hall.

Despite the recent heatwave local competitors managed to produce a fine array of cut flowers, vegetables and fruit (with silverware won by Antoinette Welch, Steph Rhodes, Otty Pocklington, Steve Hartree and Tony Pettitt).

More summer colour was demonstrated in the floral exhibits where Lindsay Ireland and Tanzi Harris-Parkinson received the top prizes with exhibits depicting; living by the sea and autumnal colours.

Many visitors came to enjoy the show and as well as viewing a wide selection of homecraft (where the chairman's cup was awarded to Libby Lockyer), visitors got to indulge in beautiful homemade cakes.

The juniors also got to take silverware home with Edward Birtles taking home the cup for most points overall for those aged 5yrs and under, Rosie Presburg for those aged 6-11yrs and Ben Birtles for those aged 12-15yrs.

Thank you to everyone who supported our village show and we look forward to the Spring show which is to be held on Saturday March 4 2023.

We are holding a Quiz and Social with potluck supper on Tuesday 20 December at 7.30pm in the Coronation Hall. Tickets cost £2.50 and should be bought in advance by calling 07801 386477.

Dates for your diary:

Quiz and Social: Tuesday 20 December at 7.30pm.

'Flowers in Norway' by Paul Oaten: Tuesday 17 January.

'Somerset— The Moorland Way' by Peter Triggs: Tuesday 21 February.

Annual Spring Show: Saturday 4 March



Top to bottom: Otty Pocklington, Lindsey Ireland, Antoinette Welch and Libby Lockyer.



Woodspring Ladies Probus

By Alison Hillyer

always welcome to attend meetings as visitors too!

The Woodspring Ladies Probus Club meets at 10.30am on the first and third Tuesday morning of each month, with a break in August.

Meetings are held in local venues.

The club offers friendship and is open to all retired and semi-retired professional and businesswomen.

A variety of speakers give talks, often illustrated with slides or other visual aids.

In addition, coffee mornings, excursions, lunches and afternoon teas are arranged throughout the year for members.

Non-members are

For more details, please contact:

Alison Hillyer
01934 815407
alhillyer@aol.co.uk

Otty Pocklington
01934 813078
ottypock@btinternet.com



Age UK

It is vital to keep moving safely this winter. You can stay active in Bleadon with Tai Chi sessions from Age UK Somerset.

Specially designed for people over 60, the programme is based on a form of Tai Chi called QiGong Shibashi, which is made up of 18 mindful movements for your physical and mental wellbeing. This fun and friendly group meets Tuesdays at 10am at Bleadon Community Hall - bookings advised.

If for any reason you can't get out, there's no need to miss out on your favourite exercise class - you can join in from the comfort of your own home with Age UK Somerset's online classes.

Choose from Yoga, Tai Chi and Pilates. For more information or to book your place contact:

01823 345624 or email ageingwell@ageuksomerset.org.uk
Alternatively visit our website at ageuksomerset.org.uk/ageingwell

BLEADON VILLAGE MARKET

Dates for 2023

January 21 st	15 th July
February 18 th	19 th August
March 18 th	16 th September
April 15 th	21 st October
May 20 th	18 th November
June 17 th	2 nd December

Find Bleadon Village Market on Facebook, Instagram and www.bleadon.org.uk/market

Strawberry Line Tea Rooms

16 Woodborough Road, Winscombe BS25 1AD
07748 155491 Find us on Facebook



Bookings now being taken for:

FREE hire of the tea rooms

Between 15-40 guests for celebrations.
Sundays noon until 3pm
Afternoon tea at £17.50 per person
Available 11 and 18 December

2023 bookings now being taken.

Our Christmas afternoon tea

1-22 December
Monday-Saturday, 11am-3pm
Festive sandwiches, mini Christmas cake, stollen, mince pie, cream tea with scones, jam and cream and homemade cake.
£17.50 per person, all dietary requirements catered for.



Private and corporate buffets

Just £9.50 per person, £10 delivery or collect.

Join us at the Winscombe Late Night Shopping on December 6, 5-9pm.

Crafters tables available. £12.

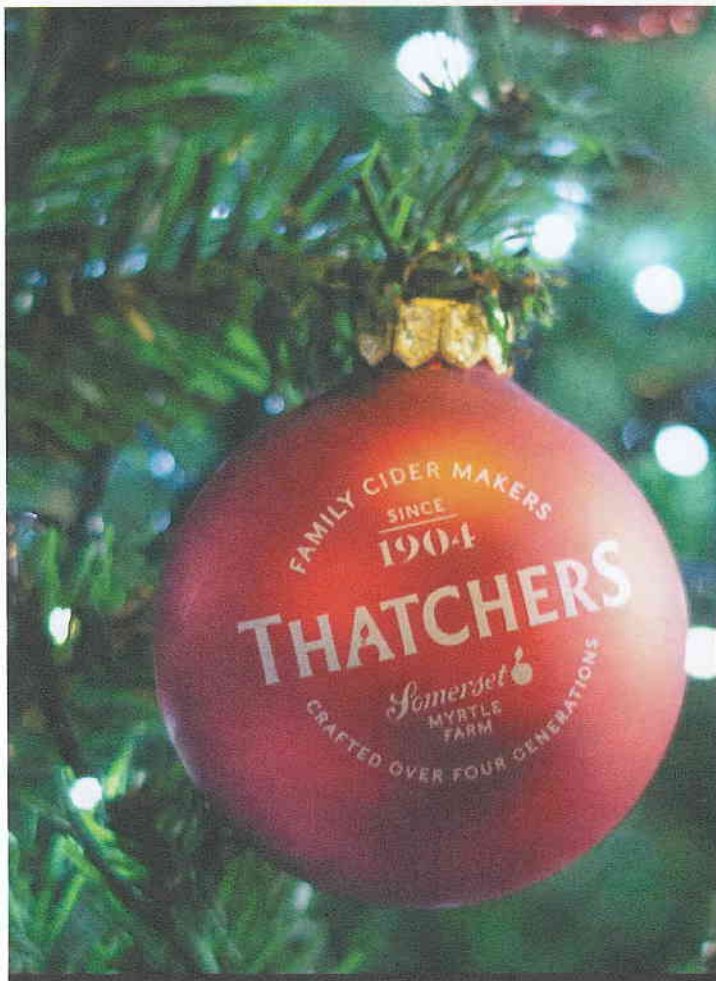
Puzzle page answers

R	O	M	A	N	I	A	N			S		B
I		I		O		V		W	A	T	E	R
V	O	X	H	U	M	A	N	A		E		I
E		T		N		T		S		A	X	E
R	O	U	T		R	A	C	H	E	L		F
		R		C		R		I				L
T	R	E	M	O	R		K	N	O	T	T	Y
S				F		H		G		A		
U		S	O	F	T	E	N		O	D	E	S
N	E	W		E		R		S		P		I
A		E		R	O	M	A	N	R	O	A	D
M	E	A	N	S		I		A		L		E
I		R			S	T	O	P	P	E	R	S

**Many thanks to all
contributors and advertisers
for your ongoing support.**

WHAT'S ON IN BLEADON?

Coronation & Jubilee Halls Supervisor	Bill Blacklock	01934 813031	07747 801753	
Coronation & Jubilee Halls Bookings	Robin Flavell	01934 812218	07724 010715	bleadoncoronationhalls@gmail.com
Youth Centre Bookings	Keith Pyke	01934 813127		keith.pyke@btopenworld.com
Church Room Bookings	Sara Hughes	01934 811008		sara.hughes@btinternet.com
Monday 9.30-10.30am Jubilee Room				
Yoga	Cheri		07717 290708	info@uniquebalance.co.uk
Monday 1.15-4.30pm Coronation Hall				
Bridge Club	Doug Norfolk	01934 812128	07547 163862	dougn@btinternet.com
Monday 7-7.50pm & 8-8.50pm Jubilee Room				
Aerobics	Marie Keele	01934 270853	07939 038071	mariekeele@hotmail.co.uk
2nd Monday 7.00pm Coronation Hall				
Bleadon Parish Council	Kirsten Hemingway (Chair) Bruce Poole	01934 815540	07710 098804	kirstenhemingway@bleadonparishcouncil.co.uk parishclerk@bleadonparishcouncil.co.uk
3rd Monday 7-10pm Coronation Hall				
Holistic Therapy	Debbie Thorne		07905 537118	debbiethorne37@hotmail.com
4th Monday 7-9pm Coronation Hall				
Shamanic Meditation	Shaylan Wilde		07825 678751	wilde.spirit@outlook.com
Tuesday 10-11am Jubilee Room				
Tai Chi (over 60s)	Age UK	01823 345626		ageingwell@ageuksomerset.org.uk
Tuesday 10.30-12.30 Coronation Hall				
Art Class	Tina Dodd	01934 843660		sandtdodd@btinternet.com
1st, 2nd, 4th & 5th Tuesday Sept-May 7.30-9.30pm Coronation Hall				
Photographic Group	Trevor Hartgroves Mark Frisby	01934 239011 01934 812573	07796 693032	t.hartgroves@sky.com marknfrisby@yahoo.com
3rd Tuesday Oct-Jun 7.30- 9pm Coronation Hall + Spring & Summer shows				
Horticultural Society	Libby Boucher Rose Benjamin		07966 563495	libbyboucher2003@gmail.com
Tuesday 7.30 - 9pm Jubilee Room				
Women's Institute Choir	Bev Riddell Maggie Heath	01934 811218 01934 813050	07970 475626 07761 102934	riddell2en@btinternet.com
Tuesday 2.30-4.30pm (Sept-May) Friday 7-9pm Jubilee Room				
Short Mat Bowls	Kevin Barrett	01934 811267	07855 225049	kevinbarrett240@btinternet.com
Wednesday 10-11am Jubilee Room				
Tai Chi	Rachel Jelbert		07760 663614	rachel@equilibriummeditation.co.uk
Wednesday 11.30am-12.30pm Jubilee Room				
Stay Strong, Stay Steady	Age UK	01823 345626		ageingwell@ageuksomerset.org.uk
Wednesday 4.45-5.30pm Jubilee Room				
Dance with Georgia	Georgia Forte		07413 171714	dancewithgeorgiak@gmail.com
Wednesday 7-8pm Jubilee Room				
Pilates	Corinne Mutlow		07919 532960	coz@cmutlow.com
Wednesday 7.30pm + shows in January, May & September				
Bleadon Players	Peter Gibbon		07859 001468	peter@mpgifa.co.uk
Thursday 9:30-11:30 Term times Coronation Hall				
Babies & Toddlers Group	Sophie Macey			Facebook group: Babies & Toddlers in Bleadon
Thursday 10-12noon Jubilee Room				
Bleadon Art Group	Stevie Rhodes	01934 813497		
Thursday 6.15-7.15pm Jubilee Room				
Yoga	Sayeeda Alam		07725 901810	info@sadayoga.co.uk
1st Thursday 7.30pm Coronation Hall				
Weston Music Society Concert	Jo Lucas	01934 812759		no emails
2nd Thursday 7:30pm Coronation Hall				
Women's Institute	Elaine Mellor (Secretary) Michelle Harper (President)		07854 628664 07780 688830	bleadonwi@hotmail.co.uk harper.a5@sky.com
3rd Thursday 7.30pm Coronation Hall				
Bleadon Coronation Halls Management Committee	Betty Paterson (Chair) Ian Gibson (Treasurer) Kevin Barrett (Secretary)	01934 812183 01934 814261 01934 811267	07855 225049	gilbet.paterson@btinternet.com igibson6@sky.com kevinbarrett240@btinternet.com
4th Thursday 7.15 - 9.15pm Jubilee Room				
Bleadon Sugarcraft Club	Sue Dennelly		07891 996707	bleadonsugarcraftclub@gmail.com
Friday 9.30-10.30am Jubilee Room				
Pilates	Emma Hunter		07787 563775	emma@ehsportstherapy.com
Friday 2-4pm Coronation Hall				
Friendship Group	Gordon Brown	01934 811926		no emails
3rd Saturday 9am-12.00pm (both halls)				
Bleadon Village Market	Jo Jones	01934 812370		jojonesbleadon@tiscali.co.uk
YOUTH CENTRE				
Monday 10:30am-12:30pm	Recorder group (U3A)	Louise Harwood		harwoodlouise@hotmail.co.uk
Tuesday & Friday 5:30pm	Tricky Paws	Carrie-Anne New		trickypawsuk@gmail.com
Tuesday 8.30pm	Dance the Night Away	Sharon Insley	07502 285547	
Wednesday 7-10pm	Veterans Table Tennis	Ann Sandford		ann@sandford-ca.co.uk
Thursday 7-9pm	Youth Club	Keith Pyke	01934 813127	keith.pyke@btopenworld.com
CHURCH ROOMS				
2nd & 4th Monday 10:00am	Craft & Chat	Sara Hughes	01934 811008	
Tuesday 5:30pm	Brownies	Jacqui Hall-Scott	07730 498371	j.hallscott@btinternet.com



WELCOME TO MYRTLE FARM.

HOME OF THATCHERS CIDER



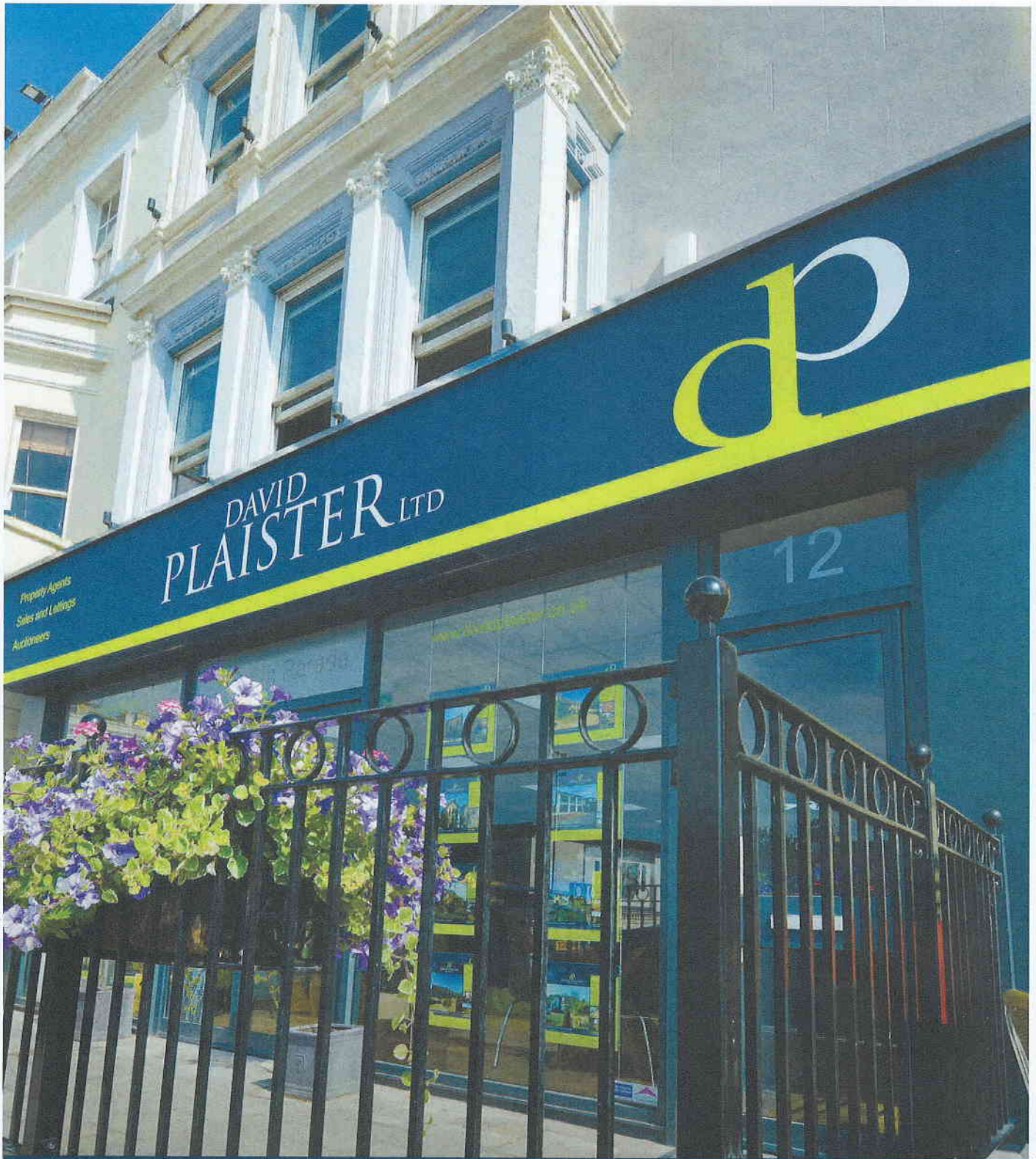
Experience our complete range of ciders here at Myrtle Farm. Try our traditional ciders and explore our exclusive, award winning Cider Barn collection. Or join us at the Railway Inn for some delicious food and a friendly atmosphere.

Please check our website for opening times.

Thatchers Cider Company,
Myrtle Farm, Sandford, Somerset,
BS25 5RA.
www.thatcherscider.co.uk/myrtle-farm
Tel: 01934 822862

EST. 1904
THATCHERS
— THE FAMILY CIDER MAKERS —

Railway Inn,
Sandford, Somerset, BS25 5RA.
Visit: www.therailwayinn.com
Tel: 01934 611518



Property Agents
Sales and Lettings
Auctioneers

DAVID
PLAISTER LTD



12



DAVID PLAISTER

PROPERTY AGENTS | SALES & LETTINGS | AUCTIONEERS

01934 815053

www.davidplaister.co.uk