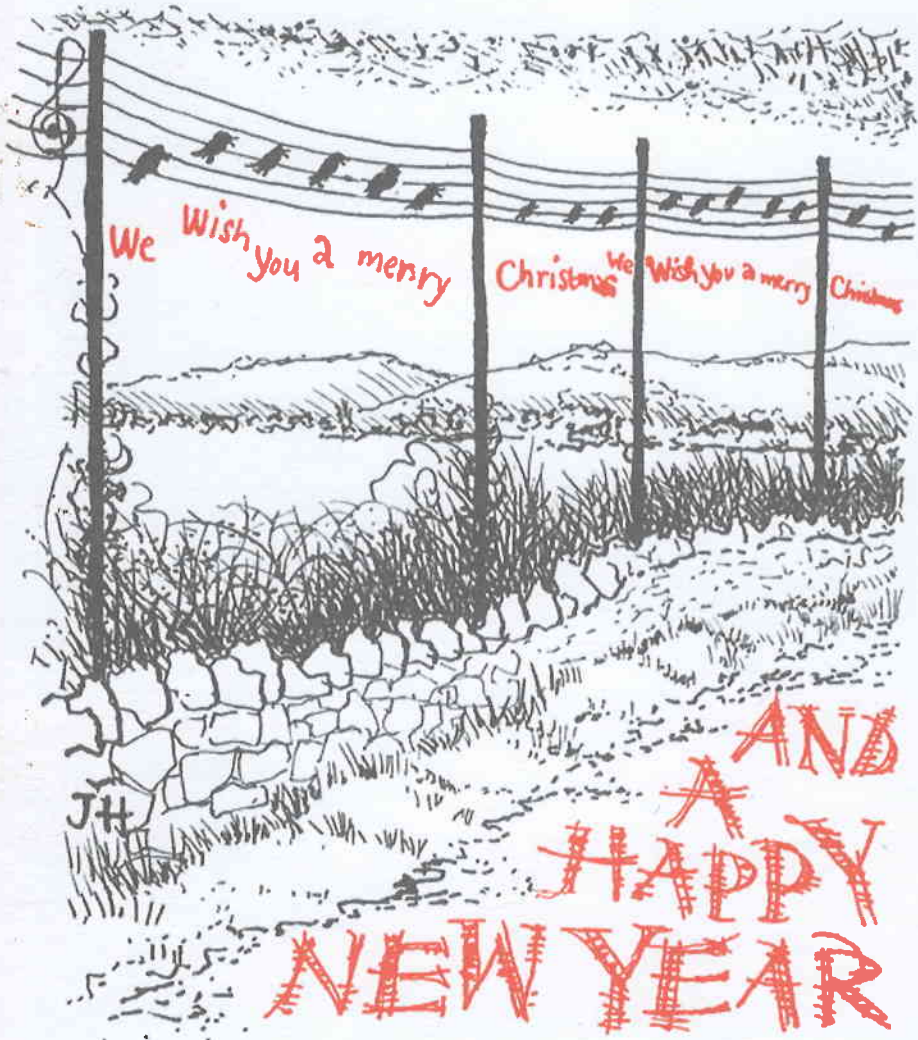


BLEADON



VILLAGE NEWS 71

Bleadon Village Monthly Market

Local Produce. Seasonal Veg. Bread. Cakes. Cheese.
Eggs. Preserves. Honey. Garden & House Plants.
Crafts. Books. Bric-a-Brac. Refreshments. Fair
Trade. And Much More. Always Something New.



Saturday 9^{am}-12.30^{pm}

Dates: Jan 20, Feb 17, Mar 24,
Apr 21, May 19, June 16

Coronation Hall, Bleadon

01934 812370 to book a stall
at this popular monthly market

THE PARISH COUNCIL

| | | |
|--------------------------------|---|-------------|
| PENNY SKELLEY [CHAIRMAN] | 'MENDIP CROFT', CELTIC WAY, BLEADON. | TEL. 815331 |
| PENNY ROBINSON [VICE CHAIRMAN] | 1, THE VEALE, BLEADON. | TEL. 814142 |
| RAY HICKS | 'FIDDLER'S VIEW, HILLCOTE BLEADON HILL. | TEL. 811993 |
| MALCOLM PERRY | 'WESTFIELD', 1 THE BARTON, BLEADON. | TEL. 813940 |
| MARY SHEPPARD | 'LITTLEWOOD' BRIDGWATER RD., LYMPHAM. | TEL. 812921 |
| KEITH PYKE | 8, WHITEGATE CLOSE, BLEADON. | TEL. 813127 |
| CLIVE MORRIS | 20, BLEADON MILL, BLEADON. | TEL. 811591 |
| JUSTIN HARVEY-BENNETT | THE BEECHES, CELTIC WAY, BLEADON. | TEL. 811373 |
| ROBERT HOUSE | | |

The Council meets on the 2nd Monday of the month at 7.30pm, in the Coronation Hall. An agenda is published on the Parish notice board, and any Parishioner who wishes to, may attend these meetings. If there is a particular issue you would like to raise, could you please let the Parish Clerk know in advance and at the latest by the Friday immediately preceding the meeting. This will give him the chance to collect the most up to date information available.

THE PARISH CLERK TO WHOM ALL CORRESPONDENCE SHOULD BE ADDRESSED IS:-

BRUCE POOLE, 'THE CHIPPINGS', 21 STONELEIGH CLOSE,
BURNHAM-ON-SEA, SOMERSET TA8 3EE
TEL. 01278 787555 or e-mail:bruce.poole2@btopenworld.com

This Village Newsletter is published four times a year, March, June, September and December. Date sensitive material and publicity notices should reach the Editor well in advance of the event as a definite publishing date cannot be guaranteed.

The Deadline for the next issue is 17th February 2007

Our aim is to provide a copy of this magazine free to every household within the Parish of Bleadon. Those who live outside the Parish may be able to obtain a copy from the Village shop or the Church porch. I should like to thank all those who help with the distribution of the magazine and I hope I can count on your future support. If there are others out there who would like to help please let me know (01934 814142).

Unless otherwise stated the opinions and comments expressed in this magazine are those of the contributor and not of Bleadon Parish Council. Anyone who has a comment to make on the content of this publication or has a contribution for inclusion, should send it to :-

Mrs. Penny Robinson, 1, The Veale, Bleadon. BS24 ONP
Tel. 01934 814142 | e-mail : penny.rob@btopenworld.com

Keep up to date with the Parish Council news and to see this magazine online go to...

www.bleadonparishcouncil.gov.uk

Chairman's Report

My report is being written on a short, dark and cold winter's day, but with great optimism for our sound and prospering village. Much remedial work is continually underway: the Veale has been resurfaced and repaired; the Churchyard has been cleared of brambles and tree suckers and the path resurfaced; the willows in Bridge road have been pollarded; further improvements have been achieved in the playground and youth club areas and, at the request of dog owners and villagers, four dog bins are being sited in appropriate locations. The overall tidiness of the village is much improved too thanks to the conscientious work of our Village Ranger.

The number of planning applications continues to grow. The Parish Council holds site meetings for almost all applications and our knowledge and insight of the minutiae is ever increasing. Most recently, an initial request has been made to establish a Croquet Club in the village and this has our firm support. We welcome the plans and very much hope that the Club will raise the necessary funding for the project and enable villagers to join the Club and enjoy further "live sports" here in Bleadon.

An exciting plan entitled Bleadon Village Community Space Improvement has been developed, which aims to improve greatly the areas behind the Halls and to link the area behind the Youth Club with the grass area to its side. We now hold responsibility for this area which encompasses the heart of the village. These improvements are being funded jointly from the "Sparkplug" programme and by the Parish Council; the scheme is explained further in this Village News. In addition, and although its development is not lead by the Parish Council, the Village Plan holds promise for us all and we continue to encourage and support the committees in their work towards its completion.

The Youth Club continues to prosper under the guidance of its new Leaders. They have innovative plans for fund raising and future activities for the growing numbers of young members. I am also pleased to report that our Post Office has heard nothing on the possible loss of the Government subsidy; we would certainly fight very hard to keep our Bleadon Post Office.

Finally, I wish to congratulate our Parish Clerk on gaining his higher educational certificate in Local Policy Administration and we wish him every success in the further advanced training that he is undertaking.

The Annual Parish Meeting, in the new format initiated in 2006, will be held in the Coronation Hall in April 2007. This is the most important meeting of the year for the Parish Council and I hope that many of you will attend. May I wish you all a Happy Christmas and a healthy New Year.

Penny Skelley, Chairman Parish Council

HEARING SERVICES

R Gethin RHAD MSHAA

40 Meadow Street, Weston-super-Mare

01934 620376

Home Visiting Service Available

Fed up fiddling about with troublesome **home computers**?
Simply want the things to work properly?

PLEASE RING US - WE WILL HELP

HOMELINE technology

Call 0870 240 6062 (Standard national call rate)

Subscription entitles you to:

UNLIMITED telephone support - we solve most computer problems over the phone.

FREE annual maintenance visit.

30% OFF home engineering visits.

FREE advice on equipment - we'll even buy it, deliver and set it up for you.

FREE high-risk virus warnings.

FEATURE FIREPLACES

Everything for your Fireplace and Chimney

• GAS • ELECTRIC • SOLID FUEL •

Site Surveys, Professional Advice
Design, Manufacture and Installation

Large Showroom with Working Stoves & Fireplaces

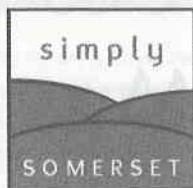
Specialists in High Efficiency Fires

10 minutes from M5 Junction 21 - *Easy Parking*

Weston Super Mare (01934) 628142

www.feature-fireplaces.com





A great way
to spend
a day or evening out

*Published Diary of Events & Excursions- Minibus Hire- Tailored Special Occasion
Excursions- Days at the Races- Cricket- Somerset Uncovered - Mysteries of Somerset
- Picnics- Golf Days- Bath (Roman Baths/Shopping) - Music Events- Shows &
Festivals- Sporting Events & Activities.*

Why not call us on **01934-812414** or **07766-713342** for further information or a brochure; email info@simplysomerset.com or visit www.simplysomerset.com

" IT'S THE ONLY WAY IN THE VILLAGE"

STEPHEN & CO.

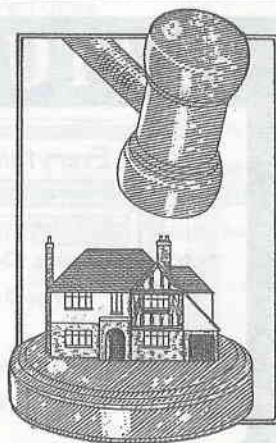
CHARTERED SURVEYORS

01934 - 621101

Professional Advice
on all property matters

Chartered Valuation Surveyors
Auctioneers
Estate agents

(Next to Town Hall)
Weston-super-Mare BS23 1UP
Fax: (01934) 621519
E-mail: post@stephenand.co.uk
www.stephenand.co.uk



Bleadon Village Community Space Improvement

By the time this Village News is published I hope that you will have noticed the work going on around the youth club and Coronation Hall. An explanation is in order.

It was late summer when, through Katy Koo at North Somerset Council, I heard about the Sparkplug Programme operated by the Centre for Public Innovation. This is a regional funding organisation that believes in a simple process of encouraging local communities to change things for the better. Most importantly, up to £4000 can be offered in grant funding.

So it was late September when I found myself amongst a group of around 25 other like-minded people at a day workshop at Brunel's Temple Meads station. We spent the day putting together our individual project proposals. In the afternoon we each took our turn to present our three-minute business case to the panel of three from the Government Office South West. A bit like Dragons' Den, but without the piles of cash!

I'm pleased to say that I walked out with a promise of £4000 funding. The only proviso was that Bleadon had to at least match the funding and the work has to be undertaken within four months.

So what did I have in mind for this pot of money we had been offered?

The project

A strip of land behind the Bleadon youth club and Coronation Hall has long been neglected. Despite this asset being at the heart of the village it has been allowed to become overgrown and inaccessible to all except mischief-makers.

The aim is to create a welcoming space that is accessible, useful, safe and appreciated by the community old and young alike.

Catalysts for change

A number of recent events have created an opportunity for improvement to this important part of the village:

- The parish council has acquired responsibility for the small piece of open space in front of the public toilets. This grassed area was previously managed by North Somerset Council. Now the parish council has the opportunity to make better public use of the space.
- The new management and leadership at the Bleadon Youth Club has revived a failing asset and brought a fresh enthusiasm. There is a real drive to make this important asset appreciated and welcomed within the community.
- The Probation & Community Service have given us over 400 hours of labour over the past year to refurbish the youth club and clear the derelict land around the club. The value of this work is in excess of £2200.
- The Sparkplug Programme has granted £4000 to our community to kick-start the process of improving our open space. We have just four months in which to effect the change.
- Marshalls have donated over £2070 worth of paving blocks for improvements to the landscaping around the youth club. Hanson are giving us £800 worth of sand on which to lay the blocks.
- The parish council now employs a village ranger to manage and maintain its open spaces.

We want

- A community space that is open and accessible to all
- Improved appearance of this central part of the village
- Landscaping that has safe surface areas suitable for recreation and social inter-action
- Good lighting to provide security

Bleadon Village Community Space Improvement cont.

- An open and clearly visible space that discourages anti-social behaviour
- A feeling of safety within the space
- Somewhere for young and old to socialise, learn and inter-act
- Greater use of this space by the people of the village and our visitors
- A litter and graffiti-free environment
- A garden and wildlife area for the Brownies and Guides to develop and use
- A level of security that will discourage anti-social and criminal behaviour.

Steps to success

The Sparkplug Programme encourages local people to solve problems in their own communities. It accepts that it's people with energy that makes things work in a community.

That process has already started;

- The youth club leaders and management committee are working with its young members on ideas for improvement and fundraising.
- The Brownies and Guides are enthusiastic about working with the ranger to develop a garden and wildlife area.
- The Coronation Hall management committee is looking to improve security and access to the rear of the hall
- The parish council is providing match funding and a commitment to a medium-term improvement plan for the area
- Marshalls has donated 200 sq mtrs of paving
- The Bleadon Horticultural Society will be encouraged to help with the planting

How are we going to fund all these improvements?

The £4000 funding from the Sparkplug Programme is our pump primer.

We have promises of additional funding support from:

The Parish Council of £4000

Coronation Hall management committee of £2000

Bleadon Youth Club management committee of £800

What do we plan to get for our money?

- 200 sq. mtrs of block paving laid. To provide attractive, all-weather and multi-use paving to the side and rear of the youth club. Providing visual and physical linking to the rear of the Jubilee Room and the public toilets. Allowing us to develop an integrated and attractive area in the centre of this community space.
- CCTV coverage of the area around the car-park, youth club, Jubilee Room, part of the play area and toilets. With four high-definition cameras providing 24/7 recording onto DVD. The system can be expanded in the future with the addition of up to four more cameras if required.
- Easier access to the youth club via low-rise steps at the front and side. Making the building far easier for all to access..
- New fencing around the Jubilee Room. Providing an open and attractive aspect with the added benefit of better security at the rear of the Coronation Halls.
- Improved lighting to the rear of the Jubilee Room and around the youth club. Adding security and safer year-round use of the area.
- Two round picnic tables, together with some bench seating and play equipment for social interaction and development.



*The Perfect Place
To Visit*



so much more than a Garden Centre

Sanders Gardenworld, Bristol Rd
Brent Knoll, Somerset, TA9 4HJ

Tel: 01278 761111

Fax: 01278 761110

www.sandersgardenworld.co.uk

QUALIFIED ELECTRICIAN

(EST. 1995)

Steve Insley

WSM 812709

07971 413603



*No Quotation Charge
No Call Out Charge
No Job Too Small
No Obligation - No VAT*

Electrical Installation Work (Minor Works Only)

- Security Lights • Extra Lights • Extra Sockets • Telephone Extensions •
- Replacement Fittings • Door Bells • Fault Finding ... Etc. Etc. •
- Full Apprentice Served JIB Graded Electrical - City & Guilds - 16th Edition Regs •

Lympsham Manor Livery

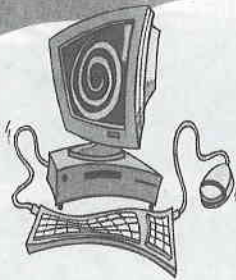
Rectory Way, Lympsham

Stables now available in the heart of Lympsham providing a safe, comfortable and friendly environment for your horse or pony.

Outdoor arena 60m x 20m. Also offering:

- DIY, part or full livery,
- All year round grazing.
- Access to and use of off road tracks,
- Hay and straw and other supplies readily available on site,

Please call Sally to view or book a place on 07789 072433 .



PC Problems, Upgrades, Internet connections

*No callout fee,
7 day local service*

*Get your computer fixed on site, at your convenience.
Very reasonable rates
Fully qualified*

PC Doctor

Tel: 01934 811557
Mobile: 07867 642 542

petpals 
your best friends friend

We visit to feed, walk & play with your
pets, in their own safe environment with
familiar sights and smells



Home Boarding

your dog can stay with one of our
families while you are away

Visit: www.petpals.com

ALL PETS CATERED FOR

- Dog Walking
- Cat Feeding
- Pet at Home Day Visits
- Family Home Boarding
- Fully Insured



Tony or Diane 01934 815060

Email: weston@petpals.com

Bleadon Village Community Space Improvement cont.

- Improved landscaping with low maintenance planting. Developing a greener and more attractive heart to the village.
- A garden area for young people to play and learn.

Depending on funding, sometime we hope to install play sculptures and an interpretation panel. This is our community canvas on which we can continue to develop in the future. I hope that this is just the beginning of an improved heart to our village.
Enjoy.

Keith Pyke

Bleadon Post Office and Country Stores and Tiffin Coffee House

It has been another interesting year with the prospect of an even better one following quite a few changes at the shop. We hope you like our extended range of vegetables many of which are organic. Andrew has found many new and interesting lines which include some for special diets (diabetic, gluten free etc.). We held an apple juice tasting on National apple day, which proved very popular so we intend to carry on this theme with tastings for cheese and other local produce on the way.

Tiffin has seen some staff changes- Jenny has brought a wonderful reputation for breakfasts but we were particularly sorry to lose Cynthia who has returned to her antipodean roots to continue with University. Sophie now joins us from up state New York!

We are very excited though about having more space at Tiffin - the upper room can be reserved through Mandy for birthdays, meetings, discussions or even private classes. One suggestion is to hold a computer class for beginners (and we have an internet access point).

We were proud to have had the chance to provide the Harvest Supper at the Coronation Hall this year, and remember us if a similar occasion crops up!

Finally, we are thankful that our planning permission to extend the car park was granted in October, and we hope that the similar goal of extending Tiffin will be equally well received by the planners!

Andrew, Mandy and their brilliant team look forward to bringing you the best of local produce for the coming year, and join the House Family in thanking you for your custom over the past year.

Wishing you a Happy Christmas.

Alistair

Friends of Bleadon Church



You are invited to-

FESTIVAL OF NINE LESSONS AND CAROLS,

Sunday 17th December, 6.30pm

SERVICES, CHRISTMAS EVE AND CHRISTMAS DAY

Sunday 24th December

10.15am Matins for the 4th Sunday of Advent

5.00pm CRIB SERVICE - mainly for children but adults welcome

11.30pm MIDNIGHT MASS OF CHRISTMAS

Monday 25th December

10.15am CAROLS AND CHRISTMAS DAY COMMUNION with a chance to choose your favourite carol

EPIPHANY CAROL SERVICE - 10.15am, Sunday January 14th - we remember the visit of the Wise Men to the infant Jesus

AND FURTHER INTO 2007-

Ash Wednesday - 21st February, 7.30pm, Sung Eucharist for the beginning of Lent

ANNUAL PAROCHIAL CHURCH MEETING (APCM) - Monday 5th March, 7.30pm

Mothering Sunday - 18th March, 10.15am Family Service

Palm Sunday - 1st April

Maundy Thursday - 5th April

Good Friday - 6th April

Easter Eve - 7th April

EASTER DAY - 8th April

THANK YOU, DAVID (LOWTON)

Organist and choirmaster, David Lowton, retires on Sunday 7th January, his final Service being the Sung Eucharist at 10.15am. We have enjoyed a very high standard of organ and choral music during the twelve years in which David has been in this post. We are very grateful to him. The post is being advertised.

AND NOW TO ANOTHER DAVID (PARKINSON)

TIME TO RETIRE

My final Sunday as Rector will be 11th March, the day after my 65th birthday. Angela and I, with youngest son, Christopher, and foster son, Tommy, came to Bleadon in July 1988. Our two older sons, Simon and Andrew, both left home before we moved. Since then, our family has grown to include 5 grandchildren.

It has been the most wonderful stay and we have made many friends. We will be moving into Weston, near enough to keep in touch.

Very best wishes for Christmas and the New Year,

God bless,

Yours sincerely,

David Parkinson - Rector

Tel: 01934 812297

Email: Dtparkinson@aol.com

Bleadon Coronation Hall



At our monthly meetings, amongst other routine business, the item 'Hall improvements' is our committee's 'think tank'. There is always lively discussion and exchange of ideas, not just about current needs and the money available, but a forward long term plan. In the past few years this plan has resulted in many projects being satisfactorily completed.

On a sadder note it was with great regret that I heard of the passing of John Ward. Back in 1989 when the short mat bowling club was formed, he was nominated as Chairman, and was their Hall representative for a number of years. In that time John contributed a great deal to our committee as a valued member.

Len Chamberlain (Chairman)

Bleadon Beat



In the New Year the 'Neighbourhood Policing' scheme will be rolled out across the country and should be in place, locally by next April. For several years Policing in Avon and Somerset has been under similar lines to the new scheme with identifiable community Police Officers being assigned to particular Parish beats boundaries. Under the new scheme, extra staff, in the form of Police Community Support Officers, will be recruited for each area. They will be able to carry out regular uniformed patrols within the Parish. This should enable them to form valued links with the local community and, by increased patrolling, lead to improved public reassurance. A PCSO, shared between Hutton, Locking and Bleadon, should be in place by next April. In addition PS Bartlett has recently been appointed. He has overall responsibility for the Policing of the villages around Weston.

Next Village Surgery Dates are as follows: - Thursday 21st December, Friday 12th January, and Friday 23rd February at 1230 in the Church Room.

Contacting the Police.

Villages Neighbourhood Policing Team, WsM 638123,
Ongoing non-emergency calls to HQ on 0845 4567000.
Emergency Calls 999.

Pc 2307 Woolacott

Bleadon Friendship Club



Club Re-opens January 12th 2007

January 26thClub New Year Lunch 2007
February 16thU3A Concert Party
February 23rdMrs Cook (Hutton Wayfarers)
March 9thMary Thyne (Battle of Sedgmoor)
March 30thPat Hase (Holiday Diary 1836)

Back in the summer, Beryl, on behalf of the Committee successfully applied for a grant from the 'Community Action Transport Scheme' --- and the club received £500 (based on 2/3rd grant and 1/3rd self funding).

Members have thus enjoyed several outings since June at a fraction of the normal cost using the Dial-a-Ride bus.

New members are always welcome.

Ring Beryl on 01934 813363

Bleadon Baby and Toddler Club



We have had a very enjoyable term with lots of new members joining the group. The group has continued to update the toys to cater for both the babies and toddlers.

Each Wednesday morning the group offers a craft activity, a free-play area with large toys, a book and puzzle corner and a baby soft play area with lots of toys. We end each session with everyone joining in well-known songs.

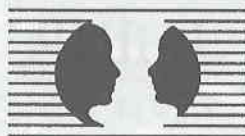
We are about to have a fundraising morning for Children In Need, a morning where we Bring a Relative so that other members of the family can see what we get up to.

We have a Health Visitor attending on the 2nd and 4th Wednesday of each month to weigh babies and give parents advice and reassurance.

Please come along and try out the toddler group. It's a great place to meet other parents and for your child to make new friends. New members are always welcome!

Alan Robinson

BACP Accredited
Counsellor & Psychotherapist



01934 744123

(Draycott near Cheddar)

www.counselling.in-somerset.net

BLEADON CHURCH - PARISH MAGAZINE

Monthly 30p



News, Views, Reports
Times of and information about
Services and special events.



*To get your copy, phone
Pete Williams on 812020*

Also obtainable from Bleadon Post Office

BRIDGE GARAGE

(Prop: Peter Briffitt)

BLEADON VILLAGE

AT YOUR SERVICE

TELEPHONE: 01934 812206

PHILIP JAY

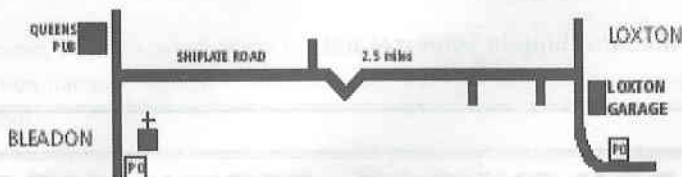
01934 750445 DAY

01934 750439 EVE

**LOXTON
GARAGE**

LOXTON BS26 2XE

philip-jay@loxton-garage.fsnet.co.uk



Motor Vehicle Repairs • Servicing • Cambelts • Welding • Accident Repairs
Electrical • Fault Codes • Breakdown • Diesel & Petrol • FOC Courtesy Cars

FRANCE

HOLIDAY HOME TO LET IN SUNNY SOUTH VENDEE

www.vendeeholidayhouse.co.uk



A fully furnished three bedroom bungalow situated in **St Denis -du- Payre** on the edge of a "reserve naturelle", home to around 120 species of wild birds each year. Within easy reach of **Luçon** and the beautiful beaches at **La Faute, La Tranche** approx 10 miles away. The lively resorts of **La Rochelle** and **Les Sables d'OLonne** approx 30 miles and **La Rochelle Airport** - approx. 30 km
The accommodation comprises of: fully equipped kitchen/dining room, living room with log fire, TV (French & English Channels), one double bedroom, one twin bedded bed room, one bedroom with bunk beds and double sofa bed, bathroom/shower room and separate WC, laundry, electric heating, private parking. Large fenced garden with patio, garden furniture and barbecue.

Exclusive use of 8m x 4m Private Pool.

For full details prices and availability please ring or e-mail Ray and Yvonne Hicks .

Telephone: +44 (0)1934 811993; mobile 07775928596;

e-mail Raymond.Hicks@Btinternet.com

Connoisseur CHOICE

1st Class Catering!

BUFFETS OR FULL SERVICE

MENUS FOR ALL OCCASIONS

PRICES FROM £3.00 PER PERSON

CATERING FOR ALL SIZE PARTIES!

DELIVERED ANY PLACE, ANYTIME
FREE OF ANY EXTRA CHARGE

FULL WAITRESS SERVICE SUPPLIED

COMPREHENSIVE RANGE OF
SIT DOWN MENUS AVAILABLE

VERY COMPETITIVE PRICES YOU
CHOOSE THE MENU
AND THE VENUE - WE DO THE REST

PURN HOUSE FARM, BLEADON BS24 0QE. TEL 01934 814899

Friends of Bleadon Church



We have enjoyed two very good concerts over recent weeks. The Somerset & Avon Constabulary Male Voice Choir performed in the Church during the Weston Arts Festival. Their standard was extremely high and the programme varied. Supporting them, two artists gave a duet on the piano and sang or played solos. This was their second visit to Bleadon and are very worthy of a repeat concert.

The second concert was given by Brass Attack a brass ensemble with a difference. They were very professional and provided an enthralling programme. In support was a soprano soloist, Louisa Puddy, who is excellent and David Lowton who is well known and is our church organist.

Proposed events for 2007 include a Pancake Party in February, The Hermitage Ensemble - Soloists from Russia (undertaking a return visit) in May and the Pontnewydd Male Choir from Wales giving a concert during the Weston Arts Festival in October.

Lent Lunches at the Parish Church of St Peter and St Paul

Lent Lunches will be held as usual, every Thursday during Lent from Thursday, 22nd February until Maundy Thursday, the 5th April. This is a very pleasant occasion when people meet up for home made soup and bread together with a good natter. The venue is the Church Room and the cost just £1.50p. Monies raised are always donated to a local charity.

This event is open to everyone and we would be glad to see as many people as possible. Please come along and bring family and friends, not to mention children and grandchildren.

Last but not least we will be planning for the **May Fayre on the 7th May.**

We would welcome additional help on the organising committee and on the day(even if the help is only for an hour or so). Home made-produce-for the stall is always needed.

If you would like to help in any way please talk to:-

Graham Rogers (Tel 811571),

Brian Drinkwater (Tel 813636) or

Reyn Badger (Tel 811490)

Clicsargent Quiz

A million thanks to all those in the Village and beyond who supported the annual quiz in November. A total of £1317 was collected for the charity, the most money ever raised since Pat Dain started the quiz all those years ago.

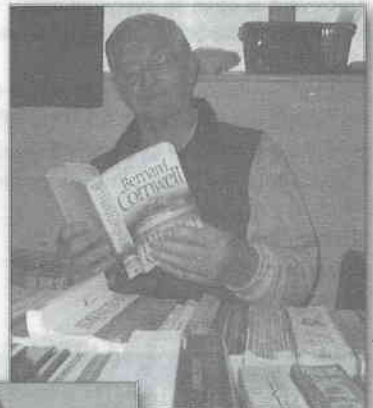
Next year Pat will be celebrating the 20th anniversary of the quiz and wants to make it really special, so here's hoping that as many of you as can will come along to take part. Watch out for more details nearer the time, what we do know is that it's in the Coronation Hall on November 24th 2007.

Bleadon Village Monthly Market

Yes, Bleadon Village Market has been running for four years. Since the first market in December 2002, it has gone from strength to strength, to become the envy of many other villages in the area. What was once the annual Christmas Fayre, started as a very popular fund raiser for the Coronation Hall; with a few stalls, raffle, coffee and a mince pie, has become a regular monthly event, a social meeting place where you can have a chat over a cup of coffee and a toasted snack, somewhere to buy local produce, meat, cheese, cider, preserves, plants, a special gift, book and much, much more. All profits, from table hire and refreshments go towards the upkeep and improvements to the halls. What a fortunate village Bleadon is to have two beautiful halls, and such a dedicated Management Committee who, as well as looking after the halls, find the extra time to run the market every month. Also we mustn't forget those non-committee friends who turn up every month to do their bit in the kitchen or man a stall. A big "thank you" to them all,

Bleadon Village Markets in 2007:

| | |
|---------------|----------------|
| 20th January | 21st July |
| 17th February | 18th August |
| 24th March | 15th September |
| 21st April | 20th October |
| 19th May | 17th November |
| 16th June | 1st December |



A list of organisations which regularly use the Coronation Halls



Mondays

| | | Contact | |
|----------------------|---|-------------------|---------------|
| 2-5pm | Bleadon Bridge Club | Mr D Munden | 812772 |
| 10am-noon | Marie's Mini Movers** | Mrs M Keele | 07939 038 071 |
| 7-9pm | Exercise Class ** | Mrs M Keele | 07939 038 071 |
| 7.30pm 1st Monday | British Sugarcraft Guild W.S.M. Branch | Mrs F Hatcher | 620784 |
| 7.30pm 2nd Monday | Bleadon Parish Council | Mr B Poole, Clerk | 01278 787555 |

Tuesdays

| | | | |
|---------------------------------------|---|------------------------------|------------------|
| 10am-noon | Tatty Bumpkins** | Mrs S Hancock | 815157 |
| 2-4pm 2nd Tuesday | Bleadon Ladies Group | Mrs B Pugh | 814362 |
| 2.30-4.30pm 1st,3rd,4th | Bleadon Short Mat Bowling Club** Sept-June | Mrs J Tiney | 813893 |
| 6-7.30 pm 7.45-9.00 (term time) | Bleadon Brownies** Bleadon Guides** | Mrs R Hemmings Mrs B Ware | 811891 811545 |
| 7.30 pm 1st,2nd,4th,5th | Bleadon Photographic Group Sept-May | Mr K Tapley | 623877 |
| 7.30 pm 3rd – Oct-June | Bleadon Horticultural Society | Mr C Cudlipp | 813152 |

Wednesdays

| | | | |
|----------------------------|--|----------------------------------|--------|
| 10am-noon 2nd & 4th | Infant Welfare Clinic & Toddler Group | The Health Visitor at the Clinic | |
| 10am-noon 1st,3rd & 5th | Toddler Group | Mrs E Knight | 625089 |
| 1.30pm | Yoga Class | Mrs D Marsh | 750438 |
| 7.30pm | Bleadon Players/Rehearsals | Mrs S Kelly | 645135 |
| 7.45-10pm (term time) | Ballroom & Sequence Dancing | Mr L Masters | 811976 |

A list of organisations which regularly use the Coronation Halls

Thursdays

| | | | |
|---------------------------|---|----------------|--------------|
| 10-12 noon | Art: Watercolour painting class** | Weston College | 01275 810659 |
| 8.00pm 1st & 3rd Thurs | Bleadon Folk Dancing Group Sept-June | Mrs J Thorne | 814007 |
| 7.30pm 4th Thursday | Bleadon Sugarcraft Club | Mrs P Webb | 01278 684484 |

Fridays

| | | | |
|---------------------|--------------------------|--------------|--------|
| 2-4pm | Bleadon Friendship Club | Mrs B Davies | 813363 |
| 7.00pm Sept-June | Short Mat Bowling Club** | Mrs J Tiney | 813893 |

Sundays

| | | | |
|-------------------|--------------------------|-------------|--------|
| 2.30 Sept-June | Short Mat Bowling Club** | Mrs J Tiney | 813893 |
|-------------------|--------------------------|-------------|--------|

**in the Jubilee Room

The Halls are available for hire by private individuals or organisations.
There is a reduced rate for Bleadon residents. ENQUIRIES: 812370

What's On - In the Coronation Halls - Make a note in your Diary!

| Date & Time: | Event: | Organisation/Contact: |
|-----------------------------------|-------------------|---------------------------------|
| Thurs/Fri/Sat 10/11/12 January | PANTOMIME! | Bleadon Players 625452 |
| Sat 3 March | VICTORIAN EVENING | Bleadon Church 811490 |
| Sat 17 March | SPRING SHOW | Horticultural Society 813152 |
| Mon 7 May | MAY FAYRE | Bleadon Church 811490 |

Beck's Advance Tech Salon

Now offering

The latest in Technology IPL

Endermologie and Oxyfusion

Permanent Hair Removal

Acne Treatment

Skin Rejuvenation

Full body Rejuvenation

Non-surgical Bum Lift Tummy Tuck

Cellulite and Fat Removal

**No Needle alternative to Botox, collagen
and Fillers**

Age Spots & Pigmentation Removal

Microdermabrasion

Chemical Peels

- Excellent and quick treatment results
- Safe & approved

Treatments for Men and Women

For more information call Becky on

01934 629000

15b Waterloo Street, 2nd Floor, Weston-super-Mare
Along from the Boulevard above Stanley's Betting shop

CHATTERLEY PLUMBING & HEATING

All types of plumbing work undertaken

- Servicing of boilers and fires
- Taps and washing machines
 - Central heating
- Bathroom installation

Free Estimates given
No call out fee
24 hour Service

Tel: 01934 415565

Mobile: 07887 768877

9 Cambalay Walk

W-s-M BS22 8AY



**Don't suffer
violence in silence**

Call

0800-69-49-999

for free confidential support and advice

The Domestic Abuse FreeFone Support Line (Daffs) offers a single point of contact for free and confidential advice and support to any person suffering domestic abuse. Call now, protect yourself and anyone you suspect may be suffering.

Visit www.k9zone.co.uk

For Professional And Caring

Dog Grooming

- All Breeds Welcome
- Bathing
- Clipping & Styling
- Nails Cut
- Insured
- Collection Service
- Easy Parking



Call Diane or Kim At:

DOGZONE

Accommodation Road, Bleadon

01934 811444

Email: hazenaide@btconnect.com

Pet Care Trust & British Dog Groomers Association Member

CONTACT ADDRESSES

EDITOR.....penny.rob@bopenworld.com
PARISH COUNCILwww.bleadonparishcouncil.gov.uk
CHURCHwww.bleadonchurch.info

WATERHOUSE ELECTRICAL & ENGINEERING SERVICES

Commercial • Domestic • Industrial Installations

Now incorporating a Plumbing & Heating Division

1 Lakeside Barns, Shiplate Road, Bleadon, Weston-super-Mare BS24 0NY.

Tel 01934 813803

Mobile 07860 597463

Corgi Registered
198748

National Inspection Council for
Electrical Installation Contracting

NICEIC
APPROVED CONTRACTORS

www.xscomputersupplies.com

CDr, DVDr, Ink Cartridges, Hardware
Unit 8 Purn House Farm,
Bleadon

Tel. 01934 811155

Hours of business:-
10.00am – 5.00pm Weekdays
10.00am – 2.00pm Saturdays



'FREE' nursery sessions for 3-5 yr olds available, ring us on 01278 760219 to find out more



Give your child the right start

Beautiful rural location

Only 2 miles from J22, M5

Spacious secure environment

We provide the structure for children to learn, play and have fun, providing the social and educational skills they need to develop as they move into primary school education.

Please contact us if you would like to visit our Kindergarten, look at the facilities and discuss how we can help educate and care for your child.

East Brent, Highbridge, Somerset, TA9 4JA.

Tel 01278 760219 Fax: 01278 760158

E-mail: rossholme@aol.com www.rossholme.co.uk

Rossholme Kindergarten

For Boys & Girls

For
2+ to 5
year
olds.



MAXWELL HOUSE PRINTERS



**Organised...
Industrious...
Co-operative!**

**Litho Printing
from the
Professionals!**

tel... 01934 822601

Unit 3...Elborough Farm...Banwell Road...Nr Locking
Weston-super-Mare...Somerset...BS24 8PB

enquiries@maxwellhouseprinters.co.uk

www.maxwellhouseprinters.co.uk

Bleadon Ladies Club



As 2006 draws to a close we look back on a very successful year. We have many new members and have enjoyed our monthly meeting. The New Year promises to be even better.

January 9th

"The Life of Mario Lanza"
Miss Victoria Turner

February 13th

"Roman and Georgian Baths"
Mr Brian Amesbury

March 13th

Mrs Linda Greenwood will talk on her
"Charity for Poor Children in Kenya"

So you can see it is worth joining our club, we meet the second Tuesday of the month in Coronation Hall at 2.30pm.

The members of the committee would like to wish all members and friends a very Happy Christmas and a very good New Year.

Make a New Years resolution to come and join us. Everyone is made very welcome,
For more information call Barbara on 814362

Poppy Appeal 2006

This year's appeal in Bleadon yielded £681.76p, a slight reduction (3-4%) on the last three years. The house-to-house collection was an improvement, thanks to the sterling efforts of I.D Clark, Doug Norfolk, Sarah Ripley, Jill Walford and Pete Williams.

Unfortunately this gain was wiped out by a drop in the static collections, but I have ideas for remedying this next year.

As always, however, the most credit has to go to the people who put the money into the collecting tins.

On behalf of The Royal British Legion I thank you all.

Les Masters

Houndsounds Karaoke

Karaoke

Discos

Parties (inc.children's)

Quizzes



For a fun event contact George - your local presenter.

Tel: 01934 814232

Mobile: 0785 132 8596

e-mail: enigmasounds@aol.com.

Wartime Christmas Memories

I was looking through some wartime diaries the other day and came across various accounts of how everyone coped at Christmas during those dark days. This was a time when rationing made the Christmas dinner a triumph of ingenuity and Santa cobbled presents together from discarded household bits and pieces.

Practical gifts were in vogue – gardening tools, books, bottling jars and seeds. Some gardening magazines even recommended a bag of fertilizer as a gift, and the most popular present for Christmas 1940 was soap. One of the few concessions at Christmas was that the tea ration was doubled from two to four ounces and the sugar ration was increased from eight to twelve ounces.

Christmas 1941 was a lot tougher as rationing was at its height, - wrapping paper was very scarce and the fare that we take for granted these days, turkeys, chocolates, cigarettes, wines and spirits were in very short supply, if available at all. People made or renovated presents, and magazines in the lead up to Christmas were full of ideas for home-made gifts.

Christmas 1942 saw people making their own decorations mostly from cut greenery and painting them with whitewash. The Ministry of Food suggested –

"A Christmassy sparkle is easy to achieve by dipping your greenery in a strong solution of Epsom Salts. When dry it will be beautifully frosted"

Another suggestion was to replace the scarce fruit with –

"jolly coloured vegetables,- cheerful carrots, the rich crimson of beetroot and the emerald of parsley ... as delightful to look at as it is to eat"

Christmas 1944 was probably the most joyless as the news from the continent was of death and destruction. Alcohol was at its scarcest but extra rations of sugar did mean some special treats in the form of home-made sweets. Another book of the time had instructions for making toys from old vests and stockings. Imagine that today!!

Talking to my friends and neighbours here in Bleadon I found that country people had it a bit easier, in that food from 'nature's larder' (a shot game bird or rabbit for instance) would often supplement the meager meat ration. Those who kept their own poultry or were farmers didn't seem to suffer the shortages as much as those in the towns and cities, and much bartering went on. Fruits from the hedgerows were gathered in the autumn and duly bottled or turned into jam or wine. Nothing was wasted and as much as could be, was recycled, - a life-style we could all emulate today.

Here are some personal memories from Bleadon :-

Sylvia was sent a Father Christmas from Germany, and this jolly, toy figure complete with sack over his shoulder would adorn the teacher's desk for the ten days before Christmas. Local firms would supply small items for the children and Sylvia remembers receiving a game of Ludo on a card and a small round mirror advertising the Co-op.

Mr. Ruck who lived at Wonderstone sent down juicy oranges to be shared out and every child went home with a small paper carrier bag of these goodies.

Ruth recalls her dairy farming, parents having to go out early on Christmas morning to deliver milk around Weston, then it was home to the festivities. She also told me that Edwin

Wartime Christmas Memories [cont]

Clogg who lived at The Mount would cut the tops of small firs to provide Christmas trees, and there was always a larger one cut for the party in the Coronation Hall. This would be decorated with lights brought from home by the head teacher Mrs. Jones and small drawstring bags made from crepe paper by Mrs. Parker. These contained a few sweets and were hung on the tree as decorations and as gifts for the children. Paper chains were loops of coloured paper stuck together with paste and strung about .(oh how I remember making those!) Mrs. Parker also played the piano for the party games and carols.

Ken doesn't so much remember the parties but does recall that groups of boys and girls would go out carol singing and share out the proceeds afterwards. He also remembers the 'Jaffas' being handed out and bottled fruit being sent to the parents. With quite severe winters back then he told me that the old river at Hobbs Boat would freeze over solid and most of the village children would spend many fun-filled hours skating and sliding on the ice.

Of course because of the war the Church Bells were silent - but they more than made up for it when VE Day came.

Penny Robinson

Bleadon Players

It's that time again!.....Oh no it isn't!.....Oh yes it is!

Pantomime 2007.

We are busy rehearsing "Tom, the Piper's Son" by Norman Robbins.

Tom, who stole a pig and away he ran, confronts the evil Knave of Hearts, who is trying to take over the village of "Tottering on the Bleadon Brink". He is striving to save Princess Marigold, whose parents are the King of Hearts and Queen Mattiwilda. He is assisted by his mother Dame Aubergine, her 'fiasco' Georgie Porgie and the lovely Fairy Harmony. With Bucket and Spade, a dodgy duo who serve their master the Knave and a dizzy Lord Chamberlain with loyal Jack and Kitty and we're off.

All this will take place in the

Coronation Hall Bleadon on January 11th, 12th, and 13th.

Tickets available from Bleadon Post Office, December 18th onwards or on the door.

The Bleadon Players would like to assure the public that no pig will be harmed during the staging of this production.



One Day At A Time - A Short Story

It was the quiet that woke her. Dawn was brightening the windows and she lay for a while listening. Nothing stirred: birds silent, no hum of distant traffic, absent the friendly buzz and chink of the milkman's float. Perhaps it was Sunday she thought, so easy nowadays to forget, the days much the same, weekends having no relevance at her age, in her condition. But where was the strident strike of church bells? Nothing.

Easing back the bedclothes she made for the toilet, then drawn to the window she shuffled across, pulling at the curtains with their unyielding patent runners and pulling them apart. Light

flooded in, not the usual grey February cast but startling white, so bright to the eyes that she instinctively raised a shielding hand.

"Snow!"

It was still drifting dreamily down, transforming her everyday aspect into something special. Yesterday, or was it the day before, a wind had ravished the garden, things broken and dishevelled:

a smashed greenhouse pane, uprooted palm, a panel lost leaving the fence gap-toothed. Now it was

masked, cloaked, smooth rounded and tidy again under an opaque white blanket. The frenzied bare-branched trees were slumbering now, still and soft etched against the sky.

Despite the morning chill she stood at the window. The Doctor had told her to 'take each day as it comes.' He might as well have added 'don't make any plans,' she thought. She hoped to see the spring this year: the first crocus as sunshine warmed the frosty grass, hawthorn bursting, bees to-and-froing between the blossom-heavy branches, new life replacing what has passed. But today was a bonus; never did she think she'd see snow again.

In a while young Tracy or Sharon would bring the morning tea. The chairlift would begin its rattling passage between floors and the spell would be broken. Perhaps after breakfast she could persuade someone to take her into the garden, just briefly, to savour the moment. Until then she watch and regard her new white, quiet world.

One day, one beautiful day at a time.



OFFERS

- REGULAR GRASSCUTTING
- HEDGES & TREES CUT
- SHRUBS PRUNED
- BLOCK PAVING REPAIRS
- FENCE PAINTING
- TURFING
- PATIOS & CHIPPINGS LAID
- LAWNS SCARIFIED

DECKING ERECTED

**PATIOS & PATHS
PRESSURE WASHED**

Mark Howe gardening services

**ALL TYPES OF FENCING
ERECTED & REPAIRED**

SHED ERECTION & REPAIR

9 Malvern Road
Weston-super-Mare

Phone: 01934 413594
Or
0777 327 2003

MARIE'S MINI MOVERS

NEW CLASSES COMMENCING
AT BLEADON CORONATION HALL

MONDAY 8TH MAY, 2006

10.30AM -11.30AM

TO BOOK YOUR SESSIONS
AND
FOR FURTHER DETAILS PLEASE CONTACT:
MARIE KEELE
TEL:07939038071 / 01934 623519

FIRST CLASS FREE !!



AGE:- FROM 1½ YEARS -UP TO 4 YEARS
(WITH MUM / DAD / CARER)

A VARIETY OF ACTIVITIES INCLUDING:-

RHYMES, INSTRUMENTS, INTERACTIVE
GAMES, DANCING, MINI FITNESS,
THEME DAYS

A GOOD WAY TO ENCOURAGE INTERACTION
AND SOCIAL OPPORTUNITY

MARIE'S EXERCISE TO MUSIC

CLASSES WITH
R.S.A. QUALIFIED INSTRUCTOR

**KEEP FIT & HAVE
FUN**

AT
BLEADON CORONATION HALL
EVERY MONDAY EVENING

**7PM - 8PM (SLOW CLASS)
8PM - 9PM (FAST CLASS)**

EVERYONE WELCOME TO EITHER CLASS
Equipment provided

ALL FOR JUST £3.00 PER CLASS
JUST TURN UP

FOR FURTHER DETAILS
CONTACT MARIE ON: -
07939038071

**For community news and sport
read it first in the**



Weston Mercury

Weston's paper

Telephone us on
01934 422500

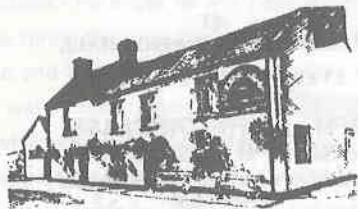
with all your local news

**E-mail: Newsdesk@thewestonmercury.co.uk
www.thewestonmercury.co.uk**

QUEEN'S ARMS

Celtic Way, Bleadon
BUTCOMBE BREWERY

Dan and Jess welcome you to our traditional village pub with a warm and friendly atmosphere. Why not visit the Queen's Arms courtyard for a summer drink. Relax and enjoy ales direct from the cask and savour our excellent food freshly prepared by our award winning chef.



- CHEFS SPECIAL DAILY
- REGULAR THEME NIGHTS
- GUEST ALES
- COURTYARD RECENTLY OPENED

In the 2006 Good Pub Guide

Tel: 01934 812080 Fax: 01934 811234

or visit our website at **www.butcombe.co.uk**

Landscape Photography



Landscape photography is the oldest of all the photographic themes since the very first photograph was produced by J. M. Niepce in 1816 (some 12 years before Dageure or Fox Talbot) onto a coated Pewter Plate. It was not by chance that a landscape was chosen, nor was it for artistic reasons, but for pure practical purposes only. The coating was so insensitive that the selected subject needed the combination of brilliant sunlight and the need to stay static during an exposure one day long. The process used was albumen. Landscape photography is the only theme in which the photographer has little or no control of the subject, the exception being Land Art which I consider to be more Art than Photography. In all others the subject matter is under the Photographer's control by way of props or make up. As a consequence of this, to record a landscape, personal style and approach to the subject are all important, It relies on the choice of a unique and personal way of seeing and approaching the subject and making a statement to reflect ones innermost feeling or conviction...

In analysing a list of landscape Photographers and relating this to my own abilities I consider myself more of a "Formal Landscape" photographer and this is certainly the area which appeals most to me. The majority of landscape photography falls within two sub-areas:-

1. Art genre - Ansel Adams and Franco Fontana
2. Symbolic - Eliot Porter and Fay Godwin

Of these great "Photographic Artists" I place Ansel Adams in No. 1 position having been a great admirer of his work for many years. I believe that no other photographer has managed to create the deep sense of atmosphere, quality, composition and technical attainment -achieved by this one man, in the words of Ansel Adams "My approach to photography is based on my belief in the aspects of grandeur and of the minutiae of all about us". Adams' pictures have characteristics all of their own. He achieves a sense of largeness and finds shape and form that do justice to immensity. In 1932 he was one of eleven founder members of a group, f.64. The name derived from the smallest stop available on the large format camera. At f.64 images of great clarity and depth, of field were produced which were typical of Adams' work.

Franco Fontana has produced work of great feeling and quality, but still, in my view a long way from Ansel Adams.

The early American photographer Carleton E. Watkins (1829-1916) was the first exponent of grandeur using large format cameras. The camera format size he used was 22" x 18" and this, coupled with a specially designed wide angle lens which could encompass 75°, produced the earliest photographs of Yosemite. An area which Ansel, Adams recorded prolifically some 70 years later.

Watkins used the wet plate collodion process for the negative and printed onto albumen paper. He was probably the first photographer to use this process commercially. Adams' quality came partly from the use of large format (Min. 10" x 8") cameras and this, coupled with his expertise in developing the Zone system of metering, gave him the quality that has been unsurpassed.

Landscape Photography [cont]

The dictionary definition of "Landscape" is "A wide view or vista of natural scenery. A painting or photograph or other pictorial representation depicting such scenery".

Many photographers think of landscapes as being the 'easy option' and yet it is rarely we see images to compare with some of the Greats. Too many so called landscapes are simply record or even holiday shots using landscapes as the subject matter and do not encompass the earlier referred to, innermost feelings or conviction of the author.

A landscape photograph needs as much, if not more, planning than a studio shot. In a studio everything is under the control of the person behind the lens, but with landscape many aspects are beyond control and it is a matter of waiting.

To-day compared with the days of Ansel Adams and the like, we have far better lens, better emulsions and a greater range of them to choose from, greater mobility and in real terms photography is much cheaper, and yet where are the modern day Ansel Adams, and Eliot Porters? May be we are all striving to keep up with technology rather than mastering the basic art of compassion of Landscape Photography.

KEN TAPLEY A.R.P.S.

Chairman Bleadon Photographic Group.

(With apologies to all those readers who have no interest in photography)

Editor .. check out Ansel Adams' work yourself by looking at his calendars.. stunning photos.

Think About It!

Working out the successive gifts sent over one notable Christmas period by a 'True Love' to the subject of his affections means, by my calculations anyway, that at the end of the twelve days as well as having to find room for twelve partridges each having its own pear tree, the poor girl will be trying to avoid twelve athletic Lords pursuing or fleeing from twenty-two cavorting ladies and forty agricultural maidens. She will be busy cleaning up the mess that twenty-two turtledoves, thirty French hens and thirty-six calling birds will have produced; hopefully the Queen will have sent someone round to reclaim the forty-two swans. Her head will also be bursting from the racket that thirty pipers accompanied by thirty-six drummers will be making. Even though the forty-two productive geese will help to feed them all I'm sure the forty valuable rings will end up in the pawnshop.

WANTED

China Glass, Bric a Brac
Old Hallmarked Silver
Old Jewellery
Silver Plate and Cutlery
Tea & Dinner Sets
Medals, Swords etc.
Old Diamond Jewellery
Grandfather Clocks
Oil Paintings (any condition)
Old Picture Frames
Water Colours
Walking Sticks, Stick Stands
Blue & White Pottery
Silver Photo Frames
Royal Doulton, Worcester
Clarice Cliff Pottery
Ruskin, Moorcroft
Leather Bound Books

OLD

Antique Furniture
1920's and 1930's Furniture
Inlaid Furniture
Hallstands, Sideboards
9 Drawer Desks
Chests of Drawers
Display Cabinets
Bookcases, Bureaux
Round Tables
Sets of Chairs
Wall and Mantle Clocks
Barometers
Carriage Clocks
Barley Sugar Furniture
Wind up Gramophones
Musical Boxes
Sculpture, Bronzes
Extending Tables

WE WILL ALSO PURCHASE ENTIRE CONTENTS

WINTERS ANTIQUES

Weston-super-Mare

For A Prompt And Personal Call

Tel. 01934 814610



Sell with confidence to us
We are L.A.P.A.D.A. Registered Members
you can rely on us for good advice



MR RICHARD WINTERS
WILL BE PLEASED TO CALL ON YOU

SPEEDWATCH

WE STILL HAVE A NUMBER OF MOTORISTS WHO INSIST ON SPEEDING THROUGH OUR VILLAGE.
IF YOU ARE FED UP AND WANT TO HELP POSITIVELY THEN PLEASE CONSIDER JOINING THE
SPEEDWATCH GROUP OF VOLUNTEERS.
IF YOU THINK YOU CAN HELP IN ANY WAY PLEASE CONTACT ANY MEMBER OF THE PARISH COUNCIL.

Tiny Toes

day nursery and baby unit

New and fully equipped

DAY NURSERY

Located in Uphill

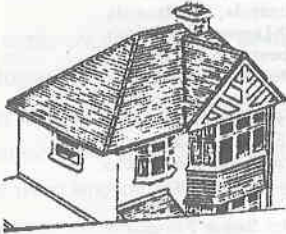


Offering a friendly, loving, safe & spacious
learning environment for your child
For more information, our prospectus or to arrange a visit,
call us

(01934) 412779

The Old Barn, Uphill Road South, Uphill

ROOFCHECK



ROOFING CONTRACTORS
PVC-u REPLACEMENT
SPECIALISTS
TEL: 01934 644430 ANYTIME

33a Swiss Road,
Weston-super-Mare BS23 3AY

Member of the Guild of Builders & Contractors
REFERENCES ON REQUEST

STILLPOINT

Carol Harper

Acupressure massage, Gentle spinal works,
Hawaiin bodywork, Life coaching.

Old Oak Farm, Chapel Allerton,
Axbridge, Somerset. BS26 2PD.
tel: 01934 712726
email: info@stillpoint.uk.com

www.stillpoint.uk.com



SUE JAMES BSc(Hons) Dip.Coouns. Dip.Org.Coouns.

COUNSELLOR

Private and Professional support by an experienced, qualified Counsellor to help with a range of issues and emotional difficulties including:- stress, anxiety, depression, relationship problems, bereavement, confidence, and work related issues.

SAFE, SUPPORTIVE ENVIRONMENT

MBACP (ACCRED) COUNSELLOR

UKRC REGISTERED INDEPENDENT COUNSELLOR

SHORT OR LONG TERM WORK

CONTACT 01934-811685 OR 07840 867491 FOR A CONSULTATION



The first meeting of the season brought Lyn Spencer-Mills and husband Ken to speak to us and show slides of the transformation of their 1.5 acre site into a stunning garden, with lots of different 'rooms' and a fish pond that was large enough for Ken to swim in before it was handed over to the fish.

The title of the talk was "A Garden for Retirement" but none of us had anticipated the amount of sheer hard work that had been put in by Lyn and Ken.

Our November meeting was described by some people as the 'highlight of the year', as we welcomed Paul Gilmore from Sanders' Garden World for what has become his annual visit. His topic this year was 'Autumn into Winter' and he gave us a real insight into the vast range of colourful plants now available to brighten up even the darkest spot throughout the coldest and possibly, the dreariest months of the year. Paul's main emphasis was that there was a right plant for a right spot, so we all need to think carefully where each plant we buy or have given to us, should go.

At the time of writing we are busy planning the beetle drive and social with American style supper which will be held in the run up to the Christmas festivities.

The New Year meetings begin with a talk on "Water Gardening" by John Addison from Cannington College. This will take place in the Coronation Hall on Tuesday 16th January at 7.30pm. Everyone is welcome to attend at a cost of £1.

On Tuesday February 20th we are hosting a quiz against Lymsham Gardening Club, - there will be no charge for this evening.

The 33rd Spring Flower Show will be held on Saturday 17th March

We hope for outstanding entries in all the classes. In addition to the plants and flowers there is the usual photography competition.

There are two classes for photographers in the adult section

- Historical buildings
- 'Wildlife in the garden'

For the under elevens

- An animal or pet

For the older children

- A holiday photo

Thank you to everyone who has supported us throughout the year, and may I, on behalf of the hard working committee, wish you all a Peaceful and Prosperous New Year.

Chris Cudlipp

AND DON'T FORGET – KEEP GARDENING!

What Price Barbie...

With Christmas just around the corner and Barbie still amongst the top presents for little girls ...

A father goes into a toy store and asks 'How much is that Barbie in the window'?
The saleslady replies, 'Which one? We have Workout Barbie for £19.95, Shopping Barbie for £19.95, Beach Barbie for £19.95, Disco Barbie for £19.95 and divorced Barbie for £265.95.'
The amazed father asks in surprise, 'Why is divorced Barbie £265.95 and all the others only £19.95?'

The saleslady annoyingly answers: 'Sir ... Divorced Barbie comes with Ken's car, Ken's house, Ken's boat, Ken's furniture, Ken's computer and ... one of Ken's friends!'

All God's Children

The children in a Catholic Primary school were in the Cafeteria waiting for lunch. At the top of the table was a large tray of apples on which a nun had posted a note '*Take only one, God is watching*'.

Moving further along the lunch line at the other end of the table was a large pile of chocolate chip cookies. A child had written a note, '*Take all you want, God is watching the apples*'.

ADVERTISING IN THE VILLAGE NEWS (A5 Page)

| | | |
|------------------|-------------|---------------------|
| Full page | Village £50 | Non Village £75 |
| 1/2 page | Village £30 | Non Village £45 |
| 1/3 page | Village £25 | Non Village £37.50p |

These rates are for 4 insertions starting with the June Issue.
Please contact the editor for more details



IF YOU OWN A DOG PLEASE DO NOT ALLOW IT TO FOUL THE FOOTPATHS AND VERGES OF OUR VILLAGE. THE RESULTING MESS IS UNSIGHTLY AND A SOURCE OF INFECTION. BE A GOOD CITIZEN AND CARRY A POOP-SCOOP OR A PLASTIC BAG AND TAKE THE MESS HOME. PLEASE DON'T LEAVE IT FOR OTHERS TO CLEAN UP.

PLASTECH WINDOWS

SPECIALISTS IN THE INSTALLATION OF HIGH QUALITY UPVC

- ★ doors
- ★ windows
- ★ patio's
- ★ fascias
- ★ cladding
- ★ guttering
- ★ Full range of conservatories

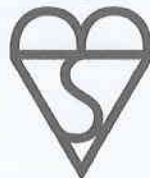
*We offer top quality products
custom made to almost any design*



**A member of
the Guild of
Master Craftsmen**

FENSA
Registered Company

**20 YEARS
EXPERIENCE**



**BRITISH STANDARD
BS 5713 GLASS UNITS**

NO ONE CAN BEAT US ON PRICE & QUALITY

For a prompt & personal service phone
Bleadon (01934) 814500
Mobile: 0777 4475736

Actionwork Films

A Bleadon film company

Producing films for the community and local business

High impact professional quality digital films
produced on VHS video or DVD

We can make all kinds of films for you including:

- Short promotional films
- Business card DVDs
- Self-help videos
- Documentaries
- Community initiative films
- Wedding or birthday videos
- A feature film from your script



From
£1000

Our clients have included the British
Council, Government Departments,
Schools, Colleges, Community
Groups, and small businesses



Contact us on 01934 815163
E-mail films@actionwork.com
Website: www.actionwork.com

This Newsletter is Edited by **PENNY ROBINSON** of 1, The Veale, Bleadon BS24 0NP

The cover design is by **JOHN HICKLEY**

Published by **BLEADON PARISH COUNCIL**, Bleadon, North Somerset.

Produced & Printed by **MAXWELL HOUSE PRINTERS**

Tel...01934 822 601 Fax...01934 822 418