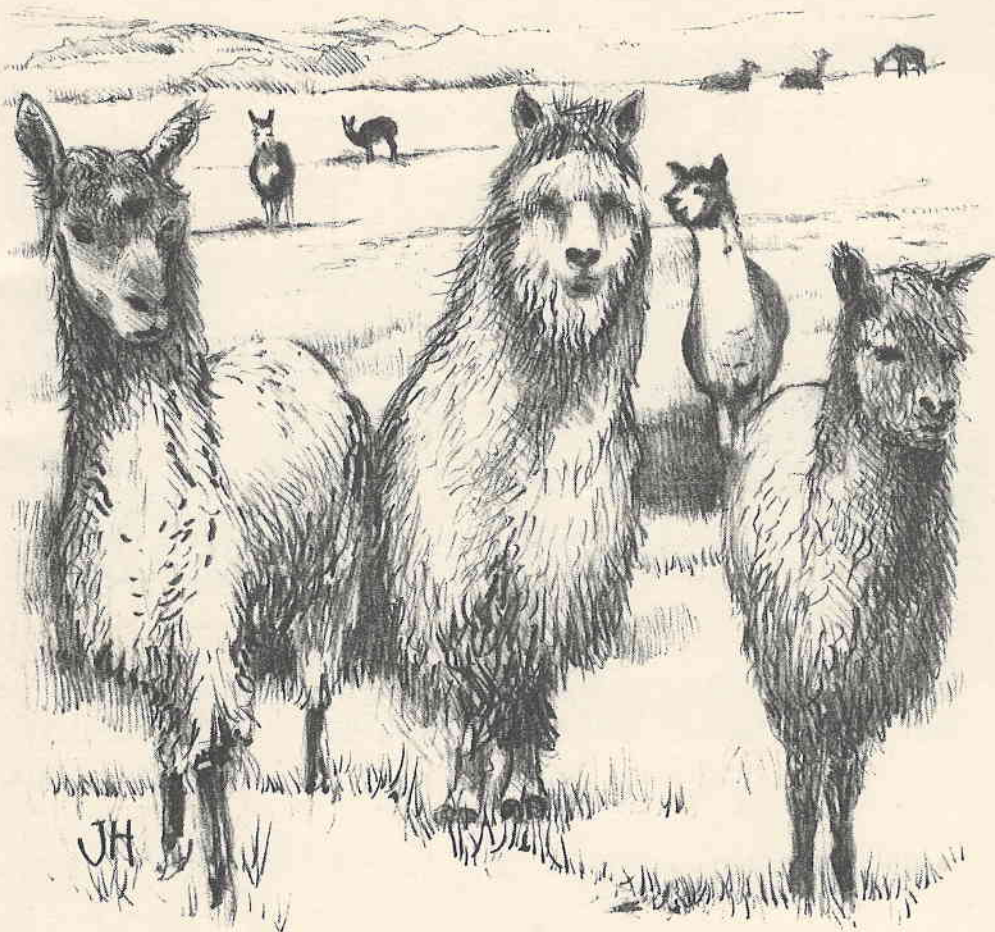


BLEADON



VILLAGE NEWS 69

Bleadon Village Monthly Market

Local Produce. Bread. Cakes. Cheese.
Preserves. Honey. Garden Plants. Lots of Crafts.
Books. Toys. Antiques. Bric-a-Brac.
Refreshments. Something New Every Month!



Saturday 9am - 12.30pm

July 15th, August 19th & September 16th

Coronation Hall, Bleadon

01934 812370 to book a stall
at this popular monthly market



QUALITY
PARISH
COUNCIL

BLEADON VILLAGE NEWS

No 69

YOUR PARISH COUNCIL

- PENNY SKELLEY [CHAIRMAN] 'MENDIP CROFT', CELTIC WAY, BLEADON. TEL.815331
- PENNY ROBINSON [VICE CHAIRMAN] .. I, THE VEALE, SHIPLATE RD BLEADON. TEL. 814142
- RAY HICKS 'FIDDLER'S VIEW, HILLCOTE BLEADON HILL TEL. 811993
- MALCOLM PERRY 'WESTFIELD', I THE BARTON, BLEADON. TEL. 813940
- MARY SHEPPARD 'LITTLEWOOD' BRIDGWATER RD., LYMPSHAM. TEL. 812921
- KEITH PYKE8, WHITEGATE CLOSE, BLEADON. TEL. 813127
- CLIVE MORRIS20, BLEADON MILL, BLEADON. TEL. 811591
- JUSTIN HARVEY-BENNETTTHE BEECHES, CELTIC WAY, BLEADON. TEL. 811373
- ROBERT HOUSELAKE FARM COTTAGES, SHIPLATE ROAD, BLEADON. TEL. 815588

THE PARISH CLERK TO WHOM ALL CORRESPONDENCE SHOULD BE ADDRESSED IS:-
 BRUCE POOLE, 'THE CHIPPINGS', 21 STONELEIGH CLOSE,
 BURNHAM-ON-SEA, SOMERSET TA8 3EE
 TEL, 01278 787555 or e-mail:bruce.poole2@btopenworld.com

The Council meets on the 2nd Monday of the month at 7.30pm, in the Coronation Hall. An agenda is published on the Parish notice board, and any member of the public who wishes to, may attend these meetings and raise any issue of interest at the end of business.

WE AIM TO PUBLISH THIS NEWSLETTER FOUR TIMES A YEAR, -
 MARCH, JUNE, SEPTEMBER, AND DECEMBER.

DATE SENSITIVE MATERIAL AND ADVANCE PUBLICITY SHOULD REACH THE
 EDITOR WELL IN ADVANCE OF THE EVENT, AS A DEFINITE PUBLISHING DATE
 CANNOT BE GUARANTEED.

**The deadline for the next issue will be
 August 19th 2006**

I SHOULD LIKE TO THANK ALL THOSE OF YOU WHO HELP WITH THE DISTRIBUTION OF THE MAGAZINE, AND I DO HOPE THAT I MAY COUNT ON YOUR FUTURE SUPPORT. IF THERE ARE ANY OTHERS OUT THERE WHO WOULD LIKE TO HELP WITH DELIVERIES, PLEASE LET ME KNOW. (TEL.814142). OUR AIM IS TO PROVIDE A COPY FREE TO EVERY HOUSEHOLD WITHIN THE PARISH OF BLEADON. THOSE LIVING OUTSIDE THE PARISH MAY BE ABLE TO OBTAIN A COPY FROM THE VILLAGE POST OFFICE AND STORES OR THE CHURCH PORCH.

UNLESS OTHERWISE STATED THE OPINIONS AND COMMENTS EXPRESSED IN THIS NEWSLETTER ARE THOSE OF THE CONTRIBUTOR AND NOT OF BLEADON PARISH COUNCIL. ANYONE WHO HAS ANY COMMENT TO MAKE ABOUT THIS PUBLICATION SHOULD CONTACT THE EDITOR BY RINGING 01934 814142 OR BY E-MAIL: penny.rob@btopenworld.com

**KEEP UP TO DATE WITH THE PARISH COUNCIL NEWS ON
www.bleadonparishcouncil.gov.uk**

Houndsounds Karaoke

Karaoke

Discos

Parties (inc.children's)

Quizzes



For a fun event contact George - your local presenter.

Tel: 01934 814232

Mobile: 0785 132 8596

e-mail: enigmasounds@aol.com.

BLEADON BLEADON

MANY OF THE PHOTOS THAT WERE DISPLAYED IN LAST YEAR'S EXHIBITION HAVE NOW BEEN PUT ON DISC.

THESE DISCS MAY BE ORDERED FROM PENNY ROBINSON TEL: 01934 814142

A CD-ROM (for PCs only, not Mac) £5.00p

A DVD (plays on most DVD players) £8.50p

A PROPORTION OF THE PROFITS FROM THE SALE OF THESE DISCS WILL BE DONATED TO THE CORONATION HALL FUND.

See www.bleadonparishcouncil.gov.uk for more details



Lympsham Pre-School mission statement.

To prepare children for school life; academically and socially in an environment that allows children to grow in confidence and ability. Dealing with the whole child and creating a safe and warm atmosphere.

- ❖ Opened in 1992
- ❖ Fully Qualified Staff
- ❖ Close link to Lympsham C of E VC First School
- ❖ Set in school hall
- ❖ Use of kitchen facilities
- ❖ Attractive outdoor area for children to play and learn
- ❖ Registered for children age 2 _ to 5 years
- ❖ Government funded for over 3's
- ❖ Open 9 – 12noon Monday to Friday
- ❖ Warm and welcoming environment
- ❖ Holiday club available during school holidays 9am-5.15pm
- ❖ We accept children for between one and five sessions per week

Our Ofsted inspection report of 2004 said "The children are confident to try new experiences showing a positive approach to their learning. They show curiosity and are excellent at exploring the wealth of relevant and stimulating activities that are provided for them."

Please contact us to arrange your free trial morning!

Contact Deborah Smith supervisor for more details and a prospectus on 07743 188865 or email: debra@hemingwaycorp.com . Alternatively leave a message on 01934 812131.

Manor Hall, Rectory Way, Lympsham, Somerset, BS24 0EW Registered Charity No. 1024967

ANNUAL PARISH REPORT - 2006



CHAIRMAN'S REPORT

May I again begin the Annual Parish Report 2006 by expressing my pleasure for a very good year for the Parish Council. We have accomplished much and met many targets, all bolstered by our Quality Status to give a comprehensive community service. The most important ongoing project of the year has been the village plan. Progress has come through many sub-committee meetings and the questionnaire sent to all households, of which 58% were returned; these are now being assessed and I hope will be presented to the Parish Council in the near future.

The internet ready PC is now sited in the Post Office, although just at the moment we are experiencing internet problems. We are very near the first birthday of the Post Office and congratulations are due. The shop, post office and "Tiffins" are already a vital part of our village life and the success of the venture is due to your support and enthusiasm.

In fact, we have had more planning applications this year than in previous years, some difficult, some controversial, but I must reassure you that the Council deals fairly with each and has site meetings for anything larger than a porch. Of course, when the internet is available, all planning applications can be viewed on the PC in the Post Office by going to the North Somerset Web Site.

The Highways Services General Purpose Gang has promised Bleadon four visits over the coming months. Our dropped pavement scheme is now completed, numbering 6 pairs. Our next project, which is already in the planning stage, is the bus stop and lay by in Purn Way. This will enhance the west side of the village, then perhaps later we will add a bus shelter and street furniture. I feel sure that being a "Gateway" village has helped with our pleas to North Somerset. Remedial work will start soon on the grass verge and willow trees on Bridge Road.

Recently, we have paid for the resurfacing of the Coronation Hall car park. We congratulate the Bleadon Youth Club, with their new leaders, excellent community involvement and the growing number of members - well done. On behalf of the Parish Council, I also wish to thank the Hall Committee for their excellent work in maintaining the high standards of the Coronation and Jubilee Halls.

The environment, as nationwide, should be uppermost in everyone's mind. The green boxes and garden waste bags are a small start, but we realise a great deal more needs to be done. Sadly, just at the moment, due to the road through Banwell being closed, Bleadon once again is being used as a short cut. The toll on our roads will again be monitored. Unfortunately, the radar gun is unused. This is largely due to there being no follow up by the authorities and, sadly, a lack of volunteers from the village.

One last achievement for me to mention is the employment of the Village Ranger, who we feel sure will be a great help in maintaining Bleadon's open spaces, as well as inspecting and checking Bleadon Parish Council's assets. This will formalise and regulate many of the activities and services previously undertaken by volunteers. The Jubilee Garden and village tubs will be replanted later this month.

As I hope you can see, the Council is a good working team - long may it continue.
Thank you.

Penny Skelley Chairman

OPEN SPACES REPORT

I am pleased to report another successful year for the village and its open spaces.

Once again our village tubs have looked splendid all the year and I have to thank those who regularly turn up to help with the planting and tending, your endeavours are much appreciated. There are other villagers who take it upon themselves to plant their own containers and the overall effect is very colourful, I should like to take this opportunity to thank them too.

Thanks too, to the volunteers who helped with 'clean up day'. At least for a short time the village looked tidy but it is a shame that there is not enough public spiritedness to keep it so on a regular basis. Now of course since March 2006 we have a Village Ranger, John Hurcombe, so we are sure that Bleadon will always look its best.

There has also been more to say on the subject of 'dog mess'. I enquired into the costs purchasing bins and cost of emptying them, but the real stumbling block still remains i.e. their positioning. Once again I can only implore all dog owners to be responsible, carry plastic bags and take the offending material home to their own bins!

Mark Howe and his team have continued to maintain our playground and other grassy areas in the usual efficient manner, and have also done a good job in tidying the Jubilee Garden, which has improved visibility in that area immensely. The shrubs around the telephone box and the toilets have been cut back and that has also visually enhanced the area. We are also grateful to Mark for his work in looking after the Churchyard so well, and all the other jobs he undertakes when the occasion arises.

My thanks too, to the Mendip Rangers who led by Andy Eddy have kept our stiles and footpaths in good order. They also have taken care of the picnic furniture in one lay-bye in Roman Rd. The information table is to be re-positioned. New kissing gates/squeeze gates have been positioned on the footpaths in and around the village, for which many of us are very grateful.

The Churchyard

There has been need for the usual remedial work around the churchyard, the cutting back of the undergrowth and the trimming of the trees etc. and this year the area abutting the Churchyard wall has been drastically dealt with so that it may come to be used as a new Garden of Remembrance.

The safety of headstones became an important issue during the year, but our Church Warden has the situation well in hand. Also our local MP has written to the appropriate Government Department for a definitive answer so that the removal or 'knocking down' of apparently unsafe memorials would not be undertaken without first informing those relatives concerned.

After a meeting with the PCC in 2005 a recommendation was made concerning the resurfacing of the footpath which runs through the Churchyard and also the entrance up to the West door, but as yet this has not been implemented as there is now some difference of opinion as to who is responsible for the footpath. It would seem while the path itself is in the ownership of North Somerset, the trees that are causing the upheaval and cracks belong to the Parish Council; so the discussion continues. The Church Warden is again keeping an eye on the situation, but there would seem to have been minor accidents already and this is a worrying situation.

Penny Robinson

Play Area

The play area continues to be a very popular recreation area for families and children of all ages. On Thursday evenings it provides a popular open-air social venue for young people from the revitalised youth club. On Tuesday summer evenings the Brownies are also able to safely run off their excess energies.

A new (Smiley) waste bin was installed in the summer and this has helped reduce the amount of litter. However, there still appear to be lots of children and adults with holes in their pockets!

In June the park passed its ROSPA inspection and continues to provide safe play for our children. The play area is now regularly inspected and maintained by John Hurcombe, our Parish Ranger.

Mark Howe continues to provide an excellent grounds maintenance service with regular grass cutting throughout the year. Generally the park always looks tidy. It is wonderful to see this green heart of the village so well used and enjoyed.

Other open spaces

In the autumn the Combe Quarry area received a serious three day clearing by Mark Howe. Brambles and nettles were scrubbed out and removed. Dozens of saplings and shrubs cleared away to allow more light and access into the whole site. Hopefully, we will begin to see more naturalisation of the bulbs and flower seeds that have been planted in recent years.

The Spring and Autumn clean-ups and planting continue to be supported by a regular group of stalwart volunteers, with material help from North Somerset Council and Sanders Garden World. Thanks go to all those volunteers who help make our village a tidier and more colourful place to live in.

Rubbish dumping and abandoned cars down Accommodation Road and in the Roman Road lay-byes remain an occasional eyesore, and create a costly clean-up problem. The community needs to be vigilant in maintaining a look out for such antisocial behaviour. Our new Parish Ranger will help the parish council and North Somerset Council to keep on top of this perennial problem.

Keith Pyke

CORONATION HALL MANAGEMENT COMMITTEE

The Coronation Hall Management Committee has continued to invest in the Coronation Hall and Jubilee Room by making further improvements for the enjoyment of the residents of Bleadon and surrounding areas.



Improvements completed in the past year include:

- Redecorating the interior of the Coronation Hall
- Enlarging the storage room in the Coronation Hall to accommodate the large table trolley
- Installing new fire doors
- Installing the new Rangemaster cooker in the main kitchen
- Installing a new sound system in the Jubilee Room
- Maintaining and resealing the wooden floor in the Coronation Hall
- Installing new washbasins, taps and vanity tops in the Coronation Hall toilets
- Obtaining 150 new padded chairs for the Coronation Hall

Our objective is to be self-financing for all normal running costs which are funded from hall hire charges, income from the Village Market and fund raising events. However, for major capital items or projects we have to obtain external financial assistance and for this we are grateful to Bleadon Parish Council and North Somerset Council for their continued support. The Hall Committee also wishes to acknowledge the generosity of local businesses who have kindly offered their products or services at reduced prices in recognition of the charitable status of the Coronation Hall. Nevertheless, the cost of these improvements is still a significant sum of money amounting to £11,000 in the past year.

The Hall Committee is pleased to report that the Coronation Hall and Jubilee Room are being used by a growing number of organisations and also by a wider range of residents for their special family events including Christening celebrations, children's parties, wedding anniversaries, special birthday parties and family gatherings after funeral services at the Church. Every booking helps to maintain and improve the facilities of the Hall. The monthly Village Market organised by Joanne Jones and other fund raising events in the past year, especially Ballroom Dancing organised by Les Masters, have been extremely successful and have generated additional income of some £5,400.

The Hall Management Committee wishes to thank all the volunteers, the user groups and the residents of Bleadon for their continuing support.

Clive Morris

HIGHWAYS AND FOOTPATHS

During the year ending April 2006 there have not been any major improvements to roads within the village. Bleadon Road continues to deteriorate but is not deemed as being serious enough by the Highways department to warrant attention at the moment.

On the whole the conditions within the Parish are good. There is a continual assessment of the roads and footpaths within Bleadon and, as necessary, the Highways Department Patchwork Gang is informed of deficiencies. If the council or general public are aware of any locations requiring attention, these are gratefully received and will be acted upon.

The Bus stop area by the Catherine Inn is a significant scheme that has received special attention. The work is expected to include the reinstatement of the verge, a new footpath and bus pull in adjacent to the post office. We await confirmation of the proposals and we look forward to this area of the village being improved in the near future.

Additional dropped kerbs are also due to be installed along Shiplate Road with more being constructed as funds become available within the North Somerset budget.

As a result of the works in Banwell, Bleadon is yet again subjected to additional traffic. This is the third year that we will suffer disturbance. As previously noted, unfortunately there is little the Parish Council can do other than to monitor the situation.

I am glad to summarise that the general condition of the roads and footpaths is higher than average, but a continual process of observation and, where necessary, submission of reports to the Highways department is required.

Justin Harvey-Bennett

VILLAGE NEWS MAGAZINE

The News has had another good year and has attracted several new advertisers, many of them small local businesses, and I hope that they will continue to support us in the coming year. We have introduced a two tier system of advertising rates so as to give advantage to those living in Bleadon. I am looking into obtaining further 'sponsors' to help ease the cost of printing which I'm afraid is escalating.

Once again I am indebted to Marshall's for their continuing sponsorship of our photo page; this feature has been well received by the villagers and has attracted interest from far and wide. Each Magazine is put onto the Parish Council website as it appears, and I continue to receive letters and e-mails from ex-Bleadon residents who are interested in the affairs of the village.

The Newsletter was entered into a competition and received a letter of commendation.

My thanks once again to John Hickley for his original cover designs and to all those who, every quarter, deliver the News to the residents, and of course to the regular contributors, without whom there wouldn't be any news!

Penny Robinson (editor)

FOOTPATHS AND BRIDLEWAYS

Again an uneventful year for Footpaths and Bridleways with only a few applications for changes to existing footpaths.

Set out hereunder is the schedule of works carried out in the last twelve months.

Right of Way AX6/8:-

Purn Hill

G.R. 3329 5734 Old stile removed & replaced with new gate.
Stone steps from field up to gate to allow easier access.

Purn Hill

G.R.3330 5708 Old stile removed & replaced with new gate.

HEARING SERVICES

R Gethin RHAD MSHAA

40 Meadow Street, Weston-super-Mare

01934 620376

Home Visiting Service Available

gfs

print

unit 7 • warne park industrial estate • warne road
weston-super-mare • north somerset • bs23 3tp

design • reprographics • print • finishing

- t = 01934 622409
- f = 01934 622409
- e = gfs@gfsprint.co.uk

QUALIFIED ELECTRICIAN

(EST. 1995)

Steve Insley

WSM 812709

07971 413603



*No Quotation Charge
No Call Out Charge
No Job Too Small
No Obligation - No VAT*

Electrical Installation Work (Minor Works Only)

- Security Lights • Extra Lights • Extra Sockets • Telephone Extensions •
- Replacement Fittings • Door Bells • Fault Finding ... Etc. Etc. •
- Full Apprentice Served JIB Graded Electrical - City & Guilds - 16th Edition Regs •

Right of Way AX6/10:-

Rear of Manor Grange	G.R. 3362 5725 Two old stiles removed & replaced with two gates.
Junction with Celtic Way	G.R. 3402 5726 Old raking ladder removed replaced by flight of wooden steps with platform.
The Dring	G.R. 3408 5746 Old stile removed and replaced by gate.
North of The Dring	G.R. 3414 5738 Old stile removed and replaced by gate.
North of The Dring	G.R. 3420 5750 Old stile removed and replaced by gate also flight of stone steps, leading up to this gate, replacing old wooden steps built in 1994. Felling of dangerous trees and scrub clearance.

Right of Way AX6/12:-

South Hill	G.R. 3465 5661 Old stile removed replaced by new gate. Stone steps built to allow easier access.
River Axe South Hill Farm	G.R. 3457 5640 Old metal farm gate removed from bridge new 'walkers' gate installed. This is a 13ft. metal farm gate incorporating a self closing smaller gate. The main gate can be chained shut but still allows unhindered access for walkers.

Right of Way AX6/14:-

Near Caravan Park	G.R. 3324 5675 Repairs to broken boards on bridge.
-------------------	--

Right of Way AX6/16:-

South Hill Near the Veal	G.R. 3456 5683 Old stile removed replaced by kissing gate. Stone steps from road up to gate installed.
--------------------------	--

Right of Way AX6/22:-

Shiplate Road	G.R. 3460 5688 New kissing gate installed.
---------------	--

Total of eleven gates installed during the year. Seven more gates will be installed at various locations in the parish in the near future. On going path clearance of vegetation and fallen trees etc. carried through the year.

Rob House

ALCA (Avon Local Council Association)

ALCA has continued to provide an excellent back-up and co-ordination service for all the Local Authorities in the old AVON area during the past year.

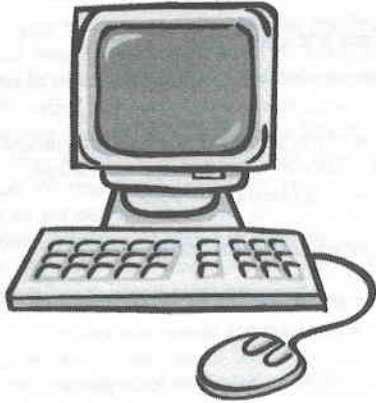
One of their most valuable functions is to monitor all Government legislation which affects local authorities and provide advice to Parish Councils about its implementation. A typical example being the Racial Relations Act 1976 and Race Relations (Amendment) Act 2009.

The Amendment Act strengthened the 1976 Act and extended it to include the Police and Public Authorities including Parish Councils. Under the Act an enforceable duty was placed on all government authorities to:

- 1) Eliminate unlawful racial discrimination
- 2) Promote equality of opportunity
- 3) Promote good relations between people of different racial groups.

The Act protects people from discrimination in four main areas and gives them legal remedy should they feel they have been discriminated against. The key areas are:

- 1) Employment
- 2) Housing
- 3) Education
- 4) Access to goods, facilities and services.



www.xscomputersupplies.com

CDr, DVDr, Ink Cartridges, Hardware
Unit 8 Purn House Farm,
Bleadon

Tel. 01934 811155

Hours of business:-

10.00am – 5.00pm Weekdays

10.00am – 2.00pm Saturdays

WANTED

China Glass, Bric a Brac
Old Hallmarked Silver
Old Jewellery
Silver Plate and Cutlery
Tea & Dinner Sets
Medals, Swords etc.
Old Diamond Jewellery
Grandfather Clocks
Oil Paintings (any condition)
Old Picture Frames
Water Colours
Walking Sticks, Stick Stands
Blue & White Pottery
Silver Photo Frames
Royal Doulton, Worcester
Clarice Cliff Pottery
Ruskin, Moorcroft
Leather Bound Books

OLD

Antique Furniture
1920's and 1930's Furniture
Inlaid Furniture
Hallstands, Sideboards
9 Drawer Desks
Chests of Drawers
Display Cabinets
Bookcases, Bureaux
Round Tables
Sets of Chairs
Wall and Mantle Clocks
Barometers
Carriage Clocks
Barley Sugar Furniture
Wind up Gramophones
Musical Boxes
Sculpture, Bronzes
Extending Tables

WE WILL ALSO PURCHASE ENTIRE CONTENTS

WINTERS ANTIQUES

Weston-super-Mare
For A Prompt And Personal Call
Tel. 01934 814610



Sell with confidence to us
We are L.A.P.A.D.A. Registered Members
you can rely on us for good advice



MR RICHARD WINTERS
WILL BE PLEASED TO CALL ON YOU



**IF YOU OWN A DOG PLEASE DO NOT ALLOW IT TO FOUL THE
FOOTPATHS AND VERGES OF OUR VILLAGE. THE RESULTING
MESS IS UNSIGHTLY AND A SOURCE OF INFECTION.
BE A GOOD CITIZEN AND CARRY A POOP-SCOOP OR A
PLASTIC BAG AND TAKE THE MESS HOME.
PLEASE DON'T LEAVE IT FOR OTHERS TO CLEAN UP.**

Examples of cases that have arisen recently are:

- 1) Planning issues relating to Gypsies/ Travellers
- 2) Unfair treatment of European workers in respect of pay and conditions.

It also examines proposed legislation and makes representations via the National Association of Local Councils.

Currently the Government is carrying out a wide ranging review of the structure of Local Government to:

- 1 Reduce the number of Councils and cut out the complexity of many of their operations.
- 2 Bringing Government closer to the people by "Empowering Neighbourhoods."

This includes:

- a) Formalising the rights of Local people to trigger enquiries into local issues.
- b) Extending the neighbourhood policing approach.
- c) Extend and strengthen petitions so that people are able to force issues onto the council's agenda.
- d) Extend the use of satisfaction surveys.
- e) Extend the use of delegated budgets for local councils to spend on local projects in consultation with the community.
- f) Extend the use of neighbourhood charters, which set out the responsibilities of service providers and residents for keeping the neighbourhood safe.
- g) Transfer of the management and ownership of assets to community groups.
- h) Giving new powers to strong parish councils, for example greater rights of representation in decision making to complement the right to issue Fixed Penalty Notices.

The outcome of the consultations is expected to be: the elimination of one tier of Government for example the County Councils, an amalgamation of some District Councils into new unitary authorities (back to Avon?!); increase in the role and responsibilities of Parish and Town Councils. The Office of the Deputy Prime Minister has asked for views on the discussion paper and these are being co-ordinated by ALCA and NALC.

Members of the ALCA executive committee also play an active role on key committees e.g Regional Planning, PostWatch, Bristol Airport Liaison Committee, which discuss matters affecting the local communities in the old Avon area.

Another key area for ALCA is providing information on employment matters and levels of remuneration and expenses for local authority employees and Councillors.

They also provide a comprehensive range of training programmes for both Clerks and Councillors. Perhaps the most valuable function of ALCA is providing advice and a reliable source of information to the Clerk and the Council about any new matters raised by constituents. In particular it is able to share experience about issues that have arisen

in other areas and to recommend appropriate courses of action. This reduces the time taken to deal with issues and prevents everyone re-inventing the wheel.

Ray Hicks

1ST BLEADON BROWNIES

Bleadon Brownies remain very active in the village with the majority of the 24 girls attending Church Services and the monthly market as well as manning the park activities/games at the May Day Fayre. Brownies also made many entries in the Bleadon Horticultural Society Flower Show this year.

A waiting list of six girls is hoped to reduce as some girls will become 10 years old this year. The success of the pack in recruiting more adult leaders in the past year gives the present Brown Owl, Bella Ware the opportunity to set up a new Guides pack for 10 to 14 year olds in September this year. Bella will transfer responsibility of the Brownies to Rachel Hemmings who will take over as Brown Owl and Emma Tucker as Tawney Owl.

Two other younger women will join Bella in setting up Guides which will follow on from Brownies on a Thursday night from 7.45 pm. to 9pm.

Guides give girls leaving Brownies an alternative to attending the Youth Club. Both Youth Club and Guides leaders have agreed to share some activities in the future.

The thanks of the Parish Council go to the un-paid leaders and helpers who enable our children to develop such wonderful values and social skills.

YOUTH CLUB

This year saw continued growth in youth membership and a restructuring of the Club leadership. Usual weekly attendance on Thursday evenings (6.45-9.45) is 30 young people. The Girls & Young Women's Project has extended funding from North Somerset Council until the end of September 2006 with a regular attendance of between 12 - 15 young people on a Tuesday evening.

The new management by Suzanne Elliott, a full time qualified youth worker at Weston Youth Centre is working well. The permanent staff team now comprises Anne Fortune and Sarah Mitchell - Assistant Youth Worker. Sarah joined the team in January and the young people have taken to her readily. She has an art degree which will enable us to deliver an imaginative arts and crafts curriculum.

A third member of staff has recently been appointed and we look forward to welcoming Patrick to the team. We also have two very willing volunteers Karen Robinson and Judy Tozer, who provide essential and valued extra support.

Many activities and events are now happening together with Weston and Oldmixon - more team work is proving very successful and the young people get an opportunity of working and taking part in events together.

With the help of the Community & Probation Service the whole of the inside and outside of the club has been painted in youthful new colours. The maple floor in the main hall stripped and waxed back to its original honeyed tones. The parish council provided funding for the materials and new exterior lighting.

Other investment includes fitting new windows, kitchen door and guttering. Much of the interior electrical system has been refurbished. Malcolm and Kim Herivel worked hard over many weekends fitting a brand new kitchen and equipping it. This has led to a new enthusiasm from the young people to focus on healthy food. A visit from a nutritionist who works with Jamie Oliver helped too.

The atmosphere these days in the Youth Club is one of youthful energy and enthusiasm. Everyone involved can feel proud of way this valued facility for our young people has been reborn.

Keith Pyke.



SUE JAMES BSc(Hons) Dip.Couns. Dip.Org.Couns.

COUNSELLOR

Private and Professional support by an experienced, qualified Counsellor to help with a range of issues and emotional difficulties including:- stress, anxiety, depression, relationship problems, bereavement, confidence, and work related issues.

SAFE, SUPPORTIVE ENVIRONMENT

MBACP(ACCRED) COUNSELLOR

UKRC REGISTERED INDEPENDENT COUNSELLOR

SHORT OR LONG TERM WORK

CONTACT 01934-811685 OR 07840 867491 FOR A CONSULTATION

ADVERTISING IN THE VILLAGE NEWS (A5 Page)

Full page.....Village £50.....Non Village £75

1/2 page.....Village £30.....Non Village £45

1/3 page.....Village £25.....Non Village £37.50p

THESE RATES ARE FOR 4 INSERTIONS STARTING WITH THE JUNE ISSUE.

PLEASE CONTACT THE EDITOR FOR FURTHER DETAILS



Parish Clerk:
Bruce Poole MCMI

Balance Sheet
For the year ended 31 March 2006

Year ended 31 March 2005		Year ended 31 March 2006
	CURRENT ASSETS	
27367.72	Cash at Bank	22734.69
110.05	Debtors	35.15
500.00	Prepayments	500.00
1467.69	VAT to be claimed	2448.67
29445.46	TOTAL ASSETS	25718.51
	CURRENT LIABILITIES	
-	Creditors	207.02
7.50	Receipts in advance	7.50
-	Accruals	-
7.50		214.52
29437.96	NET ASSETS	25503.99
	Represented by	
1500.00	Recreation	1500.00
-	Staff Contingencies	1000.00
575.00	Tree Planting	-
250.00	Legal Costs	-
600.00	Interpretation Board	-
500.00	Car Park	-
-	Playground Improvements	-
500.00	Election Expenses	600.00
4500.00	Street Lights Fund	2000.00
12300.00	Wonderstone	11300.00
8712.96	General Fund at 31 March	9103.99
29437.96		25503.99

The above statement represents fairly the financial position of the authority and reflects its income and expenditure during the year.

Signed:

Books
Tombola
Cakes
Norfolk Lavender
Raffle
Cards

SSAFA
FORCES
Help

Admission: £2.00

WORKING IN
SOMERSET

THE SOLDIERS, SAILORS, AIRMEN AND FAMILIES

ASSOCIATION - FORCES HELP

Registered Charity Number 210760. Est 1885

"Coffee and Danish"

The Coronation Hall, Bleadon

Friday, 1st September 2006 - 10.30 am to Noon

MARIE'S EXERCISE TO MUSIC

CLASSES WITH
R.S.A. QUALIFIED INSTRUCTOR

**KEEP FIT & HAVE
FUN**

AT
BLEADON CORONATION HALL
EVERY MONDAY EVENING

7PM - 8PM (SLOW CLASS)
8PM - 9PM (FAST CLASS)

EVERYONE WELCOME TO EITHER CLASS
Equipment provided

ALL FOR JUST £3.00 PER CLASS
JUST TURN UP

FOR FURTHER DETAILS
CONTACT MARIE ON: -
07939038071

MARIE'S MINI MOVERS

NEW CLASSES COMMENCING
AT BLEADON CORONATION HALL

MONDAY 8TH MAY, 2006

10.30AM - 11.30AM

TO BOOK YOUR SESSIONS
AND
FOR FURTHER DETAILS PLEASE CONTACT:
MARIE KEELE
TEL: 07939038071 / 01934 623519

FIRST CLASS FREE !!

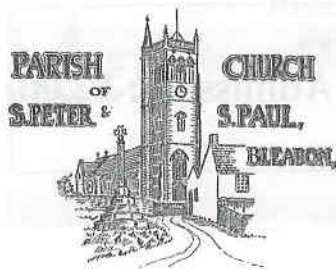


AGE:- FROM 1½ YEARS - UP TO 4 YEARS
(WITH MUM / DAD / CARER)

A VARIETY OF ACTIVITIES INCLUDING:-

RHYMES, INSTRUMENTS, INTERACTIVE
GAMES, DANCING, MINI FITNESS,
THEME DAYS

A GOOD WAY TO ENCOURAGE INTERACTION
AND SOCIAL OPPORTUNITY



ANNUAL MEETING

Following our Annual Parochial Church Meeting (APCM) on 24th April, our churchwardens for the next year are Mrs Sara Osborne (continuing) and Mr Brian Drinkwater (elected to succeed Mrs Sandra Lowton). Churchwardens are the senior lay people of a Parish Church and are the officers of the Bishop to whom, or the Archdeacon, they are required to make reports.

MAY FAYRE

The May Fayre on 1st May was a wonderful occasion, raising more than £6,000 for church funds.

I am most grateful to the Friends of the Church, and their friends, for all the hard work put in in preparation for the day and on the day itself. An enormous task. This was my 18th May Fayre, every one being an outstanding success and attracting people from miles around.

As well as the May Fayre, the Friends of the Church organise social and fund-raising events throughout the year. I am most grateful for everything they do.

WORSHIP

June begins with **WHIT SUNDAY** (4th) then **TRINITY SUNDAY** (11th). On Trinity Sunday, we welcome back to Bleadon The Rev'd Harold (Jack) Horner and his wife Eileen. Jack and Eileen had been members of our church in Bleadon, moving to the Island of St. Helena (Eileen's home) a few years ago. Jack then began ordination training and was ordained priest last year. They return to this country from time-to-time and it is always good to see them, this time to welcome Fr. Jack as celebrant and preacher.

PATRONAL AND DEDICATION FESTIVAL (Church Anniversary) 2nd July

This is the day on which we give special thanks for our church in Bleadon and honour our Patron Saints, Peter and Paul.

Instead of Evensong, there will be Songs and Hymns of Praise at 3.00pm in the Rectory Garden led by the Salvation Army Band (in church if the weather is unkind). The main Service of the day is Sung Eucharist at 10.15am.

HARVEST FESTIVAL CELEBRATIONS

The annual Harvest celebrations will be on Sunday 24th September, preceded by Harvest Supper on Saturday 23rd. More information about the supper from the Friends of the Church. At the Family Service at 10.15am we will be welcoming our new Guide Company.

LOCAL MINISTRY GROUP

Anglican churches in Weston and district have been divided into groups in anticipation of serious reductions in clergy numbers in the next few years. Bleadon has been put in a group with the Parish Churches of Uphill (including St. Barnabas Loxton Road), Hutton, Locking and Bournville (which is now a united Anglican/Methodist church).

As well as the clergy of these parishes meeting informally to discuss ways of co-operating, talks are being held to see which parishes/churches should share a priest.

For us here in Bleadon, this is nothing new as we have had similar discussions from time-to-time over the past 25 years or so.

The planned reductions in clergy numbers, together with my own expected (though not yet confirmed) retirement next year mean that we are now in a period of serious talks once again.

Whatever the outcome, the Parish of St. Peter & St. Paul, Bleadon (which includes Bleadon Hill as well as the village) will remain independent but with the priest-in-charge (rector) being shared with others. This is the case in very many other places including Lymphsham, East Brent and Brent Knoll, parishes which have shared a priest for more than 20 years without losing their identity.

Church Goer, writing in 1850, as well as telling us what a cold, ill-kept and cheerless church Bleadon had, also mentions that the Rector, the Rev'd David Williams, also had the parish of Kingston Seymour. Quite a journey between the two in those days!

Best wishes,

Yours sincerely,

David Parkinson, Rector

Tel: 01934 812297, email: Dtparkinson@aol.com

Connoisseur CHOICE S

1st Class Catering!

BUFFETS OR FULL SERVICE

MENUS FOR ALL OCCASIONS

PRICES FROM £3.00 PER PERSON

CATERING FOR ALL SIZE PARTIES!

DELIVERED ANY PLACE, ANYTIME
FREE OF ANY EXTRA CHARGE

FULL WAITRESS SERVICE SUPPLIED

COMPREHENSIVE RANGE OF
SIT DOWN MENUS AVAILABLE

VERY COMPETITIVE PRICES YOU
CHOOSE THE MENU
AND THE VENUE - WE DO THE REST

PURN HOUSE FARM, BLEADON BS24 0QE. TEL 01934 814899

WATERHOUSE ELECTRICAL & ENGINEERING SERVICES

Commercial • Domestic • Industrial Installations

Now incorporating a Plumbing & Heating Division

1 Lakeside Barns, Shiplate Road, Bleadon, Weston-super-Mare BS24 0NY.

Tel 01934 813803

Mobile 07860 597463

Corgi Registered
198748

National Inspection Council for
Electrical Installation Contracting

NICEIC
APPROVED CONTRACTORS

CHATTERLEY PLUMBING & HEATING

All types of plumbing work undertaken

- Servicing of boilers and fires
- Taps and washing machines
 - Central heating
- Bathroom installation

Free Estimates given

No call out fee

24 hour Service

Tel: 01934 812629

Mobile: 07887 768877



Tiny Toes

day nursery and baby unit

New and fully equipped

DAY NURSERY

Located in Uphill

Offering a friendly, loving, safe & spacious
learning environment for your child

For more information, our prospectus or to arrange a visit,
call us

(01934) 412779

The Old Barn, Uphill Road South, Uphill



FRIENDS OF BLEADON CHURCH

A very sincere thank-you to all the many workers, supporters and visitors who made our **May Day Fayre** such a success. You really did Bleadon proud. We have made in the region of £6500 and about 1500 people enjoyed the day. Thanks especially to the young folk, the Brownies, the Sunday Club etc They all worked very hard (as did their Mums) and they added that something extra to a very special event.

Mark your diaries for the next, not-to-be-missed events:

Friday, 23rd June Coffee Morning at 18 Bleadon Mill, the home Graham and Leoni Rogers. 10.30am to noon. Tickets at only £1.50 from Graham on 01934 811571.

Sunday, 23rd July. This is always something special. We open the **Church Tower** from 2.30pm to 3.30pm. You can climb to the top and experience the views to the Bristol Channel and beyond for £1.00. Then from 3.00pm to 5.00pm our hosts are Brian and Glenys Robinson for **Cream Teas** at Rookery Nook in Old School Lane. Tickets at £2.50 from Brian on 01934 813434 or Brian on 01934 813636.

Saturday, 12th August. Sandra is going to tempt us with one of her **Supper Evenings** in the Church Room at 7.30pm. Tickets on sale soon at £7.50.

Saturday, 23rd September. The Coronation Hall has been booked for our annual **Harvest Supper.** It will start at 7.00pm for 7.30pm and later this month we will have full details and tickets will be on sale early for this very popular event.

Saturday, 14th October. As part of the Weston Arts Festival the **Avon and Somerset Police Choir** will be singing in the Church. The tickets at £5.00 each will be on sale end August or early September. If you love Male Voice Choirs you will love this.

You will remember **Brass Attack?** They were due to perform for us last year but circumstances made it necessary to cancel at the last moment. But we hope that they will be coming back in November. Brass Band music with a difference. Having heard them you will not forget them. They are terrific.

Looking forward to 2007.....**The Hermitage Ensemble** from St Petersburg, Russia will be singing in Church on 24th May. We hope that the **Winscombe Light Orchestra** will be able to give us a date in June.

Our next meeting of Friends is in the Church Room at 10.00am on Monday, 3rd July. If you have any views or ideas on our events come and air them at this meeting. You might enjoy it.

Brian Drinkwater 01934 813636 email bleadonchurch@aol.com

I would like to thank all those who helped with the Refreshments at the May Day Fayre.

Delicious cakes were baked, ladies toiled all day serving tea and coffee, filling rolls, serving on the counter and on the till.

We made the best profit ever on our refreshments this being due to all the hard work unstintingly given.

A very big thank you to you all.

Mary Henley

DISTRICT COUNCILLORS REPORT

Since our last contribution to the Village News we have been involved in a couple of controversial issues. The first has been the rock crushing machinery installed at Marshalls Quarry, which unfortunately coincided with school holidays when people were at home trying to enjoy their gardens. The problem was exacerbated by the need to drill out some rock to make space for the machine and resulted in complaints from nearby neighbours who found a layer of ancient Bleadon dusted over their windows, cars etc.

Marshalls did respond to the subsequent enquiries made and, to be fair offered a compromise and compensation to those worst affected. Meanwhile our Environmental health Officers will continue to monitor the situation.

The second issue was the proposal by First Group to reroute the local bus on a tour of the Purn Way area, which not surprisingly has not gone down with local residents living in that area. Various options have been put forward and we will be monitoring these and hope to see a sensible solution.

By and large however our role in recent months has been to back up the Parish Council in resolving various local issues ,as explained to those who attended the really excellent Parish annual general meeting earlier this year. Nevertheless if you feel you are not getting satisfaction on matters involving the District Council, remember we are only a phone call or e-mail away. Being Chairmen of the Strategic Planning/Economic Development/Tourism and the Community Services Scrutiny Panels respectively, we are always in a position to help.

elfan.ap.rees@n-somerset.gov.uk

ian.peddlesden@nsomerset.gov.uk

Dear Editor

How about a Name & Shame section in the Newsletter for those dog owners who still insist on letting their animals foul the Village and feel it is beneath them to clear up the offending mess.

The worst area seems to be the private road at the end of Purn Way, leading to the footpath to the Village. I have three dogs of my own and always clear up after them - it is nothing to go out armed with a few bags!!!

Jackie Henley
The Paddock. Rockville.

1st BLEADON BROWNIES

Brownies*

The Brownies have a very active programme in Bleadon. Not only have they been fundraising at the village monthly market but they have attended Bleadon Horticultural Show and won several junior prizes. Mothering Sunday was a time for the Brownies to attend church and tell their mums how much they loved them. The May Day Fayre was great fun for the Brownies as they helped man various activities in the park.

With a sponsored sleepover, ten pin bowling and trip to Blagdon Pumping station in the summer months the Brownies continue to have fun.

During the last year Rachel Hemmings and Emma Tucker have been training to become Guiders which have been highly appreciated by Bella and Brownies. The activities they have organised in that time have been wonderful.

On Tuesday 9th May both Rachel and Emma were enrolled in true Brownie style with their Brownie daughters assisting. They said their Promise in front of all the girls and their own families. The evening concluded with a celebration party and Bella handing over the running over the pack. Rachel has now taken up the role of Brown Owl with Emma as Tawny. They remain supported by Karen Kelson and Helen Woolan as well as the Young Leaders Katy, Emily, Danny and Erica.

***Rachel can be contacted on 01934 811891
for information about 1st Bleadon Brownies.***

1ST BLEADON GUIDES



Guides have been missing from the village for many years and Bella now has the opportunity to build up a Troop in Bleadon with the support of two new guiders in training, Emma Parslow and Sarah Williams.

Guides will continue straight after Brownies on a Tuesday night during term time commencing 7.45pm on Tuesday 12th September in the Jubilee Room.
A dedication service at the church will be held two weeks later on Sunday 24th September.

It is planned that Guides will join Brownies at the monthly market and special church services and will be seen around the village undertaking various types of community work e.g. helping the village ranger and anything they feel is important locally.

If your daughter is between 10 and 14 years old and would like to join Guides (previous Brownie experience is not necessary!) please give Bella Ware a call on 01934 811545.

A warm welcome awaits adults who would be willing to help now and again with special interests.

BLEADON SHORT MAT BOWLING CLUB

This has been another session full of activity and activity. In spite of the cold weather attendances have been very good.

Before we can play we have to unroll two, forty foot carpets, and afterwards we have to wind them up. This is a strenuous process and as we get older it does not get any easier. A local supplier demonstrated to us an electrically powered winding machine. This machine certainly make the task less irksome, and required much less strength. As a club we determined to get one. The main problem was the cost. An application was made for a Lottery Grant and after a nail biting wait we were told that we had been successful. We then approach the hall management committee for permission to store the machine in the hall. Not only permission but much useful help was given. We thank the committee for making it possible for the club to have a machine. A short wait and the machine was delivered and we all now benefit from having it. (see Photo)

On a sad note many of us attended the funeral service of our treasurer of many years, Arthur Greaves. We extend our sympathy to Joyce and his family.

On a happier note we shared in the delight of two of our members Ken and Kate Evans, when they celebrated their diamond wedding.

By way of a change we had a fish and chip supper on 17th March which everyone enjoyed. The league has now finished. We were very keen to see how we had fared, as this was the first time we had entered two teams. The Owls finished 7th in the half way position. While our team of learners, the Buzzards, gained valuable experience and finished the season very strongly, which augers well for next season.

We shortly pack up until next September, when we shall be pleased to meet any one who would like to have a go.

Fred James. Chairman



Recollections of Uncle Bill ...A Short Story

WILFRED 'BILL' MILLWARD BEM has died aged 86. Bill Millward was a lifelong Socialist, and an active member of the Socialist Party of Great Britain. A stalwart Trade Unionist he was Works Convenor at the City Docks for 25 year and sometime Secretary of Bristol Rovers FC. Changes at the Docks coupled with a the gradual move to Portbury and reduction in the workforce, gave Bill Millward the opportunity.....

Seeing as I'd written a reasonable obituary, the Editor said, I could also cover the funeral. After the Service, if I limited my stay at the Working Mens' Club to just that needed to learn the principle mourner's names I might still manage to catch the City game. But something the Vicar said intrigued me and I wrote it down; 'Bill, that ingenious man of diverse character, whose luxuriant imagination was never satisfied with mere dull facts.' I noticed smiles and nudges amongst the family and congregation at this and I began to think there might be a story here; perhaps there was more to Bill Millward than most people realised. Cub reporter, 'Scoop' McBride, was on the case.

The funeral had been particularly well attended by family, friends and former workmates. They followed in small separate groups as the coffin was carried out into the churchyard; some seeking comfort but soon there was chatter and some laughter as the tension eased. The vicar opened his book and began to read, his breath hanging like steam in the clear winter air. The gaunt-looking undertaker and his team moved as though in a well rehearsed dance, people gathering to offer final condolences then cars moving off purposely to the nearby club. It was packed. Bill's folk had gravitated to one corner, grouped noisily in a haze of cigarette smoke. The bar was busy, glasses and bottles already jostling for table space. I introduced myself and was immediately led to 'Auntie' Beatrice, his sister.

"Her's the one these best talk to, she can tell thee a tale or two," I was advised, as I was ushered through the throng. "Hey Beet! Here's a reporter looking fer some gossip 'bout Bill!"

Beet gave me a wide grin, waving a bejewelled hand in invitation. "Sit down here my lover," she rolled her eyes, "my what a 'andsome young man coming to talk to old Beet." A pint appeared in front of me and Beet moved closer, "What paper bist from then?"

I quoted the City's premier daily, "I did Bill's obituary," I added, "thought I could do a follow-up. Blonde-streaked hair awry, her face flushed and black top unbuttoned, she fanned herself with a beer mat. I

"Well there's no doubt he were a right old rascal. But there was no 'arm in him, save for 'ating the City of course. No, there was no 'arm in him. Mine you tell 'em that."

Interrupting my assurances she loudly addressed the company, "D'you remember the time he dressed up as a Bishop?" She turned to elbow me sharply in the ribs, "Took us to the Grand for a slap-up meal!"

"Well as long as he paid," I said.

Beet choked on her drink and the onlookers laughed loudly, successively slapping her back and mopping her brow, "Well somebody did," she croaked, "but weren't Bill, he was tight as a mermaids wotsit."

Anecdote followed anecdote, the reminiscences familiar and well loved, family and friends dissolving into helpless laughter. Much of it was lost on me, a stranger in the city, its unique accent thickened with the effect of drink; I put my notebook aside.

Bill, it seemed, had an inclination for dressing up though 'nothing dirty mine.' Vicars, sea captains,



bus drivers, town criers, masters of foxhounds, all grist to Bill's masquerading mill "What did he do in the war?" Thinking he might have missed the glamour of a uniform. "Down the docks like the rest of us," answered several. "Did our bit through the raids an' all."

"Got a medal after, when 'e was over the Rovers," said one.

"Should've got five years mate, state they was in when he left," said another.

"You writin' this down?" Beet inquired as another pint was pushed my way. She lowered her head, "Dreadful liar Bill," she murmured, barely audible in the racket but sounding sad for the first time. "No 'arm in it mine an' the babbies loved him. Never 'ad any of his own," she paused reflectively, "might 'ave been different otherwise." Her eyes moistened and a thin tear streaked her painted cheek. "If he'd been to places an' done the things he said, he'd 'ave needed two lifetimes." She suddenly brightened, "D'you know he arranged his funeral to be on the same day as a City home game? 'Keep a few away from Ashton Gate' he said 'I'll do 'em a last favour'."

Beet lurched to her feet, bottles and glasses scattering, "Come on, what about a song? Can't let the old bugger go without a singsong."

Beet was stridently leading into *Goodnight Eileen* when I rose and eased away.

At the edge of the group stood the younger family members and as I smiled my way through the throng one grasped my arm.

"Steve," he said in introduction, "I was with him when he died."

He accompanied me toward the door, nodding back to the family, "Drunken old gits. They'll never know what Bill meant to us kids. Pure magic he was, his stories kept us going when there was sod all else. He'd come up most nights, play us a tune on his old squeezebox and tell us these tales

about the things he'd done the places he'd been and the people he knew. Fell asleep to the sound of his voice many a time. Believed everything he said of course, and why not? Sometimes it was embarrassing though," Steve smiled. "Told us he'd been the first man on the moon, described the journey, the walking about up there and everything.

Some time later at school we was asked in class if we knew who the first man on the moon was. 'Course I said it

was my Uncle Bill, got a clip 'round the ear for that and a lot of Mickey taken afterwards. But he could do no wrong with us kids, even when we eventually found out about the stuff he told us. Some said it was just a load of lies of course. But his lies were never hurtful, the opposite really. He never spoke bad about anybody, he told us his stories because he knew they gave us pleasure."

"What happened at the end Steve?"

"A lot of people came to the hospital when they knew he was dying. He was a popular bloke and well known. Councillors, the local Labour people and some Socialist chaps come down from London. He got very tired come the end and I felt he just wanted to be quiet. I was with him for an hour or more sat in the dark saying nothing, thought he was asleep. When I got up to go I saw his eyes were open. 'Thanks Steve' he said, 'be your own man.' He must have died soon after."

Beet's rendition of *You'll Never Walk Alone* could be heard above the hubbub as two or three younger relatives joined us. They nodded as Steve continued.

"We're family too, people that can be hurt. We loved him see. Put him on a pedestal and it's only us that can knock him off. Be careful what you say in the paper."

I left then, hoping I could catch some of the second half of the City game, but for me at least Bill Millward would Rest in Peace.



END



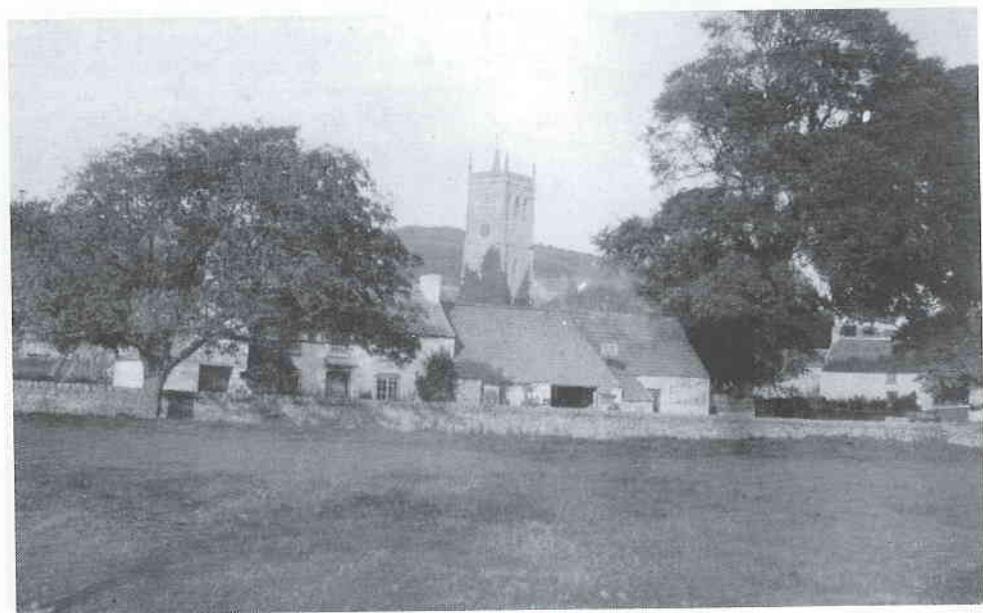
Bleadon 1927



Bleadon circa 1950's



Celtic Way & Queens

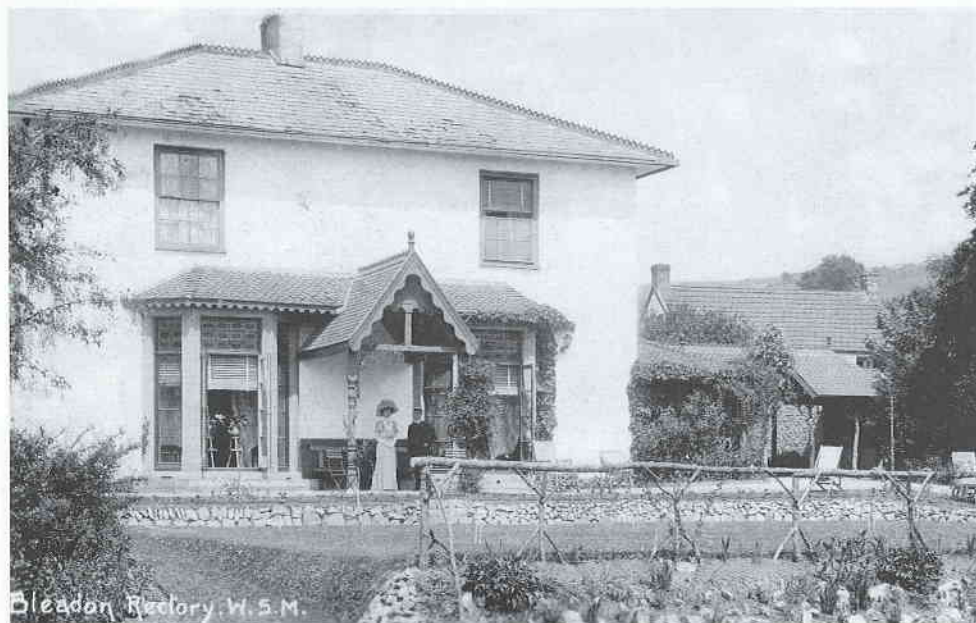


Towards the Church



Mulberry Farm Guest House, Bleadon c. 1920
Named after a 300 year old Mulberry Tree growing in the garden

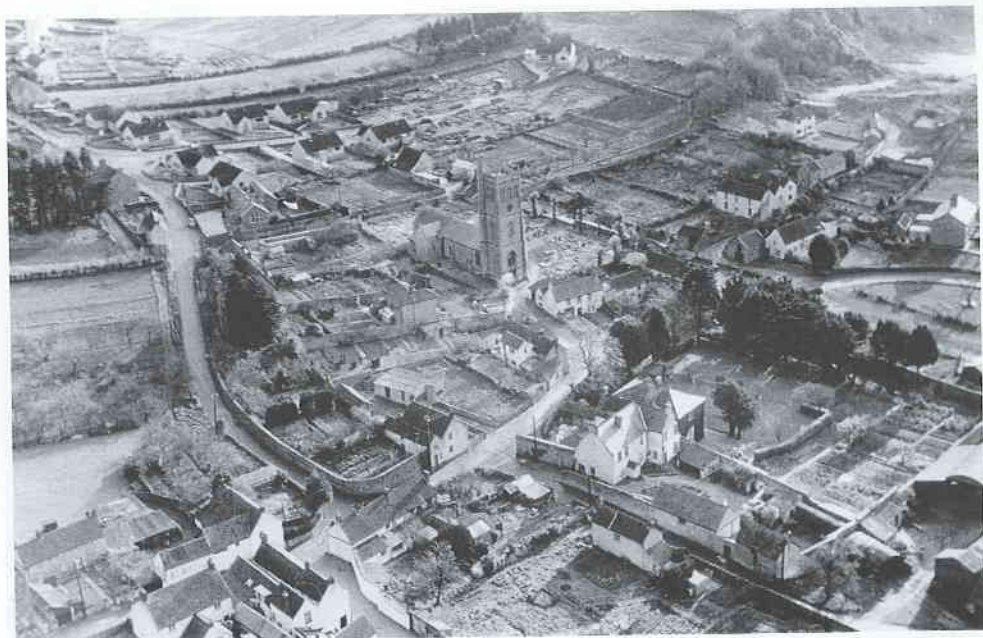
Mulberry Farm



Rectory



Aerial from South Hill



Aerial Village

THE ADDITIONAL COST OF REPRODUCING THESE PHOTOS HAS BEEN MET BY THE GENEROUS SPONSORSHIP FROM MARSHALL'S QUARRY

Bleadon Post Office and Country Stores Tiffin Coffee House

We have completed our first year in the new shop and café, and we are very glad to have received so many lovely comments- thank you all for those. We are now concentrating on widening our appeal in a few other directions. We are now stocking many more interesting lines and are now open 8-4.00 on Saturdays. If you have any favourite items which we haven't yet got in, do ask Andrew to see if we can find a supplier! 01934 815584

At Tiffin's we have just begun to hold small Craft birthday parties for children, on weekdays after school. For example we have hosted jewellery parties for around 6-10 under 10's and with wholesome party food which has been enjoyed by children and adults alike. In fact if you have any special occasion which we could help with, have a word with Mandy. 01934 815582

Alistair

For Breakfast, Lunch & Tea - Come, relax and enjoy the friendly atmosphere and don't forget you can use the PC at the same time.

Thank you for your continuing custom, please keep buying locally.



A SAHARA MARATHON

A 120km extreme foot race, in an extreme environment in extreme weather conditions.

Having participated in this race to prove to myself these challenges can be overcome by anybody with determination and also to raise money for the charity, Facing Africa, a little known organisation that fights against a disease called NOMA. It is a gangrenous infection that only strikes children below the age of puberty and kills 450,000 each year. The 10% that survive are left with grotesquely disfigured faces and an inability to eat, speak and in some cases even open their mouths. The disease is easily preventable with antibiotics and good nutrition.

100KM DEL SAHARA

An early morning departure from Bristol airport started an adventure that was to last one unforgettable week. All competitors were to meet at Rome airport and fly together to our overnight hotel in the island of Djerba, southern Tunisia. This was to be our last taste of comfort until we returned in six days time.

The following day we were loaded into two coaches then set off on our journey of 150km to the edge of the Sahara, destination Chinini, listed as a world heritage site. Here we set up camp with each group allotted a tent which was barely big enough for the six of us, made of sack cloth with two wooden stakes and four ties, one in each corner. The one side was completely open to the elements. This was to be our mobile home for the next five nights.

Day one race day 28km 435metres of climb.

We awoke to a wonderful morning, temperatures of 26 degrees and no wind. The start of the race took us through Chinini and then into the long climb to the top of the plateau. This pass is only negotiable on foot or by camel. Reaching the top was like landing on the surface of the moon, totally completely barren. We continued through this landscape until we reached the finish of this leg and camp for the night. I finished eleventh which I was very pleased about, especially with all those youngsters hot on my heels!

Day two 16km

We woke after a night of horrendous sandstorms, which left many tents flattened, luckily ours managed to withstand the onslaught, but none of us had got much sleep that night. This was no four star hotel, modern amenities are sparse. The lack of toilet facilities or hot water was an eye opener but we did the best we could. We set off into a strong breeze, at the beginning of this leg, mostly on stony tracks with the sand blowing constantly causing mini sand dunes across the path. Managed 13th position at the end of the day run.

Day two Night run 8km

The slowest runners left first in pairs at one minute intervals. This was based on the finishing times of the first two runs. We ran in total darkness using only head torches and chemical lights fixed to our backs. It was an amazing experience running through the desert in complete darkness and miles from civilisation. Managed to finish 14th and somehow we lost no one!

Day 3 Marathon day

The field was split into three groups, setting off at one hour intervals. A bright sunny morning deteriorated into the worst sandstorm the area had seen for ten years. We battled the whole twenty six miles into the wind, which with it carried fine sand that managed to penetrate everything. This was definitely extreme running! On finishing I found I was temporarily blind in one eye, the camp doctor spent some considerable time treating it to restore my sight. Luckily I was given the go ahead to race at 7 am the next morning. I was placed at 26th, not my best performance.

Day 4 28km Sand dunes day

We started slowly as we all knew it was going to be an extremely tough day. On reaching the sand dunes at 10km, I discarded my running shoes and proceeded to climb the 10-12 metre dunes bare foot. Removing the shoes was a good decision, as I was able to work my way through the field coming tenth for that day. This position brought my overall standing to a very respectable fourteenth. The final finish line was at an oasis called Ksar Gilane where there is a welcoming hot spring. As I finished another severe sand storm blew up bringing visibility down to a few metres. The remaining runners had to follow the tracks that the quad bikes had made to give them a sense of direction. Blissfully unaware of these circumstances I spent the next two hours soaking in the hot spring, whilst the organisers struggled to get everybody home..

The last day was spent travelling back by four wheel drive vehicles, to our original hotel which was a gruelling six hour journey. We were very pleased to use the hotels amenities of hot water and real toilets. The organisers arranged a party that night which bought an amazing week to a close. My total time for 120km was 11hr 18mins and 22seconds, I am sure it can be improved upon another year. 98 competitors started. 88 runners and 10 walkers finished.

A well pleased,

Roger Hart.

Manor House

If anybody would like to contribute to Facing Africa their web site is www.facingafrica.org
Or contact me at Manor house Bleadon rd. e mail roger@manor-house-cottages.com



Bleadon Ladies Club



2006 is proving to be a very successful year for our club with lots of good speakers. We have also welcomed many new members. We have had talks on "Tyntesfield House, TV make up, British Piers to name just a few.

July 11th Bring and Buy and a Beetle Drive

August 8th Annual Outing. This year we are going to Ottery St Mary to have a look around the nursery, and afterwards to Sidmouth to take in the sea air.

September 12th ..."New England in the Fall" by Mr Gordon Tarrant

The club meets the second Tuesday of the Month at 2.30pm in Coronation Hall. If any ladies would like to come and join us you will be most welcome. For more information ring **Barbara on 814362**

THE NEXT PRODUCTION

by Brian Pike

Acting is a basic human activity, and the local dramatic production is part of our way of life. Let us see how such events are conceived, grow, and finally emerge into the light of day through the eyes of one of the participants.

It is drama time again and a very well attended meeting is held, and great enthusiasm is shown for the project. You have been a member for a few-Tears and played two or three moderate sized parts. Your experience as a player and committee member is recognized and you are proposed and unanimously elected to produce the next play. It is quite simple for someone with your knowledge of plays and experience as an actor; all you have to do is cast the play making the best use of the mass of enthusiastic talent available, guide the actors through their parts and just co-ordinate the efforts of the band of eager back stage helpers. You have thirteen weeks and you are looking forward to a very enjoyable relaxed and rewarding period in your life.

Within two weeks a play has been chosen and a cast selected. Now for the first minor problem. The stage manager resigns within minutes of being appointed because his wife has not been selected; and she also withdraws her assistance. However, not to worry, you find another stage manager and rehearsals start. Everyone is somewhat slow in grasping both words and actions, but progress is made.

After another three weeks, you find to your utter horror that a neighbouring society is already well into rehearsal for the same play to be presented a week earlier than your version. A meeting is called with a more limited response this time, but nothing is decided and it is left to yet another meeting. A vast selection of plays are read and re-read, discussed, and sadly rejected.

After a fortnight of constant meetings and readings, another totally different play is chosen, and after a very rapid re-casting you have six full weeks left for rehearsal.

Once again all is well and the new diminished band devote themselves wholeheartedly to

the task ahead. That is except for one who is very enthusiastic about taking part, but somewhat reluctant to attend any rehearsals for a variety of reasons. Two more weeks pass by with this problem whereupon you inform the actor by post that he has been replaced. Next morning your 'phone rings and you are treated to a stream of abuse which you cut short by replacing the receiver forcibly. Well, he wasn't a real friend anyway.

The new stage manager has gone to Spain on holiday and so far has not started painting the scenery. However, he should be back soon, unless as rumour has it he has been forcibly detained. Eventually he reappears and then works non-stop in your garage, where the scenery has been stored whilst your car has been standing out in the rain. The neighbours wonder about the noise and are amazed by the futuristic paintings. Now with work resumed on the set and seventeen days to go, one of the major performers announces that he cannot learn his lines and will not be able to take part. Yet another substitute is found and retires for the week-end with a script and a wet towel round his head. However, the remainder of the cast are rehearsing well, but if only they would all attend on the same evening! The play seems very flat but should liven up on stage.

Dress rehearsal commences, and the stage manager is struggling to make two pieces of scenery do the work of three, the lights illuminate everything except the areas specified by the lighting plot, costumes don't fit, the cast forget lines, falls over furniture, swear, cry and smoke incessantly. One sits in a corner shivering with German Measles. The action totters along unsteadily for a short while until the Vicar enters on Page Ten recites his speech from Page Eighty-nine and brings the first run through to a premature conclusion.

You sit as if drugged; and swear that this is the very last time, never again will you succumb to flattery. You contemplate emigration or suicide or even both. This is going to be an AI disaster.

You go to the theatre next evening with your coat collar turned up in case you are recognized and sit near an exit, just in case.

The curtain rises and it is as if someone had waved a magic wand. The set stands firm and complete and looks real, the cast enter on cue, engage in sparkling dialogue and then exit smoothly. The audience sit attentively, pleased, amused, appreciative. The final curtain drops amidst tumultuous applause, and you are called upon to make a speech. You thank all concerned for their co-operation, loyalty and wholehearted support and congratulate the cast upon their well-earned success.

Afterwards whilst soothing your shattered nerves with a well-deserved drink the Chairman asks you your opinion of Peer Gynt. By now mellow and relaxed you state that it is a play about life and mankind, too long but capable of being trimmed to size, and with a talented cast and an experienced producer ... too late, you are already on the slippery slope towards the next production!

BLEADON PLAYERS

Another production over and once again 'Thank You' to our wonderful audience - and JB Priestly. We laughed our way through all rehearsals. He was such a brilliant playwright. What next? Well we have had our first meeting and come up with dates -September 15th/16th. Coronation Hall is booked, but at the moment we have absolutely no idea what we are going to do. It's 'watch this space time' 'Whatever we do tho' it won't be Peer Gynt!



A LIST OF ORGANISATIONS WHICH REGULARLY USE THE CORONATION HALLS



		Contact	
Mondays			
2-5pm	Bleadon Bridge Club	Mr D Munden	812772
10am-noon	Marie's Mini Movers**	Mrs M Keele	07939 038 071
7-9pm	Exercise Class **	Mrs M Keele	07939 038 071
7.30pm	British Sugarcraft Guild	Mrs F Hatcher	620784
1st Monday	W.S.M. Branch		
7.30pm	Bleadon Parish Council	Mr B Poole, Clerk	01278 787555
2nd Monday			
Tuesdays			
10am-noon	Tatty Bumpkins**	Mrs S Hancock	815157
2-4pm	Bleadon Ladies Group	Mrs B Pugh	814362
2nd Tuesday			
2.30-4.30pm	Bleadon Short Mat Bowling Club**	Mrs J Tiney	813893
1st,3rd,4th Sept-June			
6-7.30 pm	Bleadon Brownies**	Mrs B Ware	811545
7.30 pm	Bleadon Photographic Group	Mr K Tapley	623877
1st,2nd,4th,5th Sept-May			
7.30 pm	Bleadon Horticultural Society	Mr C Cudlipp	813152
3rd - Oct-June			
Wednesdays			
10am-noon	Infant Welfare Clinic	The Health Visitor at the Clinic	
2nd & 4th	& Toddler Group		
10am-noon	Toddler Group	Mrs E Knight	625089
1st,3rd & 5th			
1.30pm	Yoga Class	Mrs D Marsh	750438
7.30pm	Bleadon Players/Rehearsals	Mrs S Kelly	645135
7.30pm	Come Dancing	Mr L Masters	811976
(term time)			
Thursdays			
10-12 noon	Art:Watercolour painting class**	Weston College	01275 810659
8.00pm	Bleadon Folk Dancing Group	Mrs J Thorne	814007
1st & 3rd Thurs Sept-June			
7.30pm	Bleadon Sugarcraft Club	Mrs P Webb	01278 684484
4th Thursday			
Fridays			
2-4pm	Bleadon Friendship Club	Mrs M Cullen	813284
7.00pm	Short Mat Bowling Club**	Mrs J Tiney	813893
Sept-June			
Sundays			
2.30	Short Mat Bowling Club**	Mrs J Tiney	813893
Sept-June			

**in the Jubilee Room - The Halls are available for hire by private individuals or organisations.
There is a reduced rate for Bleadon residents. **ENQUIRIES: 812370**

WHAT'S ON - IN THE CORONATION HALLS -

MAKE A NOTE IN YOUR DIARY NOW!

Date	Time:	Event:	Organisation/Contact:
Friday 1st Sept	10 am	SSAFA Coffee Morning	Mrs P Skelley 815331
Saturday 2nd Sept	2pm	Flower Show	Bleadon Horticultural Soc. 813152
Saturday	7.30pm	Harvest Supper	Church Friends 811490
Sat. 21st October	7.30 pm	CONTACTUS - Talk on local History	Mr J Thomlinson 812436
Sat. 4th November	10am-noon	Coffee Morning	Friendship Club 813284
Sat. 25th November	7.30 pm	Quiz in aid of CLIC	Mrs P Dain 812859
Sun. 10th December	Afternoon	Christingle Party	Church Friends

WHAT'S NEW IN THE CORONATION HALLS!

Two new activities for small people in the Jubilee Hall

Marie's Mini Movers, Mondays, from 10 am - Marie has been running two popular exercise classes for adults for several years now. Inspired by the birth of her little girl, Marie is now qualified to run a class for babies and toddlers, with their parents. The classes will include music, songs, dance, rhymes and lots of fun. Call Marie on 17939038071 or 623519 for more information.

Tatty Bumpkins, Tuesdays from 10 am - Yoga inspired classes for the under 5's - call Sara Hancock on 815157 for more information.

VILLAGE MARKETS in 2006: 812370



15th July
19th August
16th September
21st October
18th November
2nd December -
Christmas Market



Would you like to give an unusual present and donate to charity at the same time? A book entitled 'Tree-Hunting and Walking in North Somerset' fits these criteria. The cost of the book is £10.00 with all proceeds going to Bristol Children's Hospital. Please ring 01934 510604 to place an order.

BLEADON HORTICULTURAL SOCIETY



The 32nd Spring Flower Show in March proved to be one of the best for many years, with well over 300 entries from some very enthusiastic exhibitors. The cold weather of the early part of the year kept many of the daffodils and spring flowers in tight bud, but there was a pleasing increase in the children's section as well as in the floral exhibits and homecrafts.

Our evening meeting in April was taken by June and Chris Tripp, who passed on many useful practical tips about growing vegetables. We all took away lots of ideas and I have started off my own runner and dwarf beans as suggested by Chris, and they are doing well so far, but I have yet to erect a few windmills to keep away the neighbourhood cats!

The bring and buy plant sale and social was extremely well supported by villagers and friends alike and the society funds were boosted by the hard work put in by Maggie Pettitt and her selling team, as well as by Tony in the kitchen/bar. The raffle, run by Roy and team, was well supported and we are always grateful to those people who donate prizes. Our thanks to Sanders Garden World and Hutton Garden Centre who kindly supplied some of the plants

Garden Visit

On Saturday July 8th we are running an all day trip to Rosemoor RHS Gardens in Devon, leaving the Village at 9.15am.

To book your place please phone me on 01934 813152. The cost is £10.00 per person

33rd Summer Flower Show

This will be held in The Coronation Hall on Saturday September 2nd at 2.30pm. Schedules should be available shortly from the Post Office, the Church Porch or from Committee members.

I would like to remind you that all are welcome at our meetings and that the shows are open to anyone who cares to exhibit in any of the classes.

Happy Gardening in the coming Summer months!

Chris Cudlipp

FEATURE FIREPLACES

Everything for your Fireplace and Chimney

• GAS • ELECTRIC • SOLID FUEL •
Site Surveys, Professional Advice
Design, Manufacture and Installation

Large Showroom with Working Stoves & Fireplaces

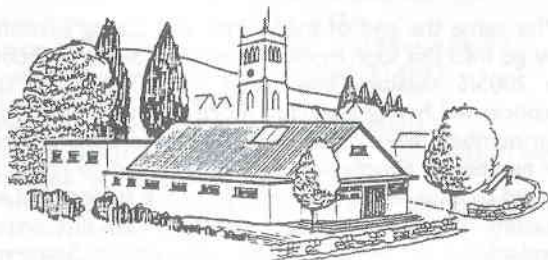
Specialists in High Efficiency Fires

10 minutes from M5 Junction 21 - Easy Parking

Weston Super Mare (01934) 628142
www.feature-fireplaces.com



CORONATION HALL MANAGEMENT COMMITTEE



Bleadon Coronation Hall
Reg. Charity No.1042602

The AGM of the Hall Management Committee was held on April 13th when the following Officers and members were appointed:-

CHAIRMANLen Chamberlainpersonal and premises licence holder
VICE-CHAIRMAN.....Tony Pettittvillage representative
SECRETARYRoyston Waltersvillage representative.
TREASURER.....Clive MorrisParish Council Representative.

KEITH PYKEParish Council
NINA CHANCELadies Club
MIKE WELCH.....Horticultural Society
MARY HENLEYBridge Club
ANNE NORTHY-BAKERBleadon Players
LYN RIDINGShort Mat Bowls Club
BETTY PATERSONParochial Church Council
BERYL DAVIESFriendship Club
CATH DAVIESToddler Group
BELLA WAREBrownies

JOANNE JONESBooking Officer
LES MASTERS.....Designated Premises Supervisor
SHIRLEY CABELLIndependent Examiner (accounts)

OTHER WEBSITES FOR BLEADON

PARISH COUNCIL www.bleadonparishcouncil.gov.uk

CHURCH..... www.bleadonchurch.info

BLEADON (Courtesy of Bob McKay) www.bleadon.org.uk



BLEADON PHOTOGRAPHIC GROUP

At the end of May came the end of the Winter and Spring sessions of the Group who now go into the four month summer recess and reconvene in September. The 2005/6 sessions have been most successful as far as membership is concerned having attracted more new members than at any time in the past. At one time our numbers were down to single figures but with the advent of digital photography a greater number of people who, up till then, had no real interest in photography, suddenly found a need to expand their knowledge of the subject and so joined the Group. With the regular monthly "Digital Workshops" members have discovered a way of improving their skills and developing their overall interest in the subject. Some members have only ever been involved in Digital and wet processing holds no interest for them, which only goes to show the broad church of capabilities the Group now caters for. We would still like to welcome more people from the village, to come and enjoy the interesting topics which make up the overall annual programme. You do not have to be an expert in the subject, just someone who wants to improve their own abilities in this fascinating subject and learn more about how to improve their own pictures. Don't think for one moment that the Group is male dominated because it is not. We have almost as many ladies as gentlemen in the membership, in fact if we get a few more ladies to join, the men will be in the minority. Photography is one of those hobbies that is equally attractive to both sexes and we find in the national federation to which the Group belongs, that ladies are well represented in the top league of photographers, many winning major awards. So what about it? Why don't you give us a try when we reconvene in September. Come as a visitor to see if you like us and then join when you find that we don't bite. If anyone would like to find out more about us, contact the secretary on 01934 813320. The new programme will be published during the summer and you are welcome to a copy. I hope to see some more of you then.

Ken Tapley.

Chairman, Bleadon Photographic Group.

BLEADON BEAT

Bogus callers

This is the time of year when 'bogus callers' occasionally call in the village. Bogus officials may claim to be from the council, utility companies or other workers offering to check for repairs. They may also claim to be dealers wishing to buy antiques. Their reason for calling is to steal from you or trick you into parting with something for less than its true cost. Genuine callers will normally make an appointment first & will have photo ID with them. If you have doubts about anyone calling at your home then do not let them into your home, contact a friend or neighbour and call the Police immediately.

Beat Surgeries

I shall be holding beat surgeries at the Church Room, from 12.30pm to 2pm, on the following Fridays: -, 14th July and 25th August. Free confidential advice available.

Useful Phone Nos.

Police HQ 0845 4567000.
Village Beat Office 638123.



Pc 2307 Adrian Woolacott

HELPLINES

Advice and Counselling on Alcohol and Drugs:

55a Oxford Street, W-s-M (01934) 415376.

Age Concern: 23 Boulevard, W-s-M - (01934) 629192.

Alzheimer's Disease Society: (01934) 514977.

Arthritis Care: (01934) 622808.

Young People With Arthritis: (01934) 525037.

Axe District Scouts: Mrs Ann Coombes - (01934) 513699.

Business Link West: (0345) 678100.

Cancer Information Service: (0207) 608 1661 or (01 934) 510230 and (0468) 525525.

Cancer Information and Support Centre: (0117) 928 3369.

Carers Centre: 1 Graham Road, W-s-M (01934) 644223. Information and advice for people caring for elderly and disabled relatives at home.

Childline: Freephone (0800) 1111.

Citizens Advice Bureau: Roselawn, Walliscote Grove Road, W-s-M (01934) 621908.

CLIC W-s-M: (01934) 812859.

Community Health Council (Bristol & District): Manulife House, 10 Marlborough Street, Bristol BS1 3NU. Also at Crossroads, Graham Road, W-s-M on Fridays from 9.30am-12.30pm. Ring (0117) 987 3800 out of hours.

Council for Voluntary Services: (01934) 631169.

CRUSE (bereavement help): (01934) 628233.

Disability Information Service North Somerset: 3 Manor Court, Locking, W-s-M (01934) 820104.

Disabled Sociability Network: (01934) 623752.

Dementia Care Trust: (01934) 522300.

Friends Across North Somerset: The Potteries Community Centre, Langford Road, W-s-M, BS23 3PQ. (01934) 613238. F.A.N.S@ecosse.net

FRIEND (mental health centre): (01934) 622292.

Heart, Chest and Stroke Social Club: (01934) 412391.

HIV, AIDS and Sexual Health: (0117) 955 1000.

Horizon Club for the Hard of Hearing: (01934) 629412.

James Macdonald Cancer Trust: (01 934) 510230 or (0468) 525525.

Leukaemia Care Society: (01761) 453703.

Multiple Sclerosis Society (North Somerset and West Mendip Branch): Local information/helpline (01 934) 814499. National helpline: 0800 800 8000.

Myasthenia Gravis Association: (01934) 413371.

North Somerset Gateopener Family Advice and Advocacy Service: (01934) 644452 or 513726.

NSPCC: (0117) 966 4283.

Osteoporosis Group: (01934) 415096 or (01934) 844138.

Rape Helpline: (0117) 935 1707.

Red Cross: (01934) 622844.

RELATE: (marriage guidance) (01934) 627206.

R.S.P.C.A. 172 Locking Road, W-s-M (01934) 627000 or (08705) 555999.

St John Ambulance: (01934) 629905.

Samaritans: 137 High Street, W-s-M (01934) 632555. SSAFA

Forces Help: (01934) 644024 (11 am-12 noon Wednesdays).

Sunshine Radio: Weston General Hospital - (01934) 619252.

Voluntary Agency: (01934) 410190.

Weston and District Muscular Dystrophy Support Group: (01934) 419853.

Weston and District Victim Support: (01934) 638179.

WRVS: (0117) 907 7700.

Woodspring Talking News: (01934) 622054.

OFFERS

- REGULAR GRASSCUTTING
- HEDGES & TREES CUT
- SHRUBS PRUNED
- BLOCK PAVING REPAIRS
- FENCE PAINTING
- TURFING
- PATIOS & CHIPPINGS LAID
- LAWNS SCARIFIED

DECKING ERECTED

**PATIOS & PATHS
PRESSURE WASHED**

**Mark Howe
gardening services**

**ALL TYPES OF FENCING
ERECTED & REPAIRED**

SHED ERECTION & REPAIR

9 Malvern Road
Weston-super-Mare

Phone: 01934 413594
Or
0777 327 2003

**GOOD QUALITY SEASONED
HARDWOOD
LOGS FOR SALE**



**GOOD VALUE
PROMPT DELIVERY
SMALL AND LARGE LOADS
AVAILABLE
TEL.- 01934 751378
MOBILE.- 07762 901916**

CONTACT ADDRESSES

EDITOR.....penny.rob@btopenworld.com
PARISH COUNCILwww.bleadonparishcouncil.gov.uk
CHURCHwww.bleadonchurch.info
BLEADONwww.bleadon.org.uk



PC Problems, Upgrades, Internet connections

No callout fee,
7 day local service

Get your computer fixed on site, at your convenience.
Very reasonable rates
Fully qualified

PC Doctor

Tel: 01934 811557
Mobile: 07867 642 542

petpals 
your best friends friend

We visit to feed, walk & play with your
pets, in their own safe environment with
familiar sights and smells



Home Boarding

your dog can stay with one of our
families while you are away

Visit: www.petpals.com

ALL PETS CATERED FOR

- Dog Walking
- Cat Feeding
- Pet at Home Day Visits
- Family Home Boarding
- Fully Insured



Tony or Diane 01934 815060

Email: weston@petpals.com

Visit www.k9zone.co.uk

For Professional And Caring

Dog Grooming

Call Diane or Kim At:

DOGZONE

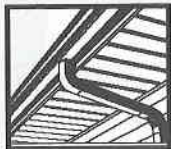
Accommodation Road, Bleadon

01934 811444

Email: hazenaide@btconnect.com

Pet Care Trust & British Dog Groomers Association Member





SOMERSET FASCIAS



U-PVC SPECIALISTS

- FASCIA BOARDS & SOFFITS
- GUTTERS & DOWNPIPES
- CLADDING
- ROOFING

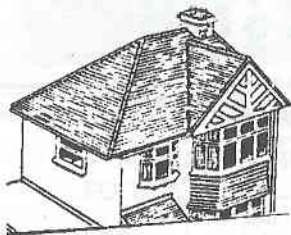
References on request

- Competitive Prices - Quality Workmanship

ALL INSTALLATIONS & MATERIALS FULLY GUARANTEED

Tel: 01934 628793
Mobile: 07710 727595

ROOFCHECK



ROOFING CONTRACTORS
PVC-u REPLACEMENT
SPECIALISTS

TEL: 01934 644430 ANYTIME

33a Swiss Road,

Weston-super-Mare BS23 3AY

Member of the Guild of Builders & Contractors

REFERENCES ON REQUEST

Beck's Advance Tech Salon

Now offering

The latest in Technology IPL

Endermologie and Oxyfusion

Permanent Hair Removal

Acne Treatment

Skin Rejuvenation

Full body Rejuvenation

Non-surgical Bum Lift Tummy Tuck

Cellulite and Fat Removal

**No Needle alternative to Botox, collagen
and Fillers**

Age Spots & Pigmentation Removal

Microdermabrasion

Chemical Peels

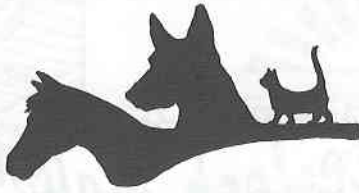
- Excellent and quick treatment results
- Safe & approved

Treatments for Men and Women

For more information call Becky on

01934 629000

15b Waterloo Street, 2nd Floor, Weston-super-Mare
Along from the Boulevard above Stanley's Betting shop



ANIMAL PORTRAITS

in full colour Pastel

by Sheila Excell

I love drawing animals from life - they are nearly always much better models than their owners anticipate!

If drawing from life is not an option then good clear photos are the answer.

I am happy to show samples of my work and the full fee is not expected until the customer is quite satisfied.

Horses, Dogs, Cat and Farm animals - anything with four legs!

Prices from £30 (a small head study)

Framing extra.

Phone 01278 760697

Sheila Excell

Little Acre, Church Rd. East Brent

FRANCE

HOLIDAY HOME TO LET IN SUNNY SOUTH VENDEE

www.vendeholidayhouse.co.uk



A fully furnished three bedroom bungalow situated in **St Denis -du- Payre** on the edge of a "reserve naturelle", home to around 120 species of wild birds each year. Within easy reach of **Lucon** and the beautiful beaches at **La Faute, La Tranche** approx 10 miles away. The lively resorts of **La Rochelle** and **Les Sables d'OLonne** approx 30 miles

The accommodation comprises of: fully equipped kitchen/dining room, living room with log fire, TV (French & English Channels), one double bedroom, one twin bedded bed room, one bedroom with bunk beds and double sofa bed, bathroom/shower room and separate WC, laundry, electric heating, private parking. Large fenced garden with patio, garden furniture and barbecue.

Exclusive use of 8m x 4m Private Pool.

For full details prices and availability please ring or e-mail Ray and Yvonne Hicks .

Telephone: +44 (0)1934 811993; mobile 07775928596;

[e-mail Raymond.Hicks@Btinternet.com](mailto:Raymond.Hicks@Btinternet.com)

Fed up fiddling about with troublesome **home computers**?
Simply want the things to work properly?

PLEASE RING US - WE WILL HELP

HOMELINE

technology

Call **0870 240 6062** (Standard national call rate)

Subscription entitles you to:

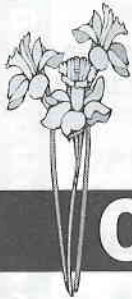
UNLIMITED telephone support - we solve most computer problems over the phone.

FREE annual maintenance visit.

30% OFF home engineering visits.

FREE advice on equipment - we'll even buy it, deliver and set it up for you.

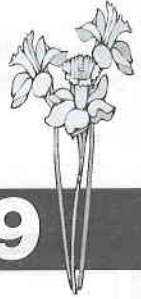
FREE high-risk virus warnings.



***Don't suffer
violence in silence***

Call

0800-69-49-999



for free confidential support and advice

The Domestic Abuse FreeFone Support Line (Daffs) offers a single point of contact for free and confidential advice and support to any person suffering domestic abuse. Call now, protect yourself and anyone you suspect may be suffering.

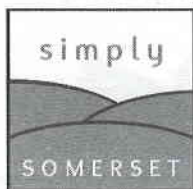
STILLPOINT

Carol Joy DC MMA

Acupressure massage, McTimoney therapy,
Hawaiian bodywork, Life coaching.

Old Oak Farm, Chapel Allerton,
Axbridge, Somerset. BS26 2PD.
tel: 01934 712726
email: info@stillpoint.uk.com

www.stillpoint.uk.com



A great way
to spend
a day or evening out

*Published Diary of Events & Excursions- Minibus Hire- Tailored Special Occasion
Excursions- Days at the Races- Cricket- Somerset Uncovered - Mysteries of Somerset
- Picnics- Golf Days- Bath (Roman Baths/Shopping) - Music Events- Shows &
Festivals- Sporting Events & Activities.*

Why not call us on **01934-812414** or **07766-713342** for further information or a brochure; email info@simplysomeret.com or visit www.simplysomeret.com

" IT'S THE ONLY WAY IN THE VILLAGE "

PHILIP JAY

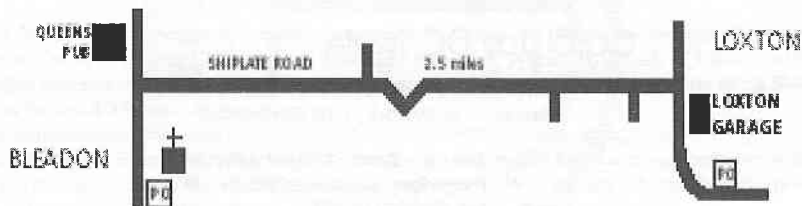
01934 750445 DAY

01934 750439 EVE

**LOXTON
GARAGE**

LOXTON BS26 2XE

philip-jay@loxtton-garage.fsnet.co.uk



Motor Vehicle Repairs * Servicing * Cambelts * Welding * Accident Repairs
Electrical * Fault Codes * Breakdown * Diesel & Petrol * FOC Courtesy Cars

THE SOUTH WEST'S NEWEST GARDEN CENTRE

- Excellent range of gardening products
- 100's of varieties of houseplants, trees and shrubs
- Collections of the more unusual products & plants
- Free expert horticultural advice
- Restaurant open all day offering everything from Sunday roasts to high teas
- All year round free gardening events & festivals, ask in-store for details
- East access & free parking for all
- Just off Junction 22 of the M5

OPEN EVERY DAY

Mon - Sat: 9am - 6pm

Sun: 10am - 4.30pm



**Sanders
gardenworld**

BRISTOL ROAD, BRENT KNOLL, SOMERSET TA9 4HJ Tel 01278 761111

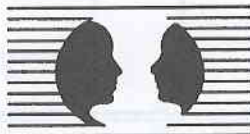
Alan Robinson

BACP Accredited
Counsellor & Psychotherapist

01934 744123

(Draycott near Cheddar)

www.counselling.in-somerset.net





For community news and sport
read it first in the

Weston & Somerset
Mercury

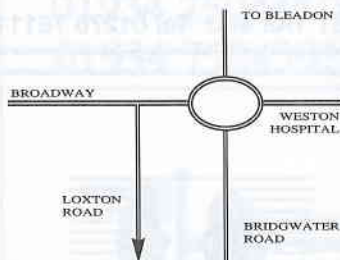
Weston's paper

Telephone us on **01934 422500**
with all your local news

E-mail: Newsdesk@thewestonmercury.co.uk
www.thewestonmercury.co.uk

KING'S BARBERS

5 LOXTON ROAD
WESTON-SUPER-MARE



Tracy has moved!

Traditional & Modern Cuts

Ladies Dry Cuts Only

SPEEDWATCH

WE STILL HAVE A NUMBER OF MOTORISTS WHO INSIST ON SPEEDING THROUGH OUR VILLAGE.
IF YOU ARE FED UP AND WANT TO HELP POSITIVELY THEN PLEASE CONSIDER JOINING THE
SPEEDWATCH GROUP OF VOLUNTEERS.
IF YOU THINK YOU CAN HELP IN ANY WAY PLEASE CONTACT ANY MEMBER OF THE PARISH COUNCIL.

Lympsham Manor Livery

Rectory Way, Lympsham

Stables now available in the heart of Lympsham providing a safe, comfortable and friendly environment for your horse or pony.

Outdoor arena 60m x 20m. Also offering:

- DIY, part or full livery,
- All year round grazing.
- Access to and use of off road tracks,
- Hay and straw and other supplies readily available on site,

Please call Sally to view or book a place on 07789 072433 .

BRIDGE GARAGE

(Prop: Peter Briffitt)

BLEADON VILLAGE

AT YOUR SERVICE

TELEPHONE: 01934 812206

BLEADON CHURCH - PARISH MAGAZINE

Monthly 30p



News, Views, Reports
Times of and information about
Services and special events.



***To get your copy, phone
Pete Williams on 812020***

Also obtainable from Bleadon Post Office

STEPHEN & CO.

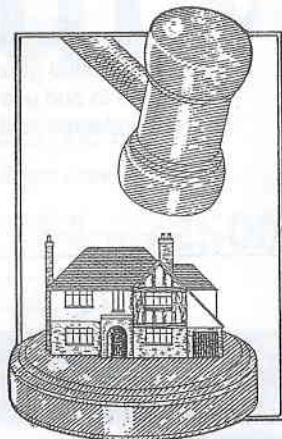
CHARTERED SURVEYORS

01934 - 621101

Professional Advice
on all property matters

Chartered Valuation Surveyors
Auctioneers
Estate agents

(Next to Town Hall)
Weston-super-Mare BS23 1UP
Fax: (01934) 621519
E-mail: post@stephenand.co.uk
www.stephenand.co.uk



QUEEN'S ARMS

Celtic Way, Bleadon
BUTCOMBE BREWERY

Dan and Jess welcome you to our traditional village pub with a warm and friendly atmosphere. Relax and enjoy ales direct from the cask and savour our excellent food freshly prepared by our award winning chef.



- CHEFS SPECIAL DAILY
- REGULAR THEME NIGHTS
- GUEST ALES
- SKITTLE ALLEY AVAILABLE FOR FUNCTIONS

In the 2005 Good Pub Guide

Tel: 01934 812080 Fax: 01934 811234

or visit our web site at www.butcombe.co.uk

PLASTECH WINDOWS

**SPECIALISTS IN THE INSTALLATION
OF HIGH QUALITY UPVC**

- ★ doors
- ★ windows
- ★ patio's
- ★ fascias
- ★ cladding
- ★ guttering
- ★ Full range of conservatories

*We offer top quality products
custom made to almost any design*

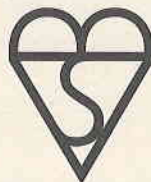


**A member of
the Guild of
Master Craftsmen**

FENSA

Registered Company

**20 YEARS
EXPERIENCE**



**BRITISH STANDARD
BS 5713 GLASS UNITS**

NO ONE CAN BEAT US ON PRICE & QUALITY

For a prompt & personal service phone
Bleadon (01934) 814500
Mobile: 0777 4475736

Actionwork Films

A Bleadon film company

Producing films for the community and local business

High impact professional quality digital films
produced on VHS video or DVD

We can make all kinds of films for you including:

- Short promotional films
- Business card DVDs
- Self-help videos
- Documentaries
- Community initiative films
- Wedding or birthday videos
- A feature film from your script



From
£1000

Our clients have included the British
Council, Government Departments,
Schools, Colleges, Community
Groups, and small businesses



Contact us on 01934 815163
E-mail films@actionwork.com
Website: www.actionwork.com

This Newsletter is Edited by PENNY ROBINSON of 1, The Veale, Bleadon BS24 0NP

THE COVER DESIGN IS BY JOHN HICKLEY

Published by BLEADON PARISH COUNCIL, Bleadon, North Somerset.

Produced & Printed by GFS Print Telephone (01934) 622409 · Fax (01934) 622409