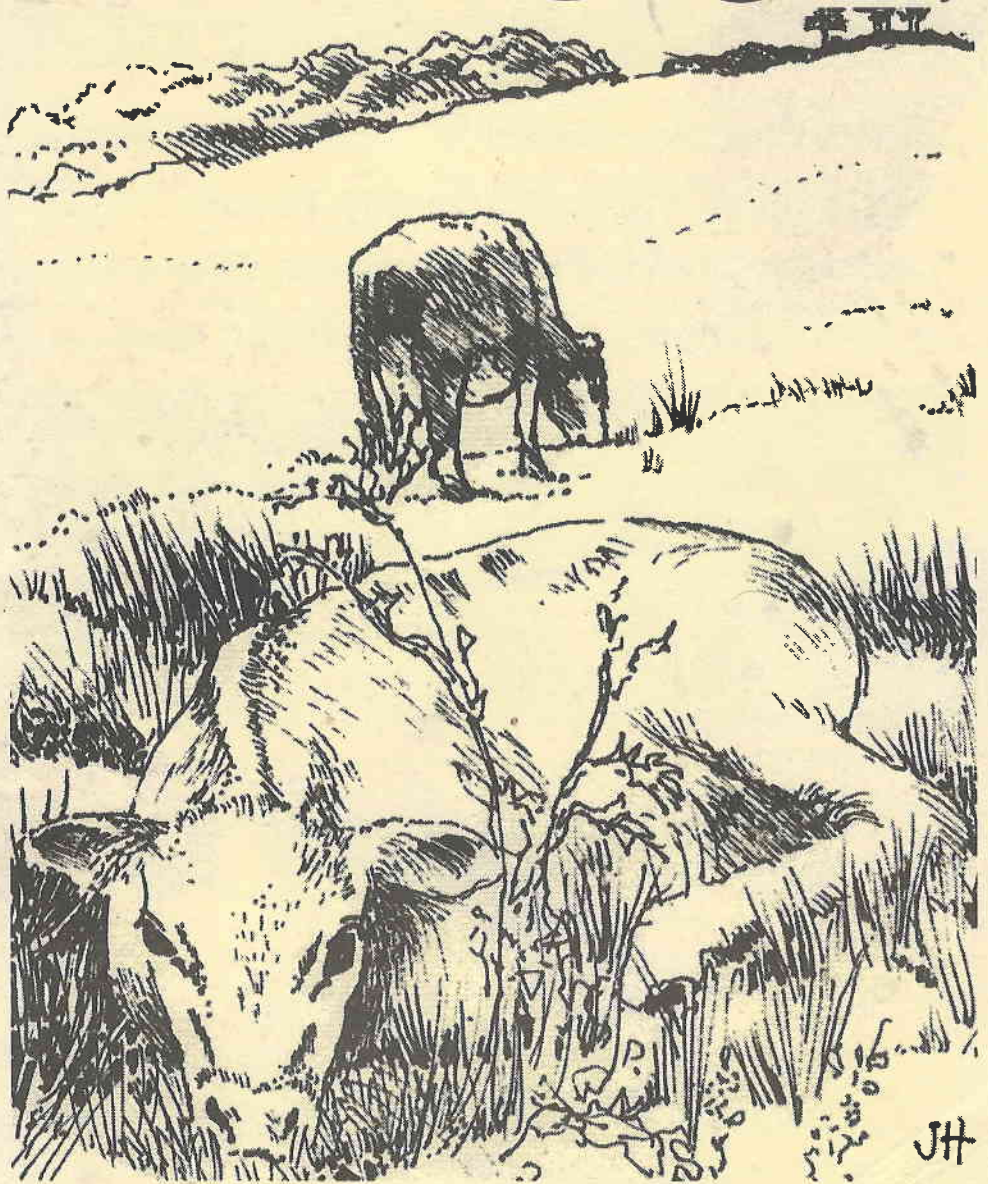


BLEADON



VILLAGE NEWS 65

Bleadon Village Monthly Market

Fresh Produce. Astill's Bread. Cakes. Cheese.
Local Cider. Preserves. Honey. Garden Plants.
Lavender. Crafts. Books. Antiques. Bric-a-Brac.
Refreshments. Gossip & Chat and more...



Saturday 9am

June 18th, July 16th

Coronation Hall, Bleadon

01934 812370 to book a stall
at this popular monthly market

YOUR PARISH COUNCIL

- PENNY SKELLEY [CHAIRMAN] 'MENDIP CROFT', CELTIC WAY, BLEADON. TEL.815331
- PENNY ROBINSON [VICE CHAIRMAN] ..I, THE VEALE, SHIPLATE RD BLEADON. TEL 814142
- RAY HICKS 'FIDDLER'S VIEW, HILLCOTE BLEADON HILL TEL 811993
- MALCOLM PERRY 'WESTFIELD', I THE BARTON, BLEADON. TEL 813940
- MARY SHEPPARD 'LITTLEWOOD' BRIDGWATER RD., LYMPSHAM. TEL 812921
- KEITH PYKE8, WHITEGATE CLOSE, BLEADON. TEL 813127
- CLIVE MORRIS.....20, BLEADON MILL, BLEADON. TEL 811591.
- JUSTIN HARVEY-BENNETTTHE BEECHES, CELTIC WAY, BLEADON. TEL 811373
- ROBERT HOUSELAKE FARM COTTAGES, SHIPLATE ROAD, BLEADON. TEL 815588

THE PARISH CLERK TO WHOM ALL CORRESPONDENCE SHOULD BE ADDRESSED IS:-
BRUCE POOLE, 'THE CHIPPINGS', 21 STONELEIGH CLOSE,
BURNHAM-ON-SEA, SOMERSET TA8 3EE
TEL, 01278 787555 or e-mail:bruce.poole2@btopenworld.com

The Council meets on the 2nd Monday of the month at 7.30pm, in the Coronation Hall. An agenda is published on the Parish notice board, and any member of the public who wishes to, may attend these meetings and raise any issue of interest at the end of business.

WE AIM TO PUBLISH THIS NEWSLETTER FOUR TIMES A YEAR, -
MARCH, JUNE, SEPTEMBER, AND DECEMBER.

DATE SENSITIVE MATERIAL AND ADVANCE PUBLICITY SHOULD REACH THE
EDITOR WELL IN ADVANCE OF THE EVENT, AS A DEFINITE PUBLISHING DATE
CANNOT BE GUARANTEED.

**The deadline for the next issue will be August 26th 2005
and remember
if you are planning Christmas events that this will be this issue
in which to advertise them!**

I SHOULD LIKE TO THANK ALL THOSE OF YOU WHO HELP WITH THE DISTRIBUTION OF THE
MAGAZINE, AND I DO HOPE THAT I MAY COUNT ON YOUR FUTURE SUPPORT. IF THERE ARE ANY
OTHERS OUT THERE WHO WOULD LIKE TO HELP WITH DELIVERIES, PLEASE LET ME KNOW.
(TEL.814142). OUR AIM IS TO PROVIDE A COPY FREE TO EVERY HOUSEHOLD WITHIN THE PARISH OF
BLEADON. THOSE LIVING OUTSIDE THE PARISH MAY BE ABLE TO OBTAIN A COPY FROM THE VILLAGE
POST OFFICE AND STORES.

**UNLESS OTHERWISE STATED THE OPINIONS AND COMMENTS EXPRESSED IN THIS NEWSLETTER
ARE THOSE OF THE CONTRIBUTOR AND NOT OF BLEADON PARISH COUNCIL. ANYONE WHO
HAS ANY COMMENT TO MAKE ABOUT THIS PUBLICATION SHOULD CONTACT THE EDITOR.
IF YOU DISAGREE WITH ANY OF THE VIEWS EXPRESSED YOU HAVE THE RIGHT OF REPLY!**

Troubleshooting
Call Outs
Sales
Laptops
Installation
Networking
Wireless
Internet

south
west **it**

Richard Walker BSc. (Hons.) AMIEE
Tel: 01934 710550 or 07787 125242

Email: rich.walker@southwestit.co.uk Web: www.southwestit.co.uk

BEFORE BLEADON

MANY OF THE PHOTOS THAT WERE DISPLAYED IN LAST YEAR'S EXHIBITION HAVE NOW BEEN PUT ON DISC.

THESE DISCS MAY BE ORDERED FROM PENNY ROBINSON TEL: 01934 814142

A CD-ROM (for PCs only, not Mac) £5.00p

A DVD (plays on most DVD players) £8.50p

A PROPORTION OF THE PROFITS FROM THE SALE OF THESE DISCS WILL BE DONATED TO THE CORONATION HALL FUND.

See www.bleadonparishcouncil.gov.uk for more details



Lymsham Pre-School mission statement.

To prepare children for school life; academically and socially in an environment that allows children to grow in confidence and ability. Dealing with the whole child and creating a safe and warm atmosphere.

- ❖ Opened in 1992
- ❖ Fully Qualified Staff
- ❖ Close link to Lymsham C of E VC First School
- ❖ Set in school hall
- ❖ Use of kitchen facilities
- ❖ Attractive outdoor area for children to play and learn
- ❖ Registered for children age 2 _ to 5 years
- ❖ Government funded for over 3's
- ❖ Open 9 – 12noon Monday to Friday
- ❖ Warm and welcoming environment
- ❖ Holiday club available during school holidays 9am-5.15pm
- ❖ We accept children for between one and five sessions per week

Our Ofsted inspection report of 2004 said "The children are confident to try new experiences showing a positive approach to their learning. They show curiosity and are excellent at exploring the wealth of relevant and stimulating activities that are provided for them."

Please contact us to arrange your free trial morning!

Contact Deborah Smith supervisor for more details and a prospectus on 07743 188865 or email: debra@hemingwaycorp.com . Alternatively leave a message on 01934 812131.

Manor Hall, Rectory Way, Lymsham, Somerset, BS24 0EW Registered Charity No. 1024967

ANNUAL PARISH REPORTS



2004 -2005 as presented at the Annual Parish Meeting April 2005

CHAIRMAN'S REPORT

May I begin the Annual Parish Report by expressing my pleasure at a splendid year for Bleadon Parish Council. As you will hear from the Councillors reports much has been accomplished over the last twelve months. We have achieved Quality Council Status having adhered to all the requirements set by National Government. We gained this prestigious award last December and I proudly accepted the Certificate in January this year.

More recently we have also been awarded in competition with hundreds of parishes a NEC internet-ready PC and a twelve month connection to BT Yahoo Anytime as part of the BT Community Connections Award Scheme. For the benefit of the local community this will be sited in the new Post Office which will open on Saturday 23rd April.

After discussions in Council over the year the Village Plan was launched in January and is being masterminded by four Sub-Committees and a Steering Committee. We should soon be able to publish a questionnaire which will be distributed throughout the village and the returns from this will be vital to the final draft.

We have harried the Highway Services for "The Gang" to keep our roads in order. The Jubilee Garden has been refurbished and the Parish tubs filled with seasonal plants. A Speed Watch scheme has been set up and with help from more volunteers will be extended in the future. New fencing has been erected around the Play Park and the whole area has passed an annual inspection. The Coronation Hall and Jubilee Room continue to be upgraded and the car park is on our list to be resurfaced. So the heart of the village continues to improve.

As a Council we look forward with vigour to the year ahead and the general well being of our community. I thank you all for your continuing support and remind you that the Parish Council meets on the second Monday of each month and your attendance is always welcome.

Penny Skelley (Chairman)

PLANNING

This past year has been fairly quiet on the planning front with 17 applications and 15 site visits. The Parish Council recommended refusal on three applications but this was overturned by North Somerset. They also overturned three other applications where the Parish Council recommended approval.

The ongoing saga on the certificate of lawfulness for the car-boot sale has been approved by the planning department but a public inquiry into its continuation was held on the 19th April 2005. The owner of a parcel of land in Facum Lane has been given 28 days to clear up the site as it contravenes planning law. Failure to do so will result in enforcement action.

Mary Sheppard

OPEN SPACES

I am pleased to report another successful year for the village and its open spaces.

Once again our village tubs have looked good throughout the seasons - mainly due to the quality of plants supplied by Sanders Garden World and of course the hard work of those dedicated few who came to plant them up in the spring and autumn. Once more I thank you all for your continuing support in this endeavour. There are other villagers who take it upon themselves to plant their own containers and the overall effect is very colourful, I should like to take this opportunity to thank them too.

Thanks too to the volunteers who helped with 'clean up day'. At least for a short time the village looked tidy but it is a shame that there is not enough public spiritedness to keep it so on a regular basis. If each villager kept their own patch clean and tidy especially on Mondays after the refuse collection I'm sure

the whole village would benefit. There has also been more to say on the subject of 'dog mess'. I enquired into the costs purchasing bins and cost of emptying them, but the real stumbling block has been the positioning of them. In respect of this opposition the plan to have them around the village has for the moment been shelved. I can only implore all dog owners to be responsible carry plastic bags and take the offending material home to their own bins!

Mark Howe and his team have continued to maintain our playground and other grassy areas in the usual efficient manner, and have also done a good job in tidying the Jubilee Garden, which has improved visibility in that area immensely. The shrubs around the telephone box and the toilets have been cut back and that has also visually enhanced the area. We are also grateful to Mark for his work in looking after the Churchyard so well, and all the other jobs he undertakes when the occasion arises.

Parish Notice boards have at last reached the stage of being put in place and we hope they will be used well, and provide a source of useful information to villagers and visitors alike. New seats have been purchased to give respite along the way to those who walk to the shop and thanks to the generosity of District Councillor Peddlesden an additional seat is now also in position.

My thanks too, to the Mendip Rangers who led by Andy Eddy have kept our stiles and footpaths in good order. They also have taken care of the picnic furniture in one lay-by in Roman road and have placed an information table in the other. Boulders have been placed in the entrance of the larger Roman road lay-by, to prevent large vehicles from parking there. New kissing gates/squeeze gates have been positioned on the footpaths in and around the village, for which many of us are very grateful.

The Churchyard

There has been need for the usual remedial work around the churchyard, the cutting back of the undergrowth and the trimming of the trees etc. There was a major repair required to the wall abutting the Old Post office and this was undertaken and carried out very satisfactorily by a local builder.

After a meeting with the PCC a recommendation was made concerning the resurfacing of the footpath which runs through the Churchyard and also the entrance up to the West door. Quotations are still being sought for this work which it is hoped will be completed at the same time as the car park.

Penny Robinson (Chairman of Open Spaces)

Combe Quarry

The Combe Quarry (near Catherine's Inn) was cleared and tidied in March. Numerous saplings brambles and Hawthorns cut down and removed to help open up the site to sunlight and make it more accessible to visitors. Donated seeds and bulbs have been planted and it's hoped that the more open aspect of the site will encourage naturalisation of colourful native flowers. The intention is that this should become a controlled naturalised site to encourage environmental diversity.

Notice boards

Three new oak notice boards have been purchased. These will soon be erected in three locations around the village: at Bleadon Road bus shelter near the village cross and at the top of the Veale. This should greatly improve communications throughout our community.

New benches

Two new benches have been provided. One in Purn Way thanks to the generosity of District Councillor Ian Peddlesden. Another near the Purn House Farm bus stop was purchased by the parish council.

PLAY AREA

The play area continues to be well used and enjoyed by residents and visitors. This year we introduced a regular safety inspection routine. This ensures that we stay on top of any problems or safety issues. The annual ROSPA inspection revealed just how safe and well maintained the play area is. The new steel mesh fencing seems to have been a success with everyone, despite the initial misgivings and grumbles of a few residents.

HEARING SERVICES

R Gethin RHAD MSHAA

40 Meadow Street, Weston-super-Mare

01934 620376

Home Visiting Service Available



*Registered Member of
The British Chiroprody
Association*

PAULINE M. FRY

MSSCh MBChA

Qualified Chiroprodist

Home Visits Tel: 01934 812094

5 Totterdown Lane

Bleadon

Weston-super-Mare

North Somerset BS24 9LU

e.mail: PaulineMFry@AOL.com

QUALIFIED ELECTRICIAN

(EST. 1995)

Steve Insley

WSM 812709

07971 413603



*No Quotation Charge
No Call Out Charge
No Job Too Small
No Obligation - No VAT*

Electrical Installation Work (Minor Works Only)

- Security Lights • Extra Lights • Extra Sockets • Telephone Extensions •
- Replacement Fittings • Door Bells • Fault Finding ... Etc. Etc. •
- Full Apprentice Served JIB Graded Electrical - City & Guilds - 16th Edition Regs •

BLEADON VILLAGE PLAN

Preparation for the Bleadon Village Plan began with the distribution of over 400 colour leaflets to households around the parish in December. The leaflet hi-lighted some exciting and contentious possibilities for the future.

Nearly 200 people packed the Coronation Hall on 15 January to hear about the parish plan. It was standing room only for many villagers at this inaugural event.

A 20 minute on-screen presentation explained the reason for having a village plan. Villagers heard how it could shape their future what it might include and how the whole community can help in the production of the plan.

Villagers gave us plenty of feedback on what they most value and most want to improve in the parish. We had hundreds of suggestions from those who attended. To help decide what this community needs in the future, four volunteer action groups have been set up to work on the key themes of the plan. Around 24 people volunteered to help with the action groups.

The four themes are:

Economy and prosperity, whose key priorities are:

- to increase local job opportunities and reduce the need to commute out of the area
- secure the prosperity of residents
- encourage enterprise

Well-being and safety, whose key priorities are:

- improve road safety
- reduce crime and fear of crime
- reduce anti-social behaviour
- maximise opportunities for older people to live full and independent lives in the community
- improve access and choice of housing for all
- promote healthy and active lifestyles

Learning and leisure throughout life, whose key priorities are:

- develop and promote enjoyment of our environment
- improve opportunities for play
- promote healthy and active lifestyles
- promote effective social inclusion
- widen participation in learning
- improve existing and create new community learning facilities

Environment, whose main priorities are:

- protect and improve the quality of our natural and built environment
- improve traffic management
- improve footpaths and access to our countryside
- ensure that future building development is in character and sustainable
- meeting future housing needs

The action groups are already busy with research and creative ideas for the future of Bleadon. The results of their labours are fed back to the Bleadon Plan Steering Committee, which ultimately has responsibility for producing the Bleadon Village Plan. The steering committee met for the first time in March to elect its management team and hear feedback from the action groups.

Meetings of the steering committee are open to the public.

The steering committee is now working on the production of an extensive questionnaire to go to all households and businesses in the parish. Results from this questionnaire will provide a "health check" on the parish and help each of the action groups to deliver what the community needs in the future.

Keith Pyke

ALLOTMENTS

This past year has been successful one with all 16 plots occupied. For the time for several years we now have a waiting list this is probably because we are becoming more aware of having a healthier life and gardening provides strenuous exercise as well as providing fresh unadulterated food. The gate is awaiting collection and I apologise for the delay in this regard. Rubbish is still proving to be a problem at the north east corner. Steps will be taken to clear away the debris therefore making plot 2 nearer to its normal length.



I congratulate to all the allotment holders on their neat and tidy appearance and wish them a successful growing season.

Mary Sheppard

CORONATION HALL

The Coronation Hall Management Committee has continued to invest in this valuable village asset by making further improvements to the main hall. We are self financing for all normal running costs such as heating lighting insurance cleaning licences etc as these are largely met by hall hire charges. However we have to look elsewhere for financial assistance for major items of expenditure and we are therefore grateful to the Parish Council for their continuing support.



Projects completed in the past year include:

- Further improvements to the Coronation Hall kitchen - new sink unit and additional cupboards
- Installation of a new in-line water boiler for dispensing beverages in the Coronation Hall kitchen
- Purchase of new lightweight tables, some of them easy stacking, to replace damaged tables which were difficult for users to handle
- Refurbishment of the timber floor in the Coronation Hall and removal of unsightly quarry tiles

These developments have all contributed to the appeal of this popular village venue that is now used by a wider range of people in the community for family events group meetings craft meetings exercise classes dancing and so on.

The monthly Village Market is a continuing success which generates valuable income for the upkeep of the Coronation Hall and Jubilee Room.

A successful village hall demands considerable support from the community and the Hall Management Committee wishes to acknowledge and thank the many individuals who have given their time and commitment over the year.

We are now embarking on another busy year and you can already see the start of our next two projects.

Finally, tribute must be made to the spirit and generosity of the people of Bleadon who donated a magnificent amount towards the South East Asia Tsunami Appeal in February 2005. All proceeds from the Village Market that month were donated to the Disasters Emergency Committee together with donations from private individuals and various groups who donated very significant sums towards this tragic cause.

Clive Morris

BROWNIES

This thriving group continue to meet every Tuesday evening during term time in the Coronation Hall. Under the leadership of Mrs Bella Ware the Brownies have worked hard since September to obtain five new interest badges. In October the group welcomed Karen Kelson as a permanent leader. With two full-time leaders the group is operating at its maximum of 17 Brownies. If the vacant third post could be filled the group could expand to 24 Brownies. There are still seven girls from Bleadon and Lympsham unable to join until they have another qualified leader. Ist Bleadon Brownies take their community responsibilities seriously and continue to attend church services sell their cakes at the village market and help at the May Fayre.

Brownies

Keith Pyke

YOUTH CLUB

The youth club welcomes young people aged 11-19 every Thursday evening 7 to 9.30pm. It is pleasing to report that the enthusiastic effort by the leaders and their volunteer helpers has meant a steady rise in membership from 8 to 24 young people over the year.

Flower baskets now bring a more welcoming hint of colour to the front of the building thanks to the planting efforts of the young people. An exterior notice-board has been recycled from the church to help promote the club's activities. We've seen improvements inside to the electrical systems kitchen and office areas. A donated TV provides a permanent outlet for dance-mat exuberance and comfortable seating offers a quiet lounge area. The members have enjoyed activities like ice-skating bowling cooking pancakes and making Easter treats and Christmas crackers. A visiting sports worker is providing a variety of sports activities every other week. All the time they are developing their social skills and preparing for adult life.

ROADS & TRANSPORT

During the year ending April 2005 there have been some major improvements to roads within the village. These include the surface dressing of Roman Road, Hillside Road Accommodation Road and Celtic Way. Also Bridge road was repaired and re-surfaced. However Bleadon Road continues to deteriorate but is not deemed as being serious enough by the Highways department to warrant attention at the moment. The schemes that have been planned and are outstanding include the following:-

1. Facum Lane to Accommodation Road Footpath
2. Shiplate Road.

These two projects seem to have dropped off the register and I have yet to receive the list of planned projects for the area to see where in the ranking they appear.

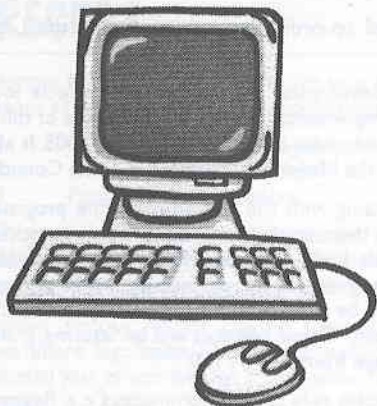
On the whole the conditions within the Parish are good. There is a continual assessment of the roads and footpaths within Bleadon and, as necessary the Highways Department Patchwork Gang is informed of deficiencies. If the council or general public are aware of any locations requiring attention these are gratefully received and will be acted upon although the Highways department regard what is important to Parishioners differently and they consider budgetary constraints. A case in point is the Bus stop area by the Catherine Inn - the cost of the work is too much for the 'General Purpose Gang' and too insignificant for a separate scheme.

At the time of the last report requests for dropped kerbs were made and passed onto the Highways department of North Somerset. On a positive note this request was acted upon very swiftly and the crossings were constructed a short time after.

As a result of the works on the A370 Bleadon was again subjected to additional traffic. Although assurances were made that the conditions of the roads would be monitored and repairs effected afterwards the main concern is that the route through Bleadon would attract more long term use. Unfortunately there is little the Parish Council can do other than to monitor the situation. In reality the roads through the village are restricted both in terms of width and weight capacities so cars are usually forced to drive with more care even though there are rogue elements who would always abuse the system come what may. The presence of the speed watch teams will deter some but others who know the way the system works cynically ignore the teams which is a shame.

I am glad to summarise that the general condition of the roads and footpaths is higher than average but a continual process of observation and where necessary submission of reports to the Highways department is required.

Justin Harvey-Bennett



www.xscomputersupplies.com

CDr, DVDr, Ink Cartridges, Hardware
Unit 8 Purn House Farm,
Bleadon

Tel. 01934 811155

Hours of business:-
10.00am – 5.00pm Weekdays
10.00am – 1.00pm Saturdays

White & Stoneman

Carpentry and Joinery Specialists

**For a professional and friendly service
call us for a free quote.**

Doors - Windows - Stairs - Loft Conversions
Refurbishments - Flooring - Gates - Kitchens

Tel: Ardene Stoneman 01934 811077 Mobile: 07986 187741

www.whiteandstoneman.co.uk enquiries@whiteandstoneman.co.uk



**IF YOU OWN A DOG PLEASE DO NOT ALLOW IT TO FOUL THE
FOOTPATHS AND VERGES OF OUR VILLAGE. THE RESULTING
MESS IS UNSIGHTLY AND A SOURCE OF INFECTION.
BE A GOOD CITIZEN AND CARRY A POOP-SCOOP OR A
PLASTIC BAG AND TAKE THE MESS HOME.
PLEASE DON'T LEAVE IT FOR OTHERS TO CLEAN UP.**

ALCA

ALCA has continued to provide an excellent back-up and co-ordination service for all the Local Authorities in the old AVON area during the past year.

One of their most valuable functions is to monitor all Government legislation which affects local authorities and provide advice to Parish Councils about its implementation. A typical example of this is the Freedom of Information Act General Right of Access which came into force in January 2005. It also examines proposed legislation and makes representations via the National Association of Local Councils.

During the last year NALC has been very active in discussing with the Government the proposed changes in the Roles and Powers of Local Councils to enable them to play a more active role in tackling local crime and anti-social behaviour. Under the proposals local councils will be able to employ neighbourhood wardens and community support officers generally in partnership with principal authorities. It is proposed that "Rangers" and "Wardens" will be able to issue fixed penalty notices on, for example, people who allow their dogs to foul the footpath. Other offences will be littering, graffiti and noise nuisance. It is proposed that the penalties will range from £30 - £100.

Members of the ALCA executive committee also play an active role on key committees e.g. Regional Planning, PostWatch, Bristol Airport Liaison Committee, which discuss matters affecting the local communities in the old Avon area.

Another key area for ALCA is providing information on employment matters and levels of remuneration and expenses for local authority employees and Councillors. They also provide a comprehensive range of training programmes for both Clerks and Councillors.

Perhaps the most valuable function of ALCA is providing advice and a reliable source of information to the Clerk and the Council about any new matters raised by constituents. In particular it is able to share experience about issues that have arisen in other areas and to recommend appropriate courses of action. This reduces the time taken to deal with issues and prevents everyone re-inventing the wheel.

Ray Hicks

POLICE REPORT

Annual Crime within the Parish remains at a reasonably low level especially when compared with other areas locally. In the twelve months, from 1st April 2004 to 31st March 2005, there have been 56 reported crime related incidents within the Parish. The vast majority of offences were either of a domestic nature or involved commercial premises and therefore did not impinge upon the quality of life of Bleadon residents.

There have been five dwelling burglaries within the Parish in the past twelve months. Whilst this figure is not particularly high it is the one offence which causes the most distress to victims. Tackling dwelling burglary has always been a high priority for the Police but it should also be a high priority for householders. From the figures it is clear that non-alarmed properties are far more likely to be broken into than homes with an alarm fitted therefore we have directed efforts towards encouraging residents to have alarms fitted to their homes.

The subject of 'Anti-social behaviour' is very topical at the moment and is the focus of much debate. Dealing with such incidents occupies an increasing amount of Police resources particularly in Weston-Super-Mare town centre. I am pleased to report that incidents of such behaviour within the Parish are particularly low, in fact almost non-existent.

I can report that local a local 'speed watch' scheme is now operating within the village. Residents who have concerns over speeding motorists are encouraged to get involved, as new volunteers are always needed. Monthly Police Surgeries are still being held at the Church Room on dates published locally. Residents are encouraged to attend if they have concerns over any issues.

I would like to thank Phil Ashley for his efforts in running the Village Neighbourhood Watch and would encourage any villagers not covered by a scheme to contact me about becoming involved. I would also like to thank the Parish Council members for all their support over the last twelve months.

Pc 2307 Adrian Woolcott Te101934638123.

PRECEPT

In simple terms the Precept for this year has increased by £5,110. This is due in part to three main reasons as well as the usual inflationary implications.

1. Imposed government legislation
2. Council risk management
3. Future village aspirations

Each year more government legislation impinges on the Parish Council's responsibilities and its potential activities. This then has a financial impact - the major one this year being The Freedom of Information Act. As a result the council has had to overhaul its filing and office procedures.

Another serious impact on the Council is risk management some of which again stems from government legislation. One of the major risks that have been highlighted by me this year is the potential loss of service that might occur due to the partial incapacity through illness of the clerk.

Finally the major increase comes from the short and long term implementation of the Village Plan where the costs of such will reflect themselves within the village over the next twelve months. To conclude the total village precept for 2005/2006 will cost each individual household this year a maximum of £75.00 - just some £1.45 per week. I would suggest a small price to pay to live in such a progressive beautiful and forward thinking village.

BLEADON PARISH COUNCIL - PRECEPT 2005/2006

	ACTUAL 2003/04	BUDGET 2004/05	ACTUAL 2004/05	OUTCOME 2004/05	BUDGET 2005/06
Receipts					
Precept	21430	27660	27660	27660	32770
Interest Received	339	190	325	420	375
Youth Club Rent	210	50	0	50	50
Allotment Rents	196	185	225	225	225
Newsletter Advertisers	785	650	1060	1060	800
Orderly Grant	126	125	141	141	141
War Graves	20	20		20	20
Total Receipts	23106	28880	29411	29576	34380
Payments					
OPEN SPACES					
General Maintenance	35	100	90	90	100
Planting	421	525		525	700
Jubilee Garden		50			50
Footpaths		100			200
Well Green - hedges		225			75
Tree Planting			147	147	700
Playground	107	875	166	166	250
Sundries					
Purn Quarry Cleansing		500			250
Shiplate Hill Sign		75			
Car Park	125				
Grass Cutting	2067	2020		2040	2400
Church Clock	100	100		100	100
Lighting	210	250	80	240	260
Village Orderly Costs					3640
Sub Total - Maintenance	3065	4820	483	3308	8725

Improvements	834		1382	1382	4000
Playground	72	850	4586	4586	
Lighting					
Well Green		850			
Jubilee garden		850	590	590	
Village Signage		2000		2000	
Sub Total - Improvements	906	4550	6558	8558	4000
Allotments - Rent	73	150		219	150
Allotments - Maintenance	186	200			350
Sub Total	259	350		219	500
Total Open Spaces	4229	9720	7041	12085	13225

	ACTUAL 2003/04	BUDGET 2004/05	ACTUAL 2004/05	OUTCOME 2004/05	BUDGET 2005/06
--	--------------------------	--------------------------	--------------------------	---------------------------	--------------------------

ADMINISTRATION

Clerk's Salary	4287	4560	3046	4665	5000
Clerk's Office Expenses	600	600	400	600	600
Staff Contingencies					1000
Stationery	1726	1000	654	750	1000
Faxes	38	50	5	15	25
Insurance	2201	2500	2375	2375	2500
Photocopying	136	200	124	130	50
Postage	210	250	95	140	180
Sundries	15	100	245	245	200
IT	614	600	770	800	800
Professional Fees	1040	500	120	120	300
Newsletter - Printing Costs	1538	1600	510	1500	2000
Subscriptions	345	600	228	228	400
Chairman's Insignia	531	0	0	0	0
Councillors Expenses	919	1400	555	555	1000
Election Expenses	98	200			100
Village Plan		1000		1000	2000
Total Administration	14305	15160	9127	13123	17155

GRANTS

Coronation Hall	3000	4000	4000	4000	4000
S.137 Grants	180				
Sub Total	3180	4000	4000	4000	4000
Total	21714	28880	20169	25212	34380
Surplus/Deficit	1932	0	9242	4364	0

Bleadon Parish Council

Balance Sheet For the year ended 31 March 2005

Year ended
31 March 2004

Year ended
31 March 2005

	CURRENT ASSETS	
28295	Cash at Bank	27368
(0)	Debtors	110
1005	Prepayments	500
897	VAT to be claimed	1468
	<hr/>	<hr/>
30197	TOTAL ASSETS	29445
	 CURRENT LIABILITIES	
-	Creditors	-
8	Receipts in advance	8
-	Accruals	-
8		8
	<hr/>	<hr/>
30189	NET ASSETS	29438
	 Represented by	
1500	Recreation	1500
575	Tree Planting	575
250	Legal Costs	250
600	Interpretation Board	600
500	Car Park	500
3500	Playground Improvements	-
500	Election Expenses	500
5500	Street Lights Fund	4500
12300	Wonderstone	12300
4964	General Fund at 31 March	8713
	<hr/>	<hr/>
30189		29438

The above statement represents fairly the financial position of the authority and reflects its income and expenditure during the year.

Signed:

Chairman

RFO

Bleadon Parish Council

Income & Expenditure For the year ended 31 March 2005

Year ended
31 March 2004

Year ended
31 March 2005

INCOME		
21430	Precept	27660
339	Bank Interest	625
406	Rents	275
785	Advertising	1100
126	Grants	141
20	Other Income	595
<hr/> 23106 TOTAL INCOME <hr/>		<hr/> 30395 <hr/>

EXPENDITURE		
3065	General Maintenance	3155
905	Village Improvements	8537
259	Allotments	218
14305	Administration	14952
3180	Grants	4000
-	Other Expenditure	285
<hr/> 21714 TOTAL EXPENDITURE <hr/>		<hr/> 31146 <hr/>

GENERAL FUND

6073	General Fund O/B	4964
23106	Total Income	30395
29178	Sub Total	35359
21714	Total Expenditure	31146
7464	Sub Total	4213
2500	Transfers to/from General Fund	(4500)
<hr/> 4964 General Fund at 31 March <hr/>		<hr/> 8713 <hr/>

Connoisseur CHOICE

1st Class Catering!

BUFFETS OR FULL SERVICE

MENUS FOR ALL OCCASIONS

PRICES FROM £3.00 PER PERSON

CATERING FOR ALL SIZE PARTIES!

DELIVERED ANY PLACE, ANYTIME
FREE OF ANY EXTRA CHARGE

FULL WAITRESS SERVICE SUPPLIED

COMPREHENSIVE RANGE OF
SIT DOWN MENUS AVAILABLE

VERY COMPETITIVE PRICES YOU
CHOOSE THE MENU
AND THE VENUE - WE DO THE REST

PURN HOUSE FARM, BLEADON BS24 0QE. TEL 01934 814899

WATERHOUSE ELECTRICAL & ENGINEERING SERVICES

Commercial • Domestic • Industrial Installations

Now incorporating a Plumbing & Heating Division

1 Lakeside Barns, Shiplate Road, Bleadon, Weston-super-Mare BS24 0NY.

Tel 01934 813803

National Inspection Council for
Electrical Installation Contracting

Corgi Registered
198748

Mobile 07860 597463


APPROVED CONTRACTORS

CHATTERLEY PLUMBING & HEATING

All types of plumbing work undertaken

- Servicing of boilers and fires
- Taps and washing machines
 - Central heating
- Bathroom installation

Free Estimates given

No call out fee

24 hour Service

Tel: 01934 812629

Mobile: 07887 768877



Tiny Toes

day nursery and baby unit

New and fully equipped

DAY NURSERY

Located in Uphill

Offering a friendly, loving, safe & spacious
learning environment for your child

For more information, our prospectus or to arrange a visit,
call us

(01934) 412779

The Old Barn, Uphill Road South, Uphill



CHURCH OF ST.PETER & ST.PAUL

MAY FAYRE THANK YOUS

My very grateful thanks to the Friends of the Church and all who worked with them for another wonderful May Fayre. Proceeds exceed £5,600. Grateful thanks, also, to the Church Flower Committee for beautiful displays in Church, much enjoyed by all who saw them, parishioners and visitors alike.

OPEN CHURCH

We are so used to seeing Church buildings everywhere we go in this country, that we are in danger of seeing them as little more than background to a photo or, perhaps, as buildings that have always been there and are hardly worth a second glance. A minority of the population uses them on Sundays, of course, and on a rare occasion at another time.

Yet, our mediaeval Parish Churches are almost always the oldest building in a Parish, very often the largest and, in many respects, the most interesting.

We certainly have a very interesting and lovely Church here in Bleadon. It is a Grade I listed building set in the middle of our village. The oldest part (the Chancel) is recorded as having been dedicated in 1317, it has a Norman tub Font, a 14th century carving in the porch, a 15th century pulpit, 14th century tiles, a beautiful East Window and much more.

AND IT IS OPEN FOR AT LEAST 8 HOURS EVERY DAY MONDAY TO FRIDAY for villagers and visitors to sit in quietly, to appreciate the architecture, the skills of craftsmen, to wonder at the changes Bleadon has seen over 7 centuries and, if you are that way inclined, to say a prayer.

Walk around both the inside and the outside of the Church with the help of the Church Guide booklet, look at the list of Rectors going back to 1297, reflect on the changing nature of village life with the help of the Bleadon 700 banners made by John Hickley and stand in silence at the village War Memorials remembering those who gave their lives in two world wars.

YOU DON'T HAVE TO COME TO SERVICES to appreciate this building and benefit from it. Please use it and enjoy it.

ON JUNE 26th we will be celebrating our **PATRONAL AND DEDICATION FESTIVAL** (Church Anniversary), celebrating its beauty and history, commemorating our Patron Saints, Peter and Paul and praying for the future.

Services that day - 10.15am Sung Eucharist and Sunday Club
3.00pm Songs/Hymns of Praise in the Rectory Garden with the Salvation Army Band (in Church if the weather is not good).

Other Special events planned by the Church and Friends of The Church include -
Saturday July 2nd - 7.30pm Silent Auction with Sausage and Mash supper in the Coronation Hall Tickets £2.50
Sunday July 24th Cream Teas and Open Tower afternoon - Tower open 2.00pm, Cream teas at Rookery Nook, Old School Lane 3.00pm
Saturday August 27th Coffee Morning
Saturday September 24th 7.30pm Harvest Supper in the Coronation Hall
Sunday September 25th 10.15am Harvest Festival Family Service
Saturday October 8th Concert by the Llantrisant Male Voice Choir
Saturday October 29th Concert by the New Society Jazz Band

Watch out for posters and other publicity in respect of the above and other special events.

Best wishes,

The Rev'd David Parkinson, Rector Tel: 01934 812297



THE CORONATION HALL



The AGM of the Hall Management Committee was held on April 14th and the reports were received from the Chairman, Booking Officer and Treasurer who announced a surplus of £1219 on the audited accounts.

This was a welcome outcome after the expenditure during the year on Hall improvements, which included:-

- the fitting of a new floor to replace the old quarry tiles, and the sanding and staining of the existing timber floor, to match the new.
- a new sink with extra units in the kitchen together with the fitting of an in-line plumbed hot water dispenser for tea and coffee etc.
- new trestle tables with a trolley for easier movement and light weight easy stack square tables to replace all of the old ones in the main Hall and Jubilee Room.

A new committee was appointed for the year 2005 -2006

Chairman and Licence holder	Len Chamberlain
Vice-Chairman and Village Representative	Tony Pettitt
Secretary " " "	Les Masters
Treasurer and Parish Council Representative	Clive Morris
Parish Council Representative	Keith Pyke
Bleadon Players	Anne Northy -Baker
Ladies Club	Jo Reeves
Bridge Club	Mary Henley
Shortmat Bowls Club	Lynn Riding
Horticultural Society	Chris Cudlipp
Parochial Church Council	Betty Patterson
Friendship Club	Beryl Davis
Baby and Toddler	Cath Davis
Bleadon Brownies	Bella Ware
Booking Officer	Joanne Jones

Len Chamberlain (Chairman)
Newbay Cottage,
21, Coronation Rd.
Bleadon- BS24 0PG
Tel. 01934 814517

VILLAGE NEWS MAGAZINE

The News has had another good year and has attracted several new advertisers, many of them small local businesses and I hope that they will continue to support us in the coming year. Once again I am indebted to Marshall's for sponsoring the additional photo page; this feature has been well received by the villagers and has attracted interest from far and wide. It is now possible to put a short form of the magazine onto the Parish Council website and I have already had responses from ex-Bleadon residents who are interested in the affairs of the village. My thanks once again to John Hickley for his original cover designs and to all those who every quarter deliver the News to the residents and of course to the regular contributors without whom there wouldn't be any news!

Penny Robinson (Editor)

Blood Tide - A Short Story

*Western winds the Pagans bring and tides that bloody tributes wring,
'Till on Bleodun's blood patched sward brave Saxons slew the Godless horde. Anon.*

The Vikings first came in the spring of AD841, at high water, a fresh westerly wind blowing up the funnel-shaped opening of the Severn Sea driving a dozen of their shallow-draft ships deep into the estuary. Helmeted and strangely garbed they emerged like demons from the mist, spreading terror among the isolated communities of Athelney. Some villagers escaped into the surrounding hills but the remaining able-bodied men and women and such livestock as could be found were herded across the foreshore and forced into the ships. Resistance was brutally met. Amhar, Reeve of the Godney Hundred, challenging them in the King's name was killed with a single sword stroke, his chest cleaved open with an axe, ribs spread and his body nailed to the door of the long hall; the obscene sign of the blood eagle. His wife, Malla, desperately attempting to snatch back her daughter, flung herself at a warrior, was knocked senseless, speared and left for dead. Searching for silver and food the raiders gutted and destroyed the mud and wattle dwellings - then departed on the receding tide as swiftly as they'd come.

"Deliver us, O Lord, from the fury of the Norsemen," the Priests intoned, and indeed for the next three years they were spared.

Sunshine through the window opening had woken Malla and she let it soak her face and arms, let the loving warmth ease the dull ache from her crippled body. She smiled and stretched luxuriously, outside insects droned, singing of a new day. Her hut stood alone now. The village had been rebuilt further inland behind a protecting ridge, but had Malla stayed, near Amhar's grave amid the ruins of the long hall. She'd sworn to kill and be killed if ever the Vikings returned.

First to see the sails was Lanval, herding cattle on the high green down jutting out to sea. Driving the beasts into hiding he ran back toward the village shouting as he came.

"Dragon ships! Dragon ships coming!"

Fieldworkers stopped then took up the cry as they swarmed down into the valley. Malla heard and thrust aside her weaving. Snatching up a hide pouch she hobbled toward the down to meet Lanval, grasping his arm, pulling him to her.

"How many? How far?"

"Three or four," he said breathlessly. "They'll be here 'fore noonday, I must haste." Bending to kiss her brow he ran on, "Be brave Malla, God be with you." Far from being frightened she was filled with a fierce excitement as she hurried into hiding to wait the raiders arrival.

A sudden brisk wind from the east had brought a rising sea breaking over the longships' low sides, the vessels quickly lost way and the sails slapped idly. The crews began bailing in desperation as the heaving current forced them westwards toward a high knoll. Lief ordered the masts unstepped and oars unshipped but despaired at the time it took. Wintering at Dubh-Linn had been a mistake; the soft months spent living in Ireland now evident. Now, with the oars double-manned and the rudders hard over the three ships were gradually regained direction, but it would be past noon before they reached land and once ashore Lief feared his indifferent sailors might also prove to be poor soldiers.

The new Reeve, Tudwall, was a warrior turned farmer. A spearsman who'd fought for King Egbert at Ellandun. He'd used the three years well. Food stocks were now cached elsewhere,

as were the weapons they would use to fight the invaders, the protecting ridge had been raised and men trained to handle spear and sword; yet his first command was 'withdraw'. After reporting that Malla should soon be in position, Lanval was sent inland, on horseback, to raise the alarm and summon reinforcements. Meanwhile Tudwall evacuated the people and their possessions that would, with one important exception, leave the village bare.

Malla watched the Vikings clambering overboard to drive in mooring stakes. They splashed ashore and with swords shields and axes hoisted, they quickly disappeared towards the village. Taking a knife from her pouch she limped out, boldly entering the water to cut the ropes and cast the ships adrift.

The water was slack, the tide undergoing that subtle change from flow to ebb. Cut and **push!** Cut and **push!** Yes. A movement of the keel. Cut and **push!** Scrambling back to each ship in turn she heaved at the bows, only satisfied when the drift was visible.

In the village the Vikings found little.

"A pox on this place," shouted Lief. "Let's burn and begone!"

It was a call from a clay-daubed hut that caused the stay. "Here, just covered with straw," laughed Egil, "six mead jars and a wineskin."

"Time enough," Lief rasped, "I've got a throat like Odin's armpit," and all gathered inside to drink the carelessly hidden liquor. Olaf drunkenly tried to open the wineskin but cut into it and wasted the contents. Rising in furious uproar the company threw him out through the doorway but within minutes he was back, dragging Malla by the hair.

"Look what I've found. Lurking behind, knife in hand!" They crowded over, looking down at her.

"By the Gods! She's crooked." Lief shook his head, "A bad omen."

Malla cursed them and struck out frantically but to no avail. Bad omen or no several raped her, risking their members and their souls, then dragged her outside and threw her into a bone pit. They then saw that the Saxons were back, a dozen figures clutching sickles and staves lining the ridge top. Exultantly grabbing up their weapons the Vikings went for them, wildly shouting, charging in a ragged drunken line - onto a hidden hedge of iron. Double ranked behind the ridge were Tudwall's warriors and their firmly grounded spears. Mounted swordsmen, Tudwall's reinforcements, then attacked the raiders on both flanks and the ridge quickly became a killing ground, running with blood. Swinging his double-bladed axe, Lief cut his way back to the shoreline but the ships were gone, half a mile away now across the marshland. Lief the Viking and six others were surrounded and slaughtered there as brutally and cruelly as they had lived. Malla rejoiced in the defeat of the Vikings and her part in it. 'It'll 'come a legend' her friend Lanval had told her. But she drew no pleasure in the manner of their deaths or the despoilment of their remains; a ritualistic affair actively encouraged by the priests.

As certain as a woman is, Malla knew she was with child and so it was.

That summer of AD845, encouraged by the local success, Tudwall took men from the village to join the army under Alderman Eanwulf that met and defeated an invasion of heathen at the mouth of the river Parret. On his return, after the harvest, Tudwall persuaded Malla to return to the village for the winter. There, as the child grew in her, she lived, respected and loved, until her time. Malla was as determined now to bear her child as she had formerly been in hatred of the Vikings. It would be a girl she was sure, in recompense for the daughter she had lost. Malla died in childbirth and was buried with honour. The baby, Norwenna, thrived; taken and raised by Tudwall as promised. She married a merchant and went to live with him in Abone on the Avon where ships still used the Roman-built wharves. Successive generations crossed the Severn to Siluria, went east into Gwent and some returned westwards - to live and to die in Malla's Saxon village sheltering beside the limestone ridge that edges the Somerset marshes.

BLEADON POST OFFICE AND COUNTRY STORES

TEL. 01934 815584

Great news the new Post office has at long last opened its doors for business. All the usual services are available, pensions, banking, postage stamps, and now we can even top up your mobile phone for you.

The shop has expanded its shelf space to include more fresh, local and organic products and with the summer approaching we shall be pleased to sell your surplus garden or allotment produce too. We stock a large range of greetings cards and stationery as well as all your favourite magazines and newspapers, and of course there is a wide range of sweets, cigarettes as well as beers wines and spirits.

We welcome your input, so if you have any suggestions to make, as to how our range of goods may be improved just let us know; we want this to be your shop, so we need to meet your requirements if we possibly can. We hope that we shall soon earn the reputation of stocking those rare items, value and quality!

Planning permission for a tea/coffee shop has been applied for and we hope to have that up and running by the end of July. The internet ready computer will also be 'live' by then and we hope that many of you will come along to relax and enjoy the complete Bleadon experience of 'shopping, sipping and surfing'!

Thank you for your continuing custom, please keep buying locally.



Re-Birth of The Village Post Office



The rain showers that greeted Bleadon on a Saturday in late April did nothing to dampen the enthusiasm of the many villagers who thronged to greet and welcome the return of the Village Post Office.

Owner Mr.Alistair House welcomed everyone to the re-opening after a break of some fifteen months since the previous Post Office and Shop had closed its doors.This decision although received with some disappointment managed to attract some 120 villagers to a subsequent emergency meeting sponsored by the Parish Council when it was decided that something had to be done to ensure future sustainability within the village.

After numerous meetings following up a number of suggestions that proved unworkable a local business man Alistair House indicated that he was willing to support the idea of running a Post Office within his planned Country Store.Although the eventual chosen site was outside the village fence both the Parish Council and indeed the District Council recognized that the proposal fell within Government planning guide lines and permission was granted.

Many hours of planning has obviously gone into this project by both the proprietor and the Parish Council and it is now hoped that the villagers who so earnestly sought its re-opening will now support it by shopping there as often as possible in order to keep the facility within the village for many years.

REMINISCENCES OF BLEADON IN THE 1940-1950 YEARS. -- THE ANCHOR INN

My Great-Grandfather Charles Hart held the license in 1901 followed by his son another Charlie Hart who was my Grandfather.

My father an ex- policeman taught himself to play the piano and used to rattle out the old pub songs. He also built a skittle alley with the help of Joe Gould a retired builder, and gradually revamped the Anchor when he took over the license in 1947. My Mother was good at serving up Goose Suppers and food for parties, skittles etc. and also did bed and breakfast.

At Christmas there were late night extensions and the pub would vibrate with singing and dancing. I had an Aunt Doris whose party piece was to do the splits in the "tap bar" (she was Doris George whose father kept the Queens Arms at one time.) The pub was decorated up and a large Christmas tree had pride of place in the passage and a huge bunch of mistletoe hung outside the tap door. My father taught a budgerigar to talk and it lived in a cage in the tap room. His repertoire included - 'Georgie Porgie pudding and Pie', 'a pint of beer please' 'Ding dong bell pussy's in the well', and various swear words.

Every year people looked forward to the Bleadon Hill Sports, which was started by local farmers, hunt supporters and business men in 1938. They were held at the top of Roman Road in fields belonging to the Poole family and known as the Caterpillar. Each August the committee went to Frederick's, theatre costumiers at Knightstone to hire fancy dress to wear on the day. Some of the committee were Gilbert & Metford Frost, Percy & Derek Palmer, Bob Croker, Mr. Young Mr. Clark Mr. Scull and Sam Wilmot. As a child the excitement started when Mr. Wall came up for a quick drink on the morning usually dressed as John Bull. There were plenty of pony and horse events including a race around the perimeter on cart-horses, and I can remember the Pony Club performing a musical ride. There was a huge crowd, and cars were two deep around the large ring. Buses ran from Weston to the showground. After several changes of venue the Hill Sports still carries on under the name of the Bleadon Country Sports and is now held in our fields just over the boundary in Lympsham. Many of the old events are still kept, musical mats in cars, tossing the sheaf over the bar, (dominated for many years by the Tilley family); a dog race, - they chased a "hare" pulled across the field by a man peddling a bicycle-like contraption. Prizes were vouchers to spend in the saddlery tent, and of course the beer tent was well patronised. Everyone eagerly looked forward to the comic turnout. There were classes for walking groups and also mounted classes. The young farmers of that time used to do a float on a wagon or lorry usually with plenty of water!! There is a tale in our family of the very first comic turnout. The Diment and Frost families decided they would go as gypsies. They put a pig arc on to a cart to make a gypsy wagon, hitched up the horse, and dressed to look the part. They decided that they would have a trial run and went next door to Granny Poole at Lake Farm. They offered clothes pegs for sale, and told fortunes; they were not recognised but as soon as they had left, the Poole family were on the phone, "we've just had a load of gypsies at the door and they've got your little dog" - unbeknown the Frosts little Pomeranian dog 'Judy' had followed them. They later went on to the Hill Sports where Babs Diment told the fortune of none other than Mr. Tiarks.

In those days people had nicknames, Copper and Darkie Banwell, Fred (Stillard) and Stan (Zion) Hart. Albert Jones (Squint) and my great uncle Sidney Hart (lost in the Great War) was known as Hedger. They also had their own party pieces sung at Christmas or other gatherings. Tommy Banwell-Jones sang 'Among My Souvenirs', while Fred Wall favoured 'My Dear Old Dutch'. Cliff Fry sang 'When the red red robin keeps bob-bob-bobbing along, and George Wall 'Mary's Boy Child'. Other favourites were 'Grandfathers Clock', 'Farmers Boy', and 'Nellie Dean'. When a little drunk Stan Hart used to sing 'Clinging to the garden railings'!

At lunch times in the Anchor, Jesse Shepherd and Bob Say local roadmen enjoyed their bread and cheese with a pint of cider; Mr. Gilman the local station master came along on his bike and farm workers came in for a quick pint. There were many farmers and smallholders milking cows at this time with milk

rounds in Weston, Percy Owens, Fred Wall, Metford House, Jim Vowles, Stan and Fred Hart amongst them.

My aunt Sybil lived with us at the Anchor, she never drove a car or rode a bicycle but walked for miles. During the war she walked to work at the B.A.C. factory at Oldmixon, going up Purn Lane and down over Totterdown.

Mr.Vowles employed a lot of men on his farm,Mr.Taylor, Bert Bagg several of the Scotchmer boys and Percy Difford are the ones I can remember. Sometimes in the winter he would host shooting parties on the Bleadon levels when the ducks and geese came with the cold weather .Afterwards they would all came back to the Anchor for refreshments, covered in mud and bringing their numerous gun dogs with them.

Another regular, Mr.Say played a "squeeze box and was always in demand at Christmas.Across the road lived Bill & Ivy Vinson , Ivy was a Birth,Marriages and Deaths registrar for the Weston area ,and once conducted a mock marriage over the bar .Another local was Len Sandford often accompanied by his son-in-law Charlie. Len lived at the Copse and had a bit of a stutter and often stamped his gammy leg when excited. Many other people were regulars at the Anchor,- Jack Peters from Lymsham met up with Reg Gilson on Sunday mornings and there was jovial banter as to which of them had their tape-measure (they were both undertakers.) Bob Starks regularly rode his bike from Loxton to Weston with a dozen trays of eggs to sell strapped on the back and he would call in on his way home.

Met Popham, John Pope and Jack Gamlin came over from East Brent and from Weston came Mr.Varder a polish salesman and Charlie Perkins , the bookmaker with Rose. Frank Milton was another regular who played skittles for the Anchor team, and he later helped us with the haymaking. In the early evening Robert Bees later the landlord of the Brent Knoll Inn and father of the present licensee(Bob), used to come in for a quick one on his way home from his work in Bristol .He would often have a game of darts, table skittles, or shove halfpenny with me if there where no other customers.

The Anchor was the meeting place for the young farmers of the day, George Wall, Henry Amesbury, Guy Gibbs, Doug Raffill, John Frost, Bob Huett, Brenda Wall, Yvonne Sissons, Ann Sandiford, Joan Binding, Maurice Durbin, and Gretta Hart and many more. Most of the dances and parties were held at Birds Assembly Rooms at Winscombe, where my father often did the bar. Their late night venue was Margrates Grill then opposite the Playhouse, for a good meal before going home!
Thus I met my husband and went off to be a farmers wife.!

Sheila Frost. 2005

CORONATION HALL MANAGEMENT COMMITTEE

PRESENTS

ITS

"SUMMER DISCO"

ON

SATURDAY 9TH JULY

8PM - MIDNIGHT

USUAL BAR AND RAFFLE

TICKETS £5

FROM BLEADON POST OFFICE

OR

LES MASTERS (811976)

FLOREAT TERPSICHORE! (As Aled Jones might have said)

It's all the fault of Malcolm Herivel. He mentioned that Beryl and Jim three doors away, were ballroom dancing champions. This made me think they might be able to help start ballroom dancing at the Hall, which indirectly they did by putting me in touch with qualified dance teachers Gill and Pat Fleming.

We did a little negotiation, then advertised our first session and held our breath. None of us knew what to expect, so it was somewhat overwhelming when over forty people flooded into the Jubilee Room in about five minutes. Gill quickly established that most of them wanted to start from scratch and a moment later had them all on their feet walking through a barn dance jive. They then danced it to the music, a roar of applause and cheering followed, and we concluded we were onto a winner.

So, after a long absence, ballroom dancing has returned to the Coronation Hall. Apart from school holidays, we are holding weekly sessions on Wednesdays, from 7.30 till 10.00, and will carry on as long as the demand is there. With any luck this will be for a long time, for the reaction so far has been excellent. The rookies are working hard and making good progress, while the old hands are lending a helping foot, which is much appreciated. The whole atmosphere is cheerful, friendly and relaxed, something I take great pleasure in being part of.

There are no age limits, you do not need to bring a partner and the cost is only £2.50, so come along and see if you could be Bleadon's answer to Aled Jones - or better still, Denise Lewis!

Les Masters

NOTICE THE BOARDS?

The Parish Council is to be congratulated for providing three well designed and well sited notice boards. In particular the system for posting, protecting and removing notices is both neat and ingenious. The Coronation Hall will greatly appreciate the enlarged opportunity for publishing its functions, as I'm sure will many other clubs in the Village.

CALLING ALL BARN DANCERS!

Our St. George's Day Barn Dance was a very cheerful occasion, incidentally raising £315 for the Coronation Hall. If you enjoyed it, or regretfully missed it, make a note of the next one.

SATURDAY 29th OCTOBER.



BLEADON PLAYERS



Our production of Agatha Christie's 'The Hollow' went well, in spite of having its first night on Friday 13th!

Many thanks to our brave audience on both nights. Like all good actors, the Bleadon players are 'resting' during the summer, and hope to back in the autumn.

We are always looking for new members and anyone interested in front or back stage, should please contact:-

Mrs Sandie Gibbon 645135

Village Computing



The Village of Bleadon welcomed a new arrival at the beginning of May which was broadband access for all to the World Wide Web via its Village Computer.

Thanks to BT and their Community Connections programme Bleadon Parish Council were successful in their application bid in being granted a NEC Computer with free internet access for 12 months to the total value of some £1500. The successful entrants also received in addition to the computer equipment a donated Microsoft Office Professional 2003 package.

The Parish Council has agreed to sponsor the free use of the Computer by way of Broadband during opening hours of Bleadon Post Office & Country Stores. This will enable Villagers young and old alike to gain access to the internet and world wide web. The District Council have also agreed to provide a direct link so that anyone using the computer can obtain immediate down loading of their forms and other such like information without the need to travel to Weston-super-Mare.

Our picture shows right to left Mrs Penny Skelley Council Chairman Mr Alistair House Post Office and Country Stores owner together with Mr Bruce Poole Parish Clerk.

MORE BLEADON MEMORIES

When I was about 9 years old we moved to Manor Cottage and having spent all my life in a bungalow I found it strange going upstairs to bed. Our cooking and lighting were by gas and we had to go next door to Manor House to pump water which we carried in buckets to a tub in our kitchen. The toilet was down the garden and to flush this we used buckets of rain water from a big tank.

Along, what is now known as Bleadon Road, past the paddock (behind today's bus shelter), there were two fields divided by a shallow bank, where dozens of rabbits lived. Next came an orchard and on the corner of Chestnut Lane a paddock where mangelwurzels were grown as cattle feed. At the far end of Chestnut Lane, in what is now Barley Cottage, lived the Thorne family, (who later moved to The Veale), while round the corner in Purn Way lived Miss May Wall, after whom the cottage is now named. Next came 'The Dairy' where the day's milk was cooled and bottled. The bottle tops were of cardboard with press out centres. In those days - rain or shine, milking was done in the fields.

At the end of Purn Way was West Town Farm, inhabited by the Farmers. Mrs Farmer had a goat called 'Natasha' who did a good job keeping the hedges and verges tidy in Allotment Lane! Back down the road past orchards where pigs and chickens roamed was Manor Farm where Bert Wall lived with his wife and children Mia, Muriel and John. As children we spent hours at the farm watching calves being born, picking up apples for rough cider etc. - there was always something going on!

Mr Wall had the field opposite Chestnut Lane and at the bottom was a manure heap about 2ft. high. He would plant marrows and pumpkins and when the fruits got to a certain size we would go and choose one and he would scratch our initials on it. We made regular visits but would never touch and when they were ripe we were given them to take home. At the foot of Purn Hill, near a pond later filled in, was another farm Catherine House. Stan Hart lived here with his wife and their daughters Florence and Sheila. It was Florence, who in the 1980's had alterations made and opened it as a public house.

Opposite was the Fork Filling Station, where Ray Goodall did car repairs and Mr Scotchmer sold petrol and took in wireless accumulators to be charged.

Apart from the caravan park, the area near 'The Anchor' is much as it was then, with four alterations. The Curry Cottage was then the 'Little House Café', and instead of a modern house with an inflatable man in the front garden there was a centuries-old farmhouse where Fred Wall had his dairy. The two cottages next door were then four - so I think we can say housing has improved since I was a child.

Sylvia Bird

**Bring & Buy
Books
Tombola
Cakes
Norfolk Lavender
Raffle
Cards**



**WORKING IN
SOMERSET**

Admission: £2.00

THE SOLDIERS, SAILORS, AIRMEN AND FAMILIES

ASSOCIATION - FORCES HELP

Registered Charity Number 210760. Est 1885

"Coffee and Danish"

The Coronation Hall, Bleadon

Friday, 2nd September 2005 - 10.30 am to Noon

BLEADON LADIES CLUB



We are already well into 2005, and have enjoyed some very good speakers, also welcomed many new members. The club is now looking forward to our summer program.

July 12th

We are holding a Bring and Buy and a Cream Tea followed by a Beetle Drive. The caller will be Mr. Chris Cudlipp

August 11th

The Annual Outing this year is to Bradford on Avon. There will be time for a browse around the Market and afterwards a trip on the canal. Cream Teas are available on the boat.

The Club is responsible for taking the trolley around the wards at Weston Hospital. This is once every four weeks on a Wednesday afternoon so can you help?. I would like to take this opportunity to thank Mrs. June Cottrell who has organised this service for many years and we wish every happiness to June and Ivan in their new home

The Ladies Club has lots to offer. So come along and join us .We meet every second Tuesday of the month in Coronation hall at 2.30pm.

For more information ring Barbara on 814362

Bleadon Baby and Toddler Group

We have had a very successful spring with lots of new members joining the group. With both new mums joining and siblings of existing members arriving we have lots of very young babies at the moment.

We had a very colourful Easter bonnet parade last month, which the children enjoyed very much.

We will be having a trip to Court Farm before we break for the school holidays in July.

If there is anyone in the village who has a child under 3, who would like to join please come along to the Coronation Hall on a Wednesday morning between 10am and 12 midday.



Claire Gutsell

BLEADON HORTICULTURAL SOCIETY



The Spring Flower show is now a distant memory, but it was well supported by exhibitors and visitors during the afternoon. The art show/exhibition in the Jubilee Room proved very successful as another attraction.

The illustrated talk by David Usher on the 'History of Hestercombe Gardens' was fascinating and as well as being extremely informative.

We have enjoyed a 'Bring and Buy Sale' and Social evening in May and a good 'Gardener's Question Time' in June.

WISLEY RHS GARDENS, SURREY

On Saturday July 9th, we are running a coach to these world famous gardens. The cost for the whole trip is £12.00p and is open to anyone on a first come first served basis. To reserve a place on the coach please ring me on 01934 813152. **The coach will leave the car park at 7.30am.**

Our next season will start on Saturday September 3rd with the 32nd Annual Flower Show. I wish everyone a successful growing season so that on the day, the Coronation Hall will be bursting at the seams with flowers, vegetables and pot plants, as well as mouth-watering home crafts and imaginative children's exhibits. Schedules will be available from the usual sources in the village as well as from committee members.

Chris Cudlipp

HELPLINES

Advice and Counselling on Alcohol and Drugs:

55a Oxford Street, W-s-M (01934)415376.

Age Concern: 23 Boulevard, W-s-M - (01934) 629192.

Alzheimer's Disease Society: (01934) 514977.

Arthritis Care: (01934) 622808.

Young People With Arthritis: (01934)525037.

Axe District Scouts: Mrs Ann Coombes - (01934) 513699.

Business Link West: (0345) 678100.

Cancer Information Service: (0207) 608 1661 or (01 934) 510230 and (0468) 525525.

Cancer Information and Support Centre: (0117)928 3369.

Carers Centre: 1 Graham Road, W-s-M (01934) 644223. Information and advice for people caring for elderly and disabled relatives at home.

Childline: Freephone (0800) 1111.

Citizens Advice Bureau: Roselawn, Walliscote Grove Road, W-s-M (01934) 621908.

CLIC W-s-M: (01934) 812859.

Community Health Council (Bristol & District): Manulife House, 10 Marlborough Street, Bristol BS1 3NU. Also at Crossroads, Graham Road, W-s-M on Fridays from 9.30am-12.30pm. Ring (0117) 987 3800 out of hours.

Council for Voluntary Services: (01934) 631169.

CRUSE (bereavement help): (01934)628233.

Disability Information Service North Somerset: 3 Manor Court, Locking, W-s-M (01934) 820104.

Disabled Sociability Network: (01934)623752.

Dementia Care Trust: (01934) 522300.

Friends Across North Somerset: The Potteries Community Centre, Langford Road, W-s-M, BS23 3PQ. (01934) 613238. F.A.N.S@ecosse.net

FRIEND (mental health centre): (01934)622292.

Heart, Chest and Stroke Social Club: (01934) 412391.

HIV, AIDS and Sexual Health: (0117) 955 1000.

Horizon Club for the Hard of Hearing: (01934) 629412.

James Macdonald Cancer Trust: (01 934) 510230 or (0468) 525525.

Leukaemia Care Society: (01761) 453703.

Multiple Sclerosis Society (North Somerset and West Mendip Branch): Local information/helpline (01 934) 814499. National helpline: 0808 800 8000.

Myasthenia Gravis Association: (01934) 413371.

North Somerset Gateopener Family Advice and Advocacy Service: (01934) 644452 or 513726.

NSPCC: (0117) 966 4283.

Osteoporosis Group: (01934) 415096 or (01934) 844138.

Rape Helpline: (0117) 935 1707.

Red Cross: (01934) 622844.

RELATE: (marriage guidance) (01934) 627206.

R.S.P.C.A. 172 Locking Road, W-s-M (01934) 627000 or (08705)555999.

St John Ambulance: (01934)629905.

Samaritans: 137 High Street, W-s-M (01934) 632555. SSAFA

Forces Help: (01934) 644024 (11 am-12noon Wednesdays).

Sunshine Radio: Weston General Hospital - (01934) 619252.

Voluntary Agency: (01934) 410190.

Weston and District Muscular Dystrophy Support Group: (01934)419853.

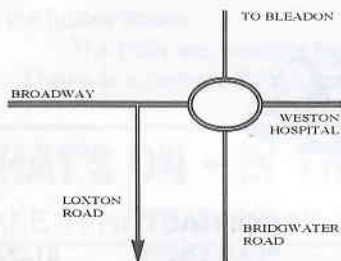
Weston and District Victim Support: (01934) 638179.

WRVS: (0117) 907 7700.

Woodspring Talking News: (01934)622054.

KING'S BARBERS

5 LOXTON ROAD
WESTON-SUPER-MARE



Tracy has moved!

Traditional & Modern Cuts

Ladies Dry Cuts Only

EMERGENCIES

In an emergency, dial 999 for police, fire & ambulance

Electricity: (0345) 651651.

Bristol Water: (0845) 702 3797.

Gas: (0800) 111 999.

Police: North Somerset area - (01934) 635252; Sedgemoor area - (01823) 337911.

Ambulance, Fire, Police, Coastguard: Emergencies: 999.

CHEMISTS

A dispensing service is provided by chemists in Weston after closing hours at the following times:

Monday to Wednesday and Saturday - 5.30pm-8.45pm,

Thursday and Friday to 9.45pm, Sunday 3.45pm

TESCO STORES LTD, Station Road, W-s-M

SAFeway STORES LTD, Somerset Way.

R. H. LTD, MENDIP PHARMACY 331 Locking Road.

Sundays and Bank Holidays 12.00noon - 1.00pm, 6.00pm-8.00pm:

R. H. LTD, MENDIP PHARMACY 331 Locking Road.

For details, including telephone numbers, of pharmacies in your area that are open after 5.30pm on weekdays and open on Sundays, please call NHS Direct on 0845 4647.

LOCAL AUTHORITIES

North Somerset Council: (01934) 888888.

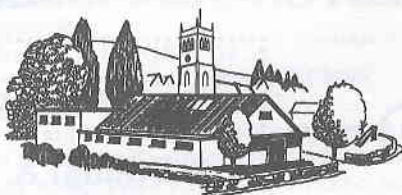
Sedgemoor District Council: (01 278) 435435.

Somerset County Council: (01823) 333451.

HOSPITAL

Weston General Hospital: Switchboard - (01934) 636363.

A LIST OF ORGANISATIONS WHICH REGULARLY USE THE CORONATION HALL



MONDAYS

1.15pm	NEW! Ladies Self-Defence**
2-5pm	Bleadon Bridge Club
7-9pm	Exercise Class **
7.30pm	British Sugarcraft Guild
1st Monday	W.S.M. Branch
7.30	Bleadon Parish Council
2nd Monday	

CONTACT

Mrs A Davies	812920
Mr D Munden	812772
Mrs M Keele 07939	038 071
Mrs R Heath	627163
Mr B Poole, Clerk	01278 787555

TUESDAYS

2-4pm	Bleadon Ladies Group
2nd Tuesday	
2.30-4.30pm	Bleadon Short Mat Bowling Club**
1st,3rd,4th	Oct-June
6-7.30 pm	Brownies**
7.30 pm - Sept-May	Bleadon Photographic Group
1st,2nd,4th,5th	
7.30 pm	Bleadon Horticultural Society
3rd - Oct-May	

Mrs B Pugh	814362
Mr J Ward	812136
Mrs B Ware	811545
Mr K Tapley	623877
Mr C Cudlipp	813152

WEDNESDAYS

10am-noon	Infant Welfare Clinic
2nd & 4th	& Toddler Group
10am-noon	Toddler Group
1st,3rd & 5th	
1.30pm	Yoga Class
7.30pm	Bleadon Players/Rehearsals
7.30pm	Come Dancing

The Health Visitor at the Clinic	
Mrs E Knight	625089
Mrs D Marsh	750438
Mrs S Gibbon	645135
Mr L Masters	811976

THURSDAYS

10-12 noon	Art: Watercolour painting class
8.00pm - Sept-June	Bleadon Folk Dancing Group
1st & 3rd Thurs	
7.30pm	Bleadon Sugarcraft Club
4th Thursday	

Weston College 01275	810659
Mrs J Thorne	814007
Mrs P Webb	01278 684484

FRIDAYS

2-4pm	Bleadon Friendship Club	Mrs J Diment	812217
7.00pm - Sept-May	Short Mat Bowling Club**	Mr J Ward	812136

SUNDAYS

2.30 - Sept-May	Short Mat Bowling Club**	Mr J Ward	812136
-----------------	--------------------------	-----------	--------

**in the Jubilee Room

The Halls are available for hire by private individuals or organisations.

There is a reduced rate for Bleadon residents. ENQUIRIES: 812370

WHAT'S ON - IN THE CORONATION HALLS -

MAKE A NOTE IN YOUR DIARY NOW!

Date	Time:	Event:	Contact:
2nd July	7.30 pm	SILENT AUCTION	Bleadon Church 811490
9th July	7.30 pm	VILLAGE DISCO	Hall Management Cttee 811976
11th July	7.30 pm	Parish Council Meeting	Mr B Pool, Clerk 01278 787555
16th July	9am-12.30 pm	VILLAGE MARKET	Hall Management Cttee 812370
20th Aug	9am-12.30 pm	VILLAGE MARKET	812370
2nd Sept	10am	COFFEE & DANISH	SSAFA 815331
3rd Sept	2pm	AUTUMN FLOWER SHOW	Horticultural Society 812152
12th Sept	7.30 pm	Parish Council Meeting	01278 787555
17th Sept	9am-12.30pm	VILLAGE MARKET	812370
24th Sept	7.30 pm	HARVEST SUPPER	Bleadon Church 811490
10th Oct	7.30 pm	Parish Council Meeting	01278 787555
15th Oct	9.30am-12.30	VILLAGE MARKET	812370
29th Oct	7.30 pm	VILLAGE BARN DANCE	Hall Management Cttee 811976
5th Nov	10 am	COFFEE MORNING	Friendship Club
14th Nov	7.30 pm	Parish Council	01278 787555
19th Nov	9.30am-12.30pm	VILLAGE MARKET	812370
26th Nov	7.30 pm	QUIZ IN AID OF CLIC	Mrs P Dain 812859

Would you like to give an unusual present and donate to charity at the same time?
A book entitled 'Tree-Hunting and Walking in North Somerset' fits these criteria.
The cost of the book is £10.00 with all proceeds going to Bristol Children's Hospital.
Please ring 01934 510604 to place an order.

OFFERS

- REGULAR GRASSCUTTING
- HEDGES & TREES CUT
- SHRUBS PRUNED
- BLOCK PAVING
- FENCE PAINTING
- TURFING
- PATIOS & CHIPPINGS LAID

DECKING ERECTED

**PATIOS & PATHS
PRESSURE WASHED**

Mark Howe
gardening services

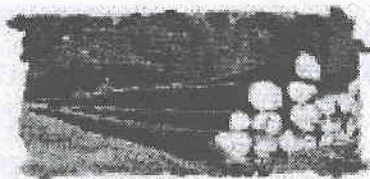
**ALL TYPES OF FENCING
ERECTED & REPAIRED**

SHED ERECTION & REPAIR

9 Malvern Road
Weston-super-Mare

Phone: 01934 413594
Or
0777 327 2003

**GOOD QUALITY SEASONED
HARDWOOD
LOGS FOR SALE**



**GOOD VALUE
PROMPT DELIVERY
SMALL AND LARGE LOADS
AVAILABLE
TEL.- 01934 751378
MOBILE.- 07762 901916**

CONTACT ADDRESSES

EDITOR.....penny.rob@btopenworld.com
PARISH COUNCILwww.bleadonparishcouncil.gov.uk
CHURCHwww.bleadonchurch.info
BLEADONwww.bleadon.org.uk



PC Problems, Upgrades, Internet connections

No callout fee,
7 day local service

Get your computer fixed on site, at your convenience.
Very reasonable rates
Fully qualified

PC Doctor

Tel: 01934 811557
Mobile: 07867 642 542

petpals 
your best friends friend

We visit to feed, walk & play with your
pets, in their own safe environment with
familiar sights and smells



Home Boarding

your dog can stay with one of our
families while you are away

Visit: www.petpals.com

ALL PETS CATERED FOR

- Dog Walking
- Cat Feeding
- Pet at Home Day Visits
- Family Home Boarding
- Fully Insured



Tony or Diane 01934 815060

Email: weston@petpals.com

Visit www.k9zone.co.uk

- All Breeds Welcome
- Bathing
- Clipping & Styling
- Nails Cut
- Insured
- Collection Service
- Easy Parking



For Professional And Caring Dog Grooming

Call Diane or Kim At:

DOGZONE

Accommodation Road, Bleadon

01934 811444

Email: hazenaide@btconnect.com

Pet Care Trust & British Dog Groomers Association Member

Beck's Advance Tech Salon

Hair Removal

No more waxing/shaving, no more stubble or unsightly hair. When the hair has been removed the hair follicle reduces in size and skin becomes soft and smooth.

Full details and prices available on request.

For maximum results it is recommended that a course of 6 treatments is carried out. There is a discount of 20% for a prepaid course of six treatments with the added assurance that should any further treatments be necessary to that area, then they will only be charged at half the single treatment price. Most areas considered.

Initial Consultation & Patch Test all areas (one off payment) £29

Call Becky on **01934 629000**

WANTED

China Glass, Bric a Brac
Old Hallmarked Silver
Old Jewellery
Silver Plate and Cutlery
Tea & Dinner Sets
Medals, Swords etc.
Old Diamond Jewellery
Grandfather Clocks
Oil Paintings (any condition)
Old Picture Frames
Water Colours
Walking Sticks, Stick Stands
Blue & White Pottery
Silver Photo Frames
Royal Doulton, Worcester
Clarice Cliff Pottery
Ruskin, Moorcroft
Leather Bound Books

OLD

Antique Furniture
1920's and 1930's Furniture
Inlaid Furniture
Hallstands, Sideboards
9 Drawer Desks
Chests of Drawers
Display Cabinets
Bookcases, Bureaux
Round Tables
Sets of Chairs
Wall and Mantle Clocks
Barometers
Carriage Clocks
Barley Sugar Furniture
Wind up Gramophones
Musical Boxes
Sculpture, Bronzes
Extending Tables

WE WILL ALSO PURCHASE ENTIRE CONTENTS

WINTERS ANTIQUES

Weston-super-Mare

For A Prompt And Personal Call
Tel. 01934 620118, 01934 814610

Sell with confidence to us

We are L.A.P.A.D.A. Registered Members
you can rely on us for good advice

MR RICHARD WINTERS

WILL BE PLEASED TO CALL ON YOU



Beck's Advance Tech Salon

Now offering

The latest in Technology IPL

Endermologie and Oxyfusion

Permanent Hair Removal

Acne Treatment

Skin Rejuvenation

Full body Rejuvenation

Non-surgical Bum Lift Tummy Tuck

Cellulite and Fat Removal

**No Needle alternative to Botox, collagen
and Fillers**

Age Spots & Pigmentation Removal

Microdermabrasion - Face Peels

Oxygen Facials

- Excellent and quick treatment results
- Safe & approved

Treatments for Men and Women

For more information call Becky on

01934 629000

15b Waterloo Street, 2nd Floor, Weston-super-Mare
Along from the Boulevard above Stanley's Betting shop



ANIMAL PORTRAITS

in full colour Pastel

by Sheila Excell

I love drawing animals from life - they are nearly always much better models than their owners anticipate!

If drawing from life is not an option then good clear photos are the answer.

I am happy to show samples of my work and the full fee is not expected until the customer is quite satisfied.

Horses, Dogs, Cat and Farm animals - anything with four legs!

Prices from £30 (a small head study)

Framing extra.

Phone 01278 760697

Sheila Excell

Little Acre, Church Rd. East Brent

FRANCE HOLIDAY HOME TO LET IN SUNNY SOUTH VENDEE



www.vendeeholidayhouse.co.uk

A fully furnished three bedroom bungalow situated in **St Denis -du- Payre** on the edge of a "reserve naturelle", home to around 120 species of wild birds each year. Within easy reach of **Lucon** and the beautiful beaches at **La Faute, La Tranche** approx 10 miles away. The lively resorts of **La Rochelle** and **Les Sables d'Olonne** approx 30 miles. The accommodation comprises of: fully equipped kitchen/dining room, living room with log fire, TV (French & English Channels), one double bedroom, one twin bedded room, one bedroom with bunk beds and double sofa bed, bathroom/shower room and separate WC, electric heating, garage and additional private parking. Large fenced garden with patio, garden furniture and barbecue. **8m x 4m pool for 2005.**

For full details prices and availability
please ring or e-mail Ray and Yvonne Hicks.
Telephone: +44 (0)1934 811993; mobile 07775928596;
e-mail Raymond.Hicks@Btinternet.com

Fed up fiddling about with troublesome **home computers**?
Simply want the things to work properly?

PLEASE RING US - WE WILL HELP

HOMELINE technology

Call 0870 240 6062 (Standard national call rate)

Subscription entitles you to:

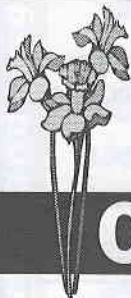
UNLIMITED telephone support - we solve most computer problems over the phone.

FREE annual maintenance visit.

30% OFF home engineering visits.

FREE advice on equipment - we'll even buy it, deliver and set it up for you.

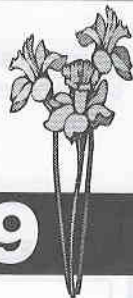
FREE high-risk virus warnings.



***Don't suffer
violence in silence***

Call

0800-69-49-999



for free confidential support and advice

The Domestic Abuse FreeFone Support Line (Daffs) offers a single point of contact for free and confidential advice and support to any person suffering domestic abuse. Call now, protect yourself and anyone you suspect may be suffering.

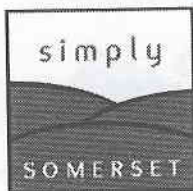
STILLPOINT

Carol Joy DC MMA

Acupressure massage, McTimoney therapy,
Hawaiian bodywork, Life coaching.

Old Oak Farm, Chapel Allerton,
Axbridge, Somerset. BS26 2PD.
tel: 01934 712726
email: info@stillpoint.uk.com

www.stillpoint.uk.com



A great way
to spend
a day or evening out

*Published Diary of Events & Excursions- Minibus Hire- Tailored Special Occasion
Excursions- Days at the Races- Cricket- Somerset Uncovered - Mysteries of Somerset
- Picnics- Golf Days- Bath (Roman Baths/Shopping) - Music Events- Shows &
Festivals- Sporting Events & Activities.*

Why not call us on **01934-812414** or **07766-713342** for further information or a
brochure; email info@simplysomerset.com or visit www.simplysomerset.com

" IT'S THE ONLY WAY IN THE VILLAGE "

PHILIP JAY

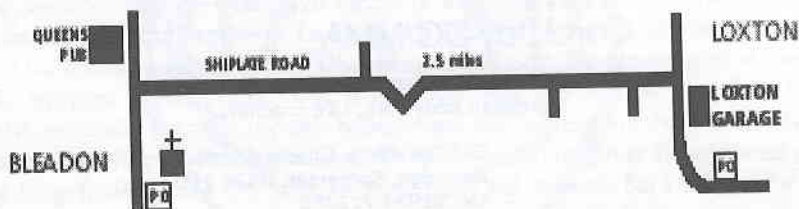
01934 750445 DAY

01934 750439 EVE

**LOXTON
GARAGE**

LOXTON BS26 2XE

philip-jay@loxtton-garage.fsnet.co.uk



Motor Vehicle Repairs ♦ Servicing ♦ Cambelts ♦ Welding ♦ Accident Repairs
Electrical ♦ Fault Codes ♦ Breakdown ♦ Diesel & Petrol ♦ FOC Courtesy Cars

THE SOUTH WEST'S NEWEST GARDEN CENTRE

- Excellent range of gardening products
- 100's of varieties of houseplants, trees and shrubs
- Collections of the more unusual products & plants
- Free expert horticultural advice
- Restaurant open all day offering everything from Sunday roasts to high teas
- All year round free gardening events & festivals, ask in-store for details
- East access & free parking for all
- Just off Junction 22 of the M5

OPEN EVERY DAY

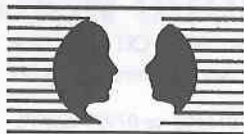
Mon - Sat: 9am - 6pm

Sun: 10am - 4.30pm



Sanders
gardenworld

BRISTOL ROAD, BRENT KNOLL, SOMERST TA9 4HJ Tel 01278 761111



Coping with life's problems and making changes can be difficult, but an experienced professionally trained counsellor can help. To arrange a confidential initial consultation telephone:

"The future doesn't have to be the same as the past..."

Alan Robinson

BACP Registered Practitioner
UKRC Registered Independent Counsellor

01934 744123

(Draycott near Cheddar)

"You don't have to suffer in silence."



For community news and sport
read it first in the

Weston & Somerset
Mercury

Weston's paper

Telephone us on **01934 422500**
with all your local news

E-mail: Newsdesk@thewestonmercury.co.uk
www.thewestonmercury.co.uk



LIZ ALDERSON
GRAPHIC DESIGNER

Appletree Cottage, Old School Lane,
Bleadon, North Somerset, BS24 0PF

t 01934 813197 m 07905 223975
e liz.alderson@virgin.net

design for company literature, corporate identity, magazines,
newsletters, exhibitions, web sites, advertising & direct mail.

Zhara Floral Design

Designer : Deb Tierney

Flowers for all occasions

Weddings - Corporate events - Anniversaries
Births - Bereavements
Traditional, Designer and Exotic Flowers
Arrangements / Bouquets / Hand-ties
and much more

'Sunnymead'

Purn Way, Bleadon, Somerset BS24 0QE

FREE LOCAL DELIVERY



zahra
-to bloom

Free personal consultations
Portfolio available
Please call to order
Tel: 07980 567595
01934 811984 (6-8pm)

BRIDGE GARAGE



VEHICLE SALES • FULL SERVICING FOR ALL MAKES AND MODELS
MOT FACILITIES • VEHICLE DIAGNOSTICS • AIR CONDITIONING SERVICE
FULL VALET SERVICE • ATTENDED FILLING STATION

BRIDGE ROAD
BLEADON
BS24 0AU

Telephone:
e-mail:
Web site:

01934 812206
enquiries@bridgegarage.com
www.bridgegarage.com



BLEADON CHURCH - PARISH MAGAZINE

Monthly 30p

News, Views, Reports
Times of and information about
Services and special events.



To get your copy, phone
Pete Williams on 812020

Also obtainable from Bleadon Post Office

STEPHEN & CO.

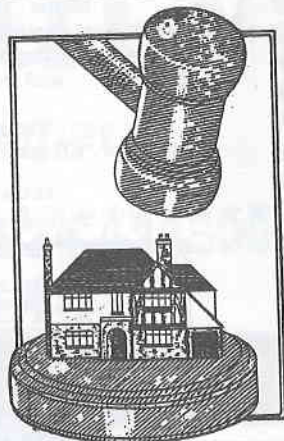
CHARTERED SURVEYORS

01934 - 621101

Professional Advice
on all property matters

Chartered Valuation Surveyors
Auctioneers
Estate agents

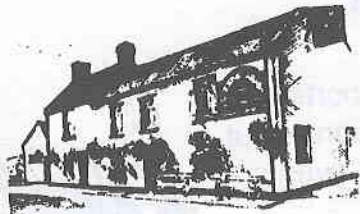
(Next to Town Hall)
Weston-super-Mare BS23 1UP
Fax: (01934) 621519
E-mail: stephenandco@easynet.co.uk
www.stephenand.co.uk



QUEEN'S ARMS

Celtic Way, Bleadon
FREE HOUSE

Dan and Jess welcome you to our traditional village pub with a warm and friendly atmosphere. Relax and enjoy ales direct from the cask and savour our excellent food freshly prepared by our chef.



- CHEFS SPECIAL BOARD
- REGULAR THEME NIGHTS
- GUEST ALES
- SUNDAY NIGHT QUIZ at 8pm
- SKITTLE ALLEY AVAILABLE FOR FUNCTIONS

In the 2004 Good Pub Guide

Tel/Fax 01934 812080 or visit our web site at www.queensarms.co.uk

PLASTECH WINDOWS

**SPECIALISTS IN THE INSTALLATION
OF HIGH QUALITY UPVC**

- ★ doors
- ★ windows
- ★ patio's
- ★ fascias
- ★ cladding
- ★ guttering
- ★ Full range of conservatories

*We offer top quality products
custom made to almost any design*



**A member of
the Guild of
Master Craftsmen**

FENSA

Registered Company

**20 YEARS
EXPERIENCE**



**BRITISH STANDARD
BS 5713 GLASS UNITS**

NO ONE CAN BEAT US ON PRICE & QUALITY

For a prompt & personal service phone
Bleadon (01934) 814500
Mobile: 0777 4475736



SOMERSET FASCIAS



U-PVC SPECIALISTS

- FASCIA BOARDS & SOFFITS
- GUTTERS & DOWNPIPES
- CLADDING
- ROOFING

References on request

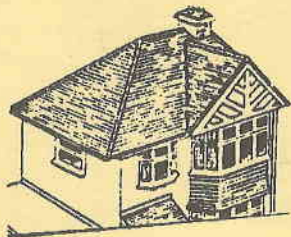
- Competitive Prices - Quality Workmanship

ALL INSTALLATIONS & MATERIALS FULLY GUARANTEED

Tel: 01934 628793

Mobile: 07710 727595

ROOFCHECK



ROOFING CONTRACTORS

PVC-u REPLACEMENT

SPECIALISTS

TEL: 01934 644430 ANYTIME

33a Swiss Road,

Weston-super-Mare BS23 3AY

Member of the Guild of Builders & Contractors

REFERENCES ON REQUEST

This Newsletter is Edited by **PENNY ROBINSON** of 1, The Veale, Bleadon BS24 0NP

THE COVER DESIGN IS BY **JOHN HICKLEY**

Published by **BLEADON PARISH COUNCIL**, Bleadon, North Somerset.

Produced & Printed by **GFS Print** Telephone (01934) 622409 · Fax (01934) 612079