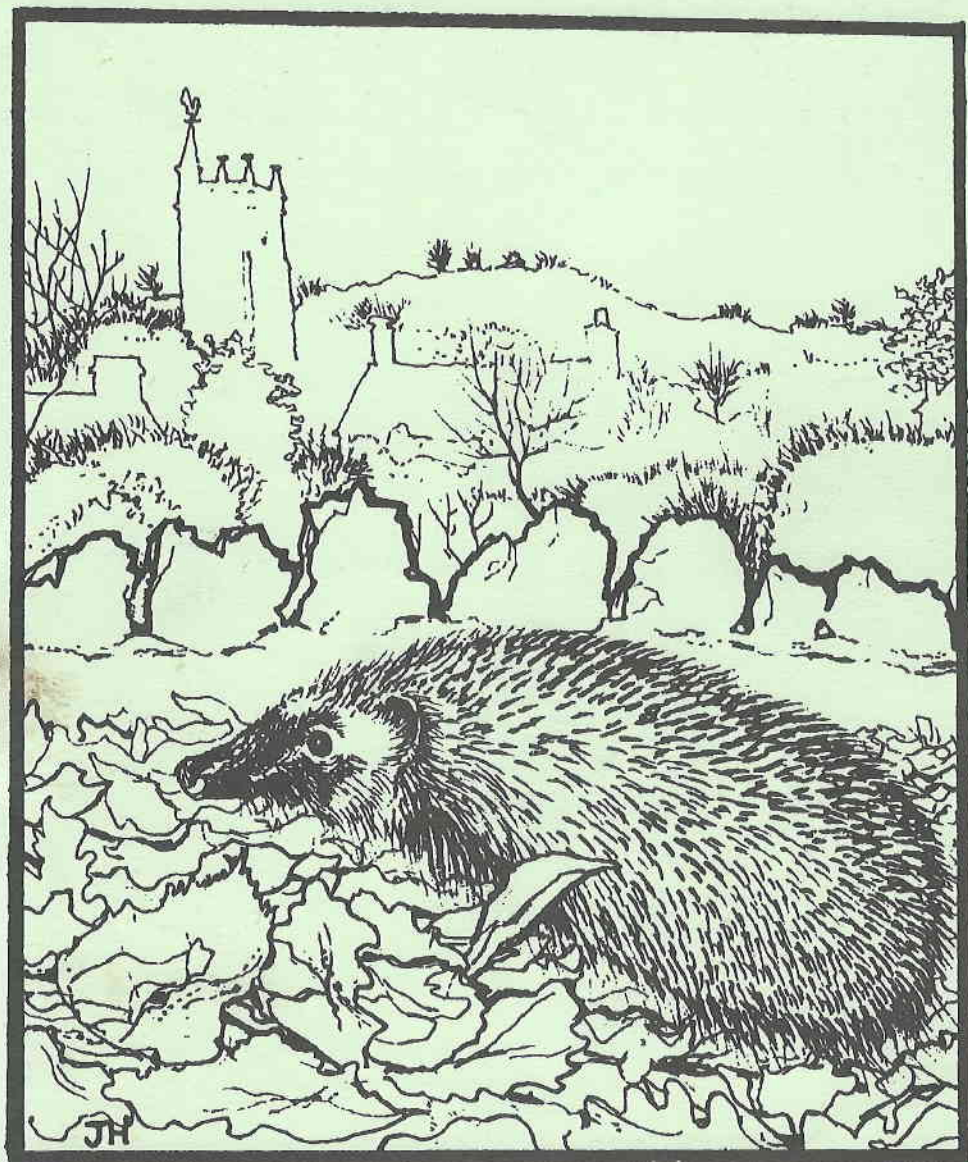


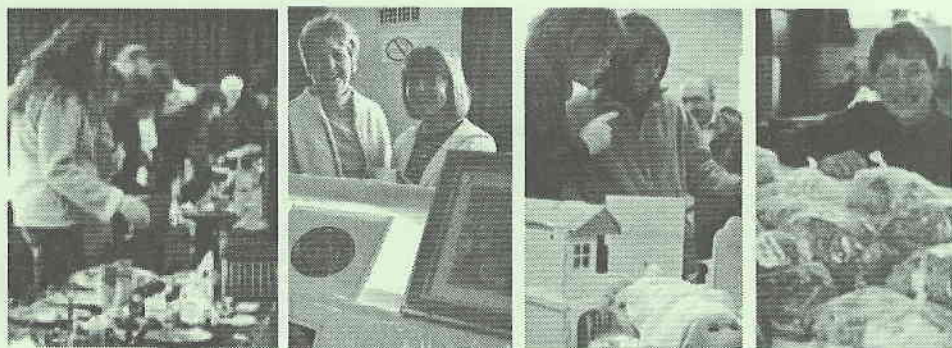
BLEADON



VILLAGE NEWS 64

Bleadon Village Monthly Market

Fresh Produce. Astill's Bread. Cakes. Cheese.
Local Cider. Preserves. Honey. Garden Plants.
Lavender. Crafts. Books. Antiques. Bric-a-Brac.
Refreshments. Gossip & Chat and more...



Saturday 9am

April 16th, May 14th, June 18th, July 16th

Coronation Hall, Bleadon

01934 812370 to book a stall
at this popular monthly market

YOUR PARISH COUNCIL

PENNY SKELLEY [CHAIRMAN] 'MENDIP CROFT', CELTIC WAY, BLEADON. TEL.815331
PENNY ROBINSON [VICE CHAIRMAN] 1, THE VEALE, SHIPLATE RD BLEADON. TEL. 81414
RAY HICKS 'FIDDLER'S VIEW, HILLCOTE BLEADON HILL TEL. 811993
MALCOLM PERRY 'WESTFIELD', 1 THE BARTON, BLEADON. TEL 813940
MARYSHEPPARD 'LITTLEWOOD' BRIDGWATER RD., LYMPSHAM. TEL 812921
KEITH PYKE 8, WHITEGATE CLOSE, BLEADON. TEL 813127
CLIVE MORRIS..... 20, BLEADON MILL, BLEADON. TEL. 811591.
JUSTTN HARVEY-BENNETT THE BEECHES, CELTIC WAY, BLEADON. TEL 811373
ROBERT HOUSE LAKE FARM COTTAGES, SHIPLATE ROAD, BLEADON. TEL 815588

THE PARISH CLERK TO WHOM ALL CORRESPONDENCE SHOULD BE ADDRESSED

IS:- BRUCE POOLE, 'THE CHIPPINGS', 21 STONELEIGH CLOSE,
BURNHAM-ON-SEA, SOMERSET TA8 3EE
TEL. 01278 787555 or e-mail:bruce.poole2@btopenworld.com

The Council meets on the 2nd Monday of the month at 7.30pm, in the Coronation Hall. An agenda is published on the Parish notice board, and any member of the public who wishes to, may attend these meetings and raise any issue of interest at the end of business.

WE AIM TO PUBLISH THE VILLAGE MAGAZINE FOUR TIMES A YEAR-
MARCH, JUNE, SEPTEMBER AND DECEMBER

HOWEVER WE MUST POINT OUT THAT ANY DATE SENSITIVE MATERIAL
SHOULD BE SENT TO THE EDITOR FOR INCLUSION WELL IN ADVANCE AS WE
CANNOT GUARANTEE A DEFINITE PUBLICATION DATE.

The deadline for the next issue will be May 20th 2005

I should like to thank all those of you who help with the distribution of the magazine, and I do hope that I can count on your future support. If there are any others out there who would like to help with deliveries, please let me know. (tel.814142)
Our aim is to provide a copy free to every household in the Village, if you don't get one delivered to your door, you may be able to pick up a copy from the village shop.

UNLESS OTHERWISE STATED THE OPINIONS AND COMMENTS EXPRESSED IN THIS NEWSLETTER ARE THOSE OF THE CONTRIBUTOR AND NOT OF BLEADON PARISH COUNCIL. ANYONE WHO HAS ANY COMMENT TO MAKE ABOUT THIS PUBLICATION SHOULD CONTACT THE EDITOR. IF YOU DISAGREE WITH ANY OF THE VIEWS EXPRESSED YOU HAVE THE RIGHT OF REPLY!

BYONE BLEADON

MANY OF THE PHOTOS THAT WERE DISPLAYED IN LAST YEAR'S EXHIBITION HAVE NOW BEEN PUT ON DISC.

THESE DISCS MAY BE ORDERED FROM PENNY ROBINSON TEL: 01934 814142

A CD-ROM (for PCs only, not Mac) £5.00p

A DVD (plays on most DVD players) £8.50p

A PROPORTION OF THE PROFITS FROM THE SALE OF THESE DISCS WILL BE DONATED TO THE CORONATION HALL FUND.

See www.bleadonparishcouncil.gov.uk for more details



Lympsham Pre-School mission statement.

To prepare children for school life; academically and socially in an environment that allows children to grow in confidence and ability. Dealing with the whole child and creating a safe and warm atmosphere.

- ❖ Opened in 1992
- ❖ Fully Qualified Staff
- ❖ Close link to Lympsham C of E VC First School
- ❖ Set in school hall
- ❖ Use of kitchen facilities
- ❖ Attractive outdoor area for children to play and learn
- ❖ Registered for children age 2 _ to 5 years
- ❖ Government funded for over 3's
- ❖ Open 9 – 12noon Monday to Friday
- ❖ Warm and welcoming environment
- ❖ Holiday club available during school holidays 9am-5.15pm
- ❖ We accept children for between one and five sessions per week

Our Ofsted inspection report of 2004 said "The children are confident to try new experiences showing a positive approach to their learning. They show curiosity and are excellent at exploring the wealth of relevant and stimulating activities that are provided for them."

Please contact us to arrange your free trial morning!

Contact Deborah Smith supervisor for more details and a prospectus on 07743 188865 or email: debra@hemingwaycorp.com . Alternatively leave a message on 01934 812131.

Manor Hall, Rectory Way, Lympsham, Somerset, BS24 0EW Registered Charity No. 1024967

CHAIRMAN'S REPORT



May I start this first report of 2005 with good Parish Council news! In December 2004, your Parish Council gained quality status. We are only the third Council in Somerset to achieve this, and this major award gives us an acknowledged accreditation, which should lead to future grants. The Chairman of the North Somerset Council presented the award in January in the Coronation Hall at the Public Meeting. I was very pleased and proud to accept the certificate on behalf of the Parish Council.

More recently, we have also been awarded a BT Internet-Ready PC. The judges' decision, from among hundreds of entries, was that our idea of the possible location of this equipment in the new Post Office would benefit the whole community

We also launched the concept of the Village Plan at a Public Meeting in January and were delighted by the large attendance, which led to many volunteering to assist on the four sub-committees necessary for development of the Plan. This large project, led by the community and only guided by the Parish Council, is well underway with much determination and enthusiasm from all involved. Progress reports will be posted on the Village web site and summarized in the Village News.

All of the above topics are covered fully within this edition of the Village News. I simply close with the quote: "without Vision, there is no Progress".

Penny Skelley, Chairman, Parish Council

ADVERTISING IN THE VILLAGE NEWS

These are the current advertising tariffs for our Village News Magazine:-

- **FULL PAGE = £50**
- **HALF PAGE = £30**
- **THIRD of PAGE = £25**
- **QUARTER PAGE = £20**

This is an annual fee and covers the cost of advertising in all of the four issues. We aim to publish the magazine in June, September December, and March. For further information contact Penny on 814142.

NB at the moment there is no charge for small personal ads.

HEARING SERVICES

R Gethin RHAD MSHAA

40 Meadow Street, Weston-super-Mare

01934 620376

Home Visiting Service Available



*Registered Member of
The British Chiroprody
Association*

PAULINE M. FRY

MSSCh MBChA

Qualified Chiroprodist

Home Visits Tel: 01934 812094

5 Totterdown Lane

Bleadon

Weston-super-Mare

North Somerset BS24 9LU

e.mail: PaulineMFry@AOL.com

QUALIFIED ELECTRICIAN

(EST. 1995)

Steve Insley

WSM 812709

07971 413603



*No Quotation Charge
No Call Out Charge
No Job Too Small
No Obligation - No VAT*

Electrical Installation Work (Minor Works Only)

- Security Lights • Extra Lights • Extra Sockets • Telephone Extensions •
- Replacement Fittings • Door Bells • Fault Finding ... Etc. Etc. •
- Full Apprentice Served JIB Graded Electrical - City & Guilds - 16th Edition Regs •

QUALITY COUNCIL STATUS



Bleadon Parish Council received the award for obtaining Quality Council Status at the commencement of The Village Plan Public Meeting on Saturday 15th January. The Picture shows the Chairman Mrs Penny Skelley receiving this prestigious award from Councillor Glyn Duck Chairman of North Somerset Council. Others included in the picture are Councillors Clive Morris Justin Harvey-Bennett Penny Robinson Malcolm Perry Ray Hicks Mary Sheppard and Keith Pyke.

Chairman Mrs Penny Skelley said "I am proud and delighted to receive this award on behalf of the Parish Council. It underlines the professionalism of our clerk and council in helping to provide the best possible and most cost effective services to the people of our village. We will continue to develop partnership working."

The concept of Quality Parish Councils was introduced by the Government in the Rural White Paper in 2000 and was officially launched on 1 July 2003. Alun Michael MP the Minister responsible for Local Government Issues said of the Scheme that it provides 'confirmation and assurance that those awarded with Quality status are representative, competent, well managed, and able to take an enhanced role'.

In order to meet the requirements of The Quality Parish Council Scheme, the Council passed a number of specified Quality Tests. These included:

- The publication of an Annual Report
- The preparation of accounts in line with Accounts and Audit Regulations
- Effective communication with the production of the Parish magazine, weekly information on notice boards in the village Council website and consultation exercises
- Electoral mandate requirements which were met in the May 2003 local elections
- Qualifications of the Town Clerk. Bruce Poole received the Assessment and Qualification Alliance award in February last year which accompanied the Quality Status Scheme
- The adoption of a Code of Conduct for Councillors which all Councillors at the Council have adhered to
- The number of Council meetings held and the involvement of the public through the Annual Parish Meeting and other such Open Forums.



QUALITY
PARISH
COUNCIL

The Council has Quality Parish Status for 4 years and will be able to use the Quality logo during this period. It is the 124th Council to do so out of a possible 9500 Councils in England & Wales and the third in North Somerset.

Quality Councils were introduced in 2003 as part of the Government's drive to modernise local government and ensure that all local authorities are in touch with the communities they serve. It recognises that local councils have demonstrated the ability to work effectively within set standards to provide a representative and active body capable of playing a stronger role in the community.

Quality Councils are empowered to approach the District Council and seek to deliver services locally either under a partnership or devolved arrangement. It is also empowered to seek special funding from DEFRA for specific projects within the parish.

CONTACTUS REPORT, FEBRUARY, 2005

I was recently asked whether Contactus was still in existence and at first felt very much disturbed by the question. Although we do not especially court publicity I should certainly hate to think that anyone, who has a worrying problem with which it might lie within our competence to help, should not know that we are still around. It is certainly true that we have had very few calls for help lately; but we have been as active as ever in welcoming newcomers to our village and presenting them with information packs.

We are very conscious that it is a much longer time than usual since we had our last "Welcome Gathering" in the Coronation Hall: this is because the rate of inflow into our village has slowed down markedly in the last eighteen months and we need to wait for at least twenty-four families to move in to make such gatherings both socially and financially viable. The next gathering is planned to take place this April and in addition to the printed invitations that will be sent out, each newcomer since the last gathering will receive our sincere letter of apology and explanation for the long wait some of them have had.

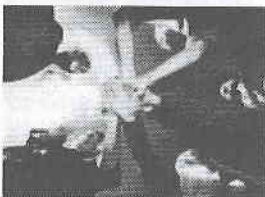
The slower rate of inflow has actually caused us several other problems, the main one being that it is now far less easy to be sure whether there has been a change of ownership or not. Formerly when a Sale-board went up we began to look out for the Sold board and eventually its consequent removal, at which point we called to bid our newcomers "Welcome!" Now, however, because of difficulties created by the present very high cost of houses the appearance of a Sale-board is often followed by a long period of inaction followed by the board's removal so that we have to contact people we know in that area to discover whether there are new owners there or not. In this respect an ideal situation would be to have a representative in every road or house-grouping in the village to inform us of moves in your vicinity.

If some of you feel you would be willing to help us in this area, please be kind enough to contact Philip or Mary Ashley on Tel: 812667 or me, John Thomlinson on Tel: 812436. Finally, if by chance we have failed, despite our best endeavours, to welcome any one of you to our lovely village, please accept our most abject apologies and get in touch as above.

Our warm greetings to you all,

John Thomlinson (Chairman)

Bleadon Parish Council Awarded BT Internet -Ready PC



The Council has been awarded a NEC internet ready PC and a 12 month connection to BT Yahoo Anytime as part of the BT Community Connections award scheme. In addition Microsoft Office software is included as part of the enhanced winning package-

Bleadon Parish Council was among hundreds that entered in the South West and obviously impressed judges with its idea about how an Internet-ready PC would benefit its local community.



WESTON-DIAL-A-RIDE



For a village Bleadon has very reasonable bus services (the 83 and 102/112), but for the elderly and disabled there is still a gap in transport provision.

The bus route can be too far away, or up too steep a hill; at the other end in Weston the destination (Nithsdale Road Surgery, for example) may be nowhere near our bus routes. Taxis are available of course, but the double trip is rather expensive.

With any luck this gap could be plugged in part, at least, by Weston-Dial-a-Ride, an organisation that has operated for some time in Weston. It is gradually expanding and widening its scope, so a logical next step would be an extension to Bleadon Village.

As far as I can ascertain it works like this. To join the scheme you pay £3.00 a year. When you wish to visit Weston or wherever you would ring Dial-a-Ride and arrange a pick up time from your home, to return, you would ring or make prior arrangement.

The current cost I believe is £1.30 approximately. The transport is by mini bus or if necessary a Medical car equipped for disabled people.

GOOD NEWS..... It has been confirmed that this service will be available in Bleadon from April. All those interested should contact 'WESTON-DIAL-A-RIDE' on 01934 644373 to request an information pack and details of enrolment.

If you need to be convinced of how good this service is then ring

Beryl.C.Davis tel 813363

Bleadon Church May Fayre - Bric a brac stall



Yes, it's that time of year again and I am on the scrounge! Please could you look out saleable items for collection or you can leave them in the car port at 5 Fern Lea (thanks to Gill Williams). This year I will have to be very selective about the electrical items I can take. They must be in perfect working order. Knick-knacks, kitchen, china, garage/garden tools, small furniture, bedding, toys etc are all acceptable. This has been an amazing fund-raiser in the past so hopefully we can have another fantastic stall. Many thanks in advance.

Sandra Lowton, Churchwarden WSM 413034

Horse World

Horse World is reliant on the kindness of supporters and members. Every penny helps us to rescue, rehabilitate and rehome equines in need. Have you considered making **HorseWorld** your Give As You Earn Charity?

Find out more about supporting **HorseWorld** by visiting www.horseworld.org.uk

Registered Charity No 206749



HorseWorld
THE FRIENDS OF BRISTOL HORSES SOCIETY

TICK YOUR BOXES CAREFULLY

Were you one of the 25% (approx) of Bleadon's adult population who packed into the Coronation Hall in January to hear all about the Bleadon Village Plan? I was because, although I am not really convinced of the need for such a plan the Parish Council are obviously determined to have one, in which case I behoves me to do my best to ensure that it is as sensible and well informed as possible.

I, therefore, offered my services and duly became one of the 2.5% (approx) involved in the preparation of the plan. There are action groups and a steering committee who have laboured mightily and are bringing forth (perhaps by now have brought forth) a questionnaire which we are all asked to complete. Please, I urge you, complete that questionnaire.

This might seem a strange request from such a sceptical person but consider this the Village Plan is to be based on the opinions and wishes of the residents. If the Parish Council do not have this information to the fullest possible extent they could proceed in all good faith and still produce a distorted result. So, as we are to have a plan, let us all do our bit to make it as realistic as possible.

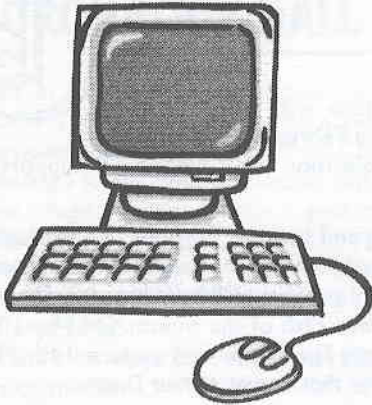
Now when it comes to realism I was rather perturbed to detect in the leaflet advertising the public meeting, in the presentation at the meeting, and in the introduction to two of the action group meetings an undue emphasis on the inevitability of change. Of course a certain amount of change will happen but does it have to be large scale, and in any case can you plan for it? (For example the village did not plan the closure of the old post office not the location of the prospective new one.)

The great expansion of the village took place in the 1960's and 1970's when, following the provision of mains drainage, over 130 houses were built on Greenfield land, fundamentally altering the areas off Shiplate Road, Coronation Road, and Bleadon Road. In the 18 year since we moved here, however, only 56 have been built, of which 30 are on the old industrial site of Bleadon Mill and the rest on small infill sites within the village, resulting in no loss of open land. So if there has been no significant change in 18 years why should we expect it in the near future? The North Somerset Local Plan, due to run until 2011, is currently at the scrutiny stage. It shows no proposals for development in Bleadon, so why should we anticipate any? I think it will be sufficient for the Village Plan to make it clear that the northern and eastern sides of the village will always be unsuitable for development because this would bring more traffic right through the middle of the village on to narrow country lanes.

Various small scale changes have taken place, however, and for the better. The community facility at the Coronation Hall is vastly improved and accommodates more activities and events - bowls, bridge, dramatics, the monthly market for instance. Two action groups are considering additions to the list which will feature in the questionnaire. Another improvement has been the signposting of out footpaths together with the provision of new gates and stiles, and a useful diversion. Again two action groups have put forward suggestions for further improvements.

It is good that about 20 ordinary residents have become involved in thinking about our village and ways of improving it. The chance for everyone else to weigh in comes with the questionnaire, so give it plenty of thought and tick the boxes. If none of the choices seem right, do as I always do and write your opinion in the nearest space. In that way you answer the question you would like to have been asked which could well be the most important one. Just remember that your opinion is as valid as anyone else's!

Les Masters



www.xscomputersupplies.com

CDr, DVDr, Ink Cartridges, Hardware
Unit 8 Purn House Farm,
Bleadon

Tel. 01934 811155

Hours of business:-
10.00am – 5.00pm Weekdays
10.00am – 1.00pm Saturdays

White & Stoneman

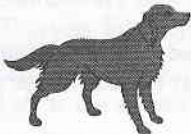
Carpentry and Joinery Specialists

**For a professional and friendly service
call us for a free quote.**

Doors - Windows - Stairs - Loft Conversions
Refurbishments - Flooring - Gates - Kitchens

Tel: Ardene Stoneman 01934 811077 Mobile: 07986 187741

www.whiteandstoneman.co.uk enquiries@whiteandstoneman.co.uk



**IF YOU OWN A DOG PLEASE DO NOT ALLOW IT TO FOUL THE
FOOTPATHS AND VERGES OF OUR VILLAGE. THE RESULTING
MESS IS UNSIGHTLY AND A SOURCE OF INFECTION.
BE A GOOD CITIZEN AND CARRY A POOP-SCOOP OR A
PLASTIC BAG AND TAKE THE MESS HOME.
PLEASE DON'T LEAVE IT FOR OTHERS TO CLEAN UP.**

BLEADON LADIES CLUB



The Ladies Club ended 2004 on a very happy note with a Christmas luncheon at Batch Hotel, following this in January and February we enjoyed an informative talk about Steep Holm and heard 'Television Tales' from a T.V supporting actor.

Now in March, as we begin to look forward to spring and summer, why not join the Ladies Club. It is a wonderful chance to meet new people, make new friends and enjoy some very interesting speakers on all sorts of subjects. Our April meeting will be 'A Victorian Servant', presented by Mrs. Pat Hayes and will take place on the 12th of the month. On May 10th, Mr. Brian Allinson will be speaking on 'The Outback with Five Ladies' and on June 14th, Mrs. Pauline Kidner from Secret World will discuss 'Wildlife that Comes to Your Door'.

As well as our meetings The Ladies Club takes the trolleys around the Hospital wards for patients to purchase sweets and other goods. We are looking at the moment for a few more volunteers. So if you can spare a few hours once every four weeks to help us it would be wonderful.

The Club meets at Coronation Hall the second Tuesday of the month at 2-30pm. So do come along. Visitors and new members are always welcome. Have a chat, a cup of tea and enjoy good company.

For more information ring Barbara on 814362.



I would like to take this opportunity to sincerely thank everyone who sent letters and cards to me following the sad passing of Eileen on January 31st.

Due to her poor health during the last few years Eileen had not seen many of her old friends in the village, but she certainly had not been forgotten.

Many from the Village attended the service at Corpus Christi, including David, our Rector, and this was very much appreciated. I regret that there was not time for me to thank everyone before leaving, but you were all in my thoughts.

This coming May, Eileen and I would have been married for 56 years, so close to the magic 60.

But it was not to be.

Len Chamberlain



To all of my friends in and around Bleadon Village, I would like to say a big thank you for all your thoughtful words of support, cards, flowers and well wishes whilst I have been in hospital.

I have been overwhelmed with the kindness and support I have received from everyone. Thanks to the dedication and efforts of the doctors and nursing staff at Weston General Hospital,

I have been told that I will make a full recovery in time.

**Grace Gammon
2 Fern Lea**

CORONATION HALL REPORT



Back in 1985, having just moved to the village I decided to attend The Hall AGM just as a matter of interest, having previously served four years as Chairman of Hutton Village Hall. At the close of the meeting I found myself co-opted onto the committee together with Peter Lindsay, also a new village resident. Within a year or so Peter was elected Chairman with me as Vice-Chairman.

I recall the Christmas Dinner-Dances, which were always very popular, the Committee provided a 3-course hot meal, and there was dancing to a live band called Atlantis' - and all for £5.00p!

Jumble sales were common fund-raising events, and if we made £100 or so we considered it worthwhile.

In 1994 we sought and obtained Charity status.

Earlier in 1992 a steering committee had been formed to consider the possibility of an extension to replace the old 'scout hut'. Building commenced in 1995, with completion some three years later, having overcome the many problems encountered along the way. Much has been achieved over the past twenty years and we now have two fully equipped Halls of which this Village can be justly proud.

Improvements, of course, are on-going, all due to our dedicated, hard working committee, along with the active support of the Parish Council.

Our AGM will be held on Thursday April 4th at 7.30pm. and village residents are welcome to attend in order to voice their views as regards the Hall Management.

Len Chamberlain, Chairman

CHURCH OF ST.PETER & ST.PAUL

I am very grateful to David Lowton and our augmented choir for once again preparing a special Passiontide Service of Anthems, Hymns and Readings on Sunday 13th March.

Easter tide is early this year and so will have past by the time you all read this. I hope that it has been a blessed time for you.

Sunday 3rd April. - the 2nd Sunday of Easter at 10.15am. Easter Hymns of Praise /Family Service.

And looking further ahead:-

Sunday 24th April. - the 5th of Easter at 6.30pm the Service will be led by the Weston Gospel Male Voice Choir.

Sunday 1st May. - the 6th of Easter, The May Fayre Weekend with Flowers in the Church.

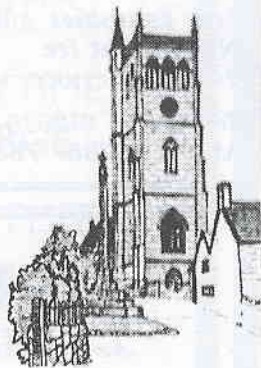
Thursday 5th May. - Ascension Day Eucharist at 7.30pm.

Stolen Statue(?)

Left at the Rectory - a small stone statue perhaps stolen from a local garden - is it yours?

Rev'd David Parkinson (Rector)

Tel. 812297



WATERHOUSE ELECTRICAL & ENGINEERING SERVICES

Commercial • Domestic • Industrial Installations

Now incorporating a Plumbing & Heating Division

1 Lakeside Barns, Shiplate Road, Bleadon, Weston-super-Mare BS24 0NY.

Corgi Registered
198748

Tel 01934 813803
Mobile 07860 597463

National Inspection Council for
Electrical Installation Contracting



CHATTERLEY PLUMBING & HEATING

All types of plumbing work undertaken

- Servicing of boilers and fires
- Taps and washing machines
- Central heating
- Bathroom installation

Free Estimates given
No call out fee
24 hour Service

Tel: 01934 812629
Mobile: 07887 768877



Tiny Toes

day nursery and baby unit

New and fully equipped

DAY NURSERY

Located in Uphill

Offering a friendly, loving, safe & spacious
learning environment for your child

For more information, our prospectus or to arrange a visit,
call us

(01934) 412779

The Old Barn, Uphill Road South, Uphill



Connoisseur CHOICE S

1st Class Catering!

BUFFETS OR FULL SERVICE

MENUS FOR ALL OCCASIONS

PRICES FROM £3.00 PER PERSON

CATERING FOR ALL SIZE PARTIES!

DELIVERED ANY PLACE, ANYTIME
FREE OF ANY EXTRA CHARGE

FULL WAITRESS SERVICE SUPPLIED

COMPREHENSIVE RANGE OF
SIT DOWN MENUS AVAILABLE

VERY COMPETITIVE PRICES YOU
CHOOSE THE MENU
AND THE VENUE - WE DO THE REST

PURN HOUSE FARM, BLEADON BS24 0QE. TEL 01934 814899



Books Wanted

We would appreciate any unwanted books for sale at our regular stall at the May Fair, Village Market and other charity events in the coming year. For collection please ring Pete Williams (812020) or Sue Court (813343).

Bleadon Beat

Crime trends

Once again the village has been targeted by burglars with properties being attacked at Bleadon Mill and Rectory Lane during October and November. With this in mind I urge all householders to consider having an alarm fitted as this is the best deterrent to any intruder. Many feel that alarms offer little deterrent to a burglar however the figures for this village, as elsewhere, show otherwise. A burglar will always go for the easy target therefore a home that is without an alarm is always at greater risk than the one with. Alarms are now fairly cheap with an average system costing in the region of £350. They are also much more reliable than previously and require far less wiring making them much less intrusive. We will never stop all burglaries but we could make it a lot more difficult for the criminal. Fit an alarm, activate it and the chances are the burglar will go next door or perhaps even the next village. Remember, it's too late fitting an alarm after you've been burgled! If you would like more information about security or have any other concerns then please contact me on WsM 638181 or drop in at the monthly village surgery at the Church Room.



Village Surgery Dates

Friday 22nd April, 20th May, 10th June

12.30pm to 2pm at the Church Room.

Pc 2307 Adrian Woolcott.

New No. 638123 (answer machine)

HQ No. for non-emergencies 01275 818181

Bleadon Players



The Grand Old Duke of York and his ten thousand men have marched up and down the Bleadon Hill for the last time and gone back up north!

Thank you to all those who came to see our pantomime. We donated a third of our takings to the Tsunami Appeal.

After much deliberation we have decided to perform an Agatha Christie play called 'The Hollow' and when we have worked out 'who did it' we shall invite you to come along and test your powers of detection on May 13th and 14th at 7.30pm in the Coronation Hall. Tickets will be available at the village shop or on the door.

BLEADON YOUTH CLUB MANAGEMENT COMMITTEE

We are hoping to start a junior section of the Youth Club and would like to hear from anyone interested in forming and leading it.

If you would like to discuss this with us, please call into the Youth Club any Thursday evening and speak to a Club Leader or contact me at the Rectory.

The Rev'd David Parkinson

Chairman Bleadon Youth Club Management Committee

Tel. 812297

**MISSED THE DISCO?
NEVER MIND THE NEXT ONE WILL
BE ON JULY 9TH**

**IN THE MEANTIME WE PRESENT A
ST. GEORGE'S DAY BARN DANCE.
IVYTHORN TRADITIONAL MUSIC**

CALLER: IAN HALL

SATURDAY APRIL 23RD

8PM – MIDNIGHT

USUAL BAR AND RAFFLE

TICKETS £5 FROM VILLAGE SHOP OR 81 1976

NUMBERS WILL BE LIMITED



**Arthurian
Adventure**

Visit ArthurianAdventure.com.

Our WebSite celebrates the legends, the places, the art, the literature, and the myths of King Arthur and of all things Arthurian in Somerset and the West Country

Buy at our E-shop: Jewellery Gifts Collectables Cards

SPEEDWATCH

Many of us have noticed (or think we have noticed) an increase in the speed and density of the traffic through the village since the A370 was closed for bridge repairs. Whether or not this was the cause of the increase, few people will disagree with the suggestion that some drivers go through the village far too fast.

In an attempt to slow these people down we have formed a Speedwatch which has the approval of the police. We monitor speeds with a camera sold to the Parish council by the police and a note is made of those vehicles exceeding 35 m.p.h. This information is passed to the police who write a polite letter to the offenders asking them to reduce their speed in future. Should this have no effect and the offenders registration number is picked up by us again the police write a second letter in more formal terms warning them that this type of behaviour could render them liable to prosecution. Such prosecution is not proceeded with on the strength of Speedwatch evidence but the police take steps to obtain their own evidence.

We think we have seen a tendency for traffic speeds to reduce where Speedwatch is operating. It must be remembered that offenders will be receiving letters on the strength of speeding in Hutton, Uphill and other villages where these steps are being taken. We have Speedwatch operating in Bleadon Road and Bridge Road but there is a definite demand to extend this to cover Shiplate Road. (This area has now been approved by the police). We think the job is worth doing but we could do with some help. If anybody wishes to join the Speedwatch team which only takes one or two hours a month, they have only to give a call to :-

Bill Ardley on 01934 813591 and he will be pleased to give you more information

Editor's note

I'm sure everyone agrees with the idea of Speedwatch in our Village. How strange it is then for the most part that drivers hate the thought of speed cameras in our towns, cities and major roads ...surely the rule is ... no speed ... no fine . In the USA they don't have too many cameras, they just have cops who appear from nowhere and fine you on the spot, mark your license and make you feel very sorry that you broke the law!

Darryl Gwynne and Sarah Brooks

R.R. # 5
Georgetown
Ontario, Canada L7G 4S8

Before moving to Canada with my parents my twin brother David and I spent many idyllic summers in Bleadon with our grandmother Elizabeth Gore. During the war, Elizabeth and her children Jack, Joan, Ivor and Pat were evacuated to the village from Bristol. Elizabeth lived on in Bleadon until the 1980s in a wonderful old stone cottage at 3 Eastfield Cottages on Shiplate Road. My mother Joan met my father Trevor Gwynne at the Coronation Hall. Here are some of their memories of the 1940s.

Joan Gore's Story

Following the death of her husband in 1937, Elizabeth Gore and her four children moved into 22 Cabot Street with her parents Charlotte and Albert Glanville. Bedminster was bombed heavily during the blitz in 1940. 22 Cabot Street was hit when a single incendiary bomb penetrated the roof and ended up burning inside a chest of drawers in an upstairs bedroom. An air-raid warden saved the house from further damage by removing a window and kicking the chest of drawers out into the street below (subsequently the Gore kids needed a clothing parcel from Canada to replace items lost to the bomb).

Before this incident the family had been sleeping in the cellar and sheltering during bombing raids in the coal cupboard under the stairs. Following the close call with the incendiary bomb the Gores were invited to use a neighbour's Anderson shelter. Bedminster was heavily blitzed and on the night of 24th November 1940 St. John's Church, adjacent to Cabot Street, was hit. The ancient church was set ablaze and subsequently burnt out by incendiary bombs. Joan also recalled a "land mine" (heavy bomb on a parachute) landing the graveyard. The next day some of the more unsavoury boys in the neighbourhood were running around displaying unearthed bones! The Gores felt the Anderson shelter to be lifted by the explosion and subsequently the air raid wardens deemed the structure unsafe. The families spent the rest of the night sheltering in the vault room of a nearby factory. As they left the damaged Anderson shelter, 11 year-old Joan remembers seeing an unexploded incendiary bomb partly buried in the soil nearby. She was awed by the fact that the whole town seemed to be on fire and, with a recent Sunday school lesson in her mind, wondered if Armageddon had finally arrived.

Elizabeth's sisters Emma and Hilda, and their children, left Bedminster for the safer confines of the Amesbury's farm in the village of Loxton. Nearby in Bleadon lived Rosy, Elizabeth's school friend (from St Johns School days in Bedminster) who had married a local thatcher named Wilf Body. Rosy suggested that Elizabeth bring the "kiddies" away from the blitz to Bleadon and so Elizabeth and her three youngest (Jack came later) moved to new digs in the Bleadon rectory where they were installed in a wing off the house's scullery by their hosts the Rev. Powys-Davis and his wife Zara.

Once she had moved her family to Bleadon, Elizabeth thought that they would be safe from further bombing. However, they did endure one last "blitz" when a few incendiary bombs intended for a nearby airfield (actually a "dummy" airfield" of wooden aeroplanes designed to detract bombing raids from the real aerodrome in Locking) landed on Bleadon. The only casualty that Joan recalls was a cow receiving an incendiary "through its back." During the raid the Gore family and their hosts sheltered than night under the stairs in the Rectory. To the children from Bedminster, hardened to the horrors of the Bristol blitz, this was a rather mild affair. Joan confesses to joining her siblings and scaring their hostess Zara Powys-Davies by simulating the noise of bombs when banging on the sheets of hardboard lining their shelter area.

The Gores soon left the Rectory to move into the "2 up 2 down" 3 Eastfield Cottages on Shiplate Road, a crowded house as it was shared with Annie and Allen Watson and their children Jaqueline and Geraldine. After a year or so the Watsons moved out and 3 Eastfield became Elizabeth Gores' home for more than 30 years.

When she was old enough Joan worked in retail jobs in Weston where she met her first husband George Peat who was with the air force in Locking. Against the wishes of her mother, Joan took out a 10-pound inheritance (from her grandfather) from the bank to fund her travel up to Leeds to meet George's parents. On her return she was "let go"

from her Weston job. She then worked in Vennel's Dairy, driving an old milk van delivering milk in Weston (where she remembers delivering milk to the Weston home of film actress Deborah Kerr). Joan's brother Ivor and their neighbour Jimmy Crandon (of 1 Eastfield Cottages) were also employed at Vennels and she remembers the boys helping her to pull the auxiliary petrol tank lever on the milk van (which had no petrol gauge) after the vehicle ran low on fuel going up the "cut" between Weston and Bleadon. Indeed, "dairymaid" was Joan's occupation on her and George's 1947 marriage entry in the records of St. Peter and St Paul's Church, Bleadon.

George Peat was eventually invalided with tuberculosis developed from his time in the tanks corps in India. After two years he succumbed to his disease. Elizabeth travelled north to Leeds to bring Joan "home" to Bleadon. Joan quickly returned to the dairy trade, this time driving a fancy electric milk float for Bligh's Dairy and delivering milk along the country lanes around Bleadon and Bleadon Hill.

Trevor's Story

Born in the Rhondda Valley, Wales, Trevor Gwynne worked in a coal mine at age 14 before joining the merchant navy in May, 1944.

In February 1947, while serving as steward on board oil tanker M/V British Confidence enroute from Abadan in the Persian Gulf to Falmouth England, Trevor met "a distinguished and pleasant gentleman," Frank Cyril Tiarks, along with his traveling companion, Miss Noreen O'Connor (who became notorious for the Loxton murder of Marie Buls, a maid to the Tiarks family). Frank Tiarks was at the time Executive Officer of the Anglo-Iranian Oil Company.

During the six-week homeward bound voyage, Mr. Tiarks got to know Trevor and asked if he intended to make seafaring a lifelong career. He informed Trevor that his chauffeur was retiring and, if he wished, there was a position for him in Loxton.

Upon arrival at Falmouth, Trevor visited Mr Tiarks and took up residence at Loxton Lodge as chauffeur. Enterprising F. C. Tiarks eventually shipped the whole Gwynne family from South Wales to Loxton with Trevor's father Sidney (an army cook during the war) being installed as the chef at the Lodge. Trevor recalls many special times in Loxton in the late '40s including a trip to Chewton Mendip for the annual "point to point meet." Other members of the Tiarks family came for the races, including Mr. Tiarks' granddaughter, Henrietta Joan (now Marchioness of Tavestock) who was about nine at the time.

The "local" for Loxton residents was a 15 minute bicycle ride to the New Inn in the village of Cross. However, for dances in those days Loxton residents headed along Shiplate Road over Wonderstone Hill to Bleadon. It was at a "whist drive and dance" at Bleadon's Coronation Hall in early 1950 that Trevor met Joan. They married three months later. After the wedding (ceremony at Loxton Church; reception at 3 Eastfield Cottages) they caught the train to Bristol and moved into their new home. They lived in Filton for 14 years before emigrating to Canada in 1966.

Darryl Gwynne

dgwynne@utm.utoronto.ca

(Whose own bride has very deep Bleadon roots). Darryl met and married Sarah Brooks in Perth, Western Australia and recently discovered that her 4x great grandparents Charles Brookes and Joan Gilling founded three generations of Brooks in Wonderstone, just up the road from Eastfield cottages, following their marriage at St Peter and St Paul's Church Bleadon on 30th May 1775.

MEMORIES OF BLEADON IN THE 1930s

When I was little there was no mains water or sewerage in the village. Our water came from a well (pulled up by a bucket on a rope) and we had an outside toilet across the garden. Our garden was large and we had plenty of space to play. It had a high wall along one side and we would collect snails and "race" them up the gateposts!

Next door lived Freddy Caple and family. One day my Mum went missing for a little while and when she came back said she had been to help Mr Caple. The rooms were not very big and Mrs Caple slid off the chair while reading the paper so they had to lift the table to get her out! Further up the lane lived Mr Goodman and his daughters (they did laundry). One day he asked Hazel Say (aged about 6years) and me (nearly 5) to go on an errand - "but ask your Mother first". We had to go to Mr Parker (the blacksmith) and ask for a tin of elbow grease and a bottle of butterfly oil. Off we set most importantly - not much traffic and everybody knew us - and delivered our message. Mr Parker was sorry he didn't have what we wanted but if Mr Goodman came tomorrow it would be ready. We gave the message to Mr Goodman and he gave us sixpence. I think of him every year on April Fool's Day!!

Bob Say worked with a Mr Green from Copse Corner. They would cycle round the village with their hooks, scythe, rake and brushes and clean up verges, hedges, gutters and cut channels in the verges to let the water run off the road etc. They always made a good job and cleaned up the mess afterwards.

Further up the lane was the Mission. Mr Bathe from Meadow Street in Weston would cycle out on a Sunday to take a service which was always well attended. We said prayers, sang hymns and he played the concertina, and as we left he would say 'goodbye' and give us a piece of pineapple rock which went into our mouths and a wrapped chocolate caramel which went into our pockets.

In the summer he would come out with his housekeeper and we would have games and races on South Hill and finish up with buns and lemonade. One year we were supposed to go back to the Mission for prayers but Hazel and I decided that wasn't a good idea and ran off home. My Mum came in from the garden to see what we were doing. We were sitting up in my bed shoes and all on - waiting for the prayers to be over!

At the top of the lane lived a Mr Crumpler, and if your ball went over his wall you never got it back! Next door lived Mr and Mrs Avery, - he liked to go fishing for eels and she would cook them and do 'jellied eels' and we nearly always had a basinful.

Across the road at Riverside lived Edwin and Hetty Gilson (brother and sister). He was a master carpenter and made, amongst other things hay wagons usually painted blue and red. He was also the village undertaker and made coffins when necessary. As a little girl I spent hours handing him nails and screws and although he was deaf we got on well. Hetty was always busy cooking and doing very fine cotton crochet, she showed me how but it wasn't white when I finished! My Mum had gone to Mrs Luscombe's shop for her one day and she gave me a piece of freshly made cake, it was caraway seed cake and I didn't like it - but didn't like to say so!

Behind the Avery's house, Mr Vinson had a shop selling hardware, paraffin etc. and next came the garage (now Bridge garage). We used to take our accumulators there to be 'charged up' for the wireless.

On the opposite corner Mr and Mrs Vinson lived in The Triangle, there was a tennis court in front with a pavilion and there was a tennis club.

Halfway along Bridge Road was the shop run by Mrs Luscombe where we would buy all our sweets. She also sold most groceries, all loose in the days before pre-packaging. When Mrs Luscombe bought new shoes she would give them to my Mum to wear to 'break them in' as she had bunions!

Next to the shop was the Police House. We had various policemen over the years and we

children would chat to them when they were out on their bikes. The one I remember was Mr Garland, (he had a big black dog) and it was said that he fined his wife because she set the chimney on fire!

Now we come to entrance of the Quarry, run by Mr Young, most days they would blast for stone and when the whistle blew you took cover fast.

Further along was 'The Victoria' pub it only sold beer and cider but was always busy. Some very good times were had there and more than one person over the years crossed the road and ended up in the rhyne!! Behind the 'Vic' was an overflowing spring of lovely clean, cold water in which grew very good watercress which anyone was free to pick. There was a paddock on the corner with a tumbledown barn and the rhyne along the front was nice and clear, but the part round the corner (opposite the Hall) was just a drain, rather smelly at times. Now that area is all built over, the spring is piped under the road into the rhyne on the opposite side.

That tells you something about Bridge Road in the 1930s. In my next piece I'll deal with another part of the village.

Sylvia Bird

BLEADON HORTICULTURAL SOCIETY

The Christmas Beetle Drive and American style supper was an extremely sociable and fun evening, with Jean Evans emerging as the overall winner of the magnificent tin of Christmas chocolates. A special award of a gardening gnome was made to Betty Elliot in recognition of the fact that so many of her playing partners let her down in not being able to throw the required numbers for her to complete her beetles!

In January we were treated to a fascinating talk on orchids, given by Howard Burnett. He emphasised that these wonderful plants are not as difficult to grow as many people imagine. Will we be seeing specimen orchids in any of our future shows I ask myself?

Dr George Hargreaves gave us many mouth watering glimpses of lots of gardens of Somerset, including three that we have visited as a Society in the past four years. These were the Bristol Botanic garden, Lady Farm, near Bath and Hestercombe near Taunton. The many views of Hestercombe will live in our memories when we entertain David Usher on Tuesday April 19th at 7.30pm. His illustrated talk is called "The Restoration of Hestercombe Gardens" and is open to anyone at £1 admission.

At the time of writing we are preparing for the 31st Spring Flower Show, but this will be but a memory when this issue reaches you! We are indebted to Maggie and Tony Pettitt who have undertaken over many years to get the schedules out on time.

Plant Sale and Social

This will be on May 17th at 7.30pm

Gardeners' Question Time - Tuesday June 21st

I'm sure several of our readers have one or two gardening problems that they would like sorted out. Could you please put any of your questions in writing and get them to me well in advance of the meeting so that the members of the panel know what to expect.

Wisley RHS Garden Visit

We anticipate leaving the Village at 7.30am to travel to the World famous RHS Garden. Keep an eye out for further details.

Chris Cudlipp

A Military Affair

Dinner, highpoint of the day at the Greenleas Retirement Home, was over. Bill and Ben left their table together: Ben pausing to thank the kitchen staff, Bill making his way to the hallway notice board in faint hope of promised entertainment. The stair lift was suddenly busy, rattling between floors like an ancient fairground ride. Gradually the bustle died, slipping into the torpor of another Greenleas afternoon.

"All downhill from now," Ben observed, joining his friend. "Anything on?"

Bill shook his head, "Not a sausage, bloody film for tomorrow's been cancelled too."

"Let's go for a walk then."

Bill turned, "OK, I'll get me coat. I've been meanin' to 'ave a chat."

Both were ex-Service Warrant Officers and though Ben had subsequently been commissioned, Bill didn't consider this an improvement, the opposite in fact; once a WO always a WO was his view.

The tide was out, banishing the sea halfway to Wales that showed sharp and bright in the distance. A cloud of roost-seeking gulls came wheeling in, side-slipping to land on the beach lawns, their young beginning a hunched-backed clamour for food and attention.

"Storm on its way" said Bill eyeing the horizon.

"Well you should know, old fish head" admitted Ben, "but it could just be early closing day at the tip."

Their route took them striding past the bowling greens where a ladies match was in progress. Bill halted and screwed up his face, causing bushy eyebrows to jut forward alarmingly.

"Get among that lot and I could do some *serious* damage."

"To yourself most like, just thinking about it's playing havoc with your hernia."

The ladies changed ends, a full figure in white blouse and trim grey skirt half smiled in passing.

"I'll join that's what!" Bill said with sudden enthusiasm, "they often do it indoors on a mat."

Both dissolved into laughter at the thought.

"Might not let you join the ladies," chuckled Ben, "well, not right away."

They'd turned to resume their march when Bill slowed, leaning confidently.

"What do you reckon to the new woman, Mrs Parsons?"

"I'm not sure...." Ben paused, then thoughtfully, "is her first name Dolly? I feel it should be."

Bill frowned, "No, Isabel. Ahh... Dolly *Parton*, I get your meanin'. Yes, she was very near the front when they were issued. Anyways," he went on, "I'm sittin' on her table next week, 'cos Tompkins the Teeth's going into dock for a bit." He tapped his chest and mimicked a superior manner, "And hi have been ch-hosen to keep the prominent Mrs P company."

Ben listened gravely to Bill's scheme, as he put it, 'to come alongside' Mrs Parsons. He knew the effects of swapping tables in a place like Greenleas, in normal circumstances it could rumble on for months. It also risked Bill falling foul of the female Mafia. On the bright side, perhaps Miss Tompkins would get the medics to sort out her blessed teeth. Mealtimes they could be heard clear across the dining room; rattling like bolts in a bucket. It was driving him mad.

As planned, Bill took his new placement, causing a few sidelong glances and whispered comments.

The other two table occupants were small eaters and invariably left early allowing him to give Isabel his undivided attention. Wisely, he had not overdone the sartorial effort; smart casual the order of the day with his good crop of grey hair neatly trimmed. By mid-week he was accompanying her to the lounge and on Friday Ben met them in the hallway dressed for outdoors; Bill in his best rig now, badged blazer and significantly striped tie.

"Hi Ben, nice day, just goin' for a stroll across the park. Have you met Mrs Parsons - Isabel?"

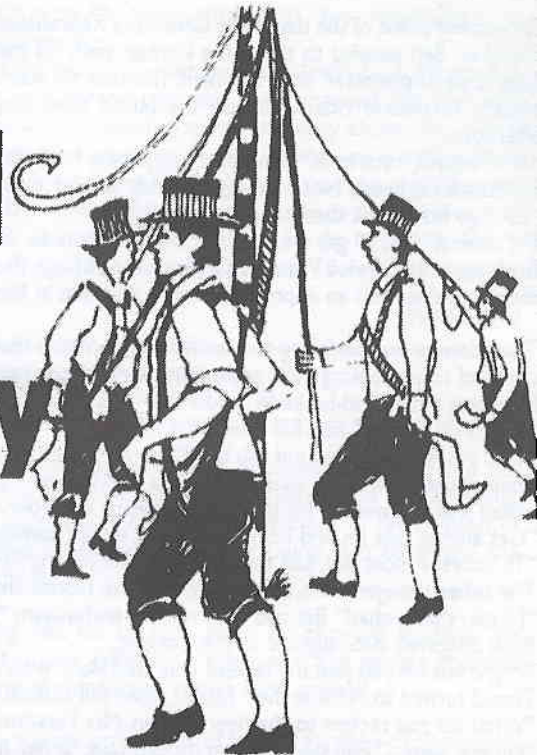
She was not much shorter than Bill, groomed and neat in appearance and looking decidedly less pneumatic with a coat on. They made a handsome couple.

He shook her hand. "No, not had the pleasure," I wonder if he has, Ben thought, the randy old goat.

Too soon perhaps, but whatever there'd be no marking time at the bowling greens today.

★ Bleadon Village ★

Annual May Day Fayre



Bank Holiday Monday
2nd May 2005
11.00am – 4.00pm

Bar, Refreshments, Stalls and Sideshowes all day
Morris Men, Jazz Band and Children's events
Entry 25p INCLUDES Lucky Programme Draw
First Prize: £50

OFFERS

- REGULAR GRASSCUTTING
- HEDGES & TREES CUT
- SHRUBS PRUNED
- BLOCK PAVING
- FENCE PAINTING
- TURFING
- PATIOS & CHIPPINGS LAID

Mark Howe
gardening services

**ALL TYPES OF FENCING
ERECTED & REPAIRED**

SHED ERECTION & REPAIR

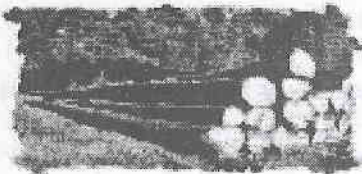
DECKING ERECTED

**PATIOS & PATHS
PRESSURE WASHED**

9 Malvern Road
Weston-super-Mare

Phone: 01934 413594
Or
0777 327 2003

**GOOD QUALITY SEASONED
HARDWOOD
LOGS FOR SALE**



**GOOD VALUE
PROMPT DELIVERY
SMALL AND LARGE LOADS
AVAILABLE
TEL- 01934 751378
MOBILE.- 07762 901916**

CONTACT ADDRESSES

EDITOR.....penny.rob@btopenworld.com
PARISH COUNCILwww.bleadonparishcouncil.gov.uk
CHURCHwww.bleadonchurch.info
BLEADONwww.bleadon.org.uk

A LIST OF ORGANISATIONS WHICH REGULARLY USE THE CORONATION HALL



MONDAYS

2pm-5pm

BLEADON BRIDGE CLUB

CONTACT

Mr D Munden 812772

7-9pm

EXERCISE CLASS**

Mrs Marie Keele
07939 038 071

7:30pm

BRITISH SUGARCRAFT GUILD
W-S-M BRANCH

Mrs R Heath
627163

1st Monday

7:30pm

BLEADON PARISH COUNCIL

Mr Bruce Poole, Clerk
01278 787555

2nd Monday

TUESDAYS

2pm-4pm

BLEADON LADIES GROUP

Mrs B Pugh 814362

2nd Tuesday

2.30pm-4.30pm

BLEADON SHORT MAT BOWLING CLUB**

Mr J Ward 812136

1st, 3rd, 4th

Oct-May

6pm-7:30pm

BROWNIES**

Mrs B Ware 811545

7:30pm Sept - May

BLEADON PHOTOGRAPHIC GROUP

Mr K Tapley 623877

1st, 2nd, 4th & 5th

Sept - May

7:30pm

BLEADON HORTICULTURAL SOCIETY Mr C Cudlipp 813152

3rd Tuesday Oct-May

WEDNESDAYS

10am-12 noon

INFANT WELFARE CLINIC &
TODDLER GROUP

The Health Visitor
at the Clinic

2nd & 4th Wed

10am-12 noon

TODDLER GROUP

Mrs Elise Knight
625089

1st & 3rd & 5th

1.30

Yoga Class

Mrs Denise Marsh
750438

7:30pm

BLEADON PLAYERS/REHEARSALS

Mrs Sandy Gibbon
645135

THURSDAYS

10am-12 noon

ART: WATERCOLOUR PAINTING

Weston College
01275 810659

8:00pm Sept - June
1st & 3rd Thursday's

BLEADON FOLK DANCING GROUP

Mrs J Thorne 814007

7.30pm
4th Thursday

SOMERSET SUGARCRAFT GROUP
(name tbc) New

Mrs P Webb
01278 684484

FRIDAYS

2pm-4pm

BLEADON FRIENDSHIP CLUB

Mrs J Diment 812217

7:00pm Sept - May

SHORT MAT BOWLING CLUB**

Mr J Ward 812136

SUNDAYS

2.30pm Sept - May

SHORT MAT BOWLING CLUB**

Mr J Ward 812136

** in the Jubilee Room

The Halls are available for hire by any private individual or organisation.

There is a reduced rate for Bleadon villagers.

ENQUIRIES to Mrs J Jones: 812370

WHAT'S ON - IN THE CORONATION HALLS -

MAKE A NOTE IN YOUR DIARY NOW!

Date	Time:	Event:	Contact:
9th April	7.30 pm	MUSICAL EVENING	Bleadon Church
11th April	7.30 pm	Parish Council Meeting	
14th April	7.30 pm	Hall Management Committee AGM	
		The first half hour is open to the public	
16th April	9-12.30 pm	VILLAGE MARKET	812370
23rd April	7.30 pm	VILLAGE BARN DANCE	Hall Management Cttee
27th April	7.30 pm	CONTACTUS Welcome Meeting	812436
2nd May	7.30 pm	MAY FAYRE & ART EXHIBITION	811490
9th May	7.30 pm	Parish Council Meeting	
13th & 14th May	7.30 pm	BLEADON PLAYERS' PRODUCTION	
14th May	9-12.30	VILLAGE MARKET	812370
13th June	7.30 pm	Parish Council Meeting	
18th June	9-12.30	VILLAGE MARKET	812370
2nd July	7.30 pm	SILENT AUCTION	Bleadon Church 811490
9th July	7.30 pm	VILLAGE DISCO	Hall Management Cttee
11th July	7.30 pm	Parish Council Meeting	
16th July	9-12.30	VILLAGE MARKET	812370

Would you like to give an unusual present and donate to charity at the same time? A book entitled 'Tree-Hunting and Walking in North Somerset' fits these criteria. The cost of the book is £10.00 with all proceeds going to Bristol Children's Hospital. Please ring 01934 510604 to place an order.

Bleadon parish plan



A packed house

Nearly 200 people packed the Coronation Hall on 15 January to hear about the parish plan. It was standing room only for many villagers at this inaugural event. For a while it looked like some would be locked out because of lack of space. But on a tide of community self-help tables were passed head-over-head to create more space.

The plan explained

A 20 minute on-screen presentation explained the reason for having a village plan. We heard how it could shape our future, what it might include and how the whole community can help in the production of the plan.

The presentation explained that the government wants local communities to take more control of their own lives. Through Village Plans it is giving us the right to say what we want doing in our neighbourhood and the ability to engage with the powers that can help get it done.

Our village plan will help us find out what our community needs in the future and work out how to deliver it.

Feedback

At the village plan event you gave us plenty of feedback on what you most value and most want to improve in the parish. We had hundreds of suggestions from those that attended.

You also told us what ideas you liked and disliked on the village plan leaflet.

Now that we have a good idea about what rings your bells we can focus our research in the future.

Four themes for action

To help decide what this community needs in the future, four volunteer action groups have been set up to work on the key themes of the plan. We were very fortunate to get around 24 volunteers at the event to help with the action groups.

The four themes are:

Economy and prosperity, whose key priorities are:

- to increase local job opportunities and reduce the need to commute out of the area
- secure the prosperity of residents
- encourage enterprise

Well-being and safety, whose key priorities are:

- improve road safety
- reduce crime and fear of crime
- reduce anti-social behaviour
- maximise opportunities for older people to live full and independent lives in the community

- improve access and choice of housing for all
- promote healthy and active lifestyles

Learning and leisure throughout life, whose key priorities are:

- develop and promote enjoyment of our environment
- improve opportunities for play
- promote healthy and active lifestyles
- promote effective social inclusion
- widen participation in learning
- improve existing and create new community learning facilities

Environment, whose main priorities are:

- protect and improve the quality of our natural and built environment
- improve traffic management
- improve footpaths and access to our countryside
- ensure that future building development is in character and sustainable
- meeting future housing needs

If you would like to help

Each of these action groups has a tremendous amount of work to do. Each needs as much help as it can get. If you would like to be part of any of these action groups please contact Keith Pyke on 01934 813 127. You can always leave a message.

Or email keith.pyke@n-somerset.gov.uk. The groups usually meet once a month.

Steering committee

The action groups are already busy with research and creative ideas for the future of Bleadon. The results of their labours are fed back to the Bleadon Plan Steering Committee, which ultimately has responsibility for producing the Bleadon Village Plan. The steering committee met for the first time on Friday 4 March to elect its management team and hear feedback from the action groups.

Meetings of the steering committee are open to the public. Future dates will be posted on the village noticeboards.

Community questionnaire

We are now working on the production of an extensive questionnaire to go to all households and businesses in the parish. Results from this questionnaire will provide a "health check" on the parish and help each of the action groups to deliver what the community needs in the future.

The steering committee have already realised that this consultation and information gathering is vital to the success of our village plan. We need to get it right. So the questionnaire is not likely to reach you until early May.

We hope to have neighbourhood co-ordinators to deliver and collect the questionnaires and to help ensure that everyone has the chance to participate.

If you can help with distribution and collection of questionnaires in your neighbourhood please contact the volunteer co-ordinator Andy Hickson on 01934 812 977.

We plan to put the questionnaire on the Bleadon Parish Council website, so you will be able to complete the questionnaire on-line.

For regular up-dates on how the plan is progressing please visit www.bleadonparishcouncil.gov.uk

Bleadon is changing for the better. Be part of our brighter future.

Keith Pyke, Bleadon Plan Steering Committee

Beck's Advance Tech Salon

Hair Removal

No more waxing/shaving, no more stubble or unsightly hair. When the hair has been removed the hair follicle reduces in size and skin becomes soft and smooth.

Full details and prices available on request.

For maximum results it is recommended that a course of 6 treatments is carried out. There is a discount of 20% for a prepaid course of six treatments with the added assurance that should any further treatments be necessary to that area, then they will only be charged at half the single treatment price. Most areas considered.

Initial Consultation & Patch Test all areas (one off payment) £29

Call Becky on **01934 629000**

WANTED

China Glass, Bric a Brac
Old Hallmarked Silver
Old Jewellery
Silver Plate and Cutlery
Tea & Dinner Sets
Medals, Swords etc.
Old Diamond Jewellery
Grandfather Clocks
Oil Paintings (any condition)
Old Picture Frames
Water Colours
Walking Sticks, Stick Stands
Blue & White Pottery
Silver Photo Frames
Royal Doulton, Worcester
Clarice Cliff Pottery
Ruskin, Moorcroft
Leather Bound Books

OLD

Antique Furniture
1920's and 1930's Furniture
Inlaid Furniture
Hallstands, Sideboards
9 Drawer Desks
Chests of Drawers
Display Cabinets
Bookcases, Bureaux
Round Tables
Sets of Chairs
Wall and Mantle Clocks
Barometers
Carriage Clocks
Barley Sugar Furniture
Wind up Gramophones
Musical Boxes
Sculpture, Bronzes
Extending Tables

WE WILL ALSO PURCHASE ENTIRE CONTENTS

WINTERS ANTIQUES

Weston-super-Mare

For A Prompt And Personal Call
Tel. 01934 620118, 01934 814610

Sell with confidence to us

We are L.A.P.A.D.A. Registered Members
you can rely on us for good advice

MR RICHARD WINTERS

WILL BE PLEASED TO CALL ON YOU



Beck's Advance Tech Salon

Now offering

The latest in Technology IPL

Endermologie and Oxyfusion

Permanent Hair Removal

Acne Treatment

Skin Rejuvenation

Full body Rejuvenation

Non-surgical Bum Lift Tummy Tuck

Cellulite and Fat Removal

**No Needle alternative to Botox, collagen
and Fillers**

Age Spots & Pigmentation Removal

Microdermabrasion - Face Peels

Oxygen Facials

- Excellent and quick treatment results
- Safe & approved

Treatments for Men and Women

For more information call Becky on

01934 629000

15b Waterloo Street, 2nd Floor, Weston-super-Mare
Along from the Boulevard above Stanley's Betting shop



ANIMAL PORTRAITS

in full colour Pastel

by Sheila Excell

I love drawing animals from life - they are nearly always much better models than their owners anticipate!

If drawing from life is not an option then good clear photos are the answer.

I am happy to show samples of my work and the full fee is not expected until the customer is quite satisfied.

Horses, Dogs, Cat and Farm animals - anything with four legs!

Prices from £30 (a small head study)

Framing extra.

Phone 01278 760697

Sheila Excell

Little Acre, Church Rd. East Brent

FRANCE HOLIDAY HOME TO LET IN SUNNY SOUTH VENDEE



www.vendeeholidayhouse.co.uk

A fully furnished three bedroom bungalow situated in **St Denis -du- Payre** on the edge of a "reserve naturelle", home to around 120 species of wild birds each year. Within easy reach of **Lucon** and the beautiful beaches at **La Faute, La Tranche** approx 10 miles away. The lively resorts of **La Rochelle** and **Les Sables d'OLonne** approx 30 miles. The accommodation comprises of: fully equipped kitchen/dining room, living room with log fire, TV (French & English Channels), one double bedroom, one twin bedded room, one bedroom with bunk beds and double sofa bed, bathroom/shower room and separate WC, electric heating, garage and additional private parking. Large fenced garden with patio, garden furniture and barbecue. **8m x 4m pool for 2005.**

For full details prices and availability
please ring or e-mail Ray and Yvonne Hicks.

Telephone: +44 (0)1934 811993; mobile 07775928596;

e-mail Raymond.Hicks@Btinternet.com

Fed up fiddling about with troublesome **home computers**?
Simply want the things to work properly?

PLEASE RING US - WE WILL HELP

HOMELINE technology

Call 0870 240 6062 (Standard national call rate)

Subscription entitles you to:

UNLIMITED telephone support - we solve most computer problems over the phone.

FREE annual maintenance visit.

30% OFF home engineering visits.

FREE advice on equipment - we'll even buy it, deliver and set it up for you.

FREE high-risk virus warnings.



**Don't suffer
violence in silence**

Call

0800-69-49-999

for free confidential support and advice

The Domestic Abuse FreeFone Support Line (Daffs) offers a single point of contact for free and confidential advice and support to any person suffering domestic abuse. Call now, protect yourself and anyone you suspect may be suffering.

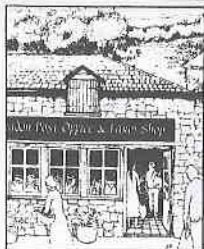
STILLPOINT

Carol Joy DC MMA

Acupressure massage, McTimoney therapy,
Hawaiian bodywork, Life coaching.

Old Oak Farm, Chapel Allerton,
Axbridge, Somerset. BS26 2PD.
tel: 01934 712726
email: info@stillpoint.uk.com

www.stillpoint.uk.com



Bleadon Post Office and Farm Shop

GREAT NEWS - GRAND OPENING!

At long last we hear that the new Post Office and shop will be opening it's doors on Monday 25th April. The celebrations however will begin on Saturday 23rd April when Alistair assures me that there will be much to enjoy in the way of 'food tastings' and 'samplings' of produce.

Come and join in the party - .we've waited a long time for this occasion!

And a lot of effort has gone into making it happen.

More importantly however we must use this new amenity in every which way we can, for without the support of the villagers the business cannot thrive.

AND ——— We must not lose it again!

For those connoisseurs, we shall have more fresh veg, fresh herbs, and, as many have asked, a place to just sit down and relax! We are investigating the idea of a tea/coffee machine and a couple of chairs.

We shall be able to offer local specials, such as a shelf for the brownies to show/sell their home made produce. If you have a surplus of garden produce, we will be happy to sell off any surplus.

Although it is early in the life of this project, we hope that we are able to access foods as you require them- if there is anything which you would like to see, just let us know so that we can look into it.

We hope that we will soon earn the reputation of stocking those rare items, value and quality.

Many thanks, and keep buying locally...

Bleadon Post Office 01934 815584

PHILIP JAY

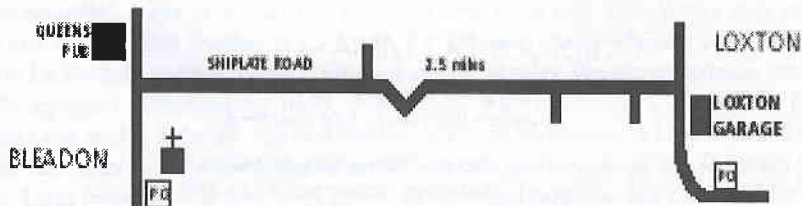
01934 750445 DAY

01934 750439 EVE

LOXTON GARAGE

LOXTON BS26 2XE

philip-jay@loxton-garage.fsnet.co.uk



Motor Vehicle Repairs * Servicing * Cambelts * Welding * Accident Repairs
Electrical * Fault Codes * Breakdown * Diesel & Petrol * FOC Courtesy Cars

THE SOUTH WEST'S NEWEST GARDEN CENTRE

- Excellent range of gardening products
- 100's of varieties of houseplants, trees and shrubs
- Collections of the more unusual products & plants
- Free expert horticultural advice
- Restaurant open all day offering everything from Sunday roasts to high teas
- All year round free gardening events & festivals, ask in-store for details
- East access & free parking for all
- Just off Junction 22 of the M5

OPEN EVERY DAY

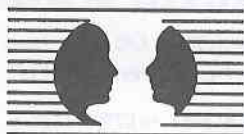
Mon - Sat: 9am - 6pm

Sun: 10am - 4.30pm



**Sanders
gardenworld**

BRISTOL ROAD, BRENT KNOLL, SOMERST TA9 4HJ Tel 01278 761111



Coping with life's problems and making changes can be difficult, but an experienced professionally trained counsellor can help. To arrange a confidential initial consultation telephone:

**"The future doesn't
have to be the same
as the past..."**

Alan Robinson

BACP Registered Practitioner
UKRC Registered Independent Counsellor

01934 744123

(Draycott near Cheddar)

"You don't have to suffer in silence."



**For community news and sport
read it first in the**

Weston & Somerset
Mercury

Weston's paper

**Telephone us on 01934 422500
with all your local news**

**E-mail: Newsdesk@thewestonmercury.co.uk
www.thewestonmercury.co.uk**



**LIZ ALDERSON
GRAPHIC DESIGNER**

Appletree Cottage, Old School Lane,
Bleadon, North Somerset, BS24 0PF.

t 01934 813197 m 07905 223975
e liz.alderson@virgin.net

design for company literature, corporate identity, magazines,
newsletters, exhibitions, web sites, advertising & direct mail.

Zhara Floral Design

Designer : Deb Tierney

Flowers for all occasions

Weddings - Corporate events - Anniversaries
Births - Bereavements
Traditional, Designer and Exotic Flowers
Arrangements / Bouquets / Hand-ties
and much more

'Sunnymead'
Purn Way, Bleadon, Somerset BS24 0QE

FREE LOCAL DELIVERY



zahra
-to bloom

Free personal consultations
Portfolio available
Please call to order
Tel: 07980 567595
01934 811984 (6-8pm)

BRIDGE GARAGE

(Prop: Peter Briffitt)
BLEADON VILLAGE

AT YOUR SERVICE

TELEPHONE: 01934 812206

BLEADON CHURCH - PARISH MAGAZINE

Monthly 30p

News, Views, Reports
Times of and information about
Services and special events.



To get your copy, phone
Pete Williams on 812020
Also obtainable from Bleadon Post Office

STEPHEN & CO.

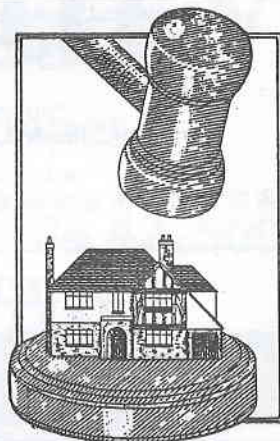
CHARTERED SURVEYORS

01934 - 621101

Professional Advice
on all property matters

Chartered Valuation Surveyors
Auctioneers
Estate agents

(Next to Town Hall)
Weston-super-Mare BS23 1UP
Fax: (01934) 621519
E-mail: stephenandco@easynet.co.uk
www.stephenand.co.uk

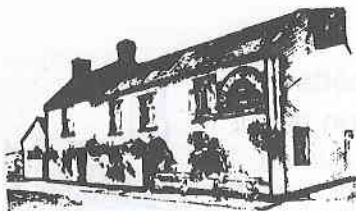


QUEEN'S ARMS

Celtic Way, Bleadon

FREE HOUSE

Dan and Jess welcome you to our traditional village pub with a warm and friendly atmosphere. Relax and enjoy ales direct from the cask and savour our excellent food freshly prepared by our chef.



- CHEFS SPECIAL BOARD
- REGULAR THEME NIGHTS
- GUEST ALES
- SUNDAY NIGHT QUIZ at 8pm
- SKITTLE ALLEY AVAILABLE FOR FUNCTIONS

In the 2004 Good Pub Guide

Tel/Fax 01934 812080 or visit our web site at www.queensarms.co.uk

PLASTECH WINDOWS

**SPECIALISTS IN THE INSTALLATION
OF HIGH QUALITY UPVC**

- ★ doors
- ★ windows
- ★ patio's
- ★ fascias
- ★ cladding
- ★ guttering
- ★ Full range of conservatories

*We offer top quality products
custom made to almost any design*

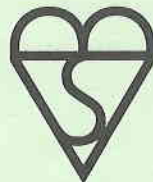


**A member of
the Guild of
Master Craftsmen**

FENSA

Registered Company

**20 YEARS
EXPERIENCE**



**BRITISH STANDARD
BS 5713 GLASS UNITS**

NO ONE CAN BEAT US ON PRICE & QUALITY

For a prompt & personal service phone
Bleadon (01934) 814500
Mobile: 0777 4475736



SOMERSET FASCIAS



U-PVC SPECIALISTS

- FASCIA BOARDS & SOFFITS
- GUTTERS & DOWNPIPES
- CLADDING
- ROOFING

References on request

- Competitive Prices - Quality Workmanship
ALL INSTALLATIONS & MATERIALS FULLY GUARANTEED

Tel: 01934 628793

Mobile: 07710 727595

ROOFCHECK



ROOFING CONTRACTORS
PVC-u REPLACEMENT
SPECIALISTS

TEL: 01934 644430 ANYTIME

33a Swiss Road,

Weston-super-Mare BS23 3AY

Member of the Guild of Builders & Contractors

REFERENCES ON REQUEST

This Newsletter is Edited by **PENNY ROBINSON** of 1, The Veale, Bleadon BS24 ONP

THE COVER DESIGN IS BY JOHN HICKLEY

Published by **BLEADON PARISH COUNCIL**, Bleadon, North Somerset.

Produced & Printed by **GFS Print** Telephone (01934) 622409 · Fax (01934) 612079