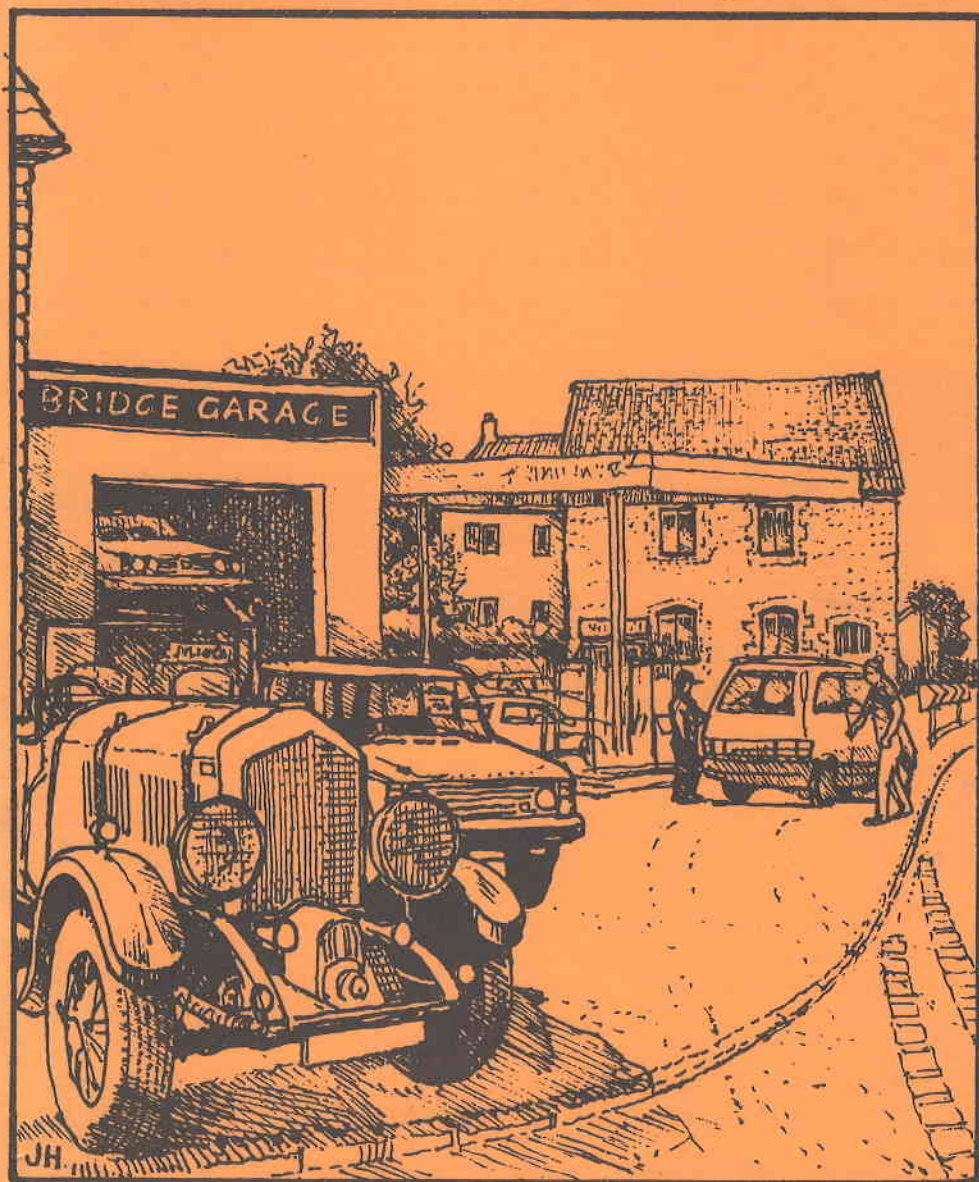


BLEADON



VILLAGE NEWS 62

Bleadon Village Monthly Market

Fresh Produce. Astill's Bread. Cakes. Cheese.
Local Cider. Preserves. Honey. Garden Plants.
Lavender. Crafts. Books. Antiques. Bric-a-Brac.
Refreshments. Gossip & Chat and more...



Saturday 9am - 1pm

Oct 16, Nov 20, Dec 4

Coronation Hall, Bleadon

01934 812370 to book a stall
at this popular monthly market

YOUR PARISH COUNCIL

PENNY SKELLEY [CHAIRMAN] 'MENDIP CROFT', CELTIC WAY, BLEADON. TEL. 815331
PENNY ROBINSON [VICE CHAIRMAN].. I, THE VEALE, SHIPLATE RD. BLEADON. TEL. 814142
RAY HICKS 'FIDDLER'S VIEW', HILLCOTE BLEADON HILL. TEL. 811993
MALCOLM PERRY 'WESTFIELD', I THE BARTON, BLEADON. TEL. 813940
MARY SHEPPARD 'LITTLEWOOD' BRIDGWATER RD., LYMPSHAM. TEL. 812921
KEITH PYKE 8, WHITEGATE CLOSE, BLEADON. TEL. 813127
CLIVE MORRIS 20, BLEADON MILL, BLEADON. TEL. 811591
JUSTIN HARVEY-BENNETT THE BEECHES, CELTIC WAY, BLEADON. TEL. 811373
ROBERT HOUSE LAKE FARM COTTAGES, SHIPLATE ROAD, BLEADON. TEL. 815588

THE PARISH CLERK TO WHOM ALL CORRESPONDENCE SHOULD BE ADDRESSED IS:- BRUCE POOLE, 'THE CHIPPINGS', 21 STONELEIGH CLOSE, BURNHAM-ON-SEA, SOMERSET TA8 3EE

TEL. 01278 787555 or e-mail:bruce.poole2@btopenworld.com

The Council meets on the 2nd Monday of the month at 7.30pm, in the Coronation Hall.

An agenda is published on the Parish notice board, and any member of the public who wishes to, may attend these meetings, and raise any issue of interest at the end of business.

WE AIM TO PUBLISH THIS VILLAGE MAGAZINE FOUR TIMES A YEAR-
MARCH, JUNE, SEPTEMBER AND DECEMBER

HOWEVER WE MUST POINT OUT THAT ANY DATE SENSITIVE MATERIAL SHOULD BE SENT TO THE EDITORS FOR INCLUSION WELL IN ADVANCE AS WE CANNOT GUARANTEE A DEFINITE PUBLICATION DATE.

The deadline for the next issue will be Saturday November 27th 2004

I should like to thank all those of you who help with the distribution of the magazine, and I do hope that I can count on your future support. If there are any others out there who would like to help with deliveries, please let me know. (tel.814142)

Our aim is to provide a copy free to every household in the Village, if you don't get one delivered to your door, there will be some spares available from the new shop.

UNLESS OTHERWISE STATED THE OPINIONS AND COMMENTS EXPRESSED IN THIS NEWSLETTER ARE THOSE OF THE CONTRIBUTOR AND NOT OF THE BLEADON PARISH COUNCIL. ANYONE WHO HAS ANY COMMENT TO MAKE ABOUT THIS PUBLICATION SHOULD CONTACT THE EDITOR - WE AIM TO FOLLOW 'AN EQUAL OPPORTUNITIES' POLICY - SO IF YOU DISAGREE WITH ANY OF THE VIEWS EXPRESSED YOU HAVE THE RIGHT OF REPLY!

RG's

Professional Cleaning Services

We offer the following services to the discerning customer

Carpet, Rug and Upholstery Cleaning
Curtain & Upholstery Dry Cleaning
Hard Floor Cleaning and Sealing
Car & Caravan Valet's
Stain Guard Protection
Total House and Kitchen Cleaning

We don't have any Gizmo's or Gimmicks. We are a family business that prides itself on service. For a no obligation quote or enquiry please call

01278 789840

38 Julians Acres Burnham on Sea TA8 2LX or E-mail Rgarlandging@aol.com



Lymphsham pre school mission statement - To prepare children for school life; academically and socially in an environment that allows children to grow in confidence and ability. Dealing with the whole child and creating a safe and warm atmosphere.



- * Opened in 1992
- * Fully Qualified Staff
- * Close link to Lymphsham C of E VC First School
- * Set in school hall
- * Use of kitchen facilities
- * Attractive outdoor area for children to play and learn
- * Registered for children age 2 1/2 to 5 years
- * Government funded for over 3's
- * Open 9 - 12noon 5 days per week
- * Warm and welcoming environment
- * Holiday club available in school holiday 9am-3pm
- * More children from Bleadon are being educated in Somerset than North Somerset
- * It is on the table for Bleadon to join Somerset catchment

Our Ofsted inspection report of 2004 said "The children are confident to try new experiences showing a positive approach to their learning. They show curiosity and are excellent at exploring the wealth of relevant and stimulating activities that are provided for them."

Please contact us to arrange your free trial morning!

Contact Julie Gibbons supervisor for more details and a prospectus on 07743 188865 or email jgibbons@talkgas.net Alternatively leave a message on 01934 812131.

Manor Hall, Rectory Way, Lymphsham, Somerset, BS24 0EW Registered Charity No. 1024967

CHAIRMAN'S REPORT



A short summer report to update you from the Parish Council. The most important aspect for us all for the future is to define the Bleadon Village Plan, which is an overall picture, perhaps a 'wish list', of how we want the community of Bleadon to evolve. Future generations will be effected by our decisions; let us hope that they will see the merit in our conclusions. As a project, the Parish Council will consider all ideas and issues for this plan, which will, once adopted, provide guidance for our submissions to North Somerset Council. A Public Meeting will be held in the Coronation Hall in October and we hope many villagers will attend to express their views on the draft plan.

On the 'works' front, two of our village main roads have been resurfaced or dressed and the fencing for the play-park renewed. The hub of our village, the Coronation Hall is constantly being refurbished and we look forward to many village activities and events in the autumn. May I also offer my congratulations to the Youth Club, with its new team and increased membership.

The new shop is proving a great success, is well supported by the village and we all eagerly await the Post Office element. You will also have seen that the old Post Box in the centre of the village has been relocated to the pavement only yards from its old site, for which we are grateful.

We were pleased to welcome recently to a Parish Council meeting, the Chair of Somerset Primary Care, who gave us an update on the Patient Advice and Liaison Service. In the autumn, we have the Chairman of TMTV, who represents all local villages for traffic issues. Thanks to good citizens in our community, we now have a volunteer team for the operation of a hand held radar gun, which should prove a deterrent to speeding motorists in the village.

As a final word, many of you will know, and resulting in much fury for me personally, two of the beautiful planted village tubs were recently stolen from Celtic Way - lock, stock and barrel! The Parish Council meets on the second Monday each month, other than August, and your attendance is always most welcome.

Penny Skelley, Chairman, Parish Council

ADVERTISING IN THE VILLAGE NEWS

These are the current advertising tariffs for our Village News Magazine:-

- FULL PAGE = £50
- HALF PAGE = £30
- THIRD of PAGE = £25
- QUARTER PAGE = £20

This is an annual fee and covers the cost of advertising in all of the four issues.

We aim to publish the magazine in June, September December, and March.

For further information contact Penny on 814142.

NB at the moment there is no charge for small personal ads.

HEARING SERVICES

R Gethin RHAD MSHAA

40 Meadow Street, Weston-super-Mare

01934 620376

Home Visiting Service Available



*Registered Member of
The British Chiroprody
Association*

PAULINE M. FRY

MSSCh MBChA

Qualified Chiroprodist

Home Visits Tel: 01934 812094

5 Totterdown Lane

Bleadon

Weston-super-Mare

North Somerset BS24 9LU

e.mail: PaulineMFry@AOL.com

ELECTRICIAN

Steve Insley

WSM 812709 OFFICE
07971 413603 MOBILE



*No Quotation Charge
No Call Out Charge
No Job Too Small
No Obligation - No VAT*

HOUSEHOLD ELECTRICAL INSTALLATION WORK

- Security Lights • Extra Sockets • Shower Units • Telephone Extensions •
- New Fittings • Fuse Boards • Door Bells • Fault Finding ... Etc. Etc. •

THE CHURCH OF ST. PETER & ST. PAUL

We continue to develop our friendship with the clergy and members of the Salvation Army and with St. Andrew's (Methodist and Church of England) Church, Bournville. We go to the Salvation Army in Carlton Street for a joint evening service at 6.00pm on Sunday 12th September and to St. Andrew's with our augmented choir, at 6.00pm on Sunday 24th October.

Other dates:-

Saturday 9th October, 7.30pm. CONCERT IN CHURCH by BRASS ATTACK. A welcome return by this brilliant brass ensemble as part of Weston Arts Festival. Tickets £2.50 from friends of the Church and at the Village shop.

Saturday 23rd October, 7.30pm. CONCERT IN CHURCH by THE AVON AND SOMERSET CONSTABULARY MALE VOICE CHOIR as part of the Weston Arts Festival. Tickets £5.00 from Friends of the Church and at the Village shop.

Sunday 7th November, 6.30pm. EVENSONG OF ALL SOULS

This is an annual commemoration of our loved ones who have died.

Those we know to have died during the past year or so will be remembered by name and you are invited to submit names of others who have died at any time for remembrance by name. Please write to the Rector about this (names in block capitals please).

Saturday 13th November - see separate notice from Sandra Lowton.

Sunday 14th November, REMEMBRANCE SUNDAY. Traditional Act of Remembrance at the War Memorials in the Church. The service takes the form of a Sung Eucharist beginning at 10.15am. Those wishing to lay wreaths should notify the Rector in advance. As usual, the Church will be open at 11.00am on 11th November for those who wish to join the Rector at the memorials.

Sunday 5th December, 6.30pm. ADVENT CAROL SERVICE with our Augmented Choir. Preacher will be the Bishop of Bath and Wells, The Rt. Rev'd. Peter Price.

Sunday 14th December, 3.30pm. CHRISTINGLE SERVICE and teaparty.

The Sampling

A Short story

With a respectful knock the Chief Servitor entered the control area.

'The Voyagers are becoming anxious over the delay Commander' he said uneasily. 'May I make an announcement concerning our departure?'

Voyage Commander Phol frowned. It was true this unscheduled stop in the remote solar system had been unnecessarily long. The reason for the landing, a drive reactor cooling malfunction, had been put right quickly enough but then the problem with the sampler had arisen. The sampler had been deployed in accordance with mandatory instructions concerning descents onto unfamiliar planets. Now, constantly changing form to blend with its surroundings, it was ranging the local terrain taking samples but unable to be recalled; a problem with the communications link apparently. I hope all that rubbish it brings back is useful to someone, Phol thought angrily. Whilst it would not do to voice his misgivings to the crew, he'd been apprehensive about sending out the recovery patrol.

He turned abruptly. 'You can inform all voyagers that passage will be resumed when safe to do so!'

He paused. 'Voyagers of status five and above may be confidentially advised of the sampler problem'. It would do no harm, Phol thought, to let the premium voyagers know the cause of their delay. Sampling was a task for proper scientific resources not an unnecessary burden placed on overworked voyage crews.

The old Morris van rattled and swayed in its rapid progress along the country road. Mr Crabbe had left the motorway fifteen minutes ago to look for fuel, resenting the high prices charged at service areas, and was now lost in the maze of unsigned country byways that fringed the moor. He was also running late for his last appointment of the day and needed to phone ahead; the stupid woman was very likely to contact another dealer if he didn't show up promptly.

Crabbe travelled extensively in the South West buying furniture and antiques from people who, generally not knowing an item's real value, were grateful for a quick cash deal. Using porcelain as plant pots and fine art for firescreens, they deserved the poor deal they invariably got from him. Mugs, was how he described them.

Crabbe also despised hitchhikers. Even the well-dressed ones and those who carried politely worded notices showing their desired destinations drew no sympathetic response from him. He was approaching three now, a professional looking trio, heads down beneath laden packs, plodding along the road's edge.

'Parasites' he muttered, well they wouldn't be taking advantage of him.

As he passed he cut back in sharply and watched in the cracked mirror, hoping he had caused them some inconvenience. The figures did not spare him a glance nor break the rhythm of their steady march.

He instinctively turned right at the next junction and almost immediately saw a garage, a pair of adjacent corrugated iron sheds, sliding doors half open and fronted by two ancient pumps. Crabbe swung onto the pitted forecourt, congratulating himself on his foresight in leaving the motorway, and stopped the engine with a frame-shaking shudder. He got out, shifting his greasy trilby to the back of his head.

'Shop!', he shouted. 'Anyone there?'

The only sound was the chatter of a broken wire lanyard vibrating against an unusually tall metal flagpole. A fitful gust of wind sent a dust devil spiralling across the tarmac toward a small glass-fronted office.

The office looked fairly new as did the attached pole, a wasted investment if ever there was thought Crabbe. A neatly printed card saying 'Back in ten minutes' hung on it but the door opened easily at his touch and he went inside. Among the jumble of paper on the tiny table, Crabbe spotted a telephone and he rubbed his hands in anticipation. A free phone call and, he thought, who knows, the pumps might be unlocked too. Cunningly he took some coins from his pocket and piled them conspicuously on the table edge near the door, a precautionary alibi in case his benefactor showed up.

Behind him as he dialled, the hikers filed in from the road, the late afternoon sun glinting on metal fittings as they purposefully unslung their packs. They gathered in a conversational huddle and one turned to give the figure in the office a calculating stare from pale reptilian eyes.

Throughout the long light period the great vessel had stood exposed and vulnerable. Light-absorbing shields had helped to mask it visually but Phol reasoned that even a technology as basic as that shown by the surroundings must have noticed their incoming passage through the enveloping gassy cloud. He was expecting some approach, hostile or otherwise. It was unthinkable that the sampler be abandoned, he wouldn't care to have the cost charged against his ship and some level of response would have to be made. The whole thing could escalate into a messy squabble with some primitives and, whilst there was no doubt about the outcome, even with the limited weaponry he possessed, it would do his career no good.

'Commander. Contact with the sampler established' the staccato phrases cracked from the console.

'Patrol leader reports a sampling operation just beginning, uncomplicated specimen, short process'. Phol's eyes hooded momentarily, his immediate reaction was to abort the sampling but, so far, all had remained peaceful and the atmospheric sensors told him that soon the darkness would return. Besides, stopping the process now would mean a batch of incomplete data and that would lead to recriminations from the Academicals.

'Allow the sampling to proceed. Inform me immediately on completion'.

Mr Crabbe swore. Three times he'd dialled the woman's number only to be rewarded by a faint sound reminiscent of the seashore, but overlaid with a rattle like that coming from the flagpole. The little room was unventilated and getting as hot as a greenhouse, sweat ran down from beneath his hat to soak his eyebrows and sting his eyes. Wiping them with the back of his hand he noticed a grubby damp palm print on the papers strewn across the table. The paper was blank. He scrambled quickly amongst the remainder, knocking coins to the floor as he did so - all the paper was blank. Apprehension growing he bent to retrieve his money and heard the door lock with a precise click.

He straightened and stepped to the door. His stomach knotted in panic, three figures dressed in loose-fitting overalls and hoods stood outside looking at him through the glass with a detached interest.

'Just trying to use the phone. I want a fill up'. His voice died with a croak.

There was no handle on the inside, only a thin regular line indicated that an opening had ever existed and Crabbe clawed frantically at the frame, searching for some leverage.

'What's the bloody game then?'

The figures remained unmoved, watching and waiting like three malevolent beekeepers.

A man of Mr Crabbe's experience knew when he had been conned and he was sure now that it was a put up job, most likely for some TV programme; the thought made him very angry indeed. His suede shoes made no impression on the walls and door and the table resisted all his efforts to lift it so, in desperation, he attacked the windows using the telephone but it was quickly reduced to fragments against what appeared to be armoured glass. Two of the hooded figures had withdrawn and were circling his van as if looking for a point of entry.

'Bastards!' Crabbe shouted with all the volume he could muster. 'Leave my van alone'.

The third figure continued to watch with interest, as one might the antics of an unusually active beetle in a jam jar. The heat quickly increased and Crabbe felt he was drowning in his own perspiration. Suddenly he knew that they intended to kill him.

'Why?' he sobbed. 'Why me?'

His fists beat despairingly at the windows as with buckling knees he slid to the floor.

The fact that Crabbe died of a heart attack nearly three seconds before the killing gas was introduced was automatically registered and recorded by the intricate circuits of the sampler. Body dimensions, weight and colouring were also noted before a gentle spray of dissolving acids reduced his body to its constituent fluids from which further sample readings were taken. Then, a brief burst of intense heat energy within the killing chamber vaporised the residues and what remained of Mr Crabbe was ejected as a jet of hot gas and quickly lost in the evening air.

'Sampling process complete Commander'. The relief in the voice was evident.

'Recall sampler and patrol', Phol ordered.

'Set drive systems to readiness. Inform voyagers and secure all voyage stations'.

He would be relieved to be away, interstellar overdrive engaged and out again into the safe and familiar vastness of space.

The huge craft left, silently and unobtrusively. With the drive reactors now properly cooled it no longer created the fiery arc through the planet's atmosphere that had signalled its arrival. END

The coming of the A370

Any study of old maps and photographs shows very clearly how much Bleadon has changed in the last century and a half, and in my view the event that made the greatest difference to the village was the construction of the A370 along its present line. This took place over seventy years ago, transforming an extremely serpentine journey into a relatively straightforward one.

Imagine starting at the foot of Bleadon Hill, before 1930, when your route followed the curve of what is now a lay-by, crossing the railway by a bridge slightly to the west of the present one then curving back into what is now the lane leading past Combe Farm and Combe Cottages (where the village pond used to be). Meetings between buses and horse-drawn farm vehicles must have been very interesting occasions!

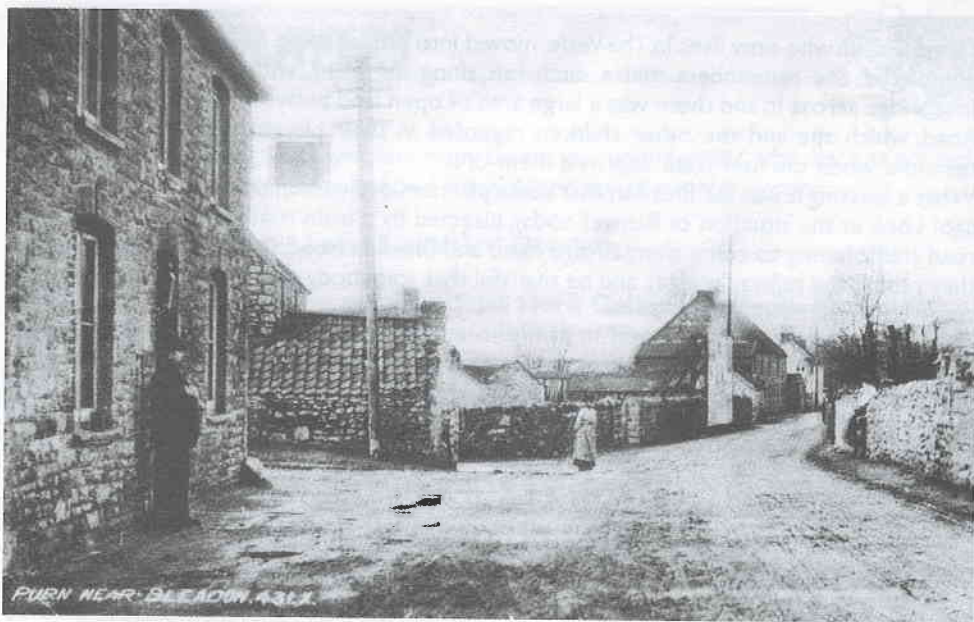
After passing Purn Farm and the Anchor Inn, this narrow lane swung left past Catherines Farm, into the Village centre and along Bridge Road, crossing the Axe by the old bridge at the end of the present parking area. Once over the river, it followed The Crescent (then part of Bleadon) before snaking right to pass Hobbs Boat Inn, and then left along Boat Lane running on to the Lympsham - Eastertown junction, which in those days would you believe, was not a crossroads but a T-junction. This meant that to reach East Brent you turned left and followed the road through Eastertown. There was really no point in hurrying.

Two of our most senior residents witnessed the radical changes that removed most of the village from this tortuous route (and of course from today's heavy traffic). Victor James left school in North Petherton in 1927, coming to live and work in Bleadon. At the time of the road building he was working for Fred Wall at Purn Farm and recalls those times clearly. *"Opposite Purn Farm there is an old quarry where tenants of the Church Commissioners were allowed to take fillings for their farm gateways. That quarry consisted of layers of sand and shingle, with fossils and sea shells, and a layer of clay. Sometimes when we were busy with pick and shovel some of the surface would collapse and you could see the distinct layers. No rock was visible. There was shingle right along to Undercliff House, it being used in road-making!"*

Stand outside urn Farm today and you can still pick out this shingly cliff beneath the vegetation that has overgrown most of it.

A photograph of the area taken in the early 1900s shows a narrow, unsurfaced road level with the doorstep of The Anchor; the present surface is a yard higher. The eastern side of the road was bounded by a fairly low retaining wall in which was set, opposite what is now the Curry Cottage, a well with a windlass. The local newspaper photographed the lady from the Cottage drawing the last bucket of water before the road builders moved in, and the well is now buried beneath the southbound half of the carriageway.

Another photograph, probably taken in the late 1920s, shows the cottages that stood almost opposite The Anchor and were demolished to make way for the much wider road. (At the same time the foot of Purn Hill was cut back some distance; hence the much higher retaining wall now in place). The picture also shows how the old road followed the line of the rhyne as it curved left towards the Village.



FURN NEAR BLEADON, 1811.



At the other end of what amounted to the Bleadon Bypass things were much simpler technically, with no buildings or hillsides to clear away but we have a classic example of the well known public services syndrome in which the left and right hands function in mutual ignorance. To provide homes for some of the heroes of World War I eight Council houses had been built on the land opposite Bridge Garage. (Incidentally, the water supply for these new houses came from a pump between numbers 4 and 5). In no time at all this situation was totally disrupted by a different organisation slapping a king-sized road in front of this rural backwater - which accounts for number 8 having a much longer garden than that of number 1.

Doris Gould, who now lives in The Veale, moved into one of these houses when they were completed. She remembers that a ditch ran along the front, with each house having a footbridge across it, and there was a large area of open land between the ditch and Bridge Road, which she and the other children regarded as their playground. They were most resentful when the new road deprived them of it

What a blessing it was for Bleadon that some planners decided on that road all those years ago! Look at the situation of Banwell today, bisected by a main road. Imagine today's main road traffic having to come along Bridge Road and Bleadon Road, (it was bad enough when they rebuilt the railway bridge), and be thankful that somebody gave Bleadon the breathing space to remain a village.

Les Masters



IF YOU OWN A DOG PLEASE DO NOT ALLOW IT TO FOUL THE FOOTPATHS AND VERGES OF OUR VILLAGE. THE RESULTING MESS IS UNSIGHTLY AND A SOURCE OF INFECTION.

Amusing interlude

A hospital was planning to develop a new wing and the plans were submitted to the team of resident doctors for their opinions. This is what they had to say:-

The anaesthetists thought the whole idea was a gas.
The cardiologists didn't have the heart to say 'no'
The dermatologists didn't want to make any rash moves.
The gastro-enterologists had a bad gut feeling.
The medics thought it a hard pill to swallow'
The neurologists thought the administration had a nerve.
The obstetricians stated they were under a misconception
The ophthalmologists considered it was short-sighted
The orthopaedists issued a joint resolution
The otologists were deaf to the idea
The pathologists said 'over my dead body'.
The psychiatrists thought it was madness.
The radiologists could see right through it.
The urologists felt the scheme wouldn't hold water... and
The surgeons washed their hands of the whole thing!

BLEADON PLAYERS



Our Victorian Evening went well, and many thanks to our audiences, who were as colourful as those on stage, and in equally good voice during the Music Hall section.

Our next production will be on **22nd/23rd October**

We have chosen to perform the farce '**Post Horn Gallop**' by **Derek Benfield**. It is a hilarious play which takes place in the baronial hall of Elwood Castle. The castle has been opened to visitors and a variety of characters pass through the hall despite batty old Lord Elwood's attempts to 'head 'em off at the pass'! Add Ada, a love sick parlour maid, vague and woolly Lady Elwood, a scout master with fifty scouts, two failed bank robbers who are after the hero of the play Chester Dreadnought, Chester's wife Patricia (Lord Elwood's daughter and the only sane character), Bert and Maggie two bewildered paying guests and Miss Partridge the official tour guide ... and you have a recipe for utter chaos!

Tickets available in advance from the Farm Shop or at the door on the night
£5 adult .. £1 child.

WATERHOUSE ELECTRICAL & ENGINEERING SERVICES

Commercial • Domestic • Industrial Installations

Now incorporating a Plumbing & Heating Division

1 Lakeside Barns, Shiplate Road, Bleadon, Weston-super-Mare BS24 0NY.

Corgi Registered
198748

Tel 01934 813803
Mobile 07860 597463

National Inspection Council for
Electrical Installation Contracting

NICEIC
APPROVED CONTRACTORS

CHATTERLEY PLUMBING & HEATING

All types of plumbing work undertaken

- Servicing of boilers and fires
- Taps and washing machines
 - Central heating
- Bathroom installation

Free Estimates given

No call out fee

24 hour Service

Tel: 01934 812629

Mobile: 07887 768877



MARK HOWE GARDENING SERVICE

**TREE & SHRUB
CUTTINGS
SHREDDED FROM
£25**

OFFERS

REGULAR GRASS CUTTING
HEDGES & TREES CUT
SHRUBS PRUNED
FENCE ERECTING/REPAIR
FENCE PAINTING
TURFING
PATIOS & CHIPPINGS LAID

PATIOS & PATHS PRESSURE

WASHED FROM £20

ALL TREE WORK UNDERTAKEN

HEDGES & SHRUBS TRIMMED

Phone: 01934 413594

or

07773 272003

Connoisseur CHOICE

1st Class Catering!

BUFFETS OR FULL SERVICE

MENUS FOR ALL OCCASIONS

PRICES FROM £3.00 PER PERSON

CATERING FOR ALL SIZE PARTIES!

DELIVERED ANY PLACE, ANYTIME
FREE OF ANY EXTRA CHARGE

FULL WAITRESS SERVICE SUPPLIED

COMPREHENSIVE RANGE OF
SIT DOWN MENUS AVAILABLE

VERY COMPETITIVE PRICES YOU
CHOOSE THE MENU
AND THE VENUE - WE DO THE REST

PURN HOUSE FARM, BLEADON BS24 0QE. TEL 01934 814899

HELPLINES

Advice and Counselling on Alcohol and Drugs:

55a Oxford Street, W-s-M (01934)415376.

Age Concern: 23 Boulevard, W-s-M - (01934) 629192.

Alzheimer's Disease Society: (01934) 514977.

Arthritis Care: (01934) 622808.

Young People With Arthritis: (01934)525037.

Axe District Scouts: Mrs Ann Coombes - (01934) 513699.

Business Link West: (0345) 678100.

Cancer Information Service: (0207) 608 1661 or (01 934) 510230 and (0468) 525525.

Cancer Information and Support Centre: (0117)928 3369.

Carers Centre: 1 Graham Road, W-s-M (01934) 644223. Information and advice for people caring for elderly and disabled relatives at home.

Childline: Freephone (0800) 1111.

Citizens Advice Bureau: Roselawn, Walliscote Grove Road, W-s-M (01934) 621908.

CLIC W-s-M: (01934) 812859.

Community Health Council (Bristol & District): Manulife House, 10 Marlborough Street, Bristol BS1 3NU. Also at Crossroads, Graham Road, W-s-M on Fridays from 9.30am-12.30pm. Ring (0117) 987 3800 out of hours.

Council for Voluntary Services: (01934) 631169.

CRUSE (bereavement help): (01934)628233.

Disability Information Service North Somerset: 3 Manor Court, Locking, W-s-M (01934) 820104.

Disabled Sociability Network: (01934)623752.

Dementia Care Trust: (01934) 522300.

Friends Across North Somerset: The Potteries Community Centre, Langford Road, W-s-M, BS23 3PQ. (01934) 613238. F.A.N.S@ecosse.net

FRIEND (mental health centre): (01934)622292.

Heart, Chest and Stroke Social Club: (01934) 412391.

HIV, AIDS and Sexual Health: (0117) 955 1000.

Horizon Club for the Hard of Hearing: (01934) 629412.

James Macdonald Cancer Trust: (01 934) 510230 or (0468) 525525.

Leukaemia Care Society: (01761) 453703.

Multiple Sclerosis Society (North Somerset and West Mendip Branch): Local information/helpline (01 934) 814499. National helpline: 0808 800 8000.

Myasthenia Gravis Association: (01934) 413371.

North Somerset Gateopener Family Advice and Advocacy Service: (01934) 644452 or 513726.

NSPCC: (0117) 966 4283.

Osteoporosis Group: (01934) 415096 or (01934) 844138.

Rape Helpline: (0117) 935 1707.

Red Cross: (01934) 622844.

RELATE: (marriage guidance) (01934) 627206.

R.S.P.C.A. 172 Locking Road, W-s-M (01934) 627000 or (08705)555999.

St John Ambulance: (01934)629905.

Samaritans: 137 High Street, W-s-M (01934) 632555. SSAFA

Forces Help: (01934) 644024 (11 am-12noon Wednesdays).

Sunshine Radio: Weston General Hospital - (01934) 619252.

Voluntary Agency: (01934) 410190.

Weston and District Muscular Dystrophy Support Group: (01934)419853.

Weston and District Victim Support: (01934) 638179.

WRVS: (0117) 907 7700.

Woodspring Talking News: (01934)622054.

EMERGENCIES In an emergency, dial 999 for police, fire & ambulance

Electricity: (0345) 651651.

Bristol Water: (0845) 702 3797.

Gas: (0800) 111 999.

Police: North Somerset area - (01934) 635252; Sedgemoor area - (01823) 337911.

Ambulance, Fire, Police, Coastguard: Emergencies: 999.

CHEMISTS

A dispensing service is provided by chemists in Weston after closing hours at the following times:

Monday to Wednesday and Saturday - 5.30pm-8.45pm,

Thursday and Friday to 9.45pm, Sunday 3.45pm

TESCO STORES LTD, Station Road, W-s-M

SAFeway STORES LTD, Somerset Way.

R. H. LTD, MENDIP PHARMACY 331 Locking Road.

Sundays and Bank Holidays 12.00noon - 1.00pm, 6.00pm-8.00pm:

R. H. LTD, MENDIP PHARMACY 331 Locking Road.

For details, including telephone numbers, of pharmacies in your area that are open after 5.30pm on weekdays and open on Sundays, please call NHS Direct on 0845 4647.

LOCAL AUTHORITIES

North Somerset Council: (01934) 888888.

Sedgemoor District Council: (01 278) 435435.

Somerset County Council: (01823) 333451.

HOSPITAL

Weston General Hospital: Switchboard - (01934) 636363.

CORONATION HALL MANAGEMENT COMMITTEE REPORT



During the last few weeks extensive work has been taking place in the main hall. This has entailed the removal of the large area of the quarry tiled floor that must have been down for many years, together with the marbled floor that was the old entrance before the building of the existing foyer and toilets.

Pine timber flooring has now replaced this 'eye-sore'- and now with the old surface extensively sanded, and sealed with three coats of varnish, the whole floor looks really good.

Our major concern now is still that many hall users drag tables and chairs across the floor, even although there is an easily handled trolley that can take five stacked chairs without effort. Everyone's future cooperation in this respect will be much appreciated.

A new sink unit and cupboard, has been installed in the main kitchen, together with a plumbed-in beverage dispenser doing away with the need to fill and empty the old urn. When switched on, freshly boiled water makes hot drinks instantly. Of course, it may be more convenient for some people to use the large electric kettle as and when required, and these will still be available.

Funds raised by our monthly markets help to contribute to our ongoing Hall improvements, and thanks go to the small band of hardworking dedicated helpers who make this possible.

Len Chamberlain (Chairman)

Bleadon Folk Dance Club



Do you know John Tomlinson?
John has been our caller at the Club
for over 22 years,
devoting time to set dances to tapes
for our club evenings.

We need more dancers and non-dancers,
so if you enjoy a barn dance then come
along to the Coronation Hall at 8pm
on the 1st and 3rd Thursdays of the month,
just £1 for an evening ... well worth it!

Refreshments are available.

Phone Jean 01934 814007

BLEADON LADIES CLUB



I feel that I must begin this report with a note about our annual outing, which took place in August. This year we enjoyed a coach trip to Totnes followed by a boat along the river to Dartmouth. We were fortunate to have exceptionally good weather for this event and both members and friends enjoyed a pleasant day. Our thanks go to June Cottrell for organising the day. 'Well done June!'

Although it is only just the end of summer and it seems too early to think of Christmas, I would like to inform members that we will be returning to Batch Hotel again this year for our lunch and celebrations, however before this we have several other events to look forward to. The program is as follows

October 12th

Overseas Nursing, a talk by The Director of Nursing, Miss B Cheek.

November 9th

Naval Enigma Code Breaking, a talk by Mrs. Pat Dain.

So as the autumn approaches and the garden beckons less why not spend two hours a month with us at the ladies club for a get together in a friendly environment and hear some interesting speakers. We meet in Coronation Hall on the second Tuesday of the month at 2.30pm. Do come and join us.

For more information call **Barbara Pugh on 01934 814 362**

2000 years of Weston-super-Mare in an Evening with John Crockford-Hawley

13th November - 7pm for 7.30pm. In the Coronation Hall.

Price to be decided but will be fantastic value!

Write this date in your diary now as it promises to be a fun-packed evening arranged by the Friends of Bleadon Church. The evening kicks off with a welcome drink and nibbles, followed by sumptuous food including wine, main course, desserts and cheese and biscuits, all rounded off with coffee. John will be entertaining us with his very alternative view of local history as the evening progresses. Tickets will have to be limited so make sure you get yours in good time.

Sandra Lowton

BLEADON SHORT MAT BOWLING CLUB

The club will be opening its 16th season on Friday 24th September 2004, when we hope to see all our members after our four month summer break. We shall be holding our Annual General Meeting (followed by bowling) on **Friday 1st October 2004**.

Although the work has taken a long time, at the time of writing, we have almost completed the necessary storage arrangements for us to move into the Jubilee Hall. Please note that we shall open the new season in the Jubilee Room and continue thereafter. It should be interesting finding out just how flat and level this floor is after its resurfacing.

We will have some vacancies for new members this year. If you are interested, the club has everything you may need in order to try short mat bowling, including a full range of bowl sizes. All you are required to supply are suitable shoes, which must be completely flat-bottomed without heels or any tread pattern. You could start with flat bottomed slippers and if you like the game, graduate to proper bowling shoes at a later date. Our bowling season always starts at the end of September and finishes at the end of the following May each year. We meet three times a week, on Sunday afternoons, Friday evenings and Tuesday afternoons. If you would like to explore the potential pleasure of bowling please feel free to come along on any of our playing days (please see the times below). Apart from short mat bowling, we are a very sociable club and do indulge ourselves as a club, in various other social activities, particularly during our non-bowling season in the summer months.

This year we arranged for our usual five day Spring bowling holiday to be spent at the Palm Court Hotel in Ilfracombe. The hotel's short mat facilities were good and on the whole our members enjoyed their stay. We look forward to hearing members suggestions, at the forthcoming AGM for next year's Spring break

This year -we once again returned to the Red Cow in Brent Knoll for an evening of skittles. 42 members and friends attended and all enjoyed the skittles and the usual excellent buffet supper served by the Red Cow.

We provisionally plan to hold our annual buffet supper, on **Friday 8th January 2005**. Please make a note of this date in your diaries.

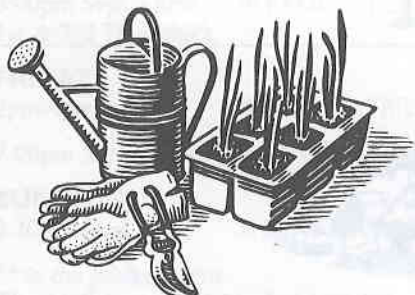
For anyone wishing to join us (and for the few of us who never quite seem to remember) our meeting times are as follows:-

Sundays	2.30pm (League games will be confined to one mat only, so that Social bowling will be unaffected)
Tuesdays	2.30pm
Fridays	7.00pm

If anyone requires further information please contact any of the following or just turn up at any one of our meeting times in the Coronation Hall.

Ring John or Doreen Ward Tel:812136

BLEADON HORTICULTURAL SOCIETY



The trip to Otter Nurseries and Forde Abbey was enjoyed by all who took part in spite of a few drops of 'Adam's Ale' from the clouds above us!

We look forward to a successful Summer Flower Show and then the Autumn programme of events.

Tuesday October 19th

'Success and failure with Alpines' .. an illustrated talk by Richard Horswood.

Tuesday November 16th

We welcome the return of Paul Gilmore from Sander's Garden World, when he will be presenting 'Christmas Decorations part 2'. This is definitely one not to miss as Paul's sense of humour is as good as his demonstration.

Tuesday December 21st

The Beetle Drive and American-style supper is good fun and a fitting lead-up to Christmas.

All of our evening meetings are held in the Coronation Hall at 7.30pm and they are open to everyone who would like to come. All we ask for is £1 on the door, we usually have a very good raffle and everyone enjoys the relaxed and friendly atmosphere.

Chris Cudlipp

Tiny Toes

day nursery and baby unit

New and fully equipped

DAY NURSERY

Located in Uphill

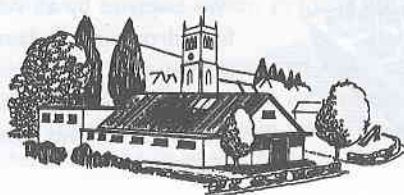


Offering a friendly, loving, safe & spacious learning environment for your child
For more information, our prospectus or to arrange a visit, call us

(01934) 412779

The Old Barn, Uphill Road South, Uphill

A LIST OF ORGANISATIONS WHICH REGULARLY USE THE CORONATION HALL



MONDAYS

2pm-5pm

BLEADON BRIDGE CLUB

7-9pm

EXERCISE CLASS**

7:30pm

1st Monday

BRITISH SUGARCRAFT GUILD
W-S-M BRANCH

7:30pm

2nd Monday

BLEADON PARISH COUNCIL

TUESDAYS

2pm-4pm

2nd Tuesday

BLEADON LADIES GROUP

2.30pm-4.30pm

BLEADON SHORT MAT BOWLING CLUB**

6pm-7:30pm

BROWNIES**

6pm-7pm

BLEADON WEIGHT WATCHERS CLUB Mrs D Neale 416803

7:30pm Sept - May

1st, 2nd, 4th & 5th

BLEADON PHOTOGRAPHIC GROUP Mr K Tapley 623877

7:30pm

3rd Tuesday Oct-May

BLEADON HORTICULTURAL SOCIETY Mr C Cudlipp 813152

WEDNESDAYS

10am-12 noon

2nd & 4th Wed

INFANT WELFARE CLINIC &
TODDLER GROUP

10am-12 noon

1st & 3rd & 5th

TODDLER GROUP

1.30

Yoga Class**

7:30pm

BLEADON PLAYERS/REHEARSALS

CONTACT

Mr D Munden 812772

Mrs Marie Keele
07939 038071

Mrs Pat Bissell
01278 785282

Mr Bruce Poole, Clerk
01278 787555

Mrs B Pugh 814362

Mr J Ward 812136

Mrs B Ware 811545

Mr K Tapley 623877

The Health Visitor
at the Clinic

Mrs Elise Knight
625089

Mrs Denise Marsh
750438

Mrs Sandy Gibbon
645135

THURSDAYS

10am-12 noon	ART: WATERCOLOUR PAINTING	Weston College 01275 810659
8:00pm Sept - June 1st & 3rd Thursday's	BLEADON FOLK DANCING GROUP	Mrs J Thorne 814007

FRIDAYS

2pm-4pm	BLEADON FRIENDSHIP CLUB	Mrs J Diment 812217
7:00pm Sept - May	SHORT MAT BOWLING CLUB**	Mr J Ward 812136

SUNDAYS

2.30pm Sept - May	SHORT MAT BOWLING CLUB**	Mr J Ward 812136
-------------------	--------------------------	------------------

** in the Jubilee Room

The Halls are available for hire by any private individual or organisation. **There is a reduced rate for Bleadon villagers.**

ENQUIRIES to Mrs J Jones: 812370

WHAT'S ON - IN THE CORONATION HALLS -

MAKE A NOTE IN YOUR DIARY NOW!

Date	Time:	Event:	Contact:
11th October	7.30 pm	Parish Council Meeting	
16th October	9-1 pm	VILLAGE MARKET	Hall Management 812370
22nd	7.30 pm	"Post Horn Gallop" a farce by Derek Benfield	Bleadon Players 645135
& 23rd October			
28th October	7.30 pm	Coronation Quiz	Hall Management 811976
6th November	10.30 am	Coffee Morning	Friendship Club 812217
8th November	7.30 pm	Parish Council Meeting	
13th November	7.30 pm	Social Evening	Friends of Bleadon Church
20th November	9-1 pm	VILLAGE MARKET	Hall Management
25th November	7.30 pm	Coronation Quiz	Hall Management
27th November	7.30 pm	QUIZ in aid of CLIC	Pat Dain
4th December	9-1 pm	**BLEADON VILLAGE CHRISTMAS MARKET** lots of festive stalls, gifts galore, bumper raffle, Father Christmas, coffee, mince pies and much, much more!	
12th December		Christingle Party	Friends of Bleadon Church
13th December	7.30 pm	Parish Council Meeting	
20/21/22 January	7.30 & 2.30 pm	PANTOMIME!!	Bleadon Players

From the District Councillors

Such are the quality and number of contributions to the Bleadon Village News that we District Councillors are finding it increasingly difficult to compete ! .

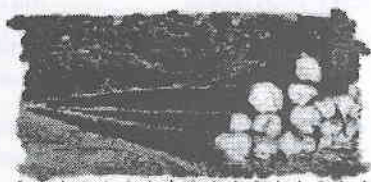
At North Somerset we are beginning to get heavily involved in the next budget round, looking for ways to improve services without increasing the Council Tax. It isn't easy, especially as the local priorities like road repairs, planning and enforcement and environmental issues get just a fraction of the money compared with Education and Social Services.

Just why we need some of the mollycoddling that the government increasingly insists on is beyond us, representing a generation who largely had to stand on our own two feet, didn't buy on credit and didn't expect or get any favours (Eh..I remember when we lived int' box ...and all that!!) .The cost of providing these extra staff and services, and the penalties imposed by the present government if we don't toe the line is a real problem. It means that many of the budget decisions are beyond our local control.....i.e. the famous "stealth taxes ", and leaves little room to manoeuvre. However we both have a desire to keep the Council Tax low and will battle on.

Well...no point rambling on when we've nothing else relevant to say...as usual your efficient parish council and it's committees have most things well in hand..and we are often just the backstop.Nevertheless we remain on hand to tackle any North Somerset problems you may have .Just write or call us.

Elfan Ap Rees and Ian Peddlesden
Tel: 824758 Tel: 812015

GOOD QUALITY SEASONED HARDWOOD LOGS FOR SALE



**GOOD VALUE
PROMPT DELIVERY
SMALL AND LARGE LOADS
AVAILABLE
TEL.- 01934 751378
MOBILE.- 07762 901916**

CONTACT ADDRESSES

EDITOR.....penny.rob@btopenworld.com
PARISH COUNCILwww.bleadonparishcouncil.gov.uk
CHURCHwww.bleadonchurch.info
BLEADONwww.bleadon.org.uk

ROYAL BRITISH LEGION

This year has seen the celebrations for the 60th anniversary of the D-Day landings..

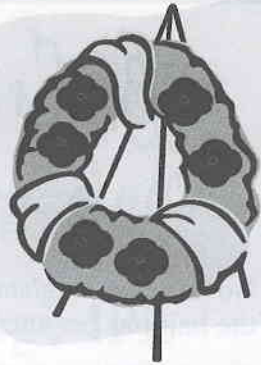
Our TVs were full of those poignant scenes from Juno, Omaha, Utah, Sword and Gold beaches as the old soldiers, many survivors of those landings, gathered to remember their comrades who were lost on 6th June 1944.

In so many conflicts world-wide since then, combatants have returned home injured, both physically and mentally and have been unable or found it difficult to work to support their families. For all these the Royal British Legion is there, - always ready to come to their aid in times of difficulty.

The annual 'Poppy Appeal' starts at the end of October and for the two weeks leading up to Remembrance Day, someone will be calling to ask you to support this worthy cause.

It would nice to think that we could collect more than last year's record total of £711.54p. so please remember those who made the ultimate sacrifice, dig deep and

'WEAR YOUR POPPY WITH PRIDE!'



BLACKBERRY PICKING ON 2ND SEPTEMBER

Have you ever been in a place and wondered about those who have stood on that exact same spot before you? ... looked at the same view?... enjoyed the same scent of wild flowers? ... heard the same birdsongs? ... twenty years, forty years, sixty years even perhaps a hundred or more years ago? Some places will have changed significantly, others hardly at all except in the small detail of landscape, for instance.

As I was out walking this September morning, I couldn't help wondering if 90 years ago someone had looked out over Bridgwater Bay, and thought about a loved one who had recently gone off to fight in France ... to a war that wouldn't last long! - and - if some 25 years later had another someone been there, just as I was, picking a few blackberries and enjoying the warm autumn sunshine, perhaps not realising that on the next day theirs and thousands of other lives would be changed forever.

And what of the future?.. who will stand there in another fifty years say? ..and what will their view of the world be? I like to think that Hellenge Hill will be the same as ever and generations to come will be able to enjoy what we today enjoy, the views, the birds and flowers and the blackberries of course! -. after all places like that stay the same - only people and time move on.

Beck's Advance Tech Salon

Hair Removal

No more waxing/shaving, no more stubble or unsightly hair. When the hair has been removed the hair follicle reduces in size and skin becomes soft and smooth.

Full details and prices available on request.

For maximum results it is recommended that a course of 6 treatments is carried out. There is a discount of 20% for a prepaid course of six treatments with the added assurance that should any further treatments be necessary to that area, then they will only be charged at half the single treatment price. Most areas considered.

Initial Consultation & Patch Test all areas (one off payment) £29

Call Becky on **01934 629000**

WANTED

China Glass, Bric a Brac
Old Hallmarked Silver
Old Jewellery
Silver Plate and Cutlery
Tea & Dinner Sets
Medals, Swords etc.
Old Diamond Jewellery
Grandfather Clocks
Oil Paintings (any condition)
Old Picture Frames
Water Colours
Walking Sticks, Stick Stands
Blue & White Pottery
Silver Photo Frames
Royal Doulton, Worcester
Clarice Cliff Pottery
Ruskin, Moorcroft
Leather Bound Books

OLD

Antique Furniture
1920's and 1930's Furniture
Inlaid Furniture
Hallstands, Sideboards
9 Drawer Desks
Chests of Drawers
Display Cabinets
Bookcases, Bureaux
Round Tables
Sets of Chairs
Wall and Mantle Clocks
Barometers
Carriage Clocks
Barley Sugar Furniture
Wind up Gramophones
Musical Boxes
Sculpture, Bronzes
Extending Tables

WE WILL ALSO PURCHASE ENTIRE CONTENTS

WINTERS ANTIQUES

Weston-super-Mare

For A Prompt And Personal Call
Tel. 01934 620118, 01934 814610

Sell with confidence to us
We are L.A.P.A.D.A. Registered Members
you can rely on us for good advice

MR RICHARD WINTERS

WILL BE PLEASED TO CALL ON YOU



Beck's Advance Tech Salon

Now offering

The latest in Technology IPL

Hair Removal

Acne Treatment

Skin Rejuvenation

Capillary Vascular Treatments

Age Spots & Pigmentation Removal

- Excellent and quick treatment results
- Safe & approved

Treatments for Men and Women

Excellent Christmas Present - Gift Vouchers available

We will be opening Soon!

So book your appointment now for your initial
Consultation & Patch Test

For more information call Becky on

01934 629000

**15b Waterloo Street, 2nd Floor, Weston-super-Mare
Along from the Boulevard above Stanley's Betting shop**



ANIMAL PORTRAITS

in full colour Pastel

by Sheila Excell

I love drawing animals from life - they are nearly always much better models than their owners anticipate!

If drawing from life is not an option then good clear photos are the answer.

I am happy to show samples of my work and the full fee is not expected until the customer is quite satisfied.

Horses, Dogs, Cat and Farm animals - anything with four legs!

Prices from £30 (a small head study)
Framing extra.

Phone 01278 760697

Sheila Excell
Little Acre, Church Rd. East Brent

HOUSE TO LET IN SUNNY SOUTH VENDEE



A fully furnished three bedroom bungalow situated in **St Denis -du- Payre** on the edge of a "reserve naturelle", home to around 120 species of wild birds each year. The accommodation comprises of: fully equipped kitchen/dining room, living room with log fire, TV (French & English Channels), one double bedroom, one twin bedded room, one bedroom with bunk beds and double sofa bed, bathroom/shower room and separate WC, electric heating, garage and additional private parking. Large fenced garden with patio, garden furniture and barbecue. **8m x 4m pool for 2005**. Within easy reach of beautiful beaches at La Faute, La Tranche approx 10 miles away. The lively resorts of La Rochelle and Les Sables d'Olonne approx 30 miles.

**For full details prices and availability
please ring or e-mail Ray and Yvonne Hicks.**

**Telephone: +44 (0)1934 811993; mobile 07775928596;
e-mail Raymond.Hicks@Btinternet.com**

Fed up fiddling about with troublesome **home computers**?
Simply want the things to work properly?

PLEASE RING US - WE WILL HELP

HOMELINE technology

Call **0870 240 6062** (Standard national call rate)

Subscription entitles you to:

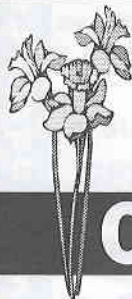
UNLIMITED telephone support - we solve most computer problems over the phone.

FREE annual maintenance visit.

30% OFF home engineering visits.

FREE advice on equipment - we'll even buy it, deliver and set it up for you.

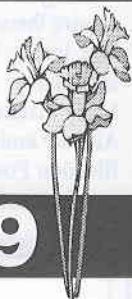
FREE high-risk virus warnings.



**Don't suffer
violence in silence**

Call

0800-69-49-999



for free confidential support and advice

The Domestic Abuse FreeFone Support Line (Daffs) offers a single point of contact for free and confidential advice and support to any person suffering domestic abuse. Call now, protect yourself and anyone you suspect may be suffering.

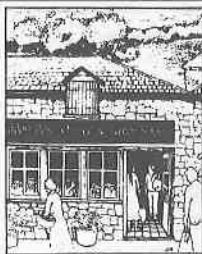
STILLPOINT

Carol Joy DC MMA

Acupressure massage, McTimoney therapy,
Hawaiian bodywork, Life coaching.

Old Oak Farm, Chapel Allerton,
Axbridge, Somerset. BS26 2PD.
tel: 01934 712726
email: info@stillpoint.uk.com

www.stillpoint.uk.com



Bleadon Post Office and Farm Shop

Now that the shop is open we have the chance to speak to you in person, but there are many things still in the pipeline, such as a wider range of fruit and vegetables, a supply of high quality ice cream, local strawberries and clotted cream of course.

And coming soon.... we are applying for an off-licence for wines and beers, which we shall be able to offer within a few weeks if all goes well.

The Post Office paperwork is progressing well, but is sure to be another couple of months, but in the overall scheme of things, I suppose a few more weeks is worth the wait(?).

For those connoisseurs, once the Farm Shop section is open, we shall have more fresh veg, fresh herbs, and, as many have asked, a place to just sit down and relax! We are investigating the idea of a tea/coffee machine and a couple of chairs.

We shall be able to offer local specials, such as a shelf for the brownies to show/sell their home made produce. If you have a surplus of garden produce, we will be happy to sell off any surplus. Although it is early in the life of this project, we hope that we are able to access foods as you require them- if there is anything which you would like to see, just let us know so that we can look into it. We hope that we will soon earn the reputation of stocking those rare items, value and quality.

Many thanks, and keep buying locally...

Alistair and Co.

Bleadon Post Office 01934 815584

PHILIP JAY

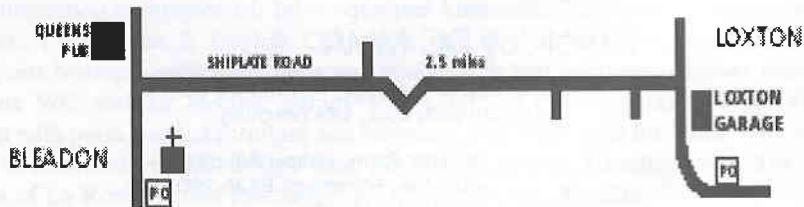
01934 750445 DAY

01934 750439 EVE

LOXTON GARAGE

LOXTON BS26 2XE

philip-jay@loxtton-garage.fsnet.co.uk



Motor Vehicle Repairs • Servicing • Cambelts • Welding • Accident Repairs
Electrical • Fault Codes • Breakdown • Diesel & Petrol • FOC Courtesy Cars

THE SOUTH WEST'S NEWEST GARDEN CENTRE

- Excellent range of gardening products
- 100's of varieties of houseplants, trees and shrubs
- Collections of the more unusual products & plants
- Free expert horticultural advice
- Restaurant open all day offering everything from Sunday roasts to high teas
- All year round free gardening events & festivals, ask in-store for details
- East access & free parking for all
- Just off Junction 22 of the M5

OPEN EVERY DAY

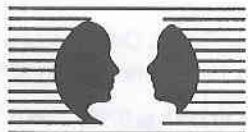
Mon - Sat: 9am - 6pm

Sun: 10am - 4.30pm



Sanders
gardenworld

BRISTOL ROAD, BRENT KNOLL, SOMERST TA9 4HJ. Tel 01278 76111



Coping with life's problems and making changes can be difficult, but an experienced professionally trained counsellor can help. To arrange a confidential initial consultation telephone:

*"The future doesn't
have to be the same
as the past..."*

Alan Robinson

BACP Registered Practitioner
UKRC Registered Independent Counsellor

01934 744123

(Draycott near Cheddar)

"You don't have to suffer in silence."



For community news and sport
read it first in the

Weston & Somerset
Mercury

Weston's paper

Telephone us on **01934 422500**
with all your local news

E-mail: Newsdesk@thewestonmercury.co.uk
www.thewestonmercury.co.uk



LIZ ALDERSON
GRAPHIC DESIGNER

Appletree Cottage, Old School Lane,
Bleadon, North Somerset, BS24 0PF

t 01934 813197 m 07905 223975
e liz.alderson@virgin.net

design for company literature, corporate identity, magazines,
newsletters, exhibitions, web sites, advertising & direct mail.



MENDIP VALE LANDSCAPES

Established 1988

Fencing
Garden Design
Hard Landscaping
Fully Qualified Tree Surgeon
☎ Jon Kingcott 01934 814665

Tree Care
Tree Removal
Site Clearance
Mobile 07767 250215

BRIDGE GARAGE

(Prop: Peter Briffitt)
BLEADON VILLAGE

AT YOUR SERVICE

TELEPHONE: 01934 812206

BLEADON CHURCH - PARISH MAGAZINE

Monthly 30p

News, Views, Reports
Times of and information about
Services and special events.



*To get your copy, phone
Pete Williams on 812020*

Also obtainable from Bleadon Post Office

STEPHEN & CO.

CHARTERED SURVEYORS

01934 - 621101

Professional Advice
on all property matters

Chartered Valuation Surveyors
Auctioneers
Estate agents

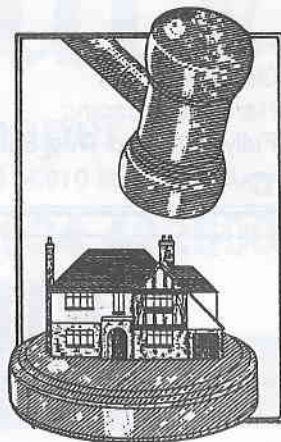
(Next to Town Hall)

Weston-super-Mare BS23 1UP

Fax: (01934) 621519

E-mail: stephenandco@easynet.co.uk

www.stephenand.co.uk



QUEEN'S ARMS

Celtic Way, Bleadon

FREE HOUSE

Dan and Jess welcome you to our traditional village pub with a warm and friendly atmosphere. Relax and enjoy ales direct from the cask and savour our excellent food freshly prepared by our chef.



- CHEFS SPECIAL BOARD
- REGULAR THEME NIGHTS
- GUEST ALES
- SUNDAY NIGHT QUIZ at 8pm
- SKITTLE ALLEY AVAILABLE FOR FUNCTIONS

In the 2004 Good Pub Guide

Tel/Fax 01934 812080 or visit our web site at www.queensarms.co.uk

PLASTECH WINDOWS

**SPECIALISTS IN THE INSTALLATION
OF HIGH QUALITY UPVC**

- ★ doors
- ★ windows
- ★ patio's
- ★ fascias
- ★ cladding
- ★ guttering
- ★ Full range of conservatories

*We offer top quality products
custom made to almost any design*



A member of
the Guild of
Master Craftsmen

FENSA

Registered Company

**20 YEARS
EXPERIENCE**



BRITISH STANDARD
BS 5713 GLASS UNITS

NO ONE CAN BEAT US ON PRICE & QUALITY

For a prompt & personal service phone
Bleadon (01934) 814500
Mobile: 0777 4475736



SOMERSET FASCIAS

U-PVC SPECIALISTS

- FASCIA BOARDS & SOFFITS
- GUTTERS & DOWNPIPES
- CLADDING
- ROOFING

References on request

- Competitive Prices - Quality Workmanship

ALL INSTALLATIONS & MATERIALS FULLY GUARANTEED

Tel: 01934 628793

Mobile: 07710 727595

ROOFCHECK



ROOFING CONTRACTORS

PVC-u REPLACEMENT

SPECIALISTS

TEL: 01934 644430 ANYTIME

33a Swiss Road,

Weston-super-Mare BS23 3AY

Member of the Guild of Builders & Contractors

REFERENCES ON REQUEST

This Newsletter is Edited by PENNY ROBINSON of 1, The Veale, Bleadon BS24 0NP

THE COVER DESIGN IS BY JOHN HICKLEY

Published by BLEADON PARISH COUNCIL, Bleadon, North Somerset.

Produced & Printed by **GFS Print** Telephone (01934) 622409 · Fax (01934) 612079