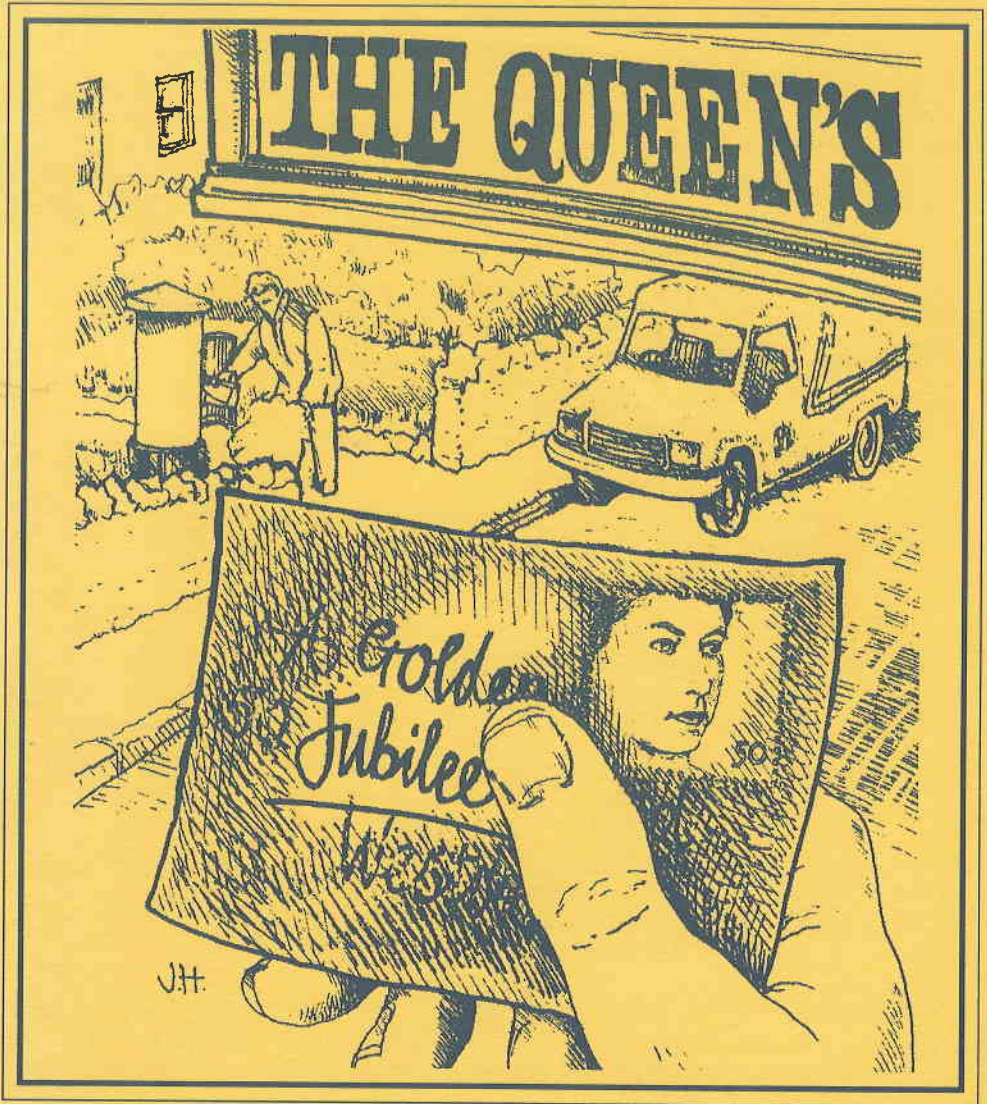
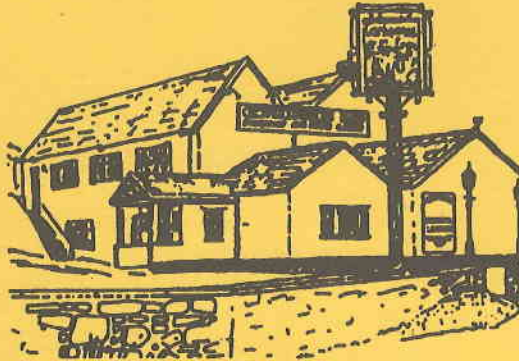


BLEADON



VILLAGE NEWS 53

CATHERINE'S INN



a "Hungry Horse" Restaurant

~ ~ ~ ~ ~
Bleadon Road, Bleadon

Tel: 01934 812275

~ ~ ~ ~ ~
Open for food and Drink
7 Days a Week ~ 12noon to 10pm

Extensive Menu
and Homemade Specials

Children's Menu and Indoor Play Area

YOUR PARISH COUNCIL

Penny Skelley (Chairman)	'Mendip Croft', Celtic Way, Bleadon.	Tel. 815331
Ray Hicks (Vice-Chairman)	Fiddler's View, Hillcote Bleadon Hill.	Tel. 811993
Len Chamberlain	Newbay Cottage, 21 Coronation Rd. Bleadon.	Tel. 814517
Malcolm Perry	'Westfield', 1 The Barton, Bleadon.	Tel. 813940
Penny Robinson	1 The Veale, Shiplate Rd. Bleadon.	Tel. 814142
Mary Sheppard	'Littlewood' Bridgwater Rd., Lympham.	Tel. 812921
Keith Pike	8, Whitegate Close, Bleadon.	Tel. 813127
Clive Morris	20, Bleadon Mill, Bleadon.	Tel. 811591
Ian Findlay	'The Mount', Shiplate Road, Bleadon.	Tel.

THE PARISH CLERK TO WHOM ALL CORRESPONDENCE SHOULD BE ADDRESSED IS:- BRUCE POOLE, 'The Chippings', 21 Stoneleigh Close, Burnham-on-Sea Somerset TA8 3EE Tel. 01278 787555

The Council meets on the 2nd Monday of the month at 7.30pm, in the Coronation Hall. An agenda is published on the Parish notice board, and any member of the public who would like to, may attend these meetings, and raise any issue of interest at the end of business.

WE AIM TO PUBLISH THIS VILLAGE MAGAZINE FOUR TIMES A YEAR -
MARCH, JUNE, SEPTEMBER AND DECEMBER

HOWEVER WE MUST POINT OUT THAT ANY DATE SENSITIVE MATERIAL
SHOULD BE SENT TO THE EDITORS FOR INCLUSION WELL IN ADVANCE AS WE
CANNOT GUARANTEE A DEFINITE PUBLICATION DATE.

The deadline for the next issue will be Friday 13th September 2002

**UNLESS OTHERWISE STATED THE OPINIONS AND COMMENTS EXPRESSED IN
THIS NEWSLETTER ARE THOSE OF THE CONTRIBUTOR AND NOT OF THE
BLEADON PARISH COUNCIL.**

**ANYONE WHO HAS ANY COMMENT TO MAKE ABOUT THIS PUBLICATION
SHOULD CONTACT THE EDITOR - WE AIM TO FOLLOW 'AN EQUAL
OPPORTUNITIES' POLICY - SO IF YOU DISAGREE WITH ANY OF THE VIEWS
EXPRESSED YOU HAVE THE RIGHT OF REPLY!**

CHAIRMAN'S REPORT

It is with pleasure that I write my first report for the Bleadon Village News. I was elected Chairman two months ago following the resignation of Peter Smart. Chairman for three years, Peter served the village with great enthusiasm and dedication, and I hope to be able to emulate his Chairmanship in the future. Peter is recovering well and we look forward to seeing him at village functions before too long. The work of the Parish Council continues in good heart; all matters arising are carefully considered and actioned.

Most recently, the main event has, of course, been the Jubilee and I wish to offer my congratulations and thanks to all in the Village for helping to make the Jubilee Celebrations such a resounding success. The Golden Jubilee memento programme was delivered, the Jubilee Stone unveiled and tubs planted with golden yellow plants. The three days of events started with the Jubilee Ball in the Coronation Hall; superb jazz band, great fun and dancing, not to mention the first wave of Jubilee mug selling! Sunday saw the Jubilee Church Service, followed in the evening by "Singing in the Reign" in a Hall packed with fans - a wonder the roof wasn't raised by the laughter! Monday, still going strong, weather mixed, Open Tower and the Street Party - many families, picnics, games for all, surely as good as it used to be?! As you can tell, Bleadon Village excelled, in style, for the Jubilee celebrations - a great success to be proud of, made possible by the support of all the village.

I look forward to submitting my future reports on the Parish Council's work in the Village News. May I thank you for your continued help and support.

Penny Skelley
Chairman, Bleadon Parish Council

ADVERTISING IN THE VILLAGE NEWS

These are the current advertising tariffs for our Village News Magazine:

FULL PAGE	£40	HALF PAGE	£25
THIRD of PAGE	£20	QUARTER PAGE	£15

This is an annual fee and covers the cost of advertising in all of the four issues. We aim to publish the Magazine in June, September, December and March. For further information contact Penny on 814142.

NB at the moment there is no charge for small personal ads.

BLEADON CORONATION HALL COMMITTEE

Following the Annual General Meeting in April the following appointments were made:

- Chairman and licence holder Len Chamberlain
- Vice-chairman Keith Pyke [Parish Council]
- Treasurer Clive Morris [Parish Council]
- Secretary Les Masters [Village]
Mrs. D.Tozer [Friendship Club]
Mrs. J. Reeves [Ladies Club]
Mrs M. Henley [Bridge Club]
Mrs. C. House [Bleadon Players]
Mrs. L. Riding [Bowls Club]
Mrs. N. Frewin [Toddler Group]
Mrs. B. Ware [Scouts/Brownies]
Chris Cudlipp [Horticultural Soc.]
Mrs. B. Patterson [Parochial C.C.]
- Booking Officer Mrs. J. Jones [ex officio]

No doubt, many photographs were taken of the Village Celebrations over the four day Jubilee holiday. The Committee would like to obtain as many as possible, in order to put on a permanent display in the Hall. If anyone is willing to donate a photograph, would they please contact any Member of the Hall Committee or The Parish Council.

Len Chamberlain

CHURCH OF ST. PETER & ST. PAUL

The excitement mounted as the bunting went up and as the flowers and the Flower Committee members seemed to fill all corners of the Church. This celebration was going to be a big one - a special one - and indeed every aspect of the Queen's Golden Jubilee lived up to expectations. The four days at the start of June will long be remembered and I congratulate all who contributed in so very many ways - both in the Church and in the wider community. The flower Festival was wonderful and I thoroughly enjoyed the Jubilee service - rousing traditional hymns, beginning with the National Anthem, and the special contributions by Brownies and Cubs. The former added humour to a history lesson and led us all in three cheers for Her Majesty, while the latter perfected a special slow walk as they presented the Crown Jewels they had made under the expert guidance of Akela. They also showed us their map of the Commonwealth. Thanks to all the Friends of the Church for organising the 'Open Tower' and frightening off the rain!! May I wish a happy summer to you all - may the rain cease and the sun shine upon you.

Looking ahead to September - dates for your diary:

Sunday 15th Sept. 6.30pm WESTON GOSPEL MALE VOICE CHOIR

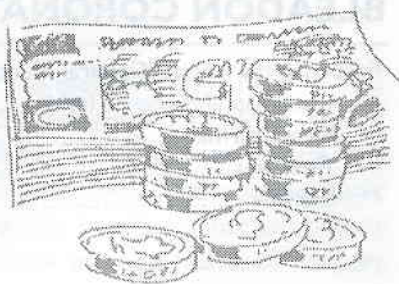
Sunday 22nd Sept 10.15am Service to be led by THE BISHOP OF TAUNTON
The Rt. Rev'd ANDREW RADFORD.

Sunday 29th Sept.- 10.15am. - HARVEST FESTIVAL FAMILY SERVICE.

David Parkinson - Rector. Tel. 812297

THE AREA COMMITTEE

Over the past year we have been pleased to support a number of projects proposed by the three Parish Councils in our ward (Bleadon, Hutton and Locking), but we think Bleadon may be missing out a bit!



Firstly many residents may not be aware that the Area Committee budget, which was suggested by Elfan and introduced by North Somerset in 2001, is not limited to ideas proposed by the Parish Council. Any community project by any resident living in Bleadon can be considered. Obviously it may be competing with projects from other villages in South Area and obviously ideas that will benefit the community at large are likely to receive higher priority, but it shouldn't stop you trying.

What should you do? Well, in the first instance, write to one of us outlining how much money you want, what you want to use it for, and how much you have already raised. If we believe your proposal has merit, we will submit it to the Area Committee and support its approval. The Area Committee meets about every four weeks, so the longest you are likely to wait before knowing the decision is about seven weeks. Good Luck.

Finally - both your North Somerset Councillors have been around for a few years now and not only know the local government system but are in positions of responsibility which can only make it easier for us to help you. At the NSC Annual General Meeting in early May, Cllr. Ap Rees was reconfirmed as a member of the Executive, with direct responsibility for Economic Development, Tourism and Leisure - which includes aspects of Planning, Weston Seafront, the Winter Gardens, Playhouse and Hutton Moor Leisure Centre etc. etc. Cllr. Peddlesden was elected Vice-Chairman of the Council for 2002, and also retains his position as Chairman of the Select Committee scrutinising Health and Well-being, covering Housing and Social Services. So - if you have any queries on these, or any North Somerset matter, give us a call.

**Cllr. Elfan Ap Rees Tel: 822524
and Cllr. Ian Peddlesden Tel: 812015**

MORE LIGHT ON THE SUBJECT



To date we have received several letters in response to 'The Street Lighting' issue and opinions seem to be equally divided. The Parish Council will discuss the subject at a forthcoming meeting and those who feel strongly about it should try to attend.

PJR.

BLEADON HORTICULTURAL SOCIETY - June 2002

The Queen's Golden Jubilee Stone is now in place. The engraving was carried out by Mr. Adams of Cheddar and we are very grateful to Brian Thorne for doing such a splendid job in putting the plaque in place. The stone was unveiled by Emma Yeo from Hanson's Batts Coombe Quarry in Cheddar and Keith Roberts from Marshall's Quarry in Bridge Road. Our thanks are also extended to Bob McKay who took the photos and has put them on the Bleadon website [www.bleadon.org.uk].

At the time of writing we are hopeful that the summer will have arrived so that we can enjoy the visit to Monkton Elm Nursery and Hestercombe Gardens. This will take place on Tuesday July 16th 2002 when a coach will leave the Coronation Hall car park at 9.30am. The cost of this visit is £10 per person bookable from Nesta or me on 813152.



Summer Flower Show

The 29th Show will take place on Saturday September 7th at 2.30pm. in the Coronation Hall. Schedules should be available from mid July. May I remind you that entry forms should be with me by 10.00pm on Thursday September 5th or handed into Lesley or Jon in the Post Office before closing time on that day

Chris Cudlipp

ELECTRICIAN

Steve Insley

WSM 812709 OFFICE
07971 413603 MOBILE



*No Quotation Charge
No Call Out Charge
No Job Too Small
No Obligation - No VAT*

HOUSEHOLD ELECTRICAL INSTALLATION WORK

- Security Lights • Extra Sockets • Shower Units • Telephone Extensions •
- New Fittings • Fuse Boards • Door Bells • Fault Finding ... Etc. Etc. •

LOOK AFTER YOUR GARDEN SHED!



Thefts of gardening equipment from sheds and back gardens is one of the fastest growing crimes and your property may be at risk! The value of items stored in your shed is probably much higher than you would imagine, so don't neglect it.

- Put away and lock up all tools at the end of the day
- Secure your shed with a strong hasp and staple and strengthen with a backing plate
- Replace standard shed hinges with strap hinges secured with coach bolts or security screws
- Use close-shackled padlocks, which are harder to cut
- Chain tools, cycles and garden equipment together using a high security chain or cable and a good quality padlock. Anchor the chain to the wall or floor
- Fit a mini-alarm
- Fit a metal grill on the inside of the window
- Postcode power tools and garden equipment

What about the garden itself?

- Use gravel paths because they are noisy
- Plant thorny shrubs beneath windows or against potential access routes like fences and walls
- Install security lighting
- Fencing should be 6 ft high, or consider adding to it with trellis

reprinted from 'Neighbourhood Watch'

WATERHOUSE ELECTRICAL SERVICES

Commercial • Domestic • Industrial Installations • Boiler
Steam • Control Pane • E S H Specialists



Kozy-kot, Shiplate Road, Bleadon,
Somerset BS24 0NG

Tel/Fax 01934 813803
Mobile 07860 597463

National Inspection Council for
Electrical Installation Contracting

NICEIC
APPROVED CONTRACTORS

BLEADON BEAT



Speeding within the Village.

Many villagers complain about vehicles speeding through the village. I have recently carried out checks in the Bridge Rd/Bleadon Rd area. Several motorists were found to be travelling in excess of the 30 mph limit and were advised accordingly. It was disappointing to find that most of those stopped were actually residents of the village. Please watch your speed at all times but particularly when in your own village.

Crime Warning

Hopefully the summer will eventually put in an appearance. With the warmer weather you will be tempted to leave windows and doors open for ventilation. Please take care that you do not leave your home vulnerable to passing thieves looking for easy pickings.

Dog Owners. Last Summer we had several incidents of sheep being attacked on Bleadon & Hutton Hill. When exercising your dog please ensure that it is under control.

Neighbourhood Watch.

Is your area covered? The benefits are many, the cost & time involved are almost negligible. Contact me for more information.

Village Surgeries are continuing to be held at the Church Room next to the vicarage. Forthcoming dates are set for 27th June, 12th July, and 16th August.

You can also contact me on 638181 if you have any concerns. If you call is more urgent, ie an ongoing situation then either ring 999 or 01275 818181 and ask for Weston-Super-Mare control room who will despatch an officer. You can also contact me by email on adrian.woolacott@avonandsomerset.police.uk **PC. 2307 Adrian Woolacott**

COACH TRIP TO WESTMINSTER

WEDNESDAY 2nd OCTOBER 2002

The Parish Council regrets that due to insufficient numbers of people wishing to participate, the planned coach trip to visit the Houses of Parliament has been cancelled.

THE WHITEGATE FARM DEVELOPMENT

All interested persons should note that there is a public enquiry into The Whitegate Farm Development on **Tuesday 13th August 2002 at 10am** in the **Town Hall, Weston-super-Mare**. Please attend if you can - your voice counts!

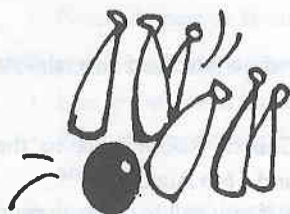
CREDIT WHERE CREDIT IS DUE

In describing the beginning of the Bleadon Players in the last issue, Howard Clements gives me too much credit and other people too little. Admittedly the idea was mine, but it takes more than one person to found a group. The inaugural meeting, in late 1987 was attended by about 20 people and the first show was held in April 1988. Founder members still active and/or living in the village are Pat Davies, Morag Edwards, Ruth James, Sandra Kelly Glenise Masters and David Osborne, and - Guy 'Jolly juggler' Morris was then a confident boy soprano.

There have of course, been many changes of personnel since then, but it is good to see the group still thriving.

Les Masters

"DYNASTY" OR "GENERATION GAME"?



Connoisseurs of sporting records can no doubt cite numerous examples of father and son playing in the same team, but surely there can be few instances of three generations doing so. Such is the case however, in the skittles team at the Queen's Arms, which this season fielded three of the Nipper family.

Grandfather Stan and son Jim, {whose ages I am much too discreet to disclose}, have set such a good example to 16 year old grandson Richard that he has emulated them in being the team's top scorer on the night. Perhaps more youngsters should be kept off the streets by being encouraged into the skittle alleys.

Les Masters

NEW FACES ... AT THE POST OFFICE ...



Jon and Lesley have arrived at the Post Office and would like to take this opportunity to introduce themselves and look forward to meeting you all in the very near future.

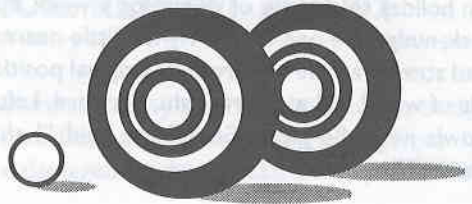
..... and on the Parish Council ...

Clive Morris from Bleadon Mill and Ian Findlay from Shiplate Rd. have been co-opted and our 'team' is once more up to full strength.

I am sure the villagers will join with me to welcome them and wish them success in their new endeavours.

SHORT PAT BOWLING

END OF TERM REPORT



In response to many requests, and I hope he is still there, I herewith put on paper the secrets of the Short Pat Bowling Club. I know that it is important to tell you whether I have been able to get the bowl to remain on the magic green carpet but I regret to say, this has not been achieved yet, but I am working on it and it should be possible to achieve this objective within the next five years. So do not despair, because I have plumbed/plummed the secret of this fascinating game.

I have long wondered why ALL the members of the above Club bowl with such accuracy and without, seemingly, much effort. I thought, originally, that it was because they all took Phyllosan, went for a brisk walk at the crack of dawn, or ate up their sprouts. Not a bit of it - I have by stealth and guile, sussed out the magic formula.

To those people, like myself, who know nothing of this grown up game of marbles, may I enlighten you as to one or two relevant pieces of information. Firstly, the Skipper of the team (hereinafter known as "Skip") stands at the business end of the mat and directs the bowlers where to put their bowls in relation to the yellow orb known as the Jack. This they do with no bother at all and we all have a cup of tea and a chocey bikky.

Now here is the vital bit of inform...!It is simple really! They have just taken a leaf out of Prince Charles' book. If he can have intimate chats with his rose bushes, they can certainly get cosy with a couple of bowls.

This revelation came to me as I followed one of the members into the hall on one of my Friday self- inflicted tortures. He was carrying a very elegant bag which contained his "woods". Of course, it could have had a sardine sandwich in it but it was rather large for that!! He informed me that he always took his "woods" home to give them a bit of spit and polish and get them all ready for their Friday night outing. I was most intrigued, did all the bowlers give the same tender loving care to their bowls. I watched carefully. Pete bowled - "Come on, my beauty" he said, "right to the Jack!!

"My beauty" rolled obediently from his hand, went up to that nasty bit of wood in the middle, did a pretty little hop right over it and strolled up nonchalantly to that elusive yellow thing in the middle.

Our redoubtable Captain, not to be outdone, gently stroked her wood, whispered something that I could not catch and let it loose on the mat. I watched transfixed, as it rolled right along the edge of the mat, did a smart U turn, and positioned itself just two inches behind the Jack.

I could not believe my ears when I heard one lady promise that she would take her bowls on holiday to the Isle of Wight for a week, if it would only hit the bowl on the left of the Jack; nudge the one on the right a little nearer, and look after that rather forlorn one that had strayed a little way from its original position. The bowl left her hand, came to the nasty bit of wood, did a smart Right, Forward, Left and purposefully set about rearranging the bowls near the Jack. "Great" she said, "I shall take that one with me when we go to Banwell."

Talk about bribery and corruption, I reckon Jeffery Archer could take lessons from our bowlers!!

While I was cogitating on the rumness of it all, I heard someone say, "Come on, Pat, it's your turn now". I picked up the nearest missile and listened to all the good advice that was being offered to me:- "Are you holding it right?" "Have you got it the right way round?" "Open your eyes""Don't forget to take your Cod Liver Oil!" Meanwhile, I had a quick word, to my bowl and said " See here you overgrown bulls-eye, you hit that little yellow orb or else..."

..... I don't think I should have done that??? the bowl leapt out of my hand, the piece of wood in the middle flung itself to one side while my bowl hurtled towards the Jack, the black and beautifully well behaved bowls were scattered under the piano and behind the stage and the slower ones were assisted on their way by my very recalcitrant wood. It finally ended up in the middle of the mat in lonely splendour, and an evil smirk on its face. They are still looking for the Jack!

Now I feel there is a lesson to be learnt here, if at first you don't succeed try bribery.

If I am not slung out of this very helpful and friendly Club, I shall join again in September (if they allow me through the door) and who knows, I might just hit the Jack (if they have found it!!!!?) On second thoughts, perhaps I should opt for Hand Gliding.

Pat Dain



IF YOU OWN A DOG
**PLEASE DO NOT ALLOW IT TO FOUL
THE FOOTPATHS AND VERGES OF
OUR VILLAGE.**

THE RESULTING MESS IS UNSIGHTLY AND A
SOURCE OF INFECTION.

BLEADON PARISH COUNCIL REPORT 2001/02

Chairman

The beginning of the Parish Council Year was dominated by the re-building of the bridge over the railway on the A370. The road was resurfaced and we are all benefiting from the improved road quality. The village roads were damaged by the increased heavy traffic but their refurbishment was quickly completed.

The old quarry on the corner of Bleadon Road and Bridgwater Road has been cleaned and landscaped and flower tubs planted up around the village centre. The lay-bys on Roman Road have now been re-landscaped and we are indebted to Andy Eddy of the Mendip Rangers for his help with the project. A bench seat has been erected in remembrance of George Wall and a commemorative plaque placed on the seat. New drainage and kerbing on Purn Way has alleviated the flooding problems but we are still waiting for the corner of Purn Way and Bleadon Road to be kerbed and resurfaced. We are however on the priority list. The village signs have recently received formal permission from North Somerset and two have been erected. The other two require special licence arrangements from the Highways Authority.

Bleadon Parish Council has had another satisfactory year of continuing village improvements and has a number of projects in hand to further improve the appearance and quality of our village.

CHURCHYARD

The graveyard area has continued to be looked after regularly by Mark Howe, and we thank him for his services. The trees have been kept in shape by Jon Kingcott and the boundaries tidied up with the help once more of the Community Volunteers. A new area for cremated remains has been approved by the Parish Council, as the existing plot by the South door is almost full.

Permission for a new notice board for the Church was granted and this has subsequently been erected next to the Church Rooms.

ALLOTMENTS

We started the year with a full complement of allotment holders but sadly not all managed to cultivate their plots, as we should have liked. It was necessary therefore to ask those involved to relinquish their plots in favour of the several people on the waiting list who were very keen to take over. At present though, we still have 2 allotments vacant and with spring upon us we should like these to be rented soon. Earlier in the year a new gate and lock was fitted to the entrance of the allotments. The new owner of the adjacent field requested regular access and a way was cleared for vehicles to drive through. Some members of the Parish council and some of the allotment holders did a tidy-UP operation in the autumn clearing the site of rubbish.

A strimmer was purchased for use around the village and in the allotments, - it is available on request.

A directive from the E.U. has stated that 'all public places, including allotments must have toilets and be equipped with disabled facilities' by 2004. It is hoped to implement this by next year. Most of the plots are looking very good and here is hoping for a good flowering season and much fruit and vegetables to enjoy. The rent for each allotment will be increased to £12.50p with effect from 29/9/02.

PLAYGROUND

The five trees planted in the Play Area in the early part of 2001 established themselves well and have developed nicely. Unfortunately one of the Rowans was destroyed by a mindless act of vandalism at the end of the summer. It seems that even our perfect Somerset village has its idiots. I'm pleased to say that we have been able to replace the tree and hope this the smaller replacement will be allowed to soon catch up with the others. Minor acts of vandalism and anti-social behaviour seem to have been a recurring nuisance in the Play Area throughout the year. We installed Disabled Parking signs in the car park at the request of some villagers, only to have them stolen within weeks. These were replaced, only to have the same fate befall one of them within a few more weeks. Similar attacks on the No Dogs signs and the Welcome to Bleadon Play Area signs are a sad reflection of the anti-social mindlessness of a few.

Damage to one of the picnic benches was necessary following loss of many of the nuts and bolts that held the two benches together. All fixings have now been replaced with locking nylo-nuts. It's always heartening to see families enjoying these simple facilities on sunny days.

The annual ROSPA inspection of the Play Area equipment confirmed the need to replace the four swing seats and support chains. The new swing seats and anti-twist chains should now provide safe play for another generation of Bleadon's youngsters. Fresh safety-bark was added to the slide and swing areas. And more special play sand was added to the sand pit.

Four new rubbish bins for the adjoining car park should ensure that we continue to enjoy a relatively rubbish free Play Area. Except for a problem with broken glass following a firework incident by Youth Club members in late November. It seems sad but inevitable that the worst of the litter appears after Youth Club evenings. I'm pleased to report fewer problems with rubbish of late. Let's hope the improvement continues.

Our grounds maintenance contractor, Mark Howe, continues to do an excellent job of keeping the grass well cut and maintained.

In other public open space areas around the village we have:

- Cleared a considerable area of overgrown ground at the perimeter of the church yard
- With the help of volunteers planted up 17 barrel tubs around the village in the Spring and Autumn
- Renovated the village pumps and cleared the adjoining over-growth away
- Provided and installed a new bench-seat in the lay-bye on Roman Road
- Have begun planting of Bluebell bulbs and wild flower seeds in the quarry site on Bleadon Road. This follows two sessions of weed killing on the site by Mr Bill Ardley early last summer.



Jeremy W. Holyhead



RICS

CHARTERED SURVEYOR

Genuinely independent professional property advice:
commercial, residential and planning.

Phone 01934 811899

Fax: 0771 4301788

e-mail:

holysurveyor@yahoo.co.uk

Bring & Buy

Books, Cakes and
Fancy Goods

Raffle



Admission: £2

WORKING IN SOMERSET

THE SOLDIERS, SAILORS, AIRMEN AND FAMILIES
ASSOCIATION • FORCES HELP

REGISTERED CHARITY NO 210760

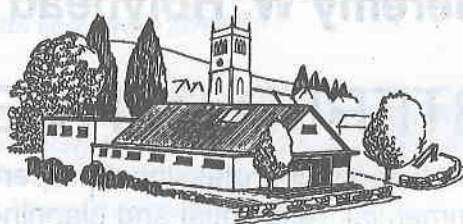
The national charity helping serving & ex-service men, women
& their families in need.

COFFEE AND DANISH

The Coronation Hall, Bleadon

Friday 6th September 2002 - 10.30am to noon

A LIST OF ORGANISATIONS WHICH REGULARLY USE THE CORONATION HALL



MONDAY'S

2pm-5pm	BLEADON BRIDGE CLUB	Mr D Munden 812772
7-9pm**	EXERCISE CLASS	Miss Bridgeman 750997
7:30pm 1st Monday	BRITISH SUGARCRAFT GUILD W-S-M BRANCH	Mrs C Peters 843754
7:30pm 2nd Monday	PARISH COUNCIL	

TUESDAY'S

10am-12 noon 2nd Tuesday	BLEADON SHORT MAT BOWLING CLUB	Mr J Ward 812136
2pm-4pm 2nd Tuesday	BLEADON LADIES GROUP	Mrs B Pugh 814362
2pm-4pm 1st, 3rd & 4th Tuesdays	BLEADON SHORT MAT BOWLING CLUB	Mr J Ward 812136
6pm-7:30pm	BROWNIES*	
6pm-7pm	WEIGHT WATCHERS	Mrs D Neale 416803
7:30pm Sept - May 1st, 2nd, 4th & 5th	BLEADON PHOTOGRAPHIC GROUP	Mr K Tapley 623877
7:30pm 3rd Tuesday Oct-May	BLEADON HORTICULTURAL SOCIETY	Mr C Cudlipp 813152

WEDNESDAY'S

10am-12 noon 2nd & 4th Wed	INFANT WELFARE CLINIC & TODDLER GROUP	The Health Visitor at the Clinic
10am-12 noon 1st, 3rd & 5th Wednesdays	TODDLER GROUP	Mrs N Frewin 811046 Jane Steel 629903
5:30pm-6:30pm	BLEADON BEAVERS**	Paul Morris 751083

7-30pm BLEADON PLAYERS/REHEARSALS Mrs S Kelly 812419

THURSDAY'S

10am-12 noon ART:WATERCOLOUR PAINTING Weston College
01275 810659

6pm-7-30pm BLEADON CUBS** Mrs S Rhodes 813497

8-00pm Sept - June BLEADON FOLK DANCING GROUP
1st & 3rd Thursday's Mrs J Thorne 814007

FRIDAY'S

2pm-4pm BLEADON FRIENDSHIP CLUB Mrs J Diment 812217

7-00pm Sept -May SHORT MAT BOWLING CLUB Mr J Ward 812136

7-30pm BLEADON SCOUTS** Mrs D Biddalf 645906

SUNDAY'S

3pm-5pm SHORT MAT BOWLING CLUB Mr J Ward 812136

** in the Jubilee Room

The Halls are available for hire by any private individual or organisation.

ENQUIRIES to Mrs J Jones: 812370

FORTHCOMING EVENTS IN THE CORONATION HALLS - PLEASE MAKE A NOTE IN YOUR DIARY!

Monday 8th July Parish Council Meeting

7.30 pm

Friday 6th July Coffee Morning

10.30-noon

SSAFA Forces Help
Penny Skelley 815331

Saturday 7th Sept Autumn Show

2.00 pm

Perry Skelley 815331
Bleadon Horticultural Society

Monday 9th Sept Parish Council Meeting

7.30 pm

Saturday 14th Sept Variety Show

Les Masters 811976

Saturday 28th Sept Harvest Supper

Bleadon Church Friends

7.30 pm	10th, 11th & 12th Oct Performance	Bleadon Players
Monday 14th Oct 7.30 pm	Parish Council Meeting	
Saturday 2nd Nov 10 am - 2 pm	Town & Country Fayre	Penny Skelley 815331
Monday 11th Nov 7.30 pm	Parish Council Meeting	
Saturday 16th Nov 10 am - noon	Coffee Morning	Bleadon Friendship Group
Saturday 23rd Nov 7.30 pm	Quiz in aid of CLIC	Pat Dain 812859
Monday 9th Dec 7.30 pm	Parish Council Meeting	
Saturday 14th Dec	Christingle Party	Bleadon Church Friends

Jon & Lesley Stokes

BLEADON POST OFFICE

*Newspapers • Off Licence Groceries
Bread • Milk Toys • Hardware • Fruit
Vegetables • Cigarettes
Confectionery • Greeting Cards
Stationery*

Tel:812200

BLEADON PARISH COUNCIL

BALANCE SHEET - For the year ended 31 March 2002

**Year ended
31 March 2001**

**Year Ended
31 March 2002**

CURRENT ASSETS

29315	Cash at Bank	28306
25	Debtors	-
500	Prepayments	500
2002	VAT on Receipts	3524
31842	TOTAL ASSETS	32330

CURRENT LIABILITIES

-	Creditors	(75)
8	Receipts in advance	8
-	Accruals	-
8		(68)
31835	NET ASSETS	32398

REPRESENTED BY

1500	Recreation Fund	1500
575	Tree Planting Reserve	575
250	Legal Costs Fund	250
-	Playground finprovements,	1500
3500	Street Lights Fund	4500
-	Queen's Jubilee	282
15300	Wonderstone	12300
10710	General Fund at 31 March	11491
31835		32398

BLEADON PARISH COUNCIL

INCOME & EXPENDITURE - For the year ended 31 March 2002

**Year ended
31 March 2001**

**Year Ended
31 March 2002**

INCOME

12083	Precept	21215
730	Interest Redd	404
150	Rents	153
410	Advertising	417
117	Grants	120
	- Other Income	282
	- VAT Recovered	2002
<u>13490</u>	TOTAL INCOME	<u>24593</u>

EXPENDITURE

9824	General Maintenance	11113
155	Allotments - Rent & Maintenance	195
6433	Administration	7882
179	Lighting	215
1326	Coronation Hall	3000
80	S. 137 Expenditure	50
<u>17998</u>	Total Expenditure	<u>22455</u>

GENERAL FUND

32093	General Fund 0/B	10710
13490	Total Income	24593
45583	Sub Total	35303
17998	Total Expenditure	22455
27585	Sub Total	12848
16875	Transfers from General Fund	1357
10710	General Fund at 31 March	11491

BLEADON PARISH COUNCIL

OPEN SPACE EXPENDITURE - For year ended 31 March 2002

Year ended		Year Ended
31 March 2001		31 March 2002
189	Planting	213
2045	Tree Survey	-
-	Seat	202
-	Footpaths	-
-	Allotment Gate	206
425	Tree Planting	(575)
-	Playground Maintenance	806
349	Sundries	26
-	Bus Shelter - Celtic Way	440
<u>3008</u>	General Maintenance	<u>1662</u>
528	Bleadon Man	-
-	Notice Board	-
1008	Jubilee Gardens	-
-	Tubs & Baskets	291
-	Roman Road Improvements	1481
-	Tree Planting	-
-	Village Signing	6669
1306	Playground Improvements	57
2230	Car Park	40
-	Lighting	(1000)
<u>5072</u>	Village Improvements	<u>7538</u>
1644	Grass Cutting	1813
100	Church Clock	100
179	Lighting Costs	*215
<u>1923</u>	Other Costs	<u>2128</u>
<u>10003</u>	Total Open Spaces	<u>11328*</u>

* Deduct from Total

BLEADON PARISH COUNCIL

ADMINISTRATION BUDGET 2002/2003 -

For the year ended 31 March 2002

Year ended

31 March 2001

Year Ended

31 March 2002

ADMINISTRATION

- Clerks Salary	4326
- Stationery	871
- Faxes	15
- Insurances	1462
- Photocopying	449
- Postage	286
- Sundries	156
- Professional Fees	823
- Newsletter - Printing Costs	970
- Subscriptions	371
- Councillor's Expenses	181
- Overall Total	7882

Qualified Chiropodist

Mrs. Victoria J. Jones

M.S.S.Ch. M.B. CH.A.

Registered member of the British Chiropody & Podiatry Association

VISITING PRACTICE, BY APPOINTMENT

4 Whitegate Close,
Bleadon, Weston-super-Mare

Tel: 01934 812134
Mobile: 0467 847331

THE SOUTH WEST'S NEWEST GARDEN CENTRE

- Excellent range of gardening products
- 100's of varieties of houseplants, trees and shrubs
- Collections of the more unusual products & plants
- Free expert horticultural advice
- Restaurant open all day offering everything from Sunday roasts to high teas
- All year round free gardening events & festivals, ask in-store for details
- East access & free parking for all
- Just off Junction 22 of the M5

OPEN EVERY DAY

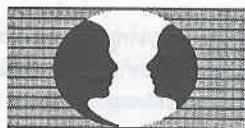
Mon - Sat: 9am - 6pm

Sun: 10am - 4.30pm



**Sanders
gardenworld**

BRISTOL ROAD, BRENT KNOLL, SOMERST TA9 4HJ. Tel 01278 76111



*"The future doesn't have to be
the same as the past"*

No matter what the problem is or how bad things may seem, sharing it with a professionally trained counsellor can make a difference and lead to a brighter future. Take the first step and telephone for a no charge, confidential, initial consultation.

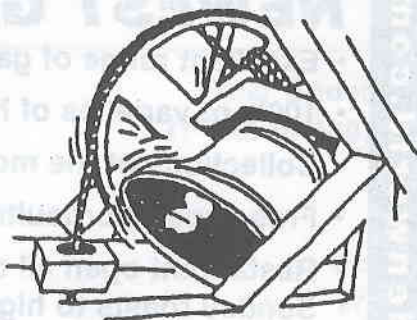
Alan Robinson 01934 744123

"You don't have to suffer in silence"

THE BELLS OF ST PETER & ST PAUL

BLEADON, WESTON-SUPER-MARE

The exact date of any bells being hung is not known but may have been as early as the first half of the 17th century, - the massive oak bell frame has a date of 1627 on one of the king posts. The very same frame still holds the present ring of six bells, and although tie bolted, is in a sound condition.



It is known that five of the six bells were cast by Edward Bilbie in 1711 and the sixth in 1925 by the famous Whitechapel Foundry.

These five bells were re-hung on metal instead of wooden headstocks, and ball bearings rather than plain bearings in 1984 – thus making the bells easier to handle.

Visitors who visit Bleadon also notice one unique feature; the bells are hung in an anti-clockwise direction. This curious phenomenon is shared with Crowcombe, on the Quantocks and Bath Abbey.

The heaviest bell is the tenor weighing 10cwt., a mere lightweight when compared to the tenor of Wells Cathedral at almost three tons.

Campanology or the art of Bell Ringing.

As we all know from recent events bell ringing celebrates Jubilees as well as the joy of weddings and victories, intones the sadness of deaths and funerals, and summons people to church.

The bells in towers as those mentioned above in Bleadon Church do not ring recognisable tunes as do chimes or carillons, but ring in sequences called 'changes' which are as disciplined and orderly as the stones and timbers of the towers themselves.

Bells for change ringing are hung in stout frames that allow the bells to swing through 360 degrees. Each bell is attached to a wooden wheel with a handmade rope running around it and the mechanism is in such perfect balance that 10year olds and octogenarians alike can control the largest bell easily.

The bells are arranged in the frame so that their ropes hang in a circle in the ringing chamber below. Into each rope is woven a tuft of brightly coloured wool [sally], which marks where the ringer must catch the rope while ringing.

Bells are rung from the 'mouth up' position, and with each pull of the rope it swings full circle to reach the 'up' position again, then the next pull sends it back in the other direction.

Ringing bells in a precise relationship to one another is the essence of change ringing. Rung in order from the lightest, highest pitched bell to the heaviest, the bells strike in a sequence known as rounds which repeat and change ringing is when the bells change places in a complicated pattern.

The bells ring out in a rich cascade of sound and change ringing depends on real bells, each swung in a complete circle by a single person: six bells – six people, eight bells – eight people, usually standing in a circle. These people are mainly ordinary folk who enjoy climbing towers, working as a team and performing 'the exercise'.

At the moment the 'Bleaton Team' is looking for new recruits, anyone willing to give it a go will be welcomed and given a chance to decide if bell ringing is for them. No experience necessary – just a good degree of commitment [after all Sunday comes every week] and in return, a good social side is promised!

Apply to Peter Maffey on 813285 if you are interested. Long may our bells ring out!!

The information about our local bells is taken from a booklet that is available in the Church, and which includes many other historical notes.

The notes on campanology I found on a website.

Penny Robinson

17th CENTURY NUN'S PRAYER

LORD, Though knowest better than I know myself that I am growing older and will some day be old. Keep me from the fatal habit of thinking I must say something on every subject and on every occasion. Release me from craving to straighten out everybody's affairs. Make me thoughtful but not moody, helpful but not bossy. With my vast store of wisdom, it seems a pity not to use it all but Thou knowest Lord that I want a few friends at the end.

Keep my mind free from the recital of endless details, give me wings to get to the point. Seal my lips on my aches and pains. They are increasing and love of rehearsing them is becoming sweeter as the years go by. I dare not ask for grace enough to enjoy the tales of others' pains, but help me to endure them with patience.

I dare not ask for improved memory, but for a growing humility and a lessening cocksureness when my memory seems to clash with the memories of others. Teach me the glorious lesson that occasionally I may be mistaken,

Keep me reasonably sweet, I do not want to be a saint - some of them are so hard to live with - but a sour old person is one of the crowing works of the devil, Give me the ability to see good things in unexpected places, and talents in unexpected people. And give me, O Lord, the grace to tell them so.

Amen

WALKS IN NORTH SOMERSET

Guided walks are organised throughout the year by North Somerset Council's Ranger Service and Museum service.

The Rangers lead two guided walks a month, normally on a Sunday afternoon. These are designed to raise community awareness of the history, geology, environment and scenery of the area.



Locations are varied and spread across the district. You can explore the open countryside, coastal paths, woodland trails or towns and villages.

The long established 'Changing Landscapes' is a series of six walks led each year by the Museum Service between May and October. These explore the lesser-known parts of the district highlighting local history archaeology and landscape.

In the winter a smaller programme explores town locations. The guides, be they Ranger or Museum staff, always bring along a wealth of knowledge and experience as they lead the walkers along the trails and footpaths. **Why not ring the Leisure Dept. on 01275 810995 or the Museum Service on 01934 621028.**

HOW TO KILL A GROUP

1. Don't go to meetings,
2. If you go, go late.
3. If the weather is bad, don't go.
4. If you go to a meeting, criticise those in charge
5. Never join a working group. Its easier to criticise than do anything positive
6. Feel aggrieved if you are not asked to do anything.
7. If the Chair asks your opinion on an important topic, say that you have no views; when the meeting is over say how you think things should be done
8. Never do more than is absolutely necessary, but when others set out a task willingly do their best, complain that the Group is run by a clique.
9. Delay paying any subscription as long as possible, or better still, don't pay at all.
10. Don't put yourself out trying to get new members, leave others to do this.
11. If a meeting is held, tell everyone it's a waste of money.
12. If no meetings are organised, say that the Group is dead and needs a bomb underneath it to wake it up.
13. If you are asked to join the Committee- refuse modestly.
14. If you are not asked, resign from the Group.
15. If you receive minutes, newsletters, etc. don't read them
16. If you don't receive them. Complain to the Secreutry or say that you don't get them so that you can be kept in the dark.
17. If you are asked for papers or articles - don't send them.



**FOR NEWS AND SPORT,
FROM THE BIGGEST STORY TO THE
SMALLEST CLUB REPORT**

Read about it in the

**Weston & Somerset
Mercury**



Telephone us on

Weston 422500 with all your local news



**LIZ ALDERSON
GRAPHIC DESIGNER**

Appletree Cottage, Old School Lane,
Bleadon, North Somerset, BS24 0PF

t 01934 813197 m 07905 223975
e liz.alderson@virgin.net

design for company literature, corporate identity, magazines,
newsletters, exhibitions, web sites, advertising & direct mail.

BLEADON LADIES CLUB

We meet every 2nd Tuesday of the month in the Coronation Hall at 2.30pm. It is an ideal place to come and make new friends, so why not join us? – we do have some very interesting talks.

July 9th A member Joy Wilkinson will talk about her holiday in America and this will be followed by a cream tea.!

August 13th Our annual outing this year is to Honiton for the morning market, followed by lunch at Ottery St.Mary. In the afternoon we are off to Sidmouth for a stroll along the seafront.

We are currently looking for ladies to help with the trolley at the hospital. The club is responsible for doing this every four weeks on a Wednesday afternoon, so if you feel that you are able to help please contact me on the number below. We look forward to welcoming new members, so come and join us for a chat and good company.

Barbara Pugh - Tel. 814362

10 SOMERSET QUESTIONS

1. In which town are Castle Bow, Castle Green and the Castle Hotel.
2. In which area of Bristol is Bristol Blue glass made.
3. In which town did mute swans ring a bell for food.
4. What is the local name for bilberry.
5. What are Dabinette, Kingston Black and Hany Masters Jersey
6. Where is Bat's Castle
7. With which sport in Somerset are Alley and Gimblett associated
8. Where are the sculptures of two giant Stag Beetles named Ying and Yang.
9. What was the name of the head of the Doone family.
10. Where is one of the oldest yews in Europe



answers on page 27

BLEADON SMALL ADS

DO YOU NEED HELP ... with writing letters, cards or addressing envelopes? If you are visually impaired or suffer from some other disability and you would appreciate help then ring Mary Ashley (Contact us) on 812667 she will be only too pleased to assist you.

I would be interested in knowing how many of you in Bleadon are on the 'net' - perhaps we could set up a small interactive group. I would also be happy to receive articles for this Magazine via e-mail if it is more convenient to some of you. **E-mail:** pen_rob @lineone.net

LEXMARK COLOUR INKJET PRINTER FOR SALE ... Compatible with Windows 98 £20. ring 814142

FOR SALE ... seasoned firewood, 2 sizes from £45 Tel. Bleadon 811355.

FOR SALE ... Home wine-making equipment - just about everything you need to start (inc. Demi-johns and a recipe book) - all you will need to provide are the ingredients. No good offer refused. Tel 814142

MENDIP VALE LANDSCAPES

Established 1988

Fencing
Garden Design
Hard Landscaping
Fully Qualified Tree Surgeon

Tree Care
Tree Removal
Site Clearance

☎ Jon Kingcott 01934 814665

Mobile 07767 250215

BRIDGE GARAGE

(Prop: Peter Briffitt)
BLEADON VILLAGE

AT YOUR SERVICE

TELEPHONE: 01934 812206

BLEADON CHURCH - PARISH MAGAZINE

Monthly 30p

News, Views, Reports
Times of and information about
Services and special events.

*To get your copy, phone
Pete Williams on 812020*

Also obtainable from Bleadon Post Office



9. Sir Ensor Doone, 10. Ashbrittle
1. Taunton, 2. Redcliffe, 3. Wells, 4. Whortleberry, 5. Cider apples, 6. Dunster, 7. Cricket, 8. Bristol Zoo Gardens,

SOMERSET QUESTIONS - ANSWERS

STEPHEN & CO.

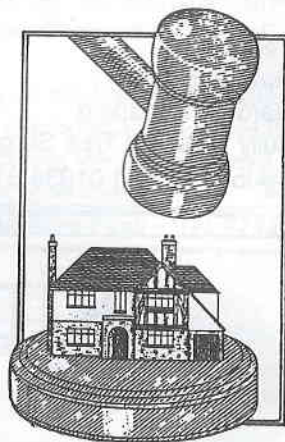
CHARTERED SURVEYORS

01934 - 621101

Buying Selling & Professional Advice
on all property matters

Chartered Valuation Surveyors
Auctioneers
Estate agents

Next to Town Hall
Weston-super-Mare BS23 1UP
Fax: (01934) 621519
E-mail: Stephenandco@easynet.co.uk

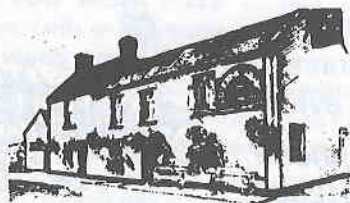


QUEEN'S ARMS

FREE HOUSE

Chris and Anita welcome you to our traditional village pub

With a warm and friendly atmosphere. Relax and enjoy ales direct from the cask, excellent food from our menus and a good selection of wines.



- Chefs Special Board
- Regular Beer Promotions
- Guest Ales
- Sunday Night Quiz
- Skittle Ally

In the 2002 Good Beer Guide

Tel/Fax 01934 812080 or visit our web site at www.queensarms.co.uk

Plastech Windows

Simon Bradbury

High Quality

U.P.V.C. Windows

Door - Patios

Conservatories

Fascias - Cladding

Tel: Bleadon 814500
Mobile: 0777 4475736



SOMERSET FASCIAS

MAINTENANCE FREE UPVC

FREE QUOTATIONS & ADVICE

FASCIA BOARDS & SOFFITS • GUTTERS & DOWNPIPES
• CLADDING • ROOFING

References on request - Competitive Prices - Quality Workmanship
ALL INSTALLATIONS & MATERIALS FULLY GUARANTEED

Tel: 01934 628793 - Mobile: 07710 727595

CGF ROOF/HOUSE CHECK

Tel: 01934 644430
Fax: 01934 643267

Weston Business Park, Unit 14b
The Airport
Weston-super-mare
North Somerset
BS24 8RA

**ROOF • PVC-U REPLACEMENT SPECIALISTS
HOUSE MAINTENANCE • ALTERATIONS • DECORATING**

Mark Howe

OFFERS

REGULAR GRASS CUTTING
HEDGES & TREES CUT
SHRUBS PRUNED
FENCE ERECTING/REPAIR
FENCE PAINTING
TURFING
PATIOS & CHIPPINGS LAID

**SLIPPERY PATHS & PATIOS
PRESSURE WASHED**

mark howe

gardening service

9 Malvern Road
Weston super Mare
North Somerset
BS23 4DE

Phone: 01934 413594
or
0777 327 2003

This Newsletter is Edited by **PENNY ROBINSON** of 1, The Veale, Bleadon

THE COVER DESIGN IS BY JOHN HICKLEY

Published by **BLEADON PARISH COUNCIL**, Bleadon, North Somerset.

Produced & Printed by **GFS Print** Telephone (01934) 622409 · Fax (01934) 612079