

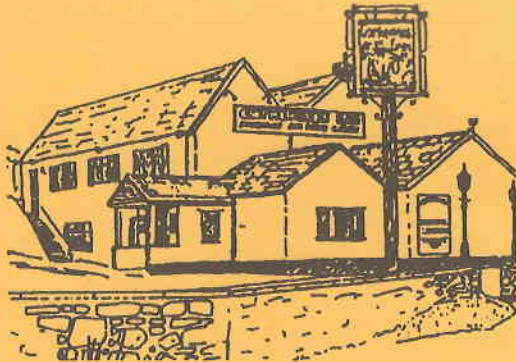
50

BLEADON VILLAGE

NEWS

J.H.

CATHERINE'S INN



a "Hungry Horse" Restaurant

Bleadon Road, Bleadon
Tel: 01934 812275

Open for Food and Drink
7 Days a Week
12pm to 10pm

Extensive Menu
and Homemade Specials

Children's Menu and Indoor Play Area

YOUR PARISH COUNCIL

PETER SMART (Chairman)	Hillside Cottage, Shiplate Road, Bleadon	☎ 812849
RAY HICKS (Vice-Chairman)	Fiddler's View, Hillcote Road, Bleadon Hill	☎ 811993
LEN CHAMBERLAIN	Newbay Cottage, 21 Coronation Road, Bleadon	☎ 814517
MALCOLM PERRY	Westfield, 1 The Barton, Bleadon	☎ 813940
PENNY ROBINSON	1 The Veale, Shiplate Road, Bleadon	☎ 814142
PENNY SKELLEY	Mendip Croft, Celtic Way, Bleadon	☎ 815331
MARY SHEPPARD	Littlewood, Bridgwater Road, Lympsham	☎ 812921
KEITH PIKE	8 Whitegate Close, Bleadon	☎ 813127
NICK WALL		

THE PARISH CLERK TO WHOM ALL CORRESPONDENCE SHOULD BE ADDRESSED IS
BRUCE POOLE 10 South St. Burnham on Sea, Somerset ☎ 01278 787555

The Council meets on the second Monday of the month at 7.30pm, in the Coronation Hall. An agenda is published on the Parish notice board, and any member of the public who may like to attend these meetings, and raise any issue of interest at the end of busine

CHAIRMAN'S REPORT

Those of you who use Roman Road and Shiplate Road will have noticed that the potholes and damaged verges have been repaired by the special machine hired by North Somerset Council. The Parish Council are very pleased with the results following their many requests for remedial action.

The lay-bys on Roman Road have been refurbished and new surfaces put in place.

Work is due to start in the next month on drainage and kerbing on Purn Way and a new Crib Wall system will be constructed on Accommodation Road to stabilise the rhyne embankment. The road will need to be narrowed to a single lane with provision of traffic lights for a period of five weeks.

The trees overhanging Bridge Road will shortly be trimmed back and we have also requested that the trees along Bleadon Road at the Purn Way junction be cut back and made safe.

*P.Smart
Chairman*

~ ~ ~ ~ ~

GOLDEN JUBILEE CELEBRATIONS - 2002

The Queen's Golden Jubilee commemorating the 50th anniversary of Her Majesty's accession to the throne, will be celebrated on "Jubilee Weekend" covering 1 to 4 June 2002.

The Parish Council has agreed to invite all interested organisations in the village to attend an extended meeting before the October Parish Council meeting, when ideas for a Jubilee party can be discussed. The meeting will commence at 7.30 p.m. on Monday 8th October 2001.

NOTE: The Deadline for the next issue of Bleadon News is Friday 23rd November 2001.

CHILDREN'S PLAYGROUND



On Wednesday August 1st a lady took her grandchildren to the children's playground and sat on one of the new benches. The seat on the bench broke and she hit her head.

The reason the bench collapsed was that some vandal had removed the nuts and bolts.

The Parish Council has had to replace the damaged parts and, if they are able to discover the identity of the culprit, he, or she, will be presented with the bill.

Any act of vandalism affects the whole village, replacement or repair of damaged equipment is paid for from the village taxes and increased insurance costs.

P. Smart

~ ~ ~ ~ ~

CHURCH OF ST. PETER AND ST. PAUL

HARVEST FESTIVAL - SUNDAY 30th SEPTEMBER

10.15 a.m. FAMILY AND PARADE SERVICE and presentation of gifts - mainly tinned produce, please, for ease of storage and distribution to families in need.



6.30 p.m. HARVEST FESTIVAL SUNG EUCHARIST

Gifts of fruit and vegetables are asked for so that the Church can be decorated in the traditional manner. These may be brought to Church on Thursday or Friday 27th or 28th September. As usual, the main door will be unlocked between 9.00 a.m. and 5.00 p.m.

This has been a very difficult year for rural communities and, in our worship and celebrations, we will not be unmindful of that. Prayers for our farmers and others throughout the region and beyond have been said in Church throughout the year and will continue to be.

REDECORATION OF THE NAVE

At the time of writing, contractors are about to move into Church to redecorate the Nave, bringing it up to the standard of the Chancel, which was redecorated when the Chancel roof was repaired a few years ago.

This will complete the restoration programme which began shortly before I came to Bleadon in 1988. It has been a long and costly process and I am grateful to all who have contributed in any way.

LOOKING AHEAD TO NOVEMBER AND EARLY DECEMBER -

EVENSONG OF ALL SOULS - SUNDAY 4th NOVEMBER - 6.30 p.m.

A special Service remembering and praying for those who have died during the past year or so. Names of others who have died at any time may be submitted (in writing, block capitals, please) for inclusion in the list of names.

REMEMBRANCE SUNDAY - SUNDAY 11th NOVEMBER

10.15 a.m. Remembrance Sunday Service - Sung Eucharist, traditional Hymns, Readings and Prayers, Silence, laying of wreaths.

ADVENT CAROL SERVICE

Sunday 2nd December at 6.30 p.m.

CHRISTINGLE AND TOY SERVICE

3.30 p.m. Sunday 16th December. Followed by teaparty.

David Parkinson
Rector

FRIENDS OF BLEADON CHURCH

Our luck with the weather finally ran out on August 4th, the date of the Rectory Garden Party. It thundered and rained; everything was soaked, but our spirits weren't dampened as we carried everything back to the church room where the gallant band of ladies dispensed drinks and cakes to helpers and the few souls who braved the rain and turned up to support the Garden Party. Well done and thank you to all who were involved on the day in whatever way. Better luck next year.



SATURDAY 29th SEPTEMBER - HARVEST SUPPER

This year's Harvest Supper will be held on Saturday 29th September in the Coronation Hall at 7.30 p.m. Tickets at £5.00 available from the Post office or from Friends committee members. Entertainment by Bleadon Players, bar, good company; what more could you want? Please buy your tickets early to avoid disappointment and to aid catering arrangements.

SATURDAY 13th OCTOBER - FESTIVAL OF HYMNS (GYMANFA GANU)

This is part of the Weston Art Festival. Please see elsewhere in this publication for further details or contact Graham and Leoni Rogers.

SATURDAY 27th OCTOBER - LINE DANCING

There will be an evening of Line Dancing (including a demonstration) in the Coronation Hall on Saturday 27th October at 7.30 p.m. Tickets £4.00 to include supper available from the Post Office or Friends committee.

SUNDAY 16th DECEMBER - CHRISTINGLE

There will be a Tea Party in the Scout Hall following the service in church for Christingle. Everyone is very welcome. Offers of sandwiches, cakes and other party edibles would also be welcome. They may be taken to the hall prior to the service or contact Reyn and Jeanette Badger.

MONDAY 17th DECEMBER - PUNCH AND PIE PARTY

Mr. and Mrs. Frost have kindly offered to host the Punch and Pie Party at Purn House Farm on Monday 19th December at 7.30 p.m. Tickets as last year £2.50. Start Christmas early. Sing carols and enjoy a drink and mince pies!

Thank you to everyone who supports the Friends of Bleadon Church throughout the year in the various events which are staged.

From October Graham Rogers will be taking over as Chair of this Committee and I'm sure that the support shown will continue. All the best Graham. Thank you to all who have helped me over the last two years.

Barbara Hartree 814812



A SADDLESORE SUCCESS!

JOHN O'GROATS TO LAND'S END -
SPONSORED CYCLE RIDE FOR
THE CANCER RESEARCH CAMPAIGN



June 2001 by Christopher Parkinson of Bleadon Rectory.

Chris covered 940 miles in 13 days on his mountain bike. The final amount raised was £965.92 to which will be added tax reclaimed under the Gift Aid arrangements. Congratulations to Chris and thanks to all who supported him.



PERSONAL ESTATE PLANNING

Sandra Kelly

Licensed Will Consultant

It costs you to make a will. It costs your estate much more if you don't

Consultations in your own home

Telephone 812419

PEP Legal Services, Crown House, 1 Stafford Place, Weston-super-Mare

A LIST OF ORGANISATIONS WHICH REGULARLY USE THE CORONATION HALLS

Mondays

2-5pm	Bleadon Bridge Club	Mr. D. Munden	812772
7-9pm**	Exercise Class	Miss M. Bridgeman	750997
7.30pm 1st Monday	British Sugarcraft Guild W.S.M. Branch	Mrs. E. Lambert	01278 786586
7.30pm 2nd Monday	Parish Council		

Tuesdays

10-12noon Sept.-March	Art: oil & acrylics **2nd Tuesday in New Hall**	Weston College	01275 810659
10-12noon 2nd Tuesday	Bleadon Short Mat Bowling Club	Mr. J. Ward	812136
2-4pm 2nd Tuesday	Bleadon Ladies Group	Mrs. B. Pugh	814362
2-4pm 1st, 3rd, 4th	Bleadon Short Mat Bowling Club	Mr. J. Ward	812136
6.00-7.30pm	Brownies**	Mrs. R. Lang	750827
7.30pm 1st, 2nd, 4th, 5th	Bleadon Photographic Club	Mrs. G. Taylor	812475
7.30pm 3rd Oct/May	Bleadon Horticultural Society	Mr. C. Cudlipp	813152

Wednesdays

10am-noon 2nd & 4th	Infant Welfare Clinic & Toddler Group	The Health Visitor at the Clinic	
10am-noon 1st, 3rd & 5th	Toddler Group	Mrs. N. Frewin	811046
5.30-6.30pm	Bleadon Beavers**	Paul Morris Jane Steel	751083 629903
7.30pm	Bleadon Players Rehearsals	Mrs. S. Kelly	812419

Thursdays

10-12noon	Art Watercolour Painting	Weston College	01275 810659
6-7.30pm	Bleadon Cubs**	Mrs. S. Rhodes	813497
8.00pm 1st & 3rd Thurs. Sept.-June	Bleadon Folk Dancing Group	Mrs. J. Thorne	814007

Fridays

2-4pm	Bleadon Friendship Club	Mrs. J. Diment	812217
7.00pm Sept.-May	Short Mat Bowling Club	Mr. J. Ward	812136
7.30pm	Bleadon Scouts**	Mr. H. Boyce	

Sundays

3-5pm Sept.-May	Short Mat Bowling Club	Mr. J. Ward	812136
--------------------	------------------------	-------------	--------

** in the *New Hall*

The Halls are available for hire by any private individual or organisation.
ENQUIRIES to **Mrs. J. Jones: 812370.**

BLEADON BABY & TODDLER GROUP

SUMMER OUTING



This year our outing was planned for mid-July and it was suggested that Court Farm would be a great day whatever the weather.

We arrived at around 10 o'clock. Although it was dry, it was extremely windy so many of us headed for the indoor play barns. The children enjoyed the slides and playhouses, a ride on tractors and a large sand pit. Those of us feeling bold braved the winds and enjoyed the climbing frames, trampolines and wobble bridge. Although still affected by the Foot & Mouth scares, there were horses, goats, rabbits and owls, to name but a few, that we were able to look at and stroke.

We met up at lunchtime for a picnic and then more playtime. We all had a great day and the children thoroughly enjoyed themselves which, of course, is what matters.

Our weekly sessions started again on Wednesday 5th September. We meet in the Coronation Hall at 10 a.m. Please do come along. Both you and your children will be made very welcome.

*Amanda Smallwood
01278 760090*

LIFE AFTER TODDLERS

Yes, Hutton does have its own village journal, so why write in Bleadon's? Well, since the village is in the unfortunate position of not having its own playgroup, this is a reminder to the parents/guardians of all three year olds that we are only a 10 minute drive over the hill.

Our OFSTED report earlier in the year was very good and we pride ourselves on preparing children for school both educationally and socially, having lots of fun, with parties and trips throughout the year. This term's topics include 'Me' and 'Autumn', with the highlight being our autumnal walk through the countryside around the village.

Since we opened five years ago Bleadon children have been welcomed at our group, whether they go on to Hutton, Uphill or any other school. We currently have a small number of vacancies for the coming year, so if you would like further information please call Nicky Hooper on 812567 for an informal chat.

A WALK MADE EASIER

Good news for local walkers is the recent diversion of the footpath on to Helling Hill alongside Wonderstone House. The new stile is much easier to find and you simply have to cross Shiplate Road instead of walking a distance along it.

This makes a circular walk involving South Hill and Helling Hill (and, for the energetic, Roman Road) very much easier. From the village you can walk to the far end of South Hill aiming for the stone stile on to Shiplate Road. Directly opposite this is the new stile leading to

a path crossing the field next to Wonderstone House, at the end of which you come on to Hellenge Hill. From here, of course, you have a choice of several routes back to the village. Happy walking!

Les Masters

REMEMBER, REMEMBER - ELEVENTH NOVEMBER!

Some charities, for various reasons, can be somewhat controversial but I have yet to find anyone opposed to the Royal British Legion Poppy Appeal. The task of organising this year's appeal in Bleadon has been passed to me by Joan Diment after several years' successful service, and I hope we can at least maintain the same level of fund-raising. I have so far recruited four new collectors, all of whom live in the areas where they will be collecting. This means that the face appearing on your doorstep will most likely be a familiar one - always a help.

If you are hard to catch at home, do not despair; you will have other opportunities to buy your poppy. There will be collection boxes in the Anchor Inn, Catherine's Inn, the Church, the Post Office and the Queen's Arms. If we raise £1 for each adult in Bleadon we will easily beat the previous record. Is that a lot to ask?

Les Masters

FOCUS ON GOBLIN COMBE

GOBLIN COMBE ENVIRONMENTAL CENTRE

Autumn Courses 2001

Bird Song Identification

A series of four evening sessions developing the skills needed to identify British birds by their song. Tutor Chris Sperring, of the Hawk and Owl Trust, will lead these interesting and informative courses.

Details:

September 6th, 13th, 20th & 27th, 7-9pm. CODE: BS3

October 4th, 11th, 18th & 25th, 7-9pm. CODE: BS4

£20 for the four sessions, concessions apply.

Astronomy for Beginners

Learn how to use a star chart and locate those difficult to find constellations. This series of sessions mixes classroom and practical exercises to develop the basic skills of astronomy.

Details:

October 3rd, 10th, 17th & 24th. 7.30-9.30 p.m. CODE: AST1

November 7th, 14th, 21st & 28th, 7.30-9.30 p.m. CODE: AST2

£20 for the four sessions, concessions apply.

Natural History of Owls

Chris Sperring is a specialist in raptors and expert in passing on his knowledge and passion for owls. These four sessions combine study of lifestyle and habitat requirements and outdoor sessions prowling for owls. You will not fail to come away with a grater appreciation of one of Britain's top predators.

Details:

November 1st, 8th, 15th & 22nd, 7.30 - 9.30 p.m. CODE: OW2
£20 for the four sessions, concessions apply.

Courses in Development

These include:

- A series of sessions looking at the use of digital cameras and camcorders, and creating a CD archive of digital material
- Fungi forays. Getting into the woods searching for fungi, edible and otherwise.
- Survey techniques. The Parish Wildlife Wardens of North Somerset have been carrying out a boundary survey. Courses will be run to train more people in the techniques for surveying hedgerows.

Development of The Goblin Combe Centre

Links with Weston College continue to be developed and new links are being forged with Cannington Agricultural College so that in future we may be able to provide training that leads to nationally recognised qualifications.

Marketing material is to be developed that will be sent to all local schools and colleges with the aim of increasing the educational use of the centre.

Vince Russett, Archaeologist for North Somerset Council, is delivering a half day session on Conservation and archiving of photographic material.

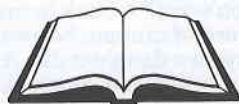
A Plea

Anybody with any ideas for courses or events that we can run or get involved with please let me know. Do you need a training session? Could we provide it? Please ask.

Contact Kenton Keys at Goblin Combe Environmental Centre on 01934 833723 or email me at kenton.keys@n-somerset.gov.uk.

A BOOK FOR BEDTIME

As Autumn draws in, the urge to settle down in front of the fire with a good book becomes stronger.



But what to read, with so much these days to choose from?

Everyone has their own preferences, and it gets harder and harder to find the time and the concentration to enjoy a book these days, with a dozen new TV channels apparently appearing every day, computer games proliferating at an even faster rate, and so many other, less demanding ways to spend our free time.

Less demanding yes - but not always so rewarding. Reading means using the brain and the brain, like any muscle, needs regular exercise to keep it fresh and fit. No wonder that first book you've read for a while takes effort - that brain needs a work out!

So with that in mind, or for those who read avidly already, but might welcome a few more ideas, we thought we'd offer a few book choices. Villagers are warmly invited to send reviews of these or other books they have enjoyed to the editors for the next issue.

A good story:

Louis de Bernieres - Captain Corelli's Mandolin

This book has been on the bestseller lists for years now and rightly so. Don't be put off by the hype about the film, which didn't do the book justice, or the long words (I had made many visits to the dictionary before I'd finished it), this is an epic tale: funny and moving in turn it presents the Second World War in an entirely fresh, but terribly authentic way, with a tremendous feeling of humanity.

A nostalgic delight:

Richard Webber - Dad's Army: A Celebration

This book covers everything you ever wanted to know about the TV series featuring the absurdly pompous Captain Mainwaring and the lovably eccentric Corporal Jones. If you're enjoying the repeats on BBC2 now, why not get the reading muscles going with a look at this lavishly illustrated companion?

And for the younger TV viewers:

Keith Topping - 'Slayer': The Totally Cool Unofficial Guide to Buffy

This does for Buffy - she kills vampires with high kicks and witty quips, if haven't seen the show - what the volume above does for Dad's Army, except that, of course, its coverage is less complete since Buffy is still going strong. What makes this book special amongst the many similar titles is its British author, who makes links and explains references that would otherwise be lost on the bemused Bleadon viewer of these hip Californian teenagers' lives. A treat for Buffy fans!

Unique:

Jean-Dominique Bauby - The Diving Bell and the Butterfly

What makes this autobiographical book so unusual is the way it was written. The author, who was editor of the French fashion magazine *Elle*, suffered an enormous stroke at the age of only 33. In the short remaining time of his life, completely paralysed, totally speechless, and only by slowly moving one eyelid, he painstakingly 'dictated' this book. It is a fascinating read, but the real marvel is in the way it was written. One of those books you put down with an overwhelming sense of gratitude for how lucky you are!

For your toddler, children or grandchildren:

Mary Hoffman and Caroline Binch - Amazing Grace

Recommend for World Book Day, this simple story tells how Grace first wins, and then excels in, the part of Peter Pan in her school play, despite the prejudice of others. The moral, which

the gorgeously rich illustrations convey as strongly as the text, is that, 'kids - you can do anything you want?' A book to inspire all children to pursue their dreams - a worthy moral, but with a word of caution: be aware that some younger readers may misinterpret the ending the way my own daughter did. A week after we first read the book together, I was trying as usual to get her to eat; and, as usual, she was stalling. This time, however, she was being cheeky too; she was adamant that she *could* have chocolate and *not* toast if she wanted, and my authority was being seriously questioned. Where did such forwardness come from, I wondered.

'And why do you suddenly think, young lady, that you can do exactly as you please?' I demanded.

'You told me,' she said.

'Me?!'

'Yes, you. You said I could be like Grace, and do whatever I want to.'

Enjoy the books!

THE RELUCTANT GARDENER

Now when the snail is on the thorn
And the blook is on the rose,
Then gardeners all wax lyrical
In poetry and in prose.

'My garden is a wondrous place.'
Said one that I leave nameless.
'A lovesome thing, God wot,' said one
Not only name but shameless.

A garden *is* a wondrous thing
And you had best believe it.
It's also a demanding thing
You can't just sit and leave it.

The chap who said that gardens (yuck)
Were 'A lovesome thing God wot.'
Went on to eulogise, in verse
Shaded pool and ferned grot.

That shaded pool may be a wow
To best impress a neighbour,
But digging it, you may as well
Be sentenced to hard labour.

And as for that - whate'er it be,
That infernal ferned grotto.
(Please no, don't tell me what it is,
I'd really, rather not know.)

I wonder if that poet pushed
A mower through his lawn?
Or cut back pyracantha
Without swearing at the thorn?



I wonder if he wrestled with
A maniac hedge trimmer?
Or sought to keep his toes intact
From a lethal lawn edge strimmer?

My garden is the place to be
On sunny days when I need it.
I'd laze around and take my ease
If I didn't have to weed it.

If I didn't have to scarify,
If I didn't have to manure,
Intoxicate the slugs with beer,
My worries would be fewer.

If I didn't have to feed the lawn
Or mow and trim and strim it.
If I didn't have to prune the rose
Or ... but you see there is no limit.

Each hopeful Spring brings problems new
With graft throughout the season.
I'd try the patience of a saint
And rob a man of reason.

I would ignore if I could
But she who must be obeyed
Loves her garden more than me.
So hand me down my spade.

JVF

FORTHCOMING EVENTS IN THE CORONATION HALLS PLEASE MAKE A NOTE IN YOUR DIARY

Saturday 29th September	7.00 p.m.	Harvest Supper - Bleadon Church
Monday 8th October	7.30 p.m.	Parish Council Meeting
Saturday 27th October	7.30 p.m.	Line Dancing - Bleadon Church
Monday 12th November	7.30 p.m.	Parish Council Meeting
Saturday 17th November	10am-12noon	Coffee Morning - Friendship Club
Saturday 17th November	7.30 p.m.	Line Dancing - Bleadon Scouts
Saturday 24th November	7.30 p.m.	Quiz in aid of CLIC
Saturday 8th December	10am-12noon	CHRISTMAS FAIR
Monday 10th December	7.30 p.m.	Parish Council Meeting

Bleadon Horticultural Society

The summer visits to Copse Hall, Brent Knoll and Bicton Botanical gardens were very successful and everyone enjoyed themselves fully, especially as the weather was good to us on both occasions.

By the time you read this the 28th Summer Flower Show will have come and gone, but at the time of writing we anticipate a splendid show and hope that visitors and exhibitors alike will appreciate it and the effort that goes into its organisation.

The Autumn programme of events kicks off with a slide show set to music by Ken Lees. This is on Tuesday 16th October at 7.30 p.m.

On Tuesday November 20th we have David Smale coming to talk on lavender 'The Norfolk Way'. He will be bringing some products of the aromatic plant with him to sell.



The year will be rounded off with our social event on December 18th. The Beetle Drive was very popular last year so make a note of it in your diaries now!

Thank you to everyone who has supported us in any way throughout the year and 'Happy Gardening' for next season. Time to plant the Spring bulbs for 2002!!

Chris Cudlipp

~~~~~

## 50 NOT OUT

As you probably realise from the beautiful cover drawn by John Hickey, this issue of Bleadon News is its Golden Anniversary.

Looking back at old issues, an interesting picture of village life presents itself.

Some things change: editors, Parish Councillors, reprographic styles, adverts (remember when Sanders sold bread not bulbs?), and - oh! of course - the small matter of Avon, to name but a few.

Some things never change: The Coronation Hall and the groups that use it, the May Fayre, Contactus, The Bleadon Players, and *well-justified complaints about dogs fouling the pavements!*

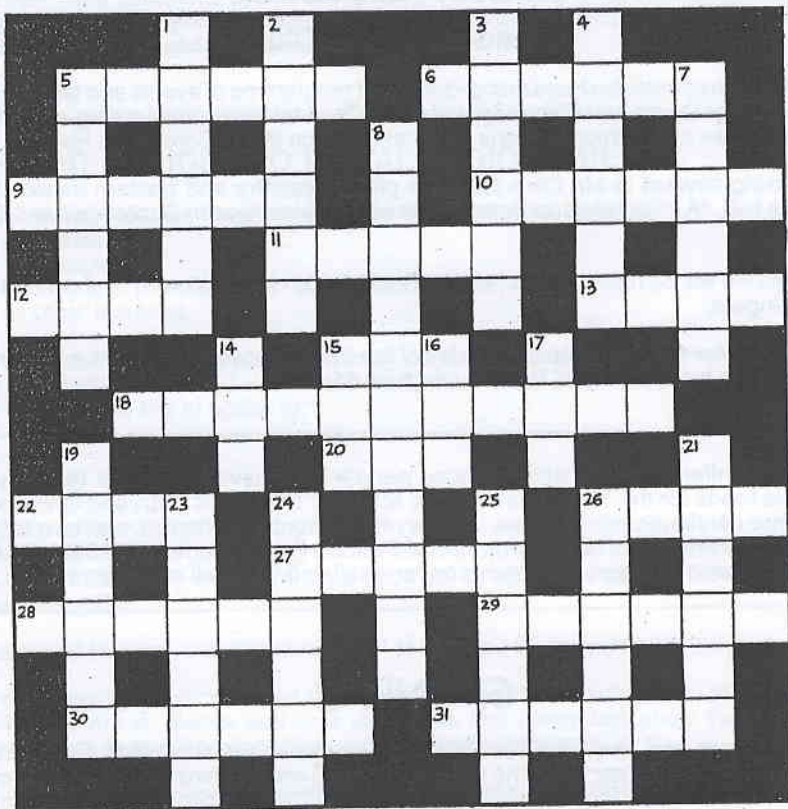
The earliest issues we have to hand are from ten years ago and then the pages were boiling with debate about proposals to establish a playing field, an idea which had already been simmering for over five years by that time.

Since then the village has grown again considerably, and all new visitors still wonder why such a thriving place can't boast a football or cricket team to call its own. These things take time!

In recognition of the fact that a few villagers might have memories of their own, we would like to remind you all that contributions to the magazine are always most welcome.

And to test your memories still further, here is the crossword from Issue No. 8. Anyone who can do it from memory, ring Chris Tarrant today! The rest of you will have to work it all out again, or find the answers in issue 51!

# A CROSSWORD FOR BRAINS WITH A BLEADON BIAS



## Clues Across

5. Is a royal licence needed for these arms? (6)
6. Ancient race having its own way (6)
9. A call for help for our fayre (6)
10. and whole and perfect (6)
11. Did this farm belong to the local squire? (5)
12. Cut short the hunting whip (4)
13. Bamboo, sugar or raspberry? (4)
15. Unite when the morning damp returns (3)
18. My true story is confused with a secret journey (7, 4)
20. Cattle disease initially (1, 1, 1)
22. 5 and 19 (4)
26. Hard or Brighton (4)
27. Criminal name for a hilltop! (5)
28. Where the bride in song waited in vain (6)
29. Within the house (6)
30. Did legions of them use the long straight road to Christon? (6)
31. The second good man of our parish (2, 4)

## Clues Down

1. Hills found among the women diplomats (6)
2. Just myself (4, 2)
3. Upset nerves run into a channel (6)
4. Stable (6)
5. Pursue it in Bridge Road (6)
7. Take it on from our village hall to earn yourself a halo (6)
8. Reconstructed tower ends on wonderful rock on Shiplate Road (11)
14. Now the fire is out it's a common tree (3)
15. Gossamer (3)
16. The handy envelope contains a tinge of colour (3)
17. The cunning fellow can discolour the paper (3)
19. Must be weighed to sail to local premises (6)
21. One learns this lane doesn't lead there anymore (6)
23. One of the little things found in Weston bay (6)
24. Feature in silver is painful (6)
25. Runs along the edge of minis, maybe (6)
26. Gold' finch (6)



---

## DOCKS AND DUCKS: Bleadon Ladies Club

Over the past few months we have enjoyed a varied programme of events and talks. Members visited Gloucester Docks and Slimbridge Wild Fowl Trust for their annual outing, and a number of interesting talks and demonstrations have taken place in the Coronation Hall.

We are looking forward to Mr. Chris Rainbow playing country and western music and also Sue Court's talk, "A Pilgrimage to Burma". These will take place in September and October respectively.

At Christmas we will be having a luncheon at Beachlands Hotel, followed by a concert by The Rainbow Singers.

All events take place on the second Tuesday of the month between 2.30 and 4.30 p.m. If you would like to join please contact Barbara Pugh on 814362.

Roy and Jennifer Collins thank all those people who have continued to give non-perishable foods for the YMCA 'Set Up Box' scheme. They want everyone to know that the scheme continues and that they are very happy to collect items or receive them at their home (3 Fern Lea, off South Combe, off Bleadon Road. Phone 01934 815357). If the scheme is new to you give Roy and Jennifer a call and they will enlighten you.

## GRANPAS

After polar bears and the four toed sloth, the species Grandparents Excelentus, or common Granpa (in some parts of the world - Gramps) are the most favoured of nature's creations. They have no natural enemies - except maybe the occasional Grandma. They have leisure to pursue whatever takes their fancy and they are not expected to play more than an advisory role in the bringing up of their grandchildren. Being a Granpa is delightful; everybody loves a Granpa, and the world is his to roam in content. Granpas are simply delightful creatures. Grandpapas are austere, aloof and usually too rich to be happy. Grandads are sentimental drooling fools, Granpappy's senile cackling idiots and Grandfathers stand in a corner going 'tick-tock'.

Granpas, on the other hand are courteous, active, loveable, loving, generous, big hearted, kind to animals and grandchildren, and gifted.

The only creature that actively hunts Granpas is the ferocious Elderly Grandma. Their appetite for Granpas is insatiable and they are difficult to dislodge when once they sink their teeth into a single Granpa. Prevention is the best defence so single Granpas should avoid high risk areas where Elderly Ladies gather, such as Darby and Joan clubs, Pensioners' outings, Barry Manilow concerts, and Uni-Sex Hair Salons. The only other serious threat to the single Granpa is the seductively venomous, Double Breasted Blond Gold-digger. However this species only fastens onto very rich Granpas with big flashy cars.

Let's face it. The world needs Granpas. We should not allow these delightful, loveable creatures to become extinct.



---

So please give generously to the World Fund for the Preservation of Granpas, Cheques, cash and Credit Card donations are all acceptable - in fact anything that can be turned into folding money will be gladly accepted. Research trips could take him to Las Vegas, Monte Carlo, Barbados .... and that takes money, lots of money!

Thanks to Granpa John Vincent for this

---

## WHAT IF GOD DECIDED TO INSTALL VOICEMAIL? ....

Thank you for calling Heaven. Please select one of the following options:

Press 1 for Requests

Press 2 for Thanksgiving

Press 3 for Complaints

Press 4 for all other inquiries.

I am sorry, all of our angels and saints are busy helping other sinners right now. However, your prayer is important to us and we will answer it in the order it was received. Please stay on the line. If you would like to speak to:

God, press 1.

For Jesus, press 2.

For the Holy spirit, press 3.

If you would like to hear King David sing a Psalm while you are holding, press 4.

To find a loved one that has been assigned to Heaven, press 5, then enter his or her Social Security Number, followed by the pound sign. If you get a negative response, please hang up and try area code (666).

For reservations at Heaven, please enter J-O-H-N followed by the numbers 3-1-6.

For answers to nagging questions about dinosaurs, the age of the earth, life on other planets, and where Noah's Ark is, please wait until you arrive. Our computers show that you have already prayed once today. Please hang up and try again tomorrow.

This office is now closed for the weekend to observe a religious holiday.

Please pray again on Monday after 9.30 a.m.

If you are calling after hours and need emergency assistance, please contact your local pastor.

Thank you, and have a good day!

---

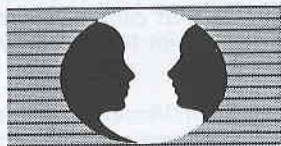
## WESTON ARTS FESTIVAL

Once again one of the items in the annual Weston Arts Festival programme takes place in Bleadon Church.

It will be an evening for those who like to sing or listen to hymns. There are eight traditional hymns in the programme and support items from Louisa Puddy, Mezzo Soprano, and an augmented church choir.

Entry is free, although there will be a retiring collection. The programme is non-denominational and hopefully all the hymns will be well known. This is an opportunity for you to lift up your spirits with a good sing - bring your family and friends.

Make a note now - October 13th at 7.30 p.m.



*"You don't have to suffer in silence..."*

No matter what the problem is or how bad things may seem, sharing it with a professionally trained counsellor can make a difference and lead to a brighter future. take the first step and telephone for a no charge, confidential, initial consultation.

**Alan Robinson 01934 744123**

*"The future doesn't have to be the same as the past."*

## *Qualified Chiropodist*

***Mrs. Victoria J. Jones***

*M.S.S.Ch. M.B.CH.A.*

*Registered member of the British Chiropody & Podiatry Association*

**VISITING PRACTICE, BY APPOINTMENT**

4 Whitegate Close  
Bleadon  
Weston-super-Mare

Tel: 01934 812134

Mobile: 0467 847331

**Ian and Leslie Sarginson**

## **BLEADON POST OFFICE**

***Newsagents • Off Licence • Groceries  
Bread • Milk • Toys • Hardware  
Fruit • Vegetables • Cigarettes  
Confectionary • Greetings Cards • Stationery***

**Tel: 812200**

---

## BLEADON FOLK DANCE CLUB

The Club resumed on September 6th 2001.

We meet the 1st and 3rd Thursdays in the month.

Our caller is John Thomlinson, with visiting callers during the year.

We meet at the Coronation Hall from 8 till 10 p.m.

Membership £1 per year - £1 per evening!

Come along, relax, enjoy a lovely evening of music and dance.

We are not experts! We all had to learn the movements.

Please join us, this is for you: Try it!

John Thomlinson (Caller)  
and Jean Thorne

-----

## WHILE AWAY A WEEKDAY: WEDNESDAY AFTERNOON WHIST DRIVE

We meet in the Church Room on a Wednesday afternoon 2 p.m. - 4 p.m. We are a friendly bunch of around a dozen - both male and female - and enjoy a pleasant afternoon with a break for tea and biscuits (although sometimes one member or another may arrive with surprise cakes!)

I am pleased to let the village know that, for the third year in a row, we have been able to donate £100 each to the Beavers, Cubs, Brownies and Scouts thus carrying on the good work started by Barbara Snelgrove, and we hope to continue with the same aim in the future and would welcome new members.

*Barbara Spackman*

-----

## CORONATION HALL MANAGEMENT COMMITTEE

At time of writing, the August sun is shining on one of the warmest days of the Summer.

But come the issue date, we will be into the Autumn, and thinking of the coming Festive Season.



This is a cue to remind you of our Annual Christmas Fayre which this year will be on Saturday December 8th, 10.30 a.m. until noon.



Why not enjoy the usual hot mince pies and coffee in a seasonal atmosphere, with Craft Stalls, Cakes, Bring & Buy and Raffle.

This event is always popular as it brings families and friends together in our own venue, The Coronation Hall.

So make a note of the date in your diary now.

*L.J. Chamberlain (Chairman)*



# H. Pitman & Sons

## *Funeral Directors*

- Our Experience is Your Assurance
- Offering a Personal and Sympathetic Service
- 24 Hour Service
- Prepaid Funeral Plans
- Private Chapel of Rest
- Home Visits

**Funeral to Suit all Budgets**

*For Immediate Service*

**Telephone: 01934 622738**

40 Milton Road, Weston-super-Mare

**FOR NEWS AND SPORT, FROM  
THE BIGGEST STORY TO THE  
SMALLEST CLUB REPORT ...**

*Read about it in the*

Weston & Somerset

# Mercury

*Telephone us on  
Weston 422500  
with all your local news*





---

The 50th issue of Bleadon News provides a good opportunity to look back. What was the village like 35 years ago?

## **GROWING BLEADON: A VILLAGE OF FRIENDS**

### **Post Card from Bleadon - Summer 1965**

We find ourselves in a small village not far from Weston-Super-Mare, at the start of a walk that will take you to Wells - if you have the energy to go that far!

It is a place of no main drainage, no street lamps, and no village constable. But it is a place of friendship.

It's nearness to Weston-super-Mare means that it is fast outgrowing its Parish Church. The Sunday morning services, for instance, have full congregations. But it is the very nearness to Weston that helps keep the village alive, for up on Bleadon Hill, with its fine views, the developers are doing very nicely thank you. There the bungalows and a few houses have been mushrooming - and the prices have mushroomed too! Plots of land are selling for £1500 and fairly average bungalows are fetching £5000 plus!! There has been some new building down in the village itself - a new street of bungalows hugs the contour line along the slopes of a lesser hill behind the Parish Church of St. Peter and St. Paul, whilst here and there new brick denotes what planners delight to call 'infilling'. Yet Bleadon is fortunate to be surrounded by a green belt.

There was a time, not so long ago, when the building line stopped far short of the top of the hill. Some older folk in the village can remember it easily. Then there was only a cluster of attractive low-ceilinged cottages of the large rectory, the small school, the pub and the quarry. All are still there of course, but the school only caters for village juniors - the older ones having to travel into Weston. And the quarry is no longer a quarry, the result of intense campaigning by the villagers themselves who complained about the dust and the danger from the explosions. A firm who manufacture concrete blocks from crushed stone now uses the buildings within the crater.

One of the advantages living in Bleadon is that the rates are not as high as those in Weston, where most people work. But as it was pointed out to us Bleadon has little in the way of amenities and the only light comes from the telephone kiosk and from the hotel; apart from that the roads are as black as pitch.

Sanitation is by cesspit and septic tank, and a not inconsiderable amount of effluent finds its way in the rhines that cut through the flat land bordering the main Weston-Bridgwater Road. Axbridge rural council, the local authority for these parts, has a mains sewage scheme in hand and it won't be long before it reaches Bleadon.

The villagers would also love to have their own policeman; the situation at present is that Bleadon is patrolled by officers from Bournville and as the beat is so extensive they are rarely seen in the village.

Like many another Somerset village, Bleadon has a fine church, the fabric of which has had to be somewhat restored during the past eight years. Death-watch beetle had taken its toll of the roof. The lead was therefore sold as scrap and the £700 raised went towards the cost of the new slate roof. Space was added to the nave by the removal of the organ from underneath the tower at the West End. A new organ chamber has been built with the £1800 legacy left by the late rector.

New oak choir pews were fitted and the varnish rubbed off the nave pews to give them a lighter, more natural colour at a cost of £4700. More improvements are still to come - a new stained-glass window, two other new windows and a new lead roof for the Tower.

Another £2000 is needed to accomplish this refurbishment and where does the money come from? 'From the Annual Garden Party' says the Rector. 'People find it hard to believe that these Events can raise nearly £400 in one afternoon, but they do?'

It is that sort of spirit makes Bleadon the Parish it is.

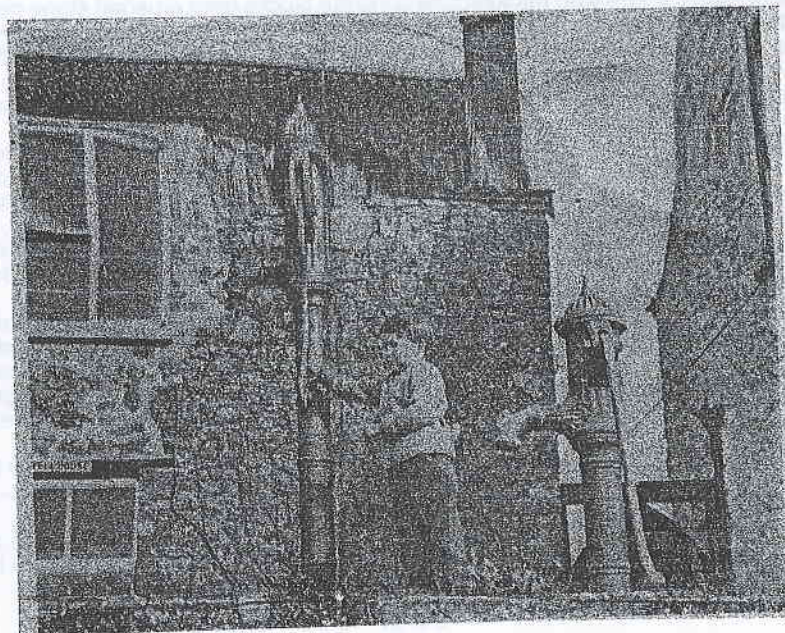
Some things never change!

Thanks are due to Mrs. Nipper, who provided the article from which these facts have been taken.



Bleadon basks in the sunshine

## **Growing Bleadon is a village of friendship**



Peter Manning, aged three, plays among the old pumps outside his home, The Well House



## VOLUNTEERS REQUIRED!

If you could spare an hour or two to help in the distribution of the village News, your help would be greatly appreciated. Please contact Penny 814142

**NOTE: The Deadline for the next issue of Bleadon News is Friday 23rd November 2001**

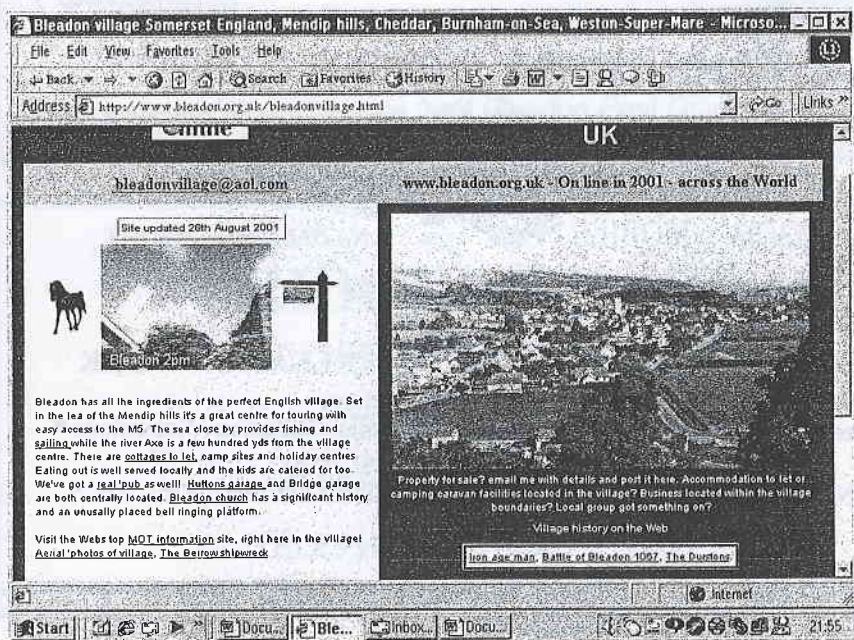
## CLIC QUIZ 2001

The 2001 CLIC Quiz will be on Saturday 24th November 2001 at 7.30 p.m. at the Coronation Hall. There will be super Raffle Prizes, a Ploughman's and the Bar will be open. The tickets are from Pat Dain, at 1 Purn Lane, Bleadon Hill, Tel. 01934 812859 at £5. Please come and have a happy evening and help CLIC to help children with cancer.

## Bleadon on the World Wide Web!

Readers may be interested to know that a section of Bleadon resident Bob McKay's own website is devoted to the village.

As you can see from the image of the site, which can be found at [www.bleadon.org.uk](http://www.bleadon.org.uk), there are links to information on the church, the Queen's, Bleadon Man, and other areas of interest. Bob is keen to develop this site, and can of course be contacted by email for those of you 'online'. Check it out!



# WATERHOUSE ELECTRICAL SERVICES

Commercial • Domestic • Industrial Installations  
Boiler/Steam • Control Panel • E S H Specialists

Kozy-kot, Shiplate Road, Bleadon  
Somerset BS24 0NG



Tel/Fax  
**01934 813803**

Mobile  
**07860 597463**

National Inspection Council for  
Electrical Installation Contracting



## **ELECTRICIAN**

**Steve Insley**

WSM 812709 OFFICE  
07971 413603 MOBILE



*No Quotation Charge*

*No Call Out Charge*

*No Job Too Small*

*No Obligation - No VAT*

### **HOUSEHOLD ELECTRICAL INSTALLATION WORK**

**\* Security Lights - Extra Sockets - Shower Units - Telephone Extensions \***

**\* New Fittings - Fuse Boards - Door Bells - Fault Finding .. Etc .. Etc. \***





**MENDIP VALE**  
**LANDSCAPES**

Established 1988

Fencing

Garden Design

Hard Landscaping

Fully Qualified Tree Surgeon

☎ Jon Kingcott 01934 814665

Tree Care

Tree Removal

Site Clearance

Mobile 07767 250215

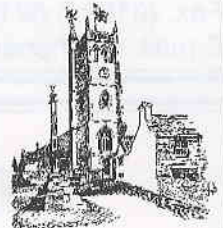
**BLEADON CHURCH - PARISH MAGAZINE**

Monthly 30p

News, views, reports,  
times of and information about  
Services and special events.

*To get your copy, phone  
Pete Williams on 812020.*

*Also obtainable from Bleadon Post Office*



**BRIDGE GARAGE**

(Prop: Peter Briffitt)

**BLEADON VILLAGE**

**AT YOUR SERVICE**

**TELEPHONE: 01934 - 812206**

# STEPHEN & CO.

Chartered Surveyors

01934 - 621101

Buying, Selling & Professional Advice  
on all property matters

Chartered Valuation Surveyors  
Auctioneers  
Estate Agents

Next Town Hall  
Weston-super-Mare BS23 1UP  
Fax: (01934) 621519  
E-mail: [stephenandco@easynet.co.uk](mailto:stephenandco@easynet.co.uk)



## THE QUEEN'S ARMS

Anita and Chris

*welcome you to our traditional Village Pub*



In a warm and friendly atmosphere,  
relax and enjoy real ales from the cask,  
a good selection of wines and excellent  
food from our menus

**-Skittle Alley -**

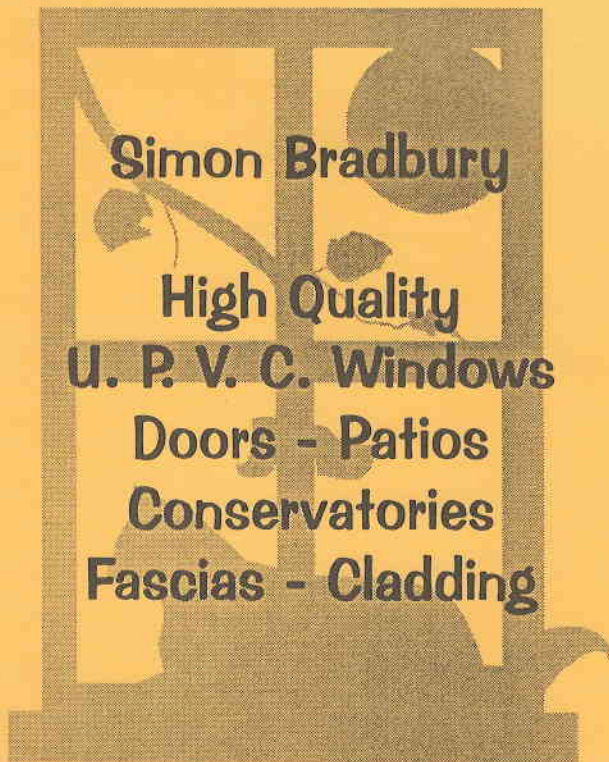
**Tel/Fax: 01934 812080**

or visit our website at [www.queensarms.co.uk](http://www.queensarms.co.uk)



*Your Local Friendly Village Company*

# **Plastech Windows**



**Simon Bradbury**

**High Quality**

**U. P. V. C. Windows**

**Doors - Patios**

**Conservatories**

**Fascias - Cladding**

**Tel: Bleadon 814500  
Mobile: 0777 475736**



## SOMERSET FASCIAS

Tel: 01934 628793 - Mobile: 0410 727595

Tel: 01934 510117 - Mobile: 0411 919873

FASCIA BOARDS & SOFFITS • GUTTERS & DOWNPIPES • ALL TYPES OF CLADDING  
TIMBER REPLACEMENTS • ROOFING REPAIRS • FREE QUOTES

*References on request - Competitive Prices - Quality Workmanship*

ALL INSTALLATIONS & MATERIALS FULLY GUARANTEED

Maintenance Free PVC with No VAT

## CGF ROOF/HOUSE CHECK

Tel: 01934 644430

Fax: 01934 643267

Weston Business Park, Unit 14b

The Airport

Weston-Super-Mare

North Somerset

BS24 8RA

**ROOFING • PVC-U REPLACEMENT SPECIALIST  
HOUSE MAINTENANCE • ALTERATIONS • DECORATING**

### Mark Howe

#### OFFERS

REGULAR GRASS CUTTING  
HEDGES & TREES CUT  
SHRUBS PRUNED  
FENCE ERECTION/REPAIR  
FENCE PAINTING  
TURFING  
PATIOS & CHIPPINGS LAID

**SLIPPERY PATHS & PATIOS  
PRESSURE WASHED**

mark howe

#### gardening services

9 Malvern Road  
Weston Super Mare  
North Somerset  
BS23 4DE

Phone: 01934 413594

Or

0777 327 2003

Edited by Penny Robinson (1, The Veale) and Steve Miles (16, The Veale)

Published by Bleadon Parish Council, Bleadon, North Somerset

Unless otherwise stated, the opinions and comments expressed in this newsletter are those of the contributor and not Bleadon Parish Council. Cover by John Hickley.

Printed by Malthouse, Taunton (01823-331111)