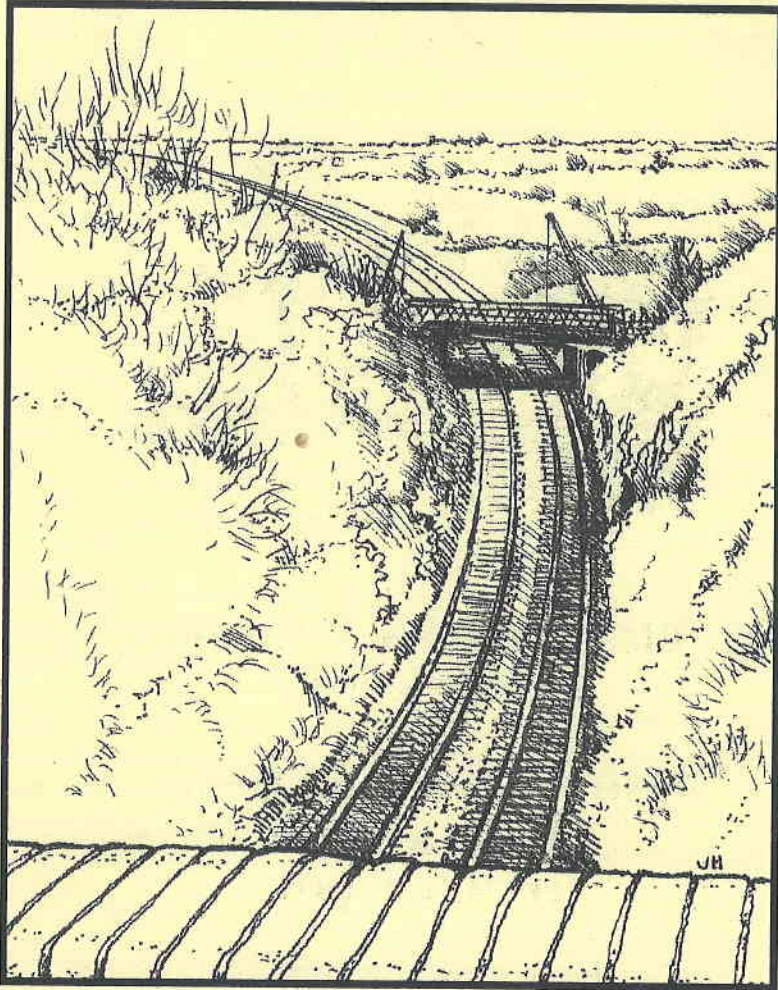
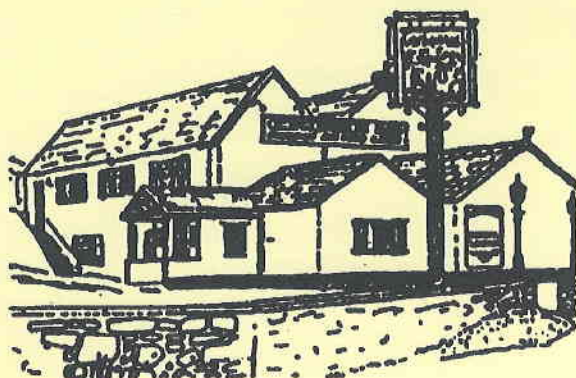


BLEADON



VILLAGE NEWS 48

CATHERINE'S INN



Bleadon Road, Bleadon
Tel: 01934 812275

Open for Food and Drink
7 Days a Week
12pm to 10pm

Extensive Menu
and Homemade Specials

Children's Menu and Indoor Play Area

YOUR PARISH COUNCIL

PETER SMART(<i>Chairman</i>)	Hillside Cottage, Shiplate Road, Bleadon	☎ 812849
RAY HICKS(<i>Vice-Chairman</i>)	Fiddler's View, Hillcote, Bleadon Hill	☎ 811993
LEN CHAMBERLAIN	Newbay Cottage, 21 Coronation Road, Bleadon	☎ 814517
MALCOLM PERRY	"Westfield", 1 The Barton, Bleadon	☎ 813940
PENNY ROBINSON	1 The Veale, Shiplate Road, Bleadon	☎ 814142
PENNY SKELLEY	"Mendip Croft", Celtic Way, Bleadon	☎ 815331
MARY SHEPPARD	"Littlewood", Bridgwater Road, Lympsham	☎ 812921
KEITH PIKE	8 Whitegate Close, Bleadon	☎ 813127
NICK WALL		

THE PARISH CLERK, TO WHOM ALL CORRESPONDENCE SHOULD BE ADDRESSED, IS:-
BRUCE POOLE 10 South Street, Burnham-On-Sea ☎ 01278 787555

The Council meets on the second Monday of the month at 7.30 pm in the Coronation Hall. An agenda is published on the Parish notice board and any member of the public may attend these meetings and raise any issue of interest at the end of business.

CHAIRMAN'S REPORT

The Parish Council is proposing to landscape the old quarry at the junction of Bleadon Road with Bridgwater Road and plan to erect new 'Bleadon Village' signs both here and at the Bridge Road/Bridgwater Road junction.

Specimen trees are to be planted in the Children's Playground and along the main Bridgwater Road. Flower tubs will be placed around the village and the Roman Road lay-bys are to be landscaped and equipped with seats. The trees in the Churchyard have been pruned and pollarded recently and this has greatly improved the general appearance. Lighting in the car park will be improved later in the year.

Our aim has been, and will continue to be, one of enhancing the visual aspect of Bleadon, whilst at the same time improving the facilities in the most cost effective way.

We, the Parish Council, do ask of you, the people who live here, to help wherever you can, especially when it comes to tidying up your own patch. See also the comments about the Doggy Nuisance!

Peter Smart, Chairman, Bleadon Parish Council

BLEADON CORONATION HALL - Management Committee

Many thanks to all who were good enough to complete the questionnaire circulated in January. The response was excellent and many constructive views were expressed.

Most of you are probably aware of our intention to apply for a substantial grant from the National Lottery in order to replace the old roof and extend the south end of the hall. Our surveyors and consulting engineers have now completed all the necessary work involved in such a substantial project and the detailed plans are now ready. We hope to have these on display in the hall together with full information about the implications of the proposed alterations and the benefit that hall users will notice for many years to come.

Of course, all this depends on the result of our grant application. Let's all hope it's a 'YES!'
L J Chamberlain (Chairman)

AN APOLOGY...

I wish to apologise for stating that the 'Weston and Somerset Mercury' facts were incorrect when I penned my report for the last issue of the Village News. I now acknowledge that the facts as stated by the paper were correct at the time that the Bleadon News went to press.

Peter Smart, Chairman of the Parish Council

ANY QUESTIONS : HORTICULTURAL SOCIETY



The 27th Spring Flower Show will take place on Saturday 17 March in the Coronation Hall and as well as the usual displays there will be a joint demonstration of lace making given by Joyce Plumb and Pam Hale. Lesley Stimson will also be giving a wool spinning display so the Hall that day will be a real hive of activity!

Schedules for the show are available from the Post Office or committee members and the entries can be returned to Chris Cudlipp at 16 Totterdown Lane, Bleadon Hill by 10.00 pm on Thursday 15 March or handed into the Post Office by 5.30 pm on that same day, where Ian has kindly volunteered to accept them.

The meeting in April will take the form of a "Gardeners' Question Time" so if you would like the answer to a particular problem please submit the question in advance to me, or any other committee member, before 10 April. This will give me time to prepare them for the meeting on Tuesday 17 April.

On Tuesday 15 May Sally Gregson will be giving an illustrated talk on 'Cottage Gardens'. She usually brings along various plants for sale and you will be given the opportunity to see them at different stages of development on the slides.



The evening meetings are open to anyone at £1.00 per session.

Chris Cudlipp (Hon Secretary)



PERSONAL ESTATE PLANNING

Sandra Kelly

Licensed Will Consultant

It costs you to make a will. It costs your estate much more if you don't

Consultations in your own home

Telephone 812419

PEP Legal Services, Crown House, 1 Stafford Place, Weston-super-Mare

Brought to you by

Wanted
HOSTS for Party line
Benefit from discounts

To Book call
01934 824368



Serendipity Linen

The 'Story of Cotton' Presentation

*An unexpected Discovery of The Finest quality Cotton and Linens
from around the world*

New for old scheme available



CHURCH OF ST PETER & ST PAUL

The Rev'd David Parkinson

The Rectory

☎ 01934 812297

SPECIAL SERVICES

MOTHERING SUNDAY AND PARADE SERVICE **SUNDAY 25 MARCH**

Mothering Sunday Family and Parade Service starts at 10.15 am.

PASSIONTIDE ANNUAL SERVICE **SUNDAY 1 APRIL**

This annual service beginning at 6.30 pm includes hymns, anthems and readings for Passiontide led by our augmented choir. This year we will be joined by members of St Andrews Church, Bournville. Come along for wonderful singing and a wonderful devotional occasion.



PALM SUNDAY **SUNDAY 8 APRIL**

The blessing of Palm Crosses in the Church Room commences at 10.10 am followed by a procession into Church for Sung Eucharist at 10.15 am.

HOLY WEEK **MONDAY 9 APRIL**

Services will be held every day during Holy Week (see the poster outside the Church and in the Church Magazine). The week leads up to the Easter Celebrations.

EASTER WEEKEND **SATURDAY 14 and SUNDAY 15 APRIL**

Services are as follows:-

Saturday 14 April: 8.00 pm Sunday 15 April: 8.00 am 10.15 am 6.30 pm

ST GEORGE'S DAY CELEBRATION **SUNDAY 22 APRIL**

The parade and Family Service starts at 10.15 am.

MAY FAYRE WEEKEND FAMILY SERVICE **SUNDAY 6 MAY**

Service begins at 10.15 am

ASCENSION DAY **THURSDAY 24 MAY**

A service at 7.30 pm with Sung Holy Communion 1662.

The Annual Parochial Church Meeting will be on Monday 23 April at 7.30 pm in the Church Room. We will establish the election of Church Warden, members of the PCC and other officers and representatives.

David Parkinson, Rector

TRUBLED WATERS OVER BRIDGE

Bleadon cheek

Villagers given "passports" by North Somerset council to enter Bleadon, while a main road is closed for repairs, have set up checkpoints with security guards to enforce a temporary traffic order banning non-residents.

(ARTICLE IN THE SUNDAY TELEGRAPH 11 FEBRUARY 2001)

The bridge closure debate has produced upsetting comments in the local press, on TV and local radio aimed at the Parish Council and the Bleadon residents. We have been accused of selfishness, unneighbourlyness and isolationism. Let us put a few facts down and get the whole issue into perspective.

On 8 May 2000, 10 months ago, Councillor Ap Rees informed your Parish Council of the proposed closure of the road and said that there were two schemes under consideration; the first entailed the total closure of the A370 for six weeks, the second involved partial closure, the setting up of lights and disruption of the traffic for fifteen months or so. It was considered by the Parish Council that serious traffic flow problems through the village for such an extended period would be intolerable and so it voted for the first option. The following month North Somerset opted for the six week course.



In November, at a meeting in the Town Hall, the Police, the Emergency Services and Badgerline buses all voiced concern that traffic congestion through Bleadon would prevent them from achieving their response times and should an accident occur south of the bridge who knows what the outcome would be. It was at this time that the idea of 'barriers and passes' was proposed and passed, and Bleadon Parish Council agreed to distribute those passes to the villagers - this was their only involvement in the scheme. The allocation and distribution of passes to other areas was not in their remit, and it has no authority over control of traffic barricades etc.

By the time you read this the system will have been in place for a few weeks and we can only hope that arrangements made by North Somerset will have kept the traffic to manageable proportions.

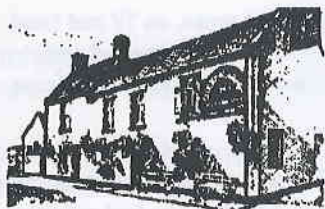
Finally I would like to thank all those volunteers who assisted the Parish Council in the distribution of the passes.

Peter Smart, Chairman of the Parish Council

THE QUEEN'S ARMS

Anita and Chris

welcome you to our traditional Village Pub



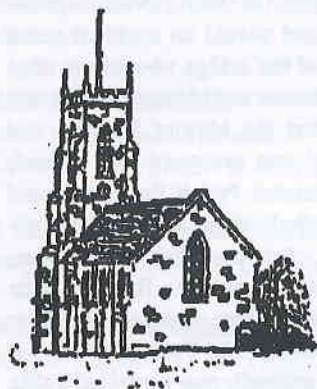
In a warm and friendly atmosphere,
relax and enjoy real ales from the cask,
a good selection of wines and excellent
food from our menus

-Skittle Alley -

Tel/Fax: 01934 812080

or visit our website at www.queensarms.co.uk

NOW IN
GOOD
BEER
GUIDE



H. Pitman & Sons

Funeral Directors

- Our Experience is Your Assurance
- Offering a Personal and Sympathetic Service
- 24 Hour Service
- Prepaid Funeral Plans
- Private Chapel of Rest
- Home Visits

Funeral to Suit all Budgets
For Immediate Service

Telephone: 01934 622738
40 Milton Road, Weston-super-Mare

count me in
Census2001

DID YOU KNOW...

that we all have to complete a National Census form every ten years? Well, it's come round again - **Sunday 29 April is Census Day**

An enumerator will call at every house during April so please check their authority badge. They will ask one or two basic questions and leave the census form with you to complete and return in the post. This is a statutory requirement and your support and cooperation is welcomed. Statistics from the census are used for long term planning for housing, transport, education, provision of health services and so on. It is a vital tool for government planning in the community.

Should you have any queries or problems in completing the form, please contact Clive Morris, who is the Census District Manager, on ☎ 01934 811591 or call the Census Helpline on ☎ 0845 3012001. Alternatively, visit the Census Website at www.statistics.gov.uk.

BLEADON CHURCH JUMBLE SALE
SATURDAY 17 MARCH

Please could you let us have items for the Bleadon Church Jumble Sale, which will be held at the Victoria Methodist Church on Saturday 17 March at 11 am. Anything that is saleable is welcome!

Clothes Kitchenware Bric-a-brac Tools Linen Books

We will make the very best possible use of what you give.

Please ring ☎ 01934 413034 for collection. Many thanks.

David and Sandra Lowton

"AT THE HEART OF BLEADON"

An Exhibition of Portraits by Warren Storey as a celebration of the millennium.

EASTER WEEK MONDAY 16 - SATURDAY 21 APRIL

NEW VILLAGE HALL 10.00 am - 5.00 pm

The village has every reason to be proud because it maintains a vitality and continues to demonstrate all that is best in the community. It is hoped that the exhibition will be accepted as a token of thanks to everyone who loves our village, including those not represented among the paintings which were all painted in a little more than a year. Any proceeds will be used to further community work through the Friends of St Peter and St Paul.



LET THERE BE LIGHT



"Well," said the Chairman of the Parish Council, "you can talk all night about this chandelier for the Village Hall, but I'm going to tell you what I think about it all.

There are three reasons why we shouldn't waste our money on such articles.

First, none of us can spell chandelier.

Second, I'll bet nobody in the village can play one.

And third, what we really want is more lighting in the Village Hall."

PSS



THE MENDIP CHALLENGE : YARDS AND ALE

For the past four years a team of unfit locals (I speak for myself!) have taken part in the Weston Hospice Care charity walk to swell the funds of our local hospice. The team from the Queen's Arms originally took part in the annual event in 1996 after the death of a well-known local, Joan Wall, wife of the late George Wall whose sons Nick and Adrian support this event. The hospice provides dedicated care and support to both the sufferers of terminal illnesses and their families.

The team has participated in this event for the past four years with the added success of being top fundraisers on each occasion, raising over £4000 in the year 2000. The walk takes place over the West Mendip way with a choice of 5, 10, 15, 20 or 30 miles. Most of the team manage the 10 mile walk and some have been known to complete the 30 miles - not me I hasten to add.

We start the day at the Queen's Arms at 8.00 am for English breakfast kindly provided by the landlords, Anita and Chris. A small fee is charged, some of which is donated to the worthy cause. We then make our way to Shute Shelve by coach and start the 10 mile walk, taking in beautiful scenery across the top of Wavering Down, then dropping down to the Forgotten World for refreshments, kindly supplied to us by the owner. We then continue through Loxton and up to the Roman Road, which eventually (as luck would have it) leads us back to the Queen's Arms, where it would be a shame not to sample the fine ales on offer! We then continue to the beach at Uphill, arriving around 3.00 pm where there is a warm welcome and yet more refreshments.

If you think you would enjoy a gentle stroll across the Mendips on a sunny June day raising funds for a very worthwhile cause and helping us to break this years target of £5000, please contact Helen Stafford, the team leader, on ☎ 01934 814298 (after 6.00 pm on weekdays and anytime over a weekend). If Helen is unable to answer there is an answerphone: Just leave your name and number and she will be glad to get back to you. The date for this years event is **Sunday 3 June**. Thank you for your support; let's make this year the biggest and best walk for the team yet!

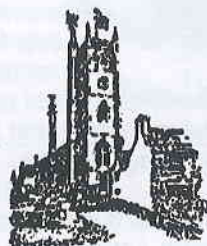
BLEADON CHURCH - PARISH MAGAZINE

Monthly 30p

News, views, reports,
times of and information about
Services and special events.

To get your copy, phone
Pete Williams on 812020.

Also obtainable from Bleadon Post Office

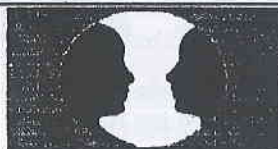


Ian and Leslie Sarginson

BLEADON POST OFFICE

Newsagents • Off Licence • Groceries
Bread • Milk • Toys • Hardware
Fruit • Vegetables • Cigarettes
Confectionary • Greetings Cards • Stationery

Tel: 812200



"You don't have to suffer in silence ..."

No matter what the problem is or how bad things may seem, sharing it with a professionally trained counsellor can make a difference and lead to a brighter future. Take the first step and telephone for a no charge, confidential, initial consultation.

Alan Robinson 01934 744123

"The future doesn't have to be the same as the past ..."

VILLAGE SURVEY



Firstly, a big "thank you" to the volunteers who distributed the questionnaires around Bleadon, and the 158 households who made the effort to answer our questions and offer their comments. That's a 41% response rate from the 380 households that were surveyed. Such a high return on a written survey would be considered excellent by any market researcher. It's usually considered good if you get more than 10%. However, I can't help but feel some disappointment that 59% of our villagers and Hall users chose not to express an opinion on our village facilities.

This was a real opportunity for residents to tell the Hall management committee and the Parish Council how they felt about community facilities, and what improvements they would like to see. Is it apathy or laziness? Maybe it's just a symptom of modern village life. I suspect that most of us are too busy living our lives to consider how we might make our lives a little better. At least it can't be said that we weren't asked! So we can't really complain if THEY don't get it right, can we?

Although there were no great surprises, some of the results of the survey are interesting and revealing:

As you might expect, the vast majority of respondents consider the post office, shop, church, bus service, halls and pub to be important or very important.

It is heartening to be told that 89% consider the public toilet important or very important. In the light of the possible future closure of the toilets by North Somerset Council it is important for the Parish Council to know how you feel.

78% consider street lighting important or very important. This is a rather more contentious issue, with some residents of the opinion that it spoils the rural nature of the village.

91% of residents consider the play area, flowers and trees to be important or very important to the village. This supports the policy of the current Parish Council in its bid to improve the play area and increase community planting throughout the village. Let's hope that soon our lovely village can once again be a contender in the regional Village in Bloom competition.



Survey respondents expressed huge support for the Coronation Halls. This is hardly surprising in view of the fact that over 95% of respondents have used the Halls within the last year. Most consider themselves to be regular users. It is nice to know that satisfaction levels are generally high. A huge majority of users would support a programme of improvements, even if it means greater financial support from the Parish Council.

Although the results of the survey have yet to be fully analysed, you can be sure that the Hall management committee and the Parish Council will work towards delivering or enabling as many of your suggested improvements as it can. In the meantime we will press on with applying for Lottery funding for a new roof. And who knows, with a little help we may get some of those other improvements and services you asked for under way.

Keith Pyke - (one of the THEY)



FRIENDS OF BLEADON CHURCH

MONDAY 7 MAY - MAY DAY FAYRE - 11.00 am - 4.00pm

The main event organised by 'The Friends' is the May Day Fayre which this year falls on 7 May. There will be all the usual attractions apart from 'The Cloggies' who are unable to be with us this year. The Church will be decorated with flowers and open throughout the Fayre. There will be an Art Exhibition in the Scout Hall on Sunday and Monday. If you are able to help in any way please contact Reyn Badger ☎ 811490 or Barbara Hartree.



Contacts (all the stalls urgently need items):

Bathroom/Fancy Goods	Patricia Drinkwater	☎ 813636
Books	Sue Court/Peter Williams	☎ 813343/☎ 812020
Bric-a-brac	Sandra Lowton	☎ 413034
Cakes	Leoni Rogers/Sara Osborne	☎ 811571/☎ 812974
Plants	Pat Davies	☎ 812858
Tombola	Jill Smith	☎ 812163
Bar and Refreshments	Bob and Mary Henley	☎ 812215
Fancy Dress	Charlotte House	☎ 815586

SUNDAY 13 MAY

There will be a cello concert in the Church on Sunday 13 May at 7.00 pm. The concert will be directed by Sara Lovell. Tickets are £4.00 and will be on sale nearer the time. The price includes a glass of wine. All who attended the concert arranged by Sara last year were very appreciative and we look forward to this one.



SATURDAY 2 JUNE

Another chance to are £2.00 and include



play 'BEETLE' at 2.30 pm in the Church Room. As before tickets a drink and cake.

SUNDAY 1 JULY

Several gardens will be on view again this year, one or two of the favourites and some new ones. Cream Teas will be available in one of the gardens and the day will draw to a close in the Rectory Gardens as we celebrate Song of Praise for the Patronal Festival. Tickets for the gardens will be on sale at the Post Office, from members of 'Friends' and from individual gardens on the day. Priced at £3.50 they include all entrance to all gardens and a Cream Tea.

SATURDAY 14 JULY - OPEN TOWER

This proved to be very popular last year so there will be another opportunity to view the surrounding countryside from the top of the tower. Cost as last year at £2.00 and refreshments will be on sale to help you revive, if necessary, and for those who keep you company.



SATURDAY 4 AUGUST - GARDEN PARTY

The Annual Garden Party will be held in the Rectory Garden. The format will be similar to previous years: stalls, games and entertainment. **NO ENTRY FEE.** Just come along and enjoy a pleasant afternoon with your friends. As always help on items to sell would be appreciated.

For further details of any of the events please contact Barbara Hartree ☎ 814812.

**THE BLEADON PLAYERS PRESENT
'THE BLUE GOOSE'**



a light hearted play set on the coast
and involving the occupants of a house
overlooking the sea
and the crew of a round-the-world sailing boat

**AT THE CORONATION HALL
THURSDAY 24 MAY
FRIDAY 25 MAY
SATURDAY 26 MAY**

**All performances start at 7.30 pm.
Tea and coffee is available as well as a licenced bar.**

**Tickets: Adults £4.00 Children £2.00
available from Bleadon Post Office from early May or from Sandie Kelly**

Visit our web site: www.bleadon-players.supanet.com

Sandie Kelly, Chairman, ☎ 01934 812419

STEPHEN & CO.

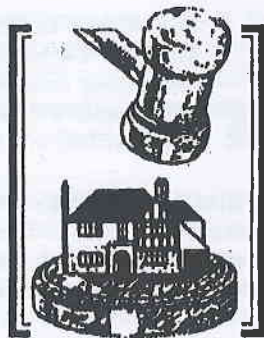
Chartered Surveyors

01934 - 621101

**Buying, Selling & Professional Advice
on all property matters**

**Chartered Valuation Surveyors
Auctioneers
Estate Agents**

**Next Town Hall
Weston-super-Mare BS23 1UP
Fax: (01934) 621519**



LIVEN UP YOUR LIVES WITH BLEADON FOLK DANCE CLUB

Welcome all dancers to 2001! Once again we meet on the **first Thursday and the third Thursday every month**, except during July and August. We would welcome more members of any age, dancers or non-dancers (we will teach you!)

If you live in Bleadon, most of you will know of John Tomlinson our caller for nearly twenty years. We have a variety of Folk, Playford and Squares throughout the year and a skittles evening, Fancy Hats, fish and chip supper and raffles for various charities.



It only costs £1.00 to be a member and £1.00 for each evening. Please come and try it: it's fun!

Jean Thorne ☎ 814007

BLEADON LADIES CLUB - SPRING 2001

A varied programme has been arranged for members during the coming months:

13 March	Cider Making	a talk by John Thatcher
10 April	Watercolours	a talk about traditional narrow boat art by Clem and Val Pryer
13 May	Buried Treasure	a talk by Alan Clegg

The club meets on the **second Tuesday each month** between 2.30 pm - 4.30 pm. We are always looking forward to welcoming new members, so why not come along for a chat and a 'cuppa' and the chance to make some new friends.

Barbara Pugh ☎ 814362

ELECTRICIAN

Steve Insley

WSM 812709 OFFICE
07971 413603 MOBILE



No Quotation Charge

No Call Out Charge

No Job Too Small

No Obligation - No VAT

HOUSEHOLD ELECTRICAL INSTALLATION WORK

* Security Lights - Extra Sockets - Shower Units - Telephone Extensions *

* New Fittings - Fuse Boards - Door Bells - Fault Finding .. Etc .. Etc. *

NEW SKILLS : RALEIGH INTERNATIONAL IN GHANA



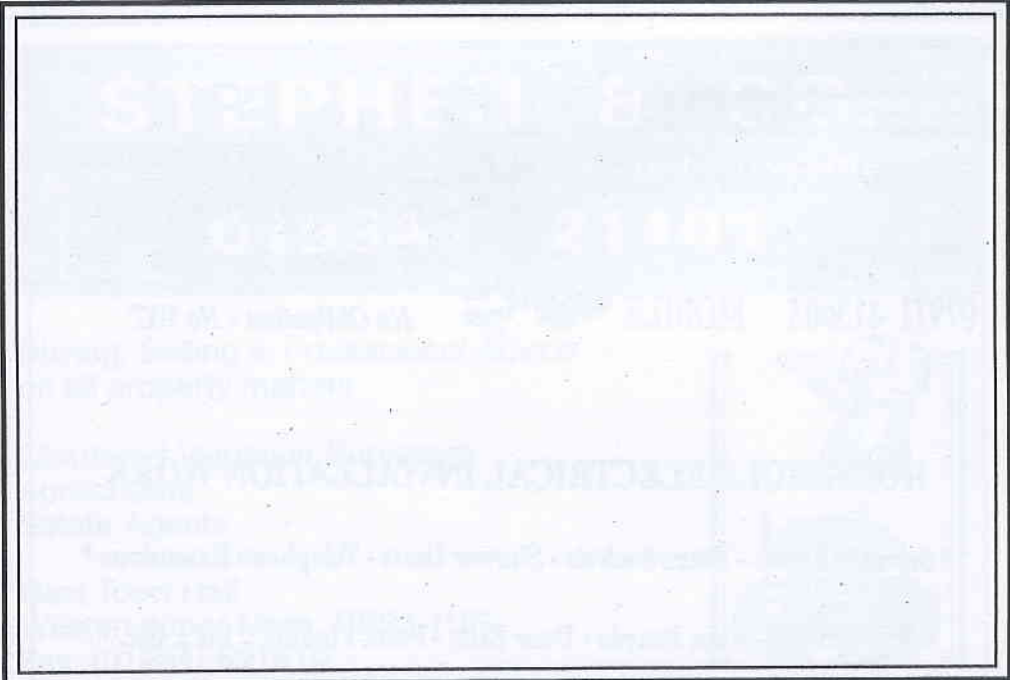
I should like to thank the Village Hall New Year Party committee for their generous donation of £100 towards the funding of the Raleigh International expedition to Ghana in which I shall be participating in October of this year.

As a venturer I shall be undertaking three days training in Britain and one week's orientation and training in Ghana before spending ten weeks working on three challenging, high quality projects. These projects take the form of community, environmental and adventure programmes.

The exact work each venturer will participate in is dependent upon which group they are assigned to. To give an indication of the type of project I shall be involved in, though, past expeditions have included primary school construction, demonstration latrine building and eye camps, amongst the community projects. Past environmental projects have included the construction of visitor centres and research stations inside the country's national parks and an elephant census; while adventure projects involve trekking and a six day canoeing phase on Lake Volta. All of this contributes to the aim of Raleigh International to give benefits to the locale as well as enabling the venturers to learn from their experience through acquiring new skills, building confidence and gaining an appreciation for other cultures.



Tim Osborne



ON TOP OF THE WORLD : BABY AND TODDLER GROUP



The arrival of the finer weather and lighter evenings is a great relief for all of us, but possibly greatest of all for those of us who have entertained young children indoors throughout the winter. It has been so wet that even ventures into the back garden have been few and far between, and there is only so much you can do with playdough, paint and glitter (and it's all very, very messy!!).

I took my first walk with the children last week, after a particularly bad morning: "Right, that's it. We're going for a walk!". My intention was to go to the end of the road and back to cool tempers, but they had other ideas and we were soon heading towards the footpath on South Hill. It made me realise how lucky we are in Bleadon in that most of us live practically around the corner from a good country walk: I promised myself to use the footpaths more often.

The tension fell from my shoulders and the childrens' mood turned to one of expectation and excitement - they were going to get to the top of the 'mountain', and what's more do it all by themselves (they're only three and one). It took a lot of effort, but they got there. At the top, the three year old turned around to see the view overlooking the village. Her eyes widened and she called to me, her voice shrill with excitement: "Mammy, I can see the whole world!" I smiled and she said, "Now I understand why people say it's so big". This was a special moment for us and I knew immediately that this was an anecdote to be repeated many times as she grows up.



So I, like many others, am looking forward to spring (despite the forecast for snow) when we can get out into the park after toddlers' group. Our numbers are just right at the moment because a lot of the older children have recently moved on, for one reason or another. We have been very busy since before Christmas and were reluctantly considering having two sessions a week instead of one. If you've just moved to the village, or have not visited us, we have lots of babies and very young children in the group at the moment, so it's a good time to pop your head in and see what you think.

VACANCY

**THE BABY AND TODDLER GROUP NEED A TEA PERSON
EVERY WEDNESDAY BETWEEN 10.30 am - 11.30 am**

WE ARE A FRIENDLY GROUP AND CAN PAY £5 PER SESSION

PLEASE CONTACT LUCY ON ☎ 813155

A LIST OF ORGANISATIONS WHICH REGULARLY USE THE CORONATION HALLS

MONDAY

2.00 pm - 5.00 pm	Bleadon Bridge Club	Mr D Gardner ☎ 812041
7.30 pm (1 st in month)	British Sugarcraft Guild (W-S-M)	Mrs E Lambert ☎ 01278 786586
7.30 pm (2 nd in month)	Parish Council	

TUESDAY

10.00 am - 12 noon (2 nd in month)	Bleadon Short Mat Bowling Club	Mr J Ward ☎ 812136
2.00 pm - 4.00 pm (1 st , 3 rd , 4 th in month)	Bleadon Short Mat Bowling Club	Mr J Ward ☎ 812136
2.00 pm - 4.00 pm (2 nd in month)	Bleadon Ladies Group	Mrs B Pugh ☎ 814362
6.00 pm - 7.30 pm	Brownies**	Mrs R Lang ☎ 750827
7.30 pm (1 st , 2 nd , 4 th , 5 th in month)	Bleadon Photographic Group	Mrs G Taylor ☎ 812475
7.30 pm (3 rd in month October/May)	Bleadon Horticultural Society	Mr C Cudlipp ☎ 813152

WEDNESDAY

10.00 am - 12 noon (2 nd and 4 th in month)	Infant Welfare Clinic & Toddler Group	Health Visitor at the Clinic
10.00 am - 12 noon (1 st , 3 rd , 5 th in month)	Toddler Group	T Harrington ☎ 814123
5.30 pm - 6.30 pm	Bleadon Beavers**	Paul Morris ☎ 751083 Jane Steel ☎ 629903
7.30 pm	Bleadon Players Rehearsals	Mrs S Kelly ☎ 812419

THURSDAY

11.00 am - 1 pm September - June	Watercolour Painting (Post Beginners)	Mrs K Panes W-S-M Tech College ☎ 411411
2.00 pm - 4.00 pm September - June	Watercolour Painting (Experienced)	Mrs K Panes W-S-M Tech College ☎ 411411
6.00 pm - 7.30 pm	Bleadon Cubs**	
8.00 pm 1 st , 4 th in month September - June	Bleadon Folk Dancing Club	Mrs J Thorne ☎ 814007

FRIDAY

2.00 pm - 4.00 pm	Bleadon Friendship Club	Mr J Diment ☎ 812217
7.00 pm September - May	Short Mat Bowling Club	Mr J Ward ☎ 812136
7.30 pm	Bleadon Scouts**	Mr H Boyce

SUNDAY

3.00 pm - 5.00 pm September - May	Short Mat Bowling Club	Mr J Ward ☎ 812136
-----------------------------------	------------------------	--------------------

**** in the New Hall. The Halls are available for hire by any private individual or organisation.
Enquiries to Mrs J Jones ☎ 812370**

KEEP OUR VILLAGE CLEAN! - FROM THE EDITOR

I have had more than one letter passed onto me regarding the fouling of the village pavements and the Churchyard by dogs. Here are a couple of them:

I find it most annoying that whilst walking through the village I have to avoid large amounts of "dogs' mess" on the pavements. As a dog owner myself I know it takes very little to go out prepared with a plastic glove or bag. So I say to you, the irresponsible ones, "please clean up after your dogs for all our sakes - you are giving us all a bad name". Name and address supplied.

and from the Countryman comes this plea:

Notice to all dogs! Will all dogs please keep their owners on leads and under control when walking through God's Holy Ground, namely the Churchyard. If your owners deposit something unsightly on the path or grass get them to remove it; better still take them to the adjacent fields before they have a chance to commit this unseemly and disrespectful act.



I think we can all agree with these sentiments - and while we think about tidying up that sort of mess why not think about removing litter where and whenever we see it, a little effort and our village could be so much tidier and so much more a pleasure to walk through. Your Parish Council is, after all, trying its best to make Bleadon an attractive place to live in and to visit by planting up the gardens and containers. So come on - do your bit if you can!!

BRIDGE GARAGE

(Prop: Peter Briffitt)

BLEADON VILLAGE

AT YOUR SERVICE

TELEPHONE: 01934 - 812206

WE AIM TO PUBLISH THIS MAGAZINE
FOUR TIMES A YEAR
IN MARCH, JUNE, SEPTEMBER AND DECEMBER.

However, any date-sensitive material should be sent
to the editors for inclusion well in advance
as we cannot guarantee a definite publication date.
The deadline for the next issue is Friday 18 May 2001.

A TIME BEFORE THE A370

At the time the A370 was being constructed (1929) I was born in what was then "The Bungalow" (now "Sunnycove") at the bottom of the lane behind Bridge Garage.



There was no mains sewerage or water in the village. We had a bucket in the toilet which was across the garden. Our water was pulled up from the well by a bucket on a rope (the well was covered by a board and large stones when not in use). There was a coal fire and cooking was done on an oil stove. Even lighting was a Tilley lamp or candles. We had a "Carp Whisker" wireless which was put in a basin to increase the sound - this was replaced later with a wireless which had a battery and an accumulator which had to be taken to the garage to be 'charged'.

Milk was delivered in the churn and poured into your jug. Billy Bavenstock, from Binds Bakery, always looked smart and delivered our bread in a wicker basket covered with a white cloth - lovely crusty cottage loaves. Mr Dammett with his beaky nose and trilby hat came every week in his little green van selling fresh fish and fruit. Mr Palk, the butcher from Uphill, came twice a week, as did our butcher, "Jack" (I never did hear his surname). He used to bring my knitting needles (two wooden hear skewers) and sometimes, if I had been good, he would take me for a ride delivering to Eastertown and Tannock!

Then there was the Insurance Man who came weekly on a bicycle. He would ride me around to Mrs Luscombe's shop for a penny bar of Nestlé's Chocolate. In the summer the ice cream man "Stop Me and Buy One" would call on his tricycle and bring water ices.



Our vegetables came from the garden - no fertilisers in those days. When eggs were plentiful they were preserved in Isinglass and used later for cooking. We had steamed sponge puddings and Spotted Dick cooked in a cloth. Food was kept in a "safe", which was wooden with a mesh door, on a marble slab to keep it cool. I don't think anyone ever died of food poisoning and I don't think Salmonella had been heard of!

The boiler had to be lit for hot water - we had a galvanised bungalow bath which was brought in on bath nights and put in front of the fire. On washing days there was a big block of soap, "Robin" starch and Bluebag and scrubbing brush! Things were put through a wringer which had big wooden rollers turned by a wheel. When the washing was dry it was brought in, sprinkled with water, folded and rolled (like a Swiss Roll!). Eventually the ironing was done with a flat iron, which was always either too hot or too cold.

There were never enough hours in the day. As children we played Hopscotch, Cat's Cradle, Five Stones, Hoops and Tops, we span buttons and "raced" snails up to the garden gate! We learnt to sew with a Bodkin, made cradles and dolls' houses out of shoe boxes and the furniture for the houses from match boxes and things from the garden. We had cotton reels with four nails in the top and did yards of French Knitting.



If the "hooter" went it meant the quarry was going to do some blasting so we had to get indoors. We had several stones land in the garden and even some on the roof!

Lots of happy memories and I have many more! Not many of us left now. Those who were born in Bleadon went to school in the village and still live here.

Sylvia Bird

Editor's Note: We hope to be publishing some old photos of Bleadon in the next issue. All contributions to the theme of historic Bleadon are welcome.

Qualified Chiropodist

Mrs. Victoria J. Jones

M.S.S.Ch. M.B.Ch.A.

Registered member of the British Chiropody & Podiatry Association

VISITING PRACTICE, BY APPOINTMENT

4 Whitegate Close
Bleadon
Weston-super-Marc

Tel: 01934 812134

Mobile: 0467 847331

MENDIP VALE LANDSCAPES

Established 1988

Fencing
Garden Design
Hard Landscaping
Fully Qualified Tree Surgeon

Tree Care
Tree Removal
Site Clearance

☎ Jon Kingcott 01934 814665

Mobile 07767 250215



AdminWorld

CHECK OUT THE WEB SITE : www.adminworld.co.uk

For all your typing and secretarial needs including:

Letters CVs Menus Booklets Data Entry

Don't delay! Contact 01458 850657 phone/fax

Or e-mail enquiries@adminworld.co.uk

NEW YEAR'S EVE PARTY - 2000/2001

Old and young enjoyed another great New Years Party in the Coronation Hall. The fun started at 9.00 pm; we had hot dogs during the evening and free bubbly at midnight. The dance floor was 'bouncing' well into the 'wee' small hours!!



A profit of £250 was made this year which was donated as follows:

£50 to the Coronation Hall

Cleaning equipment has been purchased to help keep the hall to the standards we all expect.

£100 to the Scout Hall

A photograph of Founder Lord Baden Powell will be purchased for the group, together with a new Hoover for the hall.

£100 to Tim Osborne

As many of you know (and if you don't you can read about it in this issue of Bleadon News), Tim has been accepted for Raleigh International and will be off to Ghana in October. Tim has to raise £3200 for Raleigh work as his contribution and is very appreciative of every pound donated to him. We wish him all the best with his adventures.

Thank you to all who supported us.

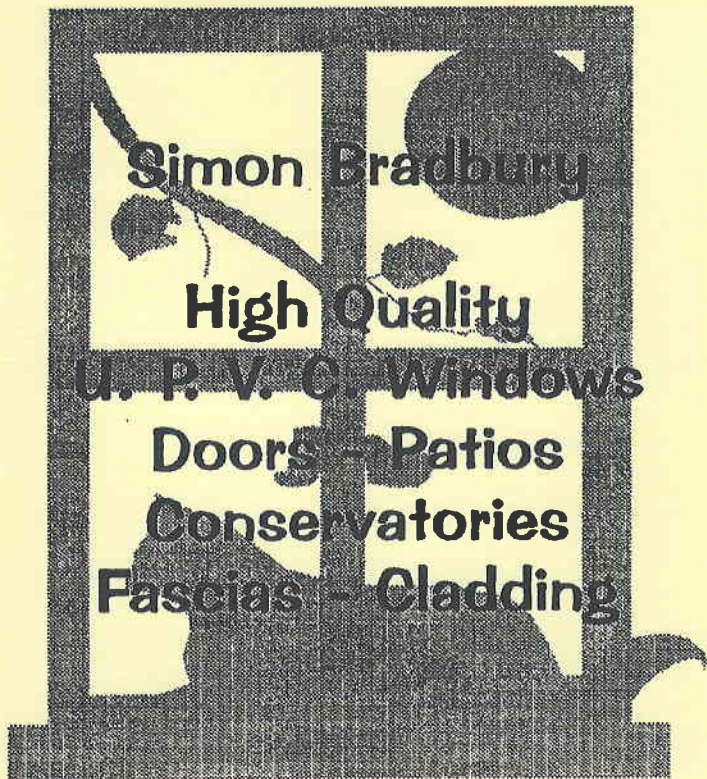
Betty Paterson - on behalf of the Entertainments Committee

FORTHCOMING EVENTS IN THE CORONATION HALLS PLEASE MAKE A NOTE IN YOUR DIARY!

Monday 12 March	7.30 pm	Parish Council
Saturday 17 March	9.00 am - 5.00 pm	SPRING FLOWER SHOW Bleadon Horticultural Society
Monday 9 April	7.30 pm	Parish Council
Sunday 15 April	Art Exhibition - New Hall	Portraits for the Millennium - Warren Storey
Saturday 21 April	Art Exhibition - New Hall	Portraits for the Millennium - Warren Storey
Saturday 21 April	Coffee Morning	Friendship Club
Saturday 21 April	7.30 pm	Quiz - Bleadon Church
Thursday 3 May	(to be confirmed)	General Election - New Hall
Sunday 6 May	Art Exhibition - New Hall	Local Artists - Bleadon Church
Monday 7 May	Art Exhibition - New Hall	Local Artists - Bleadon Church
Monday 7 May	10.00 am - 5.00 pm	MAY FAYRE
Monday 14 May	7.30 pm	Parish Council
Thursday 24 May	7.30 pm	Performance - Bleadon Players
Friday 25 May	7.30 pm	Performance - Bleadon Players
Saturday 26 May	7.30 pm	Performance - Bleadon Players
Monday 11 June	7.30 pm	Parish Council
Monday 9 July	7.30 pm	Parish Council

Your Local Friendly Village Company

Plastech Windows



Simon Bradbury

High Quality

U. P. V. C. Windows

Doors - Patios

Conservatories

Fascias - Cladding

Tel: Bleadon 814500

Mobile: 0374 475376



SOMERSET FASCIAS

MAINTENANCE FREE UVPC

FREE QUOTATIONS

**ALL INSTALLATIONS
& MATERIALS FULLY
GUARANTEED**

*** COMPETITIVE PRICES *
* QUALITY WORKMANSHIP *
* PRICES ON REQUEST ***

*** FASCIA BOARDS & SOFFITS *
* GUTTERS & FOWNPIPES *
* ALL TYPES OF CLADDING *
* TIMBER REPLACEMENTS *
* ROOFING REPAIRS ***

Tel: 01934 628793

Mobile: 0410 727595

Tel: 01934 510117

Mobile: 0411 919873

CFG ROOF/HOUSE CHECK

Tel: 01934 644430

Fax: 01934 643267

Weston Business Park, Unit 14b

The Airport

Weston-Super-Mare

North Somerset

BS24 8RA

**ROOFING • PVC-U REPLACEMENT SPECIALIST
HOUSE MAINTENANCE • ALTERATIONS • DECORATING**

Mark Howe

offers a Friendly, Reliable Service for

GRASS AND HEDGE CUTTING • TURF LAYING

ERECTION AND CREOSOTING OF FENCES AND GATES

PATIO, CHIPPING and PATH LAYING

TREES AND SHRUBS TRIMMED • DOMESTIC ROTAVATING

also: PATIOS AND DRIVES PRESSURE-WASHED

01934 413594

(with answerphone)

Edited by Penny Robinson (1 The Veale) and Steve Miles (16 The Veale).

Published by Bleadon Parish Council, Bleadon, North Somerset.

Unless otherwise stated, the opinions and comments expressed in this newsletter are those of the contributor and not Bleadon Parish Council. Cover by John Hickley.

Produced by AdminWorld ☐ 01458 850657 or e-mail 'enquiries@adminworld.co.uk'.