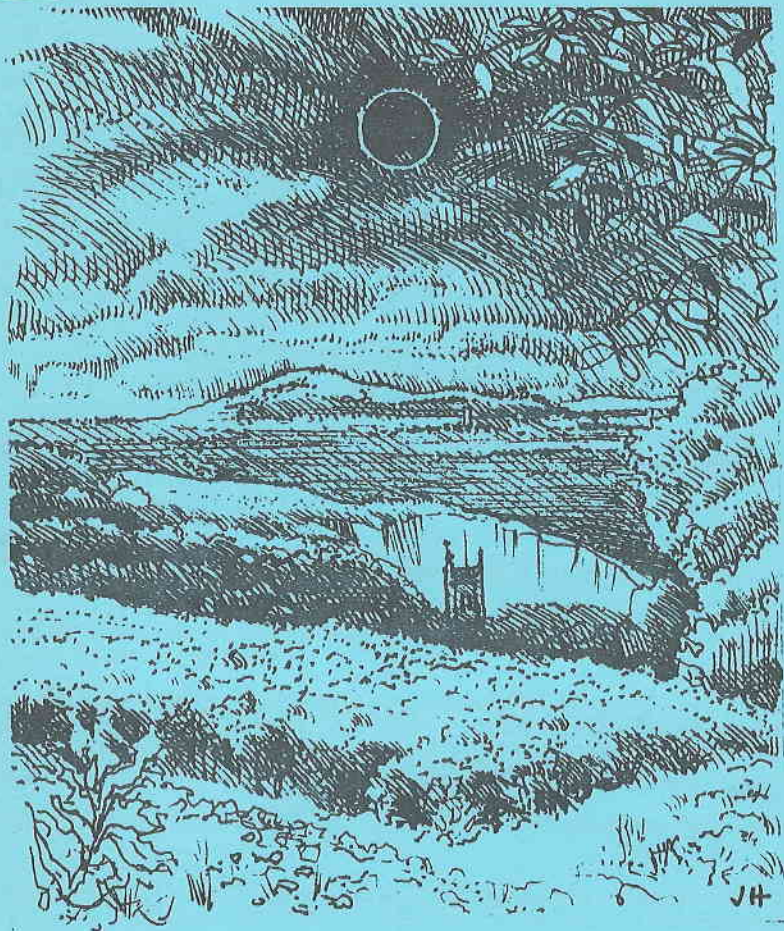
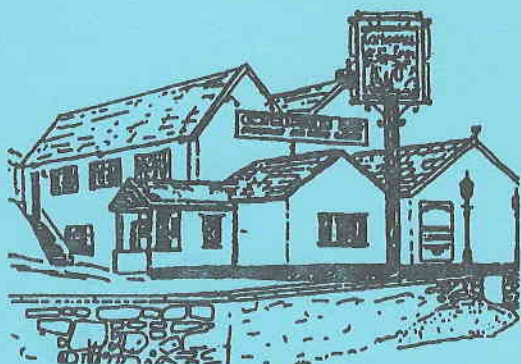


# BLEADON



VILLAGE NEWS 42

# CATHERINE'S INN



Bleadon Road, Bleadon  
Tel: 01934 812275

Open for Food and Drink  
7 Days a Week  
12pm to 10pm

Extensive Menu  
and Homemade Specials

Children's Menu and Indoor Play Area

---

# BLEADON VILLAGE NEWS

NO. 42

SEPTEMBER 1999

## BLEADON PARISH COUNCIL

**IN MAY 1999, A NEW COUNCIL WAS ELECTED IN THIS PARISH AND WE HOPE THAT IN THE NEXT FOUR YEARS WE WILL SERVE YOU IN EVERY WAY POSSIBLE. TO THAT END, IF ANY OF YOU, THE PARISHIONERS OF BLEADON, HAVE A PROBLEM WHICH YOU CONSIDER TO BE OF IMPORTANCE, WE WILL DO OUR BEST TO HELP.**

**PETER SMART (Chairman) Hillside Cottage, Shiplate Road, Bleadon. Tel. 812849**

**IVAN COTTRELL (Vice-Chairman) Tor View Cottage, Shiplate Road. Tel. 813665**

**LEN CHAMBERLAIN, Newbay Cottage, 21 Coronation Road, Bleadon. Tel. 814517**

**RAY HICKS, Fiddler's View, Hillcote, Bleadon Hill, WSM. Tel. 811993**

**MALCOLM PERRY, Westfield, 1 The Barton, Bleadon. Tel. 813940**

**PENNY ROBINSON, 1 The Veale, Shiplate Road, Bleadon. Tel. 814142**

**PENNY SKELLEY, Mendip Croft, Celtic Way, Bleadon. Tel. 815331**

**MARY SHEPPARD, Littlewood, Bridgwater Road, Lympsham. Tel. 812921**

**KEITH PIKE, 8 Whitegate Close, Bleadon. Tel. 813127**

The PARISH CLERK to whom all correspondence should be addressed is:  
**BRUCE POOLE, 10 SOUTH STREET, BURNHAM ON SEA. Tel. 01278 787555**

The Council meets on the 2nd Monday of the month at 7.30 p.m. in the Coronation Hall. Anyone who wishes may attend these meetings, and there is an opportunity at the end of the business agenda for comments and questions from the public.



## CHAIRMAN'S REPORT - FIRST QUARTER

The new Bleadon Parish Council has now completed three months in office and it has been a steep learning curve for all the new members.

There were a few loose ends to clear up from the past administration and lots of new ideas for Village improvements but, as with all things, the 'wheels grind very slowly'. Some of you will have seen activity in the centre of the village regarding drains and gullies. After heavy rain, the waters from Celtic Way and Shiplate Road meet in one drainpipe! Hard to believe isn't it? No wonder the system can't cope!

Now, after a couple of site meetings, North Somerset Council are progressing towards a solution to the problem.

We are aiming to improve both the safety and the facilities of the children's playground; already we have replaced the sand in the play pit with the 'child friendly' variety, and we hope that the parents of those who use it will help to keep it clean and sanitary. We, for our part, will do the same. Any suggestions from the public about future improvements will be welcomed.

As you know, North Somerset have agreed to a long overdue speed limit through the village, to a weight restriction, and to a long vehicle restriction, which will prevent all coaches carrying more than twelve passengers from negotiating our very dangerous corner by the Queen's. Of course, vehicles with legitimate reasons for access will still be allowed.

---

With the assistance of Nicky Williams, a liaison officer from N. Somerset, a traveller was moved from the lay-by in Roman Road, and we are currently arranging to register ownership of both lay-bys in that area.

Wonderstone Quarry is now up for sale by sealed tender. The closing date is the 30th of September, so any prospective purchasers out there need to get their bids in before that date. The allotments that were in such a bad state have now been cleared and await the 'green-fingered' villagers out there who are just dying to grow their own organic veg. Do you know that in Bristol they are queuing up for the right to rent an allotment? Why waste a golden opportunity on your very own doorstep? Contact a councillor if you are interested.

AND FINALLY, FOR ALL THOSE WHO TRIED TO HELP US FIND THE STOPCOCK IN THE CHURCHYARD: with the help of Wessex Water it has been located. So the tap drips no more - we hope!

*Peter Smart, Chairman  
Bleadon Parish Council*

### **GEORGE WALL**

In the last issue of the Bleadon News, I spoke of the retirement of George Wall from the Parish Council after 23 years of loyal service to our community.

It is with great sadness that I now have to report his passing.

I had not had the privilege to know George for very long, but in the short time that I had known him, he was kind and generous in his support for me as a new member of the Parish Council. Indeed, one of his final acts was to accompany me around the village so that I was aware of "all the Open Spaces". He was not well that day but nevertheless he found the time and energy to show me "the ropes".

George had farmed in Bleadon all his life and he knew the village like no other. A fellow Councillor said, "he was a tower of strength, a Bleadon resident through and through". As the longest serving member of the Council he did a lot for the village, and will be sadly missed.

I know I speak for all of Bleadon when I say "REST IN PEACE GEORGE".

*P.R.*

### **CORONATION HALL**

The exterior redecoration of the Hall has now been completed and replacement uPVC windows fitted to the west side.

The cooker in the kitchen is now over twenty years old and spare parts difficult to obtain. We are looking into the possibility of getting a reconditioned catering cooker within the next month or so.

The 'Strawberry Fayre' held in July was well attended and enjoyed by all. £124 was raised for Hall funds and we hope to make this an annual event.

Make Saturday December 4th a date in your diary as this will be the Christmas Coffee Morning with mince pies to enjoy with friends and family.

There will be various stalls as well as a bring and buy, raffle and Christmas music.

This is always a popular event and a great way to 'Warm up' for the seasonal festivities.

*L.J. Chamberlain, Chairman*

## VILLAGE COLOUR INSIDE THE HALL

Mr. & Mrs. Hickley are busy painting a mural depicting Village Scenes on the walls of the Hall Entrance. It is taking many hours of patient work and we look forward to its completion.

*W.J.C.*

### FORTHCOMING EVENTS IN THE CORONATION HALLS

Please make a note in your diary!

|                                       |                                 |                              |
|---------------------------------------|---------------------------------|------------------------------|
| Saturday 4th September<br>2-4pm       | Autumn Show                     | Horticultural Society        |
| Monday 13th September<br>7.30pm       | Parish Council Meeting          |                              |
| Friday 17th September<br>7.30pm       | Play                            | Bleadon Players              |
| Saturday 18th September<br>7.30pm     | Play                            | Bleadon Players              |
| Sunday 3rd October                    | Harvest Lunch**                 | Bleadon P.C.C.               |
| Monday 11th October<br>7.30pm         | Parish Council Meeting          |                              |
| Saturday 16th October<br>7.30pm       | Dance                           | Bleadon P.C.C.               |
| Monday 18th October<br>7.30pm         | Local Councils' Liaison Meeting | North Somerset Council       |
| Monday 8th November<br>7.30pm         | Parish Council Meeting          |                              |
| Saturday 20th November<br>10.30am     | Coffee Morning                  | Friendship Club              |
| Saturday 20th November<br>7.30pm      | Quiz in aid of CLIC             | Mrs. Pat Dain                |
| Saturday 4th December<br>10am - noon  | <b>Christmas Fair!</b>          | Coronation Hall              |
| Sunday 12th December                  | Christingle Party**             | Bleadon P.C.C.               |
| Monday 13th December<br>7.30pm        | Parish Council Meeting          |                              |
| Monday 20th December<br>7.30pm        | Christmas Concert               | Bleadon Players              |
| Friday 31st December<br>7.30-midnight | Bleadon Millennium Party        | Mrs. B. Patterson and others |

# ELECTRICIAN

**Steve Insley**

WSM 812709  
07971 413603

OFFICE  
MOBILE



*No Quotation Charge*

*No Call Out Charge*

*No Job Too Small*

*No Obligation - No VAT*

## Household Electrical Installation Work

\* Security Lights - Extra Sockets - Shower Units - Telephone Extensions \*

\* New Fittings - Fuse Boards - Door Bells - Fault Finding .. Etc .. Etc. \*



## PERSONAL ESTATE PLANNING

*Sandra Kelly*

**Licensed Will Consultant**

*It costs you to make a will. It costs your estate much more if you don't*

Consultations in your own home

Telephone 812419

**PEP Legal Services, Crown House, 1 Stafford Place, Weston-super-Mare**

# STEPHEN & CO.

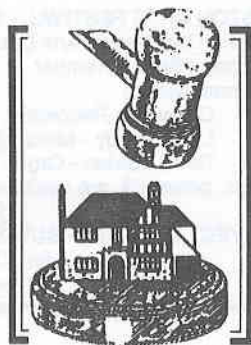
Chartered Surveyors

01934 - 621101

Buying, Selling & Professional Advice  
on all property matters

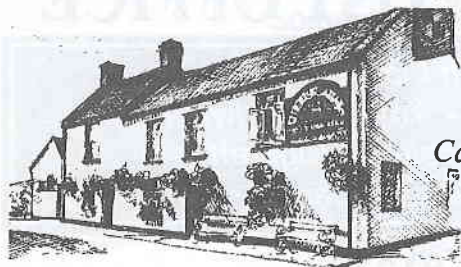
Chartered Valuation Surveyors  
Auctioneers  
Estate Agents

Next Town Hall  
Weston-super-Mare BS23 1UP  
Fax: (01934) 621519



## THE QUEEN'S ARMS

*Traditional Village Pub*



*Real Ales from the Cask  
Lunches and Evening Meals  
Menu and Specials Board  
Catering for Private Functions  
Skittle Alley  
Open All Day*

## CHURCH OF ST. PETER AND ST. PAUL, BLEADON

### RECTORY GARDEN PARTY - SATURDAY 24th JULY

This year the sun shone. The refreshment area was very popular, where a steady supply of cream teas and drinks was enjoyed. Numbers were down slightly but everyone appeared to enjoy the afternoon and £395 was raised for Church funds. Very many thanks to all who contributed to make this a successful afternoon.

### CREAM TEAS - SUNDAY 8th AUGUST

Variable weather conditions caused some anxiety, but although umbrellas had to be opened for a couple of showers, on the whole it was a dry afternoon. After everything had been packed away the skies opened and it poured and poured with rain. £213 was raised. Again, many thanks to all involved and especially to those who supported the event by their presence.

### WESTON ARTS FESTIVAL - SATURDAY 25th SEPTEMBER

As part of the Weston Arts Council Programme of Events, Bleadon Church will be hosting a Concert on Saturday 25th September. A varied programme has been arranged from Lloyd Webber to Opera. Performances by:

Clarendon Recorders.  
Luisa Puddy - Mezzo Soprano  
David Lowton - Organ.

Tickets, priced £3, are available from Bleadon Post Office or by phoning 413034 or 811490.

### HARVEST FESTIVAL - SUNDAY 3rd OCTOBER

8.00am Holy Communion (1662 P.Bk)  
11.00am Harvest Festival Family Service  
6.30pm Harvest Hymns of Praise

Harvest Lunch will follow the 11.00am Service and will be held in the Scout Hall. Tickets, £4 Adults, £3 Children, are available at the Post Office or from members of the Friends Committee. Bring your own wine or soft drinks.

### BARN DANCE - SATURDAY 16th OCTOBER

A Barn Dance will be held on Saturday 16th October in the Coronation Hall. 7.30 p.m. - 11.30 p.m. Band 'Home Brew'. Caller John Thomlinson.

Licensed Bar - American Supper Tickets - £3 available from the Post Office or from members of Friends Committee.

Barbara Hartree 814812

Glenise and Les Masters

## BLEADON POST OFFICE

*Newsagents • Off Licence • Groceries  
Bread • Milk • Toys • Hardware  
Fruit • Vegetables • Cigarettes  
Confectionary • Greetings Cards • Stationery*

**Tel: 812200**





# H. Pitman & Sons

## *Funeral Directors*

- Our Experience is Your Assurance
- Offering a Personal and Sympathetic Service
- 24 Hour Service
- Prepaid Funeral Plans
- Private Chapel of Rest
- Home Visits

**Funeral to Suit all Budgets**

*For Immediate Service*

**Telephone: 01934 622738**

40 Milton Road, Weston-super-Mare

## WATERHOUSE ELECTRICAL SERVICES

Commercial • Domestic • Industrial Installations  
Boiler/Steam • Control Panel • E S H Specialists

Kozy-kot, Shiplate Road, Bleadon  
Somerset BS24 0NG



Tel/Fax  
**01934 813803**

Mobile  
**0860 597463**

National Inspection Council for  
Electrical Installation Contracting

**NICEIC**  
APPROVED CONTRACTOR

## CHURCH OF ST. PETER & ST. PAUL, BLEADON (Cont.)

### HARVEST FESTIVAL

As usual, Harvest Festival will be on the first Sunday of October - Sunday 3rd. Harvest gifts for decorating the Church may be brought to the Church on Friday 1st. Other gifts - mainly tinned, please, for easier distribution to needy people - may be presented during Services, especially the Family Service at 11.00am. Services that day are:

|         |   |
|---------|---|
| 8.00am  | Holy Communion 1662 (for Trinity 18)    |
| 11.00am | HARVEST FESTIVAL FAMILY SERVICE         |
| 6.30pm  | Harvest Hymns of Praise (with requests) |

### COMMEMORATION OF ALL SOULS - EVENSONG - 6.30 p.m. - SUNDAY NOVEMBER 7th

Evening Worship on November 7th will include an Act of Remembrance, by name, of those we know from, or connected with, this Parish who have died during the past year. Additionally, I would welcome other names of your loved ones who have died at any time and these will be commemorated also. Please let me have these names in writing please or by way of the clipboard in Church.

### REMEMBRANCE SUNDAY - NOVEMBER 14th

The Season of Remembrance continues with our traditional Act of Remembrance during the Sung Eucharist at 10.15am on November 14th. There will be traditional prayers and readings, presentation of wreaths and two minutes silence at 11am.

### ADVENT CAROLS

Advent begins on Sunday 28th November and there will be our Annual Advent Carol Service with special choral music at 6.30pm.

*David Parkinson  
Rector. Tel. 812297*

*Weston-super-Mare Arts Festival*

**St. Peter and St. Paul, BLEADON**

## CONCERT

**Saturday 25 September 1999 at 7.30pm**

*Clarendon Recorders  
Luisa Puddy - Mezzo Soprano  
David Lowton - Organ*

Lloyd Webber to Opera  
Baroque to Mendelssohn  
Traditional to Greek Dances

Tickets £3 from Bleadon Post Office, or ring 811490, or at the door.

PLEASE COME AND BRING YOUR FRIENDS

---

## **RUBBISH: Don't be a sinner, be a binner!**

Over the past few weeks, several people have brought to my notice the fact that as soon as we eliminate one load of rubbish from the village, another lot appears somewhere else. We acquired a trailer in the car park that was 'recycled' in the best possible way, only to find that it had been replaced by a pile of DIY left overs! Fly tipping seems to be occurring with great regularity on the verges around the village, especially those as you leave Bleadon via Shiplate Road, and also along Roman Road in the lay-bys. There has also been a complaint that the newly cleared allotments have been utilised for the dumping of garden waste - in preparation for a compost heap I hope!

The Parish Council would respectfully remind residents that we have an excellent refuse collection service and an amenity site at Hutton Moor which caters for the removal or recycling of just about every type of household waste you could think of.

If you did not receive the RECYCLING HANDBOOK, outlining how to deal with your problem waste, then contact the Town Hall for your copy now. It is an invaluable booklet, full of useful telephone numbers, as well as helpful hints on how to recycle almost everything: and yes, that does include the kitchen sink!

*Penny Robinson*

## **BLEADON CRICKET TEAM**

The Bleadon cricket season came to a close on Saturday August 15th when Bleadon Allsorts took on Lympsham Allsorts in the annual Shield Challenge match.

Bleadon lost the toss and fielded first with Crispin Rose from Rockville taking a remarkable six wickets for only fourteen runs. Tim Osborne from Birchwood Avenue took two wickets for eighteen runs and Mark Roberts and Herbie Godfrey from Loxton mopped up the tail-enders.

In reply, Bleadon lost only the wicket of Keith Mann whilst overtaking Lympsham's total, winning by ten wickets. Jason Parsons and Phil Dean were the not-out batsmen.

Bleadon were due to play six Sunday matches against Lympsham this Summer but unfortunately, due to the weather, only managed four. Bleadon won the first by six runs and Lympsham equalled the series by winning the second very convincingly. Bleadon fought hard in the third and fourth games, winning both, and taking the series for a second year by three games to one.

The midweek league team, comprising of combined Bleadon and Lympsham players, had a very good first season under the name the "Allsorts", finishing just below the middle of the third division. Everybody learned a lot from this competitive league experience and our performance should be even better next year.

Finally, as Captain for Bleadon this Summer, I would like to thank all the players for their professionalism and good humour. It was a pleasure to run such an enthusiastic side and I am looking forward to the Summer of 2000 when we hope to improve on our performances.

*Steve Webber*  
814204

---

## **MENDIP CHALLENGE WALK - WELL DONE THE QUEEN'S TEAM**

The annual walk in aid of Weston Hospicecare again raised a goodly some of money and it is hoped that there will be enough soon to pay for a Consultant to be available five days a week. For the third year running the Queens Arms team raised the most money with a total of £2668. Great walking, and thanks for the support.

*Chris and Anita*

## **BLEADON FOLK DANCE CLUB**

The club meets every 1st and 4th Thursday in the month, from 8 p.m. to 10pm in the Coronation Hall. Everyone is welcome, Dancers and Non-Dancers alike. We will make you very welcome.

Caller: John Thomlinson. Enquiries: Jean Thorne 814007

## **THE SPIRIT OF THE VILLAGE: CONTACTUS**

I was very recently asked "Does the Contactus organisation still exist?" The answer is, very much so, despite the fact that we have not been very much in the news lately. It just happens that we have received very few requests for the various kinds of help that we are able to offer, but we have been as busy as ever in our main function of welcoming newcomers to our parish of Bleadon, which includes the greater part of Bleadon Hill.

We are currently in the process of revising the format of our "Welcome Pack" with a view to improving and updating the information they contain. It may be necessary to ask some of our more recent newcomers to wait a little while for a pack until our new batch is ready.

If by any chance you who are reading this are very new to Bleadon and have not yet been welcomed by a Contactus committee member, please be kind enough to accept our apologies and to let us know you are here by ringing Mary and Philip Ashley on 812667 or me on 812436. We do not always see, or are not always informed about, the change of occupancy of properties not on a through road. May I therefore appeal to you all to give one of us a ring when you become aware of newcomers close to you. This help really would be greatly appreciated.

Unfortunately, several of our committee members have been seriously ill in recent months and this, together with folk away on holiday, has interrupted our pattern of meetings. We plan, however, to have a meeting next month at which we hope to welcome three or four new members. To those who may still not have recovered sufficiently to be with us we extend our most sincere sympathy and warmest wishes for a speedy and complete recovery.

May I strongly recommend to everyone newly in our midst the very wide range of clubs, societies and other village activities. You have come to the friendliest, most caring village in England as you will quickly learn when you join in these various aspects of our social life.

We look forward to seeing you often when our Autumn/Winter programme of events starts very soon.

*John Thomlinson (Chairman) 812436*

## MAY THE FORCES BE WITH YOU WHAT IS SSAFA FORCES HELP?

The Soldiers, Sailors, Airmen and Families Association - Forces Help. A rather long-winded title, but it describes exactly what this organisation does; it helps Service and ex-Servicemen, women and their families. Just one day's service will be enough to qualify.

Sometimes just a visit, a chat to someone with a sympathetic ear and an understanding of Service life is all that is required. Other people may need a 'guiding hand' in their dealings with Local Authorities, Public Utilities, War Pension Agencies or other bodies. Help may be needed after bereavement. Wives of Servicemen may need support when the husband is serving abroad or if a marriage gets into difficulty.

Often the problem is a financial one, when an individual or a family do not have the means to pay for some important item which cannot be obtained from public source funds. In these cases, SSAFA Forces Help works with the individuals and puts their case to an appropriate charity, very often one of the Service charities. Typical of the types of help obtained for recent cases, depending on their means, are:

- Payment of public utilities and accommodation charges
- Removal expenses
- Essential Repair Costs
- Respite holiday
- New spectacles
- Purchase or loan of wheelchair
- Installation of a stair-lift
- Payment of a small annuity

You will see that SSAFA Forces Help caters for a variety of needs. The Association, which was formed in 1885, can today give help anywhere in the country using its network of over 7000 volunteers. Each year, some 90,000 cases are dealt with and over £10m disbursed in grants. In this village, many of our elderly people were in the Services themselves or are perhaps the widows of ex-Servicemen, and could therefore qualify for help.

If you would like more information or advice on SSAFA Forces Help, call Penny Skelley on 815331.

## BLEADON CHURCH - PARISH MAGAZINE

Monthly 30p

News, views, reports,  
times of and information about  
Services and special events.

*To get your copy, phone  
Pete Williams on 812020.*

*Also obtainable from Bleadon Post Office*



# *Qualified Chiropodist*

**Mrs. Victoria J. Jones**

*M.S.S.Ch. M.B.CH.A.*

*Registered member of the British Chiropody & Podiatry Association*

**VISITING PRACTICE, BY APPOINTMENT**

4 Whitegate Close  
Bleadon  
Weston-super-Mare

Tel: 01934 812134  
Mobile: 0467 847331

# **Victoria Cottage**



**BEAUTY TREATMENTS**

Qualified Beauty Therapist

Mrs. Gail Crispin, Victoria Cottage, Bridge Road, Bleadon, North Somerset BS24 0AU  
Tel: 01934 814719

**SELF-DRIVE**

# **CAR HIRE**

**TONY MOORE - PURN HOUSE FARM**

1.3 and 1.6 litre modern

**SALOONS and HATCHBACKS**

◆ ◆ Tel: Bleadon 812324 ◆ ◆

## QUIZ CORNER : NUMBERS

All the answers in this puzzle are numbers.

APOSTLES .....

BATTLE OF HASTINGS .....

WONDERS OF THE WORLD .....

ELI'S CORONATION .....

GOSPELS .....

ALPHABET .....

SILVER WEDDING .....

GEORGE ORWELL BOOK .....

SNOOKER MAXIMUM .....

STEPS .....

MAGNA CARTA .....

CATS' LIVES .....

BAKED BLACKBIRDS .....

NUMBER OF THE BEAST .....

OLYMPIC RINGS .....

START OF WW1 .....

PLANETS .....

OVERTURE .....

RAINBOW COLOURS .....

UNLUCKY FOR SOME .....

TOP DARTS SCORE .....

TURTLE DOVES .....

TOTAL =

Whichever way you look at it, it's always the same!

---

## WHERE ARE THE KANGAROOS?

In the Spring of this year I was fortunate enough to be able to visit Australia staying with a veterinary colleague in Canberra. I had been assured that all manner of wildlife, and especially kangaroos, were to be found in and around Australia's Capital State. It was, then, with great anticipation that I arrived on that March day, eager to see my first marsupial in the flesh.

Imagine my disappointment that wherever I went there were no kangaroos to be seen. My host was also in despair: he continually encouraged me with such comments as 'we shall see them on the golf course' or 'they are always on that hill over there'. But did we see them? NO!

It took a visit to a nature reserve for me to see all I wanted to of Australian wildlife. At Tidbinbilla, there was a surfeit of real Australia; red and grey kangaroos, koalas high in the gum trees, and parrots of every hue imaginable, all in their natural habitats. Here was everything I had come to see and more!

After that it seemed that the spell was broken. There were 'roos to be seen, if you just knew where to look, like the morning we were out early on the golf course. There they were, along with the kookaburras, and the gaudy king parrots - it was a photo opportunity not to be missed!

Before my return home I did see a great deal more of the Australian flora and fauna, and of course I saw the sights of Sydney, some lovely surfing beaches, and the unforgettable Blue mountains. However, my most abiding memory is that of seeing my first truly wild kangaroo, complete with 'joey' in a pouch!

*Penny Robinson*

## WINNING WAYS: BLEADON SHORT MAT BOWLING CLUB

My apologies for the lack of an article in the last edition of the "Village News". Unfortunately the deadline for copy coincided with the bank holiday and with other commitments so that I couldn't quite manage it. This extended report should bring you up to date with all the relevant news.

Toward the end of March a total of twenty-eight club members and friends spent another enjoyable weekend at the Bishop's Court Hotel in Torquay. This was our third successive year there, where we have the chance to bowl on full length indoor rinks.

In May we had 100% support from members for making a donation from club funds to the Coronation Hall. As a result we were able to donate £500 to help with their considerable plans and expenditure commitments designed to maintain and improve the hall for the benefit of all hall users.

I am pleased to record that our club won the Woodspring Short Mat Bowls League for the 1998/99 Season. This year's result is the third time we have won in the seven years existence of the League and we were runners up on another occasion. This year the result set a new "high" with 14 matches won and 2 lost, to give a total points score of 113 compared with the runners up score of 80.

As usual we closed down the club's bowling activities at the end of May for the summer season and will be reopening for the 1999/2000 season on Friday 1st October. We have, however, held some social activities over the summer period. A small group of members joined in a most pleasant June evening cruise in the Bristol Channel on the paddle steamer "Waverley". Most of the club attended a skittles and supper evening at the Red Cow in Brent Knoll during July and voted the evening a great success. At the time of writing we are looking forward to our annual barbecue evening at Joan Diment's farm, due on Friday 20th August.



---

Our Annual General Meeting will be held on Friday, the 8th October 1999. Please make every effort to attend because it is your opportunity to express your feelings about what the club is doing, be it right or wrong. It is also the time when you elect your management committee for the coming year and it would be nice to see some new faces offering their services. Remember, some of us having been doing the job for 10 years now.

We anticipate having vacancies for some new members this next season. Interested persons will be welcome to come along and see us any Friday evening, from 7.00pm, onwards, or Sunday afternoons from 3.00pm. Our playing venue is, of course, the Coronation Hall and to try your hand at the game, you do not need anything other than a pair of totally flat bottomed shoes or slippers.

*John Ward 812136*

### **CAKES AND CONVERSATION: BLEADON LADIES CLUB**

Over the past few months Bleadon Ladies Club have gathered to enjoy a variety of talks, tea and conversation. We are looking forward to a series of further events and an annual coach trip, this year incorporating a trip on the River Dart.

In October, Mrs. Caryl Peters of Cake Corner will be demonstrating sweet making and cake decoration so why not pick up some tips for parties or Christmas? November sees a concert by The Rainbow Group for our afternoon's entertainment, and December heralds our Christmas luncheon, where members partake of good food, drink and festivities.

We welcome all new members, so if you have an interest in any of the above events and enjoy good company, come along to the meetings on the second Tuesday of the month in Coronation Hall and make our acquaintance.

*Barbara Pugh 814362*

### **KILL YOUR SPEED - NOT A VILLAGER!**

Now that we are but a moment away from achieving a 30mph limit through the village, we who live here must not forget that it will apply to us, just as much as to those who drive through Bleadon. A recent survey has shown that about two thirds of all accidents in which people are killed or injured happen on roads where the speed limit is 30mph or less.

It is also true that 70% of drivers exceed the speed limit, although by only 5-6 mph. But, amazingly, if you hit someone at 35mph, you are twice as likely to kill them as at 30mph! THAT HAS TO BE SOMETHING TO THINK ABOUT.

Many of us bemoan the speeding cars through Bleadon. After all it's our village, our children, our pensioners, and our pets who are at constant risk. But, be honest, do you think about that when you are driving through Hutton, Locking or any village in Somerset, or anywhere else in the country if it comes to that?

If you reduce your speed you are quite likely to reduce someone else's too!

---

## SUMMER OF FUN: BLEADON BABY & TODDLER GROUP

We closed with a bang for our summer break this year, raising nearly £200 from our sponsored toddle. Some of you may have seen us doing our laps around the park, looking like a protest march without the placards. At the same time we heard that our application to the PLA Toy Trust for a £120 grant for new equipment had been successful.

We had anticipated putting our charges up to £1 from September, but because of this successful fundraising, we will be able to keep at 75 pence per session for another year.

We can also report a very successful summer outing to Bristol Zoo - though unfortunately we missed the opening of the new penguin and seal enclosure by a day. We enjoy our Wednesdays so much that we continued to meet informally throughout the summer at such places as Secret World, Wacky Warehouse and Animal Farm.

Finally, in response to our pleas for helpers, Linda Aplin from Lympsham will soon be popping in now and again to lend a hand. One or two more people would be welcome if any villagers are interested.

*Tracey Harrington 814123*

### 1st BLEADON (St. Peter & St. Paul) CUB SCOUTS



It had to happen sooner or later, we have had two girls join our pack last term, and what a super pair they are, I am sure they will keep the boys in order!! Welcome to Clarissa Sexton and Natasha Salter.

On the 12/13th June the cubs enjoyed a 24hour challenge with our scout troop. They walked, cycled, cooked and played games, but with what I hear they did not sleep a lot. Thank you to Huw and Heather, and all their helpers for making this weekend a most enjoyable one.

Our annual camp this year was spent at Huish Woods in Taunton, 9th/11th July. This weekend is full of fun and enjoyment for the cubs, and the leaders. The cubs worked on their Craftsmen badges. They built a map of the campsite with drawings, pieces of material, sticks, stones and lots of glue. They made Turks Head woggles, did a bit of pioneering, woodwork and a lot of eating and running around. I think you could say a great time was had by all. A big thankyou to Hilary Sexton for cooking for us again, and to Helen Addis for stepping in at the last minute to help.

I am sorry to inform you all, but due to ill health I will be giving up my role as Akela this Christmas. This has not been an easy decision for me, I have enjoyed my eight years with 1st Bleadon Cub Scouts, and I will miss everyone very much. Yes ... you know what is coming next ... we need another leader. If you know of anyone willing to give the pack some of their time, or indeed if you would like to join us yourself, please speak to either Steve or myself and we will help you with any information you require.

*Betty Paterson (Akela) Tel: 812183*  
*Steve Rhodes (Baloo) Tel: 813497*



## **BLEADON VILLAGE MILLENNIUM PARTY**

### **Where will you be celebrating the Millennium?**

When I came to Bleadon eight years ago, there was a touch of village excitement around, but as the years have gone by, this excitement seems to have disappeared. As the year 2000 is just around the corner why not help with an attempt to reintroduce life back in to the Village and get everyone together for a Millennium Party.

Please don't sit back and say 'I wonder what our village is doing for the Millennium'. I cannot do this on my own, so I am asking you if you would like a party and if you would like to help organise it, get in touch. All help would be very much appreciated. The more people that help the less strain it will be. Your ideas could be very useful, get your thinking caps on, give me a call.

*Let's bring a bit of sparkle back into Bleadon, and celebrate in style ... the Bleadon way!!*

Betty Paterson. Tel: 812183

## **BLEADON FRIENDSHIP CLUB**

During the past three months we have had twelve meetings with an average attendance of thirty-two at each meeting.

At each meeting we have had a well arranged programme of entertainment, including bingo, quizzes, talks with slides, and musical entertainment, all of which has been greatly appreciated by our members.

On May 3rd we ran a stall at the Bleadon Village Fayre in aid of the Church and we have also had three outings and a strawberry and cream tea!

Sadly, we have recently lost two valued members. I refer to Jack Thorne, our Bingo caller, and Wally Stevens, a former chairman of the Club. Peggy Hoffman has also had to resign as Social Secretary due to ill health. Mrs. Barbara Spackman has been appointed in her place.

# **BRIDGE GARAGE**

(Prop: Peter Briffitt)

**BLEADON VILLAGE**

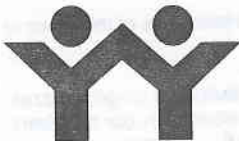
**AT YOUR SERVICE**

**TELEPHONE: 01934 - 812206**

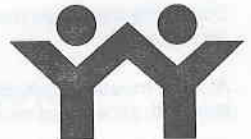
## Forthcoming programme

- Sept. 3rd ✓ Bingo
- 10th ✓ Music. Mr. B. Allam
- 17th ✓ "The Year Round". Talk & Slides. Mr. Cudliff
- 24th ✓ "My Life with Music". Mr. Lowton
- Oct. 1st Arts and Crafts. Mrs. J. Goodman
- 8th ✓ Harvest Service and Auction
- 15th ✓ "The Cotswolds". Talk & Slides. Mr. B. Porton
- 22nd Beetle Drive
- 29th "Sundials". Talk and Slides. Mr. Rootley
- Nov. 5th ✓ "The Two of Us". Mr. & Mrs. Cooper
- 12th ✓ Bingo
- 19th ✓ Music. Harry and Friends
- 20th ✓ Coffee Morning
- 26th ✓ "Humber to Forth". Talk and Slides. Mr. Steel
- Dec. 3rd ✓ Quiz
- 10th ✓ The Rainbow Singers
- 17th ✓ Xmas Lunch *ugh!*

Club re-opens Jan 14th 2000.



## BLEADON YOUTH CLUB: BUILDING FOR THE FUTURE



We are currently endeavouring to get funding and sponsorship for the envisaged new roof with a Photovoltaic roofing system which will generate electricity during daylight hours.

Each tile will cost £250 and we need 280 to complete the roof. We are making every effort to boost our building fund, and we hope to fulfil our aim within the next year. The collection of paper and cardboard has now ceased as this is not a viable project financially, but our sincere thanks for your contribution over the past ten years. We must now find another way to obtain money through applying for Grants and Lottery awards, which we have and are doing at this very time.

When the roof is completed we will then be able to sell electricity back to the grid giving self sufficiency and long term saving of costs to the club for the youth and the future of the area.

If you can help with a contribution, such as buying a tile or a share of a tile, any donation will be received with grateful thanks.

*John M. Burtenshaw*  
Chairman to the Bleadon Youth Club Management Committee  
"Southlands", 17 Tormynton Road, Worle BS22 9HU  
Tel: 513331

(Cheques should be made payable to Bleadon Youth Club  
and sent to the above address. Thank you.)

---

## VILLAGE VOICE:

### A SPACE FOR YOU TO HAVE YOUR SAY

*The Village Journal is an ideal forum for the discussion of village issues, If you would like to reply to this article or have a comment of your own, please write to the editors.*

#### MILLENNIUM BLUES

At the time of writing, I don't know of any plans to celebrate the millennium in Bleadon other than by the mural which has started to be painted in the Coronation Hall. No doubt there will be parties and perhaps some whole village event, but it occurs to me that such a momentous event should be the cause for us all to do rather more than all that.

The media has already started the saturation hype that made the eclipse such a washout and, of course, others will say that this is a religious matter being hijacked by a cross popular culture. Most of the talk is about the cost of a night out on New Year's Eve and how much people want to be paid to work through it. Everyone is expected to party. Already, there is a sense that 'What did you do for the millennium, Daddy?' will haunt adults in the future the way 'What did you do in the war, Daddy?' was used to coerce people into recruiting during the First World War.

But two sides to all this worry me. What it has to do with Bleadon, I can't say. Nothing more or less than anywhere else in the world. But as I live in Bleadon, and we all have to start somewhere, I thought I would write it for the Journal, if they will print it.

The two things that worry me are this.

Firstly, for a really large amount of people, Christmas and New Year is already a sad time. Elderly and housebound people, people who are living alone from bereavement or divorce, people struggling to make ends meet, people without work which they need, disabled people - those, in short, who often feel excluded from the 'highlights' of social life and the dream world of money and friends and fun featured on TV: These are people for whom an even more high profile New Year will be particularly painful.

How can we stop and spare a thought, or better, some time, for these?

Secondly, amid all the talk of the wine flowing and the flights chartered for the Big Bash, I'm worried that we will lose sight of the fact that the world is still very far from being a place to celebrate.

Bill Gates of Microsoft Computers and his two partners - THREE PEOPLE - by themselves are worth more than the poorest SIXTY COUNTRIES in the world. Scarcely a month goes by where we don't hear about a war or natural disaster made all the worse by a country's inability to respond to the disaster. The gap between the rich and the poor is getting wider than ever before and for the have-nots of the world, the next millennium must look very, very gloomy indeed.

I'm not saying we should all go about with long faces and black armbands over the start of the year 2000. Far from it. Let's be happy and celebrate how lucky we all are to be living in a nice village in a nice part of a nice country when it all happens.

But I think we should all remember just how lucky we are, and that, if the millennium means anything at all, it should mean that in the next thousand years, we try to make the earth a peaceful place, where everyone has adequate healthcare, where no-one has obscene amounts of money while others die of malnutrition, where the poorest countries don't pay huge amount of interest to the richest, where no-one has to live in loneliness, and all children grow up with the chance to lead happy and healthy lives. It shouldn't be too much to ask and if we have to start somewhere, why not start here in Bleadon?

Anon

Brought to you by

Wanted  
HOSTS for Party line  
Benefit from discounts

To Book call  
01934 824368  
or  
01934 750756



# Serendipity Linen

The 'Story of Cotton' Presentation

*An unexpected Discovery of The Finest quality Cotton and Linens  
from around the world*

New for old scheme available

*Your Local Friendly Village Company*

# **Plastech Windows**

**Simon Bradbury**

**High Quality  
U. P. V. C. Windows  
Doors - Patios  
Conservatories  
Fascias - Cladding**

**Tel: Bleadon 814500  
Mobile: 0374 475376**

# PURN HOUSE FARM

BLEADON  
WESTON-SUPER-MARE  
BS24 0QE

Telephone: (01934) 812324

*Bed & Breakfast*

EN-SUITE AVAILABLE - ONE GROUND FLOOR  
Proprietor: Mrs. Thelma Moore

## IAN DANCE

Plumbing, Heating & Gas Fitting

Corgi Registered Installer

**Bleadon 813686**

## Mark Howe

offers a **Friendly, Reliable Service** for  
GRASS AND HEDGE CUTTING • TURF LAYING  
ERECTION AND CREOSOTING OF FENCES AND GATES  
PATIO, CHIPPING and PATH LAYING  
TREES AND SHRUBS TRIMMED • DOMESTIC ROTAVATING  
also: PATIOS AND DRIVES PRESSURE-WASHED

**01934 413594**  
**(with answerphone)**

Edited by Penny Robinson (1, The Veale) and Steve Miles (16, The Veale)  
Technical assistance from Bridget Evans (Cruachan, Shiplate Road)  
Published by Bleadon Parish Council, Bleadon, North Somerset

Unless otherwise stated, the opinions and comments expressed in this newsletter are those of the contributor and not Bleadon Parish Council. Cover by John Hickley.  
Printed by Malthouse, Taunton (01823-331111)