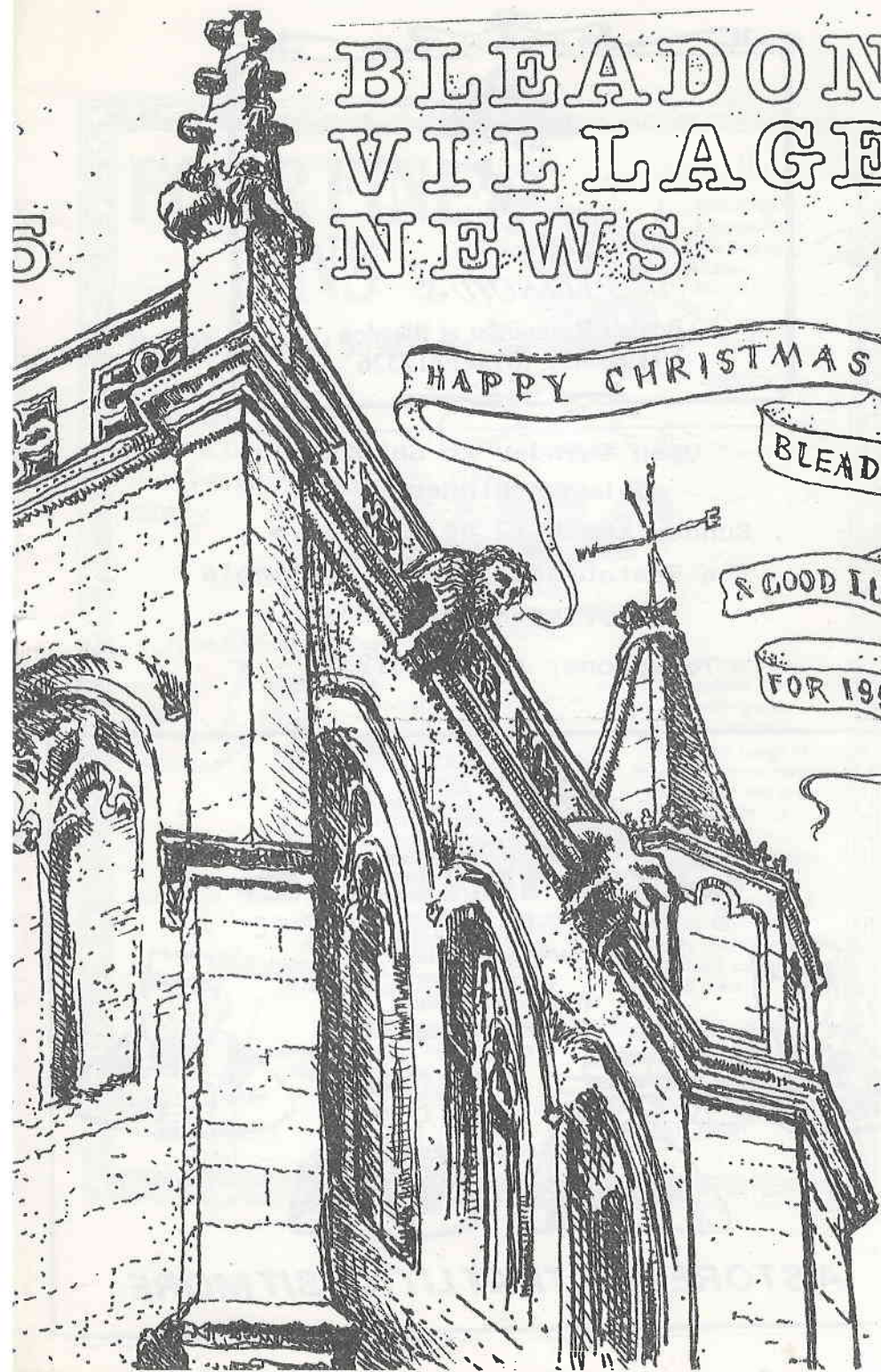


BLEADON VILLAGE NEWS

HAPPY CHRISTMAS
BLEADON
& GOOD LUCK
FOR 1990





Nelson's

Boyle's Restaurant at Bleadon
Telephone: (0934) 812326

Open Tuesday to Saturday
Lunch/Dinner

Sunday Lunch 12.00 till 4p.m.

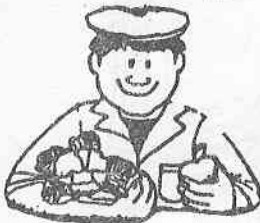
The Restaurant is also available
for private functions

Telephone: (0934) 812326



Sanders
SUPERSTORE

westhome Nurseries
Lympsham,
Weston-super-Mare
Tel. (0934) 812652

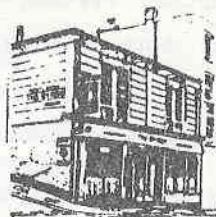


A STORE FOR THAT LITTLE BIT MORE

FOUR FINE INNS

Eat, Drink and be Merry!

When it comes to hospitality, no-one does it better than the Giorgione family.



THE BYRON
2 Byron Place,
The Triangle,
Clifton
Tel: (0272) 299322



THE NEW BATTLE AXES
Old Bristol Road (B3130), Wraxall, BS19 1LQ
Tel: Nailsea 852645/851015

WESTON-SUPER-MARE

BLEADON



CATHERINES INN
Bleadon Road (A370), Bleadon
Weston-super-Mare
Tel: (0934) 812275

BURNHAM-ON-SEA



ORCHARD INN
Main Road (A38), West Huntapill,
Highbridge, Burnham-on-Sea
Tel: (0278) 783526

HIGHBRIDGE

BRIDGWATER

These four busy, successful inns provide good companionship, a wonderful range of real ales, lagers, wines and spirits and the most generous Carvery food. . . . Mouthwatering slices from perfect roasts, freshly prepared vegetables and a selection of continental dishes - highly recommended and very good value.

Experience it for yourself and discover why these Four Fine Inns are well worth finding!

THE GIORGIONE GROUP

Dear Parishioner,

Sadly, this is my last letter and also the last newsletter, as no one has volunteered their services as editor.

Since its inception fifteen months ago, many people have made contributions, both historical and factual, for which I am grateful.

People have expressed delight at receiving such a communication within the Civil Parish, because not everyone is able to attend Council meetings and reports are not always fully interpreted in the press.

I will still strive to serve the Parish to the best of my ability, but it must be remembered that vandalism and bad behaviour will not be tolerated at any level.

Finally, I wish to thank our Editor, Mrs. Corder, for all her hard work and tolerance, and to Mr. Kelly for printing the newsletter. Thanks must also go to Mr. Hickley for his superb cover drawings and to everyone who has distributed them.

May I wish you all a Happy Christmas and a prosperous 1990.

M.E. Sheppard,

Chairman.

BLEADON FRIENDSHIP CLUB

Chairman Mrs. G. Rimmer,, welcomed Mr&Mrs Britton back after their trip to America.

We were extremely sad to learn of the death of Mr. Norman Sewell and extend our sympathy to Mrs. Sewell.

Mr. Jack Thorne is recovering well after a recent illness.

Mr. A. Steele entertained us with beautiful slides of the Scottish highlands in October, and Mr. R. Addison arranged a visit to Weston Birt Arboretum. Autumn trees and sunshine added colour to our day. December 15th -meeting, Dec. 21st - Christmas

lunch - Kirkwood Hotel. E.M. Tucker

PLANNING APPLICATIONS

1244/89	Dwelling. 3&4 Manor Villas.	Approved.
1212/89	Residential Development. Toll Road.	Refused.
1379/89	Alter/Extend Southview Cottage. Amended Plan.	Approved.
1397/89	Dwelling. Chestnut Lane.	Approved.
1462/89	Dwelling. Rear of Mulberry Villa.	Refused.
1725/89	Single Storey Offices. The Wharf, Lymsham.	Approved.
2226/89	Extension. 1 Bridgwater Road.	
2379/89	Change of use to nursing home. The Mount.	Refused.
2363/89	5 year renewal. Guide Hut.	Approved.
2381/89	Residential development. Willets Mill.	
2468/89	Vehicular access. 5 Pine Lea. With an order to reinstate.	Refused.

Building Regulations only:

Shed and Car Port. Wild Acre.
Illuminated signs. Bridge Garage.
Alter/Extend. Roman Acre.

2318/89 Retain 2 storey extension. Coombe Farm.
Referred to the Planning & Conservation Committee with
a recommendation to refuse and reinstate.

0907/89 10 houses, Purn Way. Gone to Appeal.

A guide for householders on planning is available from Wood-spring District Council.

This is an explanatory booklet which indicates whether or not planning permission is required, and the procedures to follow if a planning application is to be made.

M. Corder.

GARDEN WASTE

During the Summer months, certain residents in Bleadon Road threw their grass cuttings into the rhyne, and as they contain chemicals, are a threat to wildlife, and in particular to protected species. We would ask them please, to refrain from doing this in future and dispose of their garden waste in the same way as other residents.



More than four centuries ago, the famous map-maker Christopher Saxton, drew the outline and sketched the main features for all 40 traditional shires of England.

Born in Yorkshire, he travelled all over the country on horseback to survey each county in turn, finally producing his maps in 1579 after an exhausting nine-year task.

The counties themselves, had of course, been in existence for many centuries before Saxton drew them, but they had never been mapped collectively.

His publication meant that England was the first country in the world to have a national atlas.

BLEADON CORONATION HALL MANAGEMENT COMMITTEE

The Christmas Dinner Dance is on Friday, December 15th with a super meal of roast beef and all the trimmings, choice of sweet, coffee etc. Dancing to midnight with the ever popular Atlantis Band. A full bar will be available. Tickets (strictly limited) will be available from committee members, The Post Office or telephone me on Bleadon 814517.

L.J. Chamberlain. Chairman.

A few weeks ago, Woodspring District Council's Dog Patrol issued us with posters to display around the village in an effort to combat the increasing instances of dog fouling.

Some mindless person removed the posters the following day. Could it be someone who doesn't care where his or her dog fouls as long as it not in their own garden?

Our thanks go to the lady with a golden labrador seen recently clearing up after her dog in Coronation Road - a prime example of public spirit.

So many complaints have been received in respect of the Churchyard. It is distressing to those tending graves and unpleasant in the extreme.

M. Corder.

RETURN TO SOMERSET CAMPAIGN

Dr. Tim Kelly welcomed a packed meeting at the United Reform Hall on October 16th when apologies were received from John Cleese, Jerry Wiggin and Tony Brittain.

Michael Bradford, a strong campaigner for the Yorkshire Ridings, repeated the Government statement of 1974. "The new county boundaries are administrative areas and will not alter the traditional boundaries of counties, nor is it intended that the loyalties of people in them will change, despite the different names adopted by the new administrative counties."

Russell Grant, President of the County Boundaries Association, told the story that once when he was working on T.V.a.m., his producer wrote down an address for him to read as Worle, Avon. As the broadcast went out live, Russell exclaimed to viewers, "Oh look! My producer has got it wrong again! Worle is in Somerset, not Avon." This resulted in 95 letters of support from various local areas.

He stressed the importance of teaching our children the historic aspect of county boundaries formed by hills, rivers and mountains, then went on to urge us all to use Somerset on our addresses, for geographically, we have been Somerset for more than 800 years.

Blame was attached to the media for using the administrative names which are listed in Bartholomew's directory.

As a result of the immense interest and enthusiasm shown, a formal committee will now be formed.

Both Councillor Ron Goodman and I have attended most of the campaign meetings, and at the last meeting, I was invited to sit on the committee as Bleadon's representative. Councillor Goodman regrettably, wished to retire.

R. Ham.

VILLAGE CAR PARK

Would those using the car park, please refrain from parking in a straight line from the guide hut to the youth club. This cuts off a large section of the car park which provides at least a further 8 spaces.

Once again, car owners are asked NOT to park on both sides of the road in the village centre. This is both inconsiderate and dangerous. The car park is generally empty at times when Church services are held.

BLEADON PLAYERS

1989 has been a most enjoyable and succesful year, and the tremendous response to our review "Oh What a Bleadon War" was extremely encouraging. So much so, we were able to entertain the Weston Homemakers with a potted version of it.

A busy time ahead begins with a short cabaret for Lympsham W.I. This ought to put us in the mood for our next production in the New Year.

Tickets will soon be available for the "New Year Show Time" to be held in the Coronation Hall, Bleadon on the 12th & 13th January 1990. The price of £3 will include supper. A bar will be open.

New members will be more than welcome no matter where their talents lie. i.e. we need assistance both on and off stage.

Our activities include social events for the benefit of members. Do join us.

F. Davies. Chairman.

BLEADON PARISH CHURCH

SUNDAY. 17th December. 3.30p.m. Christingle & Party.
Sunday. 24th December 10.15a.m. Lessons & Carols.
Sunday. 24th December. 11.30p.m. Midnight Mass.
Monday. 25th December. 10.15a.m. Family Communion.

D. Parkinson. Rector.

PUBLIC FOOTPATH AX6/14

This footpath, which runs alongside Riverside Cottages had been redefined.

Woodspring District Council is now handling the matter, and unless any objections have been raised, the new route will be adopted.

M. Doolan.

It is not too late for anyone to come forward and volunteer their services as editor!!

M. Corder.

CONTACTUS

Have you a neighbour who would be isolated/housebound without visitors or outings? Do you see groups of youngsters around, bored by a lack of imaginative activities or know of people worried and baffled by forms, documents etc?

I believe it is within the power of the community to help to restore to these people, a quality of life they are denied through no fault of their own, and Contactus' commitment is to try and bring this about.

The last four years have been succesful ones. Welcome parties to newcomers to the village were arranged, and Mr&Mrs Philip Ashley produced Welcome Packs.

I believe we won the award, last year in the Avon Village Venture Competition on the strength of our Welcome policy rather than through other activities. Unfortunately, lack of membership, information and feed-back accounts for much of our less succesful endeavours in other directions.

We are very aware that many parishioners devote much time to visiting the sick, elderly and lonely, but periodically there is a chance hearing of someone whose needs have gone unnoticed.

In order to achieve the aims of Contactus, we urgently need new members. Fully active or not, we would welcome all those willing to help us attain our objectives - to give help where help is needed.

The A.G.M. will be held on Wednesday, 17th January 1990 in the Church Room, (next to the Rectory) at 7.30p.m. when we shall be explaining our aims and ambitions.

We hope you will make every effort to attend and we look forward to enrolling many more members.

John Tomlinson. P.R.O.

Bleadon Parish Council regrets to hear of the death of Lewis Hoyle, who for many years, together with his wife, tended the village play area and created magnificent floral displays in the Jubilee Garden. He will always be remembered for his remarkable talents.

Bleadon Parish Council meetings are held on the second Monday each month (except August) at the Coronation Hall, Bleadon at 7.30p.m.

WHY NOT ASK

DUDLEY'S TO CALL



Home cooked meats
Weekly counter best buys
Home freezer specials
Home made sausages

FREE DELIVERIES TO BLEADON

14 BAKER STREET, WESTON-SUPER-MARE
Telephone: 625440

The Queens Arms

Bleadon Village,
Near Weston-Super-Mare.

Good Beer and Good Value Bar
Meals and Snacks

:Parties Catered for:
:Skittle Alley available
for Functions:



Bleadon 812080

BRIDGE GARAGE

(Prop: Peter Briffitt)

BLEADON VILLAGE

AT YOUR SERVICE

TELEPHONE: 0934 - 812206

BRIDGE ROAD, BLEADON

812358

KERBS

EDGING

SLABS



WINTERSTOKE ROAD,
WESTON_SUPER_MARE.

628185

DECORATIVE PAVING SLABS

BAGGED SAND AND

AGGREGATES

CONCRETE BLOCKS

The Anchor Inn

Bridgwater Road
Bleadon, Weston.s.Mare
Avon.

Tel. Bleadon 812352

MICHAEL & BRENDA BOYLE offer GOOD FOOD and
HOSPITALITY SEVEN DAYS PER WEEK.

SUNDAY LUNCH.

FULL À LA CARTE MENU AVAILABLE

TOP-SIDE BUTCHERS

Dave Lawes

Tel: 614052

Severn Road (next to Co-op)

Weston-super-Mare.

TOP QUALITY

British Meat Guaranteed

Beef, Pork, Lamb, Offal,

Ham, Bacon, Sausages.

Deliveries:-

Tuesday, Friday,

Cooked Meat,

Saturday.

Farm House Cheese.

ADVERTISING CHARGES

Per annum: 7mm £10, 14mm £15, 21mm £30 (4 issues)

Published by Bleadon Parish Council, Bleadon, Avon.
Unless otherwise stated, the opinions and comments
expressed in this newsletter are those of the con-
tributor and not Bleadon Parish Council.