

Bleadon News

Issue 123—September 2022

TOP STORIES

Page 3:

First words from the new parish council chair.

Page 5:

Good news for play park.

Page 7:

Paying tribute to Don.

Page 8-9:

Dates for your diary.

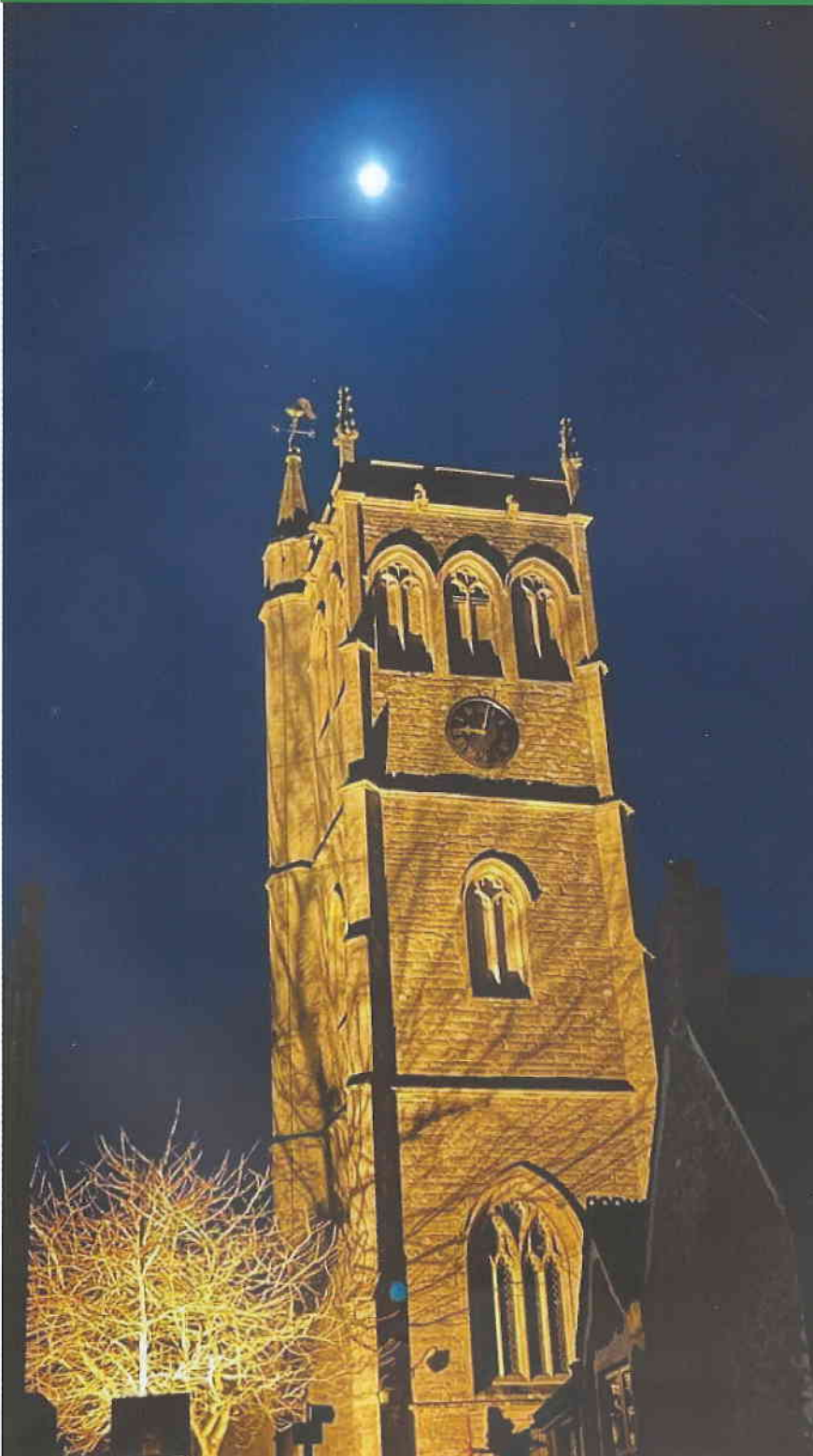
Contact the editor:

Ellie Young

Bleadonnewseditor@gmail.com

Insta: @BleadonVillageNews

Thank you to Mary Oaten for this beautiful front cover image.



Twenty's plenty

by Graham Getty

On behalf of Bleadon Parishioners, Bleadon Parish Council has applied to North Somerset Council for a 20mph speed limit to be imposed throughout the village.

This has already happened in Uphill and Lympham for example - and Hutton, Locking and Congresbury are in the process of applying.

When discussing with North Somerset Council it was evident that many of the criteria which lend themselves to a 20mph limit apply to Bleadon. Narrow roads, blind bends, parked cars and adjacent playgrounds for example.

The application will likely take many months to process, and will involve site visits and discus-

sions with experts to ensure the solution introduced for Bleadon is optimal.

But we hope everyone agrees that this will be a beneficial scheme in terms of safety for anyone driving, walking, cycling or horse riding through the village.

We will keep you posted, and if anyone has any queries, please feel free to contact Cllr Graham Getty.



Invitation

All new Bleadon parish residents since 2020...

To: 'Contact us' social get together

At: Bleadon Coronation Hall

On: Thursday 29 September at 7pm

Come along and meet other residents, parish councillors, representatives of the various clubs and discover what activities are on offer.

Also learn details about local services and more.

Light refreshments will be provided.

We look forward to meeting you.

Letter from the Chair

By Kirsten Hemingway



I am delighted and surprised to be writing my first message as Chair of the Parish Council. I would first like to thank outgoing chair Gill Williams for her service during the Covid-19 pandemic and congratulate her on a job well done during difficult circumstances. I would also like to thank Mary Sheppard who supported her as the vice

chair.

So much good work has gone on since the Jubilee issue. Firstly, Bleadon in Bloom, the Bloomers did a wonderful job of decking the village out in flowers and building community initiatives such as the polytunnel.

They did it with great humour. There are around 60 tubs in the village now and they all need watering, luckily Bleadon has a huge team of volunteers who do this daily.

There are also teams who take care of the trees and others who clear the litter from the streets. They are planning for the planting of more than 100 trees in October – each one will be dedicated to someone under 16 in the Parish and the family can help their young person to look after the tree. The tree team also took delivery of one of the 50 *Quercus robur* (oaks) from a scheme by the AONB.

Another team has been hard at work raising funds to gild the Parish Clock. The clock is an important part of the parish and handed down to us as a community. It is such an important marker of time, and we should be proud to note that once this work is complete it will be a generation before it is needed to be done again.

The work of the team looking after the facilities for that generation also warrants a mention. We are very pleased to note that the hard work of

Sara Garrett, Gill Williams and the parish clerk has resulted in a grant for new equipment in the play area.

As a parish council we are looking for ideas to improve facilities for the young people in the parish from the age of 12 up who are not catered for very well. We are keen to hear from anyone with ideas about what we could do for this age group.

It is so exciting to note that we will be hosting a 'Contact Us' get together for new people joining the parish. This has been sorely missed during the pandemic and we felt that it was an important event to revive post haste. I remember arriving in Bleadon from the Isle of Arran more than 20 years ago and it was such a valuable way of getting to know people. Thanks to Ann Davis and Huw Boyce for leading this initiative for the parish.

Work to create an island for crossing the A370 at the end of Bridge Road should be underway soon. This and many other road issues are being investigated by Graham Getty and Sara Garrett. This team is also responsible for the footpaths, cycle paths and bridleways across the parish.

I am elected as chair for one year and I hope in that time we will hear more from the people in the parish and see more involvement from everyone. We are facing a challenging year with prices rising for fuel and inflation hitting highs that will clearly involve everyone having less to spend and more to worry about.

In these times of great challenge, the best people to help are the community and neighbours. If we find that generally in Bleadon we are ok, then I suggest that as a group we look to support neighbouring areas where poverty will be hitting communities hard.

I know how precious our time is and how we are all busy with getting things done but just a small amount of time to water some plants or make a cup of tea for a neighbour goes a long way, and it also brings us so much back in return.

Please get in touch with us at the Parish Council if you want support with any community initiative that can connect us and help us help everyone inside the parish or even help people inside the parish do more for others.



George's crossword

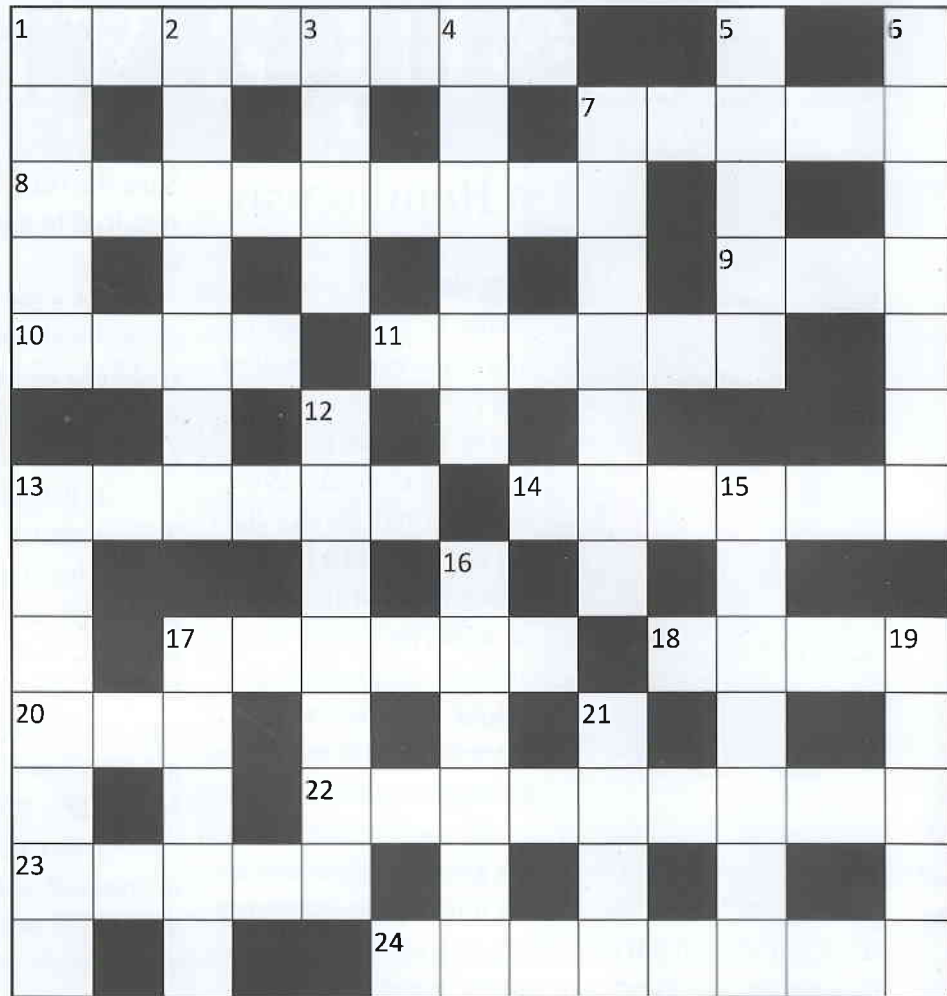
ACROSS

- 1. Toiled with hesitation. Hung about (8)
- 7. Scottish stone or cake (5)
- 8,10. London market on slipway (9,4)
- 9. Unwell in 11 across (3)
- 10. See 8
- 11. If dell returns it's complete (6)
- 13. Half the diameter of the arm (6)
- 14. Serve a turn in these theatrical shows (6)
- 17. Tender bids (6)
- 18. Sounds like a lazy hero (4)
- 20. At home, north of hostelry (3)
- 22. Greek sorceress (about 100) hangs around hospital department. Odd! (9)
- 23. Improve last word before daybreak (5)
- 24. Obliterates ruins (8)

DOWN

- 1. Part of jacket for all P.E. perhaps (5)
- 2. Dot nine when vicar sang plainsong (7)
- 3. Old record in charge of heroic story (4)
- 4. Empire initially, toxic perhaps, but exciting (6)
- 5. Soil perhaps, dense initially but firm (5)
- 6. Senior college friends (7)
- 7. Horses stopped in their home (7)

- 12. Drank very noisily in the east quad (7)
- 13. Car dial is basic (7)
- 15. Endure beneath drive (7)
- 16. Welsh boat fails to start at Delphi (6)
- 17. Notes inception (5)
- 19. Hair fasteners (5)
- 21. Small insect comes up with a whiff (4)



Name	Email
Kirsten Hemingway	Kirstenhemingway @bleadonparishcouncil.co.uk
Gill Williams	Gillwilliams @bleadonparishcouncil.co.uk
Mary Sheppard	Marysheppard @bleadonparishcouncil.co.uk
Huw Boyce	Huwboyce @bleadonparishcouncil.co.uk
I D Clarke	Idclarke @bleadonparishcouncil.co.uk
Ann Davies	Anndavies @bleadonparishcouncil.co.uk
Sara Garrett	Saragarrett @bleadonparishcouncil.co.uk
Graham Getty	Grahamgetty @bleadonparishcouncil.co.uk

Good news for play park

By Gill Williams
& Sara Garrett

When the Bleadon Parish Council undertook the village survey as part of our information seeking for the Neighbourhood Plan in 2019, one of your five key issues for the development of the village was increasing recreational facilities for older children and young adults, with 83.28% of those answering the survey rating the play area as moderate to high importance to them.

We know the current facility is a hugely popular village area for families with young children and that the kickabout area is popular with the older age range in the evenings and weekends.

The middle to older age group however have very little to challenge their developing skills. Balancing, clambering, upper arm strengthening and an active response to the equipment is an essential ingredient for their physical development.

We did do a survey of village children pre covid, we talked to them in the park and we also talked to the younger youth club members and asked them what they felt was missing.

Covid got in the way of our progress but in May of this year North Somerset announced that they would provide matched funding for councils who could demonstrate their needs to upgrade their play parks.

Cllr Garrett and I raised the matter at council and it was agreed that BPC could provide £5,000

towards the project in the hope that North Somerset could match it.

Sara and I spent some time in putting together the application citing your concerns raised in the survey along with the children's comments, and using my decades of experience in the physical education of primary age children we stated exactly what we would need and most importantly for an application - why.

The idea is that the new equipment will run parallel to the roadside railings, thus keeping as much 'kickabout' area as possible.

We were very happy to learn at the end of July that we had been successful and immediately set about getting the quotes from a range of companies who make the necessary high quality equipment.

These have now been received and forwarded to North Somerset and at the next BPC meeting we will be accepting our favoured firm in terms of the range of equipment they can provide, the proportion of equipment, installation fees and installation dates.

The project needs to be completed by the end of March next year, and we will keep you informed along with giving you as much notice as we can as to when the work will take place.

Children of the village in the 6+ age range can start to get excited, your time is coming!

For more information on the scheme please go to the following website: <https://www.n-somerset.gov.uk/news/new-improved-play-areas-north-somerset>





PBF WEALTH MANAGEMENT

Bleadon Village News catches up again with our local Financial Adviser Katheryn Johnson who lives and works in the village of Bleadon about making 2022 a less taxing year. Katheryn says there is still time this year, make the best use of tax reliefs and allowances to help secure your financial future and the inheritance you leave to your loved ones, here are ways in which she may be able to help you.

Well over a decade since the last financial crisis, the world is still a very uncertain place. It is always wrong to believe that market shocks are a thing of the past. From uncertainty over the impact of Brexit to supply chains, and of course COVID-19, then more currently the impact for the war in Ukraine. There are always many risks that pose a challenge to investors at any given time; and any number of unforeseen factors in the years to come.

But these are beyond our control; they cannot be allowed to prevent us from planning our financial futures. Indeed, we will give ourselves the best chance of achieving our financial goals if we focus on what we can control: how and where we invest our money, how much tax we pay, the size of our retirement fund, and how much of our estate passes to our family free of Inheritance Tax (IHT).

Effective financial planning should be a year-round activity. Valuable reliefs and allowances can help to create long-term financial security for ourselves and our family.

ISAs

ISAs have become one of the most popular ways to save, principally because they are simple and readily accessible.

The ISA allowance to £20,000 is a very welcome method for encouraging individuals to invest for their future. However, as interest rates in the UK are lower than ever, money being held in Cash ISAs is failing to achieve the very basic objective of keeping pace with inflation. The result is real losses for savers.

Those who are investing their ISA allowance for the long term – in assets offering the scope for attractive levels of income and capital growth – are giving themselves a better chance of maximising the tax-saving opportunities on offer.

Individuals yet to use their ISA allowance, or with accumulated ISA savings, need to carefully consider their options to ensure that they are maximising this valuable opportunity to generate tax-efficient capital and income for the future.

Pensions

Saving into a pension is an even more attractive prospect than it was a few years ago. This is because there is much greater

freedom for taking benefits; and pension savings can now be more easily left as part of a tax-free inheritance. However, the advantages extend further than just drawing benefits and passing money on to loved ones: the government still rewards savers by giving them tax relief on their pension contributions.

Subject to certain limitations, for every 80p you contribute to a pension, the government automatically adds 20p in tax relief. Higher earners can claim extra tax relief through their annual tax return, so a £1 pension contribution can effectively cost just 60p.

However, with the government under increasing pressure to reduce public spending, there's no guarantee that the higher rates of tax relief will be maintained into the future.

Those wishing to make their retirement plans a reality should consider fully utilising their annual allowance for this tax year to make the most of the tax breaks on offer. Unused allowances can be carried forward, but only from the three previous tax years. This financial year is the final chance for pension savers to use the 2018/19 allowance.

Inheritance Tax

There are few more confusing – or unpopular – taxes than IHT.

There are a number of exemptions that allow individuals to reduce future bills. Perhaps the best known is the annual gifting allowance, which gives individuals the opportunity to remove £3,000 of assets from their estate immediately (£6,000 if they use the previous year's allowance as well).

Taking steps to reduce your taxable estate by topping up a child's pension or Junior ISA could go a long way to providing them with an invaluable head start in life. The Junior ISA allowance is £9,000 for the 21/22 tax year. Also, make this year's £3,000 gifting allowance count – and carry forward last year's, if you haven't used it already.

It's a time of the year when individuals and couples are given an opportunity to put their long-term plans back on track by using reliefs and allowances that would otherwise be lost. Nevertheless, this requires some knowledge and expertise. That's why you should speak with a financial adviser to better understand how you can gain maximum advantage for this year and the years to come.

To receive a complimentary guide covering wealth management, retirement planning or Inheritance Tax planning, Katheryn at PBF Wealth Management on 0787 6687561 or email katheryn.johnson@sjpp.co.uk.

The value of an investment with St. James's Place will be directly linked to the performance of the funds you select, and the value can therefore go down as well as up. You may get back less than you invested.

Remembering Don

By Ellie Young

The first time I met Don Gardner was in August 2020, when the first wave of the pandemic seemed to be coming to an end and we were freed from our houses. I met with Don to talk about his incredible story for my first edition of the Bleadon Village News, to mark his 100th birthday.

Don won me over with his charming smile, fantastic, inspiring tales and bubbly personality... and a delicious plum for his tree outside!

In our meeting together, which lasted several hours, we talked about his long life and some of the experiences he faced as a young prisoner of war.

With the family's blessing, I have been able to pay tribute to Don by recounting parts of his life, as well as sharing his family's gratitude to you all.

head off."

Don and Betty were married by his father in the church where they met seven years previously on August 18th, 1945. The pair spent 73 very happy years together.

The pair had one son, Christopher, two granddaughters as well as his great-grandson Alfie who was born a year and a day before Don's 100th birthday.

During World War II, Don joined the Royal Engineers Mechanical Engineers in the Army field workshop unit.



The family and I would like to take this opportunity to thank all of those in Bleadon who made Don and Betty feel so welcome in the community when they arrived 30 years ago. They loved being part of village life and entering into social activities.

I know that they were both extremely content with their lives in the village and enjoyed every moment of their time spent there. There is no doubt in my mind that this was for them a very special place.

Our particular thanks go to those neighbours and friends who helped them through the difficult final years of their lives with patience, kindness and understanding.

Thank you all.

Don was the third-born son of a Methodist minister. Growing up under the Methodist Church, Don and his brothers attended Kingswood School in Bath, where Don spent six 'very happy years' from 1930 to 1936.



Don met his late wife Betty in Birmingham when he was 17 years old at church.

He told me: "I was 17 years old at the time and sat myself down in church one Sunday morning and began to look around. In the choir, was the most beautiful girl who was singing her

While in France, he became part of the 51st Highland Division and was sadly captured as a Prisoner of War in May 1940.

Following his escape during the Russian invasion of Poland and returned home to his dearest Betty when he was 25 years old.

Don and Betty moved to Bleadon when they retired in 1985 and were the founders of the Bleadon Bridge Club.

Don, thank you for your years' of service and for being a friend to so many. You really were an incredible man and we take solace in knowing you are with your beautiful Betty once again.

If you would like to read more about Don, visit www.bleadonparishcouncil.co.uk and read the September 2020 issue of the magazine.

What's coming up?

Get the Christmas Market in your diary

by Jo Jones

Bleadon Village Market would be nothing without its volunteers. A highlight for visitors after a tour of favourite stalls to top up supplies, is a sit down with a friend for a cup of tea and a delicious snack.

In the Market Kitchen, we try to support our stallholders where possible by using their supplies. A lovely tea cake from Hills' Bakers is always popular.

Breakfast or an early lunch with a sausage bap using Mike's delicious pork sausages is a winner. Our lovely volunteers stock the kitchen, cook, serve wash and clean up every month. There is a rota, but you will often see the same faces.

A big thank you to Rachel, Liz, Jane,

Maggie, Audrey, Viv, Di, Kay, Sue and Robin.

Make a note in your Diaries Now! The Bumper Bleadon Christmas Market is on Saturday 3 December from 9.30am to 12.30pm in the four halls in the heart of the village.

With more than 50 stalls selling Christmas delights and goodies, raffle and refreshments to enjoy, there is something for everyone.

See you there!



Need legal advice?

WARDS
SOLICITORS

Expert services for you, your family and your business

FOR YOU:

Accident and Injury | Cohabitation | Conveyancing | Court of Protection | Crime | Disputes
Driving and Road Traffic Offences | Employee Relocation | Employment | Family Law and Divorce
Medical Negligence | New Homes | Notary Public | Probate | Probate Disputes | Wills and Mental Capacity

FOR YOUR BUSINESS:

Business Disputes | Business Employment | Business Relocation | Commercial Property | Commercial Property Disputes
Commercial Services | Countryside Commercial | Crime | Debt Recovery | New Homes Developers | Notary Public

Get in touch: 01934 413535. 37 Boulevard, Weston-super-Mare, BS23 1PE

wards.uk.com

12 offices located across the South West: Bradley Stoke | Central Bristol | Clevedon | Henleaze
Keynsham | Nailsea | Portishead | Staple Hill | Thornbury | Weston-super-Mare | Worle | Yate

Solving your legal problems ...locally



Harvest Festival

By Gill Williams

It is encouraging that in the post pandemic period we are beginning to see some of our village traditional events returning.

One of these is the Harvest Lunch. This year we are going to hold our lunch on Sunday 16 October at 12pm for 12.30pm in the Coronation Hall.

There will be a bar and the meal being offered will be chicken, jacket potatoes, and vegetables with a vegetarian option, followed by apple crumble and custard.

We have chosen these simple items deliberately as representative of what most people would

be able to eat and representative of a simple harvest.

The price will be £12 for adults and £6 for children and this will be required to be paid on the door on the day.

However, obviously we need to know numbers beforehand, so, if you would like to join us at this village event then please contact either Jacqui Hall Scott on j.hallscott@btinternet.com or me, Gill Williams on 813255 to book your seats.

After the lunch at 3.30 pm on the day we will also be holding a Harvest Songs of Praise. This will also be in the Coronation Hall but please feel free or not to stay and sing.

We look forward to seeing you on the 16th.

Macmillan Coffee Morning

This has now become an annual event in the Church Room and once again will take place as usual on the last Friday on 30 September from 10.30am until noon.

Do please come for coffee, or tea, and some delicious cake on this day to support the cancer care charity.

The national event raises money for Macmillan Cancer Support, one of the largest British charities which provides specialist health care, information and financial support to people affected by cancer.

We will be one of hundreds of such events taking place up and down the country, so I hope Bleadon can make a big contribution.

If you can offer a cake to help please contact me Gill on 813255.



Professional Services for
**PRINTING
DESIGN
GRAPHICS
BOOK PRODUCTION**

Same day response for all quotes and enquiries.

Friendly, local and independent.



01934 635916

www.taylorthorneprint.co.uk

Unit 2, Glencoe Business Park, Wame Road, Weston-super-Mare, Somerset BS23 3TS

Bleadon Horticultural Society

by Rose Benjamin and Libby Boucher

This year's coach trip in July was to Forde Abbey near Chard. We stopped for coffee at Coates Willow and Wetlands Visitor Centre and admired the skills of the willow weavers with characters from Alice in Wonderland all woven from willow.

At Forde Abbey, we explored the house which was once a medieval Cistercian monastery. There was plenty to see in the garden with large ponds, magnificent summer borders and the tallest powered fountain in England.

Future meeting dates:

Tuesday 18 October:

On the Wildside of Dartmoor: The Gardens of Buckland Monachorum and Wildside.

By Hilary Little

Tuesday 15 November:

Creating a Christmas Table Decoration

By Libby Boucher



Karndeans
Colours just
launched
June 2022!

A Flooring Ltd

Your local flooring specialist

We supply and fit a huge range of flooring products to residential and commercial customers:

- Carpet
- Real Wood / Engineered Board
- Vinyl
- Karndeans (Platinum Installer)
- Natural Flooring
- Wet Room Flooring
- Disabled Access Shower Rooms
- Non-Slip Safety Flooring
- Hygienic Wall Cladding
- Furniture removal available



Our family business established in 2005 offers an efficient, reliable and honest service with free professional advice at your home or at our showroom in Bleadon. We can advise you on the best options to suit your home or business. For more information please call today.

**Unit Q Purn House Farm
Purn Way
Bleadon
BS24 0QE**



Karndeans
Designflooring



CORMAR
CARPET CO

Tel: 01934 813693
Email: info@flooringsomerset.co.uk
www.flooringsomerset.co.uk

Bleadon in Bloom

By Robin Flavell

South West in Bloom judging on 5 July

There was a big team effort to get the village looking fantastic for the judging day. The roads and the area around the Coronation Halls were weeded, the tubs and hanging baskets were looking their best, the allotments were cleared of junk and the village noticeboards shipshape in time for 5 July.

Thanks again to everyone who has contributed, whether it's been a couple of hours here and there, or sustained help throughout the summer to keep the tubs watered and looking good.

The judges, Tim Eley and Su Maddocks were shown the best of what the village has to offer. Some of the highlights included:

- **Village gardens**

The judges were shown several beautiful cottage gardens, a Mediterranean garden constructed largely from recycled materials and an eco-friendly garden with a sedum roof.

- **Village flower displays**

The flower displays were looking magnificent at the beginning of July. The judges were impressed that we'd included some perennial salvias. They also liked our inventive use of silver and purple crowns to celebrate the Jubilee.

- **Community polytunnel and allotment**

The Bloomers were out in force to showcase what we've achieved this year at the allotments. We were proud to show how far we've come in setting up our own polytunnel for growing our own flowers.

The rest of the allotment has been shared by a group of gardeners who would find a whole allotment too challenging. This relatively small space has proved a big success and very productive. Thank you for all the delicious courgettes, tomatoes, and runner beans!

- **Community Fundraising**

Hours of work have gone into our fundraising efforts throughout this year with craft sales & plant sales. This has allowed us to buy the jubilee crowns, equipment, fertiliser and some of our plants.

- **Churchyard gardeners**

Reverend Tim Erridge kindly took the time out of his busy day to meet the judges and explain how the churchyard has been improved over the last few years with the help of a team of volunteers.

- **Environmental**

We demonstrated our commitment to gardening in an environmentally friendly way with the use of recycled materials at the allotment and polytunnel, as well as the large rainwater butts at the halls.

The wildflowers seeds planted in 2021 have started to germinate. The display at the bus stop on Bleadon Road was particularly beautiful.

We are judged against the Royal Horticultural Society standards based on horticultural achievements, community involvement, and our care for the environment. There is a Gold, Silver, Silver Gilt or Bronze award up for grabs.

How did we do?

I'm afraid we'll just have to wait until the awards ceremony in October to find out! If you want to get involved with Bleadon in Bloom - contact Kirsten Hemingway (writer@kirstenhemingway.co.uk) or Robin Flavell (robinflavell@yahoo.com).

Plant a tree for the Jubilee

We have 107 trees arriving in October for the children of the village and we still need a few things to support this project.

If you can help with any of these please contact Kirsten Hemingway:

- A design for the plaques for each tree
- Landowners to come forward with places for planting
- Someone to update the Queens Green Canopy website with the location of the trees.

It's still not too late to add your children to the list, contact Gill on:
gwilliams28@gmail.com

The uniqueness of Bleadon

By Les Masters

Bleadon is obviously rated as a pretty special village, judging by the comments of numerous residents, both old and new. I would go further and claim that it is unique among the 6,000 plus villages in the UK, using the following criteria.

1. It contains a golf course, which puts it straight into a select minority.
2. It contains a croquet lawn, which makes the minority considerably more select.
3. It contains a group of fishing lakes.
4. It contains a herd of alpacas

I am pretty sure no other village contains all four, but the next feature must be the clincher!

5. Above one of the bars in the Queen's Arms is a quotation from the Rubaiyat of Omar Khayyam (honestly!)

Admittedly it contains a wrong word, but where else can you find such a thing? I suspect it was chosen by Mike Sanders.

I worked this out some time ago, but I can now add another highly unusual point.

We have as our parish council chair a lady who completed the London Marathon. Need I say more?

Yes I do! I dare not leave out the achievements of the Bleadon Belles, becoming national champions and performing at the Albert Hall.

Or Tenterk's trio of victories in the Horse Of The Year Show.

To borrow a, somewhat boastful, phrase from the Scots:

Wha's like us?

Bleadon Village

MONTHLY

MARKET

Saturday

17th

Sept

15th

Oct

19th

Nov

3rd

Dec

Coronation Hall and Jubilee Hall

BS24 0PG

9.30am – 12 noon

30+ stalls with:

Fresh local produce. Old Spot Pork & Sausages.
Goat Meat, Milk, Cheese, Lamb. Bakery. Eggs.
Pies. Savouries. Preserves. Cakes. In season Veg. Plants.
Books. Crafts. Jewellery. Collectables. Gifts. Toys.
Bric-a-Brac.

Something new every month.
Delicious locally sourced refreshments.

Find us on Facebook, Instagram and www.bleadon.org.uk/market

Walking on to happiness

As the great Helen Shapiro almost sang

By Les Masters

Bleadon is fortunate to have a varied and extensive network of footpaths, greatly appreciated by numerous residents.

This network was particularly enjoyed during our first lockdown in 2020, many paths being a revelation to people who had hitherto done very little walking. Practically every day Facebook contained pictures of local scenes posted by grateful walkers. Did they stop to wonder how we came to be so lucky?

One simple reason is the geography of the village, offering easy walks across level fields or along the river together with a mixture of hills with stunning views. Less obvious is that when the network came into being in the age of the horse and cart it was functional, not recreational. Each path was the route from one part of the village to another, or the route to another village.

Farms were connected by footpaths. South Hill Farm was the first of a row of six working farms within about a mile. Workers living in the cottages in Bridge Road simply walked to work along the paths.

A path led over South Hill to the church, school and post office. Probably the most heavily used path, then as now, was the one from Purn Way to Rectory Lane. Purn Way and Chestnut Lane housed quite a population, as witnessed by the number of stone farmhouses and cottages, so Sundays must have seen quite a procession. Since our post office was relocated the path has become a route in the opposite direction.

Some of the routes were longer and more demanding. The farms round the foot of Purn Hill were connected by footpath or bridleway to Flatroof Farm on Bleadon Hill, which ceased to be a working farm when the estate was built. Purn Hill is now a much-loved recreational destination, though for residents of Bleadon Hill it can also be functional, providing a pleasant route to the shop and cafe. Much more challenging were the paths to Hutton.

One starts in Purn Way, cuts across Celtic Way, reaches Roman Road in the dip, then runs diagonally across the golf course and down through the woods into Hutton. Another leads across South Hill to Wonderstone, then up Hellenge Hill to Roman Road. A visit to friends or family in Hutton was hard work but there was no alternative way.

The West Mendip Way runs right through the parish, so it is not surprising to see serious walkers kitted out with stout boots, nordic poles, maps and rucksacks heading up Shiplate Road towards Hellenge Hill. Similarly Bleadon features on a good many recommended walks, often starting from the lay by near the far end of Roman Road, descending Mearcombe Lane and following the old workers' paths parallel to the river.

The network has been considerably improved during the last thirty years. More routes are accessible, the signage is better and many stiles have been replaced by kissing gates, much more easily negotiated by older people and the owners of large dogs.

The vertical steel ladder at the wall on the bend in Celtic Way has been superseded by a wide wooden staircase. The slope from South Hill down towards the church yard used to be treacherous in winter until the first steps were installed in a triumph of local voluntary teamwork. The idea of cutting steps, reinforcing them with timber and filling them with chip-pings came from a teacher who lived in Manor Villas, Andy Ballard.

The parish council provided the money for the timber and the chippings were donated by the quarry. Malcolm Hillyer from South Hill Farm collected a trailer load and drove it firstly to School Lane, where half the load was dropped to be spread along the lower part of the path - by volunteers, naturally.

He then drove up Shiplate Road to the end of The Veale, turned right on to South Hill, turned right again along the top and dropped the other half at the top of the slope. He did not invoice the council. Then Andy set to work (it was school holidays), assisted by Scott Morris, then still at school. A good deal of maintenance has been required since then, of course.

The Purn Way/Rectory Lane path also required significant maintenance to prevent it being turned into a mud heap in winter.

Tons of stones were spread over the path by volunteers, slowly but inexorably sinking into the soil so that a repeat dose was needed. The treatment seems to have worked, though puddles gather after wet weather - which brings me to my last point. This is the countryside, so we cannot expect tarmac everywhere we like to walk. Accept this and make the most of our inheritance.

Final tech support session

By Sara Hughes

The final Tea and Tech session is due to take place in the Church Room, in Coronation Road, on Wednesday 14 September.

The event, which runs from 2-4pm, provides people with a one-stop-shop for questions about dealing with your hand-held devices—and a lovely spot of tea!

If you are interested, please give Sara Hughes a call on 811008 or email sara.hughes6@btinternet.com

By getting in touch in advance, Sara and her team will be able to ensure the right amount of support is available, as well as a sufficient amount of cake!

If you are a local technician or would like to volunteer to help, please contact Sara in the first instance.

Thank you for the bunting

By Sara Hughes

Thank you to all the ladies who helped with the community bunting making project for the Queen's Platinum Jubilee.

We made up almost all the 500 yards of linen tape bought for the project and someone even bought more to make the village beautiful.

A lot of lovely ladies contributed in a number of different ways and we got it done in time!

Thank you too to Keith Pyke and his team for putting it up in the streets and in the Coronation Halls to make the village cheerful and welcoming!

A special thanks to Tracey Heppenstall for allowing a bunting making box in Escape Hairdressers for pick-up and drop-off of packs, this was very helpful for me, as coordinator.

We hosted six bunting-making workshops in the Church Room ahead of the event. Some people were helping at the Craft & Chat meetings and a lot of people took flag making packs and bunting making packs home and transformed them into the beautiful streams of bunting which could be seen throughout the village during the Jubilee.



Mark Howe

Gardening Services

9 Malvern Road, Weston

Regular grass cutting

Hedges and trees cut

Fences erected or repaired

GET IN TOUCH TODAY!

01934 413594

07773 272003

Turfing

Fence painting

Power washing

Bleadon WI and Belles

by Veronica Hoare

Bleadon WI has had a busy summer.

One of the highlights was a trip to Hinkley Point, where we were taken on a guided tour of the site.

Our guide was a Danish Lady. As she put it, she was just like the girl next door who could explain everything without being too complicated. The tour was followed by lunch at nearby Blackmoor Farm. We were seated at large tables and served a delicious farmhouse type meal with lashings of everything including cream.

Kate James who organised this trip has plenty more good ideas up her sleeve! Our three book clubs are providing popular, reading such topical things as 'The Queens Gambit' and 'Heatwave'. We have a Creative Writing Group starting in September.

We continue to support The Food Bank and to raise money for the Air Ambulance. Because some of our own members have been scammed we are having advice on how to guard against these evil scammers at our September meeting.

Many members are looking forward to The August Garden Party which will be held at our President, Michelle Harper's home. This will include good food and a silent disco. No wonder we have over 100 members!



by Jo Jones

What a lovely afternoon was had by The Bleadon Belles and friends at their Summer Tea Party on 10 July. There was a good turnout for music, tea and cake in spite of the heat and it was lovely to have the audience joining in with gusto!

Thank you to Naomi our Musical Director, who was a lovely compere, conductor and singer, together with accompanist Kevin Joint.

There were brilliant performances from Liz, Jill, Lucy, Lily, Daniel, Matt, Bori, Naomi and of course the Belles. Some amazing young talent was displayed and really appreciated by all.

Thank you to everyone who came and supported us. Flowers, cake and refreshments were provided by the Choir and WI members. It was a great success and raised over £300 for the Great Western Air Ambulance charity.

After our summer break we are back to rehearsals in September, when among other things we will be preparing for the WI Christmas Carol Service at Bleadon Church.

Good news! Kevin Joint is joining the Bleadon Belles from September! We feel very lucky to have Kevin as our accompanist.

A former music teacher, Kevin is a popular accompanist in the Weston area and also plays the organ at St Peter and St Paul's Church, Bleadon. Naomi and the Choir look forward to working with Kevin who will support us at rehearsals and performances.





Contact Ellie

Do you want to enquire about advertising? Maybe you have an article you would like to consider for inclusion in the next edition? Contact me at bleadonnewseditor@gmail.com

I may not answer straight away due to other commitments but I will get back to you!

Beat report

By Michael Benfield

With the good weather here, we would like to remind everyone to keep up with home security.

Keep windows and doors closed if your not In easy reach of the area.

If you are in the rear garden, keep front windows closed.

Remember to put any garden equipment or children's toys away at night and close and lock gates.

Be aware of any suspicious vehicles or persons in the area.

Report any concerns that you have via 101 or through our online form .



Your recycling and waste collection day is

WEDNESDAY

recycle <small>by North Somerset</small>	Recycling, food waste and rubbish	Recycling and food waste	Recycling, food waste and rubbish	Recycling and food waste	Recycling, food waste and rubbish	Recycling and food waste
Aug-22		3	10	17	24	31
Sep-22	7	14	21	28		
Oct-22	5	12	19	26		
Nov-22	2	9	16	23	30	

Put your containers out by 6.30am on collection day. Collections can take place until 5pm.
Rubbish is collected every other week.

You can report missed collections or order replacement containers at www.n-somerset.gov.uk/connect

For general information about recycling and waste visit www.n-somerset.gov.uk/recycling

30758 121

Saturday 24th September 2022

@ The Winter Gardens

630pm until late

Tickets £45, including 3 course meal and welcome drink.

Music from SIX MACHINE

For tickets contact

bleadonball@gmail.com

Find us on Facebook

Bleadon Ball

THE
Bleadon Ball

HOSTED BY BLEADON WI



In aid of the Great Western Air Ambulance



Bus timetable



50

Worle - WSM Centre - Hutton

Stagecoach West

Timetable valid from 24/04/2022 until further notice.

Direction of stops: where shown (eg: W-bound) this is the compass direction towards which the bus is pointing when it stops

Mondays to Fridays

Saturdays

Bleadon, Bridge Road (E-bound)	0728	0828	0928	1028	1128	1228	1328	1428	1528	1628	1728	1828	1928	0728	0828	0928	1028	1128
§ Bleadon, The Queens (N-bound)	0729	0829	0929	1029	1129	1229	1329	1429	1529	1629	1729	1829	1929	0729	0829	0929	1029	1129
§ Bleadon, Clovercat (N-bound)	0729	0829	0929	1029	1129	1229	1329	1429	1529	1629	1729	1829	1929	0729	0829	0929	1029	1129
§ Bleadon, Roman Road (NW-bound)	0730	0828	0930	1030	1130	1230	1330	1430	1530	1630	1730	1830	1930	0730	0828	0930	1030	1130
§ Bleadon Hill, Totterdown Lane (W-bound)	0732	0828	0932	1032	1132	1232	1332	1432	1532	1632	1732	1832	1932	0732	0828	0932	1032	1132
§ Bleadon Hill, Purn Lane (W-bound)	0732	0828	0932	1032	1132	1232	1332	1432	1532	1632	1732	1832	1932	0732	0828	0932	1032	1132
§ Bleadon Hill, Burnham Close (N-bound)	0732	0828	0933	1033	1133	1233	1333	1433	1533	1633	1733	1833	1933	0732	0828	0933	1033	1133
§ Bleadon Hill, Brockley Crescent (E-bound)	0733	0828	0933	1033	1133	1233	1333	1433	1533	1633	1733	1833	1933	0732	0828	0933	1033	1133
§ Bleadon Hill, Maldstone Grove (NE-bound)	0734	0828	0933	1033	1133	1233	1333	1433	1533	1633	1733	1833	1933	0734	0828	0933	1033	1133
§ Oldmixon, Broadway Lodge (N-bound)	0734	0828	0934	1034	1134	1234	1334	1434	1534	1634	1734	1834	1934	0734	0828	0934	1034	1134
§ Oldmixon, Hillside (E-bound)	0734	0828	0934	1034	1134	1234	1334	1434	1534	1634	1734	1834	1934	0734	0828	0934	1034	1134
§ Oldmixon, Winterstoke Road (E-bound)	0734	0828	0935	1035	1135	1235	1335	1435	1535	1635	1735	1835	1935	0734	0828	0935	1035	1135
§ Hutton, Oldmixon Road (E-bound)	0736	0828	0936	1036	1136	1236	1336	1436	1536	1636	1736	1836	1936	0736	0828	0936	1036	1136
§ Hutton, Warren Close (E-bound)	0737	0828	0937	1037	1137	1237	1337	1437	1537	1637	1737	1837	1937	0737	0828	0937	1037	1137



50

Hutton - WSM Centre - Worle

Stagecoach West

Timetable valid from 24/04/2022 until further notice.

Direction of stops: where shown (eg: W-bound) this is the compass direction towards which the bus is pointing when it stops

Mondays to Fridays

Saturdays

Hutton, Holm Road (S-bound)	—	0745	0845	0945	1045	1145	1245	1345	1445	1545	1645	1745	1845	—	0745	0845	0945	1045
§ Hutton, Warren Close (W-bound)	—	0746	0846	0946	1046	1146	1246	1346	1446	1546	1646	1746	1846	—	0746	0846	0946	1046
§ Hutton, Oldmixon Road (W-bound)	—	0747	0847	0947	1047	1147	1247	1347	1447	1547	1647	1747	1847	—	0747	0847	0947	1047
§ Oldmixon, Hillside (W-bound)	—	0749	0849	0949	1049	1149	1249	1349	1449	1549	1649	1749	1849	—	0749	0849	0949	1049
§ Bleadon Hill, Brockley Crescent (W-bound)	—	0750	0850	0950	1050	1150	1250	1350	1450	1550	1650	1750	1850	—	0750	0850	0950	1050
§ Bleadon Hill, Burnham Close (S-bound)	—	0751	0851	0951	1051	1151	1251	1351	1451	1551	1651	1751	1851	—	0751	0851	0951	1051
§ Bleadon Hill, Burnham Drive (NW-bound)	—	0751	0851	0951	1051	1151	1251	1351	1451	1551	1651	1751	1851	—	0751	0851	0951	1051
§ Uphill, Bleadon Hill (S-bound)	—	0752	0852	0952	1052	1152	1252	1352	1452	1552	1652	1752	1852	—	0752	0852	0952	1052
§ Bleadon, Anchor Inn (SE-bound)	—	0754	0854	0954	1054	1154	1254	1354	1454	1554	1654	1754	1854	—	0754	0854	0954	1054
§ Bleadon, Purn Way (NE-bound)	—	0755	0855	0955	1055	1155	1255	1355	1455	1555	1655	1755	1855	—	0755	0855	0955	1055
Bleadon, Bridge Road (E-bound)	—	0756	0856	0956	1056	1156	1256	1356	1456	1556	1656	1756	1856	—	0756	0856	0956	1056
§ Bleadon, The Queens (N-bound)	—	0757	0857	0957	1057	1157	1257	1357	1457	1557	1657	1757	1857	—	0757	0857	0957	1057
§ Bleadon, Clovercat (N-bound)	—	0757	0857	0957	1057	1157	1257	1357	1457	1557	1657	1757	1857	—	0757	0857	0957	1057
§ Bleadon, Roman Road (NW-bound)	—	0758	0858	0958	1058	1158	1258	1358	1458	1558	1658	1758	1858	—	0758	0858	0958	1058
§ Bleadon Hill, Hillside (W-bound)	—	0759	0859	0959	1059	1159	1259	1359	1459	1559	1659	1759	1859	—	0759	0859	0959	1059
§ Bleadon Hill, Totterdown Lane (W-bound)	—	0800	0900	1000	1100	1200	1300	1400	1500	1600	1700	1800	1900	—	0800	0900	1000	1100
§ Bleadon Hill, Purn Lane (W-bound)	—	0800	0900	1000	1100	1200	1300	1400	1500	1600	1700	1800	1900	—	0800	0900	1000	1100

View the rest of the table at <http://journeyplanner.travelwest.info/routes/region/3>

BLEADON CHRISTMAS MARKET

Saturday 3rd December 9.30 - 12.30

**Bleadon Coronation Halls BS24 0PG
Youth Club Hall & Church Room**

**Over 50 festive stalls - RAFFLE - refreshments
something for everyone**

**Limited parking at halls, please park safely in village
and walk, its not far!**



Heritage Open Days festival

By North Somerset Council

Discover Weston-super-Mare's heritage for free as sites across the town get ready to welcome visitors between Friday 9 and Sunday 18 September. This is part of Heritage Open Days, England's largest heritage festival.

Event highlights, some of which celebrate this year's 'outstanding inventions' theme, include:

- **Explore the invention of Lego while discovering more about women's suffrage at Weston Library.** Visitors are encouraged to take a selfie with 'Hope', a life size suffragette made from 32,327 Lego bricks, and children can take part in activities to create their own outstanding inventions.
- **Learn about the history of the Pride flag at the Proud Bar.** Since its invention 44 years ago, the Pride flag has become the global universal symbol of LGBTQ+ communities. Find out more about the Pride flags, how they have evolved and what they represent.
- **Discover post-war inventions at Walker & Ling.** Join Weston's oldest independent family-run department store as it celebrates its 130th birthday. Explore its history and inventions including Lamson pneumatic cash tubes and the first passenger lift in Weston-super-Mare – still in use today!
- **Celebrate creative inventions in prehistoric style at this year's Whirligig Festival.** Get transported back to the days when dinosaurs roamed the earth with a prehistoric spectacle guaranteed to make modern jaws drop. Part of Theatre Orchard's annual Whirligig Festival, 'SAURUS' by Close-Act Theatre Company is a unique, large-scale street theatre experience.
- **Weston walks.** Follow the blue plaque trail, stop off at Ellenborough Park West and learn more about architect Hans Price. Go behind the scenes at Grove House without leaving home with a virtual tour.
- **Weston talks.** Find out more about Weston's Heritage Action Zone, meet Birnbeck Regenera-

tion Trust, go backstage at The Blakehay Theatre and discover the history of The Old Thatched Cottage, Weston's oldest building.

- Access All Saints Church and the town's Victorian neo-gothic cemetery chapel.
- Learn more from a wealth of free online heritage resources.

Councillor Mark Canniford, North Somerset Council's executive member for placemaking and economy, said: "There's something for everyone in this year's Heritage Open Days festival – ten days of free tours, walks, talks, exhibitions, open days and performances across the town.

"Come along and enjoy! Thanks to all the organisations and businesses taking part. Showcasing these events wouldn't be possible without financial support from Historic England as part of our High Street Heritage Action Zone work."

North Somerset Council's heritage and regeneration champion, Councillor John Crockford-Hawley, added: "Heritage Open Days enable people to find out more about Weston and its rich heritage in a fun and creative way. I encourage everyone to take the opportunity to get involved and learn more about our town's history."

A programme of Heritage Open Days events can be viewed or downloaded at www.n-somerset.gov.uk/heritageopendays22.

Weston-super-Mare
Heritage Open Days 2022
Friday 9 September to Sunday 18 September
www.n-somerset.gov.uk/heritageopendays22

Quarry plans move forward

by Weston Mercury

A former quarry in Bleadon is set to be developed—with 42 new homes planned on the site by the new owners.

Formerly owned by landscaping firm Marshalls, the eight-acre site is set to be given a new lease of life after being secured by house-building group, Edenstone. Outline planning permission has been secured for 42 new homes, as well as up to 500sqm of flexible-use space on the plot, four miles from Weston-super-Mare.

Edenstone has confirmed it intends to redevelop the site for residential purposes, the details of which will be subject to a reserved matters planning approval. It is currently working up plans with a view of submitting the application later in the year.

Edenstone Southern's land director, James Morgan, said: "We are delighted to have uncondi-

tionally secured this site—our second in Somerset—which comes after six months of good-natured and positive negotiation with Marshalls.

"Subject to planning, we hope to start work on site in the spring of 2023. This will mark another important step in our growth in the South West region, alongside developments in Sampford and East Brent.

"We continue to be actively pursuing greenfield and brownfield sites in the region and confidently expect to announce the acquisition of further new sites in the very near future."

An outline planning application for homes on the site was approved by North Somerset Council in March last year.

The scheme included plans for a children's play area, as well as 42 homes, 13 of which would be affordable housing.

The See Monster awakens!

by North Somerset Council

The hotly anticipated See Monster awakened over bank holiday weekend!

The 35m-high structure, making up part of the Unboxed: Creativity In The UK Festival, was lit up over the August Bank Holiday weekend with three free drone shows.

Working with Skymagic, whose work includes the Queen's Platinum Jubilee, the Birmingham 2022 Commonwealth Games, and the famous London New Year's Eve display, the magical moments lit up the Weston-super-Mare sea front and told the story of the See Monster's journey.

The former oil rig was transported via barge to the Weston coast from the North Sea and celebrates environmentally friendly action.

The See Monster is one of 10 major creative projects commissioned as part of the festival, with New Substance leading on the creation of the former oil rig turned tourist attraction.

The See Monster is due to open to the public at the end of September so make sure you head down to Weston's Tropicana to see the See Monster for yourself!



Bleadon Youth Club

We saw record numbers of youngsters turning up for the Thursday evening youth club sessions before the summer break. With around 29 members attending each week this was a new high for the club in recent years. The fine summer evenings helped, of course.

The youth club returns to its regular Thursday evening slot on 8 September, so let's hope that we can maintain this level of interest.

As the nights begin to draw in towards Autumn we can expect a shift towards more indoor social activities. Table tennis, table football, pool, table-top games, video games and cooking are always high on the activity menu for the youngsters. Some will prefer to just chill and chat on the sofas. For all the youngsters the tuck shop is a big attraction.

The youthful YMCA leadership are always there to provide a sympathetic ear, encouragement and independent advice.

If you've got a youngster aged 10 to 17 years who wants to break away and have some independent time with friends just pop them along on a Thursday evening between 7 and 9pm.



We ask that all parents/carers register their child so that the YMCA have full contact details. Simply scan this QR code to get in touch with the YMCA.

Now the youth club need your help

The Bleadon Youth Club is a registered charity managed in a "light touch" way by a small team of local volunteers who make up the Management Committee. Their role is to manage and maintain the youth centre building (the youth club own the building) and to commission youth service provision for the Thursday evening sessions. The running of the youth club on a Thursday is left entirely to the YMCA.

As well as meeting once every couple of months the management committee raises funds, manages casual and regular lettings of the building and looks after the fabric of the building.

It's not an onerous or demanding task and it ensures that Bleadon has a youth centre it can be justifiably proud of.

We are looking for some fresh faces to join the management committee. **If you can help us look after the young heart of Bleadon we should love you to join us.**

To find out more or to express interest in joining the small, but beautifully formed team, please contact Keith : keith.pyke@btopenworld.com or call 01934 813 127.



More than a youth club

As well as providing a safe and colourful venue for the weekly youth club, Bleadon Youth Centre provides a perfect village centre venue for all kinds of young-at-heart activities.

From music practice for the U3A, table tennis club, dance practice, toddler care, to puppy and dog training twice weekly.

To find out more about hiring this venue for your activities and special events contact: keith.pyke@btopenworld.com



A late Platinum Jubilee thank you

I never got the chance to thank a lot of people after the June Platinum Jubilee celebrations were over. That's my bad. Down to the sheer relief that despite the weather we managed to pull off a successful Big Lunch and everyone appeared to have a good time.

So now is the time to say a rather late BIG THANK YOU to all those who helped on the day, before and after.

- The dozen or so helpers who turned up on the day to lay out tables and chairs. Somehow wrestling over 220 seated places into the two Coronation Halls. Then cleared them all away afterwards.
- The ladies who prepared and provided the delicious Platinum Pudding. Dishing out over 200 free puddings fit for a Queen.

- The many villagers who hand crafted the hundreds of metres of bunting that coloured our Jubilee village streets.
- Sue and Megan who managed to get even the most left-footed of us to line dance - brave try.
- The band - 52nd State - who entertained us brilliantly for hours for free. Many of the band members came from Bristol at their own expense. Didn't charge us a thing for their time, enthusiasm and talents. Thanks to villagers Rob and Megan for arranging 52nd State.

There will be others who I haven't mentioned, plus the many of you who supported our week of celebrations. Thank you for helping make our little village very, very special.



A BLEADON PLAYERS THRILLER
WITH KIND PERMISSION FROM CONCORD THEATRICALS

WAIT UNTIL DARK

WRITTEN BY: **FREDERICK KNOTT**

BASED ON THE 1967 FILM FEATURING AUDREY HEPBURN

22ND TO 24TH SEPTEMBER 2022

CONCORD

'Trifle-y' exciting rescue

By Pauline Kidner

A call to Secret World Wildlife Rescue at East Huntspill over the weekend was received from a local firm that makes desserts.

A greedy herring gull was attracted to a container of waste jam and custard and managed to dive in before the lid was closed. A member of our staff went out to rescue the bird which by now was a hue of red and yellow and rather smelly.

Managing to catch the bird with a net and placed in a box so as not to contaminate the ambulance, the bird was soon on its way to us for a shampoo and blow dry!

Quite pleased to not be such a sticky mess, the herring gull will stay at the centre for a few days to preen and build up the natural oils to protect his feathers. He is now a much happier Gull!

Sadly, since this rather amusing rescue, we have had to close our doors to swans, sea birds and waders. It has had a really upsetting for our staff as it has made us powerless to help any birds in these categories.

The incidence of avian flu has increased and remained with us through the summer although normally once the migrating birds leave after the winter, we don't normally see outbreaks continuing to occur. One case most recently was in Tiverton.

We are still managing to accept garden birds and birds of prey but only by wearing full PPE when they arrive and then isolating them before they enter the rehabilitation rooms in our treatment centre.

If we were to have a case of avian flu, all our birds on site would be killed including peacocks, parrot, resident birds of prey

and emu. We would probably be unable to continue as a rescue centre for many months up to a year.

This would mean that we wouldn't be able to help anything if this was to happen, so we have to protect the animals we already have on site.

I'm sure many of you have heard of the terrible effects on seabirds nesting on cliffs around the coast with as many as one third dying from the disease.

We hope you will understand our actions. We remain open to help all other species and will reverse our decision as soon as it is safe to do so.

For advice and help telephone 01278 783250.



MOBILITY EQUIPMENT

Scooters
Powerchairs
Wheelchairs
Stairlifts
Rise & Recline Chairs
Walking Aids / Bathroom Aids
Pressure Cushions
Incontinence Products
Cosyfeet Slippers & Shoes
We Service & Repair Scooters etc

0% finance available on selected scooters

Wilmott mobility

6 Pages Court
High Street
Yatton
BS49 4EG

Ample free parking but if you cannot get to us we are happy to come to you!

Tel: 01934 838363
www.wilmottmobility.co.uk

News from the Bleadon Farm Shop

by Charlotte and Alistair House

MENU

Happy customers have been tucking into a variety of treats and daily specials on offer at the café, which has remained open later during the school holidays.

Many who enjoyed our Platinum platters during Jubilee week returned for Wimbledon platters – this time with tennis balls for decoration, Pimms, jelly trifles and cucumber sandwiches. We will be continuing with our themed platters, with more due to be announced soon.

We have extended the range of gluten-free, dairy-free, vegetarian and vegan meals. Our fabulous cooks are happy to adapt your meal to suit, so just ask.

NEW PRODUCTS

We are very excited to launch our House Gin (see what we did there?!) called Community Spirit. We think this sums up our ethos perfectly.

Since rescuing the Post Office from closure in 2005, we have evolved into something we are very proud of.

It has become a real community centre, complete with shop, Post Office, butchery and café; a place of meetings, celebrations, free advertising and a chat!

Against the challenging backdrop of rising food prices, it seems appropriate to introduce a new product, uplifting Community Spirit in the form of our House Gin.

Keep an eye out for the launch in September!

BOOKINGS

Our 'top room' is now booked for several groups, both regular and occasional, so do consider us as an option for a small bespoke 'do'.

Your booking can include food, drinks and service or just the room, it's our pleasure to make your

event personal.

Similarly, we are able to cater for outside events.

Call Bev on 01934 815584 to discuss your requirements, or to book for lunch.

OPENING TIMES

Shop times will change by just one hour on a Saturday morning, opening at 9am in alignment with Sundays.

This comes into effect on Saturday 3 September.

The Post Office is open from 9am-5.30pm on weekdays and 9am-1pm on Saturdays.

These are all available on our website www.bleadonfarmshop.co.uk

Please don't search for Bleadon Café or Bleadon Post Office, we are the Bleadon Farm Shop!



Meet the team

Post Office clerks: Manshu, Rachael, Tracey, Amanda, Peter and Anne

Shop staff: Jay, Kelly, Nikki, Helen, Mir, Lorna, Amy and Deb

Cooks: Bev, Steph, Ali and Jess

Café staff: Annie, Cici, Helen, Maxine and Mollie

Learning on the job...

10 reasons to consider an apprenticeship

Learning and earning at the same time, in a job that provides a fulfilling career, sounds appealing, right?

What's not to like about the thought of working for one of Somerset's most progressive companies, earning a wage, while at the same time studying for a recognised industry qualification?

Becoming an apprentice at family cider maker Thatchers offers young people just that. And now's the time to start thinking about it, as applications for Thatchers Early Careers Apprenticeship Scheme open in February 2023.

This year, Thatchers is looking to double its intake of apprentices, with opportunities ranging from cider making (yes, you could be part of the team making Thatchers' award-winning ciders), to roles within our commercial teams, such as sales and marketing, to hospitality where you could learn the skills of a Commis Chef or experience the buzz of working front of house at The Railway Inn.

Here's ten reasons why an apprenticeship could be for you:

- 1. Earn while you learn**
- 2. Gain hands-on experience in a commercial environment**
- 3. Study for relevant, industry-focussed qualifications**
- 4. Award-winning training from Weston College and Bridgwater & Taunton College**
- 5. Real career and development opportunities with a planned progression route**
- 6. No cost to you**
- 7. No university fees or loans to pay back**
- 8. Access to resources and support systems**
- 9. Get a feel for a real work environment and enhance your CV**
- 10. Be part of the Thatchers family and an award-winning, growing brand**

Check out our website at www.thatcherscider.co.uk/careers to register for more details about our Early Careers Apprenticeships.



WELCOME TO MYRTLE FARM.

HOME OF THATCHERS CIDER.

Experience our complete range of ciders in our cider shop here at Myrtle Farm. Try our traditional ciders and explore our exclusive, award winning Cider Barn collection. Or join us at the Railway Inn for some delicious food and a friendly atmosphere.

EST. 1904
THATCHERS
— THE FAMILY CIDER MAKERS —

**PLEASE CHECK OUR WEBSITES
FOR OPENING TIMES.**

Thatchers Cider Company, Myrtle Farm,
Sandford, Somerset, BS25 5RA
Visit: www.thatcherscider.co.uk/myrtle-farm
Tel: 01934 822862

Railway Inn, Sandford,
Somerset, BS25 5RA
Visit: www.therailwayinn.com
Tel: 01934 611518

Puzzle page answers

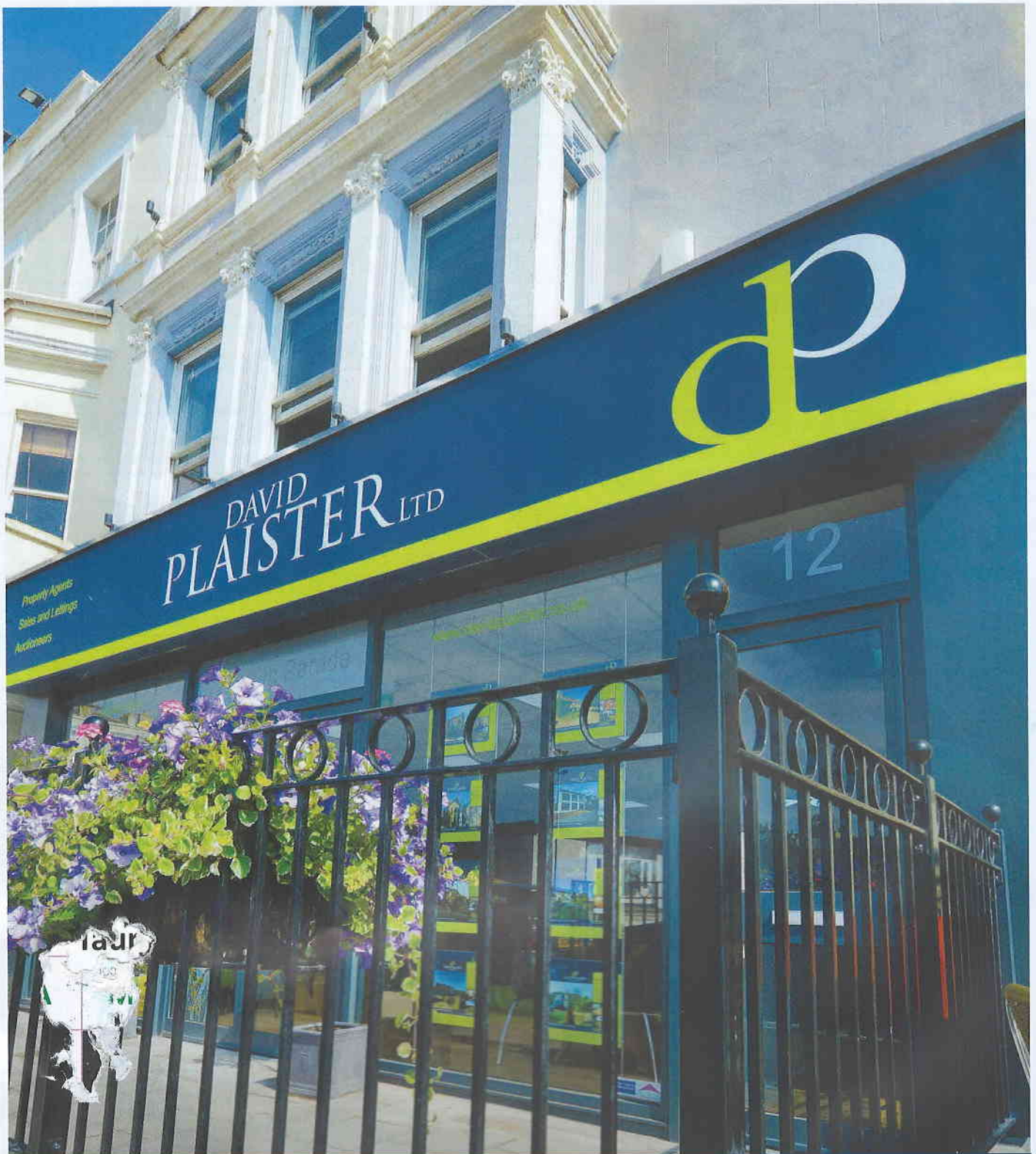
L	O	I	T	E	R	E	D			S		F
A		N		P		X		S	C	O	N	E
P	E	T	T	I	C	O	A	T		L		L
E		O		C		T		A		I	L	L
L	A	N	E		F	I	L	L	E	D		O
		E		Q		C		L				W
R	A	D	I	U	S		R	E	V	U	E	S
A				A		O		D		N		
P		O	F	F	E	R	S		I	D	O	L
I	N	N		F		A		G		E		O
C		S		E	C	C	E	N	T	R	I	C
A		E	N	D		L		A		G		K
L		T			D	E	S	T	R	O	Y	S

**Many thanks to all
contributors and advertisers
for your ongoing support.**

WHAT'S ON IN BLEADON?

Coronation & Jubilee Halls Bookings	Robin Flavell	01934 812218	07724 010715	bleadoncoronationhalls@gmail.com
Youth Centre Bookings	Keith Pyke	01934 813127		keith.pyke@btopenworld.com
Monday 9.30-10.30am Jubilee Room Yoga	Cheri		07717 290708	info@uniquebalance.co.uk
Monday 1.15-4.30pm Coronation Hall Bridge Club	Doug Norfolk	01934 812128	07547 163862	dougn@btinternet.com
Monday 7-7.50pm & 8-8.50pm Jubilee Room Aerobics	Marie Keele	01934 270853	07939 038071	mariekeele@hotmail.co.uk
2nd Monday 7.00pm Coronation Hall Bleadon Parish Council	Kirsten Hemingway (Chair) Bruce Poole	01934 815540	07710 098804	kirstenhemingway@bleadonparishcouncil.co.uk parishclerk@bleadonparishcouncil.co.uk
3rd Monday 7-10pm Coronation Hall Holistic Therapy	Debbie Thorne		07905 537118	debbiethorne37@hotmail.com
4th Monday 7-9pm Coronation Hall Shamanic Meditation	Shaylan Wilde		07825 678751	wilde.spirit@outlook.com
Tuesday 10-11am Jubilee Room Tai Chi (over 60s)	Age UK	01823 345626		ageingwell@ageuksomerset.org.uk
Tuesday 10.30-12.30 Coronation Hall Art Class	Tina Dodd	01934 843660		sandtdodd@btinternet.com
1st, 2nd, 4th & 5th Tuesday Sept-May Photographic Group	Trevor Hartgroves Mark Frisby	01934 239011 01934 812573	07796 693032	t.hartgroves@sky.com marknfrisby@yahoo.com
3rd Tuesday Oct-Jun 7- 9pm Coronation Hall + Spring & Summer shows Horticultural Society	Libby Boucher Rose Benjamin		07966 563495	libbyboucher2003@gmail.com
Tuesday 7.30 - 9pm Jubilee Room Women's Institute Choir	Bev Riddell Maggie Heath	01934 811218 01934 813050	07970 475626 07761 102934	riddell2en@btinternet.com
Tuesday 2.30-4.30pm (Sept-May) Short Mat Bowls	Friday 7-9pm Jubilee Room Kevin Barrett	01934 811267	07855 225049	kevinbarrett240@btinternet.com
Wednesday 10-11am Jubilee Room Tai Chi	Rachel Jelbert		07760 663614	rachel@equilibriummeditation.co.uk
Wednesday 11.30am-12.30pm Jubilee Room Stay Strong, Stay Steady	Age UK	01823 345626		ageingwell@ageuksomerset.org.uk
Wednesday 4.45-5.30pm Jubilee Room Dance with Georgia	Georgia Forte		07413 171714	dancewithgeorgiak@gmail.com
Wednesday 7-8pm Jubilee Room Pilates	Corinne Mutlow		07919 532960	coz@cmutlow.com
Wednesday 7.30pm + shows in January, May & September Bleadon Players	Peter Gibbon		07859 001468	peter@mpgifa.co.uk
Thursday 9:30-11:30 Term times Babies & Toddlers Group	Coronation Hall Sophie Macey			Facebook group: Babies & Toddlers in Bleadon
Thursday 10-12noon Jubilee Room Bleadon Art Group	Stevie Rhodes	01934 813497		
Thursday 2-4pm Oct-April Coronation Hall WSM Croquet club / Whist	Sue Norfolk	01934 812128	07484 233086	suenorfolk99@gmail.com
Thursday 6.15-7.15pm Jubilee Room Yoga	Sayeeda Alam		07725 901810	info@sadayoga.co.uk
1st Thursday 7.30pm Coronation Hall Weston Music Society Concert	Jo Lucas	01934 812759		no emails
2nd Thursday 7:30pm Coronation Hall Women's Institute	Elaine Mellor (Secretary) Michelle Harper (President)		07854 628664 07780 688830	bleadonwi@hotmail.co.uk harper.a5@sky.com
3rd Thursday 7.30pm Coronation Hall Bleadon Coronation Halls Management Committee	Betty Paterson (Chair) Ian Gibson (Treasurer) Kevin Barrett (Secretary)	01934 812183 01934 814261 01934 811267	07855 225049	gilbet.paterson@btinternet.com igibson6@sky.com kevinbarrett240@btinternet.com
4th Thursday 7.15 - 9.15pm Jubilee Room Bleadon Sugarcraft Club	Sue Dennyly		07891 996707	bleadonsugarcraftclub@gmail.com
Friday 9.30-10.30am Jubilee Room Pilates	Emma Hunter		07787 563775	emma@ehsportstherapy.com
Friday 2-4pm Coronation Hall Friendship Group	Gordon Brown	01934 811926		no emails
3rd Saturday 9am-12.00pm (both halls) Bleadon Village Market	Jo Jones	01934 812370		jojonesbleadon@fiscali.co.uk
YOUTH CENTRE Monday 10:30am-12:30pm Tuesday & Friday 5:30pm Tuesday 8:30pm Wednesday 7-10pm Thursday 7-9pm	Recorder group (U3A) Tricky Paws Dance the Night Away Veterans Table Tennis Youth Club	Louise Harwood Carrie-Anne New Sharon Insley Ann Sandford Keith Pyke	07502 285547 01934 813127	harwoodlouise@hotmail.co.uk trickypawssuk@gmail.com ann@sandford-ca.co.uk keith.pyke@btopenworld.com
CHURCH ROOMS 2nd & 4th Monday 10:00am Tuesday 5:30pm	Craft & Chat Brownies	Sara Hughes Jacqui Hall-Scott	01934 811008 07730 498371	j.hallscott@btinternet.com





Property Agents
Sales and Lettings
Auctioneers

DAVID
PLAISTER LTD



12

169



DAVID PLAISTER

PROPERTY AGENTS | SALES & LETTINGS | AUCTIONEERS

01934 815053

www.davidplaister.co.uk