

# Bleadon News



## Jubilee Special

Issue 122

July 2022

# George's crossword

## ACROSS

- 1. Hobb's Boat overdue? It's the other side of 13 down (8)
- 7. Right axle broken? Take it easy (5)
- 8. Path, a cure for a soft landing (9)
- 9. Knotted dead heat (3)
- 10. Slap-up mountains (4)
- 11. Upsets may light fires (6)
- 13. Writer around a street may serve meals (6)
- 14. Gets rid of left-overs (6)
- 17. Resist a nun out of order (6)
- 18. Mars bears weapons (4)
- 20. A New Testament worker (3)

## DOWN

- 1. Ape is a funny colour maybe (5)
- 2. Rush in one right spurt (7)
- 3. Secure some hair (4)
- 4. Powerful suit for prominent US family (6)
- 5. Level apartments (5)
- 6. Former temporary shelters over wide areas (7)
- 7. Consider what a mirror does (7)
- 12. Metal that is a golf club (7)
- 13. Bald one perhaps has named road after 1 across (7)

1		2		3		4			5		6
							7				
8											
								9			
10					11						
				12							
13							14		15		
					16						
		17						18			19
20							21				
				22							
23											
					24						

- 15. A looser spray perhaps (7)
- 16. Delicate offer (6)
- 17. Sober good man brings help (5)
- 19. Street tune may go up or down (5)
- 21. A French refusal soon (4)

## Riddle me this...

**Riddle one:** What gets bigger when more is taken away?

**Riddle two:** Where does today come before yesterday?

**Riddle three:** If you've got me, you want to share me; if you share me, you haven't kept me. What am I?

**Riddle four:** It belongs to you, but other people use it more than you do. What is it?

			2	6		7		1
6	8			7			9	
1	9				4	5		
8	2		1				4	
		4	6		2	9		
	5				3		2	8
		9	3				7	4
	4			5			3	6
7		3		1	8			

# Farewell from outgoing Chair

By Gill Williams

Dear all,

I have just completed my three years as chair of the Parish Council. It was really enjoyable but I wish that COVID had not meant that nearly half of it had to be conducted via ZOOM!!!

We have kept abreast of planning applications, we completed a full village survey to try to identify how the village as a whole wishes to progress, we have managed to reduce the speed limit on the A370, we managed to stop the flood of houses on entering our village being built.

We also now have a full nine members complement of enthusiastic councillors trying to deal

with all the day to day problems cropping up in our village.

Kirsten Hemingway is our new chair and I know the council will be in safe hands under her rule and I wish her the best of everything. In my new role as Vice Chair I will support her and the BPC to the best of my ability and as always we have the specialised support of Bruce Poole as our very experienced clerk. Special thanks to Cllr Mary Sheppard for all her work over many years as vice chair, we are fortunate that we can still retain her detailed knowledge of the village and its history.

Thank you to all of you as a village for all your support and most recently for your participation in the Jubilee celebrations. More of that elsewhere in this edition.

Name	Email
Gill Williams	Gillwilliams @bleadonparishcouncil.co.uk
Mary Sheppard	Marysheppard @bleadonparishcouncil.co.uk
Huw Boyce	Huwboyce @bleadonparishcouncil.co.uk
I D Clarke	Idclarke @bleadonparishcouncil.co.uk
Rob Tyson	Robtyson @bleadonparishcouncil.co.uk
Ann Davies	Anndavies @bleadonparishcouncil.co.uk
Kirsten	Kirstenhemingway @bleadonparishcouncil.co.uk
Sara Garrett	Saragarrett @bleadonparishcouncil.co.uk
Graham Getty	Grahamgetty @bleadonparishcouncil.co.uk

## Letter to the editor

Following a letter I placed in the last issue of the Bleadon Village News, I would like to apologise for the hurt it caused any individuals.

Huw Boyce



# Invitation

All new Bleadon parish residents since 2020...

**To:** 'Contact us' social get together

**At:** Bleadon Coronation Hall

**On:** Thursday 29 September at 7pm

*Come along and meet other residents, parish councillors, representatives of the various clubs and discover what activities are on offer.*

*Also learn details about local services and more.*

*Light refreshments will be provided.*

*We look forward to meeting you.*

## Bleadon Village

MONTHLY

## MARKET

## Saturday

18<sup>th</sup>

June

16<sup>th</sup>

July

20<sup>th</sup>

Aug

17<sup>th</sup>

Sept

Coronation Hall and Jubilee Hall

BS24 0PG

9.30am – 12 noon

30+ stalls with:


Fresh local produce. Old Spot Pork & Sausages.  
Goat Meat, Milk, Cheese, Lamb. Bakery. Eggs.  
Pies. Savouries. Preserves. Cakes. In season Veg. Plants.  
Books. Crafts. Jewellery. Collectables. Gifts. Toys.  
Bric-a-Brac.

Something new every month.  
Delicious locally sourced refreshments.

Find us on Facebook and [www.bleadon.org.uk/market](http://www.bleadon.org.uk/market)

Your recycling and waste collection day is

## WEDNESDAY

	 recycle <small>for Home-Compost</small>	 Recycling, food waste and rubbish	 Recycling and food waste	 Recycling, food waste and rubbish	 Recycling and food waste	 Recycling, food waste and rubbish	Recycling and food waste
Nov-21		3	10	17	24		
Dec-21		1	8	15	22	29	
Jan-22			5	12	19	26	
Feb-22			2	9	16	23	
Mar-22			2	9	16	23	30
Apr-22		6	13	20	27		
May-22		4	11	18	25		
Jun-22		1	8	15	22	29	
Jul-22			6	13	20	27	
Aug-22			3	10	17	24	31
Sep-22		7	14	21	28		
Oct-22		5	12	19	26		
Nov-22		2	9	16	23	30	

Put your containers out by 6.30am on collection day. Collections can take place until 5pm.

Rubbish is collected every other week.

You can report missed collections or order replacement containers at [www.n-somerset.gov.uk/connect](http://www.n-somerset.gov.uk/connect)

For general information about recycling and waste visit [www.n-somerset.gov.uk/recycling](http://www.n-somerset.gov.uk/recycling)

# Hundreds raised for hall's new kitchen

by Betty Paterson

**W**e have seen a lot of changes over the past two years of the pandemic which has changed all our lives dramatically.

In October 2020, we took the decision to open the hall up to the users again with suitable health and safety protocols in place. At first there was little demand, we lost a few users but gained a few more, so all in all I am pleased to report we are now back in full swing again. Everyone is pleased to be back and meeting with their friends.

Our most popular return was our Christmas market on 4 December 2021. Both halls, youth club and Church Room were well supported, as far as Covid restrictions would allow.

The raffle was a great success raising a whopping £400 profit. We now look forward to regular monthly markets, all profits going to hall improvements. Thank you to the team of volunteers who make sure this very popular event takes place each month.

In January 2022, we welcomed our new cleaner Abbe to our team and in February another new face, our Booking Officer Robin. Both ladies are doing very well and we are pleased to have them on board.

We also decided to adjust our hire fees to make them less complicated and life a bit easier for our Booking Officer. Our rates are now hourly, with cheaper rates for our Parish residents.

2022 has been a busy year for us as we catch up on all the repairs we could not accomplish during the pandemic. The Coronation Hall ceiling has had a coat of paint and new LED lights have been installed.

We have also installed a new sound system, screen and projector. We hope to paint the other internal walls around the hall soon. Our kitchen in the Coronation Hall, as you all know, is our next big project. We are getting quotes at the moment, and hopefully the kitchen will be refurbished within the next six months.

In March, we held a very successful Silent Auction. It was hard work, but worth every minute, raising £738 which will go towards our new kitchen. I would like to thank everyone who helped on the night. I could not have accomplished it on my own, and a special thank you to all those who contributed.

The past two years have been interesting and challenging for the committee and I would like to thank all of the volunteers who help to run the hall. Without their help and dedication we wouldn't have a hall to enjoy.

## WANTED

Since 2018, Bill Blacklock has very ably undertaken the role of Hall Supervisor, overseeing the day to day use of the Halls, arranging repairs and maintenance, and acting as the first point of contact for enquiries from users other than bookings queries.

Unfortunately, due to other commitments, he will be giving up the role at the end of June so we are looking for a replacement to start as soon as possible.

A basic requirement is the individual will need to have average fitness, common sense and will need to live locally to be able to respond quickly to problems. Some DIY skills would also be useful. No fixed hours are involved but the role only requires a few hours per week, depending on circumstances.

If you are at all interested or you want a chat about the role, a job description is available on request from the Secretary, Kevin Barrett on 07855 225049 or [kevinbarrett240@btinternet.com](mailto:kevinbarrett240@btinternet.com)



# Floral displays take home ribbons

by Rose Benjamin and Libby Boucher

On Saturday 5 March, Bleadon Horticultural Society hosted its 47th annual Spring Show at the Coronation Hall. After a two-year pandemic hiatus, 160 entries were received and, despite recent storms, competitors managed to protect their cut flowers and bulb culture.

Silverware was won by Peter Glover, Rose Benjamin and David Shepard for putting on a lovely display of spring colour and scent added to by intricate miniatures and royal-themed floral exhibits. An encouraging number of visitors attended who enjoyed a wide selection of beautifully made homemade cakes from the refreshments counter.

Further homecraft was on display with Libby Lockyer winning the BHS Cup and Antoinette Welch gaining most points overall.

Robin Flavell took home the prize for best biscuits and Edward Bayntun received the silverware for the best Victoria sponge.

Also on display was a beautiful and diverse selection of handicrafts and photography where Sara Hughes and Sarah Ireland were rewarded for their entries.

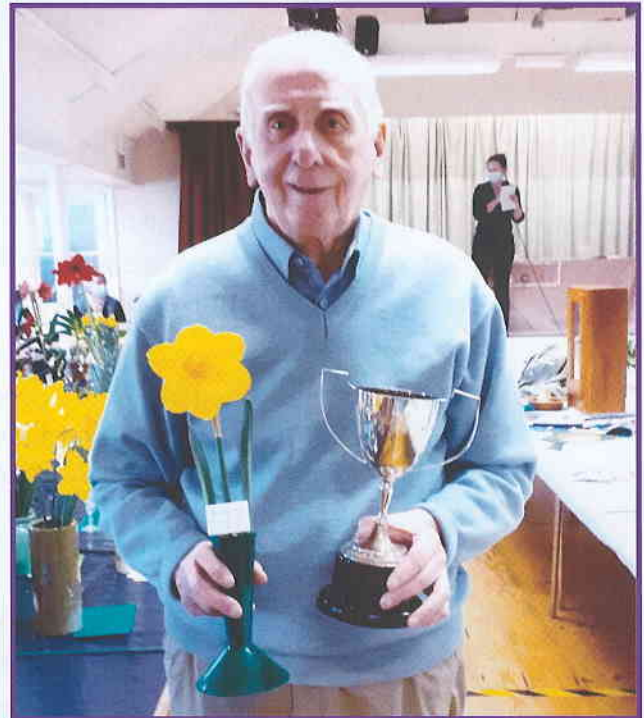
The juniors put on a great show of jubilee designs for flags and bunting, with Rosie receiving the cup for most points (aged 6-11yrs).

Thank you to everyone who supported the village show, it was good to be back! We look forward to the summer show to be held on Saturday 3 September. Show schedules detailing classes will be available from 3 August at Bleadon Post Office and Farm Shop and the church porch.

## Future meeting dates:

- *Tuesday 18 October* – On the wildside of Dartmoor: the gardens of Buckland Monachorum and Wildside – Hilary Little
- *Tuesday 15 November* – Creating a Christmas table decoration – Libby Boucher

**All are welcome.**



## Mark Howe

**Gardening Services**

**9 Malvern Road, Weston**

Regular grass cutting

Hedges and trees cut

Fences erected or repaired

**GET IN TOUCH TODAY!**

01934 413594

07773 272003

Turfing

Fence painting

Power washing



# WI raise hundreds for air ambulance

**B**leadon WI continues to thrive, with 100 members and a waiting list, a diverse number of events and activities continue to happen every month. This month, we are sad because two of our members have passed away. We remembered them at our meeting and books of condolence were written in by members. We are also proud this month because we have raised more than £900 for The Great Western Air Ambulance.

We enjoyed the Jubilee celebrations which were led by our choir, The Bleadon Belles, at a sing-along. Each decade of the Queen's reign was represented in music. At our main meeting we dressed in red, white and blue, baked Jubilee cakes for our competition and drank Prosecco (if we weren't driving).

Happy plans for our ball in September go ahead (**more information on page 24**).

We are holding a Table Top Sale in Bleadon on the 24 July. Tickets are still available for the Ball. Proceeds for both events go to Great Western Air Ambulance.

## The Bleadon Belles

**T**he Bleadon Belles have had a busy time in the run up to the Jubilee celebrations. They were sad that their lovely pianist Liz Rankin had to retire and want to thank her for all her loyal support through challenging times and three musical directors!

Now they are happy to welcome Kevin Joint as their regular accompanist. Kevin is very talented and well known locally and the choir are excited to be working with him.

It was wonderful to be singing with the WorleWind Band again in April. The much-postponed concert was the first big outing for the choir since lockdown with Musical Director Naomi Davies who joined us in 2019. Accompanied by Kevin Joint, we sang many songs learned during lockdown and loved singing with the Band in a grand finale.



The Platinum Sing Along was a great success. Naomi did a wonderful job as 'Master of Ceremonies' and everyone joined in with the seven decades of song with gusto. Now the Belles are rehearsing hard for their Summer Tea Party, from 3-5pm on Sunday 10 July in the Coronation Hall.

Tickets (£5-7) will be available from the Post Office and choir members. As well as the Belles there will be some surprise guests. Come along and join in the fun!

## THE BLEADON BELLES and friends



Invite you to join us for a

## Summer Tea Party

on Sunday 10<sup>th</sup> July

from 3 – 5pm

in the Coronation Hall, Bleadon

**Tickets £7 Adults - £5 Children**

**To include**

**Tea/coffee/squash**

**And Cake**

**Available from Bleadon Post  
Office and Choir Members**

**All profits to Great Western Air Ambulance**

# Cycle ride raises £11k for Mind

by Phil Bindon

**O**n the 11-12 June 2022, a group of six riders from Acorn Recruitment and Edenstone Homes cycled 206 miles from Holyhead to Cardiff Bay.

Cycling 100 miles in a day is a big undertaking in itself, but when that is being done on two consecutive days with a combined elevation of 17,000 feet, it was particularly tough.

The group—which includes Bleadon’s own Phil Bindon—has surpassed its £10,000 target by fundraising more than £11,000 for Acorn’s charity of the year for 2022, Mind.

Phil, who lives on Bleadon

Hill, may be well known by Bleadon News readers after he featured in the September 2021 issue after he and his team raised £10k for the RNLI.

Phil cycled 200 miles in memory of his 23-year-old son Mike, a passionate fisherman, who sadly died while out at sea off the coast of Cornwall in January 2014.

Now, Phil has joined his colleagues at Acorn Recruitment to support Mind by taking on yet another cycling feat.

The team said: “The reason we chose this charity is that it aligns with many of our values - it also won the vote as the charity Acorn employees would like to

support this year.

“One in four people experience mental health issues, and we want to raise money to help those suffering to get the support they need.”

It’s Acorn’s 30th birthday in 2022, and we intend to celebrate it throughout the year, but we want to start by giving back.

**There is still time to donate to the charity bike ride. This can be done by visiting [www.justgiving.com/fundraising/acornhousingcyclingchallenge](http://www.justgiving.com/fundraising/acornhousingcyclingchallenge)**

## Coastal Access

**A**ust to Brean Down: Commencement of public access rights between Sand Bay and Brean Down.

On 9 July 2020, the Secretary of State for Defra approved Natural England’s proposals to improve coastal access between the surfaced promenade on Beach Road, Sand Bay in North Somerset and Brean Down in Somerset as part of our overall proposals for the stretch of coast between Aust in South Gloucestershire and Brean Down. (See attached map)

Following this approval, North Somerset Council has nearly completed the necessary works on the ground to make the route accessible to the public. In doing so it has worked closely and in partnership with owners and occupiers.

I am writing to inform you that the necessary Order to commence the rights of access under section 2(1) of the Countryside and Rights of Way Act 2000 will be passed with effect that the rights will come into force along the route and adjoining spreading room on 16 June 2022.

**From 16 June, the public will therefore have a legal right to walk the approved route and accessible parts of the coastal margin.**

## North Somerset Consultation

**N**orth Somerset Council is updating the existing Travel Plans SPD and would like your views on the proposed changes.

The purpose of the SPD is to guide and inform developers and occupiers of new developments and assist them in meeting their Travel Plan obligations. The updated SPD proposes a number of changes including those set out below, to enable the council and developers to better manage Travel Plans and Travel Plan Statements and ensure a consistent approach across North Somerset, in line with other local authorities.

- The revision of thresholds at which a Travel Plan Statement or Travel Plan is required for each type of development site.
- The introduction of two options for delivering Travel Plans – a council-led or developer-led approach.
- The revision of minimum requirements for Travel Plan measures and monitoring.
- The use of ‘Modeshift STARS’, an online platform where a Travel Plan can be stored, developed, managed and monitored over time.

We invite you to share your views on the proposed changes by responding to our short questionnaire. You can access the updated SPD and questionnaire [here](#). The consultation will close on **Monday 1 August at 12pm**.





# Now Open at ESCAPE

HAIR AND BEAUTY

Bridge Road, Bleadon ☎ 01934 813400 or 07494 784032

## Massage | Nails | Waxing | Facials

TO BOOK call or message on facebook or instagram

 BigKarmatherapies  bigkarmatherapies

From deep tissue to ultimate relaxation. Using specialist techniques to tackle problem areas directly improving posture and wellbeing. Each treatment is tailored to your needs on the day and can be upgraded with CBD oil.

**20% OFF**  
Treatments in July\*



\*Excluding manicures, pedicures and waxing



Hi I'm Krysh, and I'm the therapist at Big Karma. I have been a massage therapist for 10 years and whilst travelling the world I have been fortunate enough to develop my skills, learning from and treating clients from all different sporting and working backgrounds. Currently studying nutrition and naturopathy, I have a real passion for helping people feel their absolute best and something I have grown to understand over the years is that therapy can take many different forms. For me, it's in nature, natural living, my family, friends and keeping my body active.

The wonderful thing about Big Karma is that the therapy is whatever you need it to be. Whether that's a really good massage which will allow you to physically and mentally feel better and walk taller, or the connection of conversation during a manicure or pedicure, maybe its a facial performed using only the best aromatherapy products improving both your skin and well being, or maybe its just that feeling of walking out with a great new set of nails that make you smile every time they catch your eye.

Come and visit me at Escape on Bridge Road to find your therapy.





# Use the Bleadon bus!

by Les Masters

The new bus service, number 50, is in my opinion the best we have had for many years. It is more frequent, starts earlier, finishes later and reaches more places—and actually has a timetable at the stop. Now it is up to residents to use it, not just tell others to do so.

The new route is rather confusing at first, so a little clarification is in order. Buses leaving Bridge Road at fifty-six minutes past the hour are signed West Wick and heading for town.

Those leaving at twenty-eight minutes past are signed Hutton, which is the turning point. From Hutton back towards town they loop round Bleadon, meaning that two buses an hour pass through Bleadon but with different destinations. From Tesco back to Bleadon buses leave at four minutes past the hour.

Our most likely journey is to the town centre, next to Tesco. This gives access to specialist town

centre shops and the library. From there, however, the bus continues along the sea front towards Birnbeck, creating possibilities of a walk by the sea and/or a meal and a drink at The Cabot or The Captain's Cabin.

It continues via the old Town Quarry and Milton to the Sainsbury precinct, containing a large branch of Clarke's Shoes. On its return, it naturally calls at the hospital, then goes past The Ship, The Dolphin and The Wharf Cafe before turning into Thornbury Road. Passengers can therefore combine a seaside dog walk with refreshment. Catch the bus to Hutton and lunch at the Old Inn is available.

If this reads like a sales pitch, it is. I very much want this route to be continued, not just for me but for residents who do not have a car and for environmental reasons. Numbers are better than on the old route but there is scope for far more so I hope to see other Bleadonians take advantage of the new opportunities.

View the rest of the table at <http://journeyplanner.travelwest.info/routes/region/3>



50

Worle - WSM Centre - Hutton

Stagecoach West

Timetable valid from 24/04/2022 until further notice.

Direction of stops: where shown (eg: W-bound) this is the compass direction towards which the bus is pointing when it stops

	Mondays to Fridays											Saturdays						
<b>Bleadon, Bridge Road (E-bound)</b>	0728	0828	0928	1028	1128	1228	1328	1428	1528	1628	1728	1828	1928	0728	0828	0928	1028	1128
§ Bleadon, The Queens (N-bound)	0729	0828	0928	1028	1128	1228	1328	1428	1528	1628	1728	1828	1928	0729	0828	0928	1028	1128
§ Bleadon, Clovercat (N-bound)	0729	0828	0928	1028	1128	1228	1328	1428	1528	1628	1728	1828	1928	0729	0828	0928	1028	1128
§ Bleadon, Roman Road (NW-bound)	0730	0828	0930	1030	1130	1230	1330	1430	1530	1630	1730	1830	1930	0730	0828	0930	1030	1130
§ Bleadon Hill, Totterdown Lane (W-bound)	0732	0828	0932	1032	1132	1232	1332	1432	1532	1632	1732	1832	1932	0732	0828	0932	1032	1132
§ Bleadon Hill, Purn Lane (W-bound)	0732	0828	0932	1032	1132	1232	1332	1432	1532	1632	1732	1832	1932	0732	0828	0932	1032	1132
§ Bleadon Hill, Burnham Close (N-bound)	0732	0828	0933	1033	1133	1233	1333	1433	1533	1633	1733	1833	1933	0732	0828	0933	1033	1133
§ Bleadon Hill, Brockley Crescent (E-bound)	0733	0828	0933	1033	1133	1233	1333	1433	1533	1633	1733	1833	1933	0733	0828	0933	1033	1133
§ Bleadon Hill, Maldstone Grove (NE-bound)	0734	0828	0939	1039	1139	1239	1339	1439	1539	1639	1739	1839	1939	0734	0828	0939	1039	1139
§ Oldmixon, Broadway Lodge (NE-bound)	0734	0828	0934	1034	1134	1234	1334	1434	1534	1634	1734	1834	1934	0734	0828	0934	1034	1134
§ Oldmixon, Hillside (E-bound)	0734	0828	0934	1034	1134	1234	1334	1434	1534	1634	1734	1834	1934	0734	0828	0934	1034	1134
§ Oldmixon, Winstoke Road (E-bound)	0734	0828	0935	1035	1135	1235	1335	1435	1535	1635	1735	1835	1935	0734	0828	0935	1035	1135
§ Hutton, Oldmixon Road (E-bound)	0736	0828	0936	1036	1136	1236	1336	1436	1536	1636	1736	1836	1936	0736	0828	0936	1036	1136
§ Hutton, Warren Close (E-bound)	0737	0828	0937	1037	1137	1237	1337	1437	1537	1637	1737	1837	1937	0737	0828	0937	1037	1137



50

Hutton - WSM Centre - Worle

Stagecoach West

Timetable valid from 24/04/2022 until further notice.

Direction of stops: where shown (eg: W-bound) this is the compass direction towards which the bus is pointing when it stops

	Mondays to Fridays											Saturdays						
<b>Hutton, Holm Road (S-bound)</b>	—	0745	0845	0945	1045	1145	1245	1345	1445	1545	1645	1745	1845	—	0745	0845	0945	1045
§ Hutton, Warren Close (W-bound)	—	0746	0846	0946	1046	1146	1246	1346	1446	1546	1646	1746	1846	—	0746	0846	0946	1046
§ Hutton, Oldmixon Road (W-bound)	—	0747	0847	0947	1047	1147	1247	1347	1447	1547	1647	1747	1847	—	0747	0847	0947	1047
§ Oldmixon, Hillside (W-bound)	—	0749	0849	0949	1049	1149	1249	1349	1449	1549	1649	1749	1849	—	0749	0849	0949	1049
§ Bleadon Hill, Brockley Crescent (W-bound)	—	0750	0850	0950	1050	1150	1250	1350	1450	1550	1650	1750	1850	—	0750	0850	0950	1050
§ Bleadon Hill, Burnham Close (S-bound)	—	0751	0851	0951	1051	1151	1251	1351	1451	1551	1651	1751	1851	—	0751	0851	0951	1051
§ Bleadon Hill, Burnham Drive (NW-bound)	—	0751	0851	0951	1051	1151	1251	1351	1451	1551	1651	1751	1851	—	0751	0851	0951	1051
§ Uphill, Bleadon Hill (S-bound)	—	0752	0852	0952	1052	1152	1252	1352	1452	1552	1652	1752	1852	—	0752	0852	0952	1052
§ Bleadon, Anchor Inn (SE-bound)	—	0754	0854	0954	1054	1154	1254	1354	1454	1554	1654	1754	1854	—	0754	0854	0954	1054
§ Bleadon, Purn Way (NE-bound)	—	0755	0855	0955	1055	1155	1255	1355	1455	1555	1655	1755	1855	—	0755	0855	0955	1055
<b>Bleadon, Bridge Road (E-bound)</b>	—	0756	0856	0956	1056	1156	1256	1356	1456	1556	1656	1756	1856	—	0756	0856	0956	1056
§ Bleadon, The Queens (N-bound)	—	0757	0857	0957	1057	1157	1257	1357	1457	1557	1657	1757	1857	—	0757	0857	0957	1057
§ Bleadon, Clovercat (N-bound)	—	0757	0857	0957	1057	1157	1257	1357	1457	1557	1657	1757	1857	—	0757	0857	0957	1057
§ Bleadon, Roman Road (NW-bound)	—	0758	0858	0958	1058	1158	1258	1358	1458	1558	1658	1758	1858	—	0758	0858	0958	1058
§ Bleadon Hill, Hillcote (W-bound)	—	0759	0859	0959	1059	1159	1259	1359	1459	1559	1659	1759	1859	—	0759	0859	0959	1059
§ Bleadon Hill, Totterdown Lane (W-bound)	—	0800	0900	1000	1100	1200	1300	1400	1500	1600	1700	1800	1900	—	0800	0900	1000	1100
§ Bleadon Hill, Purn Lane (W-bound)	—	0800	0900	1000	1100	1200	1300	1400	1500	1600	1700	1800	1900	—	0800	0900	1000	1100





# Bleadon celebrates Queen Elizabeth II



by Gill Williams  
*Jubilee Committee Chairman*



**B**leadon Parish Council Platinum Jubilee Committee has been in operation since October 2021, so there was great excitement on Saturday 28 May this year when, finally, a group of villagers began to decorate the village with hundreds of metres of homemade bunting.

## Sunday 29 May



From the church down to the car park and along Bleadon Road fluttering red, white and blue triangles proclaimed the

celebrations were about to begin and sure enough on Sunday 29 May, the first event, the Civic Church service was held.

It was great to see the church so full, to hear representatives of various village groups reading the lessons and the prayers, the Brownie group charming everyone with their action song and to hear the rousing singing of 'I vow to thee my country' and two verses of the National Anthem helped us all to get the feeling of what we were celebrating. Members of the congregation were invited to come forward to build a crown of Sweet William flowers which remained at the chancel steps throughout the week of celebrations.

## Monday 30 May

Villagers arrived at the church to set up their floral arrangements for the week long Flower Festival.

The walls of the nave were lined with beautiful flowers, mainly red, white and blue of course, depicting each arranger's concept of Jubilee.

The village WI provided a judge and she awarded Erin Jones the prize for the children's group, and Otty won the adult prize. Congratulations to both.



## Tuesday 31 May

Tuesday provided an opportunity for the Bleadon Belles choir to lead the celebrations with a wonderful evening of music in the Coronation Hall. Conductor Naomi Davies led the rehearsal warm up for the 120 villagers present with tongue twisting exercises for clarity in enunciation, and vocal exercises for tuning the voice.

What followed was a great evening of singing, all the songs coming from the 70 years of the Queen's reign sung with real gusto culminating with a wonderful performance of ABBA's Thank You For The Music. Singing is a great activity for wellbeing and we certainly left the hall that even-

ing with a real 'wellbeing' feeling.







## Wednesday 1 June

Wednesday provided a break in celebration activities but we are going to meet again at the end of October for the village children to plant their named trees for the Queen's Green Canopy.



## Thursday 2 June

On Thursday, we joined the national celebrations with the lighting of our Jubilee Beacon on Roman Road. It was a perfect summer evening, warm, no wind and of course with one of the most fantastic views in the country. It was really exciting to see villagers in family groups walking up Hellenge Hill and Roman Road many with their dogs to enjoy this national event.

We had decided the beacon should be lit by a young villager, looking forward from this 70-year reign and so, 10-year-old Rosie was chosen to undertake the task. She arrived with her parents in an

open-topped car and, as she alighted, she was welcomed with the official Jubilee trumpet fanfare.

She mounted the bench so she could read the official proclamation from a 'gold and jewelled book'. She did this beautifully and then came the moment, at exactly 9.45pm, to take the four-foot-long match and light the beacon.

It lit immediately and the flames illuminated the metal crown and the E II R emblem. All the adults and children present were then given sparklers to join in the celebrations and to observe other local beacons now visible from our wonderful vantage point. A really memorable evening.







1952. We began the story in the church at her christening with a real baby being christened in the ancient font and on cue crying as the water was poured on his head. Yes it was a baby boy playing the part!

### Friday 3 June

We had another memorable and unusual event on Friday afternoon. As part of the Jubilee celebrations members of the Bleadon Players, led by Charlotte House, performed a 'travelling play'.

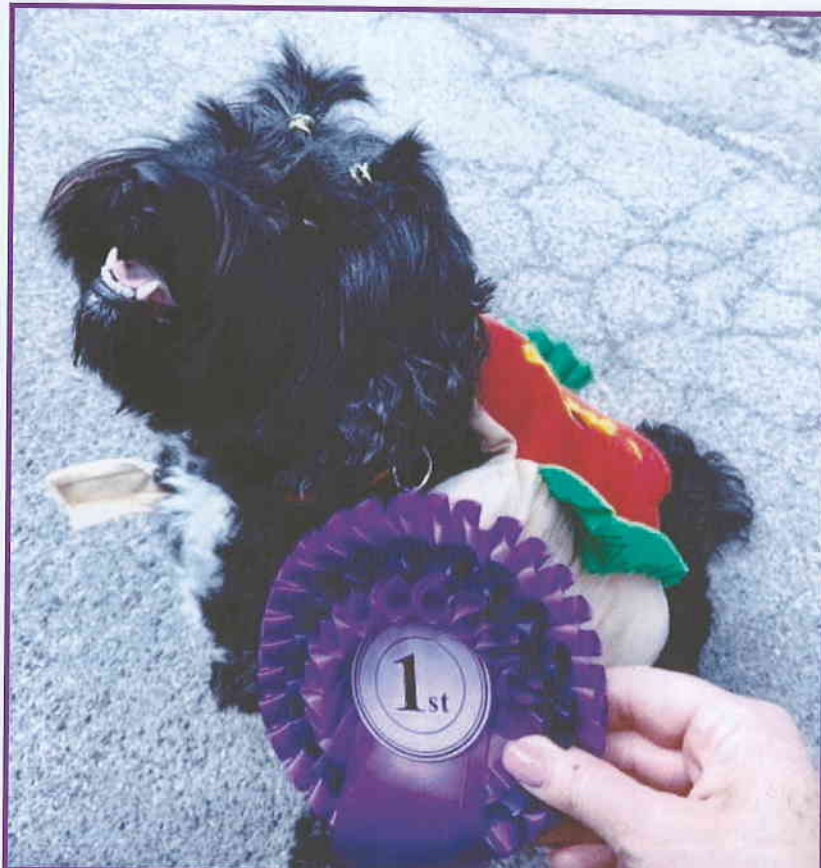
This was the story of Susan a baby born in Bleadon in the year of the Queen's Accession in

The audience then moved to the Church Room to experience Susan's teenage years with 'attitude', to the Youth Club for her wedding reception, to the playground with her grandchild for chats with other mothers and finally we ended in the Coronation Hall at her 70th birthday party when we found out that 'Susan' was the name of the Queen's first corgi—a really fun event!

### Saturday 4 June

Saturday provided us with another very different day. This time it was the Queen's Arms turn to provide the venue. The car park at 1.30pm suddenly turned into Crufts, when more than 50 dogs brought their families to enjoy a typical village dog show. The Best Smile, The Waggiest Tail, The Best Trick, The Most Look-a-like Dog and Owner were some of the fun classes and every dog went home with a rosette.

The last time we had a village dog show, my little Berry went home with a Best In Show rosette. This time he could only manage one third place. Age is very unkind, even for dogs! The barbecue continued into the evening was enjoyed by everyone. Another great day and a real village event.







## Sunday 5 June

The climax of the national celebrations was Sunday's The Big Lunch. It began rather disappointingly, with all the outdoor arrangements so long in the making, having to be cancelled because of the weather forecast, but with everybody turning to the job in hand, we were able to get all 224 villagers into the two village halls together with all their hampers, fabulous food and drink and decorations.

Judging by the buzz of conversation and laughter everyone forgot the crowding and in typical British manner got on with the enjoyment.

We were entertained by Eclectic Voices singing a specially written Jubilee Anthem and then all present were served with the national competition

winner's Jubilee Pudding, an orange and lemon-based trifle with amaretti biscuits and white chocolate shards.







# Jubilee cheer at Bleadon Farm Shop

by Alistair and Charlotte

**W**e celebrated the Platinum Jubilee in style at the Farm Shop. Bunting, balloons, patriotic planters, souvenirs and of course, our special lunches for the week...the Platinum Platter!

More than 50 people enjoyed our cake stands, which were positively bulging with sandwiches, Coronation chicken vol-au-vents, quiche fingers, scones and cakes. The request has been made loudly and clearly to repeat, so do look out for our Wimbledon version...**coming soon!**

Cornish fish is now firmly back on the menu, freshly caught and prepared for absolute freshness. Order by Monday morning for delivery on Thursday! The café is buzzing with our ever-increasing range of lunches and cakes. New kids on the block are our homemade sausage rolls and scotch eggs.

Our Sunday menu includes bagel with cream cheese, smoked salmon and avocado and also waffle with yoghurt, fruit and honey. We have extended the range of gluten free, dairy free, vegetarian and vegan meals. Cooks Bev, Steph and Jess are happy to adapt your meal to suit, so just ask!

Our 'top room' is now booked for several groups, both regular and occasional, so do consider us as an option for a small bespoke 'do'. Your booking can include food, drinks and service or just the room...it's our pleasure to make your event personal. Similarly, we are able to cater for outside events with finger food on platters or hot dishes ready to heat and serve. Call Bev on 01934 815584 to discuss your requirements.

The Post Office is open from 9am-5.30 pm on weekdays and 9am-1pm on Saturdays. Joining Post Office clerks Manshu, Rachael, Tracey, Amanda, Peter, and newcomer Anne. Joining shop staff Kelly, Nikki, Helen, Mir, Lorna and Amy is Olivia...although you will have seen Olivia in the café...we're nothing if not versatile in Bleadon Farm Shop!

Service with a smile in the deli comes courtesy



of Annie, Cici, Helen, Maxine, Katie, Olivia, and there are now two Mollies! We will be opening the café until 4pm (Mon-Sat) during the school summer holidays, serving milk shakes, ice-cream sundaes, cream teas and more delicious summer options - why not bring the family along for an afternoon treat?!



## CONTACT ELLIE

Do you want to enquire about advertising? Maybe you have an article you would like to be considered for inclusion?

You can contact me at [bleadonnewseditor@gmail.com](mailto:bleadonnewseditor@gmail.com)

**I may not answer straight away due to other commitments but I will get back to you!**





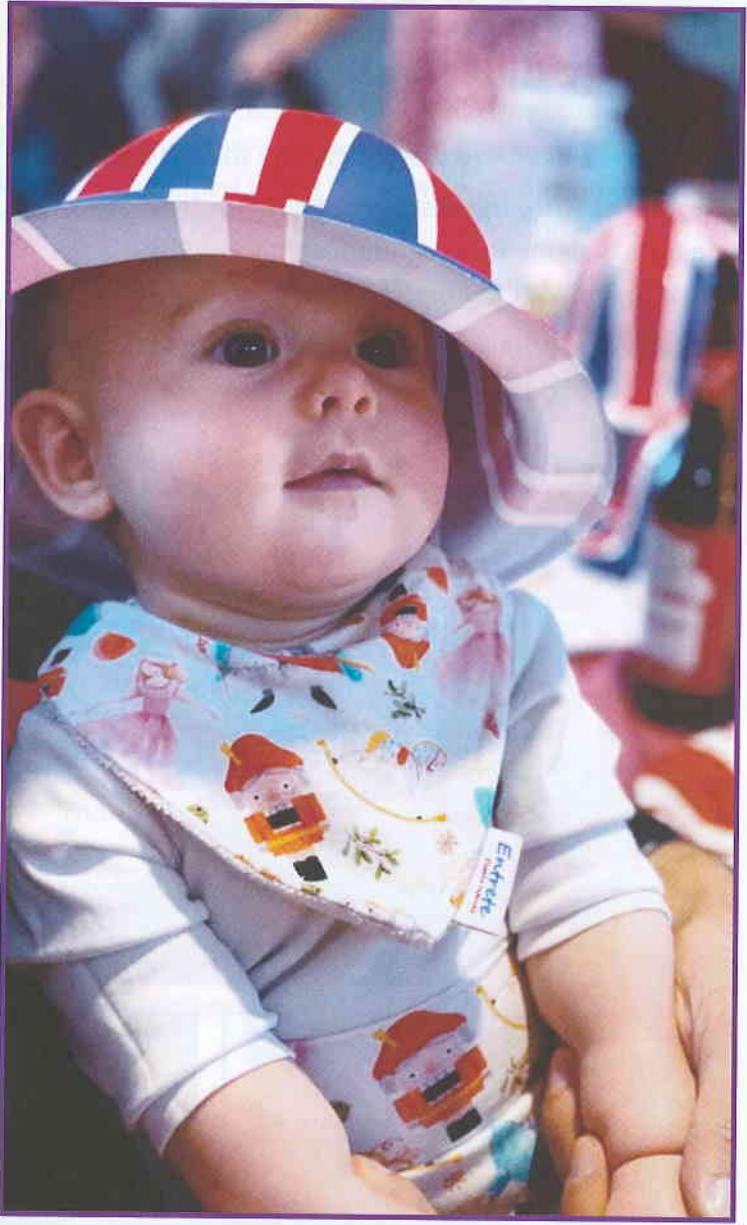
# 'Thank you Ma'am' - village marks Queen E







# Elizabeth II's Jubilee







# A paw-fect Jubilee dog show



By Ellie Young

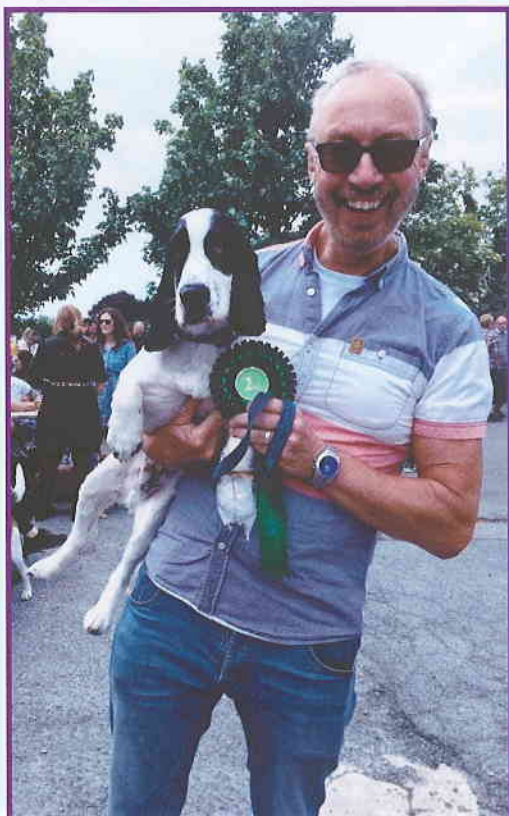
Tails were wagging at the Jubilee Dog show! The furry friends were judged for their appearance, demeanour and much more before the 'Best In Show' ribbons were handed out.

Dogs both big and small were paraded around the courtyard of the Queen's Arms.

It cost £2 to enter a dog into the overall show and all funds raised were donated to the local charity Dogs Friends, which raises money towards rehoming dogs of all ages and sizes. The event raised £200 with more than 50 dogs taking part.

Thank you to Rachel Leaman, Phil Heycock, Tracy Heppenstall and Lynda Stinchcombe for submitting photos of these four-pawed superstars to include in the magazine.

If anyone is interested in fostering or adopting a dog, or supporting the charity, please visit <http://dogsfriends.me.uk>







# Paws, performances and pints at Queen's Arms



by Kerrie and Alan

**W**e have been at the Queens Arms for three years now and it has been a rollercoaster journey with Covid-19 forcing us to close and having to implement all the various restrictions.

Now things are getting better and with the sunnier days coming, people are feeling a bit more confident about coming out and socialising again. We have just acquired a few more outside tables and chairs from Butcombe so there is plenty more seating outside. It really is lovely to see everyone enjoying a drink and sitting in the sunshine.

We have also been making the most of the back courtyard and recently the Steepholmers Sea Shanty Singers came and performed for us with some rousing sea shanty music. It was a brilliant night and just over £185 was raised for the Weston RNLI.

The acoustics in the courtyard made it a great experience. We are hoping to have them back again later in the year.

The hanging baskets and tubs are now coming into bloom and look lovely, there is a Jubilee theme to them, and we are grateful to Westhaven School for growing the baskets and Ruth for planting the tubs, they really do make the pub look pretty and welcoming.

Our Open Mic evenings continue to be a success and, now the weather is warmer, we can go back to having them outside. Thank you again to Mike, Charlie, Pete, Loz and all our regular performers, especially Les who never fails to get the audience involved.

Our Jubilee event on 4 June was a huge success. We were lucky the sun shone, and the dog show was amazing. We have never seen so many dogs in the pub, they all looked lovely and were so well behaved, they were a credit to their owners and really enjoyed themselves.

The barbeque sold out and the music that followed was awesome as always. The

car park was closed and provided loads of space for everyone. Thank to everyone who supported the event, helped to get everything ready, judged the dog show, performed incredible music, and helped with the barbeque.

An amazing £200 was raised for the Dogs Friends Charity. It really is appreciated and just goes to prove that the Queens really is a great community pub.

The next big event is the Green Eye Motorcycles Show on 30 July. There will be a barbeque, music, and some lovely motorcycles to admire. More details will be available nearer the time.

We also can't wait for 13 August which Start of Time will be performing at the pub and promises to be another great night.

**Thank you once again for all your support – we look forward to seeing you soon.**







# Bleadon in Bloom paint village red, white and

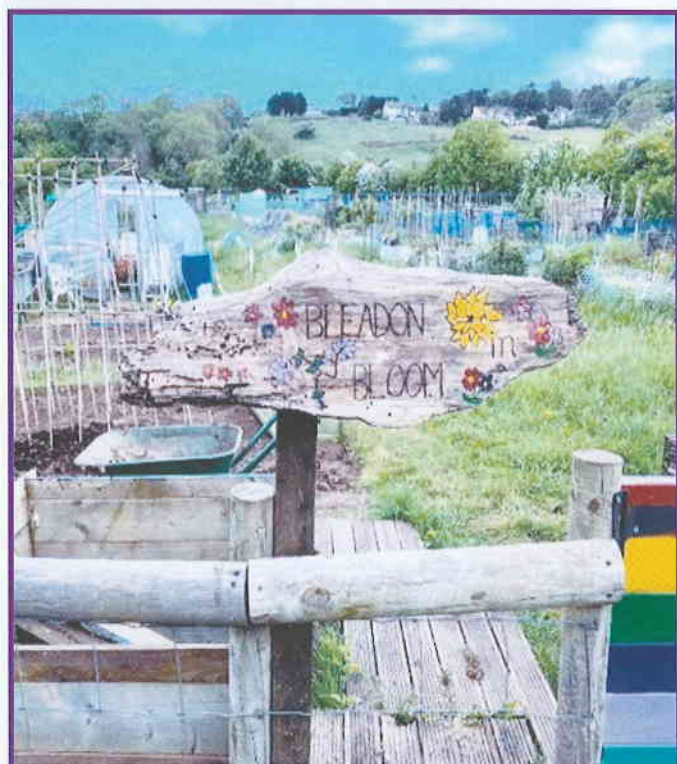


by Robin Flavell

**B**leadon is a vision of red, white and blue, purple and gold. Well done to all our Bloomers who helped with pricking out seedlings, watering, weeding, strimming, carrying compost, moving tubs, planting out everything in time for the Jubilee celebrations. The work continues to keep the pots looking fantastic throughout the summer, our watering volunteers are all playing their part in this village team effort.

### Polytunnel and allotment

It's been a busy spring building our polytunnel at the allotments. The work was done in time to grow many of our own plants for this year's displays. We've used recycled materials wherever we can: pasting tables and wardrobe doors, old washing up bowls & milk bottles, left over paint, driftwood & old pallets,



and barrels from a car wash made into water butts.

We have been working hard to establish the rest of the allotment, it is becoming a community space to



meet up and share plants, gardening tips and growing space. If anyone is interested in taking on a small plot, you are welcome to come down to see what we've been up to. We meet most Tuesday mornings from 10:00am at the allotment.

### Queen's Green Canopy

Would you like your child to plant a tree for the Queens Green Canopy?

Bleadon Parish Council are offering a free tree to every child in the village to create a lasting reminder of Queen Elizabeth's Platinum Jubilee for generations to come. The tree will be identified with the name of the child who planted it.

It's not too late to get involved. Please send your children's names to Gill Williams [gwilliams28@gmail.com](mailto:gwilliams28@gmail.com) to add them to our list. The trees will be planted in the autumn.

If you want to get involved with **Bleadon in Bloom** - contact Kirsten Hemingway ([writer@kirstenhemingway.co.uk](mailto:writer@kirstenhemingway.co.uk)) or Robin Flavell ([robinflavell@yahoo.com](mailto:robinflavell@yahoo.com))





## How did the rest of England celebrate?



By Ellie Young

**M**uch like Bleadon, the rest of the UK and the wider commonwealth enjoyed a four-day weekend and a plethora of Jubilee celebrations. From a nationwide beacon lighting to streets lined with people sitting down to cream teas.

The world could also tune in to the Trooping

of the Colours, a display from the Red Arrows and Battle of Britain Flight as well as the lighting of the tree before rounding up in the Jubilee concert and a parade of the decades.

It was certainly an occasion to remember and not something we are likely to witness again in our lifetime. Generations came together to rejoice the life of Queen Elizabeth II.







Join

# Eclectic Voices

In this Jubilee Year for a

## Musical Celebration

Musical Director: John W Johnson

Flute: Jolanta Modelska



Eclectic Voices

Saturday 9<sup>th</sup> July 2022 at 7.30pm

In St. Peter and St. Paul Church, Bleadon

Entry £5 on the door

Refreshments served afterwards

Proceeds towards the upkeep of our beautiful Church





# Volunteers vital for village

by Les Masters

**T**he word 'volunteer' first came to my notice in 1940, when I was five, it being the name of a rural Hertfordshire pub frequented by my father.

As WW2 went on I came to understand the military meaning of it, particularly as my father had been a volunteer in 1914. It was a good many years before I appreciated its meaning in civilian life.

When we arrived to run the shop in Bleadon (1987) we soon found that volunteering was a large part of the local make-up. Some of our customers were regular volunteers at the hospital shop and Citizens Advice, others were members of the parish council or the hall management committee.

The annual Mayday Fayre required an enormous number of helpers to set it all up, run the stalls and refreshments, then clear away. We soon discovered that the church depended on volunteers in order to function properly.

We also noticed little unofficial initiatives, somebody quietly maintaining the bench by a bus stop, planting bulbs in a roadside bank and so on.

A few years later, as the underfunded construction of the Jubilee Room reached its final stages, the clean-

ing up and painting was done by volunteers.

A few more years after that the monthly village markets began, needing then as now volunteers to put out the traffic cones, set out the tables and chairs, prepare and serve the refreshments, then put it all into reverse.

The money raised from these markets contributed enormously to the cost of the major alterations to the hall, fully funded this time. However, when the contractors had finished the accumulated dust that had inevitably filtered through to the kitchens had to be washed away, a mammoth task. There was no need to ask; the volunteers could not wait to get in and prepare for the re-opening.

More recently, Bleadon in Bloom has brought out another group of helpers, and Facebook reveals the excellent people who pick up enormous amounts of litter.

Finally, the Jubilee events have again shown the willingness of Bleadon people to muck in, get together and make their village a good place to live. Many of those involved are relative newcomers, and their speedy absorption into events suggests volunteering has a bright future in Bleadon.

## Welcome new Beat manager

**T**he monthly beat surgeries continue at The Post Office, in Purn Lane.

We will be holding a Tack Marking Event on Sunday 24 July from 10am – 4pm at Wick St Lawrence Village Hall, in Wick Road.

The event gives the public the opportunity to have leather saddles post code security stamped at the Wick St Lawrence Horse Show for free. We also have a new arrival to the team covering Bleadon. Our new Beat manager is PC 4743 Jason Way.

As always, if you have any issues you would like to discuss, please contact us on 101.



## Bleadon Sugarcraft Club

**B**leadon Sugarcraft Club is welcoming new members and visitors to its club.

The club meets on the fourth Thursday of the month at 7.15 for 7.30pm start. No meetings will be held in August or December.

All ages and abilities are invited, but children must be accompanied by an adult.

For more details, visit the group's Facebook page Bleadon Sugarcrafters.



# Market celebrates local produce

**B**leadon Village Market is not officially a farmers' market, but that doesn't stop us having some amazing local produce.

There is something for everyone but always popular is Mike's Pork with his prize-winning Gloucester Old Spots. Mike's produce, which includes sausages, pork cuts, pies, and sausage rolls is second to none and always delicious and of the highest quality. There is also Sally of Hills Bakers, a traditional local family baker selling different breads, cakes, and other delights.

Maria of Nut Tree Farm is a small-scale producer of goats' milk, cheese and homebred, naturally reared goat and lamb meat. Maria often has delicious goat cheese quiche and other treats for you to try. Gill has been supporting the Fairtrade movement for many years and is a regular trader with her Fairtrade products, gifts and

of course chocolate. Pat's New Beginnings 4 U charity stall, supporting and mentoring prisoners and ex-offenders has tasty home baked goods of all sorts as well as knitted crafts and plants for her good cause.

These are our regular produce stalls but we always welcome local producers and regularly have eggs, cheese, cakes, Scotch eggs, plants, in season veg, chocolate, gins and other produce for you to try. Of course, we also have our ever changing and creative crafters, book sellers, cards, artists, cosmetics, bric-a-brac, flowers.... add a cup of tea and a teacake or sausage & bacon bap (using stallholders' products) What's not to like?



## Wildlife charity look after ravens

by Pauline Kidner

**W**e rarely get ravens at Secret World but this year we have four juveniles. They are members of the corvid family but are much larger than their cousins. Ravens are incredibly intelligent and are on par with chimpanzees and dolphins. Capable of solving problems to acquire food, they also imprint easily and mimic sounds.

This is why, when the first one arrived, we got in touch with another wildlife centre to see if we could get another one for company. However, a further two have arrived from other areas so they are all together in an aviary at the moment.

A group of ravens is called an 'unkindness' probably as there are many superstitions about them. They are found mainly in the west and north of the British Isles.

It is ironic that we have the ravens just as the Jubilee celebrations are going on as the most famous ravens are found at the Tower of London. They have been kept there since the Reign of King Charles 2nd who was told that that "if the Tower of London ravens are lost or fly away, the Crown will fall and Britain with it."

There is a Ravenmaster who is responsible for the care of the ravens. This person is a Yeoman Warder or 'Beefeater'. The ravens have their wings clipped which is

cutting the edge feathers of one wing to make their flight uneven and therefore they cannot fly too far.

They are fed handsomely so I doubt they would want to leave anyway! At the moment there are seven ravens living at the Tower and they are called Jubilee, Harris, Gripp, Rocky, Erin, Poppy (the youngest hatched in 2018) and Merlina. The oldest raven was called Jim Crow and he lived until he was 44!

In flight the raven will have almost a 5 feet (180cms) wingspan and they soar so are easy to identify. They are larger than a buzzard. Eating mainly carrion, mammals, birds and eggs, insects and other invertebrates, their diet is very varied. It is said that they can mimic the sound of many birds and mammals – including humans. The fact that they eat carrion means that they have often been associated with death in folklore. As far as we are concerned, they are a really majestic bird and it's great to be able to eventually release these juveniles back into the wild. With all the Jubilee celebrations, we decided not to have open days over the Whitsun holiday but we will be open for the August Bank Holiday and look forward to meeting you then.

As usual, the number for advice or help is 01278 783250. People wishing to help us with collecting or rescuing animals can ask to be put on to our list for the next training sessions. You will be very valued!





## PBF WEALTH MANAGEMENT

We speak to our local Financial Adviser Katheryn Johnson who lives and works in the village of Bleadon about today's volatile times.

Read or watch the news, and you will encounter a world that's volatile, uncertain, complex and ambiguous. Glance at a stock market's performance over the course of a few weeks, and what stands out is probably not the general direction of travel, but the short-term seesawing of prices – especially during a volatile period.

Those characteristics can make the task of planning for you and your family's future feel all the more daunting.

As investors, it can be all too tempting to try to predict the future, or react to events as they happen. However, on the one hand, even long-term investors can all too easily respond emotionally to short-term volatility; and make bad decisions as a result. On the other, events are unpredictable at the best of times, and perhaps especially just now. On top of all this, it's not always easy to sort the facts from the fake news.

The wide range of current challenges make the world highly unpredictable. In the context of saving and investing, the products and services we need to help us are similarly numerous and complex. Do you take the DIY approach to investing, seek guidance, or look for professional financial advice?

Do you know your ISAs from your pensions and unit trusts – and how do you choose? Where should you invest? In public or private markets? In equities, bonds, or property? And should you seek out active managers or passive funds?

The weight, number and nuance of such questions can make us yearn for simpler times – and bury our heads in the sand. Yet that will not help you secure a brighter future for you and your family. In times like these, it's important to take action and speak with someone you trust.

A professional financial adviser can help guide you through the wealth of options available, to keep your eyes focused on the horizon, and to help you to achieve your long-term financial goals.

To receive a complimentary guide covering wealth management, retirement planning or Inheritance Tax planning, contact Katheryn at PBF Wealth Management on 0787 6687561 or email [katheryn.johnson@sjpp.co.uk](mailto:katheryn.johnson@sjpp.co.uk).

The value of an investment with St. James's Place will be directly linked to the performance of the funds you select and the value can therefore go down as well as up. You may get back less than you invested.

*The Partner Practice is an Appointed Representative of and represents only St. James's Place Wealth Management plc (which is authorised and regulated by the Financial Conduct Authority) for the purpose of advising solely on the group's wealth management products and services, more details of which are set out on the group's website [www.sjp.co.uk/products](http://www.sjp.co.uk/products). The 'St. James's Place Partnership' and the titles '@Partner' and 'Partner Practice' are marketing terms used to describe St. James's Place representatives. PBF Wealth Management Ltd is registered in England & Wales No. 8741245. Registered Office: Pure Offices 41, 137 Pastures Avenue, Weston Super Mare, BS22 7SB.*





*Saturday 24<sup>th</sup> September 2022*

*@ The Winter Gardens*

*630pm until late*

*Tickets £45, including 3 course meal and  
welcome drink.*

*Music from SIX MACHINE*

*For tickets contact*

*[bleadonball@gmail.com](mailto:bleadonball@gmail.com)*

*Find us on Facebook*

*Bleadon Ball*

THE  
*Bleadon  
Ball*

HOSTED BY BLEADON WI



*In aid of the Great Western  
Air Ambulance*





# Players announce next show

by Tim Clarke

**W**e are pleased to announce that our next play has been chosen. A sinister con man named Roat and two ex-convicts, Mike and Crocker, are about to meet their match.

They have traced the location of a mysterious doll, which they are interested in, to the Notting Hill Gate apartment of Sam Henderson and his blind wife, Susy. Sam had apparently been persuaded by a strange woman to transport the doll across the border.

However, when the woman is murdered, the situation becomes more urgent. The con man and his ex-convicts, through a cleverly constructed deception, convince Susy that the police have implicated Sam in the woman's murder and the doll, which she believes is the key to his innocence, is evidence.

She refuses to reveal its location and, with the help of a young neighbour, figures out she is the victim of a bizarre charade.

But when a deadly game of cat and mouse ensues, Susy knows the only way to play fair is by her rules, so when darkness falls she turns off all the lights, leaving her and the con men to maneuver in the dark until the game ends.

Wait Until Dark premiered in London at the Strand Theatre on the 27 July 1966, directed by An-



thony Sharp and starring Honor Blackman and Peter Sallis. The 1967 film adaptation, directed by Terence Young, starred Audrey Hepburn and Alan Arkin.

The Players run three shows throughout the year, in May, September and the January pantomime.

The Bleadon Players' will perform Wait Until Dark at the Coronation Hall, in Coronation Road, from 22-24 September.

Tickets, priced £10, can be purchased online at [www.ticketsource.co.uk/bleadon-players](http://www.ticketsource.co.uk/bleadon-players) or from the Bleadon Post Office.

A BLEADON PLAYERS THRILLER  
WITH KIND PERMISSION FROM CONCORD THEATRICALS

# WAIT UNTIL DARK

WRITTEN BY: **FREDERICK KNOTT**

BASED ON THE 1967 FILM FEATURING AUDREY HEPBURN

## 22ND TO 24TH SEPTEMBER 2022

CONCORD



# Mendip Hills AONB Young Rangers: now recruiting!

The Mendip Hills AONB Service are looking for 15 adventurous young people who love the outdoors and who want to be part of a special group of Young Rangers, aged 11-13.

They will get a taste for what it's like to look after the Mendip Hills, one of Britain's most special places, designated an Area of Outstanding Natural Beauty (AONB).

The Young Rangers will gain qualifications such as Outdoor First Aid, navigation and the John Muir Conservation Award, along with learning about the special qualities of the Mendip Hills, getting their hands dirty doing nature recovery tasks and having fun doing outdoor adventure activities.

Andy Chamberlain, Ranger Volunteer Coordinator for the AONB Service said: "The Young Ranger scheme is a unique opportunity for young people who love being outside on the Mendip Hills. They'll have lots of amazing new experiences on the Mendip Hills from finding adders to abseiling down cliffs.

"We're looking for young people who love being outdoors and can see themselves working in the countryside, they may already be living on a farm. We want to see applications from young people who already have a genuine interest in wildlife, conservation or outdoor adventure and can demonstrate this."

Matilda, a Young Ranger who has now graduated, said: "Young Rangers has not only given me practical skills such as dry-stone walling, navigation skills and first aid, but it has also given me social skills, helped to build my confidence and plenty of memories!"

Jane, a current Young Ranger said: "Being a young ranger has helped me to get to know the Mendip Hills better, and I've really enjoyed learning about what the rangers do. I have also met a group of amazing, like-minded people who I've become

great friends with. If you're an outdoor person, you'll love it!"

Young people can apply to join who are between 11-13 years. The programme lasts two years with 20 activities on the first Saturday of every month, apart from August and December.

The Mendip Hills AONB Partnership subsidises the scheme so that places are offered at only £125 per Young Ranger for the two-year programme. This covers all activities, equipment and the Young Ranger uniform.

To apply please visit the Young Rangers page on the Mendip Hills AONB website to download the application form. There are only 15 spaces available so be creative with your applications, send us artwork, images or even videos to show us how much you love the Mendip Hills!

We will be holding an open evening at Charterhouse Centre for you to find out more information on Friday 1 July, repeated online on Monday 4 July after which, the deadline for applications is Friday 8th July. The selection process will take place during the week of the 18th of July. The programme then starts in September.

For further information, visit [www.mendiphillsaonb.org.uk](http://www.mendiphillsaonb.org.uk), email [men-dip@mendiphillsaonb.org.uk](mailto:men-dip@mendiphillsaonb.org.uk) or call 01761 462338.

Fifty years ago, the Mendip Hills was designated an Area of Outstanding Natural Beauty (AONB). From its distinctive characteristics, tranquil plateaus and extraordinary views to the rich history, diverse wildlife, and abundance of outdoor and underground playgrounds, the Mendip Hills Area of Outstanding Natural Beauty is a treasured landscape to millions.

In 2022, through a series of events, activities, and special moments we are celebrating what makes our treasured land so precious. Go to [www.mendiphillsaonb.org.uk](http://www.mendiphillsaonb.org.uk) to find out more.



# Protecting grasslands with grants for landowners

by Megan Godley

**T**he Mendip Hills AONB has some of the most important stretches of species-rich grassland in the UK. In this parish, and in others along the southern edge of the Mendip Hills, the steep, sharply draining limestone soils, and the sunny position create the perfect conditions for wildflowers and pollinating insects to thrive.

Grasslands are an ancient habitat that formed after the last Ice Age, and were then sculpted and expanded by the activities of early humans like the Cheddar Man. As humans became more advanced and agricultural, shepherding and haymaking became more common in the Land of the Summer People, and are still a vital part of our landscape and cultural heritage. But many grasslands have been lost across the UK, primarily due to overgrazing or the addition of chemical fertilisers, which have pushed out the colourful wildflowers.

Farmers and landowners in this parish can help to strengthen the remaining grasslands on the Mendip Hills.

If there is already good grassland on your holding, keeping it that way with managed grazing regimes and native breeds that can still maintain bulk on rough ground, plus avoiding any chemical inputs is hugely valuable – protecting the biodiversity, protecting the carbon sequestration of the soils,

and protecting the beauty of the area.

If you would like to increase the species-richness of your holding, there are ways to reduce the rigour of dominant grasses to allow native wildflowers to thrive – this can include changes to grazing patterns and taking hay cuts, and may involve increasing the number of local wildflower seeds in the soil, for example through green-haying.

And you don't need to convert your entire field. Field margins and banks can provide essential corridors for species to move about in the landscape. Wildflower strips will increase the number of pollinators on your land, and also increase the number of predators like birds and beetles to control pest species, without losing too much productive land.

Wildflowers will often find a way, if given an opportunity and some time. Species rich grasslands require fewer financial investments than improved grasslands over time, there are few annual investments needed and the preservation and enhancement of our beautiful grasslands is a type of public good, for which the government is committed to paying farmers and landowners for under the upcoming environmental land management schemes.

Currently, the Farming in Protected Landscapes programme is open for applications, and would love to support projects that enhance and connect the species-rich grasslands of the Mendip Hills AONB in this parish.

If you are interested in finding out if this funding programme could help you deliver projects on your holding that will enhance the beauty of the Mendip Hills, help nature recovery, or mitigate against the impacts of climate change, speak to Megan on [megan@mendiphillsaonb.org.uk](mailto:megan@mendiphillsaonb.org.uk), call 01761 462338, or use the contact form on the Mendip Hills AONB website.

Case studies of local farmers who have already delivered projects through the Farming in Protected Landscapes programme are available on the website.





# Puzzle page answers

S	H	I	P	L	A	T	E			F		E
E		R		O		R		R	E	L	A	X
P	A	R	A	C	H	U	T	E		A		T
I		U		K		M		F		T	I	E
A	L	P	S		S	P	I	L	L	S		N
		T		B		S		E				T
B	I	S	T	R	O		S	C	R	A	P	S
L				A		T		T		E		
E		S	I	S	T	E	R		A	R	M	S
A	N	T		S		N		A		O		T
D		A		I	N	D	O	N	E	S	I	A
O	L	I	V	E		E		O		O		I
N		D			G	R	A	N	U	L	A	R

## Riddle answers

- 1) A hole
- 2) The dictionary
- 3) A secret
- 4) Your name



Professional Services for  
**PRINTING**  
**DESIGN**  
**GRAPHICS**  
**BOOK PRODUCTION**

Same day response for all quotes and enquiries.  
 Friendly, local and independent.



01934 635916

[www.taylorthorneprint.co.uk](http://www.taylorthorneprint.co.uk)

Unit 2, Glencoe Business Park, Warne Road, Weston-super-Mare, Somerset BS23 3TS

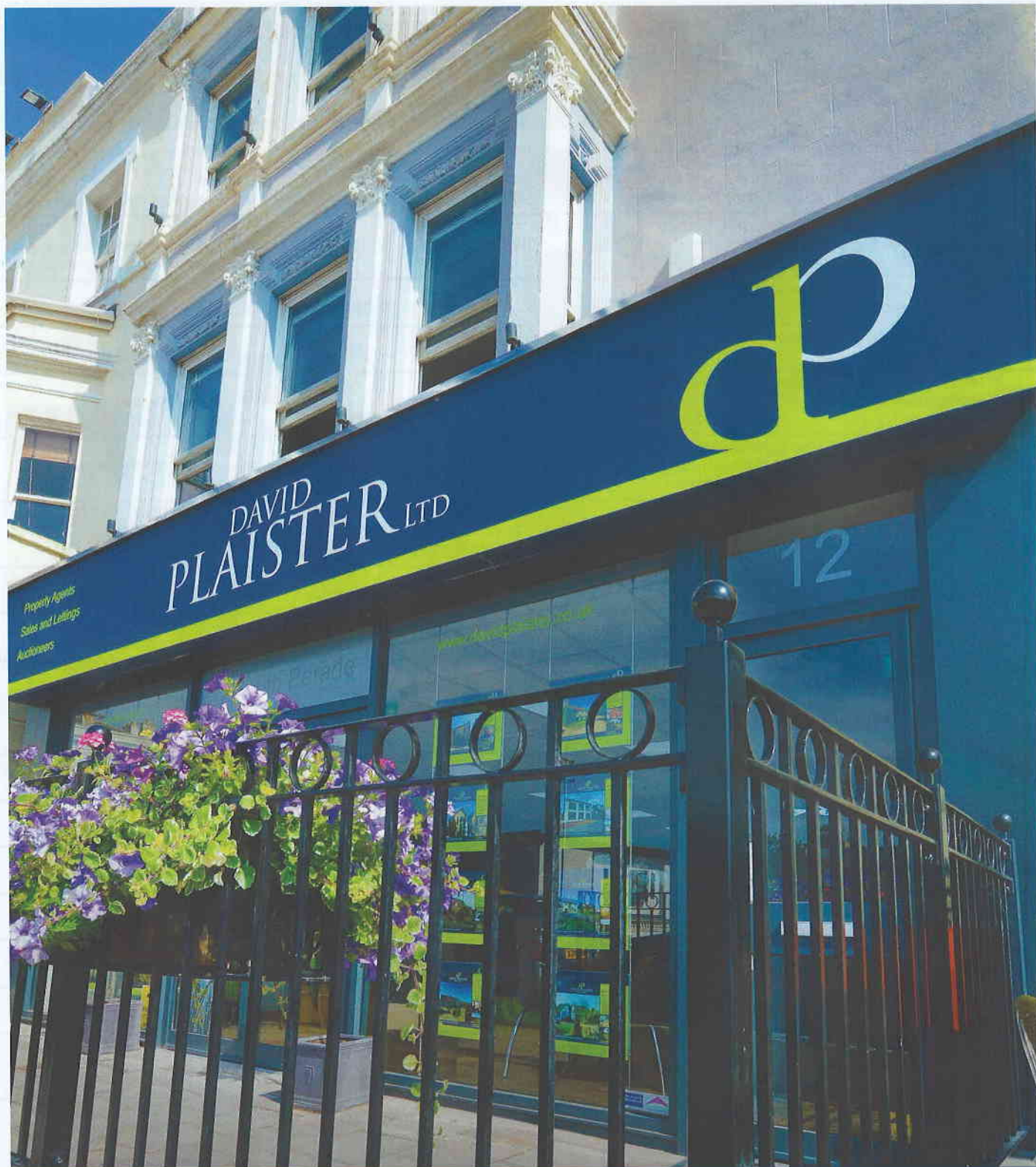
Many thanks to all contributors and advertisers for your ongoing support.

4	3	5	2	6	9	7	8	1
6	8	2	5	7	1	4	9	3
1	9	7	8	3	4	5	6	2
8	2	6	1	9	5	3	4	7
3	7	4	6	8	2	9	1	5
9	5	1	7	4	3	6	2	8
5	1	9	3	2	6	8	7	4
2	4	8	9	5	7	1	3	6
7	6	3	4	1	8	2	5	9



<b>Coronation &amp; Jubilee Halls Supervisor</b>	Bill Blacklock	01934 813031	07747 801753	
<b>Coronation &amp; Jubilee Halls Bookings</b>	Robin Flavell	01934 812218	07724 010715	bleadoncoronationhalls@gmail.com
<b>Youth Centre Bookings</b>	Keith Pyke	01934 813127		keith.pyke@btopenworld.com
<b>Monday 9.30-10.30am Jubilee Room</b>				
Yoga	Cheri		07717 290708	info@uniquebalance.co.uk
<b>Monday 1.15-4.30pm Coronation Hall</b>				
Bridge Club	Doug Norfolk	01934 812128	07547 163862	dougn@btinternet.com
<b>Monday 7-7.50pm &amp; 8-8.50pm Jubilee Room</b>				
Aerobics	Marie Keele	01934 270853	07939 038071	mariekeele@hotmail.co.uk
<b>2nd Monday 7.00pm Coronation Hall</b>				
Bleadon Parish Council	Kirsten Hemingway (Chair) Bruce Poole	01934 815540	07710 098804	kirstenhemingway@bleadonparishcouncil.co.uk parishclerk@bleadonparishcouncil.co.uk
<b>3rd Monday 7-10pm Coronation Hall</b>				
Holistic Therapy	Debbie Thorne		07905 537118	debbiethorne37@hotmail.com
<b>Tuesday 10.30-12.30 Coronation Hall</b>				
Art Class	Tina Dodd	01934 843660		sandtdodd@btinternet.com
<b>1st, 2nd, 4th &amp; 5th Tuesday Sept-May 7.30-9.30pm Coronation Hall</b>				
Photographic Group	Trevor Hartgroves Mark Frisby	01934 239011 01934 812573	07796 693032	t.hartgroves@sky.com marknfrisby@yahoo.com
<b>3rd Tuesday Oct-Jun 7- 9pm Coronation Hall + Spring &amp; Summer shows</b>				
Horticultural Society	Libby Boucher Rose Benjamin		07966 563495	libbyboucher2003@gmail.com
<b>Tuesday 7.30 - 9pm Jubilee Room</b>				
Women's Institute Choir	Bev Riddell Maggie Heath	01934 811218 01934 813050	07970 475626 07761 102934	riddell2en@btinternet.com
<b>Tuesday 2.30-4.30pm (Sept-May) Friday 7-9pm Jubilee Room</b>				
Short Mat Bowls	Kevin Barrett	01934 811267	07855 225049	kevinbarrett240@btinternet.com
<b>Wednesday 9.30am Jubilee Room</b>				
Music with Mummy	Karen Marsh		07548 141505	musicwithmummy.karen@gmail.com
<b>Wednesday 7-8pm Jubilee Room</b>				
Pilates	Corinne Mutlow		07919 532960	coz@cmutlow.com
<b>Wednesday 7.30pm + shows in January, May &amp; September</b>				
Bleadon Players	Peter Gibbon		07859 001468	peter@mpgifa.co.uk
<b>Thursday 9:30-11:30 Term times Coronation Hall</b>				
Babies & Toddlers Group	Sophie Macey			<b>Facebook group: Babies &amp; Toddlers in Bleadon</b>
<b>Thursday 10-12noon Jubilee Room</b>				
Bleadon Art Group	Stevie Rhodes	01934 813497		
<b>Thursday 2-3pm Jubilee Hall</b>				
Tai Chi (over 60s)	Age UK		01823 345626	ageingwell@ageuksomerset.org.uk
<b>Thursday 2-4pm Oct-April Coronation Hall</b>				
WSM Croquet club / Whist	Sue Norfolk	01934 812128	07484 233086	suenorfolk99@gmail.com
<b>Thursday 6.15-7.15pm Jubilee Room</b>				
Yoga	Sayeeda Alam		07725 901810	info@sadayoga.co.uk
<b>1st Thursday 7.30pm Coronation Hall</b>				
Weston Music Society Concert	Jo Lucas	01934 812759		no emails
<b>2nd Thursday 7:30pm Coronation Hall</b>				
Women's Institute	Elaine Mellor (Secretary) Michelle Harper (President)		07854 628664 07780 688830	bleadonwi@hotmail.co.uk harper.a5@sky.com
<b>3rd Thursday 7.30pm Coronation Hall</b>				
Bleadon Coronation Halls Management Committee	Betty Paterson (Chair) Ian Gibson (Treasurer) Kevin Barrett (Secretary)	01934 812183 01934 814261 01934 811267		gilbet.paterson@btinternet.com igibson6@sky.com kevinbarrett240@btinternet.com
<b>4th Thursday 7.15 - 9.15pm Jubilee Room</b>				
Bleadon Sugarcraft Club	Sue Dennelly		07891 996707	bleadonsugarcraftclub@gmail.com
<b>Friday 9.30-10.30am Jubilee Room</b>				
Pilates	Emma Hunter		07787 563775	emma@ehsportstherapy.com
<b>Friday 2-4pm Coronation Hall</b>				
Friendship Group	Gordon Brown	01934 811926		no emails
<b>3rd Saturday 9am-12.00pm (both halls)</b>				
Bleadon Village Market	Jo Jones	01934 812370		jojonesbleadon@tiscali.co.uk
<b>YOUTH CENTRE</b>				
Monday 10:30am-12:30pm	<b>Recorder group (USA)</b>	Louise Harwood		harwoodlouise@hotmail.co.uk
Tuesday & Friday 5:30pm	<b>Tricky Paws</b>	Carrie-Anne New		trickypawsuk@gmail.com
Tuesday 8.30pm	<b>Dance the Night Away</b>	Sharon Inslay	07502 285547	
Wednesday 7-10pm	<b>Veterans Table Tennis</b>	Ann Sandford		ann@sandford-ca.co.uk
Thursday 7-9pm	<b>Youth Club</b>	Keith Pyke	01934 813127	keith.pyke@btopenworld.com
<b>CHURCH ROOMS</b>				
2nd & 4th Monday 10:00am	<b>Craft &amp; Chat</b>	Sara Hughes	01934 811008	
Tuesday 10:30am bi-weekly	<b>Woodspring Ladies Probus group</b>	Alison Hillyer	07768 736294	alhillyer@aol.co.uk
Tuesday 5:30pm	<b>Brownies</b>	Jacqui Hall-Scott	07730 498371	j.hallscott@btinternet.com





Property Agents  
Sales and Lettings  
Auctioneers

DAVID  
PLAISTER LTD



12



DAVID PLAISTER

PROPERTY AGENTS | SALES & LETTINGS | AUCTIONEERS

01934 815053

[www.davidplaister.co.uk](http://www.davidplaister.co.uk)