

# Bleadon News

Summer 2019

[www.bleadonparishcouncil.co.uk](http://www.bleadonparishcouncil.co.uk)

Issue 112

## Public Meeting 200 Homes?

Tell us what **YOU** think the  
Parish Council should say  
at the Planning Inquiry  
6th June, 7pm, Village Hall



**BLEADON**

Many contributions  
make up our local  
news—get involved!

**Bleadon is going Wild in 2019**



# Lifeline

Here when you need us...

**Sedgemoor Lifeline provides 24 hour assistance to vulnerable people living in communities across Somerset. Our fully trained staff are available 365 days a year, giving families peace of mind.**

**We are the only 24 hour lifeline service in Sedgemoor that can attend your home to lift you if you have a fall.**

We also offer other Telecare services such as smoke, carbon monoxide, fall and epilepsy sensors, which, if activated, will wirelessly connect to us immediately.

---

***TWO MONTHS FREE - limited offer.***

*Set up a Direct Debit and receive up to eight weeks free!*

---

---

**For more information on how Sedgemoor Lifeline can help you or a family member feel safe in their own home, please call Sedgemoor District Council on: 01278 435776  
or e-mail: [lifeline@sedgemoor.gov.uk](mailto:lifeline@sedgemoor.gov.uk)**

---

**[www.sedgemoor.gov.uk/lifeline](http://www.sedgemoor.gov.uk/lifeline)**

Lifeline is a service provided by Sedgemoor District Council

**Sedgemoor**  
IN SOMERSET

February 2019





### **Message from the Chairman**

Firstly, a massive vote of thanks and praise to all who organised and gave their time to deliver a magnificent May Day Fayre for the community. It is truly wonderful to see a community come together in this way where everyone enjoyed a traditional village event that raised much needed funds for the Youth Club and the Church.

The Local Elections are over and whilst it is good to see that your Parish Councillors have all put themselves forward to continue giving their time and energy for the benefit of the Parish, it is also disappointing that no one else felt able to stand for election. In talking with people around the village I get the impression that there is a reluctance based on personalities. This should not be the case. Everyone has an opinion, every opinion is valid and every opinion goes into the pot and shapes the actions of the Council. That is democracy. Have your say; it does matter and it does count. There is still one vacancy on the Parish Council and it would be brilliant if it could be filled by a young person to bring a new perspective and help shape the future of the Parish.

Jim Baines Chairman, Bleadon Parish Council

### **Parking**

Parking near the Queens Arms at the junction of Shiplate Road, Coronation Road and Celtic Way is causing considerable danger to road users and pedestrians. The Parish Council is liaising with North Somerset Council to review options for enforcement such as double yellow lines on all sides around that junction. However, we would rather see drivers using their better judgement and not parking there at all, without the need for unsightly lines and associated signage.

### **Neighbourhood Plan**

A very big THANK YOU to everyone who took the time to complete the survey in January – 281 were returned in total (online or on paper). By the time you read this we

will have analysed the results and comments and will be publishing them as soon as possible. Keep an eye on the noticeboards and the website ([www.bleadonneighbourhoodplan.co.uk/](http://www.bleadonneighbourhoodplan.co.uk/)) for updates. As always, any resident who would like to help develop the Neighbourhood Plan is welcome to join the group – it is about YOUR neighbourhood! Contact Gill (01934 813255) or Marian (07453 358318).

### **Allotments**

Nearly all the plots are now taken - only one half plot available. The allotment holders have done a lot of work to clear rubbish from the hedge-line by the foot-path. Thanks to Marshalls for the chippings and the kerb stones. Well done to all the allotment team and thanks to Bleadon in Bloom for the excellent work.

### **Bleadon in Bloom is Going Wild**

We want to thank our supporters for Bleadon in Bloom. Thatchers and their apprentices have been physically supporting the event and helping to build the orchards in to the ecology of the village. We have had so much help from Marshalls who have donated their time and many materials to the project including all the flowers that are now starting to grow and bloom along the banks, new paving slabs and shingle for the allotments, and the Planter which we hope will soon be at the entrance to the village by Huttons Garage. Don't miss the Bleadon Ecological Kick Off on the 9th of June at the Village Hall from 2pm. Chris Sperring from Mendip Magazine will be hosting the last part of the event, at 6.00pm to kick off a project to support our wildlife. There will be stalls and plenty to do as well as a performance from our esteemed Chairman on his Guitar! Not to be missed—this is **the** event to be at!

### **Bleadon Public Meeting**

We look forward to welcoming you to the public meeting taking place at the Village Hall on the 6th of June. We want to hear the views of the village about the 200 homes planned on the "Sanders Fields". Then we will incorporate this in to our opportunity to speak at the Public Enquiry in July. This is the last opportunity we have to listed to you and your ideas about this application.

### **Bleadon News**

Thank you so much for all your articles and extra thanks to our advertisers this time. We are starting to welcome new ones regularly. Good to see Huttons featured.



# Update from the Bleadon in Bloom Team

## Part One

# BLEADON

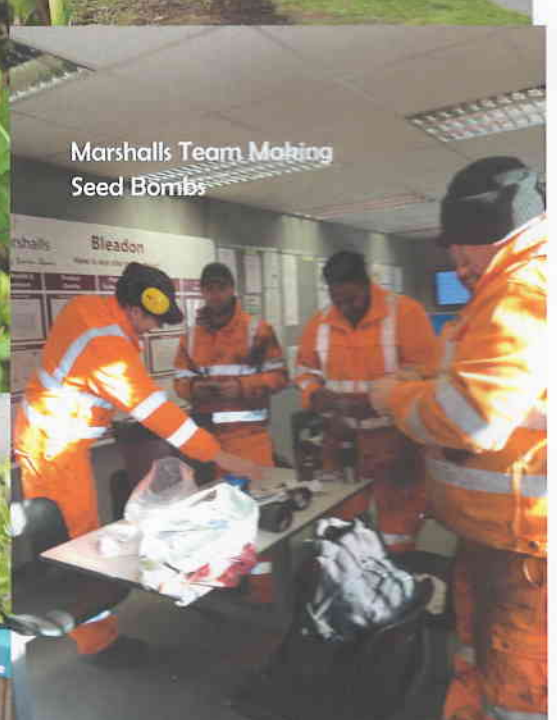


I think busy would be an understatement for Bleadon in Bloom Team, luckily we have several teams working together to make the whole thing. The Polytunnel team collected pots from the community and have planted up flowers donated by sellers and villagers. The Thatchers team have been digging up the banks and tidying up flower beds to plant wild flowers. Paul Harding and his team have been through the Rhyne on a little boat picking up litter. We have discovered wild flowers and baby foxes in our travels and stewardship. We can't even fit it all on one page!

There is plenty to do still and we need more and more help with every turn!



Digging in at the Rhyne and the Flowers from Westhaven School—donated by Marshalls and villagers



Marshalls Team Making Seed Bombs



# Bleadon Outdoor Festival—2019

Sunday 9th of June 2pm—7.30pm

Bleadon Coronation Hall



## Wild Bleadon Launch with Chris Sperring MBE - local ecologist and wildlife expert

Join us at 6.00pm in the Village Hall where we will be launching a project to catalogue, protect and improve our Wildlife across the Parish of Bleadon and the Levels. This local community initiative will be kicked off by Chris Sperring MBE. Many of our local organisations concerned with wildlife will be there.

If you care about our Bleadon Wildlife and want to learn more — then this is your opportunity to join in and get involved!

## Pot and Hanging Basket Competition

Classes (listed on page 26) include:

Age groups, On theme for Bleadon in Bloom (Beautiful and Useful),

Most inventive Receptacle.

Entries to be in by 12.00 noon at the Village Hall on the Day

## Children's Painting Competition Judging

**"Get Rid Of Plastic—Go Green"**

Entries in by 12.00 noon on the day at the Village Hall—will be judged by the visitors to the event.

Finalists to be entered in the South West area Bloom Competition—maybe a National Prize



Will be bringing their beautiful Owls

Marion Dare  
*Fantastic Singer & Comedienne*

From 3.30pm  
Great Fun

AND

Jim Baines  
*Superb Guitarist & Singer*

A promotional graphic for Marion Dare and Jim Baines. It features a photo of Marion Dare on the left and Jim Baines playing a guitar on the right, with the word 'AND' in the center. There are green shamrock icons scattered around.

Brought to you by

**Plant Sale, Pot planting, Bar, Cream Teas, Stalls and lots of Fun for all the family**





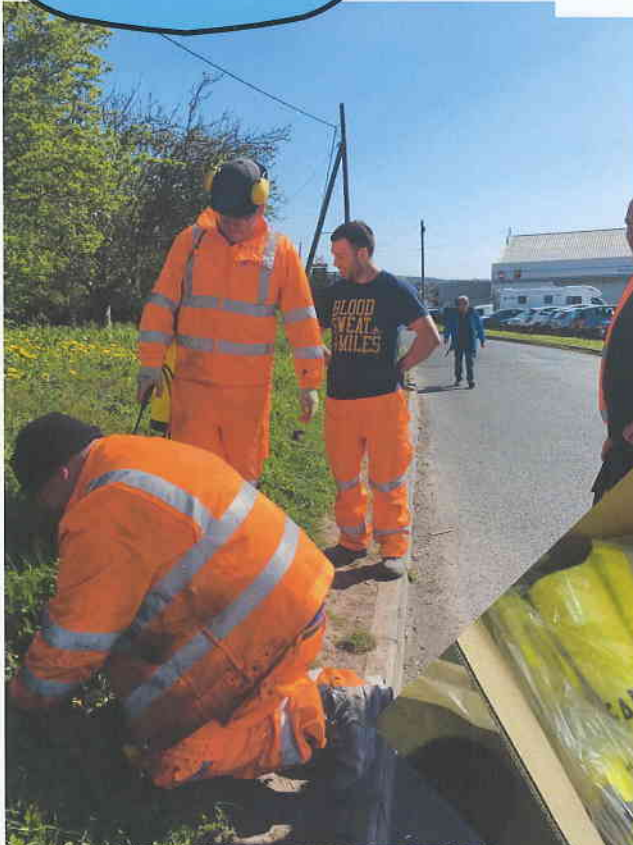
# Update from the Bleadon in Bloom Team

## Part Two

BLEADON



BLOOM



Marshall's team have taken great care to tidy up the Rhyne and plant wildflowers and Forget me Nots. These were bought by the Parish Council, donated by Marshalls and also donated by other villagers. We have been fortunate to win a grant from North Somerset Council which has helped with Bleadon in Bloom Hi Viz and some tools. We have had visits from the community trailer at Greendales which was really well equipped and we have booked this for our next jobs.

At the village hall the Patio area outside the Jubilee room has had a make over. There is more to do here but Nikki, Ian, Mike and Sue have made a huge start removing all of the old rubble and blocks.

Bleadon in Bloom team at the Allotments have also been given some support by Marshalls who delivered 19 tonnes of chippings to make a tidy track and some kerb stones that we will use to make a car parking area. This Allotments committee have transformed the whole place and they are now nearly full.

We would love more people on the team!!!

We still have jobs planned on the following dates—turn up and join in:

24th May Big Tidy —10.00 at the Village Hall

27th May Tubs Preparation — 11.00am at the Village Hall

30th May—8th June—Planting

9th June—Big Outdoor Festival

8th July—Judging





## Weston-super-Mare Croquet Club

Following the very necessary pollarding of the trees to our boundary on Bridge Road (we had experienced tall branches falling on the lawn side, therefore it was very possible branches could have fallen onto the road) we opened our season on March 26th on a brilliantly sunny day, much to the delight of over thirty of our members. Last year, as all in Bleadon will remember, the weather was appallingly wet until late April, followed of course by that incredibly dry summer.

The Club would like to apologise if any resident was inconvenienced during the pollarding procedure.

It's early days yet but we are looking forward to another successful season.

Last year our teams achieved very good results in the leagues. Our club competitions were most enjoyable and well attended. Throughout the week we have open play and organised club roll-up sessions.

As mentioned in our previous article National Croquet Day was on the 12th May when anyone could turn up between 11.00am and 4.00pm to try the sport of croquet. This was an open day and free of charge. We hope those of you who came along had a most enjoyable time.



Jeanette Stuchbery, Chairman

## Community Gardening in the Churchyard.

Our village Churchyard is a significant place in all sorts of ways. It links us with the past of the community in this place like no other area we have. Over the years Bleadon has changed a lot. Maybe one of the biggest changes is that almost all of us who live here now, did not grow up here. Those people who form our living link with previous generations are a very valuable part of our community, but not the majority they once were. Many of us will move away before we die, but those who lived and died here, and now rest in the churchyard, are here to stay.

plots, historically, this has been down to the family of the person who is buried there. As families have moved away, some plots. Have become very overgrown.



About two years ago, some of us decided to start meeting up for occasional working groups, mainly to cut back brambles and elder on overgrown plots. Each time we met, between four and eight people gathered and gradually the difference has really begun to show.

We started doing this simply because there was a need to cut back and tidy, but what we have also found is that it has been fun. Lots of fun through working together. People have got to know each other a bit more and beyond that there are all the conversations with people who are simply passing through. Each time we have gathered to work a real community feel has developed and we want to open that up to others who may want to get involved too. I think often the cup of coffee together and the friendships grown are just as significant as the practical work we get done.

Having had publicity around since the end of January, we will shortly have

some individual plots available for "adoption"!

The idea of "Adopt a Grave" is that some of the areas that have been overgrown could grow flowers and look good with a little regular attention. If you would like to "Adopt a Grave" please do let me know.

All this works in well with our new village "Bleadon in Bloom" project too. It's good when different things pull together in our community.

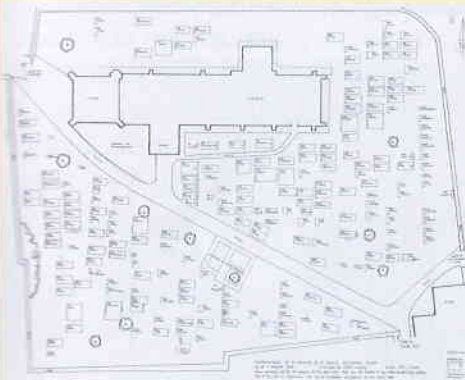
If you would like to come and join us, please do. We are planning to hold working groups on 25th May, 29th June, 3rd Aug and 7th Sept—all Saturdays—from 10am to 12noon. Also see the schedule of other Bleadon in Bloom days—as we prepare for the judging.

I want to say thank you to all of you who have already helped and welcome to all of you who might as we go forward.



Please do get in touch if you want to know more. And if you have time to spare to join then contact the team at Bleadon in Bloom as we are all working together for the betterment of the outside spaces in the Village.

Tim Erridge



In practical terms, the fact that many families have moved away means that there are many graves in the churchyard where there are now no local living relatives to care for the plots.

Bleadon Parish Council do a very good job of keeping the grass cut, the trees trimmed and the wall in good order, but it is not their job to look after individual

**Bleadon Village Market** is held every month in the Coronation Hall and Jubilee Hall.

It is run by a hard-working band of volunteers and we have some great regular stallholders selling delicious local produce, as well as an interesting mix of crafters to ring the changes. The Church book stall has an eclectic selection of books, and we also have stalls selling, bric-a-brac, cosmetics, toys, bedding plants and lots more. Our dedicated kitchen staff will provide you with hot snacks and drinks. Try a bacon and sausage bap or toasted teacake using produce from our stallholders.

The photo shows Maggie and Liz, two of our lovely kitchen gang, busy sizzling sausages.

# Bleadon Village

**MONTHLY**

# MARKET Saturday

15<sup>th</sup>  
June

20<sup>th</sup>  
July

17<sup>th</sup>  
Aug

21<sup>st</sup>  
Sept

**Coronation Hall and Jubilee Hall**

**BS24 0PG**

**9.30am – 12 noon**

30+ stalls with:

Fresh local produce. Old Spot Pork & Sausages.  
Goats Milk & Cheese. Bakery. Eggs. Pies. Savouries.  
Preserves. Cakes. In season Veg. Plants.  
Books. Crafts. Jewellery. Collectables. Gifts. Toys.  
Bric-a-brac.

Something new every month.

Delicious refreshments.

Find us on Facebook and [www.bleadon.org.uk/market](http://www.bleadon.org.uk/market)





# Whitehouse

Kennels & Cattery, Somerset

Whitehouse Kennels & Cattery are a family run pet boarding home. Having been in the animal care business for over 25 years we know the importance of your family friend and will provide a truly caring service.

Whether you are looking for pet boarding, relocating abroad, dog grooming, or buying a bed for your cat, Whitehouse Kennels & Cattery is the place for you!

## Services include:

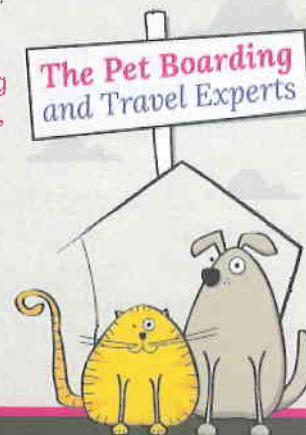
-  Pet Boarding
-  Day Boarding
-  Pet Export & Travel
-  Pet Shop
-  Cuddle Buddies
-  Collection & Delivery Service
-  Grooming Service
-  Wedding Doggie Services



Find us on Facebook



The Pet Boarding  
and Travel Experts



OPEN EVERY DAY

10am - 1pm & 2pm - 6pm

## For more information & prices contact us on:

T: 01934 750352 E: enquiries@p-e-t-s.co.uk or visit [www.whitehouse-kennels.co.uk](http://www.whitehouse-kennels.co.uk)  
Whitehouse Kennels & Cattery, North Rd, Eastertown, Lympsham, Somerset BS24 0HS

## News from Whitehouse

The village looks very summer like with its lovely displays of flowers and during the recent unusual warm spell we have even been sat outside "al fresco" for our lunch as the weather is definitely improving though it has to be said not quite nice enough to get my famous shorts out yet!!

The number of stray dogs is decreasing with micro-chipping legislation and the use of social media like Facebook which we use to try and reunite the dogs that come into us. Many of the stray dogs either don't have microchips or the microchip details held on the database are incorrect or out of date. Just a little reminder that all dogs should be micro chipped and if you change address or telephone number you must update the details! If you need any help please come and see us as we have microchip scanners and can help you ensure your dog's details are up to date. We still get some sad cases like the two little terriers running across the fields in St Georges badly matted and very smelly. After some grooming and lots of love they have now gone to a specialist rescue until they are ready to be rehomed.

Our Cuddle Buddy crew are still very busy visiting care homes and going out on loan. The team currently include Daisy the Labrador, Flossie the Retriever, Pugly the Pug, Pumpkin the Pug and Nelly the Pug (still in training!!). Pugly has started writing

to one of the residents in one of the homes and was invited to her 100th birthday party as her guest of honour and joined in all the celebrations.

Our Cuddle Buddy crew really are magic and to say a little thank you for what they do we arrange for them to have pet massages. Just seeing how our youngest Nelly reacts when she spots Becky arriving says it all - she wiggles all over with excitement.

A date for the diary. We are helping organise the Weston Rotary Dog Day on Beach Lawns, Weston super Mare. We had a stall with the girls from Weston Breast Cancer Support Group who are famous locally for their homemade dog treats and hand knitted dog coats. We also have something a little different. We are bringing our home made "Woofa Studio" - a pop up photography studio where you can take you own photos with some really crazy backdrops.

We are also supplying the backdrops at Bleadon Country Sports show on the 10th of August—this is at Appledore Farm and is a huge one not to be missed.

from Family and Staff @ Whitehouse

Do you have pain or stiffness in your foot as soon as you get out of bed that improves as you walk around? If so you may very well have plantar fasciitis!

The plantar fascia is a thick band of tissue that connects your heel to the base of your toes, running along the bottom of your foot. It acts as a shock absorber & helps to maintain your stability in walking & running. If the fascia is overloaded, this can result in irritation, inflammation & pain.

Symptoms:

- \* Pain in the heel (this can be a sharp/stabbing sensation or a deep ache/throb)
- \* Pain after prolonged rest
- \* Pain after prolonged activity
- \* Pain that worsens when standing on your toes or climbing the stairs
- \* Tenderness when pressing the bottom of the heel
- \* Pain when flexing the ankle (drawing your toes towards your knee)
- \* Limping (avoidance of putting weight through your heel)

Possible reasons for developing plantar fasciitis:

- \* Sudden & large increase in running or walking distance
- \* Lack of flexibility in lower back, hamstrings or calves
- \* Foot mechanics i.e. rolling inwards
- \* Being overweight thereby increasing the load going through the foot
- \* Wearing unsupportive footwear such as flip flops!
- \* Spending a lot of time on your feet
- \* Weakness of shin or gluteal muscles
- \* Restriction in ankle movement

How can I help myself?

Stretch your calf & foot muscles on a regular basis i.e. daily

Use ice massage - fill a small bottle with water & pop it in the freezer. Once frozen you can remove it & roll it under your foot.

Roll a tennis ball under your foot as an alternative or addition to the ice massage

Cut back on the activity that is causing the issue & cross train instead. So if you are having issues running or walking, try some low impact activities such as swimming, cycling, Pilates or yoga

See a health professional who can assess you & work out why you have heel pain & provide some rehabilitation advice to get you back to doing what you love!

If you are unsure if you have plantar fasciitis or of the cause of your foot pain please be sure to visit a health professional who can help you to resolve the issue!

About Me!

If you come to see me, I will listen to you, use my experience to try and identify the cause of your pain, help improve your symptoms & educate you on how you can help yourself going forward so that you can get back to, or continue the activities that you enjoy.

I will take a complete history, including any medical issues and details of any previous treatment you may have sought elsewhere. You will receive a full and thorough assessment prior to discussing a plan of treatment for you. The assessment & treatment of a problem can be adapted to fit work-related injuries, children, the elderly, amateur & professional athletes as well as those suffering from general aches & pains.

Important...

All treatment plans are individualised and designed specifically for your needs. Levels of pain and length of time of symptoms may dictate how we proceed in order for you to achieve your goals. I want to get to the bottom of why you are in pain or struggling to perform a specific exercise or task rather than just treating the symptoms.

In addition to my Sports Therapy work I am also a Pilates Instructor & I currently teach the Pilates class on a Friday morning at Bleadon Coronation Halls.

If you have any questions or there is anything that you would like to see in future editions, please feel free to contact me on 07787 563775 or by e-mail at [emma@ehsportstherapy.com](mailto:emma@ehsportstherapy.com).

**Emma Hunter**





### News from your community policing team

PCSO Mike Benfield will be joining the Villages team over the next few weeks and will begin to introduce himself to the community and residents. This means that PCSO Aisha will be leaving the smaller villages team but will still be a part of the larger Worle, Villages and Ashcombe team, so will always be happy to help!

PCSO Aisha is also the new Unit Leader for the WSM Police Cadets. We are a small unit of 14-17 yr. olds and we are looking at opportunities to help and support our local communities, whether this be at events, volunteering at coffee mornings or even helping with a leaflet drop. If you would

like to utilise the Police Cadets they can be contacted through [POLICECADETSWSM@avonandsomerset.police.uk](mailto:POLICECADETSWSM@avonandsomerset.police.uk).

PCSO Kayley is still the neighbourhood lead for Horse and Farm Watch. If you are interested or know somebody who may be interested please contact Kayley on [9671@avonandsomerset.police.uk](mailto:9671@avonandsomerset.police.uk) – she would be happy to get you signed up and can also offer property marking services and saddle tacking. The more sign ups the merrier! If you need any help and advice the local Beat Team can always be contacted via 101 or the Avon and Somerset Police Website”

**Aisha Mitchell**

### A New Beginning for the Bleadon Belles

The Belles were happy to welcome Meg Brand, their new Musical Director, at the beginning of April, and are really enjoying rehearsals in preparation for a charity fundraiser this summer. They are also very pleased to welcome new members Bev, Moira, Sue and Ruth.

Joanne Jones



## Eastern Spice

29 Orchard Street, B823 1RQ

01934 645072

We sell Indian, Thai, Chinese Spices

Opening Times 10.30am to 6pm Monday–Saturday



## Indian Massala Restaurant



At the Indian Massala Restaurant in Bleadon, we've given authentic Indian cuisine a contemporary twist. Traditional Indian Food is served within a relaxed environment that exceeds many people's expectations.

Tel: 01934 814999



**FRACKING AND HOW IT COULD EFFECT BLEADON**

Petroleum Exploration and Development Licences (PEDLs) have been granted for the whole of the coastal area of Somerset (see map). In 2012 an application to drill in Keynsham was withdrawn after geologists said that it was almost certain to contaminate the Roman Baths. Now the company is looking to do the same thing at the end of the Mendips.

At least two Bleadon landowners have been approached by Infinity Energy for permission to do a walk-over survey. If the results of this are favourable, it will be followed by an exploratory drill, which currently needs planning permission but this layer of authority may be removed. There have been objections to this proposal from many local authorities, including North Somerset but the oil industry can be very influential. Finally a planning application for extraction would be made to North Somerset Council. If NSC objects, the Government may override local democracy, as it has done in the North of England.

One of the problems for the Mendips is the high probability of pollution of the interlinked cave system from chemicals and the hydrocarbon product. The pristine environment of the caves might lose unique flora and fauna, including bats. Caving itself might become prohibitively dangerous if large amounts of gas (associated with the oil) mix with the air.

And then there is the matter of climate change. It is counter intelligent that Government can be considering opening up new and dirty ways of extracting

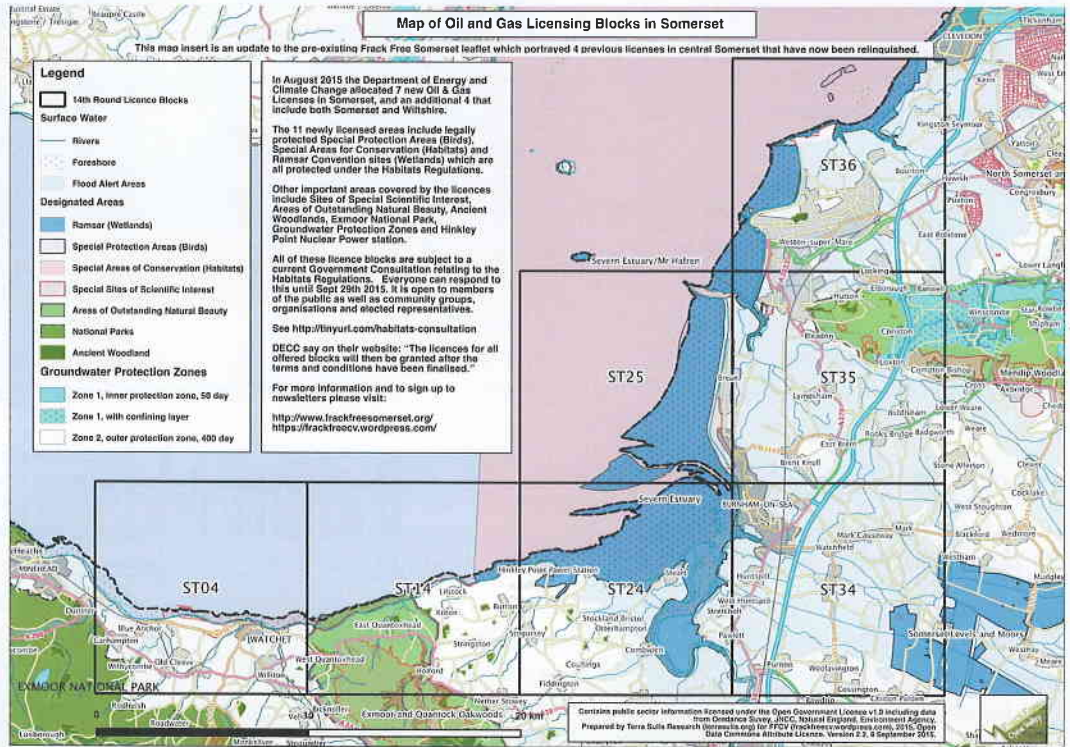
yet more fossil fuel when scientists and concerned people are pleading with them to leave fossil carbon in the ground.

This battle is winnable. Weston’s MP, John Penrose, has said that if local communities are against fracking, he will oppose it, and a sample survey in neighbouring Hutton showed 87% of residents are against the threat of fracking. Our MP, District and Parish Councillors need to know what local feeling is like.

There will be a village meeting in Coronation Hall at 7:30 pm on the 11th of June to bring us all up to speed on this serious, but solvable, issue.

**Dr Richard Lawson**

**01934853606**



**Note from the Editor**

*The views expressed in Bleadon News are not necessarily those of the Parish Council or the Editor*

Our thanks to the leaflet distributors as the Bleadon News is delivered to every house by a team of volunteers.

Bleadon News is your paper—please contribute you news and views and articles and contact us about Advertising. The anticipated copy deadline dates are 8th August, 8th November 8th February.

Contact the Editor Kirsten Hemingway [writer@kirstenhemingway.co.uk](mailto:writer@kirstenhemingway.co.uk) for advertising rates and information.

*The Editor reserves the right to reject articles or adverts for any reason.*



## 18 years of Fitness & Fun In Bleadon

18 years this June of teaching Exercise in Bleadon Village and classes are still going strong with ladies who actually attended my very first class back in 2001! It's lovely as they really are part of my family. They have seen me have a child and watched her grow up over the years and have always been interested in Ellie's future dancing career – well you know she obviously got the moves & rhythm from me!

My Ladies Fun Fitness Classes are held every Monday in the Bleadon Jubilee Hall from 7pm & 8pm

Both classes have the same element in each. The 7pm is a moderate class and the 8pm is slightly higher paced.

The classes consist of warm-up exercises, then an aerobic workout to music, at which we point we often find ourselves singing along, followed by core exercises on the mats and a cool down. Every week we use a different exercise aid eg: Small Hand Weights, Chairs for toning Legs & Bottoms, Resistance Bands Seated & Standing plus Drumsticks which are fun to use. We have been known to use Pom Poms!

All equipment supplied

The 8pm class also has a Circuits Evening thrown in every 4 / 6 weeks which is a lot of fun with different work stations dotted around the hall with exercises & equipment.

The motto in my classes has always been the same; Keep Fit whilst having Fun

If you fancy a FREE Class please do drop into class anytime, (£4 weekly) or call Marie Keele on 07939038071



## Wildlife Watch-Outs for the Summer



Once the warmer weather comes along, a lot of people feel the urge to tidy their gardens. You need to be aware that any time between March and August, birds may be nesting in your trees, bushes and hedges. As it is an offence to disturb any breeding bird it's best not to do too much to them during the breeding season. At worst you could dislodge a whole nest, but even if you avoid that, you may be removing cover and making the nest more vulnerable to predators. If your nesting birds do manage to produce a brood of fledglings, the general rule is that if the youngsters have enough wing feathers to make short hopping flights leave them to their own devices. If possible keep your cat or dog out of the way, but the parents will feed them. It is their strategy to leave the nest to avoid the whole brood being predated together.

Should you find fledglings too young to have any wing feathers, they will probably need the help of a local rescue centre such as Secret World.( ring for advice if you are unsure) Even very young chicks can be hand reared and returned to the wild.

Also when tidying the garden be aware that other animals such as frogs, hedgehogs and slow worms may be lurking in the undergrowth. Many hedgehogs suffer horrendous injuries from strimmers and garden machinery.

### Water Voles

Water vole populations typically reduce by 60% over the winter. In Spring, the longer days coupled with the increase in activity needed to breed and raise young, make sightings more likely. Particularly near to dusk you are likely to see voles feeding and going about their lives, but they can be spotted at any time of day throughout the summer, if you are lucky. Our population of voles is important, as they are not common in North Somerset. There is some concern that there has been some predation by a mink (a non-native, but voracious predator), so it will be interesting to see how much impact this has had. We also need to know more about the extent of our local colony. We have lots of sightings on Bridge Road and Coronation Road/Bleadon Road, but would

welcome records from elsewhere in the area. The "in and around Bleadon" Facebook group is a good place to report sightings.



There are also many photographs of the local wildlife in this Facebook group. The group can be browsed by any Facebook user. If you join the group you can also submit your own photographs and comments.



Bill Hewitt



# Bleadon Wild

## **“WOW, There is a peregrine falcon on the church tower!”**

While walking through the churchyard, I was really delighted to spot a peregrine falcon sitting on the church tower preening. It was the first time that I had seen one of these magnificent birds perching in the village. All I had seen before is the occasional bird flying over. Peregrines, the fastest animal on the planet, able to reach speeds of around 200 miles per hour, are becoming increasingly at home in built up areas,



and church towers make ideal artificial cliffs for nest sites. This particular bird just popped in for a flying visit, but I for one would be delighted if a pair were to take up residence there in the future. They are one of God's creatures after all.

## **Swallows, Swifts and House Martins**

One of the early signs that summer is on its way is the return of swallows and house martins. Having spent their winter in sub-Saharan Africa, with lions and crocodiles for company, they come back to the UK because our long days and abundance of insects are ideal for raising young. Typically they will have two or three broods throughout the summer, with late broods having a reduced chance of survival to adulthood. When they start gathering on telephone wires in September in preparation for their long migration, it is a sure



sign that summer is coming to an end.

Swifts don't arrive until the beginning of May and depart earlier than the swallows and house martins. They spend almost their entire life on the wing, only landing at nest sites in the breeding season. As houses are being modernised there are fewer gaps and crevices on buildings to use as nest sites. If you have a tall house or outbuilding, you can provide swift nesting boxes to help them. The population of swifts has declined sharply so they need all the help they can get. The sound of screaming parties of swifts darting around the sky is one of the defining sounds of summer.

## **Adders**

Adders, Britain's only native venomous snake, hibernate over the winter, emerging as early as January for the males and March for the females. They are present in the area, notably on Hellenge Hill. Adders bites are very rare and almost never fatal, with most bites being dry bites (no venom is injected). Adders are shy animals and will make a speedy retreat if they feel you are getting too close. They are only likely to bite if they feel threatened or are cornered. One word of warning is that there has been an increase in bites of people trying to photograph them with mobile phones and getting too close. If you want to photograph them, keep at a respectful distance. Because they are cold blooded they are most likely to be found on sunny slopes and near stone walls basking in the warmth of the sun. Adders pair up in spring time and the females, having incubated the eggs internally, give birth to up



to 20 young in the late summer months. A female will only breed once every two to three years. This year I was fortunate to find courting couples on several occasions, which is a rare privilege. Adders have a clear diamond pattern down the length of the body, the males being a silvery grey colour with a black zig zag and the females a greeny brown with a more reddish zig zag, although before sloughing (shedding their skin) the colours become very dull and muted often causing confusion. You can also get melanistic black adders. This diamond pattern distinguishes them from the non venomous grass snake. The other snake-like animal we have in good numbers in Bleadon is the slow worm. These are not snakes at all, but legless lizards. Slow worms are completely harmless and are very good for the garden.

**Bill Hewitt**



## Experts in our Community

### Millennials still consider owning a home as a long-term financial goal

Property expert, David Plaister, reveals that research has found that millennials still consider owning a home as a long-term financial goal.

Research by MillennialMoney found that 64 per cent of this age group are optimistic about achieving their future financial ambitions, compared to less than half (47 per cent) of their Generation X predecessors and only four in 10 (39 per cent) Baby Boomers.

Pauline van Brakel, chief commercial officer at Yolt, explains: "It's clear that millennials are both optimistic and realistic about their financial goals.

"Far from being a frivolous free-spending generation, our #MillennialMoney research shows that lots of young people are sacrificing their day-to-day standard of living to future-proof their finances. Purchasing a property is an area that has been particularly hit by this.

"Our research really debunks millennial money myths and attitudes, proving that millennials are more focused on saving, meeting financial goals and investing in their financial futures."

Whilst the recent Budget included an extension of the Help to Buy scheme and a stamp duty break for shared ownership properties, both aimed at supporting first time buyers onto the property ladder, purchasing a home is simply no longer a realistic goal or priority for many millennials.

However, a lack of homeownership ambition amongst millennials isn't due to the 'frivolous spending' that is so often associated with this age group.

Millennials are saving more as a percentage of their monthly income to fund future financial goals than any other age group. On average, millennials are putting away 25 per cent of their income each month, the highest proportion of any age range included in the research.



These relatively high saving rates might be made possible by the fact that 26 per cent of millennials still live at home.

For help with all property matters, speak to David or a member of his team on [01934 815053](tel:01934815053) or drop into the office at 12 South Parade, Weston, or visit [www.davidplaister.co.uk](http://www.davidplaister.co.uk)

Ed Plaister

**BRIDGE GARAGE**  
Bridge Road, Bleadon, BS24 0AU 01934 812206  
[enquiries@bridgegarage.com](mailto:enquiries@bridgegarage.com)

Servicing & MOT  
Car sales  
Repairs  
Computer diagnostics  
Air conditioning  
Attended Filling station

**Because we care**

<b>Mon 7-8pm &amp; 8-9pm Jubilee Room</b>			
Marie Keele	Aerobics	01934 270853 / 07939 038071	mariekeele@hotmail.co.uk
<b>Tues 10.30-12.30 Coronation Hall</b>			
Tina Dodd	Art Class	01934 843660	sandtdodd@btinternet.com
<b>Thurs 10-12noon Jubilee Room</b>			
Stevie Rhodes	Bleadon Art Group	01934 813497	
<b>Mon 2-5pm Coronation Hall</b>			
Doug Norfolk	Bridge Club	01934 812128 / 07547 163862	dougn@btinternet.com
Judith Hutton	Bridge Club		judithhutton341@googlemail.com
<b>Tues 5.30-7pm Jubilee Room (Term time only)</b>			
Jacqui Hall-Scott	Brownies	07730 498371	j.hallscott@btinternet.com
<b>Thurs 3.30-5pm Jubilee Room Term time only</b>			
Linzi Furneaux	Dance School	07787 338003	linzi@theschoolofdance.co.uk
<b>3rd Mondays 7-10pm Coronation Hall</b>			
Debbie Thorne	Holistic Therapy	07905 537118	debbiethorne37@hotmail.com
<b>Fridays 2-4pm Coronation Hall</b>			
Gordon Brown	Friendship	01934 811926	NO EMAILS
<b>3rd Thursdays 7.30pm Coronation Hall</b>			
Les Masters (Chair)	Halls Management Committee	01934 811976	lesleymasters246@btinternet.com
Ian Gibson (Treasurer)	Halls Management Committee	01934 814261	igibson6@sky.com
Kevin Barrett (Secretary)	Halls Management Committee	01934 811267 / 07855 225049	kevinbarrett240@btinternet.com
Scott Morris (Players)	Halls Management Committee	07963 747572	scott@dotphotographic.co.uk
Betty Patterson (Village)	Halls Management Committee	01934 812183	gilbet.paterson@btinternet.com
Dave Shephard (Village)	Halls Management Committee	07884 270476	carol51@tiscali.co.uk
Gill Williams	Halls Management Committee	01934 813255	gwilliams28@btinternet.com
Jane Derrick (WI)	Halls Management Committee	01934 811464	jane.tony@talktalk.net
Pam Lamb	Halls Management Committee	01934 812706	pamlamb@btinternet.com
Steve Hartree	Halls Management Committee	01934 811849	stevenhartree194@btinternet.com
<b>3rd Tues (Oct-June) 7.30pm Coronation Hall</b>			
Libby Boucher	Horticultural	07966 563495	libbyboucher2003@gmail.com
Rose Benjamin	Horticultural		
<b>3rd Sat (both halls) 9-12.30pm</b>			
Jo Jones	Market	01934 812370	jojonesbleadon@tiscali.co.uk
<b>2nd Monday 7.30 Coronation Hall</b>			
Steve Hartree	Parish Council	01934 811849	stevenhartree194@btinternet.com
Marian Barber	Parish Council	07453 358318	parishclerk@bleadonparishcouncil.co.uk
<b>1st, 2nd, 4th &amp; 5th Tues Sept-May. 7.30pm. Coronation Hall</b>			
Trevor Hartgroves	Photographic	01934 239011	t.hartgroves@sky.com
Mark Frisby	Photographic	01934 812573 / 07796 693032	marknfrisby@yahoo.com
<b>Wed 7-8pm Jubilee room</b>			
Corinne Mutlow	Pilates	07919 532960	coz@cmutlow.com
<b>Fridays 9.30-10.30am Jubilee Room</b>			
Emma Hunter	Pilates	07787 563775	emma@ehsportstherapy.com
<b>Wed 7.30pm &amp; shows 4th weekend in Jan, May &amp; September</b>			
Peter Gibbon	Bleadon Players	0785 9001468	peter@mpgifa.co.uk
<b>Tues &amp; Sun 2.30-4.30pm (Sept-May) Fri 7-9pm (all year round) Jubilee room</b>			
Kevin Barrett	Short Mat Bowls	01934 811267 / 07855 225049	kevinbarrett240@btinternet.com
Graham Rogers	Short Mat Bowls	01934 811571	
Paul Shand	Short Mat Bowls	01934 814445 / 07970 868163	
<b>4th Thurs 7.30-9.30pm Jubilee Room</b>			
Sue Dennyly	Bleadon Sugarcraft Club	07891 996707	bleadonsugarcraftclub@gmail.com
<b>Wednesdays Coronation Hall 9.30-11.30am Term Time only</b>			
Rachel Booth	Toddlers	07856 125163	boothr12@yahoo.co.uk
Catherine Saunders	Toddlers - Treasurer		catherine_saunders@hotmail.co.uk
<b>2nd Thurs Coronation Hall 7.30pm</b>			
Kate James - Secretary	Womens Institute	07775 795977	bleadonwi@hotmail.co.uk
Michelle Harper - President	Womens Institute	07780 688830	
Karen Grainger - Treasurer	Womens Institute	07795 546058	
<b>Tues 8-10pm Jubilee Rooms</b>			
Viv Kimber	Womens Institute Choir		v.kimber@btopenworld.com
Jane Derrick	Womens Institute Choir	01934 811464	jane.tony@talktalk.net
<b>Oct-April Thurs Coronation Hall 2-4pm</b>			
Sue Norfolk	WSM Croquet/Whist	01934 812128 / 07484 233086	suenorfolk99@gmail.com
<b>Mon 9.30-10.30am Jubilee Room</b>			
Cheri	Yoga	07717 290708	info@uniquebalance.co.uk
<b>Other Contacts</b>			
Kate James	Bookings Officer	01934 814955 / 07775 795977	bleadoncoronationhalls@gmail.com
Tony Derrick	Security	01934 811464	
Keith Pyke	Youth Club Hall	01934 813127	keith.pyke@btopenworld.com
Chris Butler	Bleadon Bob		bob@bleadon.org.uk
Bill Blacklock	Caretaker	01934 813031 / 07747 801753	

**BLEADON PARISH COUNCILLORS ATTENDING:**

DATE	MEETING	PURPOSE
6 June	Public Meeting regarding 200 homes appeal – discussion to inform the Parish Council's response at the Appeal.	Public meeting Council
10 June	Parish Council	

24th May 2019 Bleadon in Bloom Tub Preparation Meet 10.00am at Bleadon Village Hall  
 9th June 2019 Bleadon Outdoor Festival, Village Hall 2pm – 7.30pm  
 8th July 2019 Bleadon in Bloom Judging Day 12.30pm



## OVER EIGHTY AND GOING STRONGER THAN EVER

Bleadon's many pensioners may think the headline refers to some of their friends, and no doubt there are some who fit the description, but it is one of Bleadon's most venerable institutions that I am happy to label in this way. It is over eighty years since what was then the Parish Hall was given to the village by the Church, and 1937 happened to be the year when George VI was crowned. To mark the occasion The Street was renamed Coronation Road and the hall was likewise renamed. To look after this building on behalf of the village a management committee was set up and it is still doing the job in 2019.

The job nowadays, however, is vastly different from what it was even forty years ago, let alone eighty. Until just over twenty years ago there was only one hall, which could not possibly have coped with today's demand, and hirers' expectations have risen. We provide a disabled toilet, a nappy-changer, a sound system, a projector and screen, wi-fi, flow-through water boilers, a dishwasher, dedicated cupboards for regular users, none of which was available in the old hall. The Licensing Act 2003 meant we had to apply for a premises licence, and to make things easier for us and for hirers we decided to include the sale of alcohol, which entailed finding somebody to become D.P.S. (more of that later). Obviously the cleaning and maintenance requirements have risen accordingly.

When Joanne Jones retired from the increasingly demanding role of bookings officer we were lucky to find Kate James to take over. Last year we were again lucky to find Bill Blacklock to take on the new but necessary role of hall supervisor. This year we have just needed to find somebody to replace Anne Bird-Kellogg as hall cleaner. Anne has done the job in a most conscientious and responsible way for several years and we quite understand that she felt the time had come to hang up her mop. This job has now been taken up by Jo Howitt, who lives within a few minutes walk of the hall, so our team is now complete again and with any luck no replacements will be needed for some considerable time.

A final change is that Bill Blacklock, having done a course, passed an exam and survived a DBS check, now has a Personal Licence to sell alcohol and will soon be anointed as Designated Premises Supervisor of the Coronation Hall, thus relieving me of the responsibility. This grandiose title replaced the simple "landlord" when the Licensing Act came into force in 2005, and it also involves responsibility for the proper administration of the other parts of our licence, such as live music and theatrical performances.

As I write today I think of a few forthcoming events at the halls: an election (maybe two?), the May Day Fayre, dance exams, one-act plays, a wedding reception, all in addition to the many regular events that enhance life in Bleadon. This institution really is going stronger than ever.

Les Masters

## BLEADON GARDEN SERVICES Landscape Gardening

Fully Qualified Gardener and Landscape Designer

- ✦ All forms of Garden Maintenance - no garden too small
- ✦ Correct shrub pruning techniques
- ✦ Landscape/Garden design
- ✦ Garden Overhauling / clearance

30 Years experience including Redesign and re-landscaping of numerous Public Parks

CONTACT: Joe Souly, Hillcote,

Bleadon Hill,

07903 323885





## Your Parish Council

NAME	ADDRESS	PHONE NUMBER
Jim Baines (Chairman)	Shalom", Purn Way	814243
Mary Sheppard (vice Chairman)	The Incas, Bleadon Road	812921
Steve Hartree	Chestnuts, Chestnut Lane	811849
Kirsten Hemingway	Southerly, Purn Way	814450
Jo Richardson	Sellicks, Celtic Way	07859 066400
Andy Scarisbrick	Westdown Cottage, Purn Way	07747 626875
Anne Selway	Jackstones, Purn Way	07514 531530
Gill Williams	5 Pine Lea	813255

### Soon it'll be five years!

Doesn't time fly! I started as your vicar and the vicar for Bleadon Hill and Bournville too on 25th September 2014. Surely not nearly five years ago! But it is!

There is also the saying that goes, "time flies when you are enjoying yourself!" Although there have been some very very challenging points in my time here, I do very much enjoy being here.

When I first looked at coming, there was something about the combination of Bleadon and Bournville that seemed to have a real spark of life about it, this unexpected, some would say "odd ball" combination, looking to see how shared life can be. And now, nearly five years in, I can say I truly love it. On the one hand, it stops me getting in a rut. It constantly makes me ask again and again, what does true love and genuine community look like here in this specific situation with these specific people, and of course with different combinations of very different people each day.

The variety is so stimulating and makes each day an adventure. Such a privilege.

But along side the contrasts, there is the potential for shared community, for inspiring each other and sharing life giving insights out of often very different ways of living. So often, so many of us, get in our box and stay in it, but we don't have to! For me being here has been a glorious experience of variety which has helped my confidence grow and made me more able to confidently simply be

myself.

I want to thank you all for all the different ways you have been part of sharing life together up till now. I wonder what the next five years will bring?

With much hope,

Tim.

### New faces!

It has been a great joy to welcome quite a number of new people into the shared life of the Bleadon Church Community over the last few years.



At the end of June we will be welcoming Rev'd Patrick Webb (Pat) to come and work with you all and alongside me for three to four years. Pat will be our

Curate (Assistant Vicar) working along side me in Bleadon, Bleadon Hill and Bournville. He is right now completing his college training and he will in effect be serving his apprenticeship when he is with us.



Pat will be ordained as a deacon in Wells Cathedral on 30th June. His first Sunday morning service in Bleadon will be at 10.15am on 14th July.

If you see him and his family around, please do introduce yourselves.

Tim Erridge

### Bleadon Church "Open Tower days" 2019

We are planning to have the church tower open so you can climb to the top and enjoy the view on:

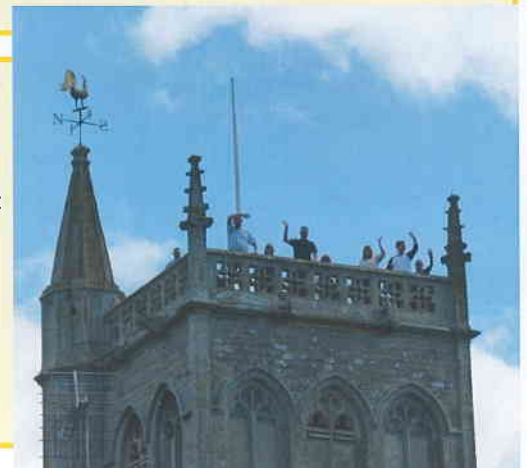
14th July, 11th Aug and some dates in September that are yet to be confirmed.

This will be between 2pm and 4pm each day and cost £1 per person.

Sadly, for safety reasons we can not allow children under the age of 8 years to go up.

Tea and cake will also be available at ground level.

For full briefing please see [www.bleadonchurch.co.uk](http://www.bleadonchurch.co.uk)





# THANK YOU BLEADON

Once again, someone blessed Bleadon's May Day Fayre with fine weather. People came in their hundreds to enjoy a day of fun, new challenges and festivities. It was a fitting reward for all the hard work that the many volunteers put in to ensure this May Day success.

Over a thousand people came from near and far to enjoy all the fun of Bleadon's May Day Fayre. **Thank you to all who came and supported this big fundraiser.**

This year saw some new innovations. Part of Coronation Road was closed to traffic to make it safer for pedestrians as they walked between the Coronation and church sites. Hopefully, this is something we can continue in future years.

The £2 admission charge included free games in the play area. This proved so popular that we ran out of prizes!

Weston Woodturning Circle demonstrated their crafty skills. Weston Superstars lifted spirits with a brief gymnastic display of young talent. Brave teddy bears zipped from the church tower.

**Over 100 people helped on the day - providing food and refreshment, organising activities, erecting and dismantling marquees, running stalls, providing freely equipment, energy, time and expertise.**

**Too many to mention here, but you know who you are and we thank you.**

A stunning BBQ kit raffle prize was sponsored by local businesses - AA Flooring, Axe Valley Vets, IDS and Webglu.

All the profits made on the day help support our lovely parish church and Bleadon Youth Club.





# A TALE OF TWO TOWERS

Two towering new attractions helped ensure that this year's May Day Fayre had eyes turned skywards and hearts a'pumping. We had Teddy Bears braving the 50m zip wires from the church tower.

Closer to the ground the YMCA brought along their soaring climbing tower to challenge youngsters from 5 to 65 years old. Judging from the funds raised we must have had over 70 youngsters face up to the challenging climb.

Church Tower Challenge  
**TEDDY ZIP WIRE**  
Is your Ted brave enough?



Teddies and soft toys brave enough to face the 50m drop from the church tower received bravery awards.





## **Bleadon Country Stores &**

### **Post Office**

Summer is upon us and we now have Amanda's famous bedding plants for sale. At the same time, we are also selling the local sweet strawberries in both small & large punnets. The Patche's 'Wilja' sacks of potatoes proved very popular & they will be back when the season starts again in September.

Along with Jon Thorner's fresh & cold meats we also have in stock, meat from Worle Village Butchers who won the prestigious 'Independent Retailer of the year' award. They can supply us with a large variety of fresh & cooked meats at short notice so, if you would like any particular cuts of meat or, meat for a BBQ feel free to ring us & we will order it for you.

Following a recent medical emergency incident in the shop, Rob & Alistair House have installed a defibrillator at the entrance to the shop.

The local Police will be setting up a van in our car park once a month (as a trial) for villagers to ask

questions, make suggestions and voice their views.

We would like to wish a fond farewell to Josh Williams who worked in the shop Sundays & Bank Holidays. We are now looking for someone to replace him. We are also looking for someone to cover holidays for Jaz who runs the 'Brodericks Fine Foods' business (selling quality ice-cream & desserts) and to assist her during the week with Book Keeping etc. The person required must have good 'customer service' skills and be willing & able to drive.

The new ice-cream, 'Langage' will be available in the shop shortly. It is made in Devon using the milk from Guernsey and Jersey cows and comes in a variety of delicious flavours.

Don't forget our Post Office is virtually the local equivalent of a Bank, offering; Free cash withdrawals (up to your cash point limit), cash deposits, cheque deposits + Euros available on demand.

We look forward to seeing you.

**Heather Bowman**

## **The Queens Arms**

We are Kerrie and Alan and we are the new Landlord and Landlady of the Queen's Arms. We are excited to be moving in on 3 June and will hopefully be reopening by Friday 7 June. The outside of the pub will be undergoing some maintenance work in the meantime, and there will be lovely new signage.

Alan has over 30 years' experience of running pubs and clubs, and Kerrie worked as a PA for Somerset County Council before leaving to join Alan in the hospitality trade. We love meeting people and everyone will receive a warm friendly welcome.

We have run a Village pub together and a large town pub and more recently a pub in Brixham. We are really happy that we are returning to a Village pub where we can be part of the community and get to know all our customers. We are keen to be involved in any events in the village and are already planning our hanging baskets for Bleadon in Bloom.

We are looking forward to meeting you all soon so please pop in and say hello and if you have any suggestions or ideas for events that you would like to see going on at the Queen's Arms, let us know and will do our best to accommodate them.

Our big launch will be on Saturday 6 July when Alan will be celebrating a special birthday and we are planning on having a Pig Roast and live music so please keep that date free!

**Kerrie and Alan**





79<sup>TH</sup>  
**BLEADON  
COUNTRY SPORTS**  
*Show & Fayre*

**SATURDAY 10<sup>TH</sup> AUGUST 2019**  
Appledore Farm, Lympham

Commencing 9.30am

Companion Dog Show      Teddy Bear Show

Entry Fee - £1 for cars  
Donations for pedestrians

Proceeds to Dorset & Somerset Air Ambulance

Show Jumping - Showing - Farmers Market - Clear Round  
Native Breeds Show - Gymkhana - Fun Sports

### The Return of Bleadon Sports

Brought back to life, the Bleadon Sports Show has been modernised for a contemporary audience.

Don't miss this event—participation at your own risk. Its too much fun for some!

### Murder Mystery Night

Friends of Bleadon church are holding a dinner and theatre evening on

20th July @ 7.30 in the Coronation Hall.

Dinner - A taste of France

Baked Camembert  
Chicken or Vegetarian Coq Au Vin  
Cream brûlée

Enjoy a murder mystery written and directed by Jacqui Hall-Scott

Tickets £12.50  
from  
Cathy Heycock 01934 813314  
Liz Scarisbrick 01934 813125

Limited tickets for one night only, so please book early.

Liz Scarisbrick

With kind permission from Samuel French  
BLEADON PLAYERS PRESENTS

*Agatha Christie*  
**APPOINTMENT  
WITH**  
DEATH

Directed by Charlotte House

**26<sup>th</sup> - 28<sup>th</sup> September 2019**

Tickets only £8 per person (incl of booking fee if book online)  
Tickets available at Bleadon Post Office or via  
[www.bleadon-players.co.uk](http://www.bleadon-players.co.uk)

### Bleadon Players

'Appointment With Death' by Agatha Christie is, in one way a typical Agatha Christie play (many accents, posh people and less posh people, suspicions and suspense, and most importantly a dead body or two) but in another way this play is subtly different. An assorted group of travellers find themselves thrown together on an expedition to the rose red city of Petra. At the centre of the group are Mrs. Boynton and her four stepchildren who never leave her side.

This apparent devotion however is actually a façade for something far more sinister. Sarah King, a young English doctor, and her colleague, the eminent psychologist, Dr. Theodore Gerard, find themselves embroiled in a battle to free the children from the sadistic grasp of a tyrannical woman. This chilling play offers a unique take on the classic murder mystery, where Christie explores the realms of the sadistic mind and the devastating effects of long term psychological abuse.

Another difference is that neither Poirot nor Miss Marple appear, so the detective role is Colonel Carbury, which makes for an interesting twist on the normal Christie formula. You really shouldn't miss this Bleadon Players production, which is on from September 26<sup>th</sup>-28<sup>th</sup> at 7.30 in the Coronation Hall. Tickets available online or, as usual, from Bleadon PO.

Charlotte House



## Bleadon Night Skies

The days are now getting longer as we head towards the Summer months and the sky isn't fully dark now until around 10.30pm. For those that wish to stay up late on any clear night then there are plenty of wonderful sights to enjoy. Here are just a few to look out for.

Look towards the southwest and the constellation of Leo dominates. This constellation is one of the few that does actually look like what it's supposed to represent.



Leo Triplet

Regulus is the brightest star in the constellation and resides at around 80 light years from the Earth and is actually the brightest star in a quadruple star system. It also has a brightness of around 150 times that of our own Sun and is roughly 3 times its diameter which equates to two and a half million miles.

If a small telescope is available then a lovely object to view is the Leo Triplet, a famous group of galaxies that sit to the lower side of the constellation itself. Galaxies are objects that contains billions of individual stars and they are completely separate to our own Milky Way galaxy. This particular group sit approximately thirty-five million light years from us, that means the light that is seen has been travelling for this amount of time to reach our eyes. This also means we see objects as they were in the distant past so looking through a modest telescope really is like having your own personal time machine!!! On the east at around the same time there is also another famous con-

stellation, that of Hercules.

With a decent pair of binoculars, it is possible to make out the best globular cluster on the northern hemisphere known as M13, the M



M13 Globular Cluster

standing for Messier, the surname of the great 18<sup>th</sup> Century French astronomer Charles Messier who created a catalogue of fuzzy objects to avoid in his pursuit of hunting for comets. Little did he know that most of what he found were amongst some of the most amazing sights using modern day telescopes.

Globular clusters are contained within the Milky Way and represent some of the oldest objects that we can see and are many billions of years old. They are tight groupings of stars often made up of hundreds of thousand of suns and they make for spectacular sights especially in modest sized telescopes.

So, keep looking upwards and remember that the universe is for everyone to enjoy. It is vitally important we should make every effort to preserve the beauty of the night sky and keep light pollution to an absolute minimum.

*Jo and Pete Richardson FRAS*

## Bleadon Horticultural Society

On Saturday 9th March Bleadon hosted its 45th Annual Spring Show at the Coronation Hall.



Over 200 entries were received and despite storm Freda competitors managed to protect their cut flowers and bulb culture (silverware won by Pete Glover) to put on a lovely display of Spring colour and scent.

This was added to by intricate miniatures and spring colour floral exhibits (overall winner Yvonne White). Over 90 people came and enjoyed the displays along with a wide selection of beautifully made homemade cakes from the refreshments counter.

Further homecraft was on display, with Libby Lockyer gaining most points overall, Otty Pocklington took home the prize for best biscuits and Edward Bayntun received the silverware for the best Victoria sponge. Also on display were beautiful handicrafts and photography, where Chris Parkin-

son was awarded most points. The juniors were not to be outdone with Rosie taking home the cup for most points overall for those aged 6-11yrs and Nathaniel Whiffen for those aged 11-15yrs. Thank you to everyone who supported this vibrant village show.

Our next meeting is on Tuesday 18 June, when John Studley will give an illustrated talk on vegetable growing. John's allotment at Hinton St George is open to visitors on 15 June under the National Garden Scheme. We meet in the Coronation Hall at 7.30pm. All are welcome. The entrance fee is £2.

On Wednesday 17 July we are running a coach trip to the National Trust Dyffryn Gardens near Cardiff, visiting Chepstow Garden Centre on the way. We will leave Bleadon at 9.15am and aim to be back by 6pm. The cost is £16 for National Trust members or £26 for non-members. To reserve a place, please ring 07801 386477.

The 45<sup>th</sup> Annual Summer Show will be held in the Coronation Hall on Saturday 7 September. Show schedules detailing classes will be available from Bleadon Post Office Shop, the Queens and the church porch.

Future meeting dates:

15 October Beekeeping – Liz Scarisbrick  
19 November The history of the garden at Tyntesfield – Paul Evans, Head Gardener

Rose Benjamin and Libby Boucher

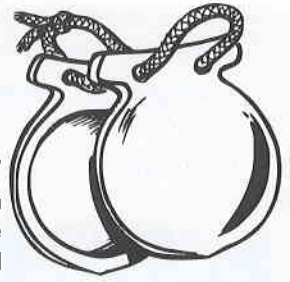
### Mark Howe Gardening Services

9 Malvern Road, Weston-Super-Mare  
Phone 01934 413594 or 07773272003

- REGULAR GRASS CUTTING
- HEDGES AND TREES CUT
- SHRUBS PRUNED
- FENCE PAINTING
- TURFING
- PATIOS AND CHIPPINGS LAID
- LAWN TREATMENTS
- DECKING ERECTED
- PATIOS AND PATHS PRESSURE WASHED
- FENCING ERECTED AND REPAIRED
- SHED ERECTION & REPAIR
- BLOCK PAVING REPAIRS



## BLEADON WI



We were delighted to mark our 10<sup>th</sup> year as a WI with a demonstration of 'Flamenco' dancing at our February meeting – a stunning display, beautifully accompanied by a guitarist. Celebrations continued with an evening dinner at the Thatched Cottage restaurant. As a change from wines, we explored the world of 'Beer', ably guided by the founder of Cheddar Ales – from IPAs to Porter, quite an interesting 'journey'. Maria and Steve Stannard, local producers of goat's cheeses, brought samples of their products to illustrate their talk at our April meeting. The Resolutions going forward at the NFWI Annual Meeting in Bourne-mouth in June were discussed in depth at our May meeting – 'Don't Fear the Smear' and 'A Call against the Decline in Local Bus Services' – both of which received an affirmative vote. May also saw many WI members supporting the May Day Fayre, with a good supply of produce for the cake stall. Our skittles team are also through to the Avon Federation tournament final and the 'Walking Netball' group are really getting into their stride!!

Elizabeth Lockyer

### Bleadon Café

Sitting outside the Café in Bleadon you could be at any celebrated holiday destination. The atmosphere is relaxed and friendly and there is plenty of room inside for all the non-sun worshipers.

We have a wide selection of cakes and sandwiches as well as salads and small meals to enjoy in our lovely village.

Don't forget our new telephone number 01934 814339



Bleadon in Bloom is well under way and there is a project plan available on the Parish Council web site. We are keen to involve the community and would like a Bleadon in Bloom leader in every street. If you feel you could help please let us know.

## In Bloom Judging is on the 8th of July

We are hoping to have a BBQ and give our judges a grand tour. The route is nearly finalised—please can you take responsibility for the area outside your house? That will be a great—Get in touch if you can help—all welcome and we are a friendly bunch—lots of us don't know anything about gardening! —07710098804 or 815540

## Bleadon Outdoor Festival Competitor Schedule

### Pot competition



1. Most interesting receptacle
2. Best Arrangement
3. Beautiful and Useful (could include edible plants and herbs)

#### Junior Section—Make a miniature garden

4. Up to 6 years old
5. 7—11 years old
6. 12—16 years old

### 7. Hanging Basket Competition



8. Blue Heart Competition
9. Children's colouring competition –  
"Get Rid of Plastic—Go Green"

Free to enter!!

All Entries to the Village Hall by 12.00 on the 9th of June

Judge's Decision is final

## NEIGHBOURHOOD PLAN

Once again thank you for your response to the survey you undertook in January with over 50% of responses from households.

You will very shortly be receiving the results of this survey since all your ticks, crosses and comments have now been assembled into a form in which you can see exactly how the whole village feels.

You will also be able to comment on these if you so wish and return to us. There are two or three areas of comment from you that we would like to address separately.

Firstly, several of you commented on the use of pink plastic in local fields. What you may not have realised is that the pink plastic was specially purchased to support research for breast cancer in women. I think you might also like to know that this year you could be seeing blue plastic as well as this will be purchased in support of research into prostate cancer in men. Secondly, a huge number of you commented on the lack of a decent bus service. Of reWhile we have taken notice of this concern and will lobby for improvements these we cannot guarantee since decisions will be those of North Somerset.

The same comment also goes for your concern over cycle routes. We will lobby but those decisions are not in our hands.

We hope you find the survey results interesting and we are now about to begin on the next stage of responding to your wishes.

Gill Williams



### PUBLIC NOTICE

**NORTH SOMERSET COUNCIL**  
**ROAD TRAFFIC REGULATION ACT 1984 - Section 14**  
**Final Notice of Temporary Traffic Regulation Order 2019**  
**Accommodation Road, Bleadon North Somerset**  
**Temporary Prohibition of Use by Vehicles Order 2019**  
**Date coming Into Force: 20th May 2019**

Notice is hereby given that North Somerset Council in pursuance of the provisions of section 14 of the Road Traffic Regulation Act 1984, as amended, have made an order the effect of which will be to close, temporarily, to vehicles the lengths of roads specified in the Schedule to this Notice.

Exemptions are included for emergency services, works access and as works permit for premises which may only be accessed via the closed section of road.

This order was required because of the ~~im~~road of danger to the public consequent upon work by Suro Telecoms to installation of power ducts on behalf of Western Power Distribution. This will become operative on the 20th May 2019 for a maximum period of eighteen months. However, the closures may not be implemented for the whole of the period but only as necessitated by the works which is anticipated to be of 18 days in duration. Appropriate traffic signs will be displayed when the measures are in force.

For further information relating to this notice go to [www.n-somerset.gov.uk/roadworks](http://www.n-somerset.gov.uk/roadworks)

### ALTERNATIVE ROUTES

Accommodation Road, Wharfedale, Lympham Road, Boat Lane, Briegwater Road, Rectory Way and vice versa

N P BRAIN  
Head of Legal and Democratic Services  
Town Hall  
Weston-super-Mare  
BS23 1UJ  
01934 888902  
Ref: T19 113

### SCHEDULE

**Accommodation Road** from where 132ky overhead cable crosses north of Lympham Concrete Plant for approximately 310 metres in a southerly direction.



# NEW FIAT 500 120<sup>TH</sup> GET UP TO 6 MONTHS OF APPLE MUSIC<sup>®^</sup>



APPLE MUSIC

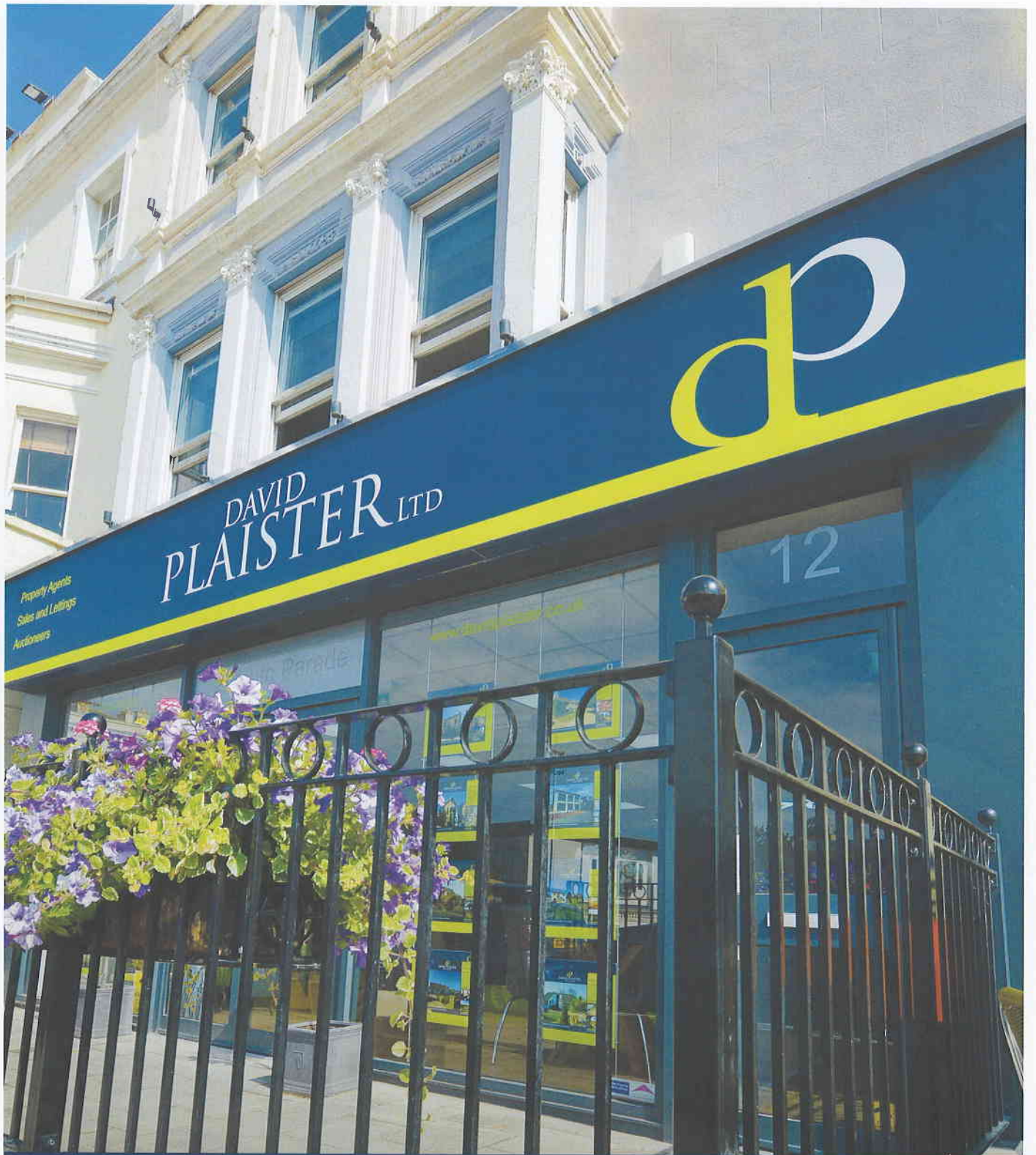
AVAILABLE WITH **0% APR**  
£500 FIAT DEPOSIT CONTRIBUTION\*



HUTTONS FIAT, BRIDGWATER ROAD,  
BLEADON, WESTON-SUPER-MARE BS24 0AW  
TEL: 01934 813700 HUTTONS-FIAT.CO.UK



Fuel consumption figures for the Fiat range in mpg (l/100km): Urban 31.7 (8.9) – 54.3 (5.2); Extra Urban 47.1 (6.0) – 74.3 (3.8); Combined 40.4 (7.0) – 64.2 (4.4). CO<sub>2</sub> emissions 117 – 160 g/km. Fuel consumption and CO<sub>2</sub> values are obtained for comparative purposes and may not be representative of real-life driving conditions. Factors such as driving style, optional wheels, weather and road conditions may also have a significant effect on fuel consumption. CO<sub>2</sub> and fuel consumption values are determined on the basis of the measurement/correlation method referring to the NEDC cycle as per Regulation (EU) 2017/1153. <sup>^</sup>Valid until 31/12/19. T&Cs apply. New Apple Music customers only. Existing Apple Music customers receive 3 months. \*Offer available on Fiat 500 & 500X 120th range, 37 month term. Minimum 22% customer deposit. Models shown have options which will increase customer deposit. Fiat Deposit Contribution varies across the range. Optional final payment varies depending on version, 6,000 miles p.a. PCP sales only until 30/06/19. Subject to status. T&Cs apply. Participating retailers only. Fiat Financial Services, SL1 0RW. FCA AUTOMOTIVE SERVICES



DAVID PLAISTER

PROPERTY AGENTS | SALES & LETTINGS | AUCTIONEERS

01934 815053

[www.davidplaister.co.uk](http://www.davidplaister.co.uk)