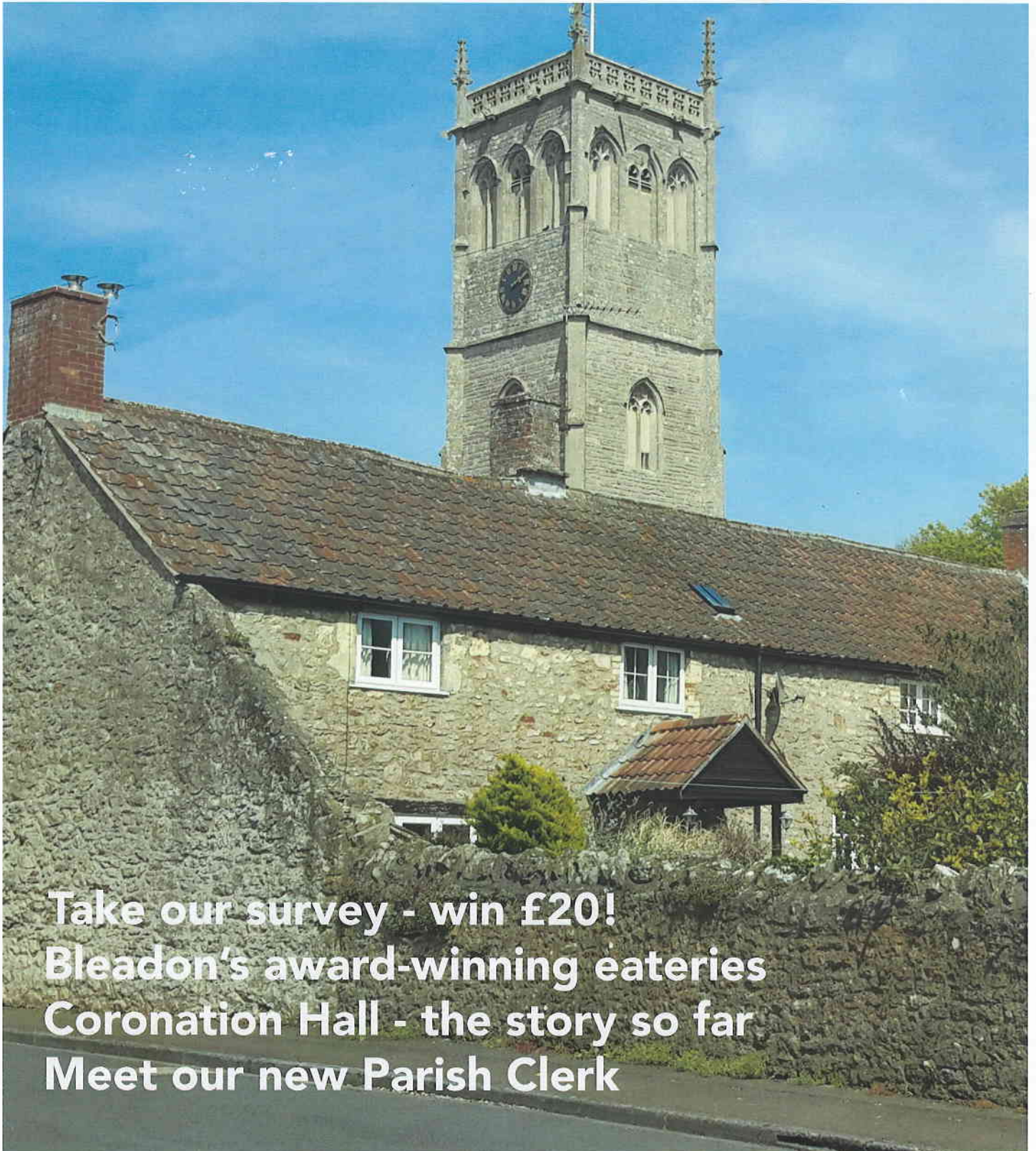


Bleadon News

AUTUMN 2016

ISSUE 104

bleadonparishcouncil.co.uk



Take our survey - win £20!
Bleadon's award-winning eateries
Coronation Hall - the story so far
Meet our new Parish Clerk

Bleadon Players in Coronation Hall murder shocker

At the end of September, The Bleadon Players present "At The Sign of the Crippled Harlequin" by Norman Robbins.

A case of mistaken identity leads to tragedy in this enthralling thriller.

In a snowbound guest house in the Peak District, Marjory Pike is wrongly identified by another guest as the author of a book debunking certain mediums, one of whom had committed suicide as a result.

The son of the deceased medium is staying at the guest house, so when he arrives in the lounge bloodied and bruised, and Marjory is found dead, the finger of suspicion naturally points at him.

But the guest house may be haunted, other guests have their own secrets, and even the proprietors are not above suspicion... In true Norman Robbins fashion the deepening mystery is rich with shocks and laughs as the play moves to its unexpected close

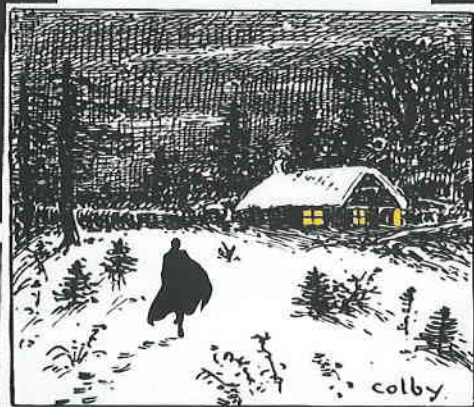
The show is on 29/30 September and 1st October and tickets, priced at £7, are available from Bleadon Farm Shop, or on the door.

THE BLEADON PLAYERS

Proudly Present

AT THE SIGN OF THE CRIPPLED HARLEQUIN

By Norman Robbins



CORONATION HALL, BLEADON

September 29th, 30th, October 1st, 7:30pm

Tickets £7:00 from Bleadon Post Office or on the door





Bleadon News is published by Bleadon Parish Council. We will consider any articles for publication, so long as they are about Bleadon, or can directly benefit its residents.

Unless otherwise stated the opinions and comments expressed in this publication, are those of the editor or contributor, and may not be those of Bleadon Parish Council.

POPPY COLLECTION 2016

This year's Poppy Appeal house-to-house collection starts on 29 October, with poppies and other items also on sale at the usual local venues. Bleadon's support for this eminently worth-while charity has been excellent for the last few years, and as this will be my last as local organiser I hope it will continue this year. In the meantime there are poppy-related items on sale at Escape in the weeks leading up to the poppy fortnight.

Les Masters



Welcome to the 104th Edition of the Bleadon News from the Chair of the Parish Council

What a great summer it's been for Bleadon! Not only do we have a smart new entrance and facilities at the Coronation Hall, but we have enjoyed events like the Queen's birthday celebration and our first village dog show. Our colourful planters continue to bloom thanks to our dedicated volunteers, and Bleadon WI even treated us to a display of bra-skets, which became a bit of an Internet sensation!

The summer has also been a busy time for the Parish Council. Most importantly we have appointed a new Parish Clerk, Tony Jay, who shares our enthusiasm for all things Bleadon. As a body, the Council is dedicated to making sure that Bleadon remains a great place to live. Our focus is on taking action and encouraging involvement wherever possible, rather than focusing on process (although, of course, we still have to do a fair amount of that!).

On that note, please do make an effort to complete the survey that is included in this edition. We're keen to make sure that we communicate with you in the best and most efficient way, and your responses will help us to do that.

Did you know that in Bleadon you can pick up the best pub food and the best breakfast in the Weston area? Congratulations to The Queens Arms and The Bleadon Farm Shop and Cafe, which both picked up top awards at the recent Weston Food Festival.

Do look out for more information on these topics and much more throughout this edition of Bleadon News.

Claire Gutsell



BLEADON PEOPLE

The Queen's Arms is a central part of village life in Bleadon. The pub has just won the 'best pub food in Weston' award for the second year running, so it seemed like a good time to quiz pub managers Nick Warrener and Emma Coleman about all things Queens.

Nick: This is the second year in a row we've won the 'best pub food' award. The best bit is that we won both the public vote and the judges vote, so it's people who have actually eaten here who have taken the time to vote for us.

What do you see as your biggest successes since taking over at the Queens?

Nick: Our harvest supper was a huge success. We involved the church, set up a marquee outside and everybody had a great time. This weekend is our second harvest supper and everybody's lent a hand.

Emma: I think our biggest success was our Christmas panto. It's not just popular with villagers – people came from all over, including my aunty from Wiltshire. Everybody got involved for free, and as well as the panto we had a Christmas jumper competition, Christmas music and loads more. We managed to raise £1,600 for the Youth Club during the evening, so it really felt like we were giving something back to the community as well.

What events can we expect over the coming months?

Emma: We love running special events and are always on the lookout for new ideas. On November 17th, we're holding our second Beaujolais Nouveau



celebration with a three course French peasant meal and, of course, plenty of wine. We'll be holding all our usual Christmas events, including the panto – and we're hoping to do something special for New Year's Eve.

Nick: Our food nights go down really well, so we'll be looking to put on more of those. We also love doing our curry and quiz nights, but our quizmaster had to stand down, so we're looking for somebody to take over so that we can restart those.

What next for the Queens – future plans?

Nick: Food is really important to us, so we'll be trying to build on our current success and the interest that our award has created. In particular, we're going to develop our lunchtime service with some special offers.

Finally, what would you say is the best thing about Bleadon?

Emma: It's definitely the community. Bleadon is a good place to live with a great quality of life, and that's really down to the people. People here support businesses and groups in our community. The Queens is a bit of a hub, so we get a lot of groups meeting here – from golf clubs to investment clubs, everything!

Nick: The Queens is my third village pub and Bleadon is by far the most community-focused village of them all. People just support each other. When we had the opportunity to take over the pub we just had to do it because we love Bleadon.



Hi Nick and Emma. Congratulations on the new award, but before we get on to that please could you tell us a bit about yourselves?

Emma: We took over the Queens almost exactly a year ago. Nick had already managed the Queens for Butcombe for five years and I worked here part time. The pub has played a huge part in our lives, as we wouldn't have met if it hadn't have been for the Queens. I was working here part time while I studied for a Masters in Garden Design and Nick was my boss.

What made you want to take over The Queens in particular?

Nick: Running a pub isn't just a job, it's a complete lifestyle. Bleadon had already been my home for five years and I love the village and the sense of community we have here. It's the perfect location! Most people in the village can easily walk here, so we're very accessible. From Easter to October we get a lot of tourists coming through, especially walkers – they can't miss pub as it's smack bang in the middle of the village and they invariably pop in for some refreshment.

What does winning 'best pub food in Weston' two years in a row mean to you and your team?

Emma: Nick worked for Butcombe as a chef before becoming a pub manager, so food is a huge part of his life. Getting the quality right, sourcing the best ingredients and creating interesting dishes is at the heart of what we do, so this award means a lot to us.

BLEADON PEOPLE

Meet our new Clerk, Tony Jay, in an interview with our Editor



What's the best part of the job?

One of the most rewarding parts of the role is helping people with their problems. The range of issues that I can help with is endless, but includes reports of potholes and fly tipping and helping with planning queries. If you have a problem or a question then please give me a call on 07741461982 or email me on parishclerk@wembdonparishcouncil.gov.uk and I will do my best to help you.

COUNCILLOR VACANCIES

There are currently two Parish Councillor vacancies. If you are interested in joining the Council then feel free to contact Tony and he can let you know what is involved. We look forward to hearing from you.

Welcome to Bleadon, Tony. Can you introduce yourself to our readers?

I'm Tony Jay, the Bleadon Parish Council Clerk and Responsible Finance Officer. I have been a Parish Clerk for three years, having started at Banwell and now I am now Clerking for Wembdon and Wraxall & Failand as well as Bleadon.

And what is your role in our village?

I work with the Parish Councillors as a team, with the shared aim of improving the quality of life of everyone who lives in Bleadon. Effectively, that means supporting the Council in carrying out its duties, in particular making sure that it acts according to the law, and within its powers. I deal with all accounting and financial matters, including preparing the annual budget and the precept demand. I write the agendas for Parish Council meetings, and take the minutes. Finally, I deal with all correspondence to the Council, and manage the Council's website.

That's quite a wide range of responsibilities – I guess that you need a fair amount of specialist knowledge?

Being a Clerk means keeping on top of a lot of detail. I have achieved my Clerking qualifications, but that is not to say that I am not still learning! I have to keep up to date with changes to the law and procedures as well, which involves a lot of reading.

What did you do before becoming a Parish Clerk?

Before I became a Clerk, I worked as a Police Officer in Gloucestershire, ending my career as a Detective Sergeant on the Fraud Squad. I enjoyed my time in the Police, especially when I was involved in major enquiries – one of which involved supervising the recovery of the bodies of the unfortunate victims of Fred and Rosemary West in the Cromwell Street enquiry.

Later, I was seconded to London to work on the 7/7 bombing enquiry. I now give talks to groups and clubs about my experiences during these enquiries, so if anyone would like me to give them a presentation then please ask - I don't make a charge!

When I retired from the Police I was appointed as housing benefit fraud manager, covering three District Councils in Worcestershire. My highest profile case was when I investigated the 1960s pop star P.J. Proby for benefit fraud. This resulted in a Crown Court trial, but he was acquitted on a technicality.

Last but not least, how do you relax when you're not working?

My interests include keeping fit, going to rock music concerts, playing the keyboard badly and supporting Bristol City FC. I have a son and grandson who live just outside Oslo in Norway and I enjoy visiting them whenever I can, although everything is very expensive there.

Every June I take a week's holiday and work as the eviction manager at the Glastonbury Festival. This is great fun, although a lot of work. I work from 7am to 7pm each day, but then I am free to enjoy the festival and drink some cider!



Out and about in Bleadon with our Village Ranger, Ian Findlay

The new troughs have now been installed on Well Green and look very good and in keeping with the village. They replace the staddle stones that were stolen last year. The troughs will protect the grass verge, and as they are very heavy and bonded to the ground they will hopefully be more difficult to pinch.

We still have problems with fly tippers especially on Accommodation Road and the Roman Road laybys. If you see any suspicious activity please report it to North Somerset Council or the Police.

Litter picking is a thankless task and it can look as if it hasn't been done within hours of the roads being cleaned!

Again, please report anyone dropping litter particularly fast food wrappings and plastic bottles.

Much of the litter I pick up is actually recyclable so please can I encourage everybody (including the whisky drinker who puts his or her empties on the verge outside the Croquet Club) to please recycle wherever possible.

I am looking forward to receiving assistance from the Community Action Team in clearing various footpaths and behind the Youth Club. Thank you to Dave Chinn for organising this.

The cover of the defibrillator is cracked and opaque, but rest assured the defibrillator is available and working - we await a new cover.

Bleadon Rights of Way

There are some beautiful walks within the Parish such as Roman Road, Hellenge Hill, South Hill and along the River Axe, but unfortunately the BROW group has not been very active this year due to illness and injury.

Fortunately, the footpaths that run through our village are well used by many walkers and the volume of activity has kept them relatively clear.

The equipment is still available and anyone wishing to offer their services can speak to me or email me at ian.findlay@talktalk.net.



Mark Howe

Gardening Services

9 Malvern Road, Weston-Super-Mare

Phone 01934 413594 or 07773272003

- REGULAR GRASS CUTTING
- HEDGES AND TREES CUT
- SHRUBS PRUNED
- FENCE PAINTING
- TURFING
- PATIOS AND CHIPPINGS LAID
- LAWN TREATMENTS
- DECKING ERRECTED
- PATIOS AND PATHS PRESSURE WASHED
- FENCING ERRECTED AND REPAIRED
- SHED ERECTION & REPAIR
- BLOCK PAVING REPAIRS

Horticultural Society



Our summer show saw the the Coronation Hall filled from wall to wall with over 300 magnificent exhibits ranging from Pelargoniums to potatoes and pictures of Peppa Pig.

Steve Hartree won two trophies, including the Vaux Cup for his lovely vase of dahlias as the most outstanding exhibit in the Show. He was also presented with the RHS Banksian medal as the most successful exhibitor in the horticultural classes.

Ted Gill was presented with three trophies as was Amanda Du Rose. Libby Lockyer's floral exhibit of New York as a holiday destination enabled her to win the Edna Murphy plate. She also won the Chairman's Cup for the most points in the Homecraft section.

Antoinette Welch won the Wiltshire Cup as her Impatiens was judged to be the best pot plant in the whole show.

Jan Marshman and Penny Skelley shared the Society Cup as they had the same points in the floral exhibits classes.

In the junior section Rosie Presburg, Simeon Whiffen, Jacob Eade and Jemima Whiffen won the trophies in their respective age groups. William Falongo won the Year of the Child Cup for the best entry in the children's classes.

Next Meeting.

On Tuesday 18 October, Graham Nicholls will be giving an illustrated talk on Penstemons in the wild and in cultivation. This is at 7.30pm and is open to anyone at £1.00 admission.

Chris Cudlipp

Bleadon is blooming - thanks to community plant-up



Bleadon enjoyed a colourful summer thanks to the hard work of a band of local volunteers and the generosity of North Somerset Council. May's Bleadon Community Plant-Up, organised by the Parish Council, saw 1,600 plants planted in 30 tubs by 12 volunteers. As well as planting up the tubs, volunteers also pulled out a dead hedge and tidied a number of neglected beds. The plant-up is an annual event designed to make our village look attractive throughout the summer. If you would like to be involved next year, or could help with weeding or watering the tubs this year, please contact Councillor Clarke.



Bleadon Parish Council Communication Survey

Tell us how you would like the Parish Council to communicate with you – and you could win £20!

Good communication is central to your Parish Council’s approach. We want to make sure that you are up to date with all the latest Council and village news, and that you can find it easily and in the format you want. But that’s not a one way street – we’re keen to hear about your news, your concerns and any issues you would like the Council to address.

Our ten-question survey (**included with this edition**) is designed to help us communicate with you in the best possible way. We will use the results to draw up a new village communication plan that will be put into action over the course of the winter.

To make the survey a bit more exciting, a £20 shopping voucher to use at a store of your choice will be given to one lucky respondent!



Dog Show

Wagging tails were out in force at Bleadon’s very first dog show, which took place on 29th May 2016. The show attracted humans and their four legged friends from across the village and beyond.

As you can see from the pictures, a great time was had by all – and as a bonus the show raised over £320.00 for the Friends of the Church.



Whitehouse

Kennels & Cattery, Somerset

Whitehouse Kennels & Cattery are a family run pet boarding home. Having been in the animal care business for over 25 years we know the importance of your family friend and will provide a truly caring service.

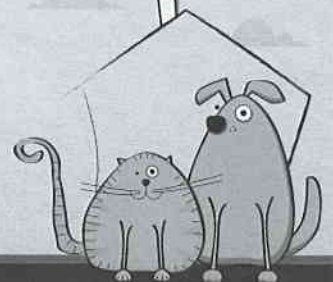
Whether you are looking for pet boarding, relocating abroad, dog grooming, or buying a bed for your cat, Whitehouse Kennels & Cattery is the place for you!

Services include:

-  Pet Boarding
-  Day Boarding
-  Pet Export & Travel
-  Pet Shop
-  Cuddle Buddies
-  Collection & Delivery Service
-  Grooming Service
-  Wedding Doggie Services



Find us on Facebook



OPEN EVERY DAY
10am - 1pm & 2pm - 6pm

For more information & prices contact us on:

T: 01934 750352 **E:** enquiries@p-e-t-s.co.uk or visit www.whitehouse-kennels.co.uk
Whitehouse Kennels & Cattery, North Rd, Eastertown, Lympsham, Somerset BS24 0HS

Bleadon Baby and Toddler Group

Due to the hall refurbishment, Bleadon Baby and Toddlers spent some of the summer term getting out and about in our local area. We started with a teddy bears picnic in the Bleadon play area, then ventured to Brean Play area. We also visited some of our local attractions such as Puxton Park and Weston Splash Park at Knightstone - and we also made good use of our local parks and the beach to get the toddlers paddling!



The weather was kind to us and we only had to cancel one meeting over the summer term. We tried to ensure we chose a mixture of paid and free locations to suit everyone's budget.

We hold a session in the Coronation Hall between 9.30-11.30 every Wednesday during term time and all babies and toddlers are welcome to enjoy crafts and refreshments.



Contact: Libby Boucher 07966563495

Queens 90th Birthday



Bleadon's celebration of the Queen's 90th birthday offered something for everybody, with a mass picnic, a Great Bleadon Bake Off, a soft toy competition and much, much more.

The organisers deserve a huge vote of thanks from the village, especially as all the hard work was done by a small band of volunteers.



REBECCA MILLER
YOGA

BLEADON YOUTH CENTRE

Monday 9:30am to 10:45am

Tuesday 6:30pm to 7:45pm

07827711950

rebeccalouisemiller@hotmail.com

BRIDGE GARAGE

Bridge Road, Bleadon, BS24 0AU. 01934 812206 enquires@bridgegarage.com

Car sales
Servicing and MOT
Computer diagnostics
Air conditioning
repairs
Attended filling
station

WORKING HARD TO KEEP YOUR CAR ON THE ROAD



BLEADON CORONATION HALL AND JUBILEE ROOMS GET A FACELIFT

THE STORY SO FAR
BY
LES MASTERS

The Coronation Hall belongs to the village of Bleadon, having done so since 1937, the year of George VI's coronation. It formerly belonged to the Church, being called the Parish Hall, and was given to the Parish Council, which set up a Management Committee to run it, starting in early 1938. In the ensuing seventy-eight years many changes have taken place, culminating in the vastly improved and extended facility which we have today.

In the 1950s some of our far-sighted predecessors organised the acquisition of the car park, for which we must be eternally grateful. In the early 80s the original entrance from Coronation Road was closed, being replaced by the entrance from the car park, a much safer and more sensible arrangement, while inside the hall the stage was moved from the opposite end to its present position. A much more drastic change followed in the 1990s with the building of what was subsequently named the Jubilee Room, initially meant to provide a base for the scouting organisations, with lettings available when they were not using it. This almost doubled the size of the building, resulting in more lettings, bringing in more money for improvements.

This accentuated a trend that started in 1988 with the foundation of Bleadon Players, followed soon after by the bridge club and the short mat bowls club, all very good business for the hall. The then Management Committee showed a very positive, enlightened approach to encourage new organisations and help them get off the ground. They allowed the players a great deal of leeway with hire fees until it was clear the group was viable, and they enabled the bowls club to start by buying the first equipment. In both cases it was a good investment.



At the beginning of the present century the hall was running at a steady but unspectacular profit, to the extent that at the end of 2002 we were able to spend £12,000 replacing the old corrugated iron roof and the adjoining felt roofs, work carried out within budget and ahead of schedule by local contractor Mike Holyday. In 2003, however, there came a quantum leap in the hall's income when our monthly village markets began. We soon fitted out the main kitchen with worktops, wall cupboards and floor units, enabling several organisations to have their own cupboard. We replaced the second-hand carpet tiles in the Jubilee Room with the present vinyl floor, dramatically transforming its appearance. We bought new tables throughout, both large and small, and 150 upholstered chairs for the main hall. The main kitchen has a commercial washing-up machine and there is an electrically operated screen on the stage. We have a sound system complete with microphone and CD player. All this means hirers get better value for their money.

Bleadon Coronation Halls

There is always something going on in the two halls with lots of groups, clubs and activities. The halls are also a popular venue for family celebrations, especially with the new improved entrance hall and toilets.

If you want a bar the Management Committee can run it for you.

Contact the booking officer Jo Jones on 01934 812370 to book your event.

A special thank you to Andy Harper of Somerset Bespoke.

Andy completed this wonderful project on time and with great care. Andy donated over £2,900 worth of materials to ensure the finished look is clean and modern.

Andy can be contacted on
01934 814962

andy@somersetbespoke.co.uk

The markets grew into a much appreciated social event as well as a money-spinner, but at the same time they highlighted some problems. Hindsight we all know to be a wonderful thing, so it is not a criticism of the committee twenty years ago to remember that the passageway connecting the halls was ridiculously narrow and that disabled access to the Jubilee Room was far from satisfactory. Given the lack of money it was a miracle the extension was built at all, and nobody foresaw the demise of three of the four scouting organisations or the halls being used jointly, as with the market and the May Day Fayre.

In due course the committee began the process of working out alterations to eliminate these problems, determined that this would be done carefully and to a high standard even though the cost would be high. Funds were steadily accumulating, and local architect Dave Finch was commissioned to prepare drawings. These were presented to the committee and discussed with Dave, who then revised them until a final version was approved. The Parish Council (they own the building, remember) were kept fully informed, and as there was some external alteration planning consent was needed, which was obtained in the name of the council. Then came the task of obtaining quotations, hoping all the time they would be within our means.



Five local contractors were invited to tender, three did so, and the contract was given to Somerset Bespoke, aka Andy Harper.

Further planning was needed to decide when best to carry out the work with minimum disruption to hall users and as most people know the work began in June and ended in August so that we could hold a re-opening celebration on 13 August, the event being spread across the two halls to showcase the scope of the new layout. The contract for the work was with the Parish Council, with the Management Committee transferring to the council over £60,000 from the funds we had built up. It has been a long haul, but very worthwhile.

There has been one drawback, leading to a problem unresolved at the time of writing. To mark the Millennium, John and Lorna Hickley designed and painted a unique mural covering the whole of the entrance hall, showing pretty well the whole village, house by house. The alterations meant this could not be preserved. On behalf of the committee Scott Morris took detailed professional standard photographs of the mural, with a view to examining how we might reproduce and display it in keeping with the new interior. Now that the work is complete we can address the matter, hoping that there is a solution that will satisfy all concerned.



HALL EVENT

The Worlewind Band will be performing in the Coronation Hall on Saturday 15 October at 7.30. This promises to be a very enjoyable evening, with this highly regarded band playing well known music ranging from, standard swing tunes, stage and screen and popular hits from the 20th century.

Tickets are available from Bleadon Farm Shop, price £5, to include a light buffet. There will be a bar and all proceeds will go to hall funds.

St Peter and St Paul Church News

22 November 2016: a day of celebrating partnership!

Plans for a day of celebration are growing out of the recent confirmation of a long-term partnership between Bleadon Church and St Andrew's Church, Bournville.

This partnership has been growing for some years and finally the legal process to bring the two parishes together is complete. It is as if we have been engaged and now we have got married! And so it is time for a party!

Mostly, when people first hear of this partnership it is striking because it is an unexpected combination of communities, but this is its joy! This partnership has the potential to be a beacon of encouragement as people in both churches and communities walk together and discover more and more of the unexpected fullness of life that partnership can bring.

The linkup between the two churches has sparked off all sorts of conversations amongst churchgoers and others who see inspiration and value in doing things together and inspiring and supporting each other. This linkup is growing organically into a partnership between two whole communities, not just two churches!

November 22 is the public launch day for this new partnership. Detailed plans are still forming as different groups and individuals get involved but in outline the plan is:



Daytime Celebrations:

9.30am to 4pm – a programme of activities in both communities designed so people can join in for a short time or all day. These will include a treasure hunt around both communities and a quiz about both communities, supported with free bus transport to help every one join in and spend time together. Hopefully we will also have communal daffodil planting, community music making, and more – all aimed at involving as many people as we can who live in or have an active connection with either community.

Evening Celebrations:

6pm to 9.30pm - starting with a simple church service at Bournville, followed by the first course of our supper, then moving to Bleadon for our puddings and a simple service to draw the evening to a close. The evening will be ticketed so catering can be planned, and the Bishop of Bath and Wells will be joining us.

Please do join in. This partnership has the potential to be an adventure through which we will all grow. More details will be publicised on the church website (www.bleadonchurch.co.uk) and in other locations as soon as they are available.

If you have ideas about extra activities etc. please contact me, I would love to hear from you.

With lots of hope for our future together.

Comfort and hope in the face of bereavement.

Times of loss are always challenging and sometimes very, very difficult. Often there is no quick fix and time is needed to come to terms with what has happened and find a new way of living now.

On Sunday 4 November at 6.30pm, Bleadon Church will be holding its annual All Souls Service – an opportunity for all who would like to gather together, remember loved ones and encourage and support each other as we take hold of the hope and comfort we can find in God and each other.

We will contact individually as many relations of those who have [recently?] died as we know of but welcome anyone who would like to come. During the service names of those we have been asked to remember will be read out. If you would like us to remember your loved ones in this way please add their names to the list that will be in church from 1 October, or contact me with the names; it would be a privilege to include them.

If you are living through a time of loss at present and would like me to visit or explore other help and support, please do contact me. I and the church are here to support all our community, not just families who have had funerals here.

With much hope when times are hard,

Tim

Rev'd Tim Erridge, Parish Priest for Bleadon and Bournville,

Tel: 01934 815 404

Email: revtimerridge@gmail.com

Churchyard Walls

If you have walked through our churchyard in the last few weeks, you will have undoubtedly noticed the repair work being carried out on the walls.

Given the size of the churchyard and the age of the walls it's not surprising that maintenance work is required occasionally. I think it's fair to say, however, that the present repair work is by far the most extensive that the Parish Council has had to undertake. It may well be a bit of a surprise to discover that the Parish Council has responsibility for the upkeep of a churchyard, and the reason for this is that our village churchyard is classed as 'Closed'.

When a Church of England parish churchyard becomes full with 'no proper room for new graves', responsibility for maintenance may at the request of the Parochial Church Council be transferred to the relevant local authority. Once this request is made, the transfer is compulsory.

The Parochial Church Council of St Peter and St Paul made such a request to the Parish Council in January 1982. In the following three months the Council could have asked the District Council to assume responsibility - but this wasn't done and so the churchyard remains the Council's responsibility, making 'us' - the villagers - responsible for aspects of its care.

Just over a year ago the PCC informed us that an area of one of the walls was looking decidedly unsafe and expressed their concern that it could topple over. Quentin Alder, the Church architect, was contacted and after inspecting all the walls he advised us that he had identified not one but four areas in need of repair. He then drew up a detailed specification of the work required, which we then used to obtain four quotations. After careful consideration we approached a company called Atwills to carry out the work.

Of course all of this took some considerable time, so we were pleased when at last we had a start date to look forward to and then disaster struck. A large area of one of the walls - that had not even been highlighted as in need of repair - collapsed.

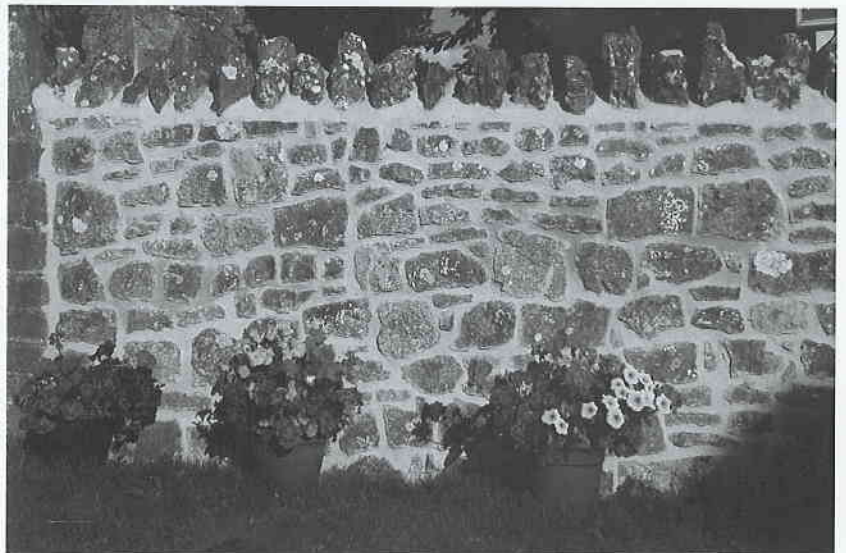
This presented us with a completely different problem - rebuilding rather than repair - that had not been included in any discussions or quotations and most importantly had not been budgeted for.

We decided to go ahead with the agreed repair work and so for several weeks the contractors have been busy working on the repairs. It's lovely to be able to report that all the comments we have received about the quality of work and the friendliness of the workmen can be described as 'glowing'.

The rebuilding of the 'collapsed' wall is presently under discussion and we will certainly keep you informed as and when upward rather than downward movement is imminent.

We have been advised by all the professionals involved, that old walls are often damaged by invasive vegetation, water seepage, frost and a whole range of factors. This means that, as in this case, old walls can and do collapse without any outward sign that this could happen.

Over the years many sections of the walls have undergone repair, so once the collapsed wall is rebuilt it will mean the majority of the churchyard walls have been 'cared' for in one way or another. The long-term maintenance and care of our churchyard is important, not only because of its personal significance to many villagers, but also because it is a quiet and green oasis in the middle of our village. With the walls repaired and grounds cared for, we should be able to look forward to many years more enjoyment of this sacred and special place.



I.D. Clarke
Vice Chair
Bleadon Parish Council

Your help is needed to keep our village special!

Please attend the Bleadon Hill Planning Enquiry in November and help to stop 79 houses connecting our village to Weston

A Planning Enquiry into the application to build 79 houses on Bleadon Hill, will take place in the Town Hall in Weston Super Mare over four days between 29th November and 2nd December 2016. It's vital that as many villagers as possible attend the Enquiry to demonstrate the huge level of local opposition that exists to this development. By attending, you will also give moral support to The Wentwood Drive and Bleadon Hill Action Group, whose spokesperson will be making the case against the development at the Enquiry.

Please try to attend on as many days as possible - strong community support against the application could have a massive impact on the outcome.

The opposition case will be based on

- Transport issues
- Highways and access
- Visual impact and landscape issues
- Sustainability
- Area of Outstanding Natural Beauty impact
- Mismatch with North Somerset Council's Core Strategy

North Somerset Council will also be represented at the Enquiry and will also be objecting to the application.

Further updates will be made at the next Parish Council Meeting on 10th October 2016 starting at 7.30 pm



How big is Bleadon?

When a Planning Application comes in, or when the Parish Council is trying to work out if something is within its jurisdiction, we use the map printed on the inside back cover of this edition. I find this map fascinating and I'm always finding new points of interest, whether to do with the size of the parish and its boundaries, or what falls within them. Why not take a look at the map and spot something about Bleadon you didn't know!

Claire Gutsell

Bleadon Youth Club

The club opens its bright yellow doors to youngsters aged 10 to 17 each Thursday evening from 7pm through to 9pm. The drop-in sessions are run on our behalf by the YMCA, so you can be sure that your youngsters are in the best of hands. All members need to register and have the written consent of their parents/carers. There's no registration fee and the registration process is a simple form. Each session costs just £1.50 to be paid on the door.

The youngsters make the most of the club by chilling out with friends in a safe and welcoming environment. There's pool, table tennis and table soccer, plus regular organised activities like badminton, dodge ball and soccer in the park. The tuck shop is always popular, there's free WiFi for socialites even and a small kitchen for foodies.

Farewell to India

Sadly, we are losing our YMCA leader India to the bright lights of London at the end of September. Her endless enthusiasm and energy have been a very welcome asset to the club for the past couple of years. We are sorry to see her go, but are sure that her co-worker Michelle will carry on in Bleadon with equal enthusiasm and understanding of our youngsters' needs.

Mayday Fayre success

We raised over £1900 for the club at the May Day Fayre earlier this year. Thanks to the hardy band of volunteers who made it such a wonderful day despite the weather.

NEW: fitness activities for all

Fitness and wellbeing activities for the young at heart now include fitness classes from 9-10am every Tuesday and Thursday morning. Call in and talk to Rane about how to get involved. The regular Monday morning Rebecca Miller Yoga classes have now been extended to include Tuesday evenings from 6:30 -7:45pm. Call in and talk to Becky to find out more.

Want to get involved?

We will be holding our Annual General Meeting on Thursday 29 September at 7pm. It will be short and sweet, but it is the opportunity for community-minded adults to get involved with the committee of volunteers that maintains the Bleadon Youth Club. Go on - join in the fun.

Keith Pyke, Treasurer and Booking Officer.

Call me on 813127 if you want to book the Youth Centre for a party or other activity.

Bleadon Belles sing and bake to raise funds for the Diamond Jubilee Scanner Appeal

At their May concert with the Worle Wind Band, the Bleadon Belles with the help of their supporters baked cakes and provided refreshments for the audience. A generous donation was also received in recognition of their musical efforts. Together with the proceeds of the concert and even more money raised at Bleadon's Queen's Birthday celebrations, the Belles were able to present a cheque for £1,400 to the Scanner Appeal at their WI Meeting in Bleadon.

Bleadon Belle, Liz Butt presented the cheque to Margaret Brees who represented the League of Friends of Weston General Hospital. Mrs Brees thanked the choir for their contribution, which will be added to the £70,400 already raised towards the scanner which will cost up to £400,000.

During the summer break the Belles had two great workshops with the talented Charlotte House, ably assisted by pianist Liz Rankin. The workshops helped the Belles build up their repertoire and push their musical boundaries and were great fun. The choir starts rehearsals again next week, with a full programme of bookings up to Christmas and into the New Year.



Jo Jones

Bleadon Village Market

Bleadon Village Market made a welcome return on 17 September after a three month break. Villagers and visitors were treated to a wealth of interesting stalls from stallholders old and new. As usual, there were delicious treats to buy, alongside interesting crafts, jewellery, books, collectables and much more. The kitchen opened at 9am selling bacon baps, sausages (from Old Spot happy pigs), toasties and, perhaps most importantly, cups of tea. The return of the market was welcomed by all – both browsers and those who regularly use it as a venue for meeting friends.

OCTOBER

15TH

NOVEMBER

19TH

DECEMBER

3RD



Bleadon Parish Church's Harvest Lunch

2 course lunch plus Cider

**Entertainment (songs of praise) plus
raffle**

Sunday 9th October

12:30 for 1pm

Coronation Hall

Tickets £12.50

**From the Post Office, Members of
Friends or Gill Williams -813255**



Bleadon Village Neighbourhood Watch (NHW) is run by volunteer residents for the benefit of their community. Thanks to the efforts of all those involved over the years Bleadon has widespread NHW coverage.

If you are a Bleadon resident you can volunteer to represent your street and potentially become a Neighbourhood Watch coordinator or support an existing one. You will receive messages directly from the police which you can subsequently pass onto your neighbours in a variety of formats whether by word of mouth, paper or electronically. If you would like to get involved just email Lindsey Stone, Watch Scheme Administrator, Bridgwater Police Centre at lindsey.stone@avonand-somerset.police.uk or ring her on 01278 644 799.

To ensure as wide communication as possible Neighbourhood Watch information, leaflets and general messages relating to Bleadon and surrounding villages, continue to be posted on the Bleadon BOB community website and are included in the community news page www.bleadon.org.uk/news. Additional information can, as always, be requested and discussed via your local NHW representative.



Jo Gower-Crane - Local NHW Coordinator

Don't forget to fill in our survey inside this issue of the Bleadon News
Completed forms can be posted into the survey boxes in the Post Office or the Queens Arms. Alternatively you could hand it to a Councillor.

Bleadon Café
at Bleadon Farm Shop and Café
Purn Way, Bleadon, North Somerset BS24 0QE
01934 815584

Wi Fi

facebook.

*Bleadon Café are both grateful and proud to accept the food festival award for **'Best Breakfast'***
Home baked cakes, freshly cooked lunches & hand roasted coffee and speciality teas'
Function room for all types of events
Lovely country setting with views of croquet court
Farm shop attached with local produce

Turn left into Bleadon at Fiat garage on Bridgwater Road A37

Bleadon Parish Council meets on the second Monday in the month.

The next meeting will be on Monday 10th October 2016 at 7.30 pm.

Please check on www.bleadonparishcouncil.co.uk for meeting dates, agendas and minutes.

Agendas can also be seen on the five village notice boards.

We welcome parishioners to attend meetings. At the start of each meeting you are able to talk briefly to the council about any issues you have.

If there is a particular issue you would like to raise please let the Parish Clerk know by the Friday before the meeting. This will give us the chance to collect the most up-to-date information. If it's a last minute issue you wish to raise, you can still ask to address the council but they may not have the answers immediately.



To contact the Parish Council please email: parishclerk@bleadonparishcouncil.gov.uk



A note from your Editor Mike Gutsell

Thank you to all the people without whom Bleadon News wouldn't exist - our contributors, distributors, advertisers and our printer. We have a packed issue this time, and it's been interesting editing all the contributions. Please let us know what you think about the new Bleadon People Interviews - if they prove popular we'll include more in future (and do let us know if you have any recommendations for future interviewees!).

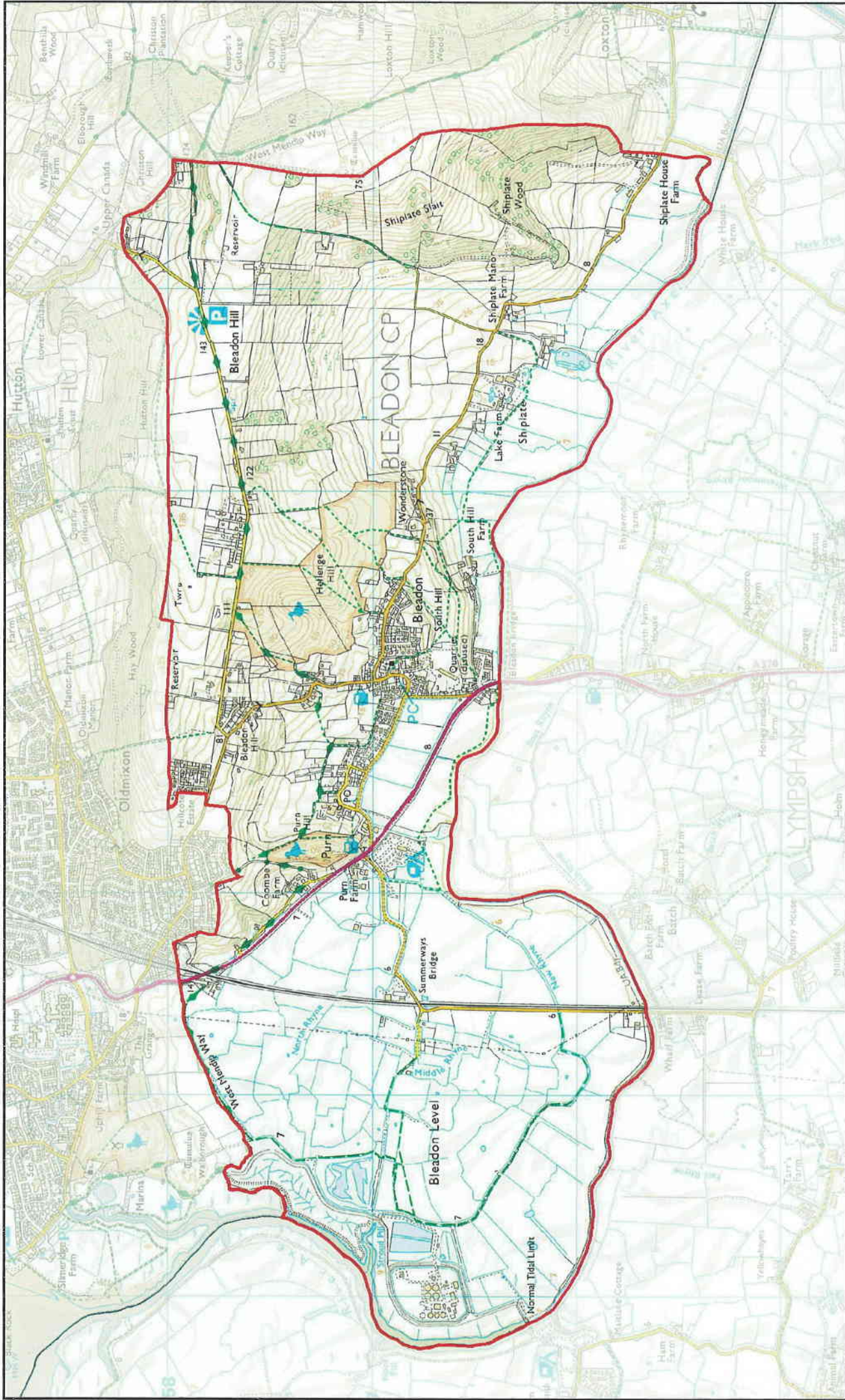
The winter edition, which we are planning to publish at the beginning of December so that we can include details of all your Christmas events, celebrations and news can be publicised. The final date for submission of articles and adverts is Friday 11th November 2016, and we'll have our army of distributors at the ready from Friday 25th November. As usual, all submissions are included or edited at the editor's discretion.

In the next edition we'd like to celebrate our village's creativity. We know of residents who make cheese, beer, fairy doors and greetings cards, but we're sure that there are many more 'makers' that we don't know about. If you make something, or know someone who does we'd love to hear from you.

Email gutsells@btinternet.com

Your Bleadon Parish Councillors

Claire Gutsell	School House, Old School Lane, Bleadon	811980
ID Clarke	The Granary, Milberry Lane, Bleadon	815182
Mary Sheppard	The Incas, Bleadon Road, Bleadon	812921
Morag Edwards	Jamaica House, Bridge Road, Bleadon	811799
David Chinn	Four Winds, Hillside Road, Bleadon	221736
Peter Gibbon	66 Brockley Crescent, Bleadon Hill	814283
Steve Hartree	Chestnuts, Chestnut Lane, Bleadon	811849

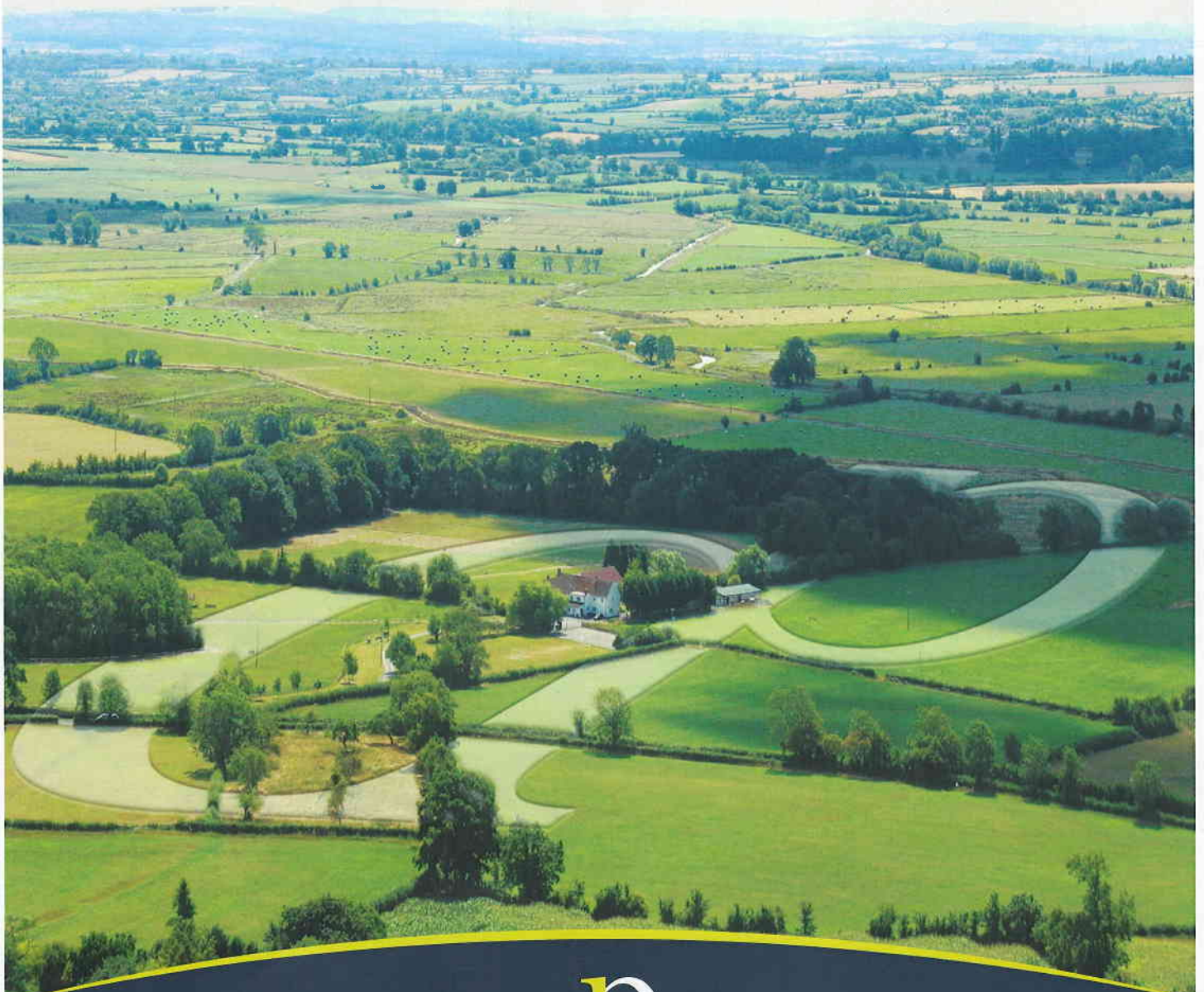


Scale: 1:25000
 Drawn by: Administrator
 Date: 20 September 2016
 Time: 14:27:54



©Crown copyright and database rights 2016 Ordnance Survey 100023397. You are not permitted to copy, sub-license, distribute or sell any of this data to third parties in any form. © Aerial Photography 2009 Imagery copyright Getmapping PLC. www.getmapping.com. © and database right "Crown Copyright and Landmark Information Group Ltd" (All rights reserved) (2016).

...all over Somerset



DAVID PLAISTER

different perspective

For more information call 01934 815053
or visit www.davidplaister.co.uk

PROPERTY AGENTS | SALES & LETTINGS | AUCTIONEERS

Bleadon Parish Council Communication Survey

How to complete the survey:

- Please read each question and then tick or complete each answer
- Once the form has been completed you can place it in the survey box at either the Post Office, or the Queens Arms or give it to any Parish Councillor
- Please hand the form in by 31 October at the latest
- You don't have to put your name and address on the completed survey, but please do so if you would like to be entered into the prize draw or to be involved in village activities
- The winner of the £20 voucher will be drawn at random from responses containing a name and address.
- Names and addresses supplied will not be used for any purpose other than the prize draw or to get in touch with those wishing to get involved in village activities.

Where do you obtain information about village events and issues (choose your two main sources of information)?:

- Village noticeboards
- Word of mouth
- Bleadon BOB
- Bleadon News magazine
- Parish Council website
- Social media
- Local newspapers (such as the Weston Mercury)

Which of the following statements best reflects your opinion?:

- I know where to obtain news and information about our village
- I'm not sure how to find news and information about our village
- I'm confused by the different news sources available
- I'm not interested in news and information about our village

Earlier this year we changed the name of your magazine from Bleadon Village News to Bleadon News, to reflect the fact that it covers the whole parish. Are you:

- Comfortable with the magazine's new name
- Preferred it as it was
- Concerned that people may confuse it with other news sources
- Not bothered either way

We aim to produce Bleadon News on a quarterly basis as an A4 (a standard sheet of paper) sized magazine and deliver it to every house in the village. Please can you tell us which format you would prefer in future:

- Keep it as it is
- Change it to an A5 (half a standard sheet of paper) size
- Change it to an electronic/online format
- Stop producing a magazine altogether

If you had a concern about an aspect of life in our village, how would you report that?

- I wouldn't know how to report a concern
- I would speak to a Parish Councillor
- I would contact Bleadon Bob
- I would write to/email the Parish Clerk
- I would talk to a friend or neighbour

What would you like to see in Bleadon News? Please rank these in order of preference:

- News from clubs and societies
- Profiles of fellow parishioners
- News about Parish Council activities
- Photographs of village events
- Information about issues affecting Bleadon (e.g. housing developments/crime statistics)
- Information about local businesses
- Information about what the Parish Council does
- Information about North Somerset Council
- Features about things to do around our village (e.g. walks or historical trails)

Do you have any other comments or suggestions about how we develop your magazine in future?

Would you find it useful to be able to find out about Parish Council news and issues via social media (e.g. Twitter or Facebook)?

- Yes
- No
- Not sure

Do you have any issues or concerns that you would like to see the Parish Council address over the coming months?

Your new council is focused on taking positive action to make our village an outstanding place to live. Would you be interested in helping out in any of the following ways, as and when initiatives are started?:

- Volunteering for physical work (e.g. path clearing, planting tubs, village clean-ups)
- Helping to deliver Bleadon News in your area
- Carrying out online or other research
- Helping to organise events
- Offering a particular skill (please specify)
- Standing to be co-opted as a Parish Councillor. (We have two vacancies).

Would you be prepared to complete another survey in the future?

- Yes
- No
- Not sure

Name:

Contact number: